

Data Path : Z:\pestpcbsrv\HPCHEM1\ECD_D\Data\PD073118\
 Data File : PD048653.D
 Signal(s) : Signal #1: ECD1A.CH Signal #2: ECD2B.CH
 Acq On : 31 Jul 2018 19:10
 Operator : AJ\SJ
 Sample : PTOXICC050
 Misc :
 ALS Vial : 19 Sample Multiplier: 1

Instrument :
 ECD_D
 ClientSampleId :
 PTOXICC050

Integration File signal 1: autoint1.e
 Integration File signal 2: autoint2.e
 Quant Time: Aug 01 05:02:44 2018
 Quant Method : Z:\pestpcbsrv\HPCHEM1\ECD_D\Method\DTX073118.M
 Quant Title : GC Extractables
 QLast Update : Wed Aug 01 05:02:54 2018
 Response via : Initial Calibration
 Integrator: ChemStation 6890 Scale Mode: Large solvent peaks clipped

Volume Inj. : 1 µl
 Signal #1 Phase : ZB-MR2 Signal #2 Phase: ZB-MR1
 Signal #1 Info : 30M x 0.32mm x0.2 Signal #2 Info : 30M x 0.32mm x 0.50µm

Compound	RT#1	RT#2	Resp#1	Resp#2	ng/ml	ng/ml

System Monitoring Compounds						
1) SA Tetrachlo...	3.371	3.968	6026719	75747248	5.220	5.349
7) SA Decachlor...	8.068	8.994	7649701	98854871	5.336	6.033
Target Compounds						
2) Toxaphene-1	0.000	6.328	0	5115769	N.D.	52.004 #
3) Toxaphene-2	6.153	7.029	558037	10099953	25.258	74.944 #
4) Toxaphene-3	6.432f	7.103	1238184	7400976	86.300	20.477 #
5) Toxaphene-4	6.791	7.193	2431258	12022394	49.682	27.326 #
6) Toxaphene-5	6.922	7.592	3396811	24473165	41.998	52.568 #

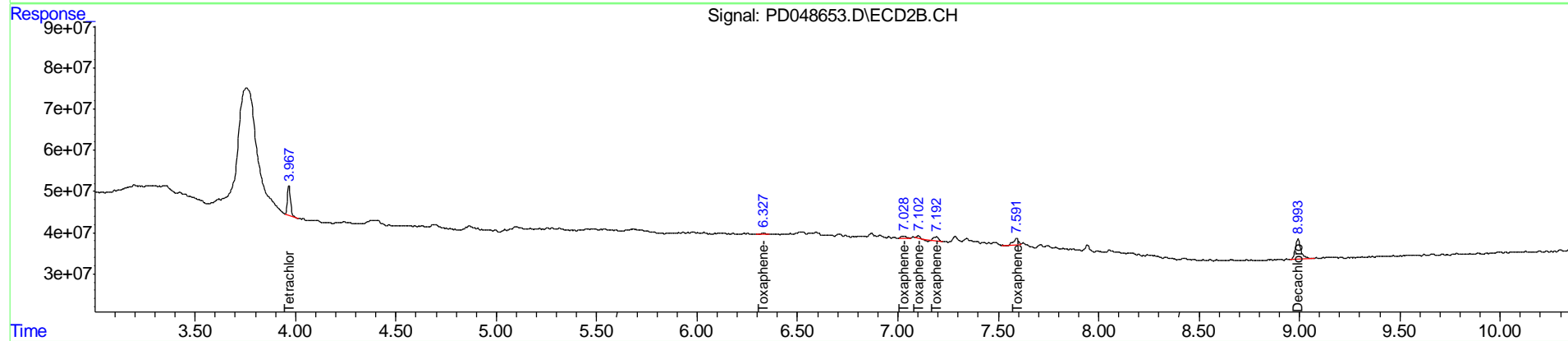
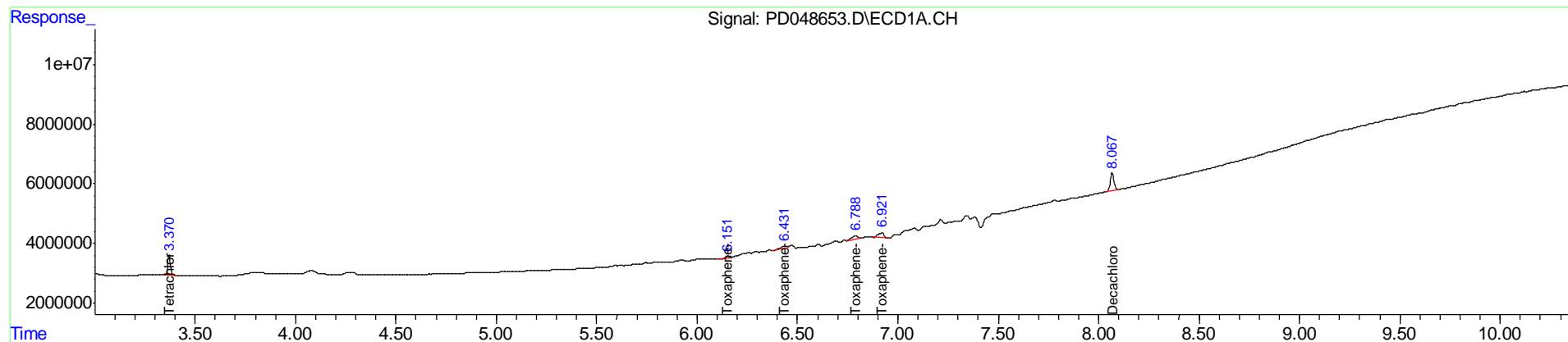
(f)=RT Delta > 1/2 Window (#)=Amounts differ by > 25% (m)=manual int.

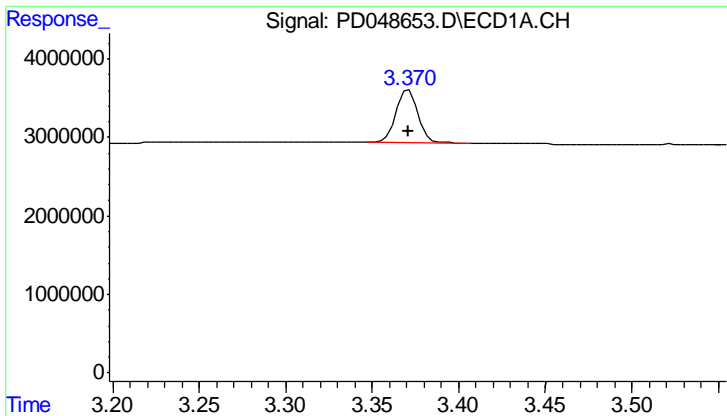
Data Path : Z:\pestpcbsrv\HPCHEM1\ECD_D\Data\PD073118\
 Data File : PD048653.D
 Signal(s) : Signal #1: ECD1A.CH Signal #2: ECD2B.CH
 Acq On : 31 Jul 2018 19:10
 Operator : AJ\SJ
 Sample : PTOXICC050
 Misc :
 ALS Vial : 19 Sample Multiplier: 1

Instrument :
 ECD_D
 Client Sampled :
 PTOXICC050

Integration File signal 1: autoint1.e
 Integration File signal 2: autoint2.e
 Quant Time: Aug 01 05:02:44 2018
 Quant Method : Z:\pestpcbsrv\HPCHEM1\ECD_D\Method\DTX073118.M
 Quant Title : GC Extractables
 QLast Update : Wed Aug 01 05:02:54 2018
 Response via : Initial Calibration
 Integrator: ChemStation 6890 Scale Mode: Large solvent peaks clipped

Volume Inj. : 1 µl
 Signal #1 Phase : ZB-MR2 Signal #2 Phase: ZB-MR1
 Signal #1 Info : 30M x 0.32mm x0.2 Signal #2 Info : 30M x 0.32mm x 0.50µm

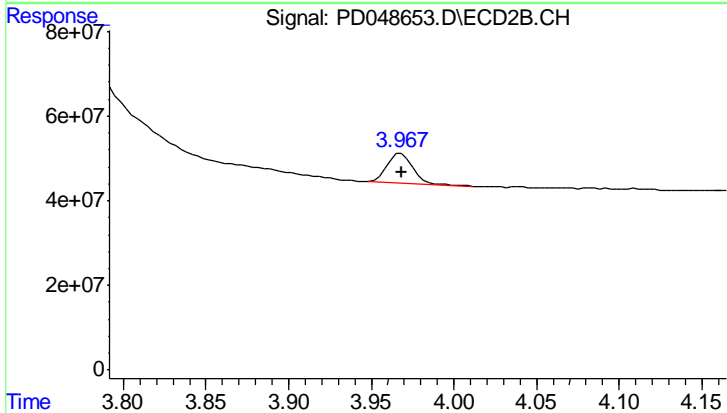




#1 Tetrachloro-m-xylene

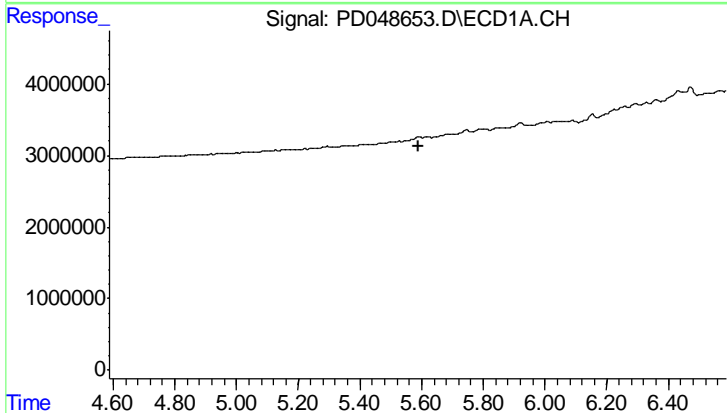
R.T.: 3.371 min
 Delta R.T.: 0.000 min
 Response: 6026719
 Conc: 5.22 ng/ml

Instrument :
 ECD_D
 ClientSampleId :
 PTOXIC050



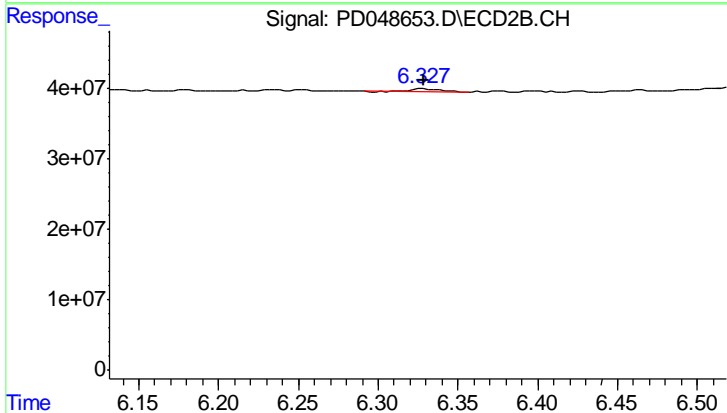
#1 Tetrachloro-m-xylene

R.T.: 3.968 min
 Delta R.T.: 0.000 min
 Response: 75747248
 Conc: 5.35 ng/ml



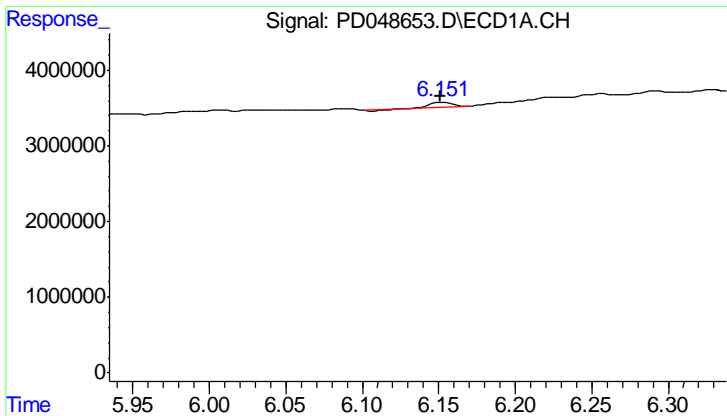
#2 Toxaphene-1

R.T.: 0.000 min
 Exp R.T. : 5.588 min
 Response: 0
 Conc: N.D.



#2 Toxaphene-1

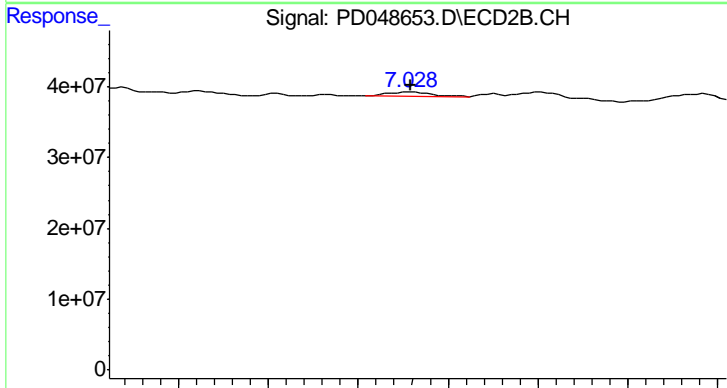
R.T.: 6.328 min
 Delta R.T.: 0.000 min
 Response: 5115769
 Conc: 52.00 ng/ml



#3 Toxaphene-2

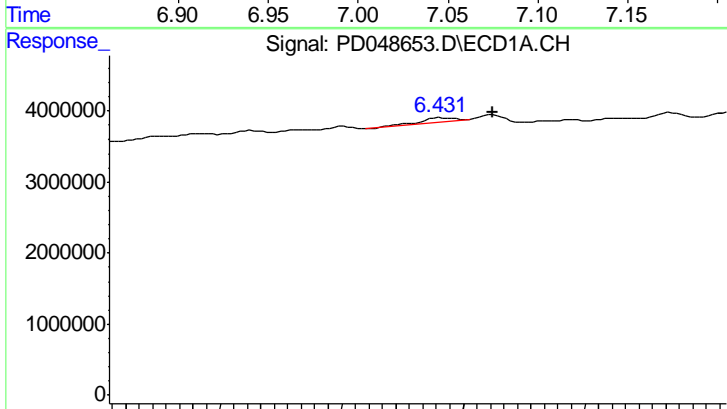
R.T.: 6.153 min
 Delta R.T.: 0.002 min
 Response: 558037
 Conc: 25.26 ng/ml

Instrument :
 ECD_D
 ClientSampleId :
 PTOXICC050



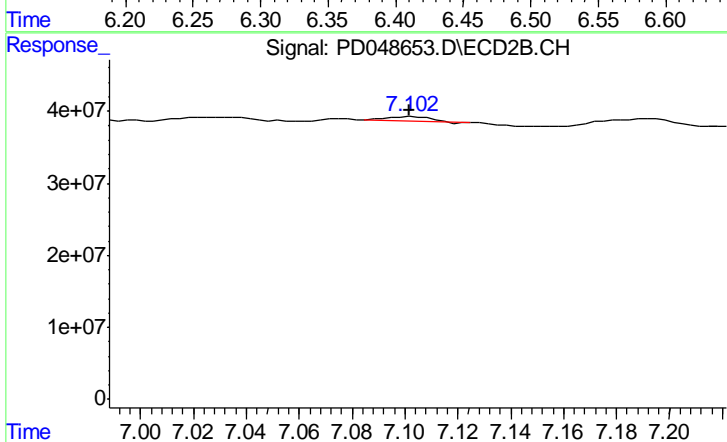
#3 Toxaphene-2

R.T.: 7.029 min
 Delta R.T.: 0.000 min
 Response: 10099953
 Conc: 74.94 ng/ml



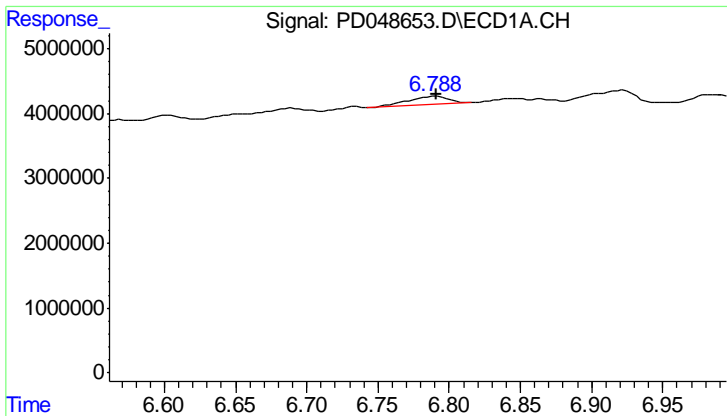
#4 Toxaphene-3

R.T.: 6.432 min
 Delta R.T.: -0.039 min
 Response: 1238184
 Conc: 86.30 ng/ml



#4 Toxaphene-3

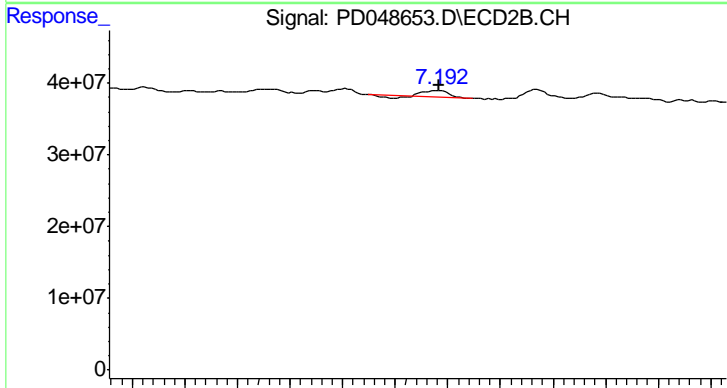
R.T.: 7.103 min
 Delta R.T.: 0.001 min
 Response: 7400976
 Conc: 20.48 ng/ml



#5 Toxaphene-4

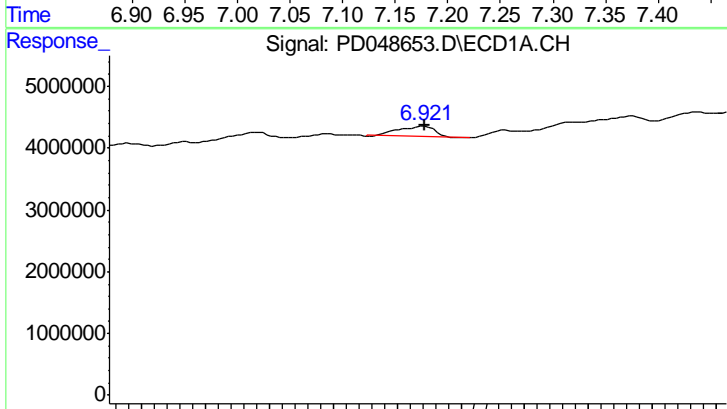
R.T.: 6.791 min
 Delta R.T.: 0.000 min
 Response: 2431258
 Conc: 49.68 ng/ml

Instrument :
 ECD_D
 ClientSampleId :
 PTOXICC050



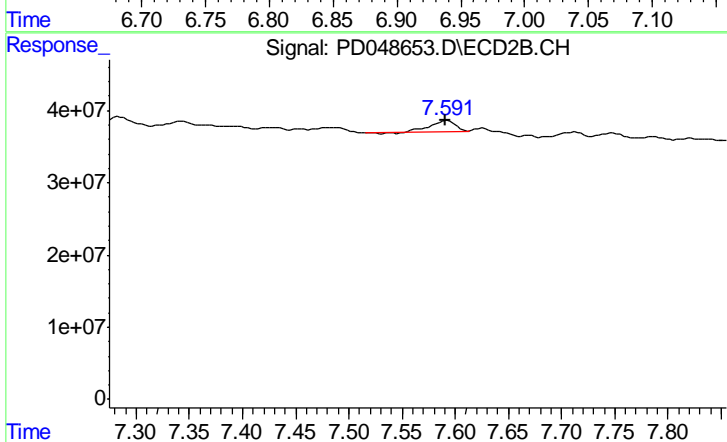
#5 Toxaphene-4

R.T.: 7.193 min
 Delta R.T.: 0.001 min
 Response: 12022394
 Conc: 27.33 ng/ml



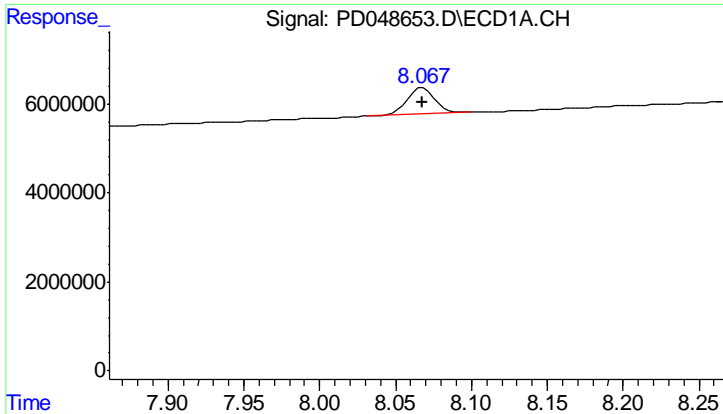
#6 Toxaphene-5

R.T.: 6.922 min
 Delta R.T.: 0.000 min
 Response: 3396811
 Conc: 42.00 ng/ml



#6 Toxaphene-5

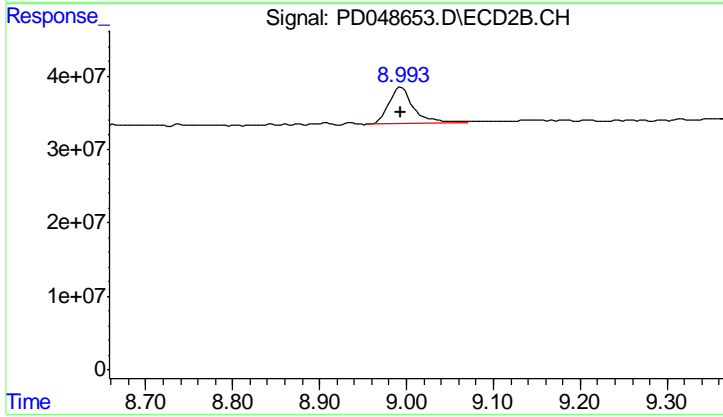
R.T.: 7.592 min
 Delta R.T.: 0.000 min
 Response: 24473165
 Conc: 52.57 ng/ml



#7 Decachlorobiphenyl

R.T.: 8.068 min
Delta R.T.: 0.000 min
Response: 7649701
Conc: 5.34 ng/ml

Instrument :
ECD_D
ClientSampleId :
PTOXICC050



#7 Decachlorobiphenyl

R.T.: 8.994 min
Delta R.T.: 0.001 min
Response: 98854871
Conc: 6.03 ng/ml