

Data Path : Z:\pestpcbsrv\HPCHEM1\ECD_D\Data\PD073120\
 Data File : PD058838.D
 Signal(s) : Signal #1: ECD1A.ch Signal #2: ECD2B.ch
 Acq On : 30 Jul 2020 16:16
 Operator : AJ\MA
 Sample : INDB313
 Misc :
 ALS Vial : 21 Sample Multiplier: 1

Instrument :
 ECD_D
 ClientSampleId :
 INDB313

Integration File signal 1: autoint1.e
 Integration File signal 2: autoint2.e
 Quant Time: Jul 31 01:59:29 2020
 Quant Method : Z:\pestpcbsrv\HPCHEM1\ECD_D\Method\PD073120CLP.M
 Quant Title : GC Extractables
 QLast Update : Thu Jul 30 03:06:29 2020
 Response via : Initial Calibration
 Integrator: ChemStation

Volume Inj. : 1 µl
 Signal #1 Phase : ZB-MR2 Signal #2 Phase: ZB-MR1
 Signal #1 Info : 30M x 0.32mm x0.2 Signal #2 Info : 30M x 0.32mm x 0.50µm

Compound	RT#1	RT#2	Resp#1	Resp#2	ng/ml	ng/ml

System Monitoring Compounds						
1) SA Tetrachlo...	3.209	3.866	30773197	45097772	19.724	20.173
27) SA Decachlor...	7.845	8.862	55598451	70108189	34.616	34.043
Target Compounds						
4) MA Heptachlor	4.151f	0.000	17962216	0	9.249	N.D. #
5) MB Aldrin	4.416	5.329	38366074	53236422	18.554	18.859
6) B beta-BHC	4.151	4.701	17962216	25869624	18.813	19.212
7) B delta-BHC	4.342	4.913	42552042	50771769	18.565	20.955
8) B Heptachlo...	4.849	5.713	34149880	47585577	18.612	18.576
9) A Endosulfan I	5.125f	6.018f	34612059	48042398	20.085	20.361
10) B trans-Chl...	5.068	5.945	34768309	48091904	18.429	18.620
11) B cis-Chlor...	5.125	6.018	34612059	48042398	18.406	18.615
12) B 4,4'-DDE	5.294	6.178	69296244	93057789	37.081	37.281
14) MA Endrin	0.000	6.576f	0	8894285	N.D.	4.733
15) B Endosulfa...	5.937	6.747	59978013	79919725	36.095	36.104
16) A 4,4'-DDD	5.753f	0.000	6067710	0	3.926	N.D. #
18) B Endrin al...	6.106	6.871	49704655	67328250	36.178	35.929
19) B Endosulfa...	6.315	7.093	59394186	79477836	36.140	36.045
21) B Endrin ke...	6.795	7.559	64301806	78000353	35.473	35.246
22) Toxaphene-1	0.000	6.178	0	93057789	N.D.	7246.880
23) Toxaphene-2	0.000	6.576	0	8894285	N.D.	549.849
24) Toxaphene-3	0.000	6.871	0	67328250	N.D.	3471.473
25) Toxaphene-4	5.937	0.000	59978013	0	2027.887	N.D. #

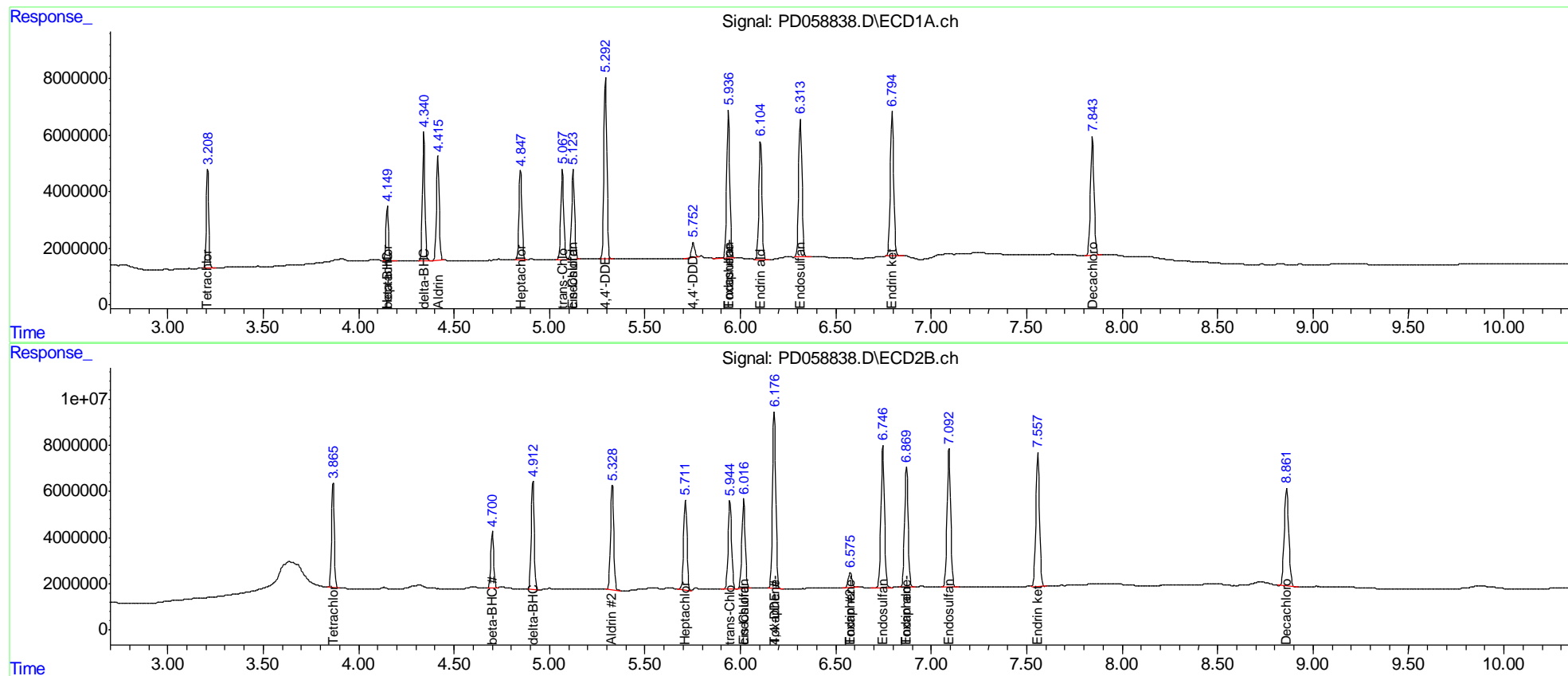
(f)=RT Delta > 1/2 Window (#)=Amounts differ by > 25% (m)=manual int.

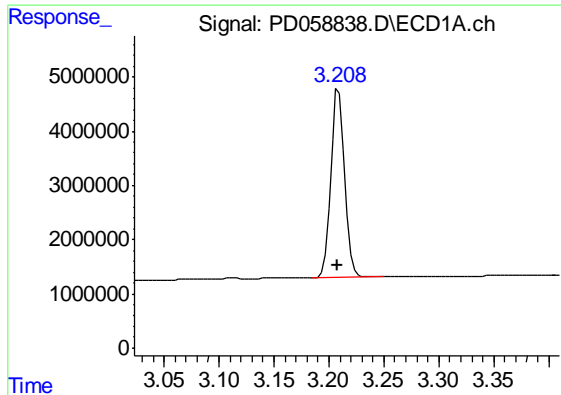
Data Path : Z:\pestpcbsrv\HPCHEM1\ECD_D\Data\PD073120\
 Data File : PD058838.D
 Signal(s) : Signal #1: ECD1A.ch Signal #2: ECD2B.ch
 Acq On : 30 Jul 2020 16:16
 Operator : AJ\MA
 Sample : INDB313
 Misc :
 ALS Vial : 21 Sample Multiplier: 1

Instrument :
 ECD_D
 ClientSampleId :
 INDB313

Integration File signal 1: autoint1.e
 Integration File signal 2: autoint2.e
 Quant Time: Jul 31 01:59:29 2020
 Quant Method : Z:\pestpcbsrv\HPCHEM1\ECD_D\Method\PD073120CLP.M
 Quant Title : GC Extractables
 QLast Update : Thu Jul 30 03:06:29 2020
 Response via : Initial Calibration
 Integrator: ChemStation

Volume Inj. : 1 µl
 Signal #1 Phase : ZB-MR2 Signal #2 Phase: ZB-MR1
 Signal #1 Info : 30M x 0.32mm x0.2 Signal #2 Info : 30M x 0.32mm x 0.50µm

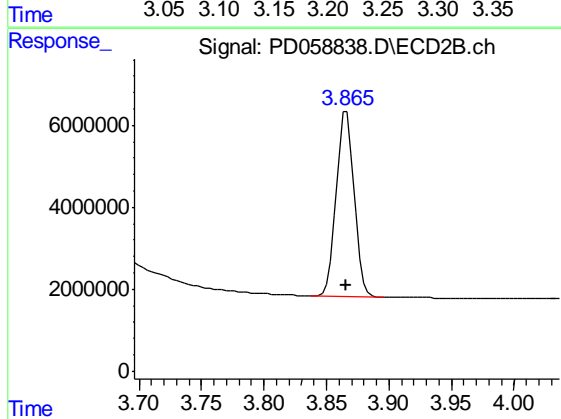




#1 Tetrachloro-m-xylene

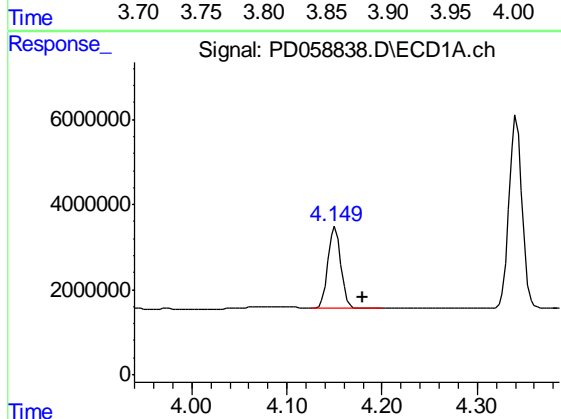
R.T.: 3.209 min
 Delta R.T.: 0.001 min
 Response: 30773197
 Conc: 19.72 ng/ml

Instrument :
 ECD_D
 ClientSampleId :
 INDB313



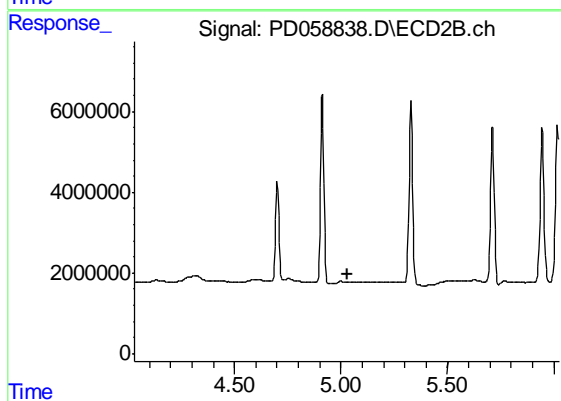
#1 Tetrachloro-m-xylene

R.T.: 3.866 min
 Delta R.T.: 0.000 min
 Response: 45097772
 Conc: 20.17 ng/ml



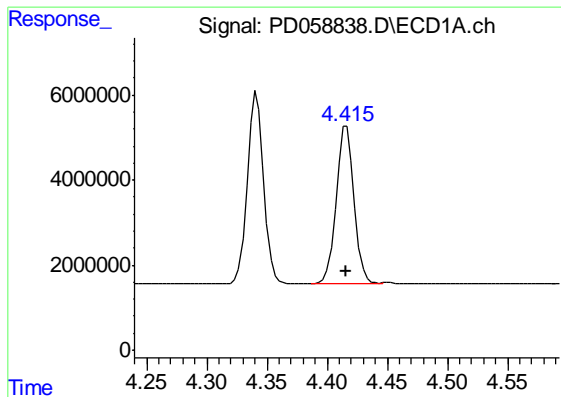
#4 Heptachlor

R.T.: 4.151 min
 Delta R.T.: -0.030 min
 Response: 17962216
 Conc: 9.25 ng/ml



#4 Heptachlor

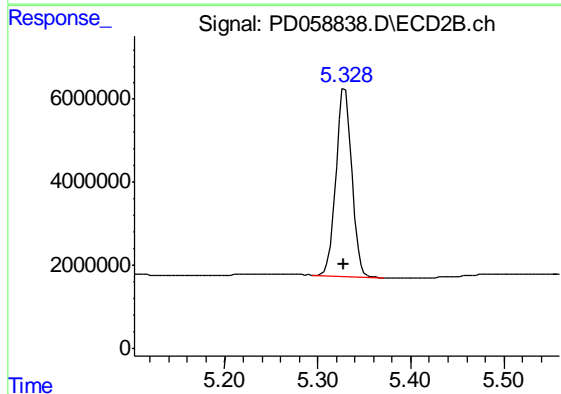
R.T.: 0.000 min
 Exp R.T. : 5.029 min
 Response: 0
 Conc: N.D.



#5 Aldrin

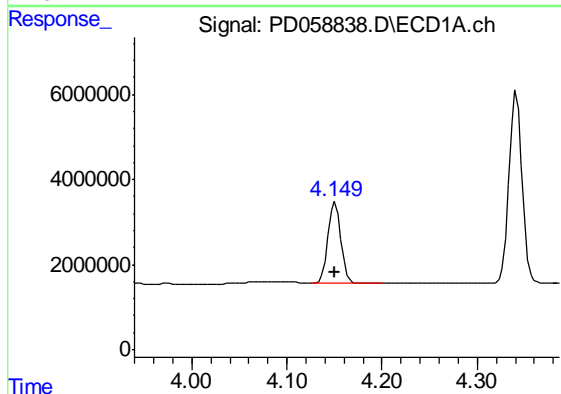
R.T.: 4.416 min
 Delta R.T.: 0.000 min
 Response: 38366074
 Conc: 18.55 ng/ml

Instrument :
 ECD_D
 ClientSampleId :
 INDB313



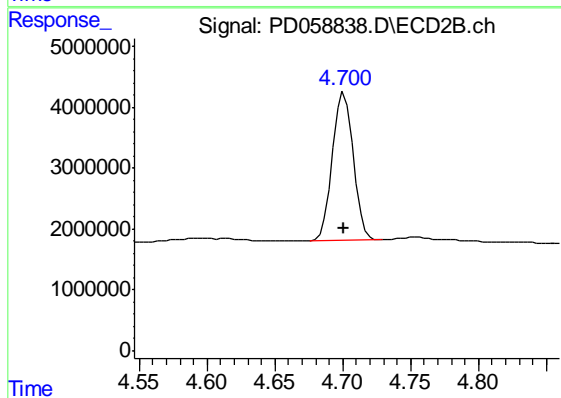
#5 Aldrin

R.T.: 5.329 min
 Delta R.T.: 0.000 min
 Response: 53236422
 Conc: 18.86 ng/ml



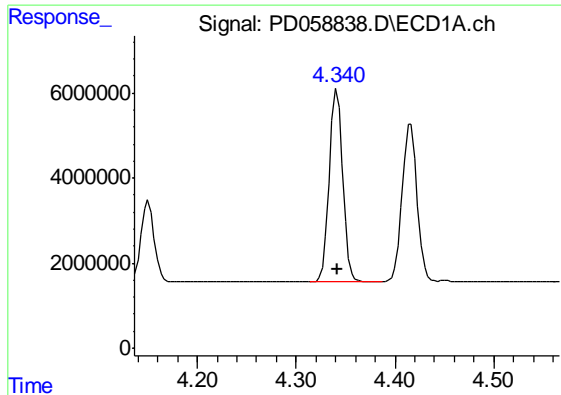
#6 beta-BHC

R.T.: 4.151 min
 Delta R.T.: 0.000 min
 Response: 17962216
 Conc: 18.81 ng/ml



#6 beta-BHC

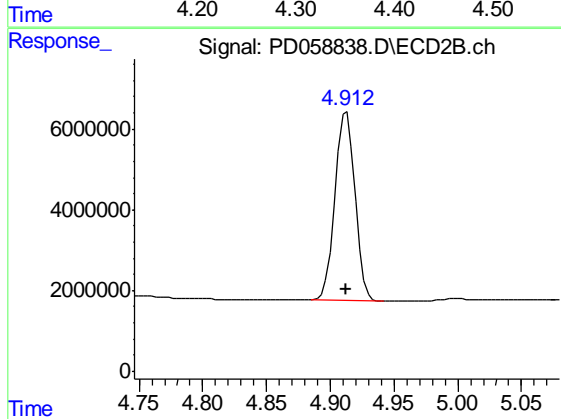
R.T.: 4.701 min
 Delta R.T.: 0.000 min
 Response: 25869624
 Conc: 19.21 ng/ml



#7 delta-BHC

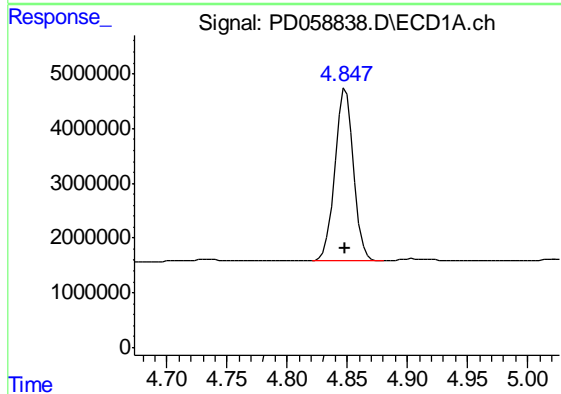
R.T.: 4.342 min
Delta R.T.: 0.000 min
Response: 42552042
Conc: 18.57 ng/ml

Instrument :
ECD_D
ClientSampleId :
INDB313



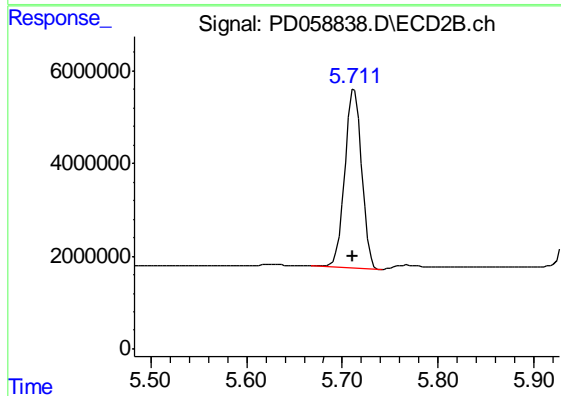
#7 delta-BHC

R.T.: 4.913 min
Delta R.T.: 0.000 min
Response: 50771769
Conc: 20.96 ng/ml



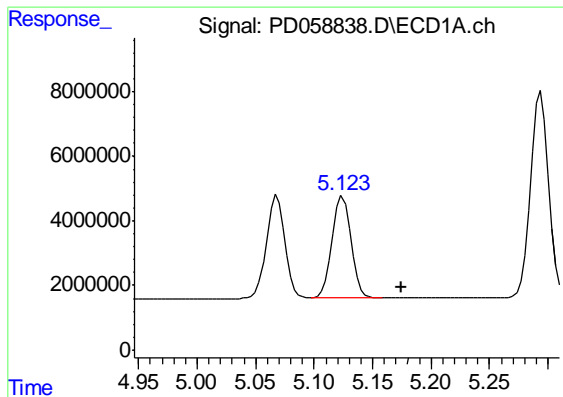
#8 Heptachlor epoxide

R.T.: 4.849 min
Delta R.T.: 0.000 min
Response: 34149880
Conc: 18.61 ng/ml



#8 Heptachlor epoxide

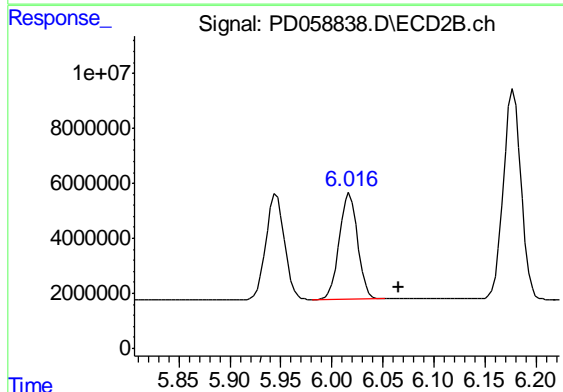
R.T.: 5.713 min
Delta R.T.: 0.002 min
Response: 47585577
Conc: 18.58 ng/ml



#9 Endosulfan I

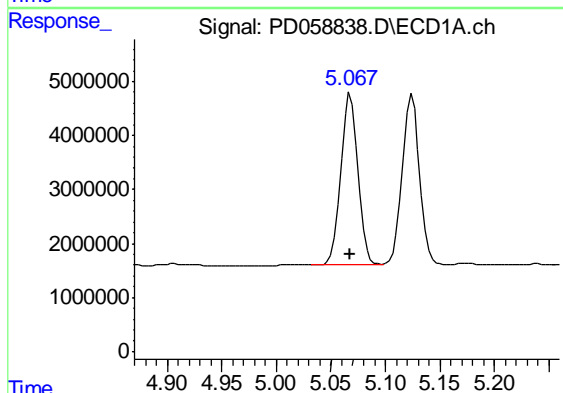
R.T.: 5.125 min
 Delta R.T.: -0.049 min
 Response: 34612059
 Conc: 20.08 ng/ml

Instrument :
 ECD_D
 ClientSampleId :
 INDB313



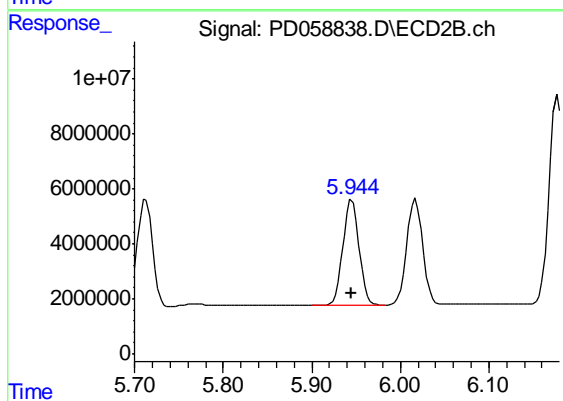
#9 Endosulfan I

R.T.: 6.018 min
 Delta R.T.: -0.047 min
 Response: 48042398
 Conc: 20.36 ng/ml



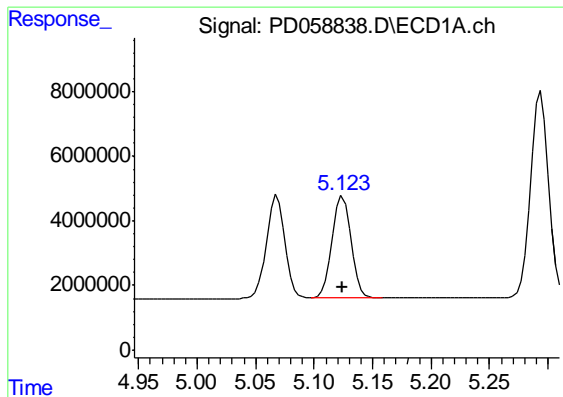
#10 trans-Chlordane

R.T.: 5.068 min
 Delta R.T.: 0.000 min
 Response: 34768309
 Conc: 18.43 ng/ml



#10 trans-Chlordane

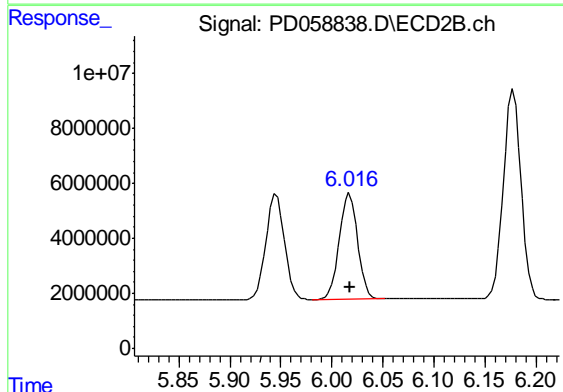
R.T.: 5.945 min
 Delta R.T.: 0.000 min
 Response: 48091904
 Conc: 18.62 ng/ml



#11 cis-Chlordane

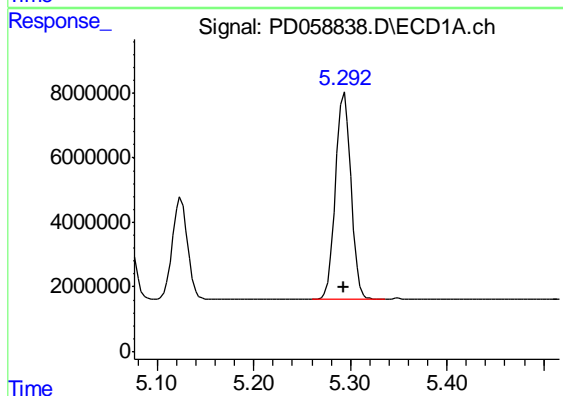
R.T.: 5.125 min
 Delta R.T.: 0.000 min
 Response: 34612059
 Conc: 18.41 ng/ml

Instrument :
 ECD_D
 ClientSampleId :
 INDB313



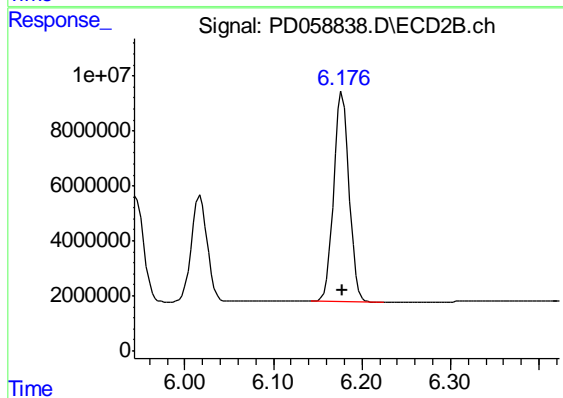
#11 cis-Chlordane

R.T.: 6.018 min
 Delta R.T.: 0.000 min
 Response: 48042398
 Conc: 18.61 ng/ml



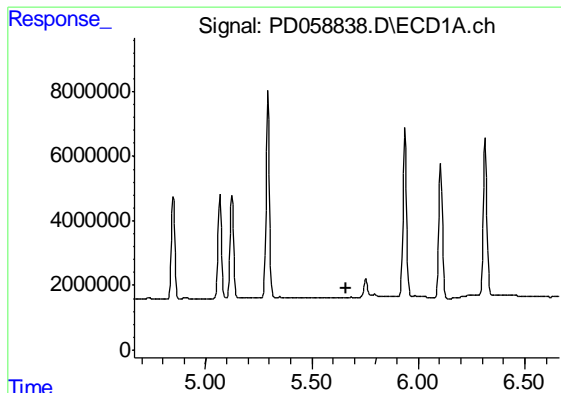
#12 4,4'-DDE

R.T.: 5.294 min
 Delta R.T.: 0.000 min
 Response: 69296244
 Conc: 37.08 ng/ml



#12 4,4'-DDE

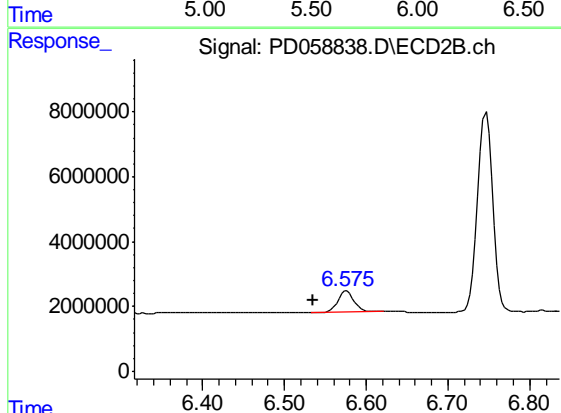
R.T.: 6.178 min
 Delta R.T.: 0.000 min
 Response: 93057789
 Conc: 37.28 ng/ml



#14 Endrin

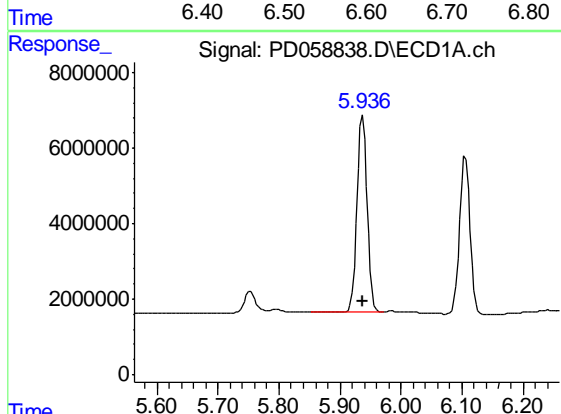
R.T.: 0.000 min
 Exp R.T. : 5.663 min
 Response: 0
 Conc: N.D.

Instrument :
 ECD_D
 ClientSampleId :
 INDB313



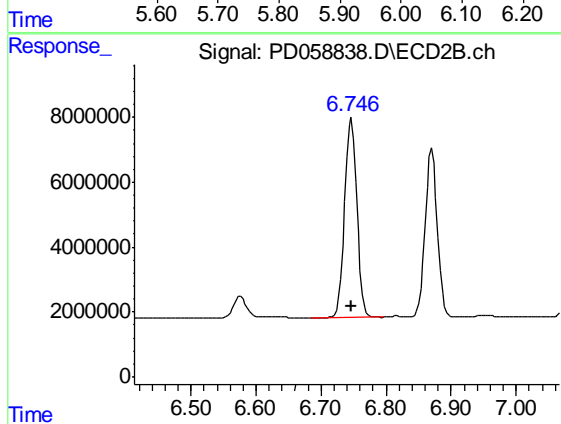
#14 Endrin

R.T.: 6.576 min
 Delta R.T.: 0.040 min
 Response: 8894285
 Conc: 4.73 ng/ml



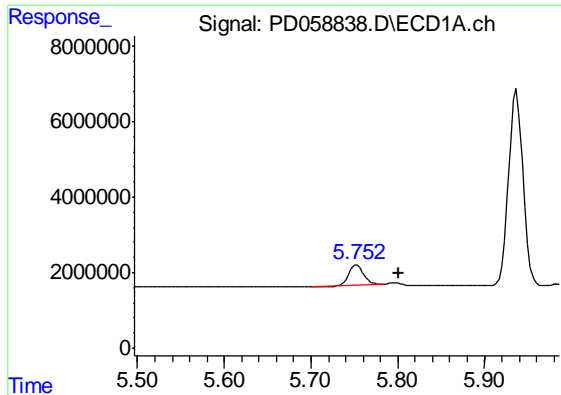
#15 Endosulfan II

R.T.: 5.937 min
 Delta R.T.: 0.000 min
 Response: 59978013
 Conc: 36.10 ng/ml



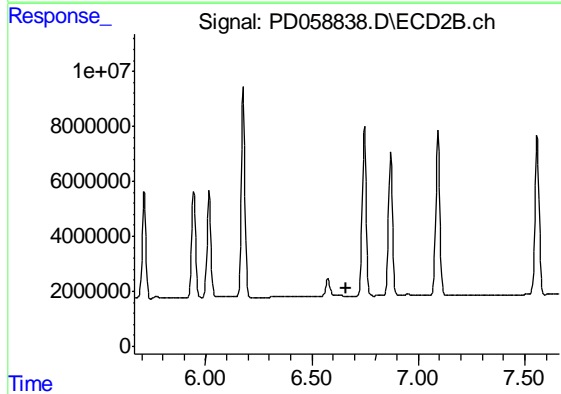
#15 Endosulfan II

R.T.: 6.747 min
 Delta R.T.: 0.000 min
 Response: 79919725
 Conc: 36.10 ng/ml

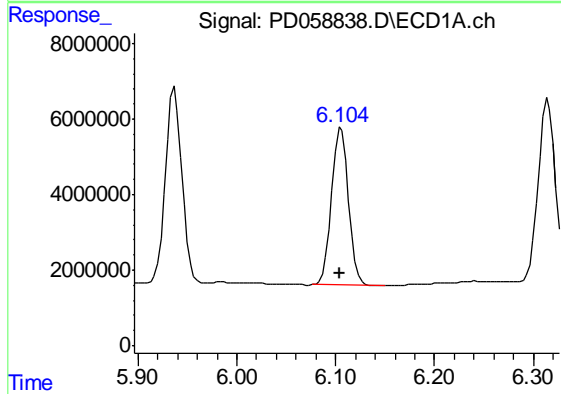


#16 4,4'-DDD
 R.T.: 5.753 min
 Delta R.T.: -0.047 min
 Response: 6067710
 Conc: 3.93 ng/ml

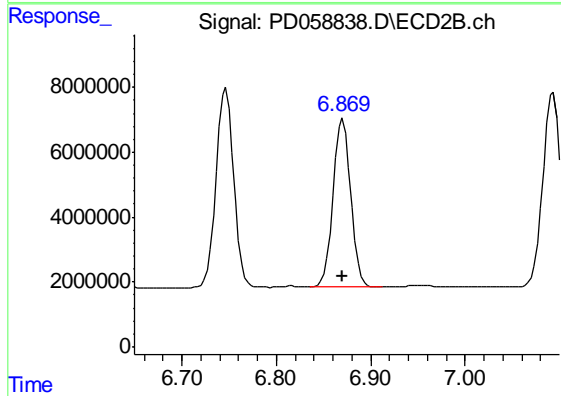
Instrument :
 ECD_D
 ClientSampleId :
 INDB313



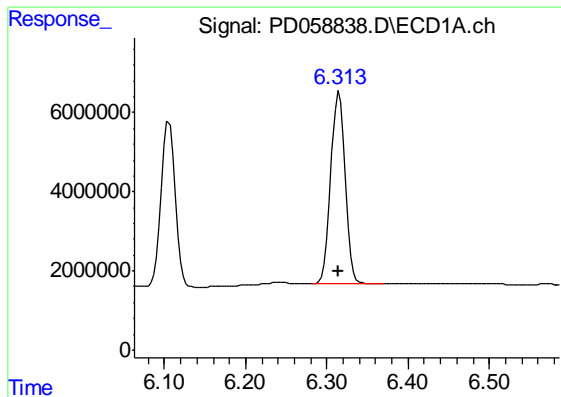
#16 4,4'-DDD
 R.T.: 0.000 min
 Exp R.T. : 6.664 min
 Response: 0
 Conc: N.D.



#18 Endrin aldehyde
 R.T.: 6.106 min
 Delta R.T.: 0.001 min
 Response: 49704655
 Conc: 36.18 ng/ml



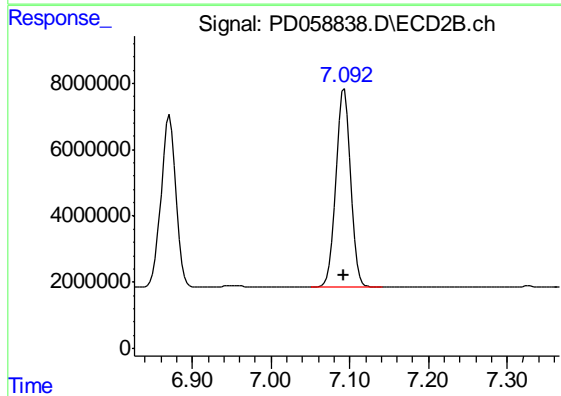
#18 Endrin aldehyde
 R.T.: 6.871 min
 Delta R.T.: 0.001 min
 Response: 67328250
 Conc: 35.93 ng/ml



#19 Endosulfan Sulfate

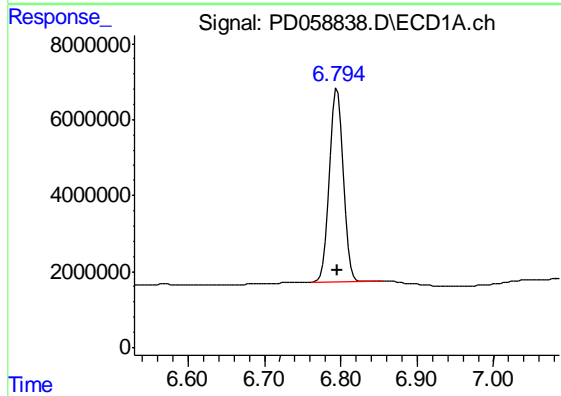
R.T.: 6.315 min
Delta R.T.: 0.000 min
Response: 59394186
Conc: 36.14 ng/ml

Instrument :
ECD_D
ClientSampleId :
INDB313



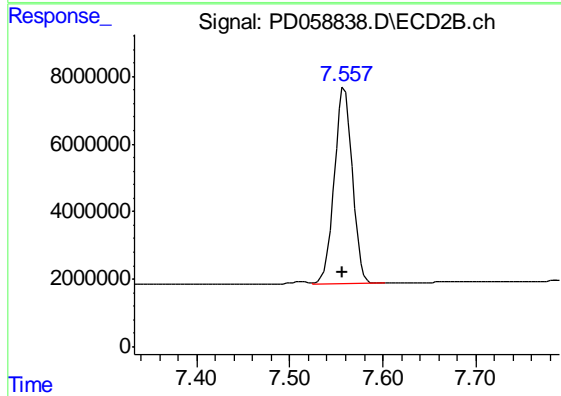
#19 Endosulfan Sulfate

R.T.: 7.093 min
Delta R.T.: 0.000 min
Response: 79477836
Conc: 36.05 ng/ml



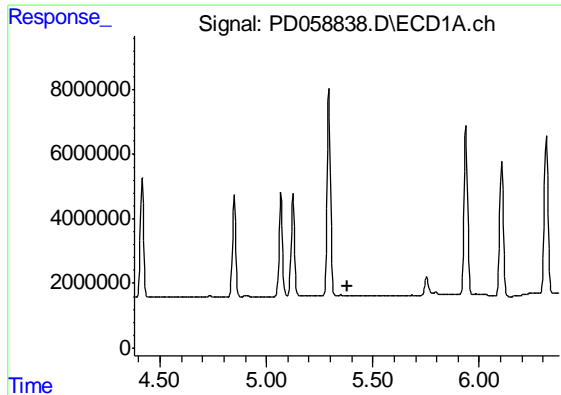
#21 Endrin ketone

R.T.: 6.795 min
Delta R.T.: 0.000 min
Response: 64301806
Conc: 35.47 ng/ml



#21 Endrin ketone

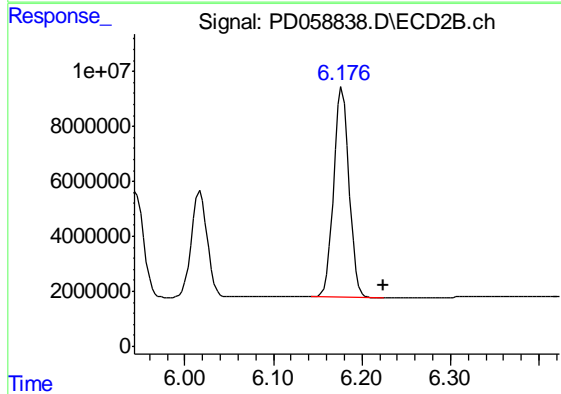
R.T.: 7.559 min
Delta R.T.: 0.002 min
Response: 78000353
Conc: 35.25 ng/ml



#22 Toxaphene-1

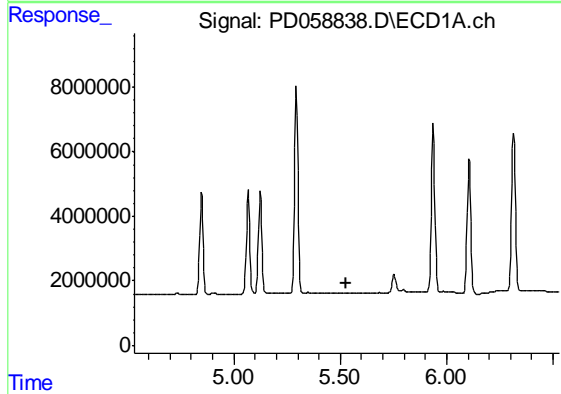
R.T.: 0.000 min
 Exp R.T. : 5.380 min
 Response: 0
 Conc: N.D.

Instrument :
 ECD_D
 ClientSampleId :
 INDB313



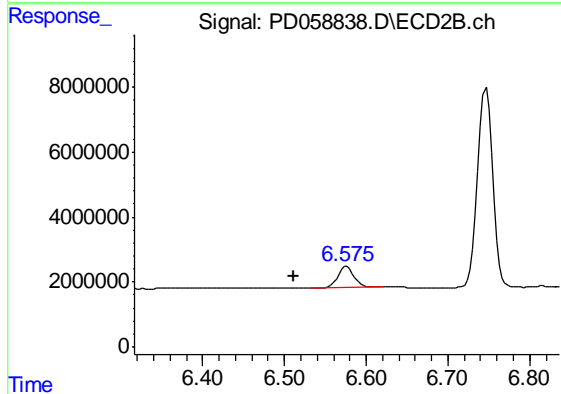
#22 Toxaphene-1

R.T.: 6.178 min
 Delta R.T.: -0.046 min
 Response: 93057789
 Conc: 7246.88 ng/ml



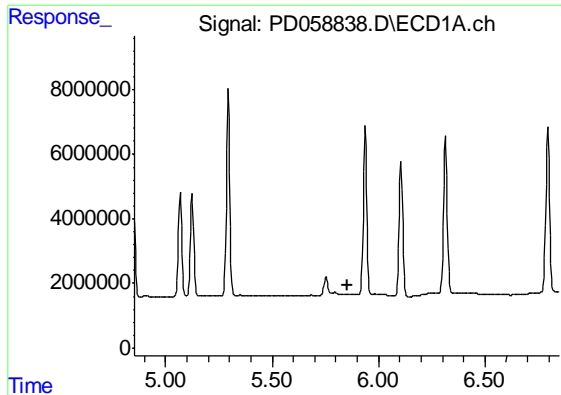
#23 Toxaphene-2

R.T.: 0.000 min
 Exp R.T. : 5.531 min
 Response: 0
 Conc: N.D.



#23 Toxaphene-2

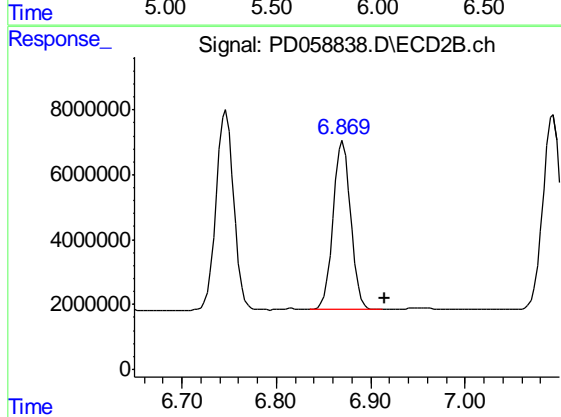
R.T.: 6.576 min
 Delta R.T.: 0.064 min
 Response: 8894285
 Conc: 549.85 ng/ml



#24 Toxaphene-3

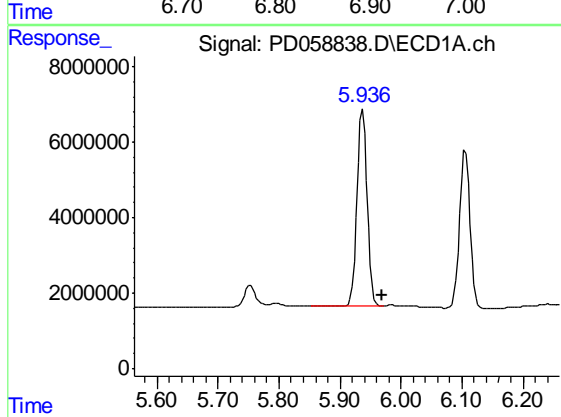
R.T.: 0.000 min
 Exp R.T. : 5.852 min
 Response: 0
 Conc: N.D.

Instrument :
 ECD_D
 ClientSampleId :
 INDB313



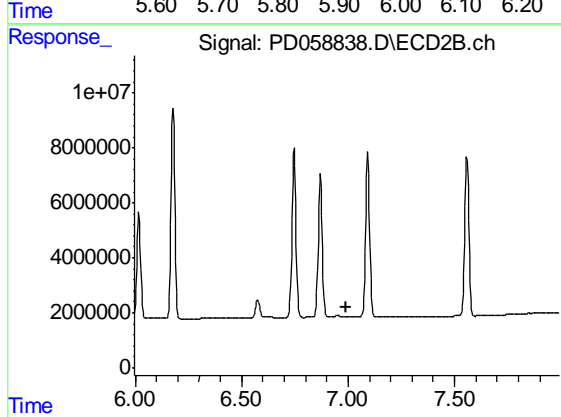
#24 Toxaphene-3

R.T.: 6.871 min
 Delta R.T.: -0.044 min
 Response: 67328250
 Conc: 3471.47 ng/ml



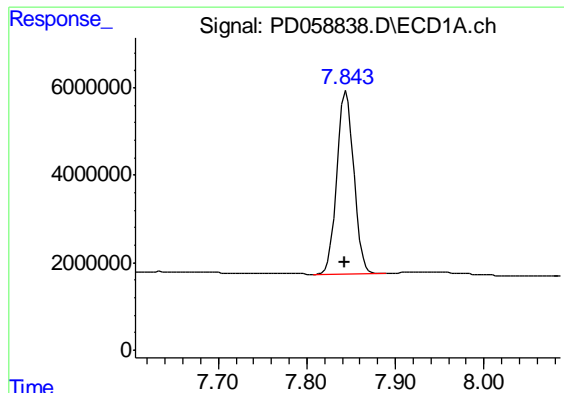
#25 Toxaphene-4

R.T.: 5.937 min
 Delta R.T.: -0.032 min
 Response: 59978013
 Conc: 2027.89 ng/ml



#25 Toxaphene-4

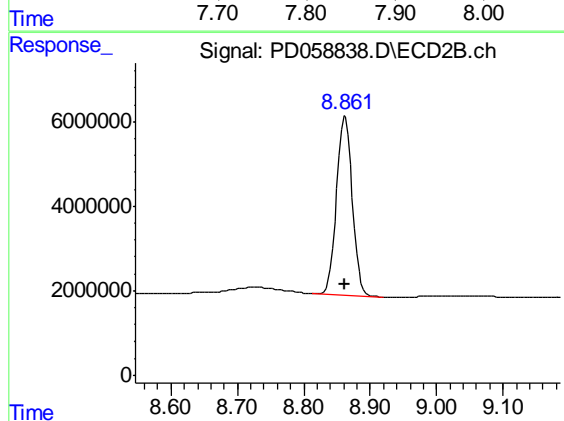
R.T.: 0.000 min
 Exp R.T. : 6.994 min
 Response: 0
 Conc: N.D.



#27 Decachlorobiphenyl

R.T.: 7.845 min
Delta R.T.: 0.001 min
Response: 55598451
Conc: 34.62 ng/ml

Instrument :
ECD_D
ClientSampleId :
INDB313



#27 Decachlorobiphenyl

R.T.: 8.862 min
Delta R.T.: 0.001 min
Response: 70108189
Conc: 34.04 ng/ml