

Data Path : Z:\pestpcbsrv\HPCHEM1\ECD_D\Data\PD080118\
 Data File : PD048669.D
 Signal(s) : Signal #1: ECD1A.CH Signal #2: ECD2B.CH
 Acq On : 01 Aug 2018 9:43
 Operator : AJ\SJ
 Sample : I.BLK
 Misc :
 ALS Vial : 2 Sample Multiplier: 1

Instrument :
 ECD_D
 ClientSampleId :
 I.BLK

Integration File signal 1: autoint1.e
 Integration File signal 2: autoint2.e
 Quant Time: Aug 01 11:55:55 2018
 Quant Method : Z:\pestpcbsrv\HPCHEM1\ECD_D\Method\DTX073118.M
 Quant Title : GC Extractables
 QLast Update : Wed Aug 01 10:17:31 2018
 Response via : Initial Calibration
 Integrator: ChemStation 6890 Scale Mode: Large solvent peaks clipped

Volume Inj. : 1 µl
 Signal #1 Phase : ZB-MR2 Signal #2 Phase: ZB-MR1
 Signal #1 Info : 30M x 0.32mm x0.2 Signal #2 Info : 30M x 0.32mm x 0.50µm

Compound	RT#1	RT#2	Resp#1	Resp#2	ng/ml	ng/ml
----------	------	------	--------	--------	-------	-------

 System Monitoring Compounds

1) SA Tetrachlo...	3.372	3.968	22588140	292.3E6	19.563	20.712
7) SA Decachlor...	8.070	8.993	30067710	346.4E6	20.974	21.112

Target Compounds

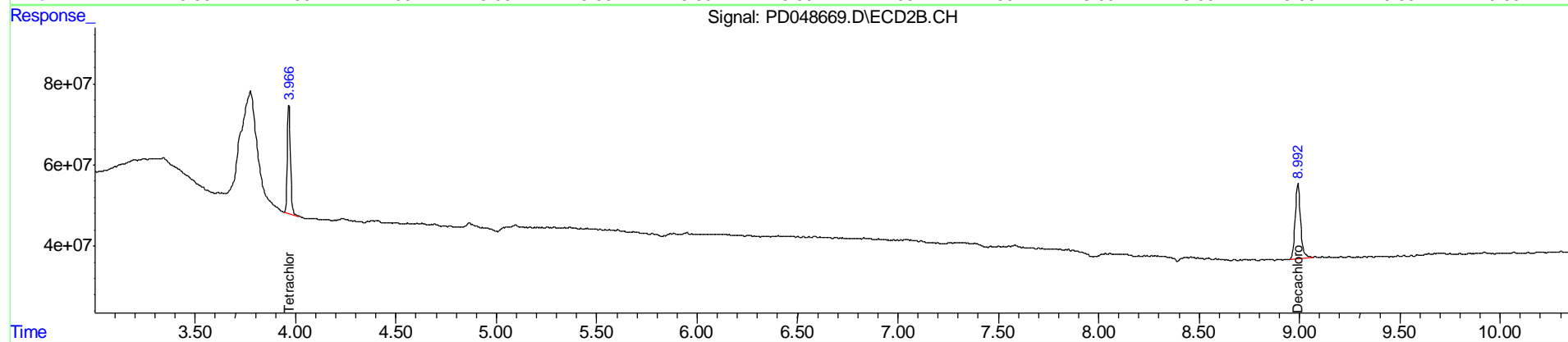
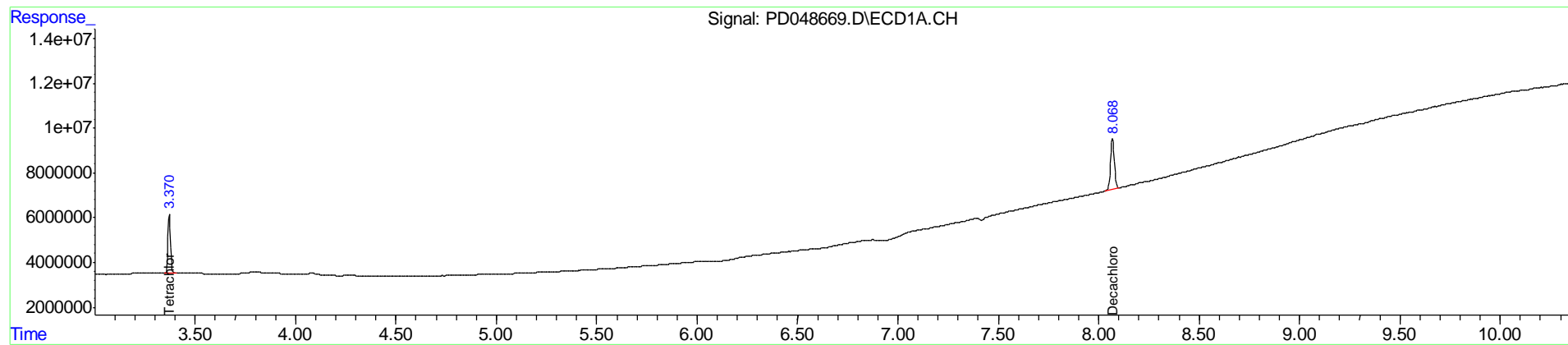
(f)=RT Delta > 1/2 Window (#)=Amounts differ by > 25% (m)=manual int.

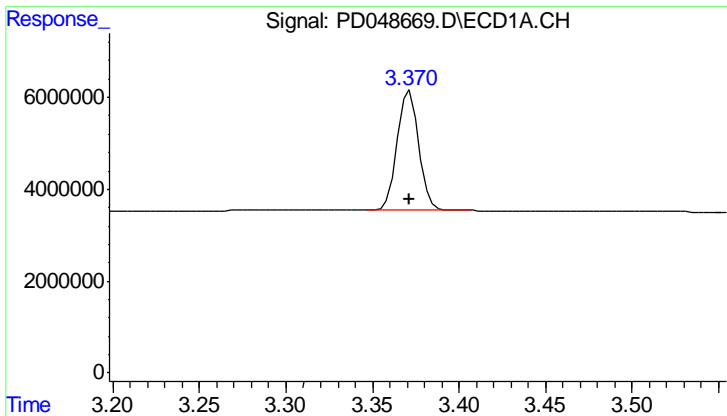
Data Path : Z:\pestpcbsrv\HPCHEM1\ECD_D\Data\PD080118\
 Data File : PD048669.D
 Signal(s) : Signal #1: ECD1A.CH Signal #2: ECD2B.CH
 Acq On : 01 Aug 2018 9:43
 Operator : AJ\SJ
 Sample : I.BLK
 Misc :
 ALS Vial : 2 Sample Multiplier: 1

Instrument :
 ECD_D
 ClientSampleId :
 I.BLK

Integration File signal 1: autoint1.e
 Integration File signal 2: autoint2.e
 Quant Time: Aug 01 11:55:55 2018
 Quant Method : Z:\pestpcbsrv\HPCHEM1\ECD_D\Method\DTX073118.M
 Quant Title : GC Extractables
 QLast Update : Wed Aug 01 10:17:31 2018
 Response via : Initial Calibration
 Integrator: ChemStation 6890 Scale Mode: Large solvent peaks clipped

Volume Inj. : 1 µl
 Signal #1 Phase : ZB-MR2 Signal #2 Phase: ZB-MR1
 Signal #1 Info : 30M x 0.32mm x 0.2 Signal #2 Info : 30M x 0.32mm x 0.50µm

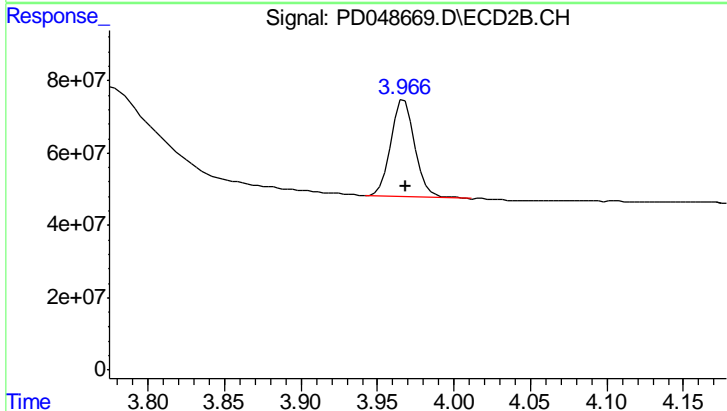




#1 Tetrachloro-m-xylene

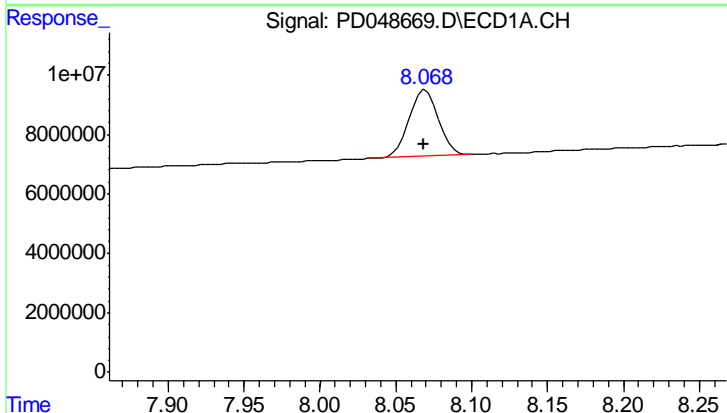
R.T.: 3.372 min
 Delta R.T.: 0.000 min
 Response: 22588140
 Conc: 19.56 ng/ml

Instrument :
 ECD_D
 ClientSampled :
 I.BLK



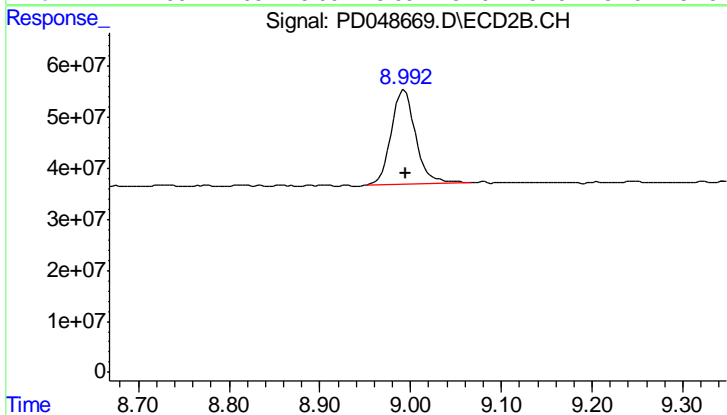
#1 Tetrachloro-m-xylene

R.T.: 3.968 min
 Delta R.T.: 0.000 min
 Response: 292346055
 Conc: 20.71 ng/ml



#7 Decachlorobiphenyl

R.T.: 8.070 min
 Delta R.T.: 0.002 min
 Response: 30067710
 Conc: 20.97 ng/ml



#7 Decachlorobiphenyl

R.T.: 8.993 min
 Delta R.T.: -0.001 min
 Response: 346425600
 Conc: 21.11 ng/ml