

Data Path : Z:\pestpcbsrv\HPCHEM1\ECD_D\Data\PD080221\
 Data File : PD064653.D
 Signal(s) : Signal #1: ECD1A.ch Signal #2: ECD2B.ch
 Acq On : 02 Aug 2021 12:10
 Operator : AR\AJ
 Sample : PB138045BS
 Misc :
 ALS Vial : 9 Sample Multiplier: 1

Instrument :
 ECD_D
ClientSampled :
 PLCS045

Manual Integrations
APPROVED
 mohammad
 8/3/2021 3:11:35 PM

Integration File signal 1: autoint1.e
 Integration File signal 2: autoint2.e
 Quant Time: Aug 03 02:47:04 2021
 Quant Method : Z:\pestpcbsrv\HPCHEM1\ECD_D\Method\PD072721CLP.M
 Quant Title : GC Extractables
 QLast Update : Wed Jul 28 07:07:14 2021
 Response via : Initial Calibration
 Integrator: ChemStation

Volume Inj. : 1 µl
 Signal #1 Phase : ZB-MR2 Signal #2 Phase: ZB-MR1
 Signal #1 Info : 30M x 0.32mm x0.2 Signal #2 Info : 30M x 0.32mm x 0.50µm

	Compound	RT#1	RT#2	Resp#1	Resp#2	ng/ml	ng/ml

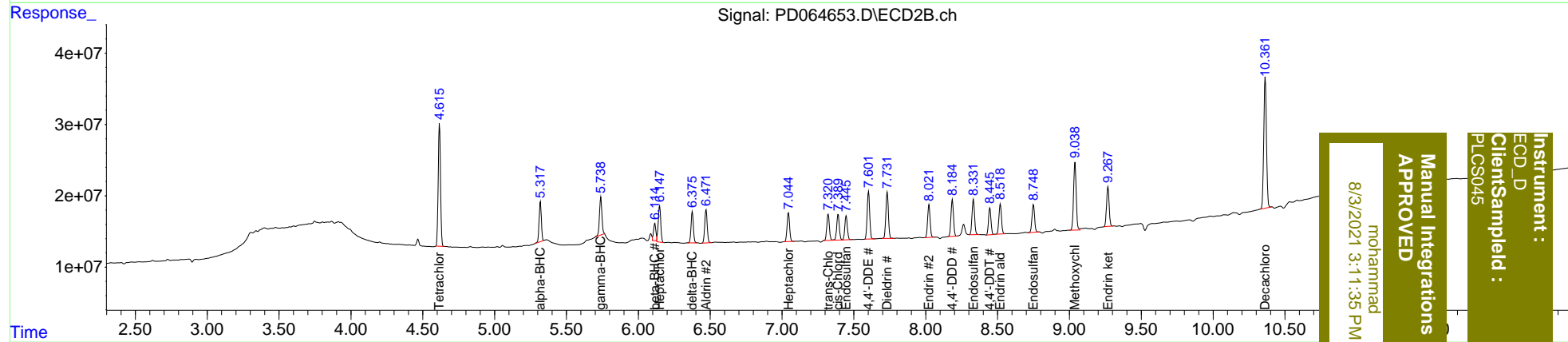
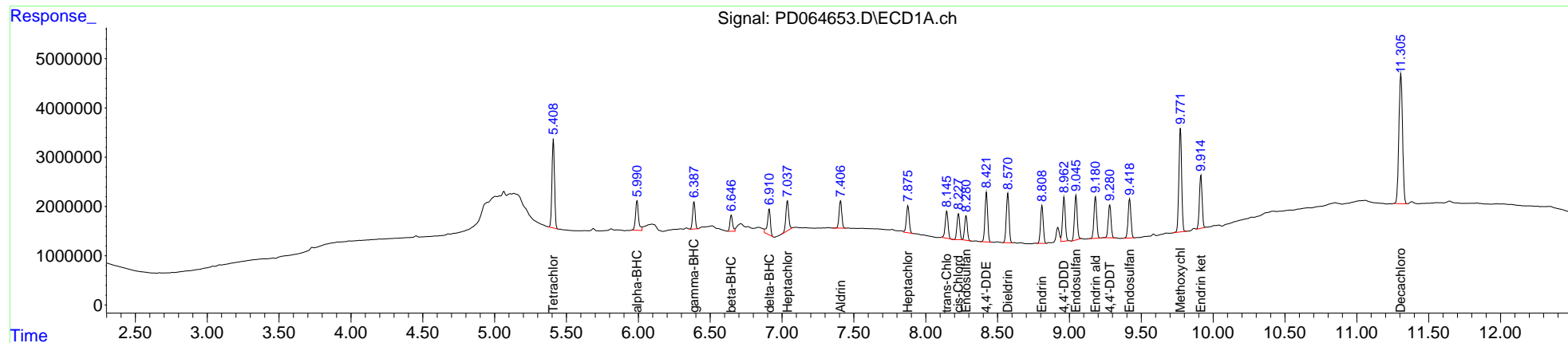
System Monitoring Compounds							
1)	SA Tetrachlo...	5.409	4.617	22225524	192.7E6	18.632	21.088
2)	SA Decachlor...	11.307	10.363	46831556	240.6E6	35.576	40.467
Target Compounds							
2)	A alpha-BHC	5.991	5.319	8800419	61039654	5.402	4.952
3)	MA gamma-BHC...	6.388	5.739	6714495	62673975	4.281	5.496 #
4)	MA Heptachlor	7.038	6.147	8570622	62420924	5.100	5.506m
5)	MB Aldrin	7.408	6.472	7223521	56083297	4.586	5.332
6)	B beta-BHC	6.647	6.114	4251244	27641498	5.449	4.556m
7)	B delta-BHC	6.911	6.376	7508661	49492072	4.315	4.556
8)	B Heptachlo...	7.876	7.045	7412100	49358302	4.317	5.332
9)	A Endosulfan I	8.281	7.447	6461639	41086338	4.584	5.343
10)	B trans-Chl...	8.147	7.321	7538896	45880505	4.705	5.058
11)	B cis-Chlor...	8.228	7.391	7015648	45348206	4.503	5.098
12)	B 4,4'-DDE	8.423	7.602	12958216	81115226	8.991	10.751
13)	MA Dieldrin	8.572	7.733	13427908	79787381	9.004	9.934
14)	MA Endrin	8.808	8.021	10051297	55529572	7.850m	9.666m
15)	B Endosulfa...	9.045	8.332	12005240	61109488	9.245m	10.586
16)	A 4,4'-DDD	8.963	8.185	11859570	63133737	9.661	10.962
17)	MA 4,4'-DDT	9.281	8.447	9059349	44873729	6.940	8.152
18)	B Endrin al...	9.181	8.520	11164685	52282319	9.855	10.594
19)	B Endosulfa...	9.419	8.750	10958329	49415599	7.951	9.168
20)	A Methoxychlor	9.773	9.039	28145136	121.1E6	39.333	47.283
21)	B Endrin ke...	9.915	9.269	14145785	69274562	9.350	11.549

(f)=RT Delta > 1/2 Window (#)=Amounts differ by > 25% (m)=manual int.

Data Path : Z:\pestpcbsrv\HPCHEM1\ECD_D\Data\PD080221\
 Data File : PD064653.D
 Signal(s) : Signal #1: ECD1A.ch Signal #2: ECD2B.ch
 Acq On : 02 Aug 2021 12:10
 Operator : AR\AJ
 Sample : PB138045BS
 Misc :
 ALS Vial : 9 Sample Multiplier: 1

Integration File signal 1: autoint1.e
 Integration File signal 2: autoint2.e
 Quant Time: Aug 03 02:47:04 2021
 Quant Method : Z:\pestpcbsrv\HPCHEM1\ECD_D\Method\PD072721CLP.M
 Quant Title : GC Extractables
 QLast Update : Wed Jul 28 07:07:14 2021
 Response via : Initial Calibration
 Integrator: ChemStation

Volume Inj. : 1 µl
 Signal #1 Phase : ZB-MR2 Signal #2 Phase: ZB-MR1
 Signal #1 Info : 30M x 0.32mm x0.2 Signal #2 Info : 30M x 0.32mm x 0.50µm



Instrument : ECD_D
 Client Sample Id : PLCS045
 Manual Integrations APPROVED
 mohammed
 8/3/2021 3:11:35 PM