

Data Path : Z:\pestpcbsrv\HPCHEM1\ECD\_D\Data\PD080222\  
 Data File : PD071297.D  
 Signal(s) : Signal #1: ECD1A.ch Signal #2: ECD2B.ch  
 Acq On : 02 Aug 2022 09:54  
 Operator : AR\AJ  
 Sample : PB146309BS  
 Misc :  
 ALS Vial : 4 Sample Multiplier: 1

**Instrument :**  
 ECD\_D  
**ClientSampleId :**  
 PLCS309

**Manual Integrations**  
**APPROVED**  
 Reviewed By :Ankita Jodhani 08/03/2022  
 Supervised By :mohammad ahmed 08/03/2022

Integration File signal 1: autoint1.e  
 Integration File signal 2: autoint2.e  
 Quant Time: Aug 03 01:47:49 2022  
 Quant Method : Z:\pestpcbsrv\HPCHEM1\ECD\_D\Method\PD071422CLP.M  
 Quant Title : GC Extractables  
 QLast Update : Thu Jul 14 05:14:58 2022  
 Response via : Initial Calibration  
 Integrator: ChemStation

Volume Inj. : 1 µl  
 Signal #1 Phase : ZB-MR2 Signal #2 Phase: ZB-MR1  
 Signal #1 Info : 30M x 0.32mm x0.2 Signal #2 Info : 30M x 0.32mm x 0.50µm

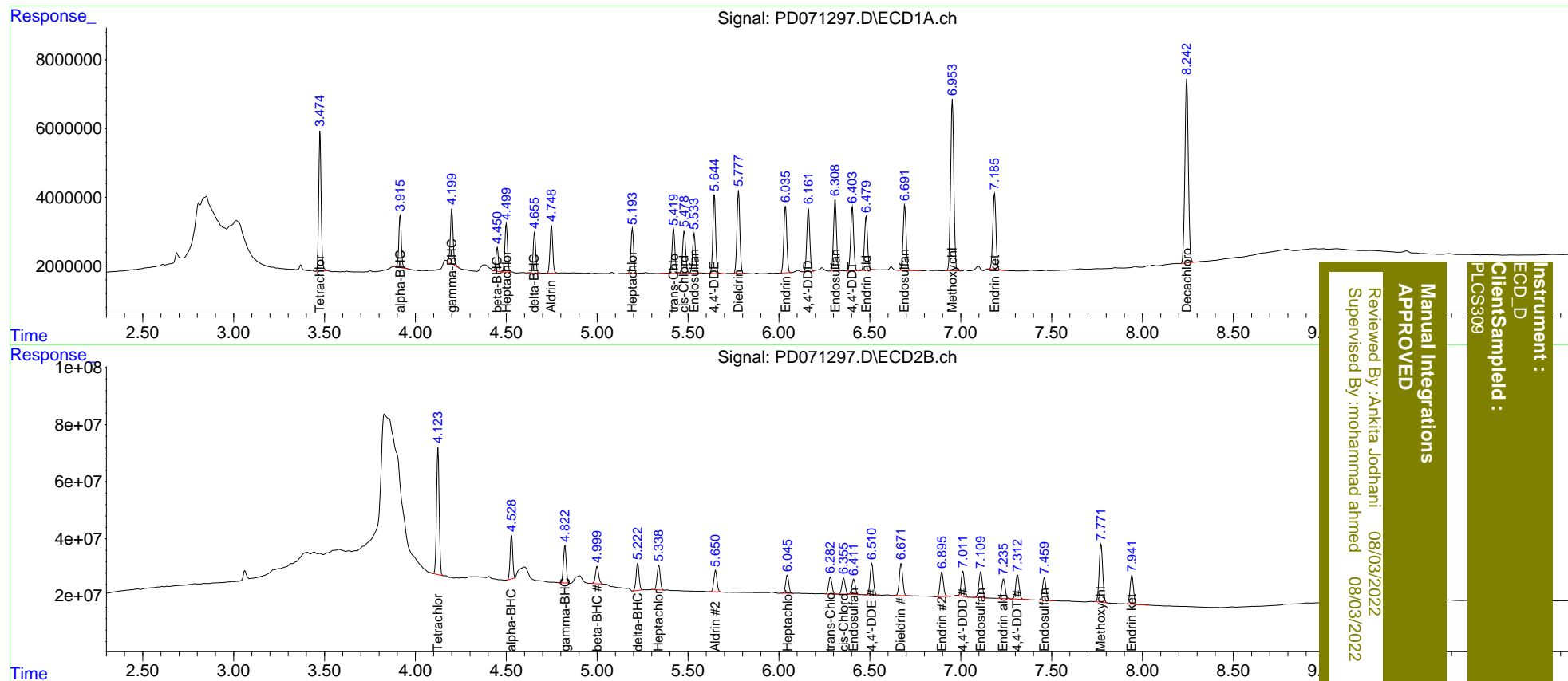
Compound	RT#1	RT#2	Resp#1	Resp#2	ng/ml	ng/ml
-----						
System Monitoring Compounds						
1) SA Tetrachlo...	3.476	4.125	37650826	451.1E6	15.648	19.221
2) SA Decachlor...	8.244	9.321	70175031	286.5E6	27.641	31.020
Target Compounds						
2) A alpha-BHC	3.917	4.530	14633175	153.2E6	3.901	5.077 #
3) MA gamma-BHC...	4.201	4.823	16542828	138.0E6	4.544	5.334
4) MA Heptachlor	4.500	5.339	14061161	103.7E6	4.036	5.174 #
5) MB Aldrin	4.749	5.652	14535692	91543280	4.022	5.260 #
6) B beta-BHC	4.451	5.000	6191280	75060879	3.952	5.613 #
7) B delta-BHC	4.656	5.224	11830819	108.6E6	3.396	4.786 #
8) B Heptachlo...	5.194	6.047	13763878	77406366	4.134	5.212 #
9) A Endosulfan I	5.534	6.412	12706728	68834346	4.215	5.191
10) B trans-Chl...	5.421	6.284	14528039	76199635	4.174	5.061
11) B cis-Chlor...	5.479	6.357	14154121	72233012	4.141	5.001
12) B 4,4'-DDE	5.645	6.512	24391424	137.2E6	7.581	10.004 #
13) MA Dieldrin	5.778	6.673	26645243	146.7E6	7.957	10.597 #
14) MA Endrin	6.036	6.896	22329803	111.1E6	8.055	10.637 #
15) B Endosulfa...	6.310	7.111	23338182	122.2E6	8.510	10.606
16) A 4,4'-DDD	6.161	7.012	21016881	111.2E6	8.070m	10.171 #
17) MA 4,4'-DDT	6.404	7.313	21047587	115.1E6	7.867	10.282 #
18) B Endrin al...	6.480	7.236	18496067	91460844	8.074	9.407
19) B Endosulfa...	6.692	7.461	22438686	106.4E6	8.010	9.381
20) A Methoxychlor	6.954	7.772	61213743	272.7E6	44.268	52.112
21) B Endrin ke...	7.187	7.942	26498319	133.5E6	8.548	10.809 #

(f)=RT Delta > 1/2 Window (#)=Amounts differ by > 25% (m)=manual int.

Data Path : Z:\pestpcbsrv\HPCHEM1\ECD\_D\Data\PD080222\  
 Data File : PD071297.D  
 Signal(s) : Signal #1: ECD1A.ch Signal #2: ECD2B.ch  
 Acq On : 02 Aug 2022 09:54  
 Operator : AR\AJ  
 Sample : PB146309BS  
 Misc :  
 ALS Vial : 4 Sample Multiplier: 1

Integration File signal 1: autoint1.e  
 Integration File signal 2: autoint2.e  
 Quant Time: Aug 03 01:47:49 2022  
 Quant Method : Z:\pestpcbsrv\HPCHEM1\ECD\_D\Method\PD071422CLP.M  
 Quant Title : GC Extractables  
 QLast Update : Thu Jul 14 05:14:58 2022  
 Response via : Initial Calibration  
 Integrator: ChemStation

Volume Inj. : 1 µl  
 Signal #1 Phase : ZB-MR2 Signal #2 Phase: ZB-MR1  
 Signal #1 Info : 30M x 0.32mm x0.2 Signal #2 Info : 30M x 0.32mm x 0.50µm



Instrument :  
 ECD\_D  
 Client Sampled :  
 PLCS309

Manual Integrations  
 APPROVED

Reviewed By : Ankitia Jodhani 08/03/2022  
 Supervised By : mohammad ahmed 08/03/2022