

Data Path : Z:\pestpcbsrv\HPCHEM1\ECD_D\Data\PD080223\
 Data File : PD076979.D
 Signal(s) : Signal #1: ECD1A.ch Signal #2: ECD2B.ch
 Acq On : 02 Aug 2023 13:34
 Operator : AR\AJ
 Sample : INDB305
 Misc :
 ALS Vial : 18 Sample Multiplier: 1

Instrument :
 ECD_D
 ClientSampleId :

Integration File signal 1: autoint1.e
 Integration File signal 2: autoint2.e
 Quant Time: Aug 02 22:15:12 2023
 Quant Method : Z:\pestpcbsrv\HPCHEM1\ECD_D\Method\PD071423CLP.M
 Quant Title : GC Extractables
 QLast Update : Fri Jul 14 14:58:34 2023
 Response via : Initial Calibration
 Integrator: ChemStation

Volume Inj. : 1 µl
 Signal #1 Phase : ZB-MR2 Signal #2 Phase: ZB-MR2
 Signal #1 Info : 30M x 0.32mm x0.5 Signal #2 Info : 30M x 0.32mm x 0.25µm

Compound	RT#1	RT#2	Resp#1	Resp#2	ng/ml	ng/ml

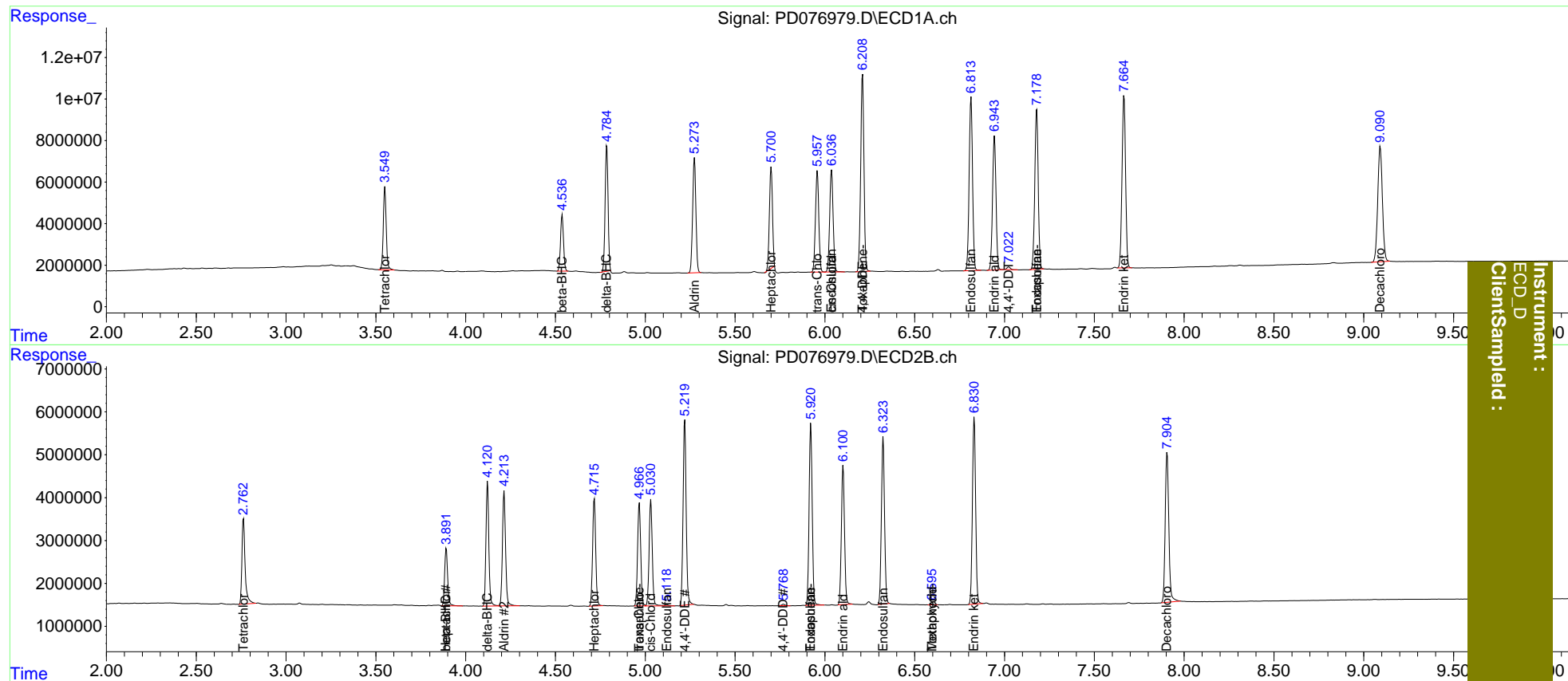
System Monitoring Compounds						
1) SA Tetrachlo...	3.550	2.763	45586114	24665869	21.429	23.108
2) SA Decachlor...	9.092	7.905	100.4E6	48853390	41.327	45.573
Target Compounds						
4) MA Heptachlor	0.000	3.892f	0	15444381	N.D.	10.329
5) MB Aldrin	5.274	4.214	69666277	32354140	20.374	21.498
6) B beta-BHC	4.537	3.892	31307841	15444381	20.598	21.559
7) B delta-BHC	4.786	4.122	68936423	32637718	20.557	21.383
8) B Heptachlo...	5.701	4.716	58245190	29736984	19.440	21.137
9) A Endosulfan I	6.037f	5.120	65183023	411608	22.886	0.332 #
10) B trans-Chl...	5.958	4.967	62908857	28869926	20.459	21.350
11) B cis-Chlor...	6.037	5.031	65183023	30193304	20.561	21.401
12) B 4,4'-DDE	6.210	5.220	120.2E6	51632802	41.248	42.722
15) B Endosulfa...	6.814	5.922	110.2E6	51028707	41.452	42.429
16) A 4,4'-DDD	0.000	5.769	0	432996	N.D.	0.457
17) MA 4,4'-DDT	7.024	0.000	1686368	0	0.755	N.D. #
18) B Endrin al...	6.944	6.102	86208265	39537900	46.104	47.136
19) B Endosulfa...	7.179	6.324	102.6E6	47158425	41.075	42.267
20) A Methoxychlor	0.000	6.596	0	186476	N.D.	0.349
21) B Endrin ke...	7.665	6.832	113.9E6	54047613	41.123	42.239
22) Toxaphene-1	6.210f	4.967	120.2E6	28869926	5409.162	3923.934 #
24) Toxaphene-3	0.000	5.922f	0	51028707	N.D.	5565.257
25) Toxaphene-4	7.179	6.596	102.6E6	186476	1710.520	7.432 #

(f)=RT Delta > 1/2 Window (#)=Amounts differ by > 25% (m)=manual int.

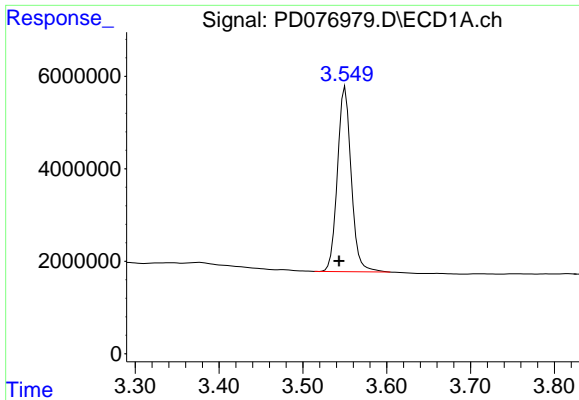
Data Path : Z:\pestpcbsrv\HPCHEM1\ECD_D\Data\PD080223\
 Data File : PD076979.D
 Signal(s) : Signal #1: ECD1A.ch Signal #2: ECD2B.ch
 Acq On : 02 Aug 2023 13:34
 Operator : AR\AJ
 Sample : INDB305
 Misc :
 ALS Vial : 18 Sample Multiplier: 1

Integration File signal 1: autoint1.e
 Integration File signal 2: autoint2.e
 Quant Time: Aug 02 22:15:12 2023
 Quant Method : Z:\pestpcbsrv\HPCHEM1\ECD_D\Method\PD071423CLP.M
 Quant Title : GC Extractables
 QLast Update : Fri Jul 14 14:58:34 2023
 Response via : Initial Calibration
 Integrator: ChemStation

Volume Inj. : 1 µl
 Signal #1 Phase : ZB-MR1 Signal #2 Phase: ZB-MR2
 Signal #1 Info : 30M x 0.32mm x0.5 Signal #2 Info : 30M x 0.32mm x 0.25µm

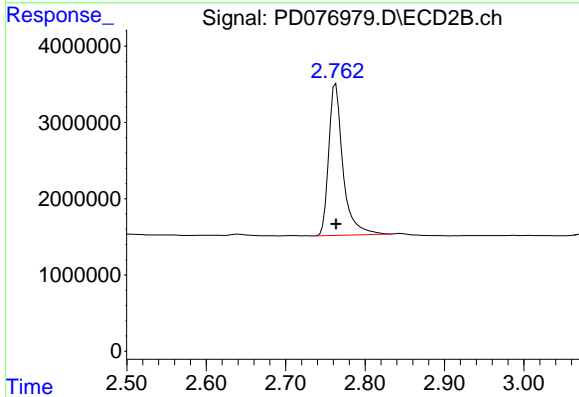


Instrument :
 ECD_D
 Client/Sampled :

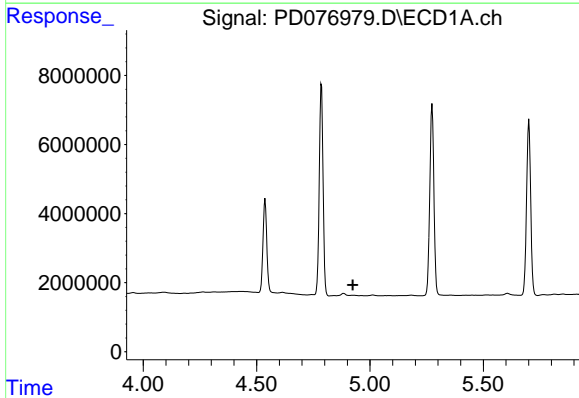


#1 Tetrachloro-m-xylene
 R.T.: 3.550 min
 Delta R.T.: 0.007 min
 Response: 45586114
 Conc: 21.43 ng/ml

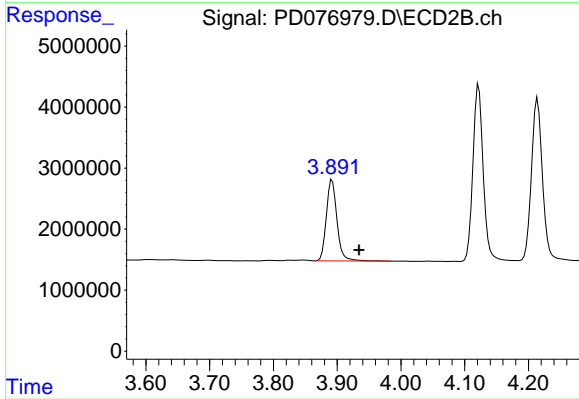
Instrument :
 ECD_D
 ClientSampleId :



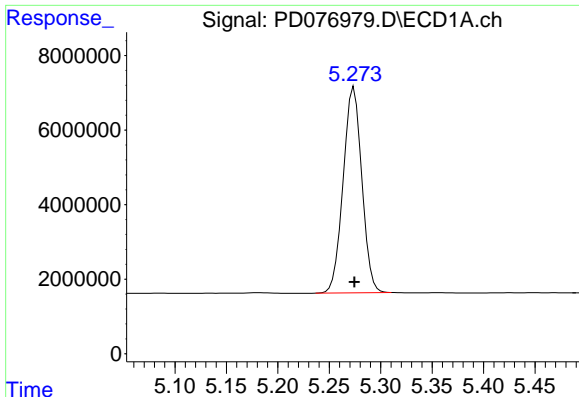
#1 Tetrachloro-m-xylene
 R.T.: 2.763 min
 Delta R.T.: 0.000 min
 Response: 24665869
 Conc: 23.11 ng/ml



#4 Heptachlor
 R.T.: 0.000 min
 Exp R.T. : 4.924 min
 Response: 0
 Conc: N.D.



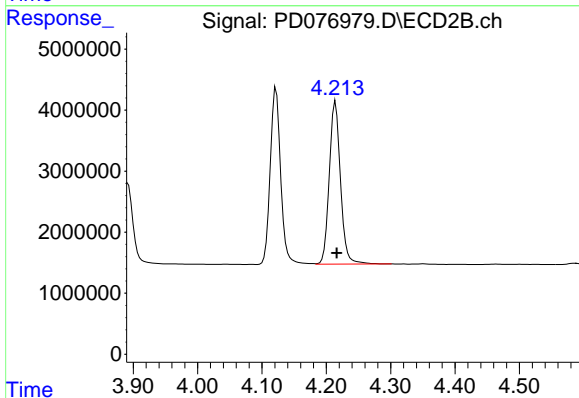
#4 Heptachlor
 R.T.: 3.892 min
 Delta R.T.: -0.042 min
 Response: 15444381
 Conc: 10.33 ng/ml



#5 Aldrin

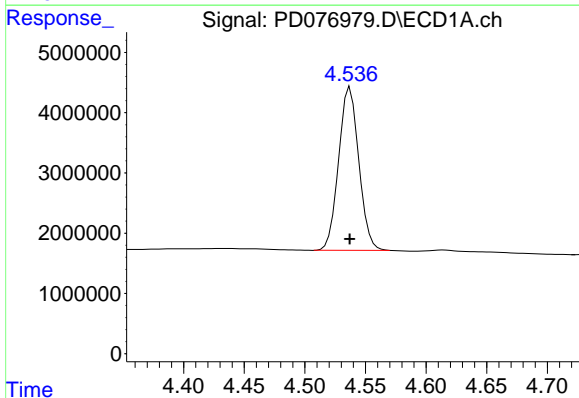
R.T.: 5.274 min
 Delta R.T.: 0.000 min
 Response: 69666277
 Conc: 20.37 ng/ml

Instrument :
 ECD_D
 ClientSampleId :



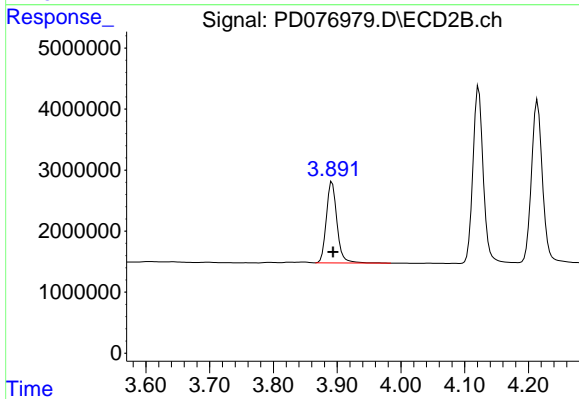
#5 Aldrin

R.T.: 4.214 min
 Delta R.T.: -0.002 min
 Response: 32354140
 Conc: 21.50 ng/ml



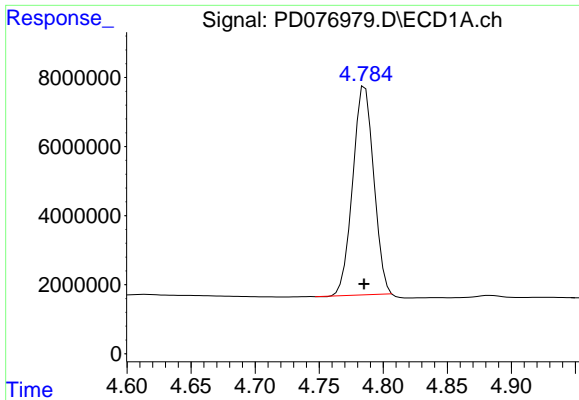
#6 beta-BHC

R.T.: 4.537 min
 Delta R.T.: 0.000 min
 Response: 31307841
 Conc: 20.60 ng/ml



#6 beta-BHC

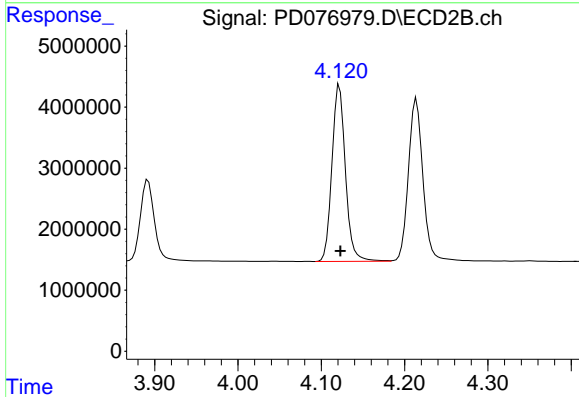
R.T.: 3.892 min
 Delta R.T.: -0.002 min
 Response: 15444381
 Conc: 21.56 ng/ml



#7 delta-BHC

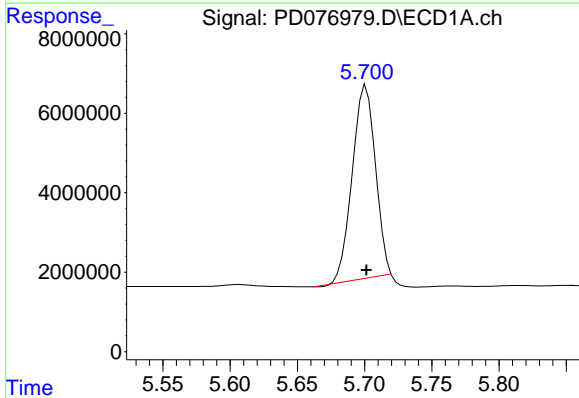
R.T.: 4.786 min
 Delta R.T.: 0.000 min
 Response: 68936423
 Conc: 20.56 ng/ml

Instrument :
 ECD_D
 ClientSampleId :



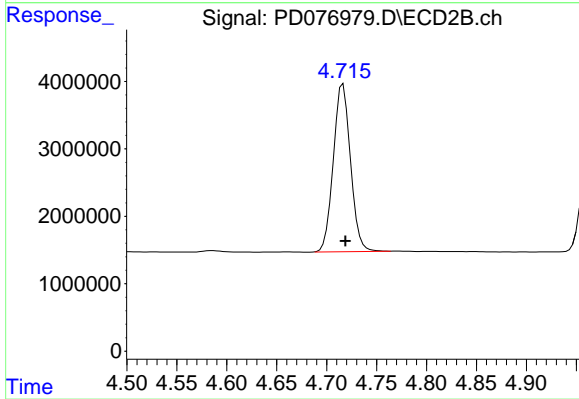
#7 delta-BHC

R.T.: 4.122 min
 Delta R.T.: -0.001 min
 Response: 32637718
 Conc: 21.38 ng/ml



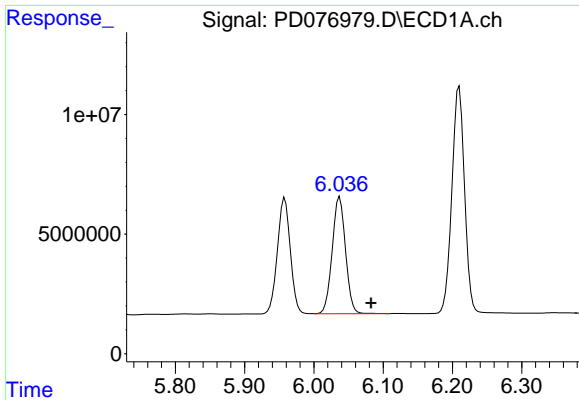
#8 Heptachlor epoxide

R.T.: 5.701 min
 Delta R.T.: 0.000 min
 Response: 58245190
 Conc: 19.44 ng/ml



#8 Heptachlor epoxide

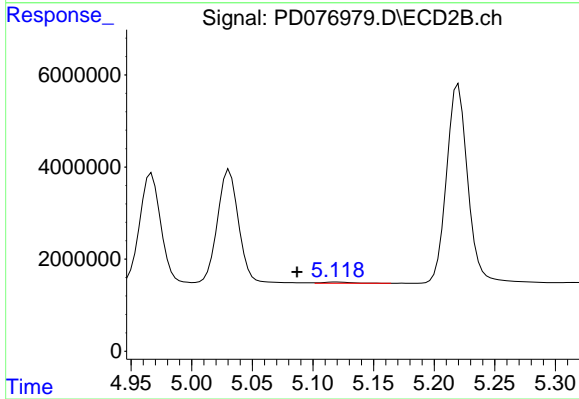
R.T.: 4.716 min
 Delta R.T.: -0.002 min
 Response: 29736984
 Conc: 21.14 ng/ml



#9 Endosulfan I

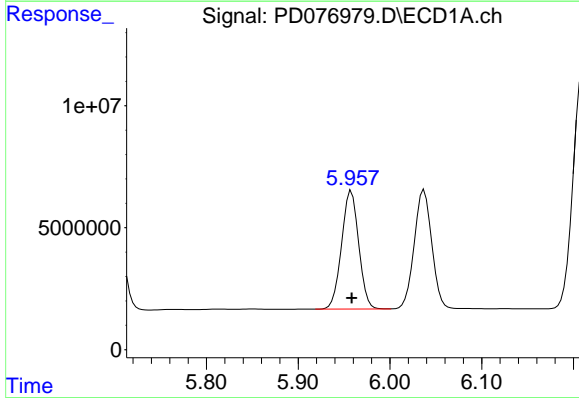
R.T.: 6.037 min
 Delta R.T.: -0.045 min
 Response: 65183023
 Conc: 22.89 ng/ml

Instrument :
 ECD_D
 ClientSampleId :



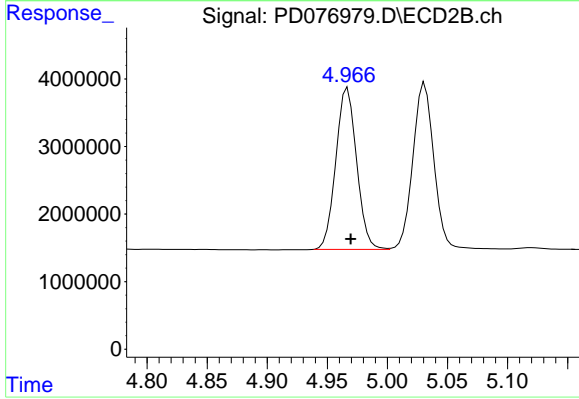
#9 Endosulfan I

R.T.: 5.120 min
 Delta R.T.: 0.033 min
 Response: 411608
 Conc: 0.33 ng/ml



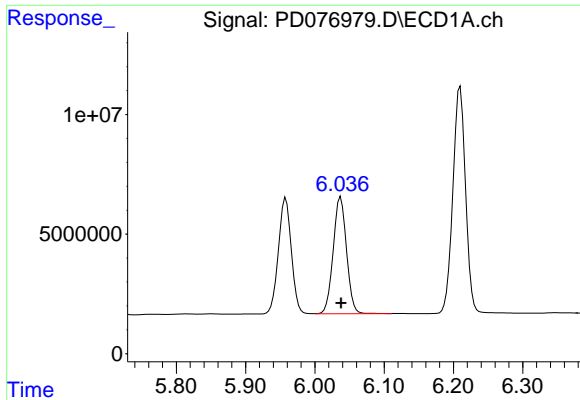
#10 trans-Chlordane

R.T.: 5.958 min
 Delta R.T.: 0.000 min
 Response: 62908857
 Conc: 20.46 ng/ml



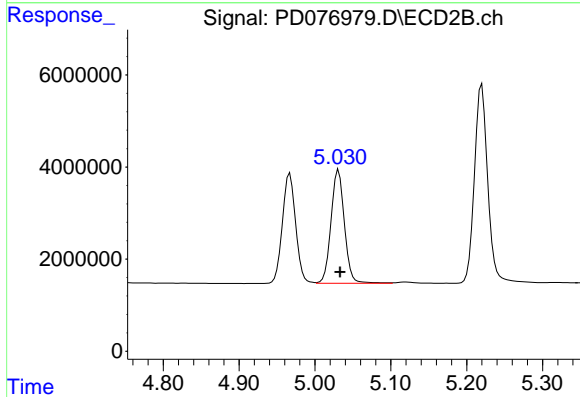
#10 trans-Chlordane

R.T.: 4.967 min
 Delta R.T.: -0.003 min
 Response: 28869926
 Conc: 21.35 ng/ml

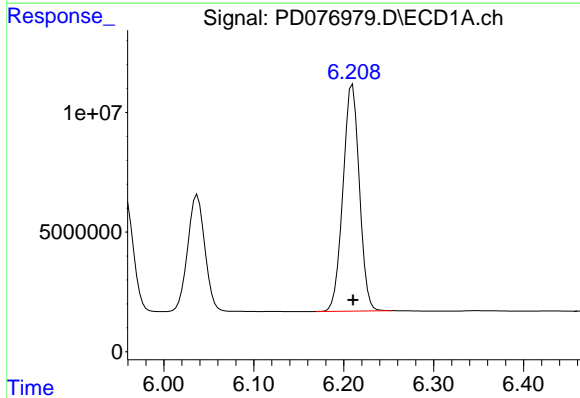


#11 cis-Chlordane
 R.T.: 6.037 min
 Delta R.T.: 0.000 min
 Response: 65183023
 Conc: 20.56 ng/ml

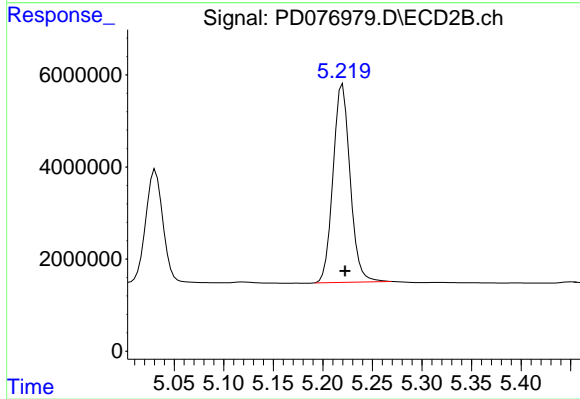
Instrument :
 ECD_D
 ClientSampleId :



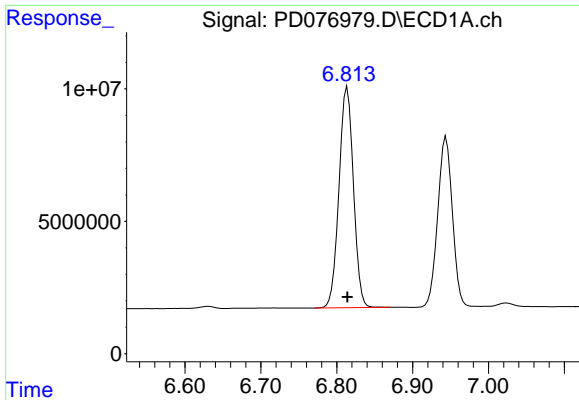
#11 cis-Chlordane
 R.T.: 5.031 min
 Delta R.T.: -0.002 min
 Response: 30193304
 Conc: 21.40 ng/ml



#12 4,4'-DDE
 R.T.: 6.210 min
 Delta R.T.: 0.000 min
 Response: 120171271
 Conc: 41.25 ng/ml

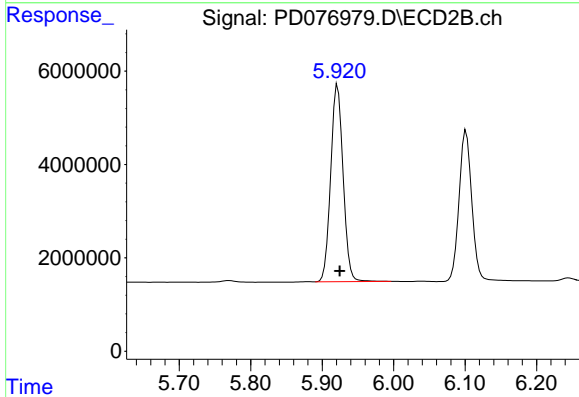


#12 4,4'-DDE
 R.T.: 5.220 min
 Delta R.T.: -0.002 min
 Response: 51632802
 Conc: 42.72 ng/ml

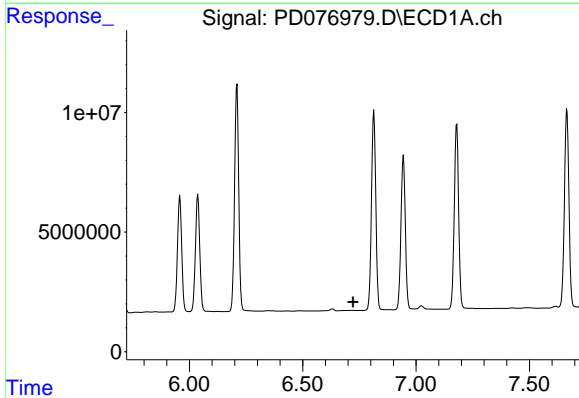


#15 Endosulfan II
 R.T.: 6.814 min
 Delta R.T.: 0.000 min
 Response: 110213637
 Conc: 41.45 ng/ml

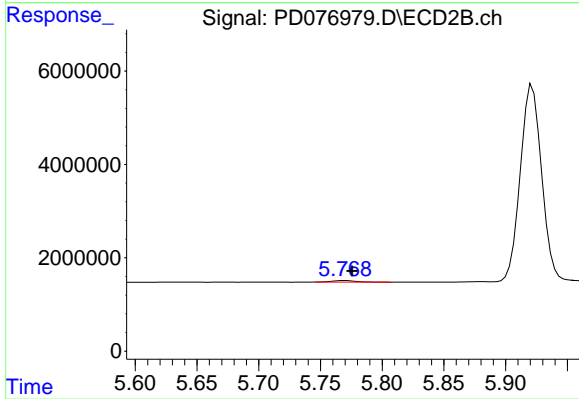
Instrument :
 ECD_D
 ClientSampleId :



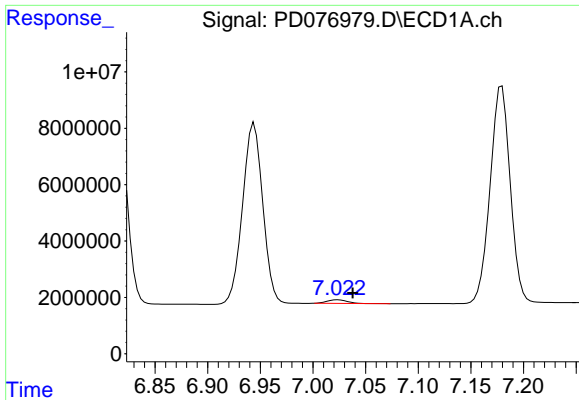
#15 Endosulfan II
 R.T.: 5.922 min
 Delta R.T.: -0.003 min
 Response: 51028707
 Conc: 42.43 ng/ml



#16 4,4'-DDD
 R.T.: 0.000 min
 Exp R.T. : 6.722 min
 Response: 0
 Conc: N.D.

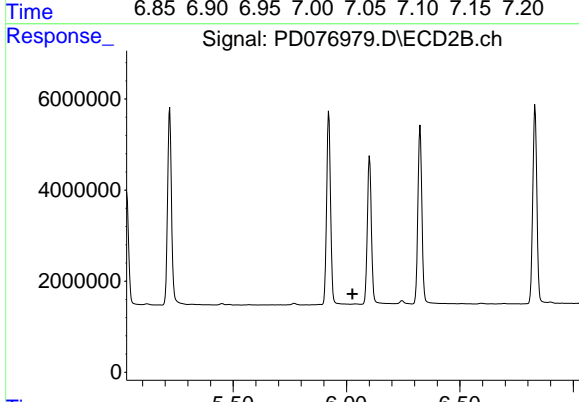


#16 4,4'-DDD
 R.T.: 5.769 min
 Delta R.T.: -0.006 min
 Response: 432996
 Conc: 0.46 ng/ml

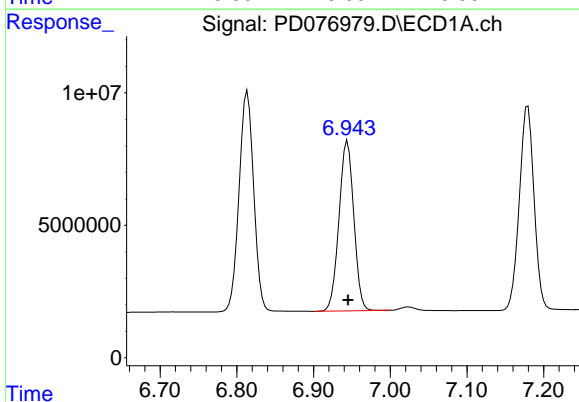


#17 4,4'-DDT
 R.T.: 7.024 min
 Delta R.T.: -0.014 min
 Response: 1686368
 Conc: 0.76 ng/ml

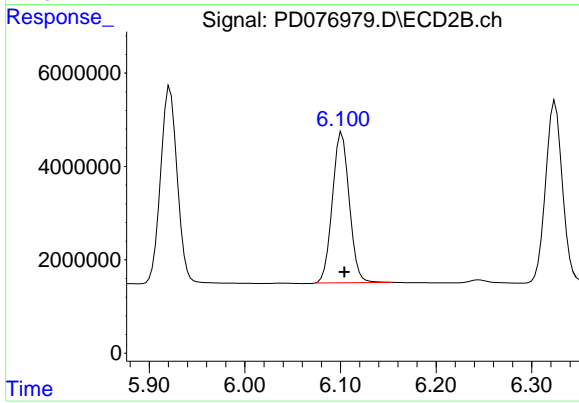
Instrument :
 ECD_D
 ClientSampleId :



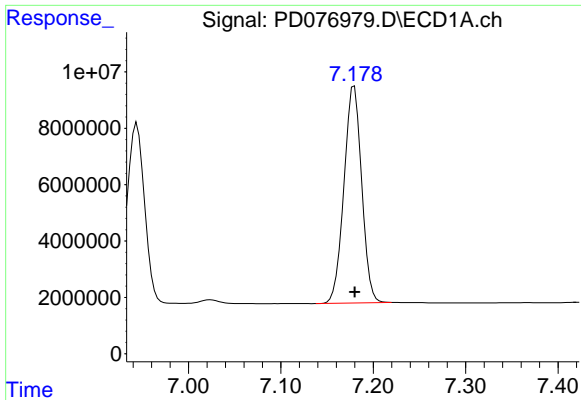
#17 4,4'-DDT
 R.T.: 0.000 min
 Exp R.T. : 6.027 min
 Response: 0
 Conc: N.D.



#18 Endrin aldehyde
 R.T.: 6.944 min
 Delta R.T.: 0.000 min
 Response: 86208265
 Conc: 46.10 ng/ml



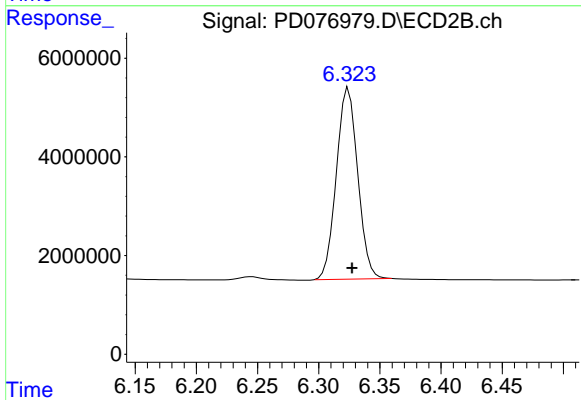
#18 Endrin aldehyde
 R.T.: 6.102 min
 Delta R.T.: -0.003 min
 Response: 39537900
 Conc: 47.14 ng/ml



#19 Endosulfan Sulfate

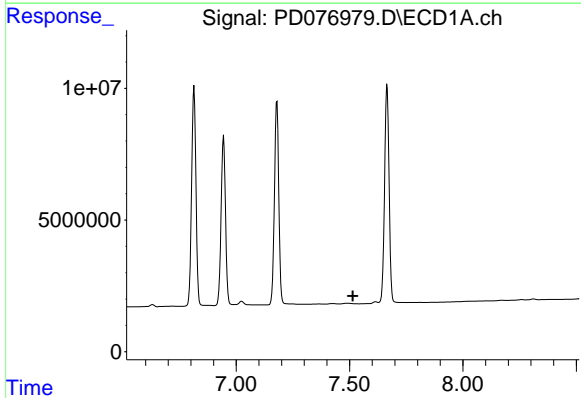
R.T.: 7.179 min
 Delta R.T.: 0.000 min
 Response: 102579422
 Conc: 41.08 ng/ml

Instrument :
 ECD_D
 ClientSampleId :



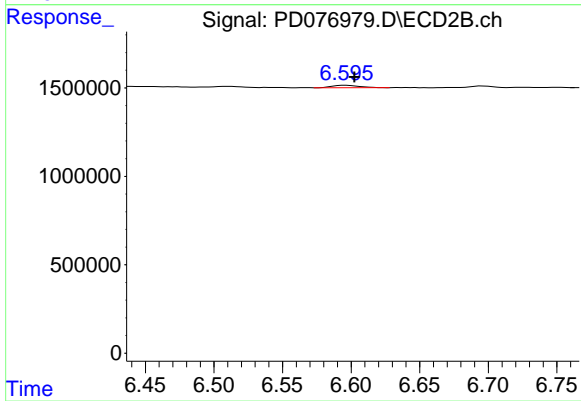
#19 Endosulfan Sulfate

R.T.: 6.324 min
 Delta R.T.: -0.003 min
 Response: 47158425
 Conc: 42.27 ng/ml



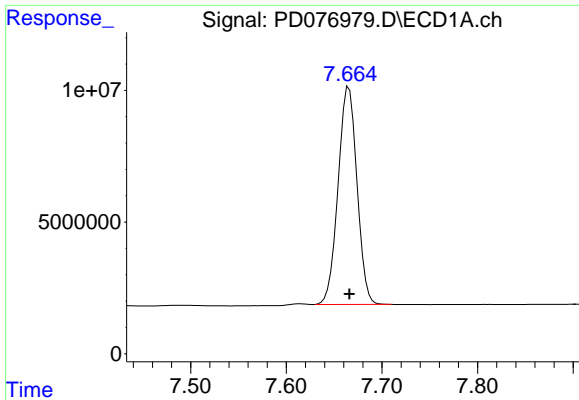
#20 Methoxychlor

R.T.: 0.000 min
 Exp R.T. : 7.514 min
 Response: 0
 Conc: N.D.



#20 Methoxychlor

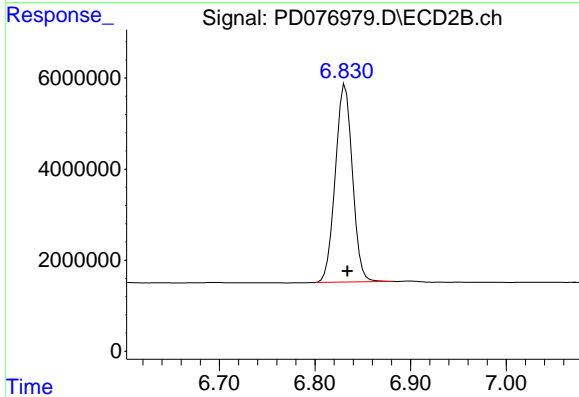
R.T.: 6.596 min
 Delta R.T.: -0.006 min
 Response: 186476
 Conc: 0.35 ng/ml



#21 Endrin ketone

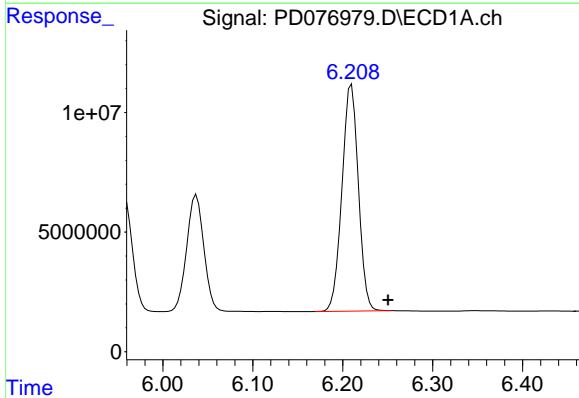
R.T.: 7.665 min
 Delta R.T.: 0.000 min
 Response: 113860719
 Conc: 41.12 ng/ml

Instrument :
 ECD_D
 ClientSampleId :



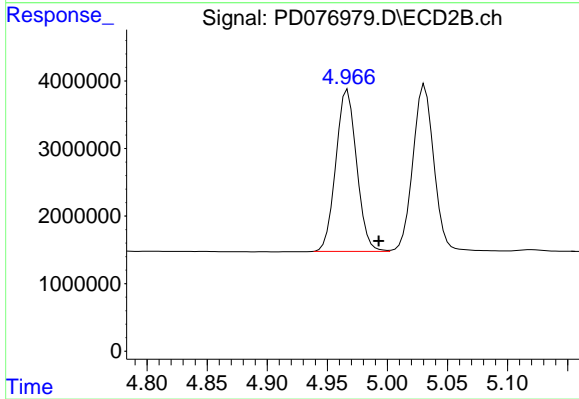
#21 Endrin ketone

R.T.: 6.832 min
 Delta R.T.: -0.002 min
 Response: 54047613
 Conc: 42.24 ng/ml



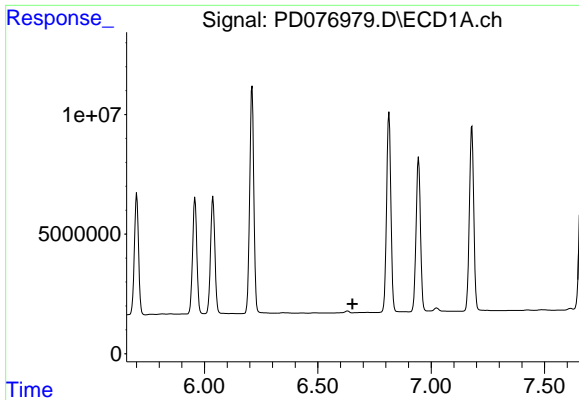
#22 Toxaphene-1

R.T.: 6.210 min
 Delta R.T.: -0.041 min
 Response: 120171271
 Conc: 5409.16 ng/ml



#22 Toxaphene-1

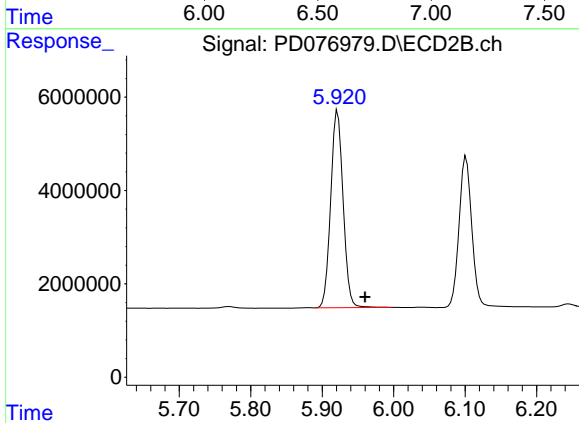
R.T.: 4.967 min
 Delta R.T.: -0.026 min
 Response: 28869926
 Conc: 3923.93 ng/ml



#24 Toxaphene-3

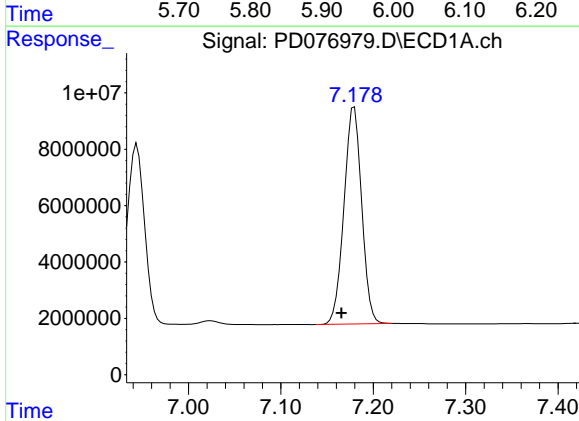
R.T.: 0.000 min
 Exp R.T.: 6.653 min
 Response: 0
 Conc: N.D.

Instrument :
 ECD_D
 ClientSampleId :



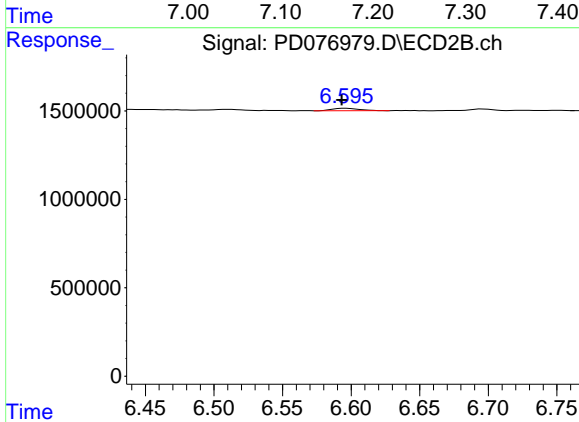
#24 Toxaphene-3

R.T.: 5.922 min
 Delta R.T.: -0.038 min
 Response: 51028707
 Conc: 5565.26 ng/ml



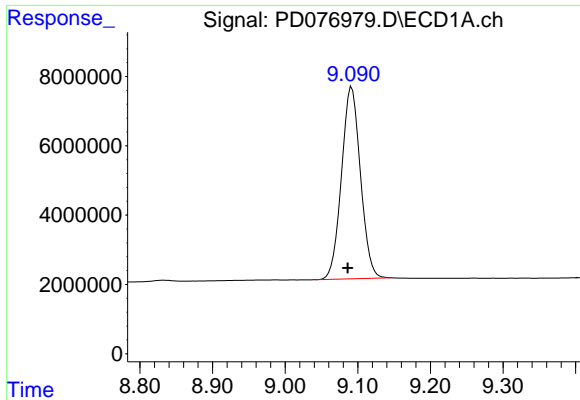
#25 Toxaphene-4

R.T.: 7.179 min
 Delta R.T.: 0.014 min
 Response: 102579422
 Conc: 1710.52 ng/ml



#25 Toxaphene-4

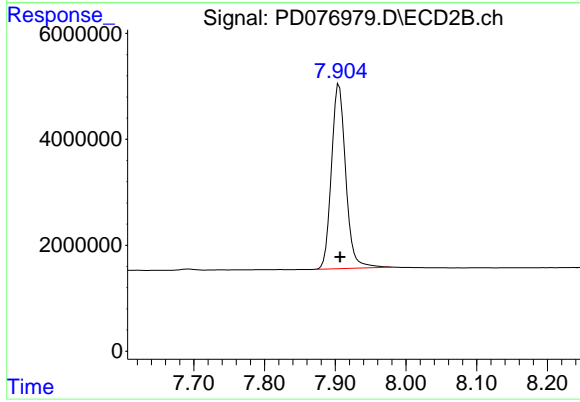
R.T.: 6.596 min
 Delta R.T.: 0.003 min
 Response: 186476
 Conc: 7.43 ng/ml



#27 Decachlorobiphenyl

R.T.: 9.092 min
Delta R.T.: 0.006 min
Response: 100403224
Conc: 41.33 ng/ml

Instrument :
ECD_D
ClientSampleId :



#27 Decachlorobiphenyl

R.T.: 7.905 min
Delta R.T.: -0.001 min
Response: 48853390
Conc: 45.57 ng/ml