

Data Path : Z:\pestpcbsrv\HPCHEM1\ECD_D\Data\PD080421\
 Data File : PD064720.D
 Signal(s) : Signal #1: ECD1A.ch Signal #2: ECD2B.ch
 Acq On : 04 Aug 2021 13:07
 Operator : AR\AJ
 Sample : M3169-10
 Misc :
 ALS Vial : 15 Sample Multiplier: 1

Instrument :
 ECD_D
 ClientSampleId :
 C00A9

Integration File signal 1: autoint1.e
 Integration File signal 2: autoint2.e
 Quant Time: Aug 05 05:54:54 2021
 Quant Method : Z:\pestpcbsrv\HPCHEM1\ECD_D\Method\PD072721CLP.M
 Quant Title : GC Extractables
 QLast Update : Wed Jul 28 07:07:14 2021
 Response via : Initial Calibration
 Integrator: ChemStation

Volume Inj. : 1 µl
 Signal #1 Phase : ZB-MR2 Signal #2 Phase: ZB-MR1
 Signal #1 Info : 30M x 0.32mm x0.2 Signal #2 Info : 30M x 0.32mm x 0.50µm

Compound	RT#1	RT#2	Resp#1	Resp#2	ng/ml	ng/ml

System Monitoring Compounds						
1) SA Tetrachlo...	5.405	4.617	17645640	155.9E6	14.792	17.064
27) SA Decachlor...	11.303	10.360	21892284	128.7E6	16.631	21.644 #
Target Compounds						
2) A alpha-BHC	6.023f	5.300	1966884	13794576	1.207	1.119
3) MA gamma-BHC...	6.397	5.733	946982	73495042	0.604	6.445 #
4) MA Heptachlor	0.000	6.148	0	2515578	N.D.	0.222
5) MB Aldrin	7.423	6.463	3461058	37041715	2.197	3.521 #
6) B beta-BHC	6.637	6.123	550999	30885530	0.706	5.091 #
7) B delta-BHC	0.000	6.359	0	27551679	N.D.	2.536
8) B Heptachlor...	7.873	7.045	5808021	32662828	3.383	3.528
9) A Endosulfan I	8.228f	7.466	45648045	85595998	32.382	11.131 #
10) B trans-Chl...	8.139	7.322	53343156	129.8E6	33.288	14.305 #
11) B cis-Chlor...	8.228	7.390	45648045	209.1E6	29.297	23.510
12) B 4,4'-DDE	8.432	7.605	1217530	27874249	0.845	3.694 #
13) MA Dieldrin	8.568	7.738	3945522	45844037	2.646	5.708 #
14) MA Endrin	8.822	8.033	682033	10423130	0.533	1.814 #
15) B Endosulfa...	9.036	8.336	3936666	38700708	3.031	6.704 #
16) A 4,4'-DDD	8.957	8.176	13917464	36593990	11.338	6.354 #
17) MA 4,4'-DDT	9.245f	8.438	4613831	41971996	3.534	7.625 #
18) B Endrin al...	9.170	8.541	1272661	-3659974	1.123	N.D. #
19) B Endosulfa...	9.391	8.750	10808330	65316595	7.842	12.118 #
20) A Methoxychlor	9.750	9.063	4559456	47595419	6.372	18.588 #
21) B Endrin ke...	9.876f	9.306	31934523	-27523273	21.108	N.D. #
22) Toxaphene-1	8.478	7.703	1117676	103.9E6	119.778	2760.159 #
23) Toxaphene-2	8.990	7.969	1158008	1129479	66.428	13.375 #
24) Toxaphene-3	9.245	8.390	4613831	17514346	380.626	152.861 #
25) Toxaphene-4	9.391	8.750	10808330	65316595	449.919	1159.500 #
26) Toxaphene-5	9.876	9.159	31934523	4647753	1729.660	36.971 #

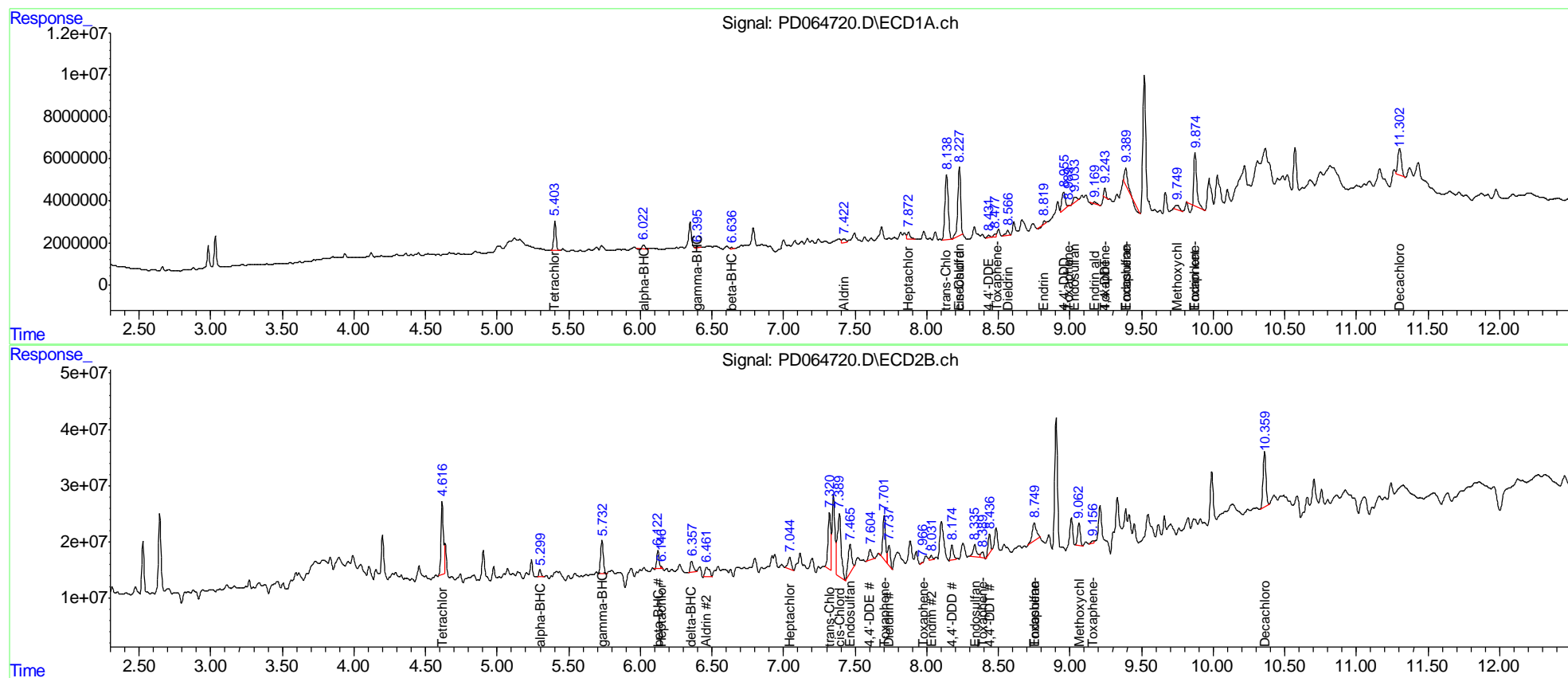
(f)=RT Delta > 1/2 Window (#)=Amounts differ by > 25% (m)=manual int.

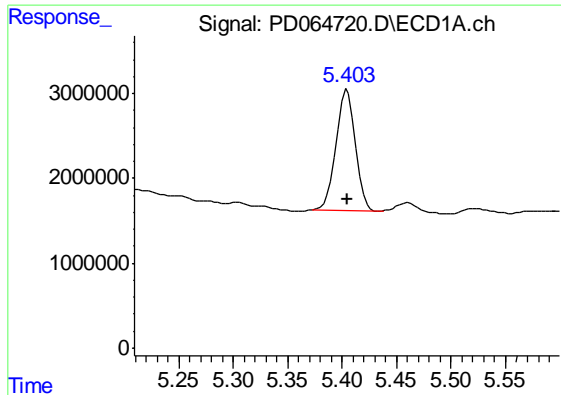
Data Path : Z:\pestpcbsrv\HPCHEM1\ECD_D\Data\PD080421\
 Data File : PD064720.D
 Signal(s) : Signal #1: ECD1A.ch Signal #2: ECD2B.ch
 Acq On : 04 Aug 2021 13:07
 Operator : AR\AJ
 Sample : M3169-10
 Misc :
 ALS Vial : 15 Sample Multiplier: 1

Instrument :
 ECD_D
 Client Sampled :
 C00A9

Integration File signal 1: autoint1.e
 Integration File signal 2: autoint2.e
 Quant Time: Aug 05 05:54:54 2021
 Quant Method : Z:\pestpcbsrv\HPCHEM1\ECD_D\Method\PD072721CLP.M
 Quant Title : GC Extractables
 QLast Update : Wed Jul 28 07:07:14 2021
 Response via : Initial Calibration
 Integrator: ChemStation

Volume Inj. : 1 µl
 Signal #1 Phase : ZB-MR2 Signal #2 Phase: ZB-MR1
 Signal #1 Info : 30M x 0.32mm x0.2 Signal #2 Info : 30M x 0.32mm x 0.50µm

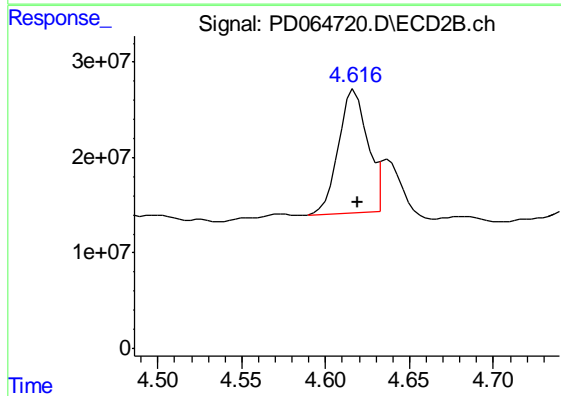




#1 Tetrachloro-m-xylene

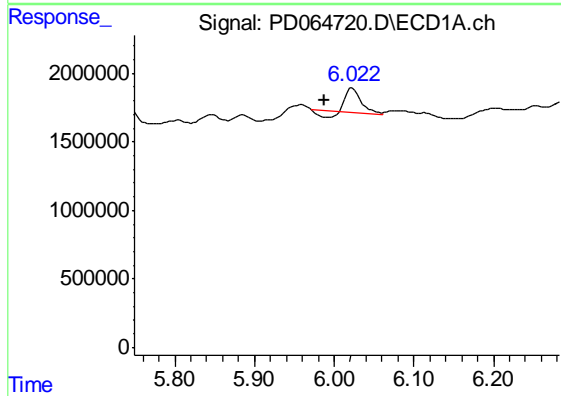
R.T.: 5.405 min
 Delta R.T.: 0.000 min
 Response: 17645640
 Conc: 14.79 ng/ml

Instrument :
 ECD_D
 ClientSampleId :
 C00A9



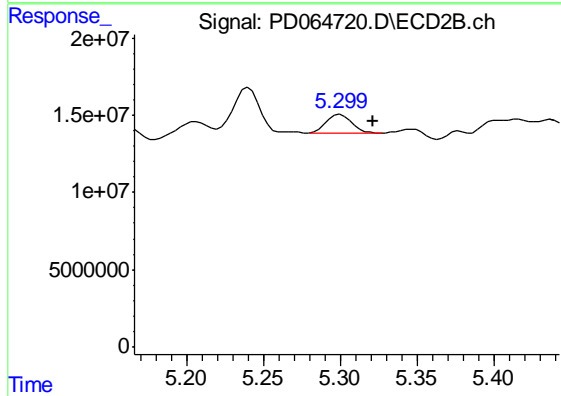
#1 Tetrachloro-m-xylene

R.T.: 4.617 min
 Delta R.T.: -0.002 min
 Response: 155929847
 Conc: 17.06 ng/ml



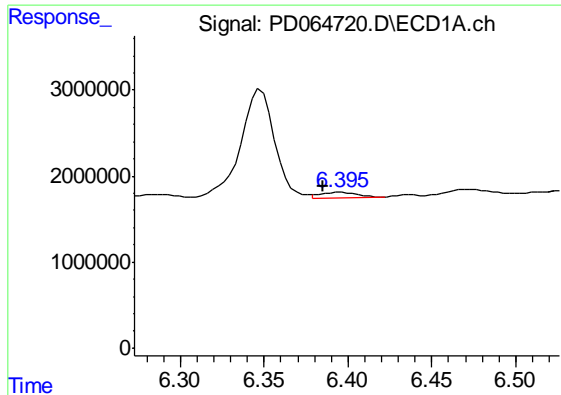
#2 alpha-BHC

R.T.: 6.023 min
 Delta R.T.: 0.035 min
 Response: 1966884
 Conc: 1.21 ng/ml



#2 alpha-BHC

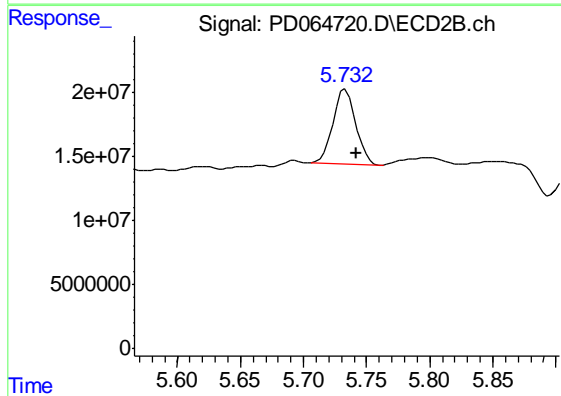
R.T.: 5.300 min
 Delta R.T.: -0.022 min
 Response: 13794576
 Conc: 1.12 ng/ml



#3 gamma-BHC (Lindane)

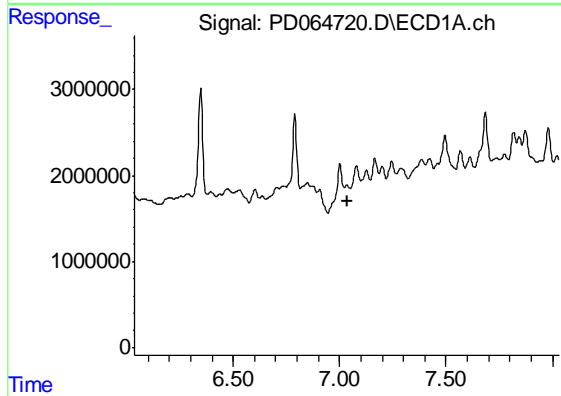
R.T.: 6.397 min
 Delta R.T.: 0.012 min
 Response: 946982
 Conc: 0.60 ng/ml

Instrument :
 ECD_D
 ClientSampled :
 C00A9



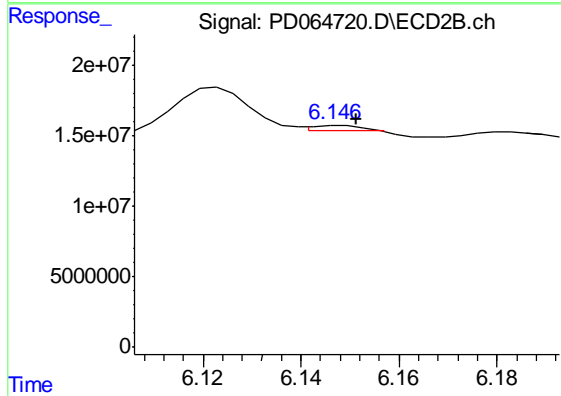
#3 gamma-BHC (Lindane)

R.T.: 5.733 min
 Delta R.T.: -0.009 min
 Response: 73495042
 Conc: 6.44 ng/ml



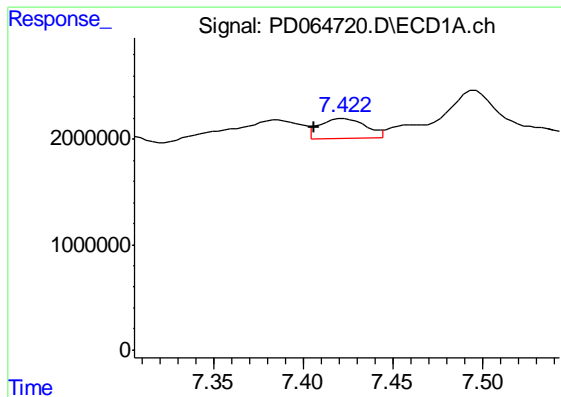
#4 Heptachlor

R.T.: 0.000 min
 Exp R.T. : 7.035 min
 Response: 0
 Conc: N.D.



#4 Heptachlor

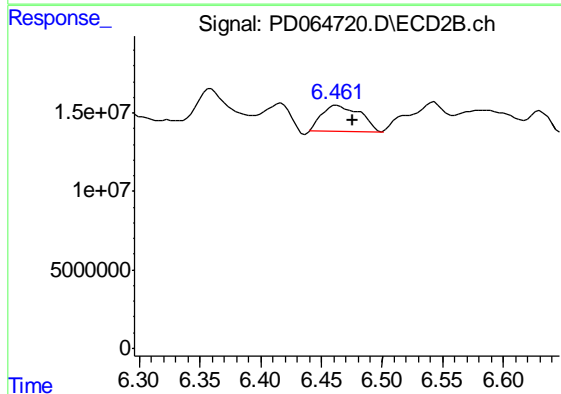
R.T.: 6.148 min
 Delta R.T.: -0.003 min
 Response: 2515578
 Conc: 0.22 ng/ml



#5 Aldrin

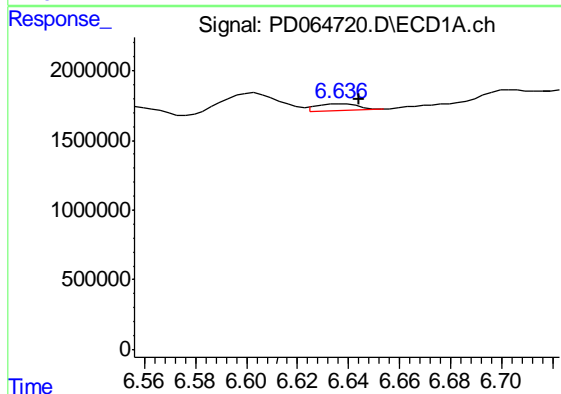
R.T.: 7.423 min
 Delta R.T.: 0.017 min
 Response: 3461058
 Conc: 2.20 ng/ml

Instrument :
 ECD_D
 ClientSampled :
 C00A9



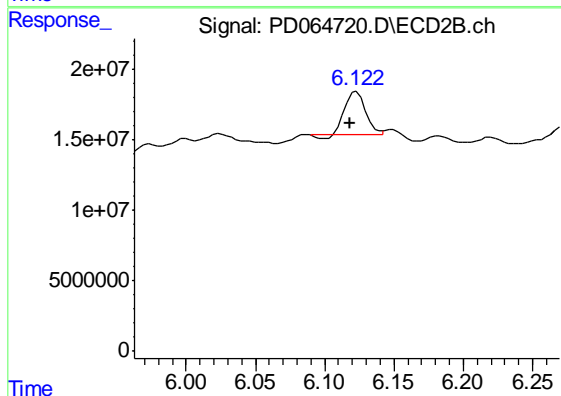
#5 Aldrin

R.T.: 6.463 min
 Delta R.T.: -0.013 min
 Response: 37041715
 Conc: 3.52 ng/ml



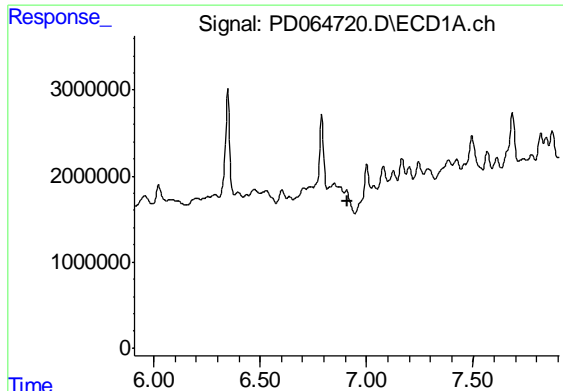
#6 beta-BHC

R.T.: 6.637 min
 Delta R.T.: -0.007 min
 Response: 550999
 Conc: 0.71 ng/ml



#6 beta-BHC

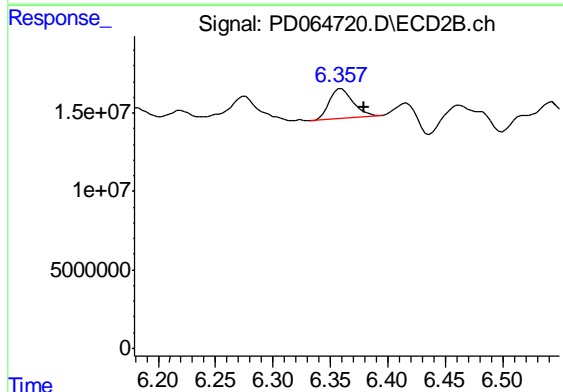
R.T.: 6.123 min
 Delta R.T.: 0.005 min
 Response: 30885530
 Conc: 5.09 ng/ml



#7 delta-BHC

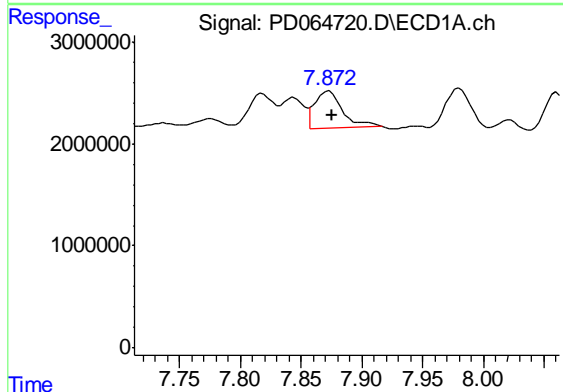
R.T.: 0.000 min
 Exp R.T. : 6.909 min
 Response: 0
 Conc: N.D.

Instrument :
 ECD_D
 ClientSampled :
 C00A9



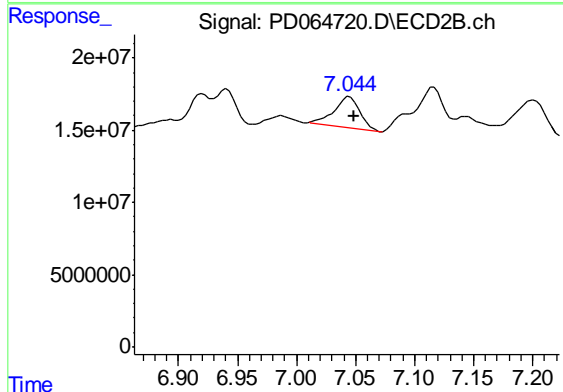
#7 delta-BHC

R.T.: 6.359 min
 Delta R.T.: -0.021 min
 Response: 27551679
 Conc: 2.54 ng/ml



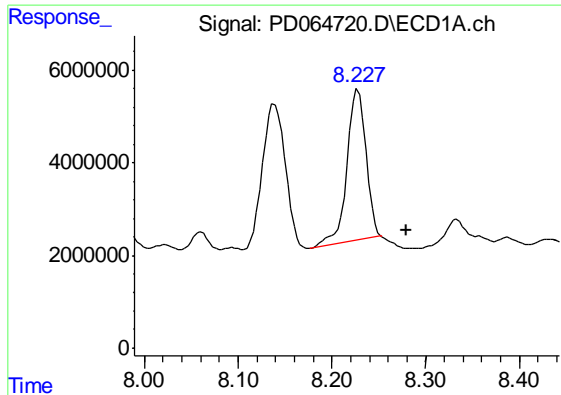
#8 Heptachlor epoxide

R.T.: 7.873 min
 Delta R.T.: -0.002 min
 Response: 5808021
 Conc: 3.38 ng/ml



#8 Heptachlor epoxide

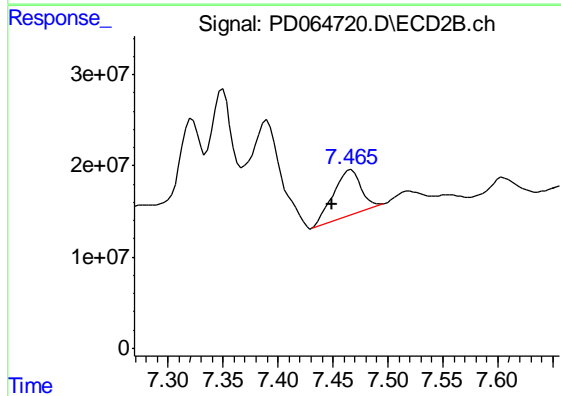
R.T.: 7.045 min
 Delta R.T.: -0.004 min
 Response: 32662828
 Conc: 3.53 ng/ml



#9 Endosulfan I

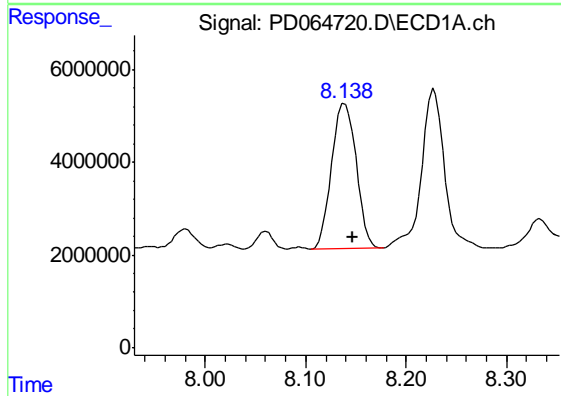
R.T.: 8.228 min
 Delta R.T.: -0.051 min
 Response: 45648045
 Conc: 32.38 ng/ml

Instrument :
 ECD_D
 ClientSampleId :
 C00A9



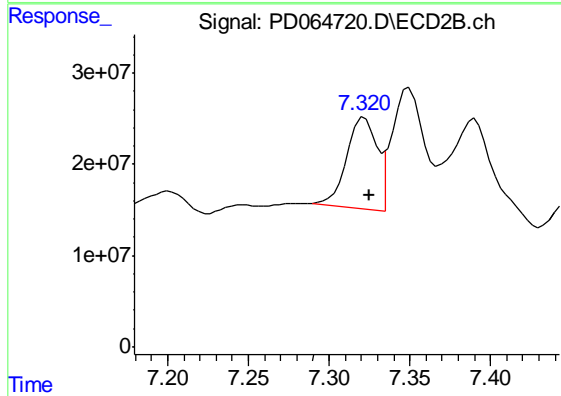
#9 Endosulfan I

R.T.: 7.466 min
 Delta R.T.: 0.017 min
 Response: 85595998
 Conc: 11.13 ng/ml



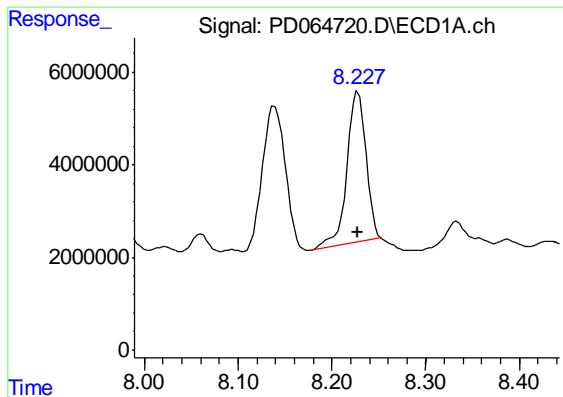
#10 trans-Chlordane

R.T.: 8.139 min
 Delta R.T.: -0.007 min
 Response: 53343156
 Conc: 33.29 ng/ml



#10 trans-Chlordane

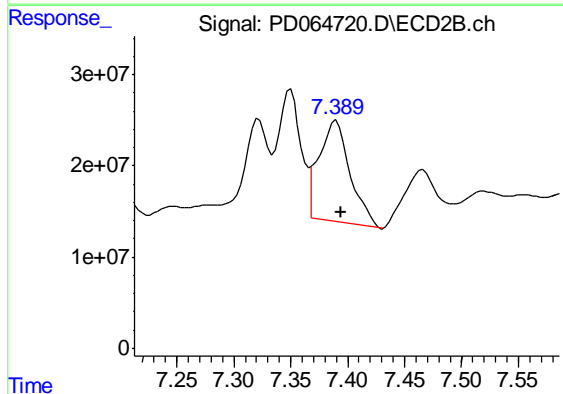
R.T.: 7.322 min
 Delta R.T.: -0.003 min
 Response: 129750404
 Conc: 14.31 ng/ml



#11 cis-Chlordane

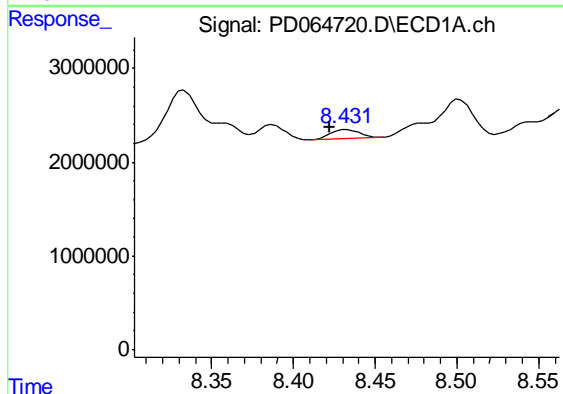
R.T.: 8.228 min
 Delta R.T.: 0.000 min
 Response: 45648045
 Conc: 29.30 ng/ml

Instrument :
 ECD_D
 ClientSampleId :
 C00A9



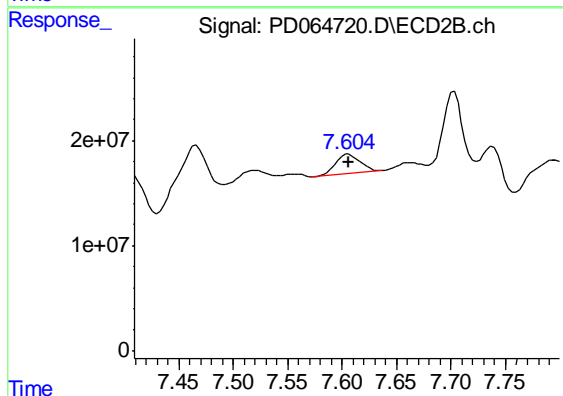
#11 cis-Chlordane

R.T.: 7.390 min
 Delta R.T.: -0.004 min
 Response: 209132498
 Conc: 23.51 ng/ml



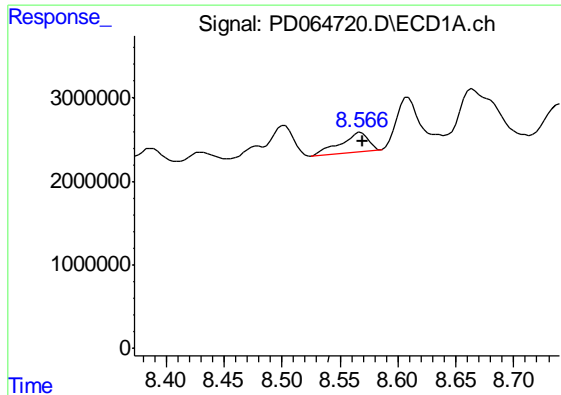
#12 4,4'-DDE

R.T.: 8.432 min
 Delta R.T.: 0.010 min
 Response: 1217530
 Conc: 0.84 ng/ml



#12 4,4'-DDE

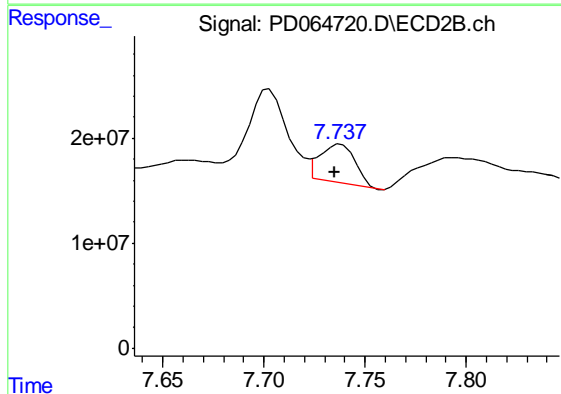
R.T.: 7.605 min
 Delta R.T.: 0.000 min
 Response: 27874249
 Conc: 3.69 ng/ml



#13 Dieldrin

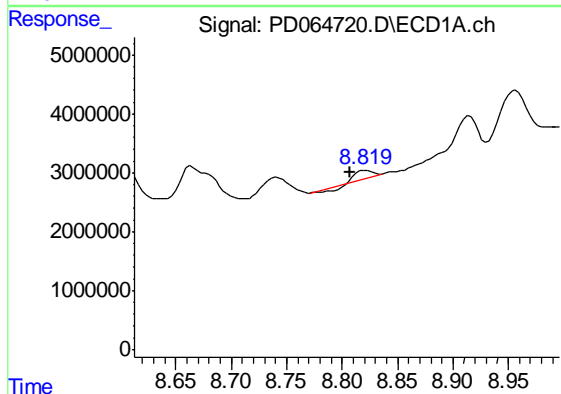
R.T.: 8.568 min
 Delta R.T.: -0.002 min
 Response: 3945522
 Conc: 2.65 ng/ml

Instrument :
 ECD_D
 ClientSampled :
 C00A9



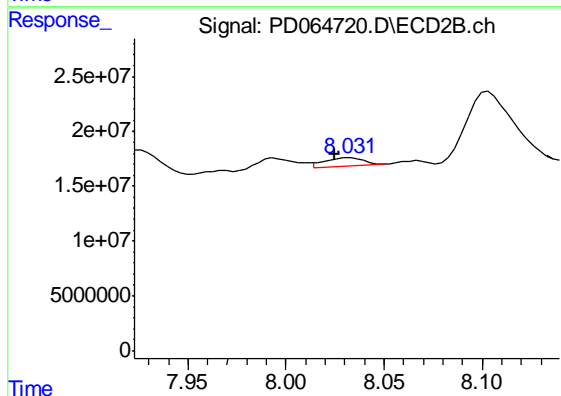
#13 Dieldrin

R.T.: 7.738 min
 Delta R.T.: 0.003 min
 Response: 45844037
 Conc: 5.71 ng/ml



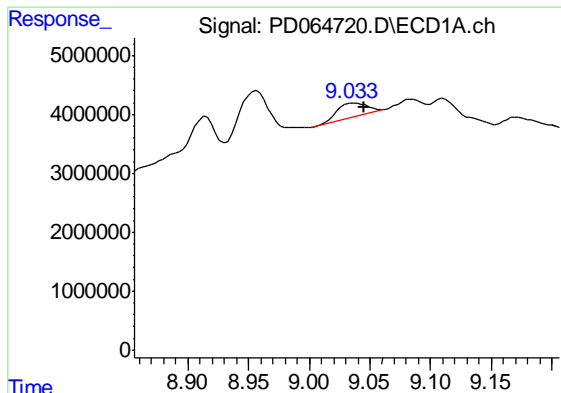
#14 Endrin

R.T.: 8.822 min
 Delta R.T.: 0.014 min
 Response: 682033
 Conc: 0.53 ng/ml



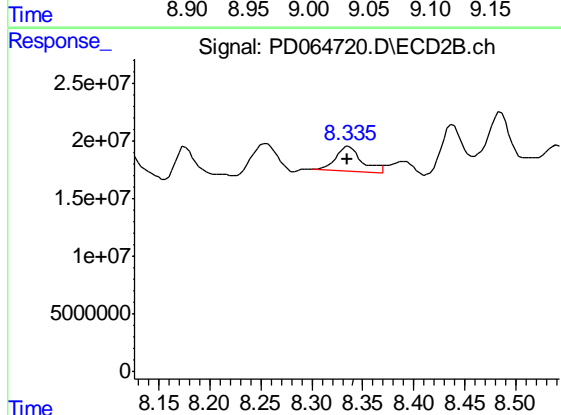
#14 Endrin

R.T.: 8.033 min
 Delta R.T.: 0.008 min
 Response: 10423130
 Conc: 1.81 ng/ml

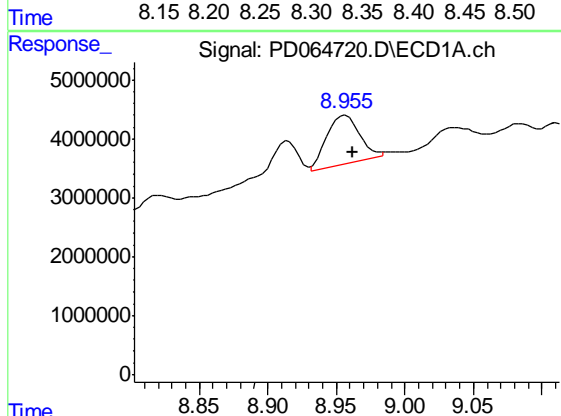


#15 Endosulfan II
 R.T.: 9.036 min
 Delta R.T.: -0.009 min
 Response: 3936666
 Conc: 3.03 ng/ml

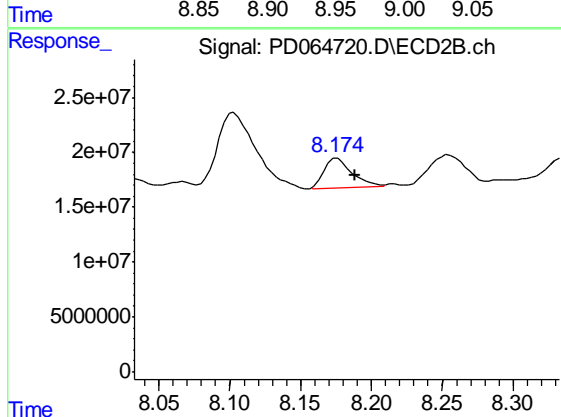
Instrument :
 ECD_D
 ClientSampled :
 C00A9



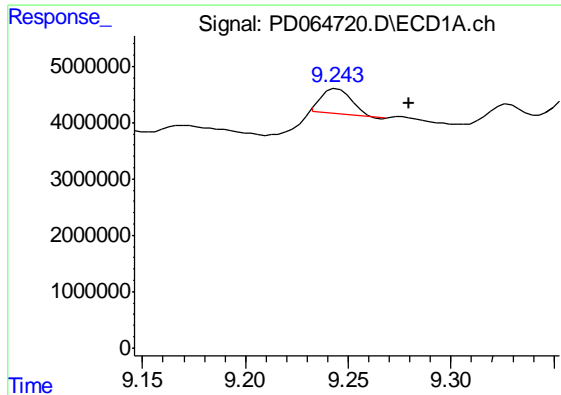
#15 Endosulfan II
 R.T.: 8.336 min
 Delta R.T.: 0.002 min
 Response: 3870708
 Conc: 6.70 ng/ml



#16 4,4'-DDD
 R.T.: 8.957 min
 Delta R.T.: -0.005 min
 Response: 13917464
 Conc: 11.34 ng/ml



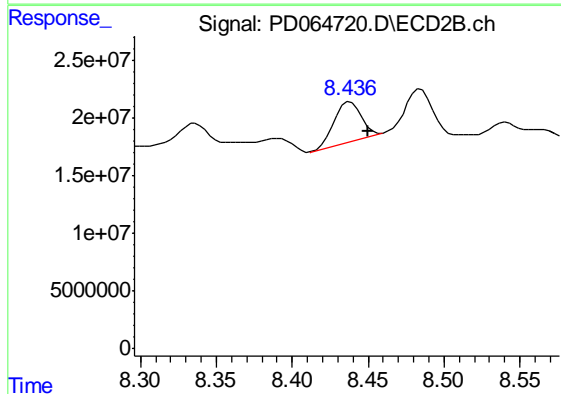
#16 4,4'-DDD
 R.T.: 8.176 min
 Delta R.T.: -0.013 min
 Response: 36593990
 Conc: 6.35 ng/ml



#17 4,4'-DDT

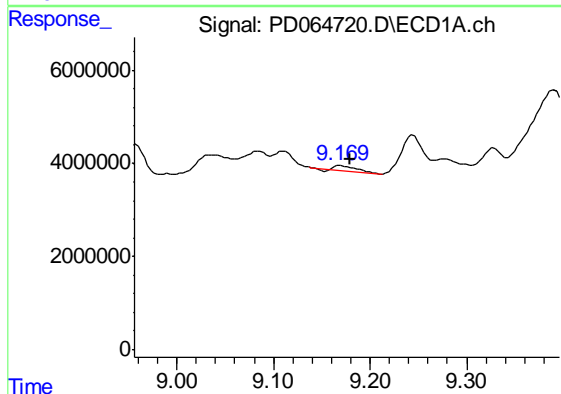
R.T.: 9.245 min
 Delta R.T.: -0.035 min
 Response: 4613831
 Conc: 3.53 ng/ml

Instrument :
 ECD_D
 ClientSampled :
 C00A9



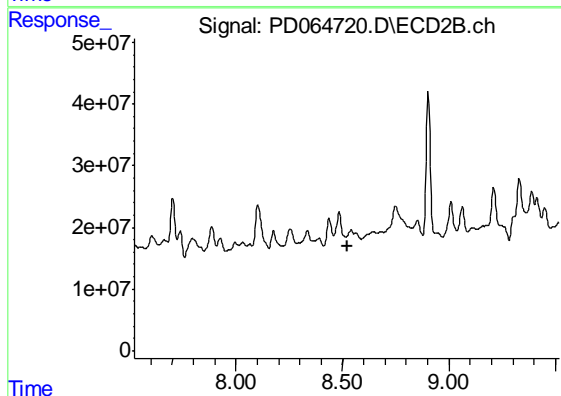
#17 4,4'-DDT

R.T.: 8.438 min
 Delta R.T.: -0.012 min
 Response: 41971996
 Conc: 7.62 ng/ml



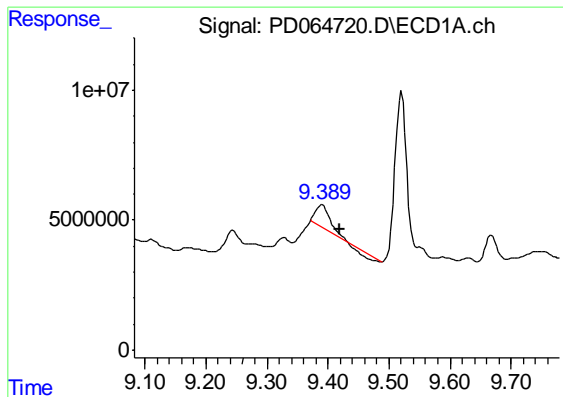
#18 Endrin aldehyde

R.T.: 9.170 min
 Delta R.T.: -0.009 min
 Response: 1272661
 Conc: 1.12 ng/ml



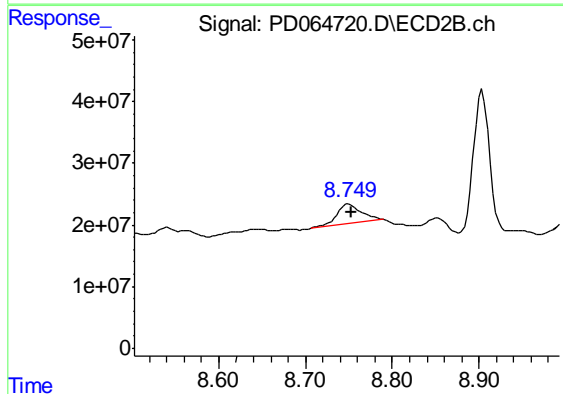
#18 Endrin aldehyde

R.T.: 8.541 min
 Delta R.T.: 0.018 min
 Response: -3659974
 Conc: N.D.

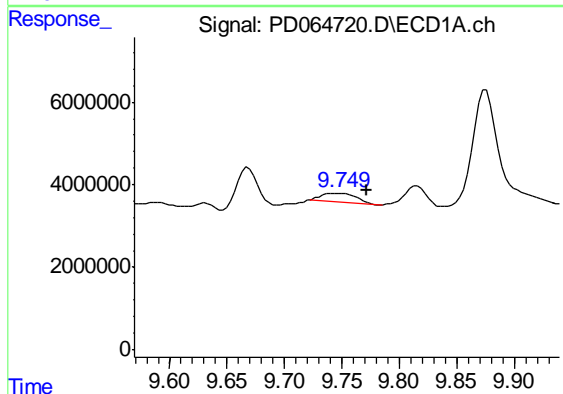


#19 Endosulfan Sulfate
 R.T.: 9.391 min
 Delta R.T.: -0.028 min
 Response: 10808330
 Conc: 7.84 ng/ml

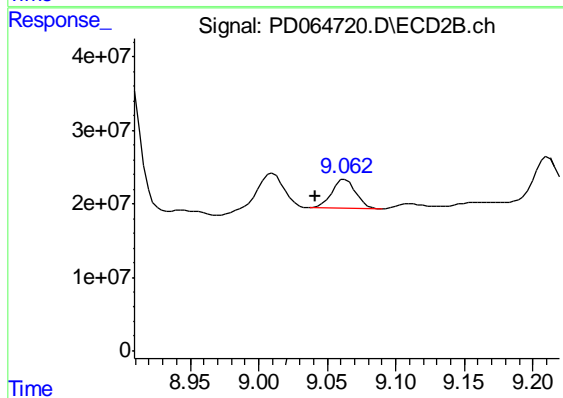
Instrument :
 ECD_D
 ClientSampled :
 C00A9



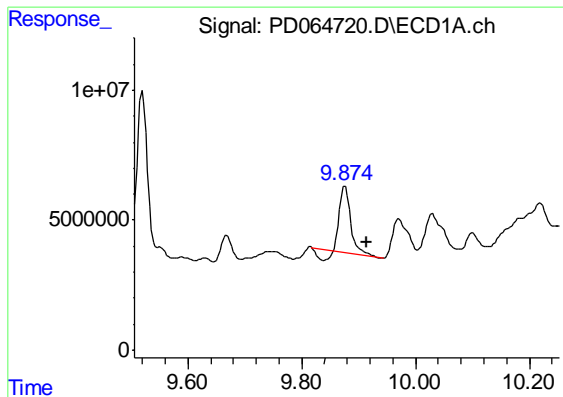
#19 Endosulfan Sulfate
 R.T.: 8.750 min
 Delta R.T.: -0.002 min
 Response: 65316595
 Conc: 12.12 ng/ml



#20 Methoxychlor
 R.T.: 9.750 min
 Delta R.T.: -0.022 min
 Response: 4559456
 Conc: 6.37 ng/ml

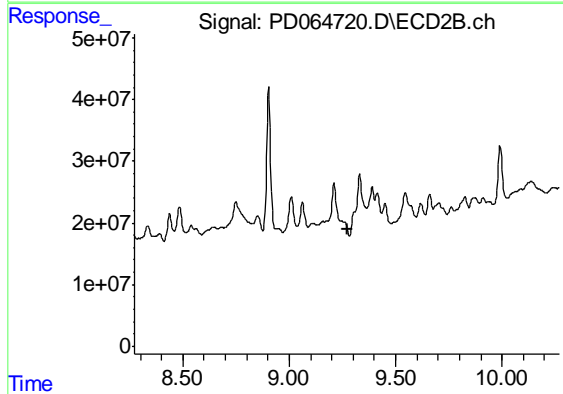


#20 Methoxychlor
 R.T.: 9.063 min
 Delta R.T.: 0.021 min
 Response: 47595419
 Conc: 18.59 ng/ml

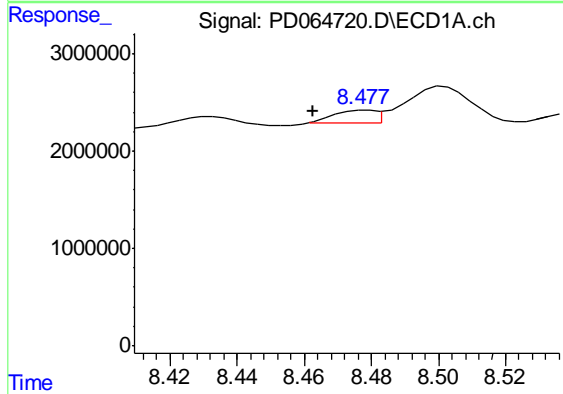


#21 Endrin ketone
 R.T.: 9.876 min
 Delta R.T.: -0.038 min
 Response: 31934523
 Conc: 21.11 ng/ml

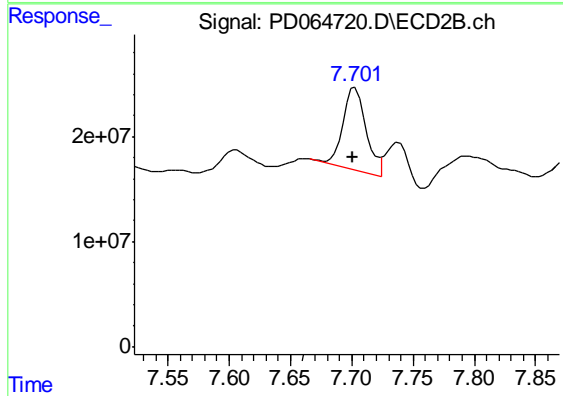
Instrument :
 ECD_D
 ClientSampled :
 C00A9



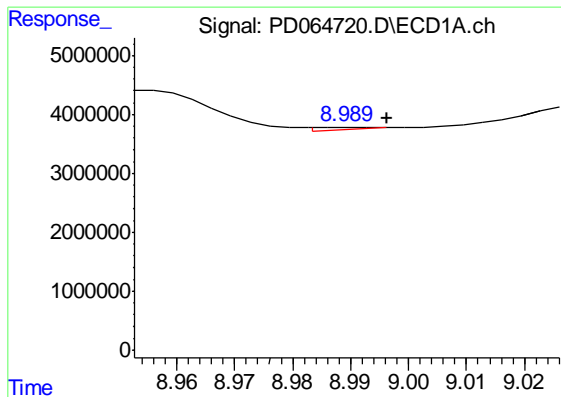
#21 Endrin ketone
 R.T.: 9.306 min
 Delta R.T.: 0.035 min
 Response: -27523273
 Conc: N.D.



#22 Toxaphene-1
 R.T.: 8.478 min
 Delta R.T.: 0.016 min
 Response: 1117676
 Conc: 119.78 ng/ml

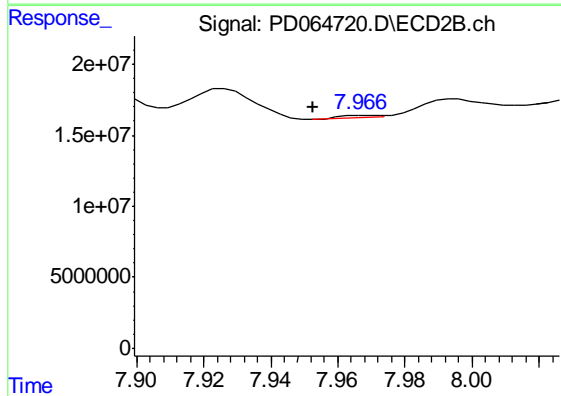


#22 Toxaphene-1
 R.T.: 7.703 min
 Delta R.T.: 0.002 min
 Response: 103852303
 Conc: 2760.16 ng/ml

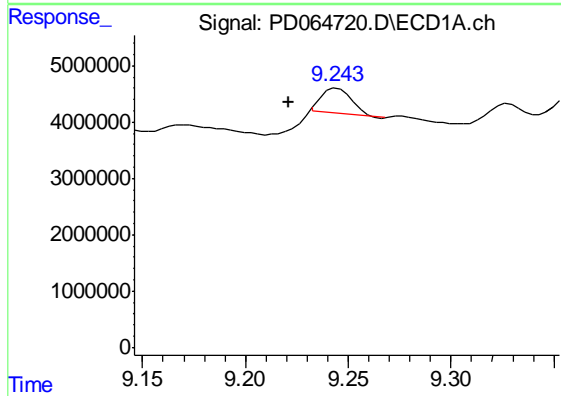


#23 Toxaphene-2
 R.T.: 8.990 min
 Delta R.T.: -0.006 min
 Response: 1158008
 Conc: 66.43 ng/ml

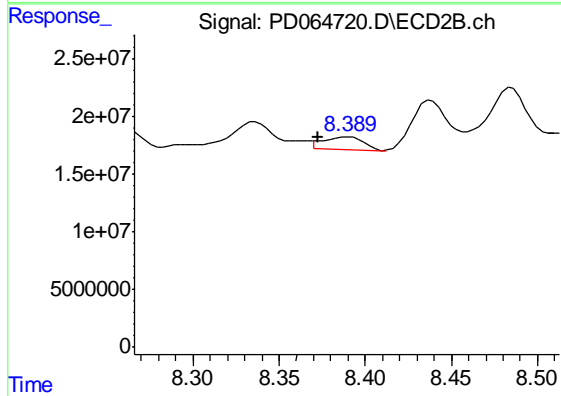
Instrument :
 ECD_D
 ClientSampleId :
 C00A9



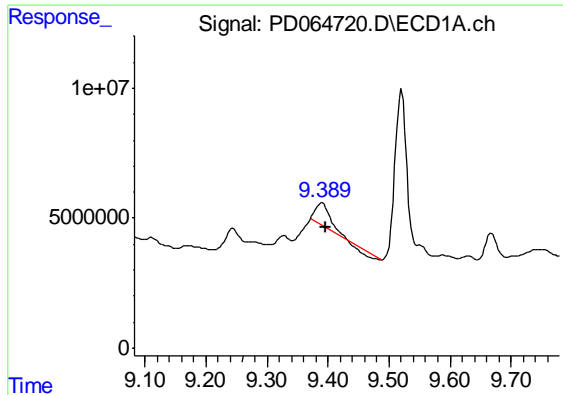
#23 Toxaphene-2
 R.T.: 7.969 min
 Delta R.T.: 0.016 min
 Response: 1129479
 Conc: 13.37 ng/ml



#24 Toxaphene-3
 R.T.: 9.245 min
 Delta R.T.: 0.023 min
 Response: 4613831
 Conc: 380.63 ng/ml

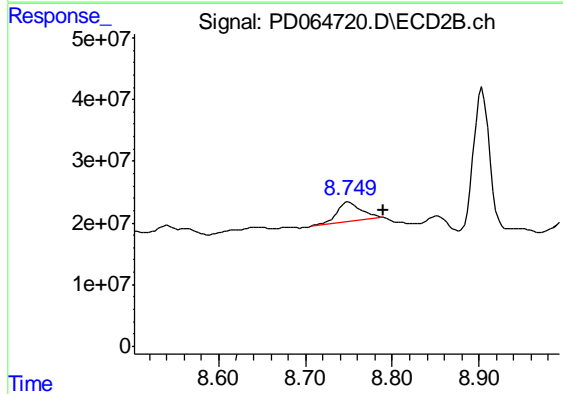


#24 Toxaphene-3
 R.T.: 8.390 min
 Delta R.T.: 0.017 min
 Response: 17514346
 Conc: 152.86 ng/ml

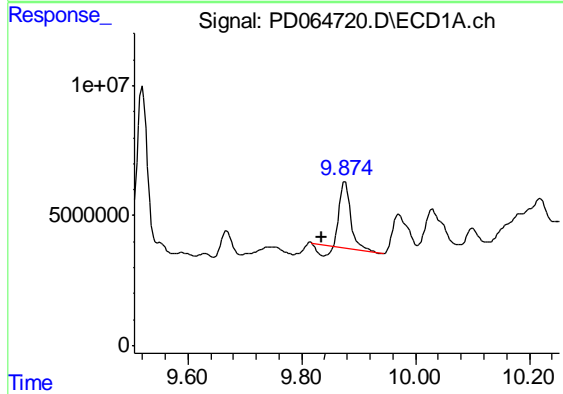


#25 Toxaphene-4
 R.T.: 9.391 min
 Delta R.T.: -0.006 min
 Response: 10808330
 Conc: 449.92 ng/ml

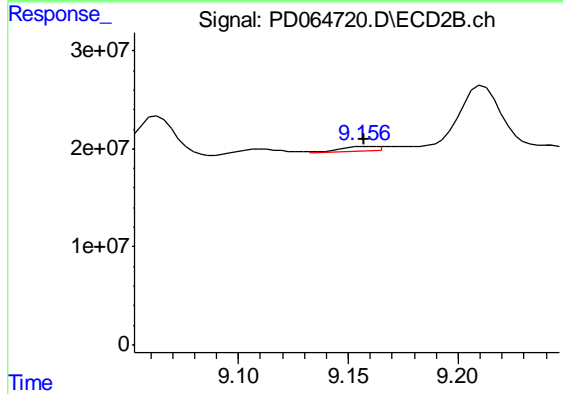
Instrument :
 ECD_D
 ClientSampled :
 C00A9



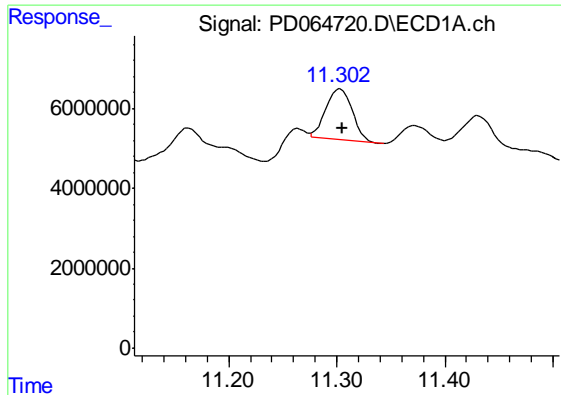
#25 Toxaphene-4
 R.T.: 8.750 min
 Delta R.T.: -0.040 min
 Response: 65316595
 Conc: 1159.50 ng/ml



#26 Toxaphene-5
 R.T.: 9.876 min
 Delta R.T.: 0.040 min
 Response: 31934523
 Conc: 1729.66 ng/ml



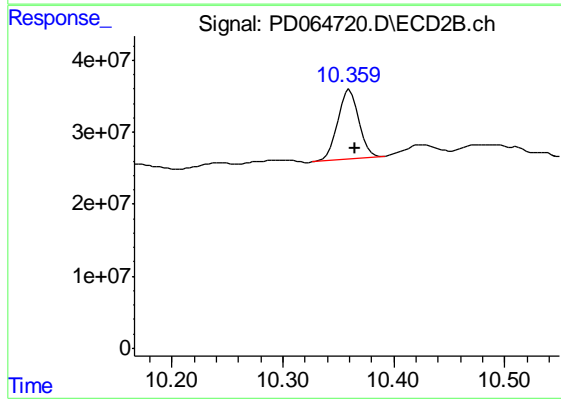
#26 Toxaphene-5
 R.T.: 9.159 min
 Delta R.T.: 0.001 min
 Response: 4647753
 Conc: 36.97 ng/ml



#27 Decachlorobiphenyl

R.T.: 11.303 min
Delta R.T.: -0.002 min
Response: 21892284
Conc: 16.63 ng/ml

Instrument :
ECD_D
ClientSampleId :
C00A9



#27 Decachlorobiphenyl

R.T.: 10.360 min
Delta R.T.: -0.005 min
Response: 128712412
Conc: 21.64 ng/ml