

Data Path : Z:\pestpcbsrv\HPCHEM1\ECD\_D\Data\PD080421\  
 Data File : PD064743.D  
 Signal(s) : Signal #1: ECD1A.ch Signal #2: ECD2B.ch  
 Acq On : 04 Aug 2021 20:20  
 Operator : AR\AJ  
 Sample : M3244-06MS  
 Misc :  
 ALS Vial : 35 Sample Multiplier: 1

Instrument :  
 ECD\_D  
 ClientSampled :  
 JCE05MS

Manual Integrations  
 APPROVED

mohammad  
 8/5/2021 12:38:04 PM

Integration File signal 1: autoint1.e  
 Integration File signal 2: autoint2.e  
 Quant Time: Aug 05 06:44:17 2021  
 Quant Method : Z:\pestpcbsrv\HPCHEM1\ECD\_D\Method\PD072721CLP.M  
 Quant Title : GC Extractables  
 QLast Update : Wed Jul 28 07:07:14 2021  
 Response via : Initial Calibration  
 Integrator: ChemStation

Volume Inj. : 1 µl  
 Signal #1 Phase : ZB-MR2 Signal #2 Phase: ZB-MR1  
 Signal #1 Info : 30M x 0.32mm x0.2 Signal #2 Info : 30M x 0.32mm x 0.50µm

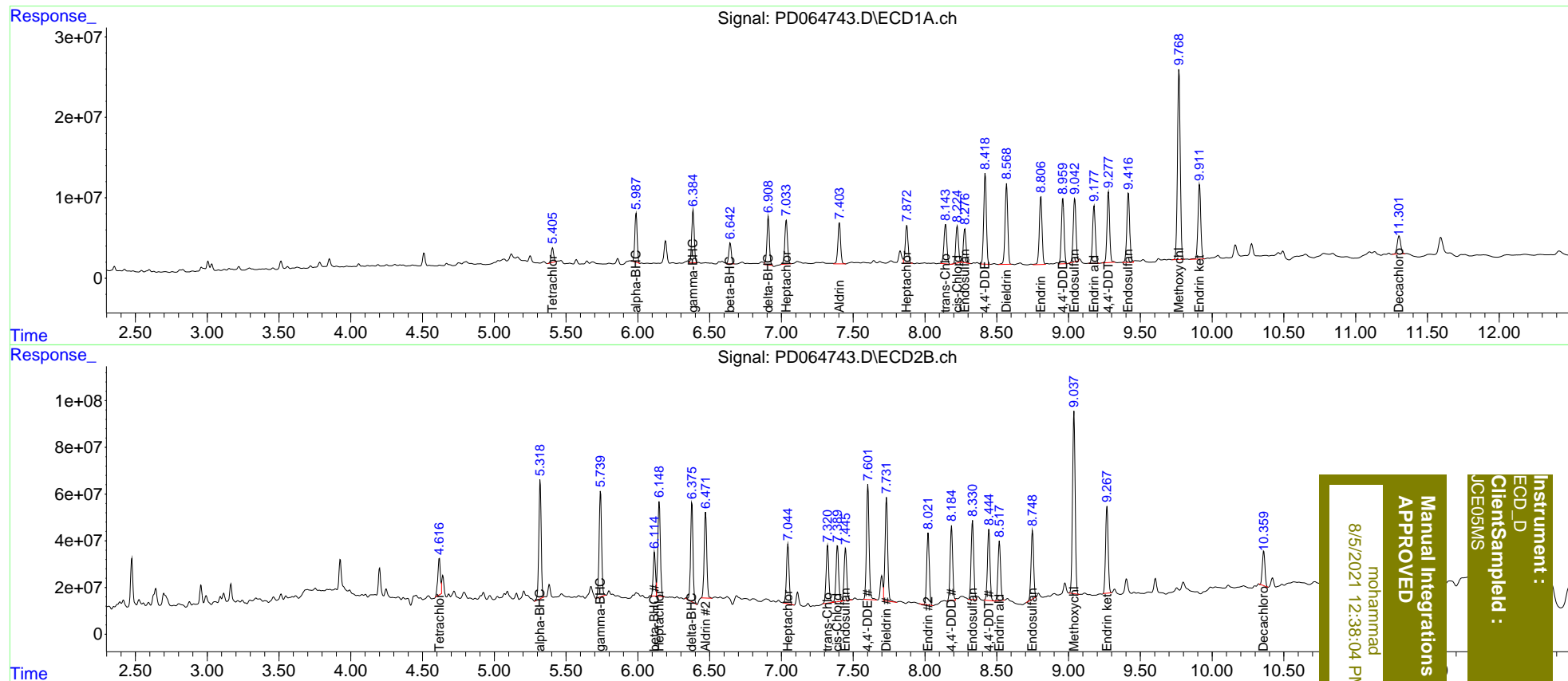
Compound	RT#1	RT#2	Resp#1	Resp#2	ng/ml	ng/ml
System Monitoring Compounds						
1) SA Tetrachlo...	5.406	4.617	22104362	192.8E6	18.530	21.104
27) SA Decachlor...	11.303	10.360	37384979	188.1E6	28.400	31.638
Target Compounds						
2) A alpha-BHC	5.988	5.320	69521333	574.5E6	42.675	46.610
3) MA gamma-BHC...	6.385	5.740	78180655	544.8E6	49.849	47.774
4) MA Heptachlor	7.034	6.148	71010379	505.7E6	42.253	44.600m
5) MB Aldrin	7.404	6.472	67469824	457.7E6	42.833	43.510
6) B beta-BHC	6.643	6.114	31659706	202.2E6	40.581	33.327m
7) B delta-BHC	6.909	6.377	70875552	496.1E6	40.729	45.667
8) B Heptachlo...	7.874	7.046	63815999	319.6E6	37.170	34.521
9) A Endosulfan I	8.278	7.447	53370913	289.5E6	37.861	37.643
10) B trans-Chl...	8.144	7.322	68169461	315.8E6	42.540	34.817
11) B cis-Chlor...	8.225	7.390	58524086	302.3E6	37.561	33.978
12) B 4,4'-DDE	8.420	7.603	145.0E6	618.4E6	100.602	81.955
13) MA Dieldrin	8.569	7.732	130.2E6	577.0E6	87.310	71.837
14) MA Endrin	8.807	8.022	113.0E6	379.3E6	88.290	66.034 #
15) B Endosulfa...	9.043	8.332	104.6E6	422.7E6	80.536	73.232
16) A 4,4'-DDD	8.961	8.186	105.8E6	392.3E6	86.186	68.110
17) MA 4,4'-DDT	9.278	8.446	111.6E6	378.0E6	85.524	68.679
18) B Endrin al...	9.178	8.519	96263308	317.4E6	84.969	64.308
19) B Endosulfa...	9.417	8.749	120.3E6	365.8E6	87.276	67.873
20) A Methoxychlor	9.770	9.038	316.4E6	991.4E6	442.158	387.189
21) B Endrin ke...	9.913	9.268	124.9E6	466.3E6	82.530	77.735

(f)=RT Delta > 1/2 Window (#)=Amounts differ by > 25% (m)=manual int.

Data Path : Z:\pestpcbsrv\HPCHEM1\ECD\_D\Data\PD080421\  
 Data File : PD064743.D  
 Signal(s) : Signal #1: ECD1A.ch Signal #2: ECD2B.ch  
 Acq On : 04 Aug 2021 20:20  
 Operator : AR\AJ  
 Sample : M3244-06MS  
 Misc :  
 ALS Vial : 35 Sample Multiplier: 1

Integration File signal 1: autoint1.e  
 Integration File signal 2: autoint2.e  
 Quant Time: Aug 05 06:44:17 2021  
 Quant Method : Z:\pestpcbsrv\HPCHEM1\ECD\_D\Method\PD072721CLP.M  
 Quant Title : GC Extractables  
 QLast Update : Wed Jul 28 07:07:14 2021  
 Response via : Initial Calibration  
 Integrator: ChemStation

Volume Inj. : 1 µl  
 Signal #1 Phase : ZB-MR2 Signal #2 Phase: ZB-MR1  
 Signal #1 Info : 30M x 0.32mm x0.2 Signal #2 Info : 30M x 0.32mm x 0.50µm



Instrument :  
 ECD\_D  
 ClientSampleId :  
 JCE05MS

Manual Integrations  
 APPROVED  
 mohammad  
 8/5/2021 12:38:04 PM