

Data Path : Z:\pestpcbsrv\HPCHEM1\ECD_D\Data\PD080422\
 Data File : PD071324.D
 Signal(s) : Signal #1: ECD1A.ch Signal #2: ECD2B.ch
 Acq On : 04 Aug 2022 13:53
 Operator : AR\AJ
 Sample : N3980-02
 Misc : PEST LOQ 5 PPB
 ALS Vial : 10 Sample Multiplier: 1

Instrument :
 ECD_D
 ClientSampleId :
 LOQ-SOIL-02-QT3-2022

Integration File signal 1: autoint1.e
 Integration File signal 2: autoint2.e
 Quant Time: Aug 05 03:20:20 2022
 Quant Method : Z:\pestpcbsrv\HPCHEM1\ECD_D\Method\PD072622.M
 Quant Title : GC Extractables
 QLast Update : Tue Jul 26 03:39:07 2022
 Response via : Initial Calibration
 Integrator: ChemStation

Volume Inj. : 2 µl
 Signal #1 Phase : ZB-MR2 Signal #2 Phase: ZB-MR1
 Signal #1 Info : 30M x 0.32mm x0.2 Signal #2 Info : 30M x 0.32mm x 0.50µm

Compound	RT#1	RT#2	Resp#1	Resp#2	ng/ml	ng/ml

System Monitoring Compounds						
1) SA Tetrachlo...	2.815	3.574	45080644	512.6E6	15.896	18.211
28) SA Decachlor...	8.016	9.104	48554468	199.5E6	17.507	19.272
Target Compounds						
2) A alpha-BHC	3.324	4.039	16848433	186.0E6	4.018	5.011
3) MA gamma-BHC...	3.657	4.376	15640170	154.4E6	3.910m	5.157 #
4) MA Heptachlor	4.006	4.954	16390251	125.1E6	3.864	5.917 #
5) MB Aldrin	4.290	5.296	16000104	99539505	3.923	5.636 #
6) B beta-BHC	3.957	4.582	7221473	65482871	4.227	5.528 #
7) B delta-BHC	4.191	4.830	14540027	120.2E6	3.705	6.038 #
8) B Heptachlo...	4.797	5.726	15435968	86332311	4.215	6.606m#
9) A Endosulfan I	5.172	6.116	14713716	76943843	4.296	5.596 #
10) B gamma-Chl...	5.051	5.982	15836561	82245283	4.168	5.600 #
11) B alpha-Chl...	5.116	6.060	15820523	81918652	4.258	5.649 #
12) B 4,4'-DDE	5.307	6.232	13290084	77994663	3.883	5.456 #
13) MA Dieldrin	5.439	6.393	14733822	81513132	4.068	5.547 #
14) MA Endrin	5.717	6.626	12875373	62782651	4.067	5.019
15) B Endosulfa...	6.012	6.851	12832135	66872473	4.270	5.393 #
16) A 4,4'-DDD	5.865	6.756	12373215	66930029	4.340	5.627 #
17) MA 4,4'-DDT	6.119	7.068	10888988	64440219	3.689	4.941 #
18) B Endrin al...	6.193	6.982	9962567	52596413	4.519	5.429
19) B Endosulfa...	6.418	7.215	13224525	64911572	4.599	5.443
20) A Methoxychlor	6.700	7.544	7061932	36119798	4.281	5.240
21) B Endrin ke...	6.929	7.707	15549313	76466100	4.773	5.696
22) Mirex	7.116	8.169	12898160	48688924	5.268	5.660

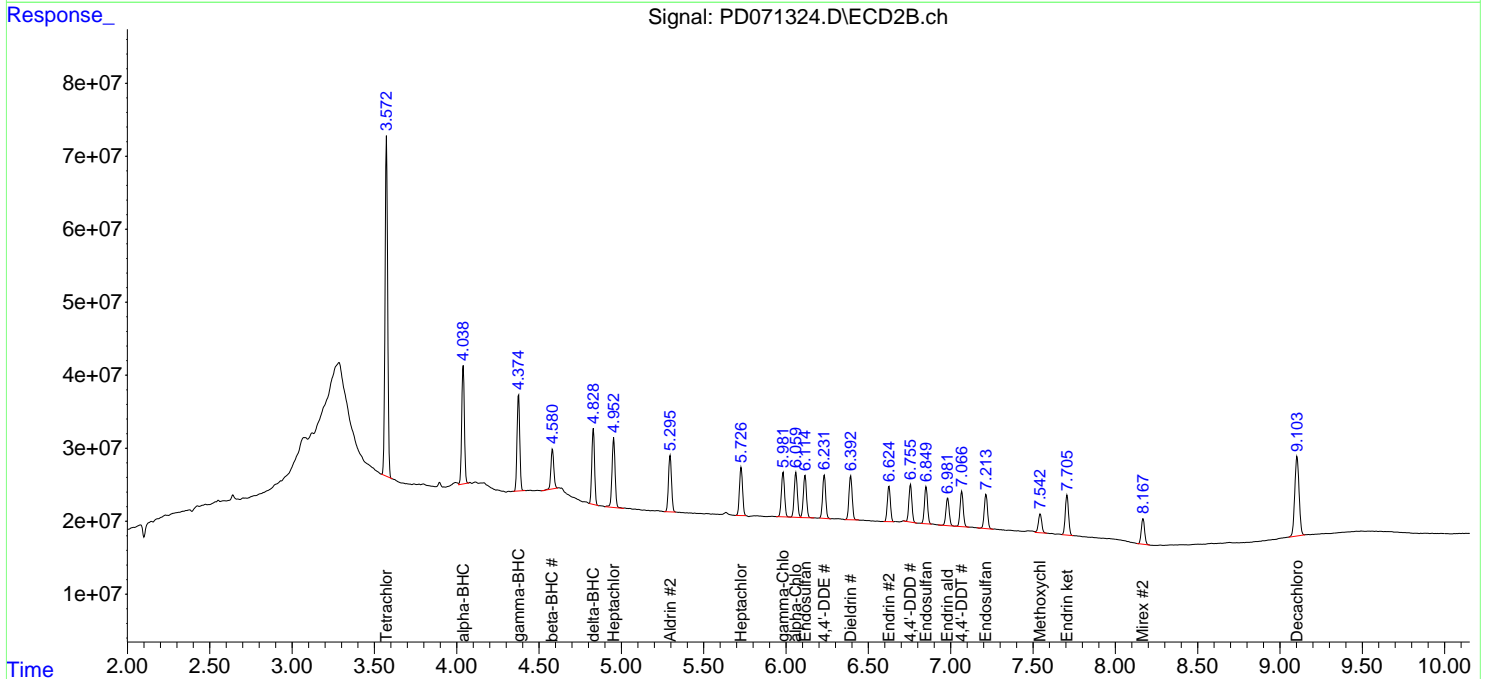
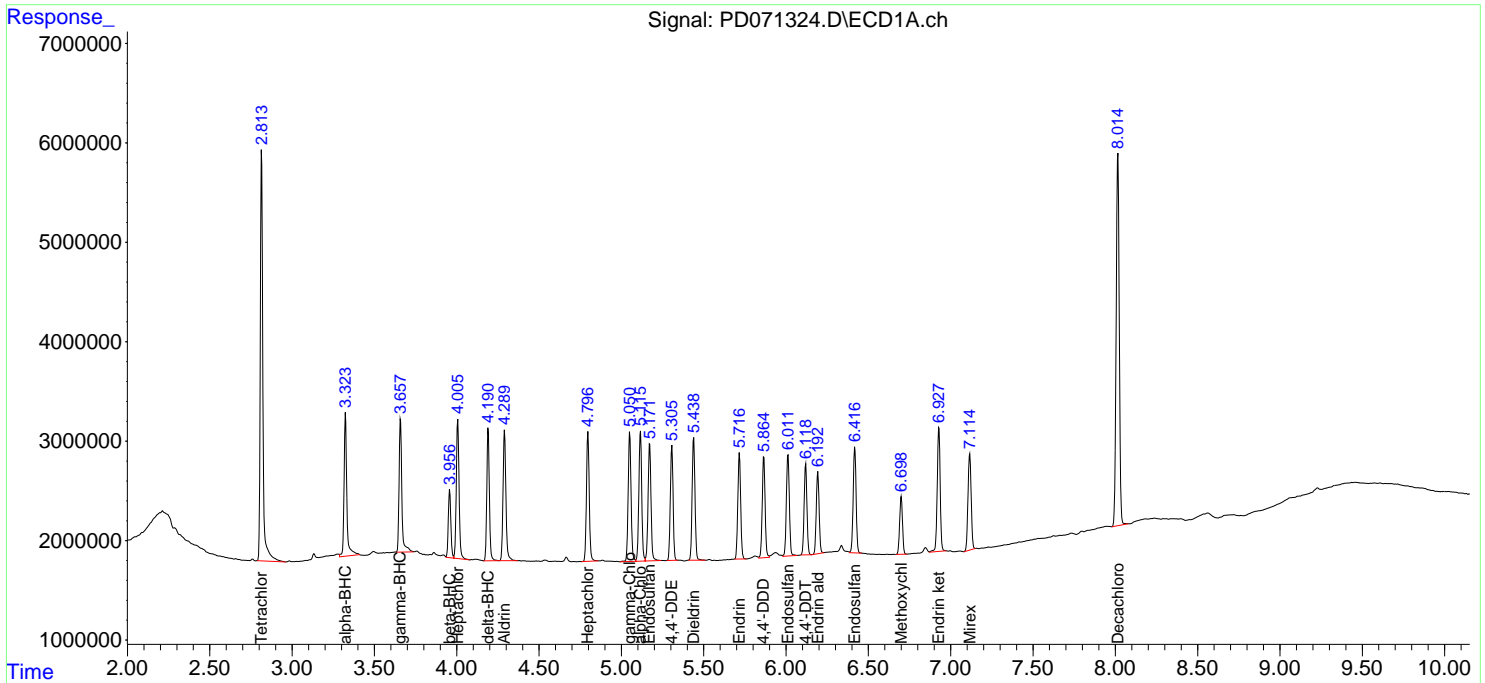
(f)=RT Delta > 1/2 Window (#)=Amounts differ by > 25% (m)=manual int.

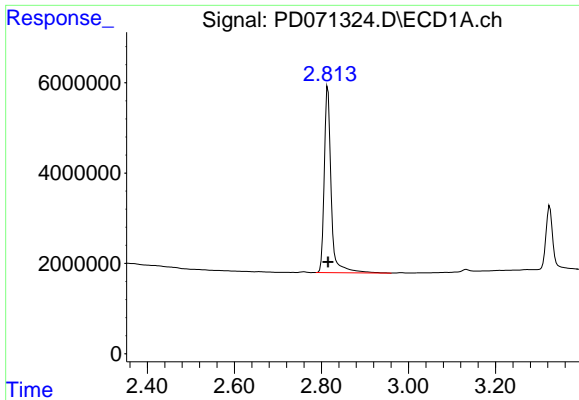
Data Path : Z:\pestpcbsrv\HPCHEM1\ECD_D\Data\PD080422\
 Data File : PD071324.D
 Signal(s) : Signal #1: ECD1A.ch Signal #2: ECD2B.ch
 Acq On : 04 Aug 2022 13:53
 Operator : AR\AJ
 Sample : N3980-02
 Misc : PEST LOQ 5 PPB
 ALS Vial : 10 Sample Multiplier: 1

Instrument :
 ECD_D
 ClientSampleId :
 LOQ-SOIL-02-QT3-2022

Integration File signal 1: autoint1.e
 Integration File signal 2: autoint2.e
 Quant Time: Aug 05 03:20:20 2022
 Quant Method : Z:\pestpcbsrv\HPCHEM1\ECD_D\Method\PD072622.M
 Quant Title : GC Extractables
 QLast Update : Tue Jul 26 03:39:07 2022
 Response via : Initial Calibration
 Integrator: ChemStation

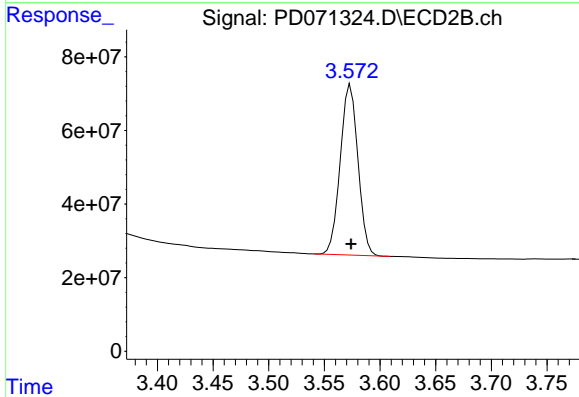
Volume Inj. : 2 µl
 Signal #1 Phase : ZB-MR2 Signal #2 Phase: ZB-MR1
 Signal #1 Info : 30M x 0.32mm x0.2 Signal #2 Info : 30M x 0.32mm x 0.50µm



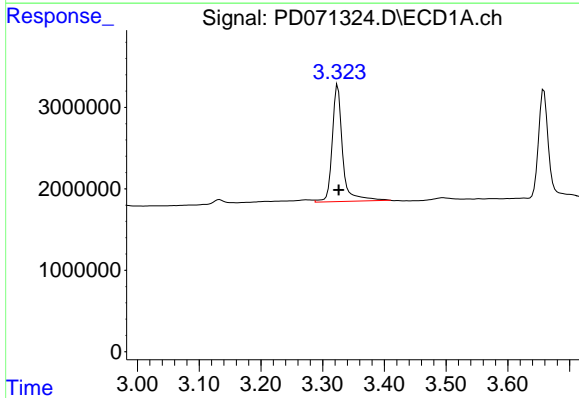


#1 Tetrachloro-m-xylene
 R.T.: 2.815 min
 Delta R.T.: 0.000 min
 Response: 45080644
 Conc: 15.90 ng/ml

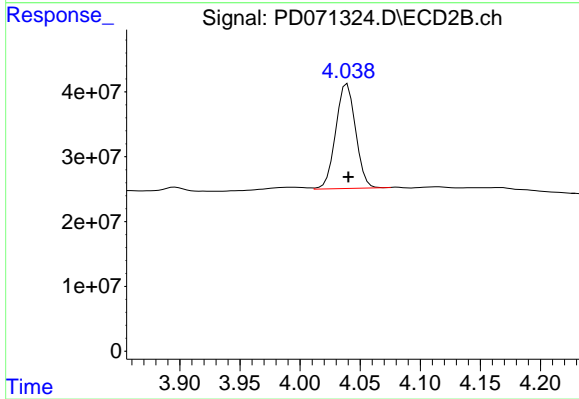
Instrument :
 ECD_D
 ClientSampleId :
 LOQ-SOIL-02-QT3-2022



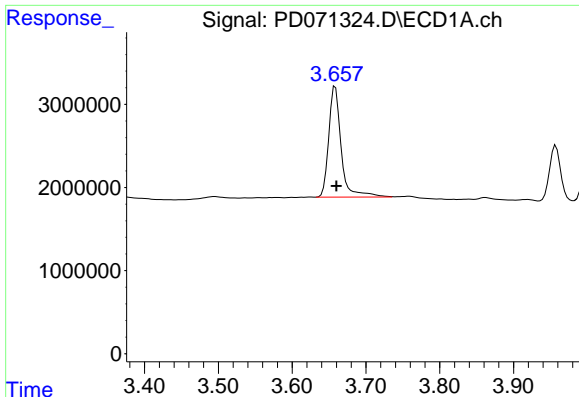
#1 Tetrachloro-m-xylene
 R.T.: 3.574 min
 Delta R.T.: 0.000 min
 Response: 512647657
 Conc: 18.21 ng/ml



#2 alpha-BHC
 R.T.: 3.324 min
 Delta R.T.: -0.002 min
 Response: 16848433
 Conc: 4.02 ng/ml



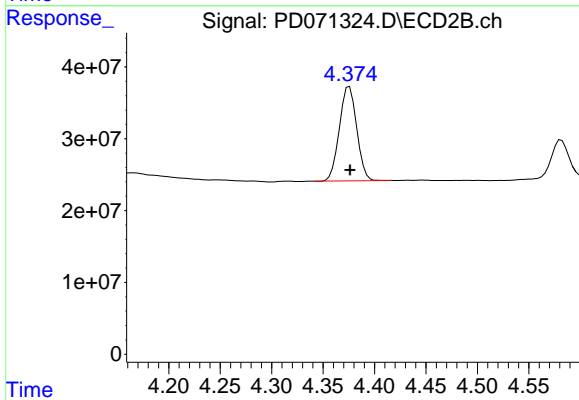
#2 alpha-BHC
 R.T.: 4.039 min
 Delta R.T.: 0.000 min
 Response: 186039792
 Conc: 5.01 ng/ml



#3 gamma-BHC (Lindane)

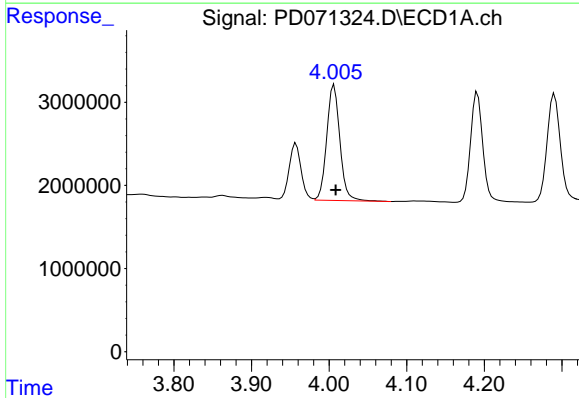
R.T.: 3.657 min
 Delta R.T.: -0.003 min
 Response: 15640170
 Conc: 3.91 ng/ml

Instrument :
 ECD_D
 ClientSampleId :
 LOQ-SOIL-02-QT3-2022



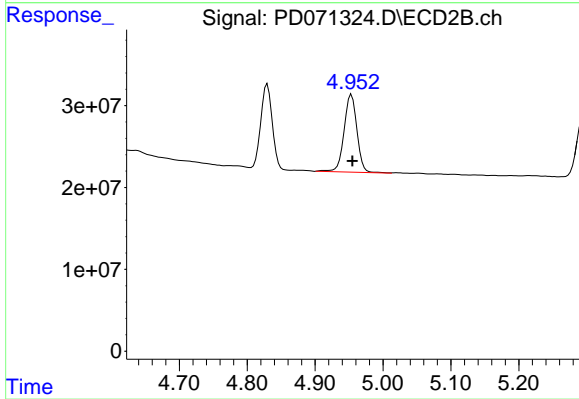
#3 gamma-BHC (Lindane)

R.T.: 4.376 min
 Delta R.T.: 0.000 min
 Response: 154420230
 Conc: 5.16 ng/ml



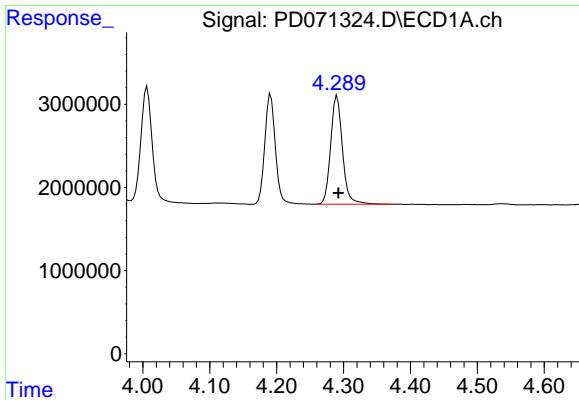
#4 Heptachlor

R.T.: 4.006 min
 Delta R.T.: -0.002 min
 Response: 16390251
 Conc: 3.86 ng/ml



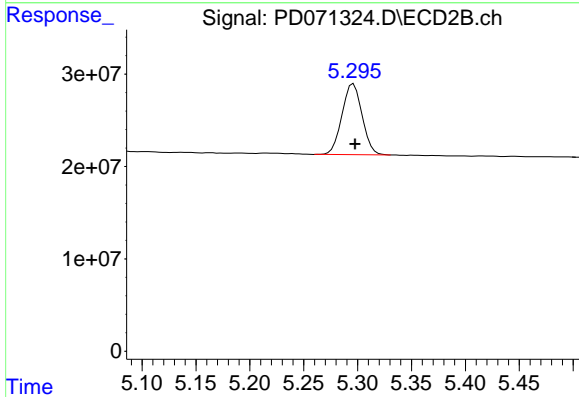
#4 Heptachlor

R.T.: 4.954 min
 Delta R.T.: -0.001 min
 Response: 125107158
 Conc: 5.92 ng/ml

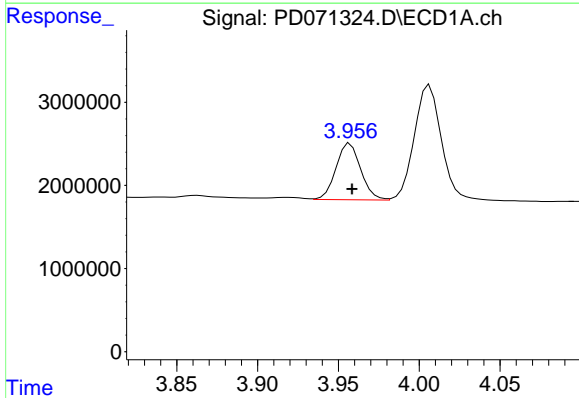


#5 Aldrin
 R.T.: 4.290 min
 Delta R.T.: -0.002 min
 Response: 16000104
 Conc: 3.92 ng/ml

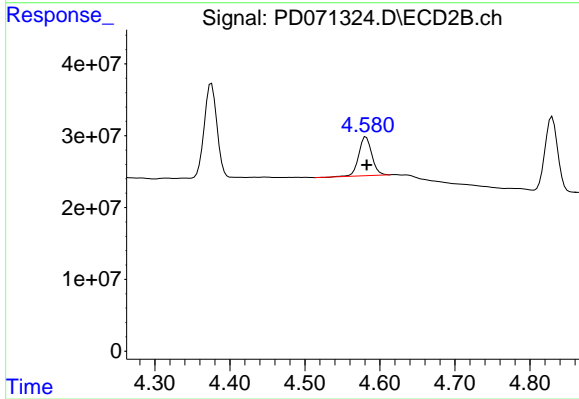
Instrument :
 ECD_D
 ClientSampleId :
 LOQ-SOIL-02-QT3-2022



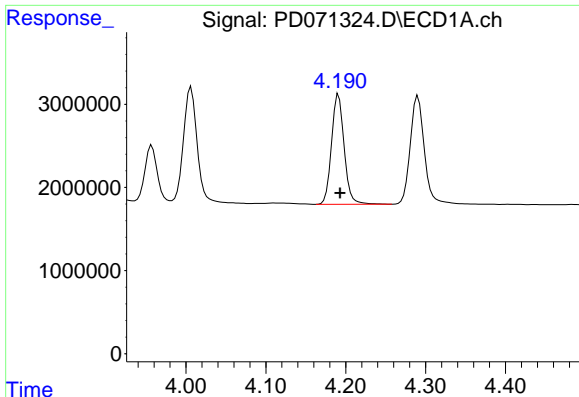
#5 Aldrin
 R.T.: 5.296 min
 Delta R.T.: -0.002 min
 Response: 99539505
 Conc: 5.64 ng/ml



#6 beta-BHC
 R.T.: 3.957 min
 Delta R.T.: -0.001 min
 Response: 7221473
 Conc: 4.23 ng/ml



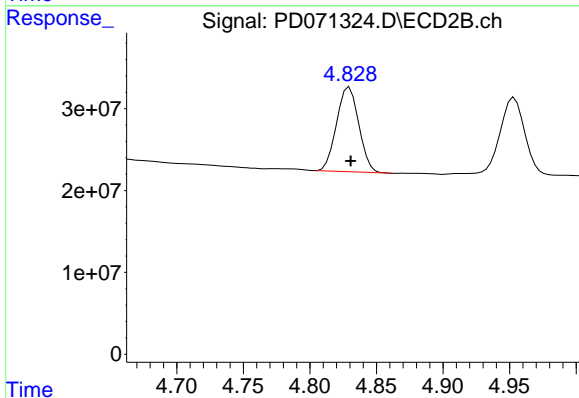
#6 beta-BHC
 R.T.: 4.582 min
 Delta R.T.: 0.000 min
 Response: 65482871
 Conc: 5.53 ng/ml



#7 delta-BHC

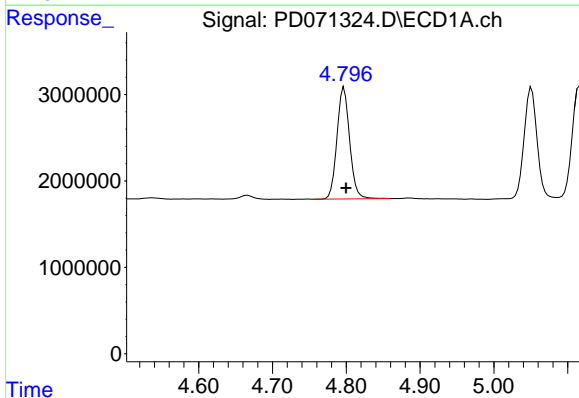
R.T.: 4.191 min
 Delta R.T.: -0.002 min
 Response: 14540027
 Conc: 3.70 ng/ml

Instrument :
 ECD_D
 ClientSampleId :
 LOQ-SOIL-02-QT3-2022



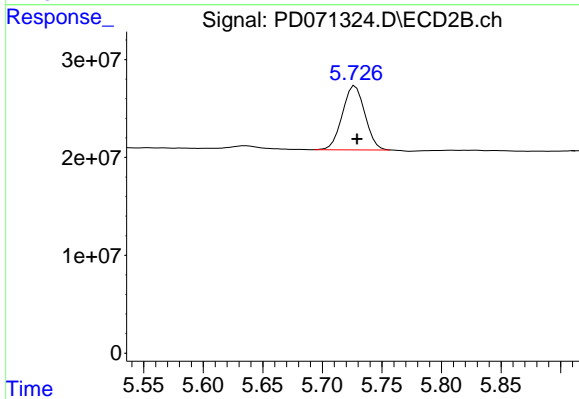
#7 delta-BHC

R.T.: 4.830 min
 Delta R.T.: -0.001 min
 Response: 120163412
 Conc: 6.04 ng/ml



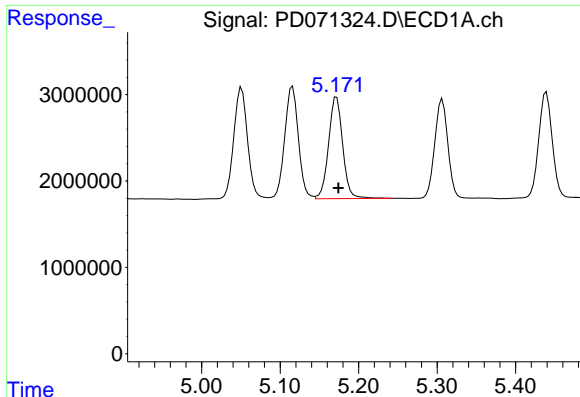
#8 Heptachlor epoxide

R.T.: 4.797 min
 Delta R.T.: -0.003 min
 Response: 15435968
 Conc: 4.22 ng/ml



#8 Heptachlor epoxide

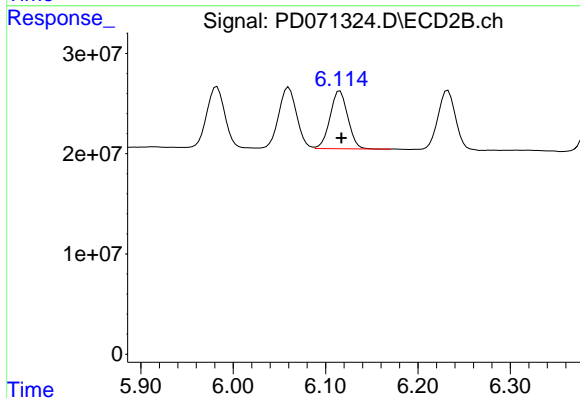
R.T.: 5.726 min
 Delta R.T.: -0.003 min
 Response: 86332311
 Conc: 6.61 ng/ml m



#9 Endosulfan I

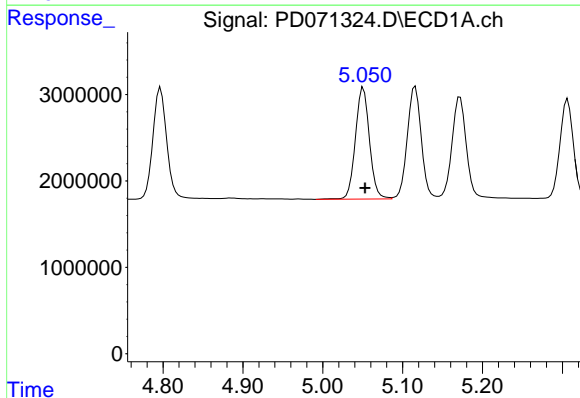
R.T.: 5.172 min
 Delta R.T.: -0.002 min
 Response: 14713716
 Conc: 4.30 ng/ml

Instrument :
 ECD_D
 ClientSampleId :
 LOQ-SOIL-02-QT3-2022



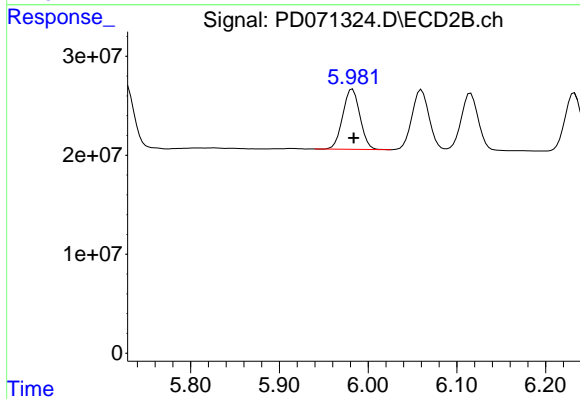
#9 Endosulfan I

R.T.: 6.116 min
 Delta R.T.: -0.002 min
 Response: 76943843
 Conc: 5.60 ng/ml



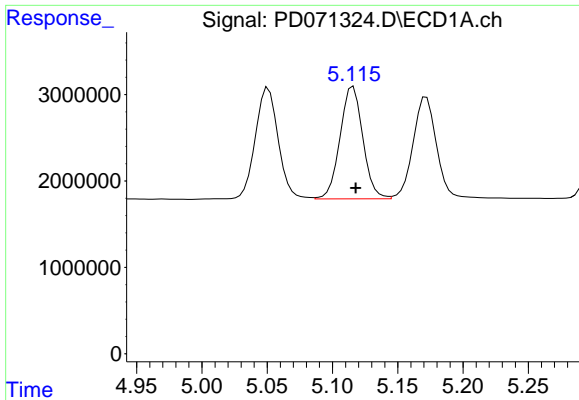
#10 gamma-Chlordane

R.T.: 5.051 min
 Delta R.T.: -0.002 min
 Response: 15836561
 Conc: 4.17 ng/ml



#10 gamma-Chlordane

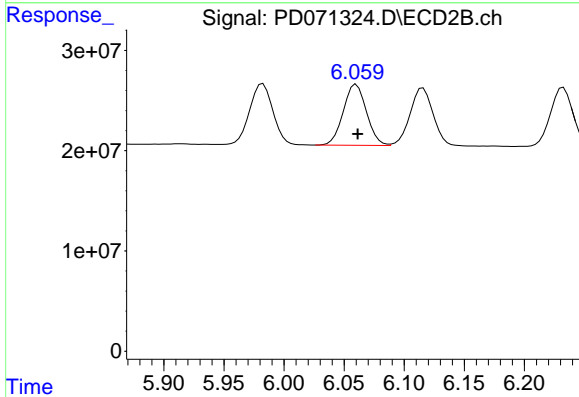
R.T.: 5.982 min
 Delta R.T.: -0.001 min
 Response: 82245283
 Conc: 5.60 ng/ml



#11 alpha-Chlordane

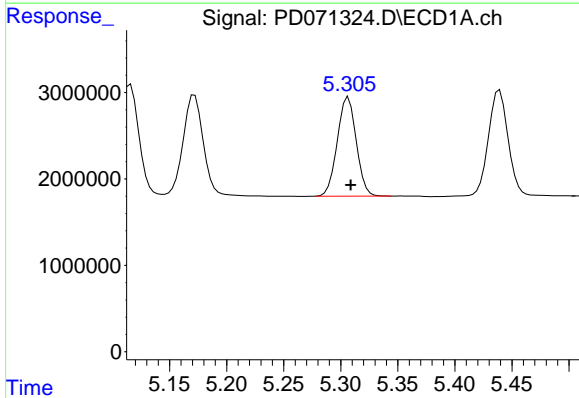
R.T.: 5.116 min
 Delta R.T.: -0.002 min
 Response: 15820523
 Conc: 4.26 ng/ml

Instrument :
 ECD_D
 ClientSampleId :
 LOQ-SOIL-02-QT3-2022



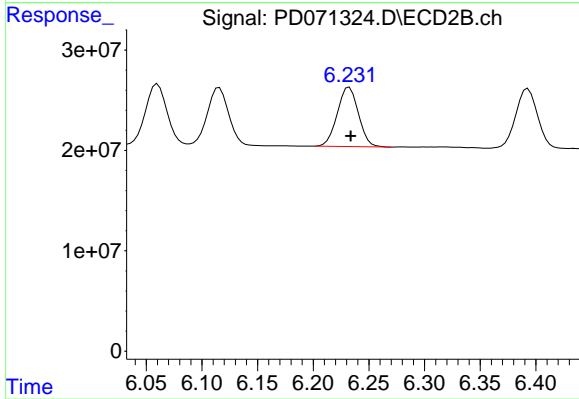
#11 alpha-Chlordane

R.T.: 6.060 min
 Delta R.T.: -0.001 min
 Response: 81918652
 Conc: 5.65 ng/ml



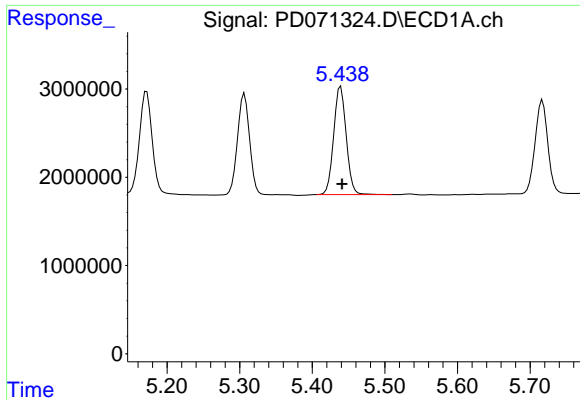
#12 4,4'-DDE

R.T.: 5.307 min
 Delta R.T.: -0.002 min
 Response: 13290084
 Conc: 3.88 ng/ml



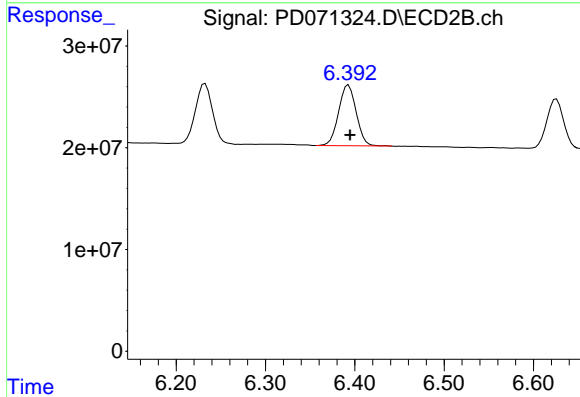
#12 4,4'-DDE

R.T.: 6.232 min
 Delta R.T.: -0.001 min
 Response: 77994663
 Conc: 5.46 ng/ml

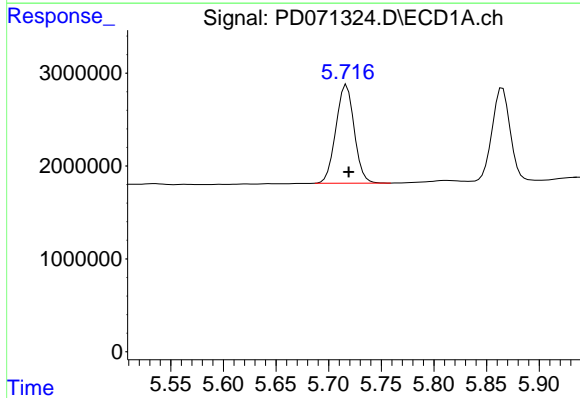


#13 Dieldrin
 R.T.: 5.439 min
 Delta R.T.: -0.002 min
 Response: 14733822
 Conc: 4.07 ng/ml

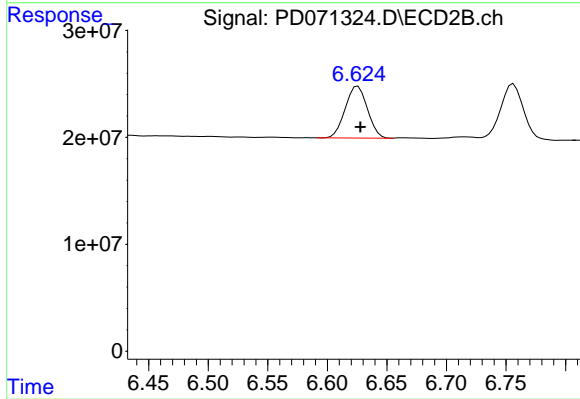
Instrument :
 ECD_D
 ClientSampleId :
 LOQ-SOIL-02-QT3-2022



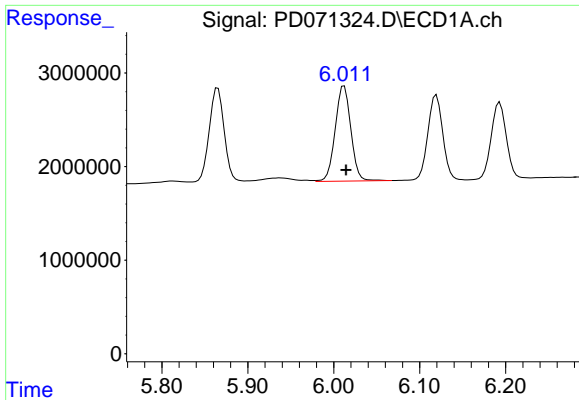
#13 Dieldrin
 R.T.: 6.393 min
 Delta R.T.: -0.002 min
 Response: 81513132
 Conc: 5.55 ng/ml



#14 Endrin
 R.T.: 5.717 min
 Delta R.T.: -0.002 min
 Response: 12875373
 Conc: 4.07 ng/ml



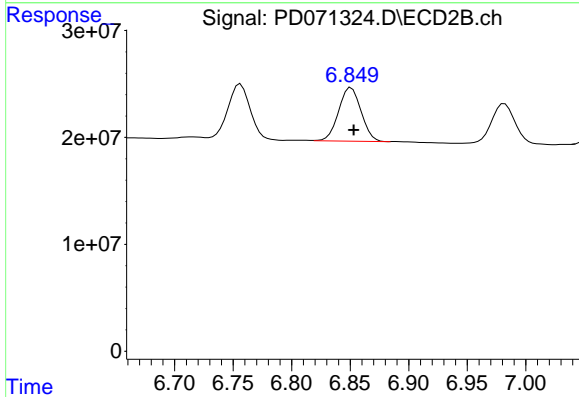
#14 Endrin
 R.T.: 6.626 min
 Delta R.T.: -0.002 min
 Response: 62782651
 Conc: 5.02 ng/ml



#15 Endosulfan II

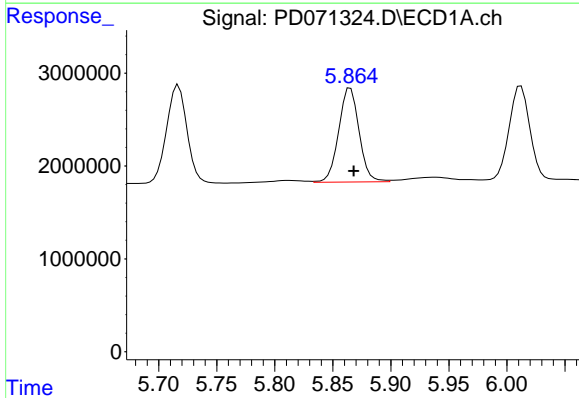
R.T.: 6.012 min
 Delta R.T.: -0.002 min
 Response: 12832135
 Conc: 4.27 ng/ml

Instrument :
 ECD_D
 ClientSampleId :
 LOQ-SOIL-02-QT3-2022



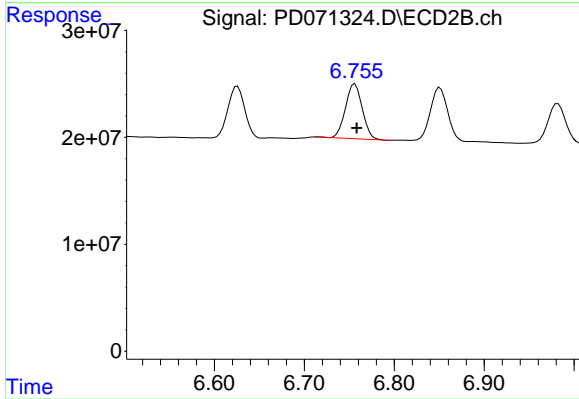
#15 Endosulfan II

R.T.: 6.851 min
 Delta R.T.: -0.002 min
 Response: 66872473
 Conc: 5.39 ng/ml



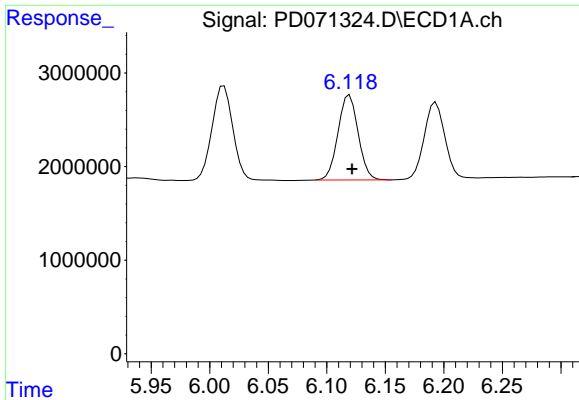
#16 4,4'-DDD

R.T.: 5.865 min
 Delta R.T.: -0.003 min
 Response: 12373215
 Conc: 4.34 ng/ml



#16 4,4'-DDD

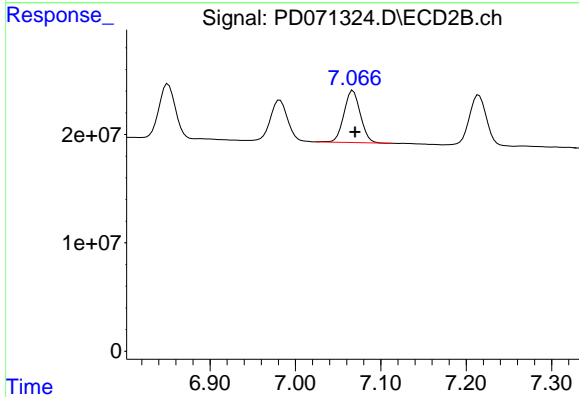
R.T.: 6.756 min
 Delta R.T.: -0.002 min
 Response: 66930029
 Conc: 5.63 ng/ml



#17 4,4'-DDT

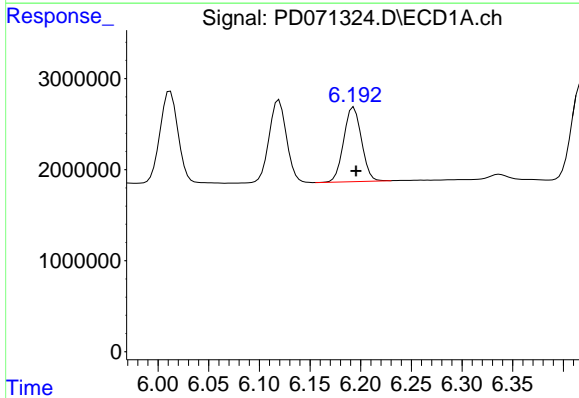
R.T.: 6.119 min
 Delta R.T.: -0.002 min
 Response: 10888988
 Conc: 3.69 ng/ml

Instrument :
 ECD_D
 ClientSampleId :
 LOQ-SOIL-02-QT3-2022



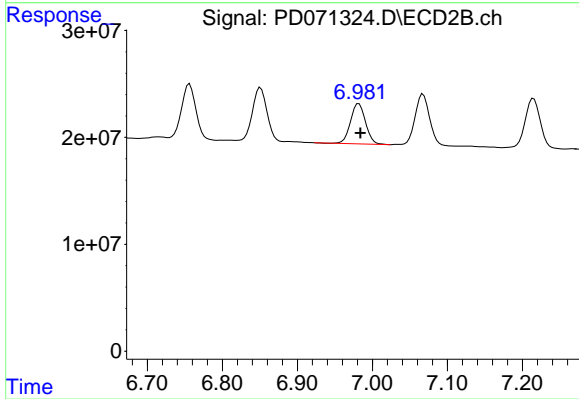
#17 4,4'-DDT

R.T.: 7.068 min
 Delta R.T.: -0.002 min
 Response: 64440219
 Conc: 4.94 ng/ml



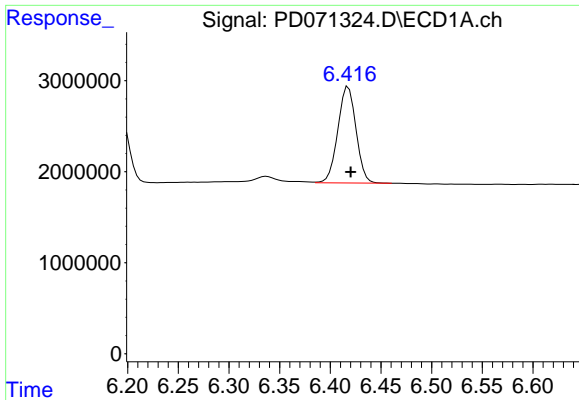
#18 Endrin aldehyde

R.T.: 6.193 min
 Delta R.T.: -0.002 min
 Response: 9962567
 Conc: 4.52 ng/ml



#18 Endrin aldehyde

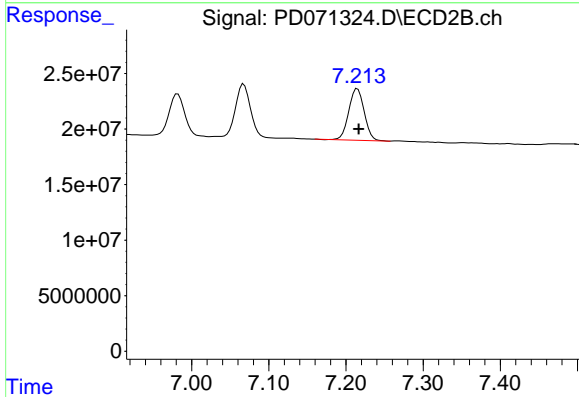
R.T.: 6.982 min
 Delta R.T.: -0.002 min
 Response: 52596413
 Conc: 5.43 ng/ml



#19 Endosulfan Sulfate

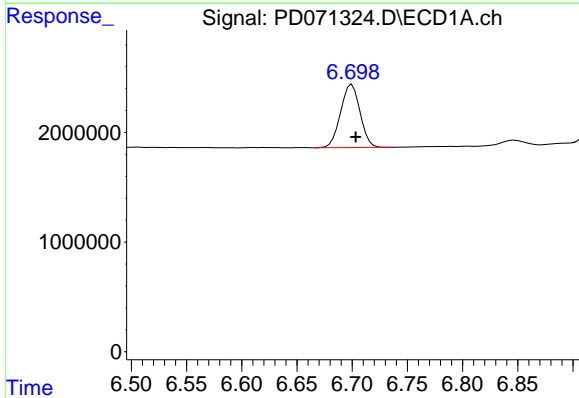
R.T.: 6.418 min
 Delta R.T.: -0.002 min
 Response: 13224525
 Conc: 4.60 ng/ml

Instrument :
 ECD_D
 ClientSampleId :
 LOQ-SOIL-02-QT3-2022



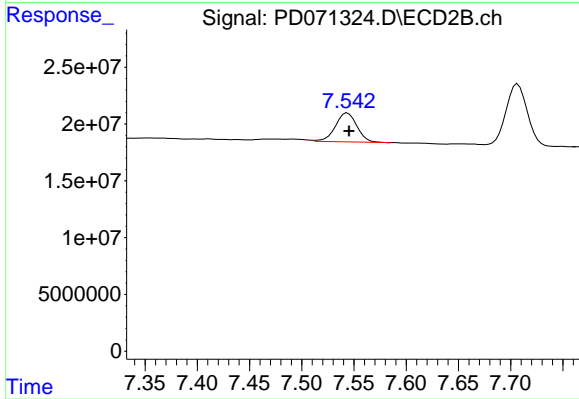
#19 Endosulfan Sulfate

R.T.: 7.215 min
 Delta R.T.: -0.002 min
 Response: 64911572
 Conc: 5.44 ng/ml



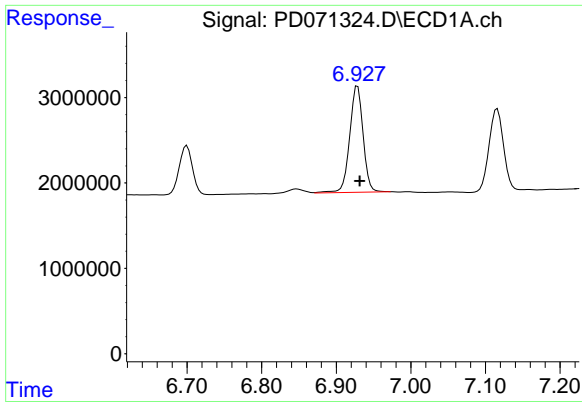
#20 Methoxychlor

R.T.: 6.700 min
 Delta R.T.: -0.003 min
 Response: 7061932
 Conc: 4.28 ng/ml



#20 Methoxychlor

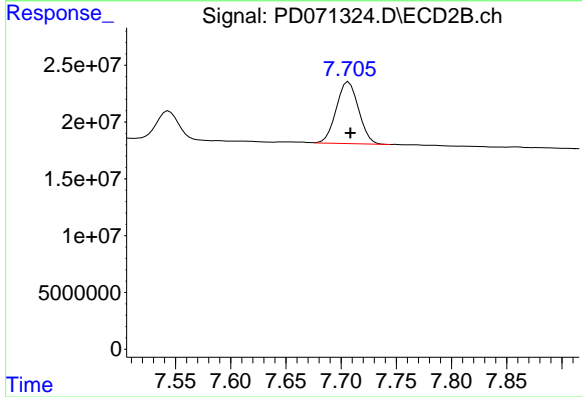
R.T.: 7.544 min
 Delta R.T.: -0.002 min
 Response: 36119798
 Conc: 5.24 ng/ml



#21 Endrin ketone

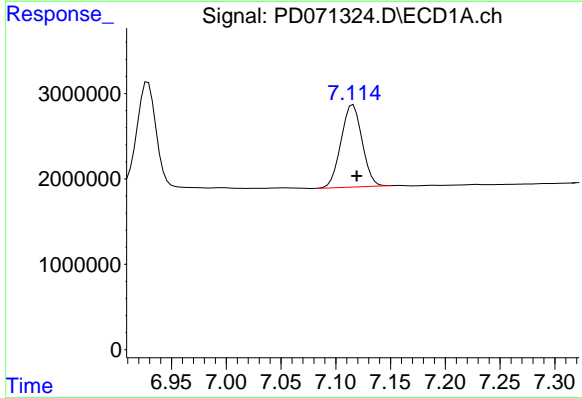
R.T.: 6.929 min
 Delta R.T.: -0.003 min
 Response: 15549313
 Conc: 4.77 ng/ml

Instrument :
 ECD_D
 ClientSampleId :
 LOQ-SOIL-02-QT3-2022



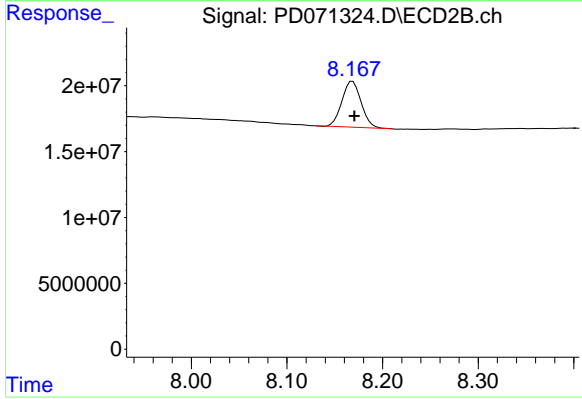
#21 Endrin ketone

R.T.: 7.707 min
 Delta R.T.: -0.002 min
 Response: 76466100
 Conc: 5.70 ng/ml



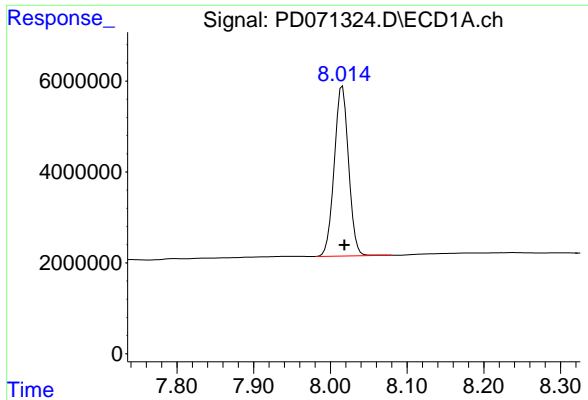
#22 Mirex

R.T.: 7.116 min
 Delta R.T.: -0.003 min
 Response: 12898160
 Conc: 5.27 ng/ml



#22 Mirex

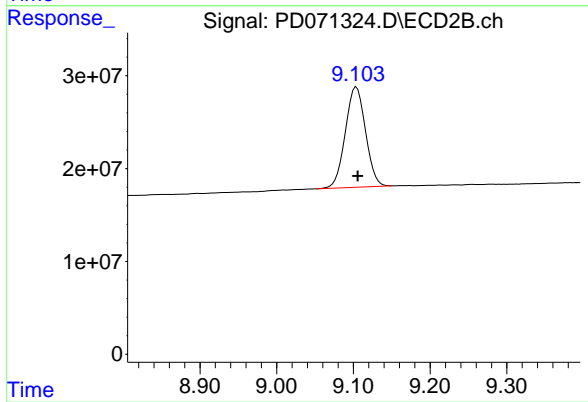
R.T.: 8.169 min
 Delta R.T.: -0.002 min
 Response: 48688924
 Conc: 5.66 ng/ml



#28 Decachlorobiphenyl

R.T.: 8.016 min
Delta R.T.: -0.003 min
Response: 48554468
Conc: 17.51 ng/ml

Instrument :
ECD_D
ClientSampleId :
LOQ-SOIL-02-QT3-2022



#28 Decachlorobiphenyl

R.T.: 9.104 min
Delta R.T.: -0.002 min
Response: 199519012
Conc: 19.27 ng/ml