

Data Path : Z:\pestpcbsrv\HPCHEM1\ECD_D\Data\PD080422\
 Data File : PD071325.D
 Signal(s) : Signal #1: ECD1A.ch Signal #2: ECD2B.ch
 Acq On : 04 Aug 2022 14:06
 Operator : AR\AJ
 Sample : N3980-01
 Misc : CHLOR LOD 25 PPB
 ALS Vial : 11 Sample Multiplier: 1

Instrument :
 ECD_D
ClientSampleId :
 LOD-MDL-SOIL-01-QT3-2022

Integration File signal 1: autoint1.e
 Integration File signal 2: autoint2.e
 Quant Time: Aug 05 03:20:48 2022
 Quant Method : Z:\pestpcbsrv\HPCHEM1\ECD_D\Method\PD072622.M
 Quant Title : GC Extractables
 QLast Update : Tue Jul 26 03:39:07 2022
 Response via : Initial Calibration
 Integrator: ChemStation

Volume Inj. : 2 µl
 Signal #1 Phase : ZB-MR2 Signal #2 Phase: ZB-MR1
 Signal #1 Info : 30M x 0.32mm x0.2 Signal #2 Info : 30M x 0.32mm x 0.50µm

Compound	RT#1	RT#2	Resp#1	Resp#2	ng/ml	ng/ml

System Monitoring Compounds						
1) SA Tetrachlo...	2.815	3.573	46394324	521.5E6	16.359	18.526
28) SA Decachlor...	8.016	9.103	48640053	198.7E6	17.537	19.189
Target Compounds						
23) Chlordane-1	3.829	4.737	2128698	19657213	19.826	25.977 #
24) Chlordane-2	4.412	5.270	2585669	15858174	22.060m	26.474
25) Chlordane-3	5.051	5.981	7210202	55229445	21.116	29.791m#
26) Chlordane-4	5.115	6.060	6847524	63674875	21.584	29.214m#
27) Chlordane-5	6.019	6.921	2534954	11320113	20.966	25.028m

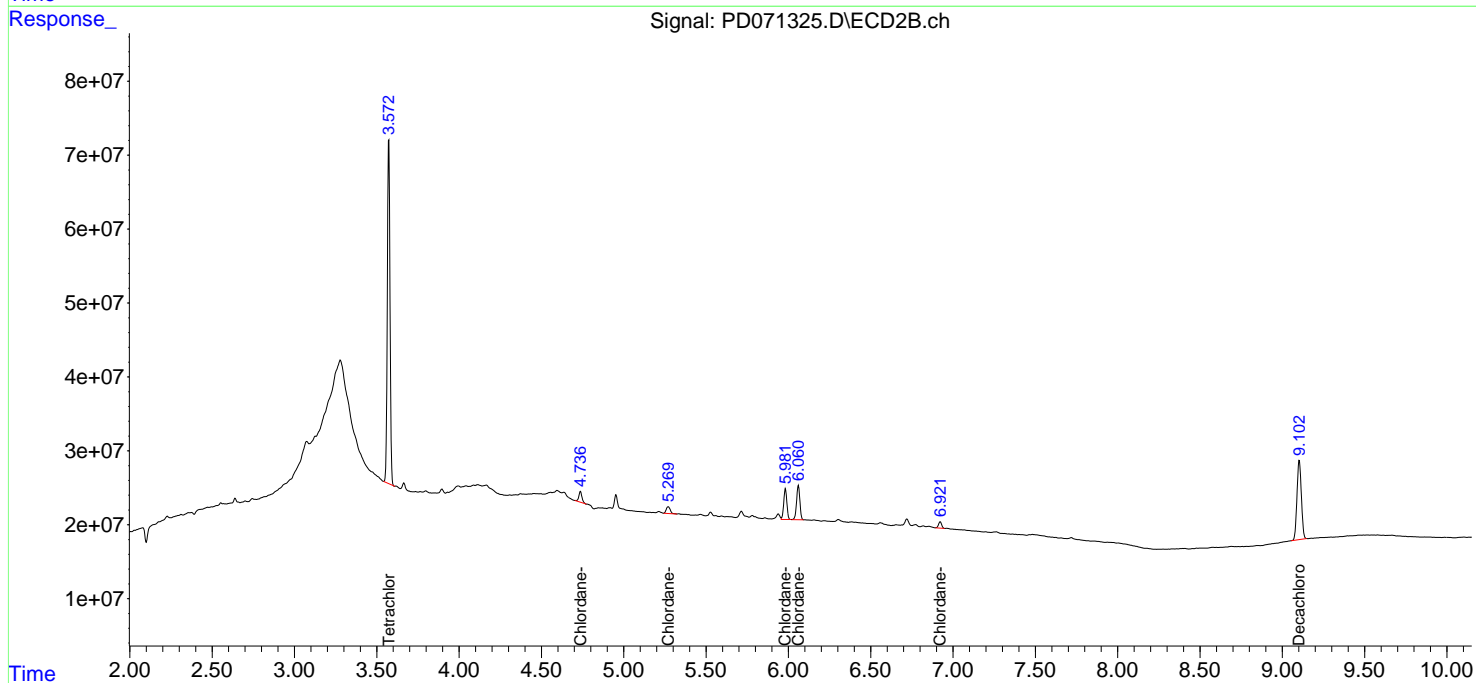
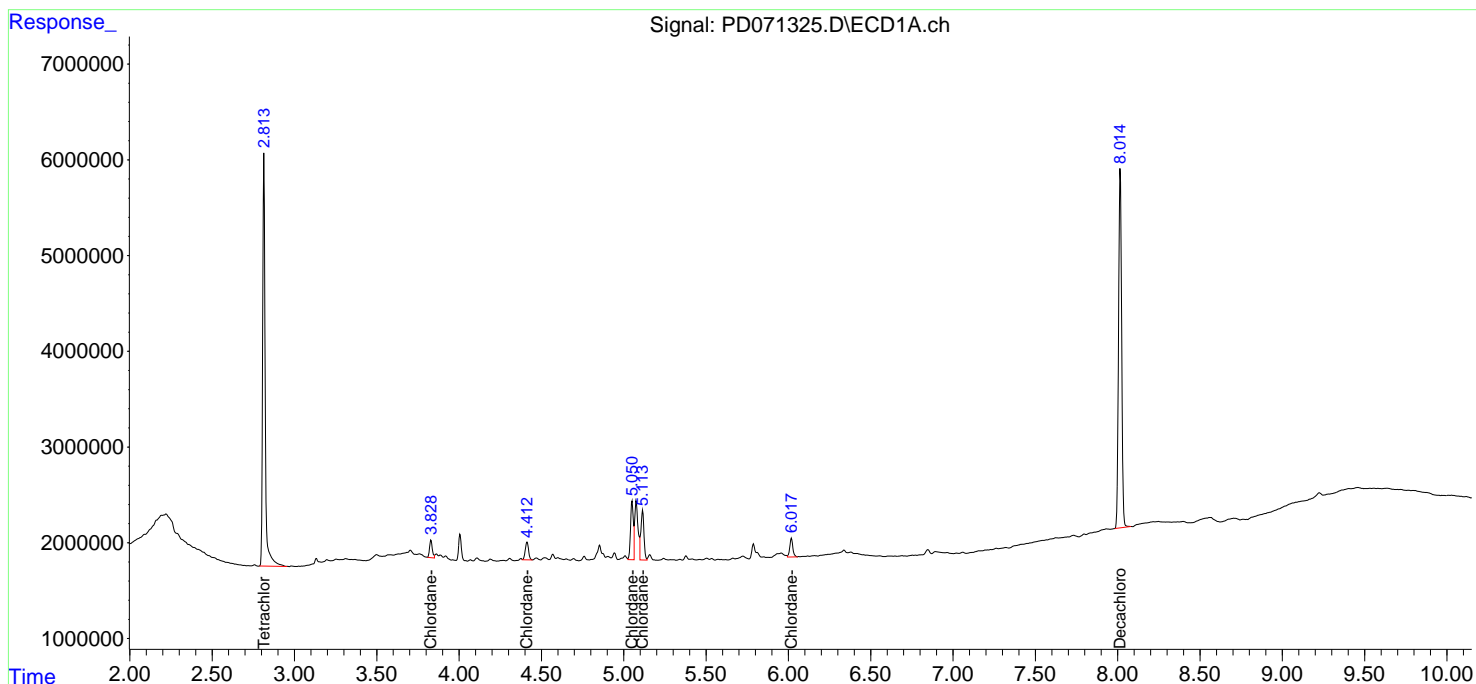
(f)=RT Delta > 1/2 Window (#)=Amounts differ by > 25% (m)=manual int.

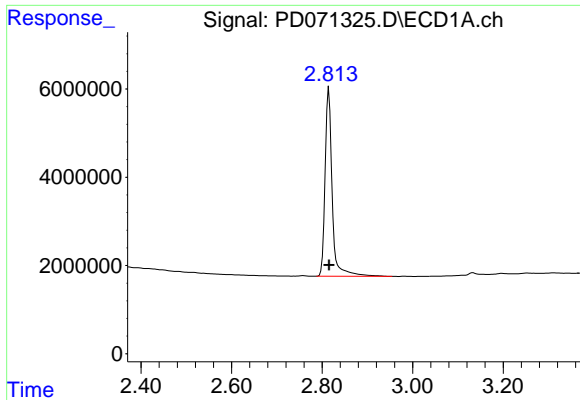
Data Path : Z:\pestpcbsrv\HPCHEM1\ECD_D\Data\PD080422\
 Data File : PD071325.D
 Signal(s) : Signal #1: ECD1A.ch Signal #2: ECD2B.ch
 Acq On : 04 Aug 2022 14:06
 Operator : AR\AJ
 Sample : N3980-01
 Misc : CHLOR LOD 25 PPB
 ALS Vial : 11 Sample Multiplier: 1

Instrument :
 ECD_D
 ClientSampleId :
 LOD-MDL-SOIL-01-QT3-2022

Integration File signal 1: autoint1.e
 Integration File signal 2: autoint2.e
 Quant Time: Aug 05 03:20:48 2022
 Quant Method : Z:\pestpcbsrv\HPCHEM1\ECD_D\Method\PD072622.M
 Quant Title : GC Extractables
 QLast Update : Tue Jul 26 03:39:07 2022
 Response via : Initial Calibration
 Integrator: ChemStation

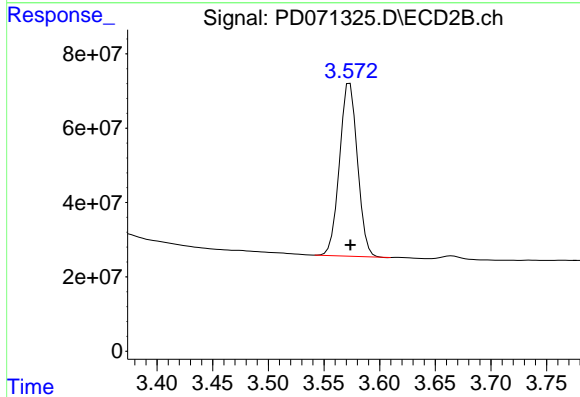
Volume Inj. : 2 µl
 Signal #1 Phase : ZB-MR2 Signal #2 Phase: ZB-MR1
 Signal #1 Info : 30M x 0.32mm x0.2 Signal #2 Info : 30M x 0.32mm x 0.50µm



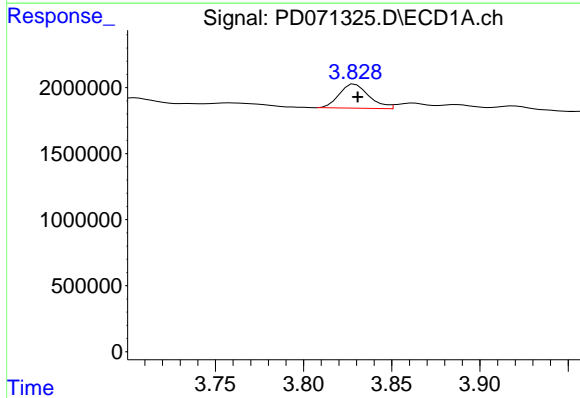


#1 Tetrachloro-m-xylene
 R.T.: 2.815 min
 Delta R.T.: 0.000 min
 Response: 46394324
 Conc: 16.36 ng/ml

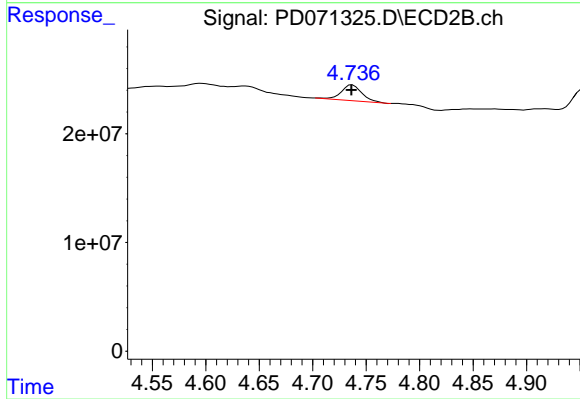
Instrument :
 ECD_D
 ClientSampleId :
 LOD-MDL-SOIL-01-QT3-2022



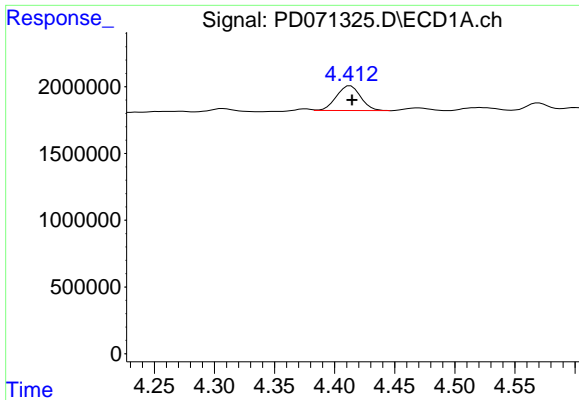
#1 Tetrachloro-m-xylene
 R.T.: 3.573 min
 Delta R.T.: 0.000 min
 Response: 521504097
 Conc: 18.53 ng/ml



#23 Chlordane-1
 R.T.: 3.829 min
 Delta R.T.: -0.001 min
 Response: 2128698
 Conc: 19.83 ng/ml



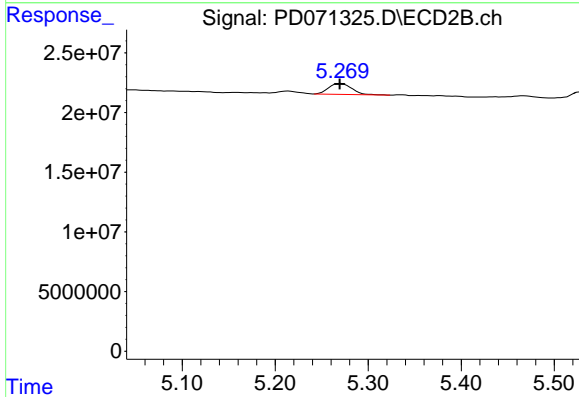
#23 Chlordane-1
 R.T.: 4.737 min
 Delta R.T.: 0.000 min
 Response: 19657213
 Conc: 25.98 ng/ml



#24 Chlordane-2

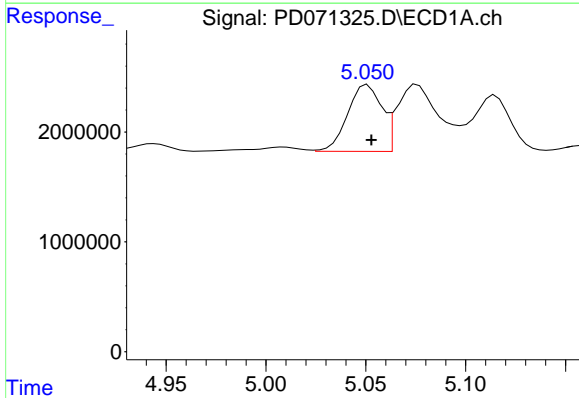
R.T.: 4.412 min
 Delta R.T.: -0.003 min
 Response: 2585669
 Conc: 22.06 ng/ml

Instrument :
 ECD_D
 ClientSampleId :
 LOD-MDL-SOIL-01-QT3-2022



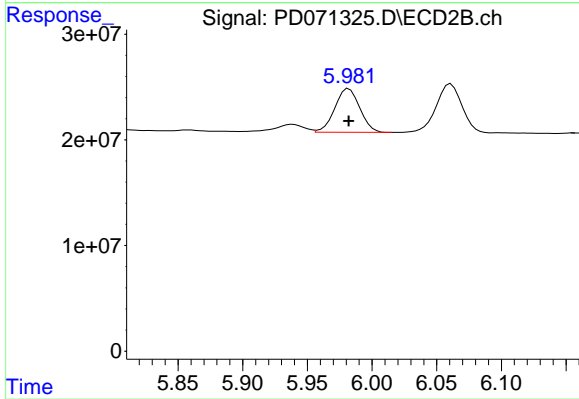
#24 Chlordane-2

R.T.: 5.270 min
 Delta R.T.: 0.001 min
 Response: 15858174
 Conc: 26.47 ng/ml



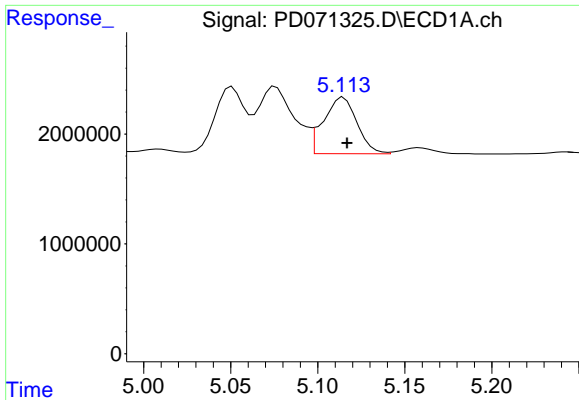
#25 Chlordane-3

R.T.: 5.051 min
 Delta R.T.: -0.002 min
 Response: 7210202
 Conc: 21.12 ng/ml



#25 Chlordane-3

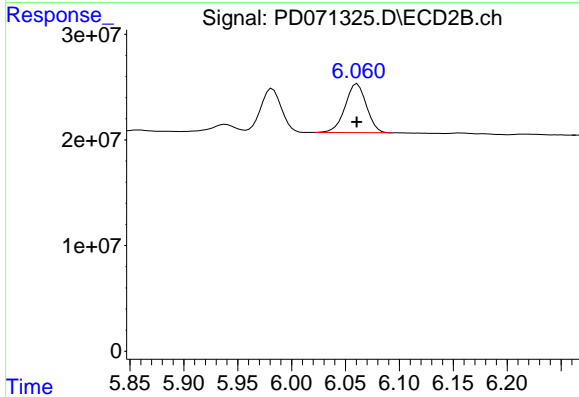
R.T.: 5.981 min
 Delta R.T.: -0.001 min
 Response: 55229445
 Conc: 29.79 ng/ml m



#26 Chlordane-4

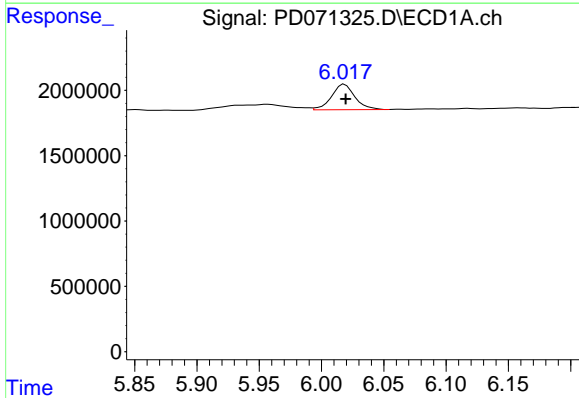
R.T.: 5.115 min
 Delta R.T.: -0.002 min
 Response: 6847524
 Conc: 21.58 ng/ml

Instrument :
 ECD_D
 ClientSampleId :
 LOD-MDL-SOIL-01-QT3-2022



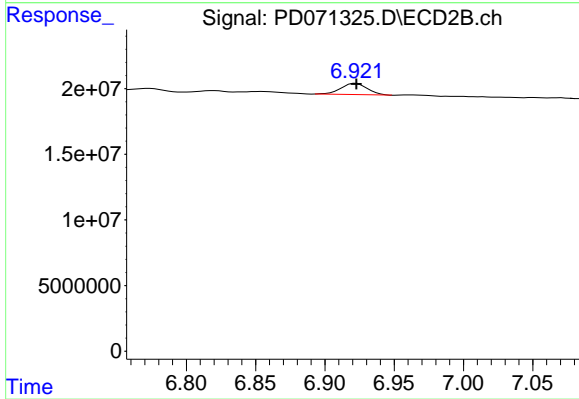
#26 Chlordane-4

R.T.: 6.060 min
 Delta R.T.: 0.000 min
 Response: 63674875
 Conc: 29.21 ng/ml m



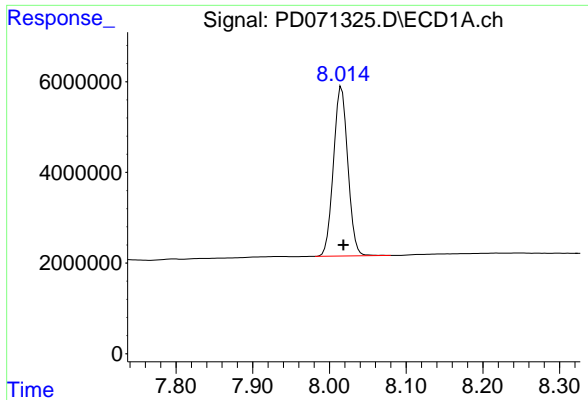
#27 Chlordane-5

R.T.: 6.019 min
 Delta R.T.: 0.000 min
 Response: 2534954
 Conc: 20.97 ng/ml



#27 Chlordane-5

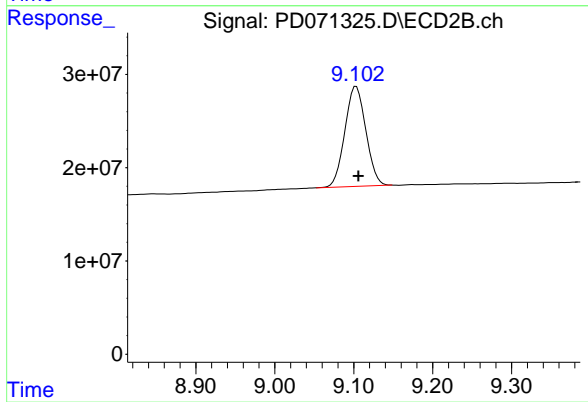
R.T.: 6.921 min
 Delta R.T.: -0.001 min
 Response: 11320113
 Conc: 25.03 ng/ml m



#28 Decachlorobiphenyl

R.T.: 8.016 min
Delta R.T.: -0.003 min
Response: 48640053
Conc: 17.54 ng/ml

Instrument :
ECD_D
ClientSampleId :
LOD-MDL-SOIL-01-QT3-2022



#28 Decachlorobiphenyl

R.T.: 9.103 min
Delta R.T.: -0.003 min
Response: 198653774
Conc: 19.19 ng/ml