

Data Path : Z:\pestpcbsrv\HPCHEM1\ECD_D\Data\PD080422\
 Data File : PD071332.D
 Signal(s) : Signal #1: ECD1A.ch Signal #2: ECD2B.ch
 Acq On : 04 Aug 2022 15:42
 Operator : AR\AJ
 Sample : PTOXCCC500
 Misc :
 ALS Vial : 6 Sample Multiplier: 1

Instrument :
 ECD_D
ClientSampleId :
 PTOXCCC500

Integration File signal 1: autoint1.e
 Integration File signal 2: autoint2.e
 Quant Time: Aug 05 04:45:47 2022
 Quant Method : Z:\pestpcbsrv\HPCHEM1\ECD_D\Method\DTX072622.M
 Quant Title : GC Extractables
 QLast Update : Tue Jul 26 04:20:10 2022
 Response via : Initial Calibration
 Integrator: ChemStation

Volume Inj. : 1 µl
 Signal #1 Phase : ZB-MR2 Signal #2 Phase: ZB-MR1
 Signal #1 Info : 30M x 0.32mm x0.2 Signal #2 Info : 30M x 0.32mm x 0.50µm

Compound	RT#1	RT#2	Resp#1	Resp#2	ng/ml	ng/ml

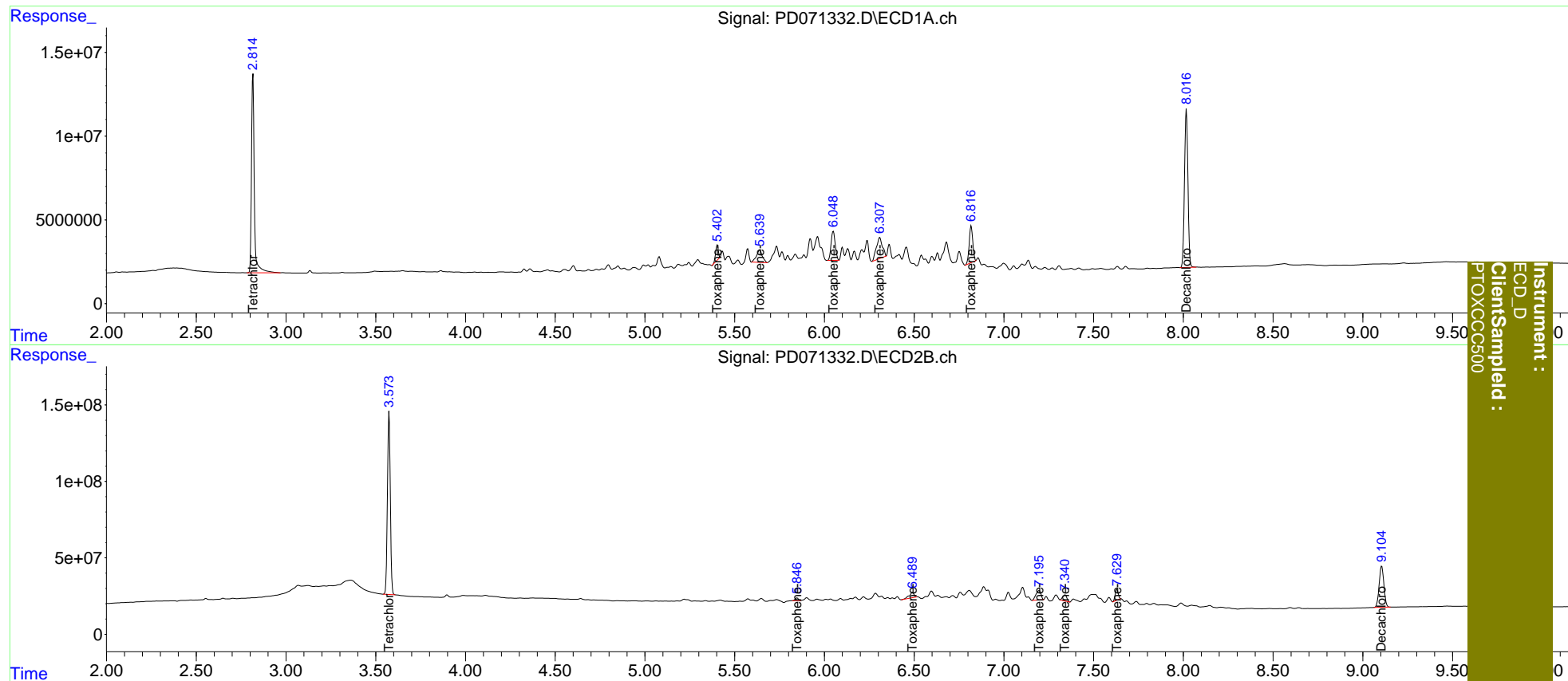
System Monitoring Compounds						
1) SA Tetrachlo...	2.816	3.574	129.4E6	1325.6E6	49.182	49.933
7) SA Decachlor...	8.017	9.105	125.4E6	495.9E6	48.819	52.540
Target Compounds						
2) Toxaphene-1	5.403	5.847	9096150	21141590	476.039	536.931
3) Toxaphene-2	5.640	6.491	16701861	63700184	445.185	497.366
4) Toxaphene-3	6.050	7.197	27733652	119.5E6	476.572	515.830
5) Toxaphene-4	6.309	7.341	28969060	63500392	489.807	496.310
6) Toxaphene-5	6.818	7.630	30107358	87395973	503.004	523.474

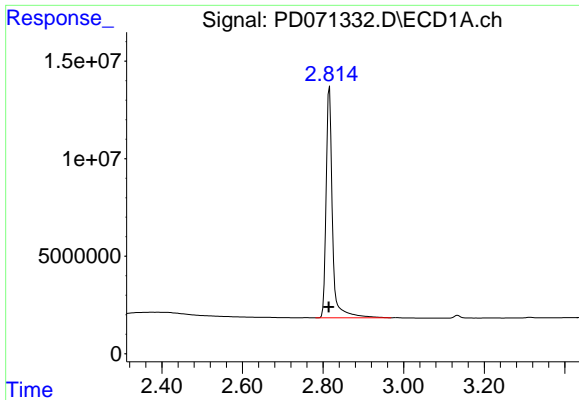
(f)=RT Delta > 1/2 Window (#)=Amounts differ by > 25% (m)=manual int.

Data Path : Z:\pestpcbsrv\HPCHEM1\ECD_D\Data\PD080422\
 Data File : PD071332.D
 Signal(s) : Signal #1: ECD1A.ch Signal #2: ECD2B.ch
 Acq On : 04 Aug 2022 15:42
 Operator : AR\AJ
 Sample : PTOXCCC500
 Misc :
 ALS Vial : 6 Sample Multiplier: 1

Integration File signal 1: autoint1.e
 Integration File signal 2: autoint2.e
 Quant Time: Aug 05 04:45:47 2022
 Quant Method : Z:\pestpcbsrv\HPCHEM1\ECD_D\Method\DTX072622.M
 Quant Title : GC Extractables
 QLast Update : Tue Jul 26 04:20:10 2022
 Response via : Initial Calibration
 Integrator: ChemStation

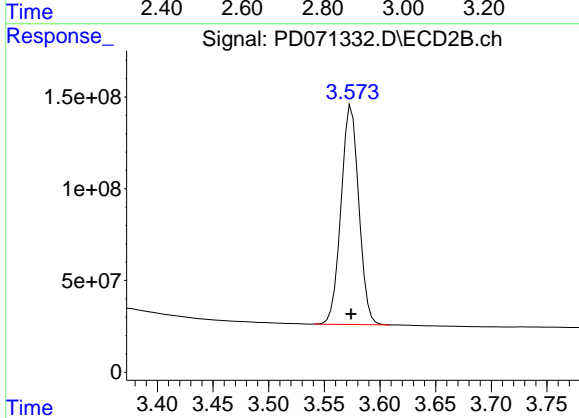
Volume Inj. : 1 µl
 Signal #1 Phase : ZB-MR2 Signal #2 Phase: ZB-MR1
 Signal #1 Info : 30M x 0.32mm x0.2 Signal #2 Info : 30M x 0.32mm x 0.50µm



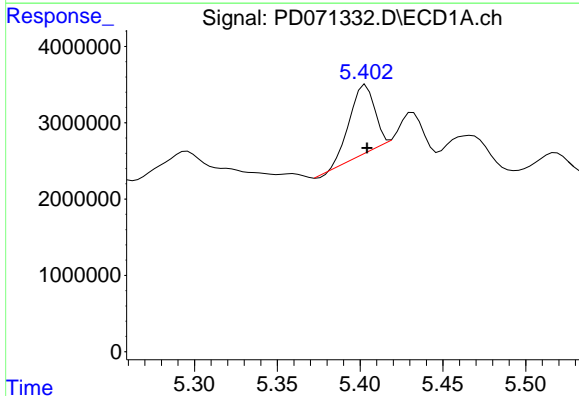


#1 Tetrachloro-m-xylene
 R.T.: 2.816 min
 Delta R.T.: 0.002 min
 Response: 129395872
 Conc: 49.18 ng/ml

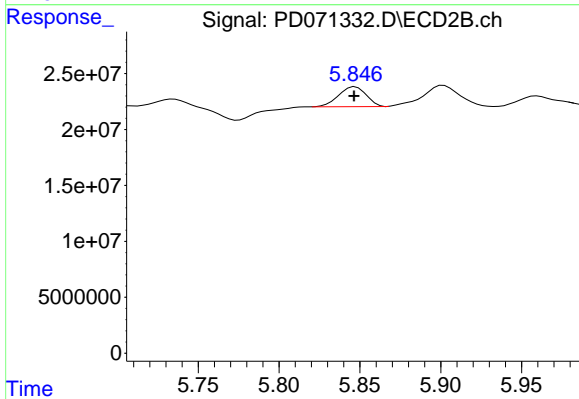
Instrument :
 ECD_D
 ClientSampleId :
 PTOXCCC500



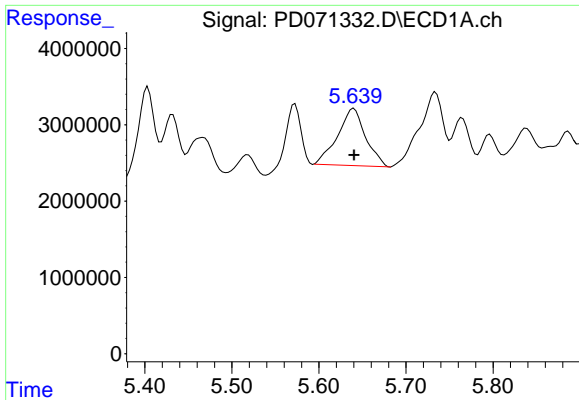
#1 Tetrachloro-m-xylene
 R.T.: 3.574 min
 Delta R.T.: 0.000 min
 Response: 1325623549
 Conc: 49.93 ng/ml



#2 Toxaphene-1
 R.T.: 5.403 min
 Delta R.T.: 0.000 min
 Response: 9096150
 Conc: 476.04 ng/ml



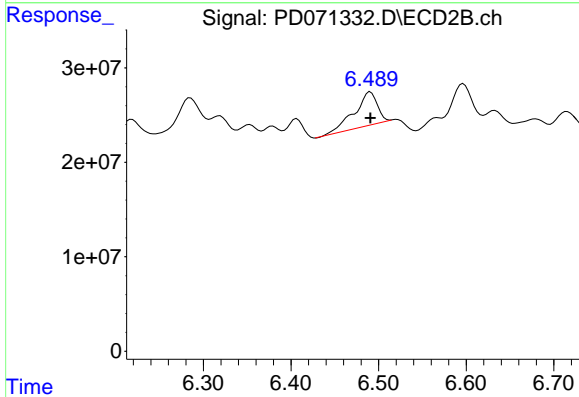
#2 Toxaphene-1
 R.T.: 5.847 min
 Delta R.T.: 0.000 min
 Response: 21141590
 Conc: 536.93 ng/ml



#3 Toxaphene-2

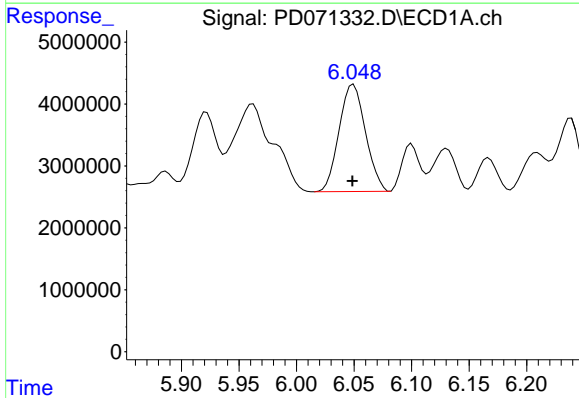
R.T.: 5.640 min
 Delta R.T.: 0.000 min
 Response: 16701861
 Conc: 445.19 ng/ml

Instrument :
 ECD_D
 ClientSampleId :
 PTOXCCC500



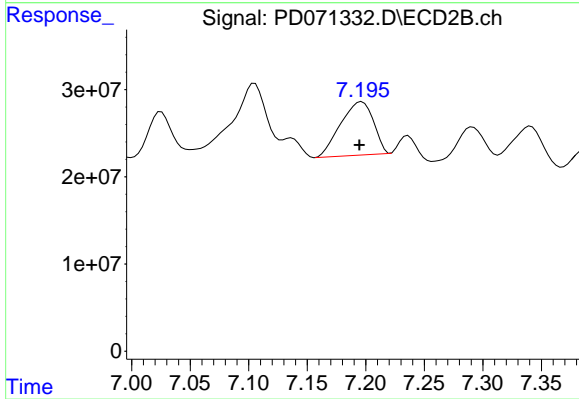
#3 Toxaphene-2

R.T.: 6.491 min
 Delta R.T.: 0.000 min
 Response: 63700184
 Conc: 497.37 ng/ml



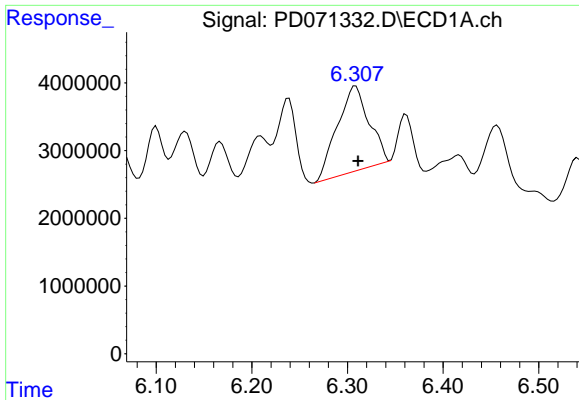
#4 Toxaphene-3

R.T.: 6.050 min
 Delta R.T.: 0.000 min
 Response: 27733652
 Conc: 476.57 ng/ml



#4 Toxaphene-3

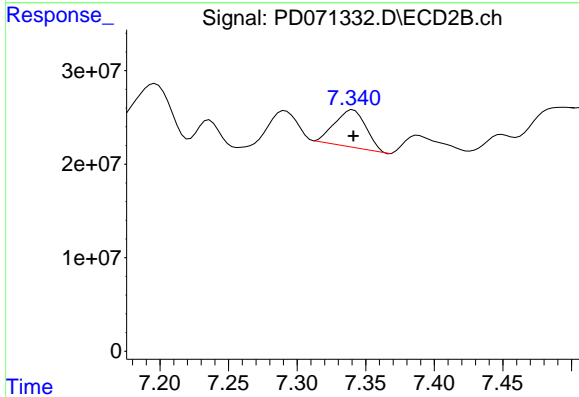
R.T.: 7.197 min
 Delta R.T.: 0.002 min
 Response: 119487086
 Conc: 515.83 ng/ml



#5 Toxaphene-4

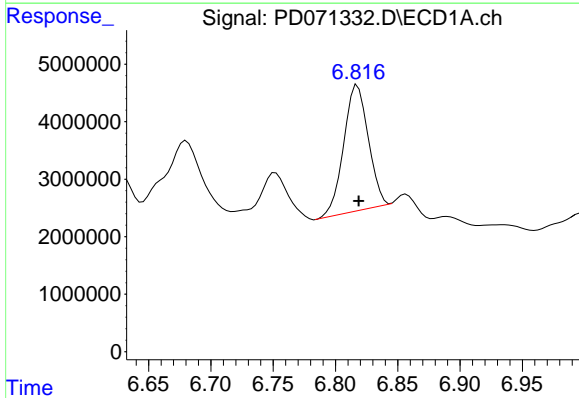
R.T.: 6.309 min
 Delta R.T.: -0.002 min
 Response: 28969060
 Conc: 489.81 ng/ml

Instrument :
 ECD_D
 ClientSampleId :
 PTOXCCC500



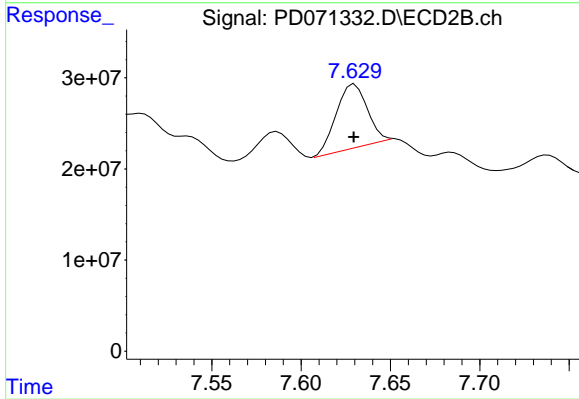
#5 Toxaphene-4

R.T.: 7.341 min
 Delta R.T.: 0.000 min
 Response: 63500392
 Conc: 496.31 ng/ml



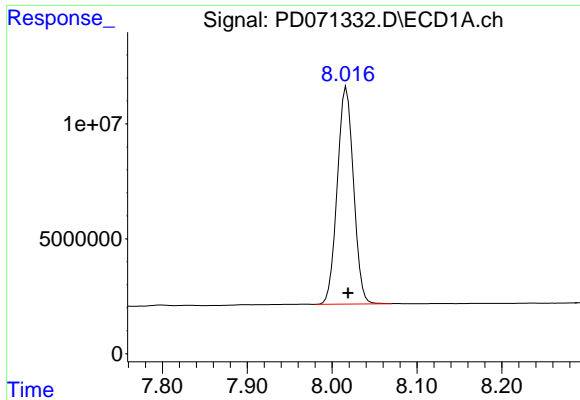
#6 Toxaphene-5

R.T.: 6.818 min
 Delta R.T.: 0.000 min
 Response: 30107358
 Conc: 503.00 ng/ml



#6 Toxaphene-5

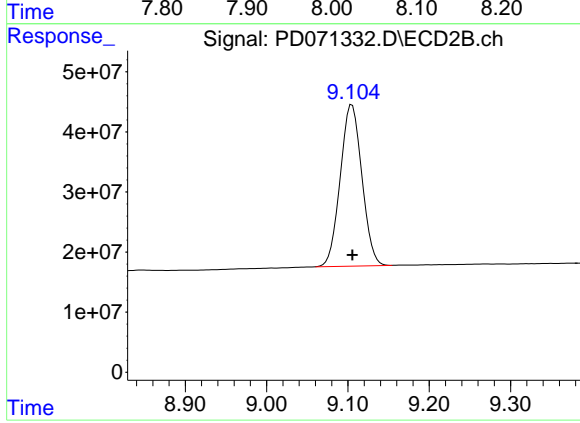
R.T.: 7.630 min
 Delta R.T.: 0.000 min
 Response: 87395973
 Conc: 523.47 ng/ml



#7 Decachlorobiphenyl

R.T.: 8.017 min
Delta R.T.: -0.002 min
Response: 125389056
Conc: 48.82 ng/ml

Instrument :
ECD_D
ClientSampleId :
PTOXCCC500



#7 Decachlorobiphenyl

R.T.: 9.105 min
Delta R.T.: 0.000 min
Response: 495889963
Conc: 52.54 ng/ml