

Data Path : Z:\pestpcbsrv\HPCHEM1\ECD_D\Data\PD080521\
 Data File : PD064769.D
 Signal(s) : Signal #1: ECD1A.ch Signal #2: ECD2B.ch
 Acq On : 05 Aug 2021 14:16
 Operator : AR\AJ
 Sample : M3169-03MSD
 Misc :
 ALS Vial : 19 Sample Multiplier: 1

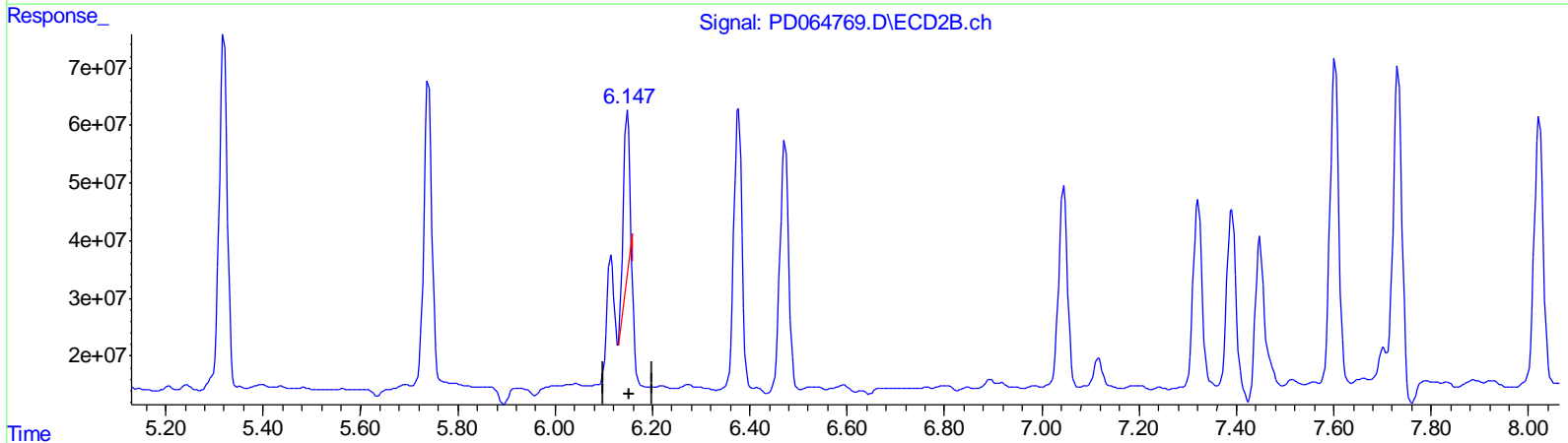
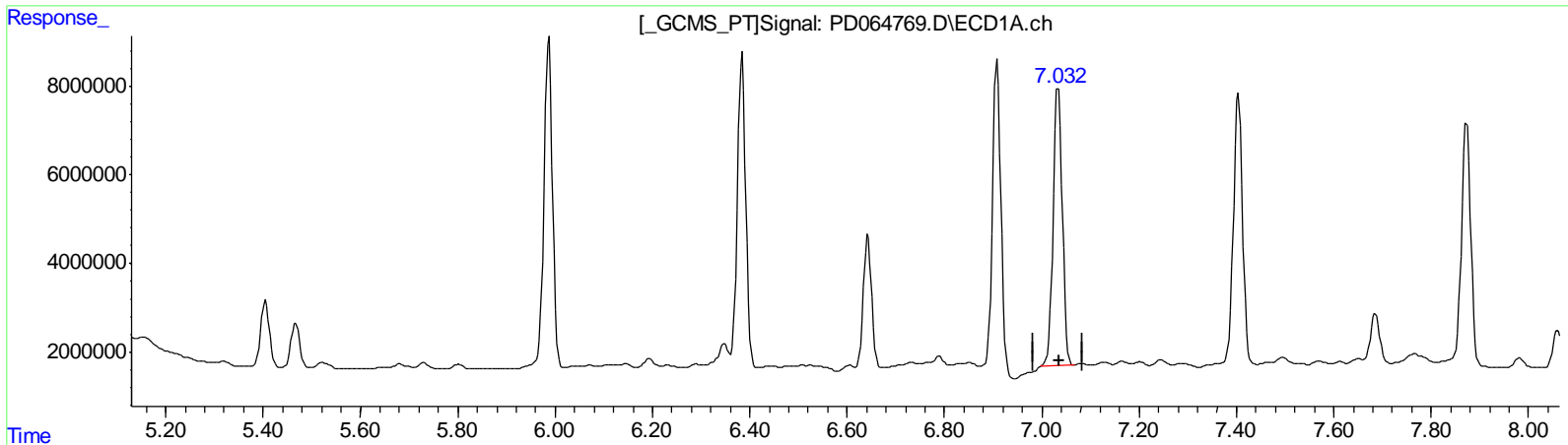
Instrument :
 ECD_D
 ClientSampled :
 C00A2MSD

Manual Integrations
 APPROVED

mohammad
 8/6/2021 3:07:50 PM

Integration File signal 1: autoint1.e
 Integration File signal 2: autoint2.e
 Quant Time: Aug 06 06:54:59 2021
 Quant Method : Z:\pestpcbsrv\HPCHEM1\ECD_D\Method\PD072721CLP.M
 Quant Title : GC Extractables
 QLast Update : Wed Jul 28 07:07:14 2021
 Response via : Initial Calibration
 Integrator: ChemStation

Volume Inj. : 1 µl
 Signal #1 Phase : ZB-MR2 Signal #2 Phase: ZB-MR1
 Signal #1 Info : 30M x 0.32mm x0.2 Signal #2 Info : 30M x 0.32mm x 0.50µm



QEdit

(4) Heptachlor (MA)
 7.034min 49.194 ng/ml
 response 82674947

(4) Heptachlor #2 (MA)
 6.149min 21.610 ng/ml
 response 245017484

(+) = Expected Retention Time

Data Path : Z:\pestpcbsrv\HPCHEM1\ECD_D\Data\PD080521\
 Data File : PD064769.D
 Signal(s) : Signal #1: ECD1A.ch Signal #2: ECD2B.ch
 Acq On : 05 Aug 2021 14:16
 Operator : AR\AJ
 Sample : M3169-03MSD
 Misc :
 ALS Vial : 19 Sample Multiplier: 1

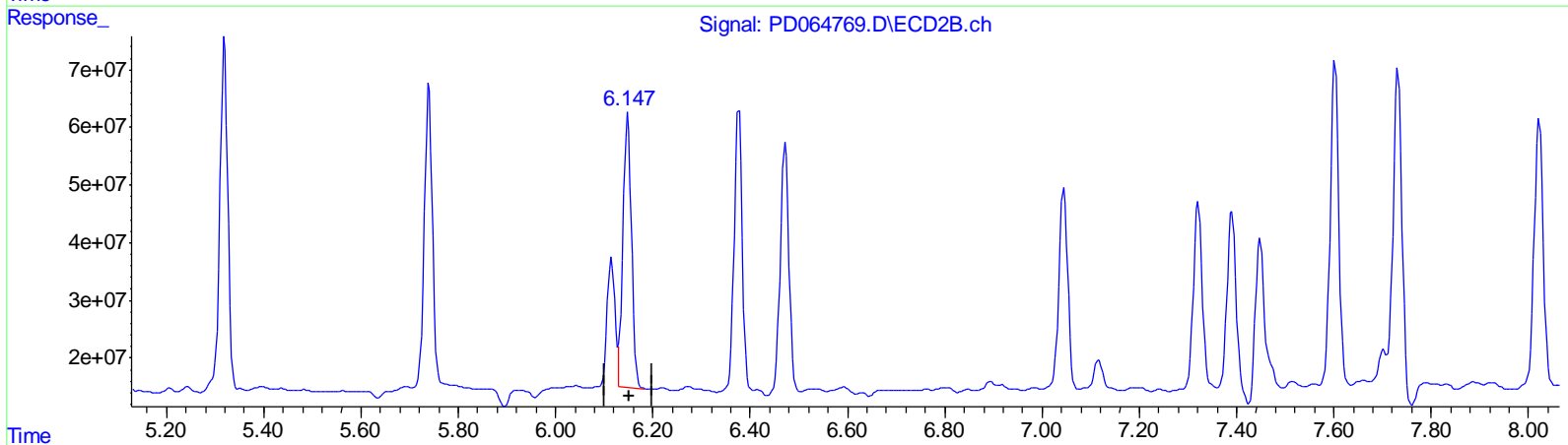
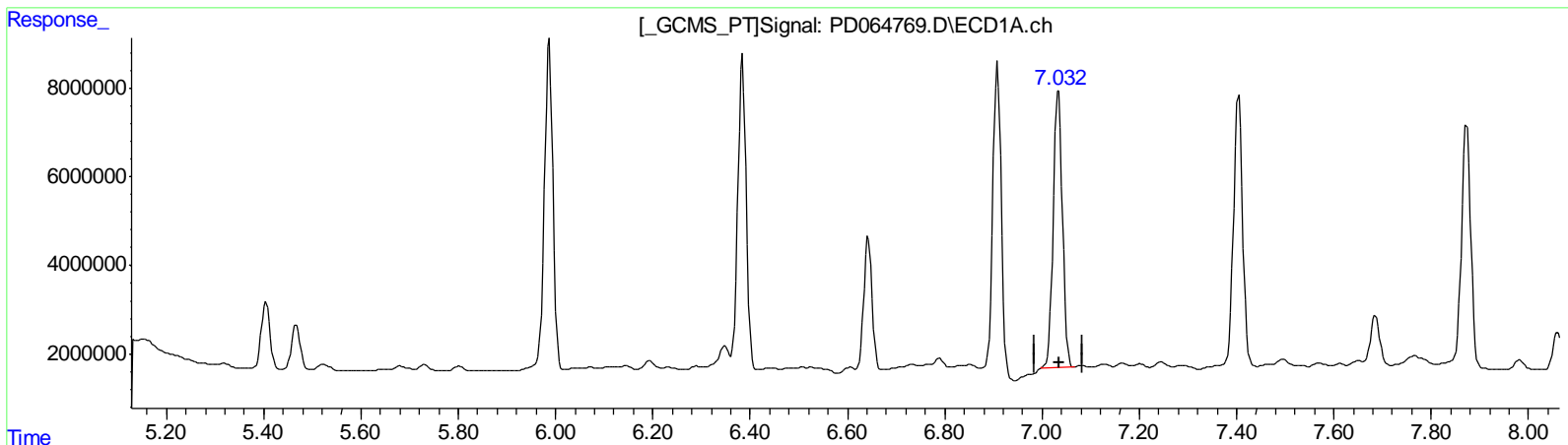
Instrument :
 ECD_D
 ClientSampled :
 C00A2MSD

Manual Integrations
 APPROVED

mohammad
 8/6/2021 3:07:50 PM

Integration File signal 1: autoint1.e
 Integration File signal 2: autoint2.e
 Quant Time: Aug 06 06:54:59 2021
 Quant Method : Z:\pestpcbsrv\HPCHEM1\ECD_D\Method\PD072721CLP.M
 Quant Title : GC Extractables
 QLast Update : Wed Jul 28 07:07:14 2021
 Response via : Initial Calibration
 Integrator: ChemStation

Volume Inj. : 1 µl
 Signal #1 Phase : ZB-MR2 Signal #2 Phase: ZB-MR1
 Signal #1 Info : 30M x 0.32mm x0.2 Signal #2 Info : 30M x 0.32mm x 0.50µm



QEdit

(4) Heptachlor (MA)
 7.034min 49.194 ng/ml
 response 82674947

(4) Heptachlor #2 (MA)
 6.147min 51.743 ng/ml m
 response 586654388

(+) = Expected Retention Time

Data Path : Z:\pestpcbsrv\HPCHEM1\ECD_D\Data\PD080521\
 Data File : PD064769.D
 Signal(s) : Signal #1: ECD1A.ch Signal #2: ECD2B.ch
 Acq On : 05 Aug 2021 14:16
 Operator : AR\AJ
 Sample : M3169-03MSD
 Misc :
 ALS Vial : 19 Sample Multiplier: 1

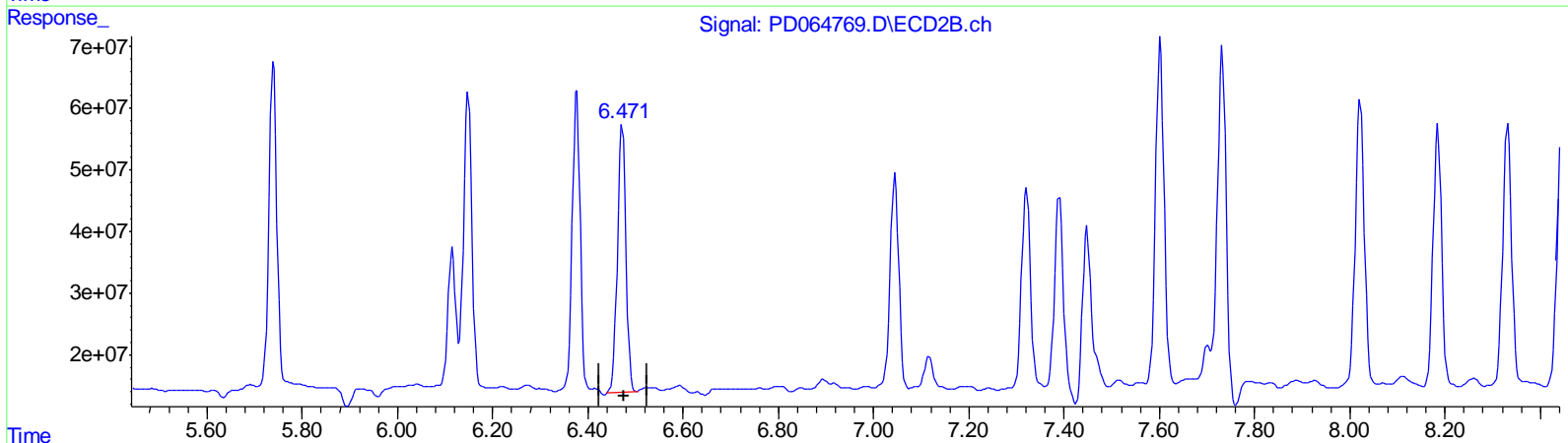
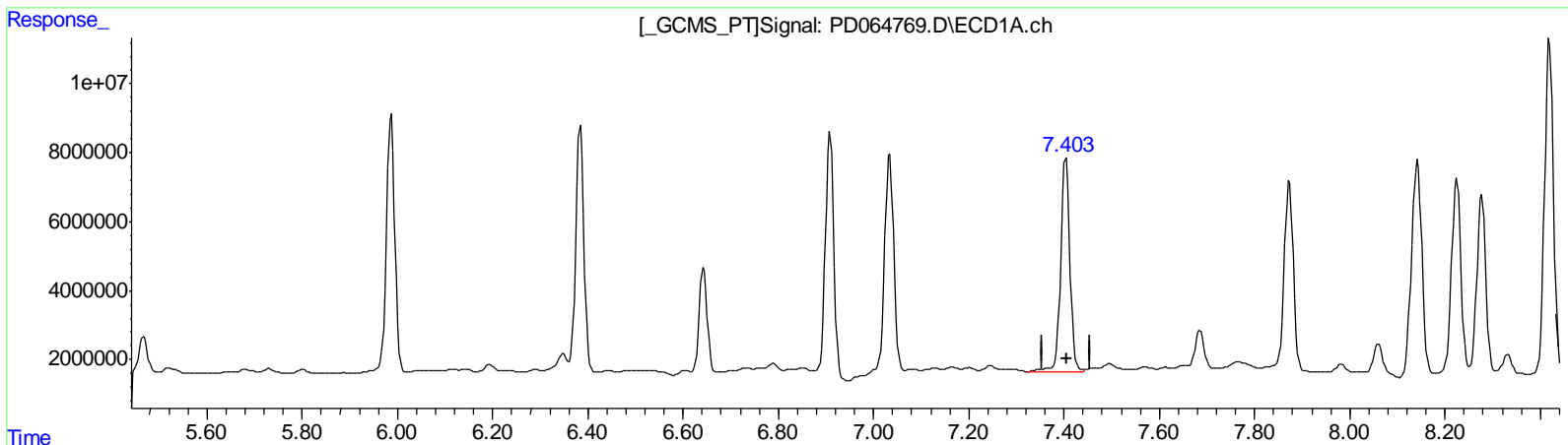
Instrument :
 ECD_D
 ClientSampled :
 C00A2MSD

Manual Integrations
 APPROVED

mohammad
 8/6/2021 3:07:50 PM

Integration File signal 1: autoint1.e
 Integration File signal 2: autoint2.e
 Quant Time: Aug 06 06:54:59 2021
 Quant Method : Z:\pestpcbsrv\HPCHEM1\ECD_D\Method\PD072721CLP.M
 Quant Title : GC Extractables
 QLast Update : Wed Jul 28 07:07:14 2021
 Response via : Initial Calibration
 Integrator: ChemStation

Volume Inj. : 1 µl
 Signal #1 Phase : ZB-MR2 Signal #2 Phase: ZB-MR1
 Signal #1 Info : 30M x 0.32mm x0.2 Signal #2 Info : 30M x 0.32mm x 0.50µm



QEdit

(5) Aldrin (MB)
 7.404min 53.581 ng/ml
 response 84399440

(5) Aldrin #2 (MB)
 6.472min 51.284 ng/ml
 response 539467132

(+) = Expected Retention Time

Data Path : Z:\pestpcbsrv\HPCHEM1\ECD_D\Data\PD080521\
 Data File : PD064769.D
 Signal(s) : Signal #1: ECD1A.ch Signal #2: ECD2B.ch
 Acq On : 05 Aug 2021 14:16
 Operator : AR\AJ
 Sample : M3169-03MSD
 Misc :
 ALS Vial : 19 Sample Multiplier: 1

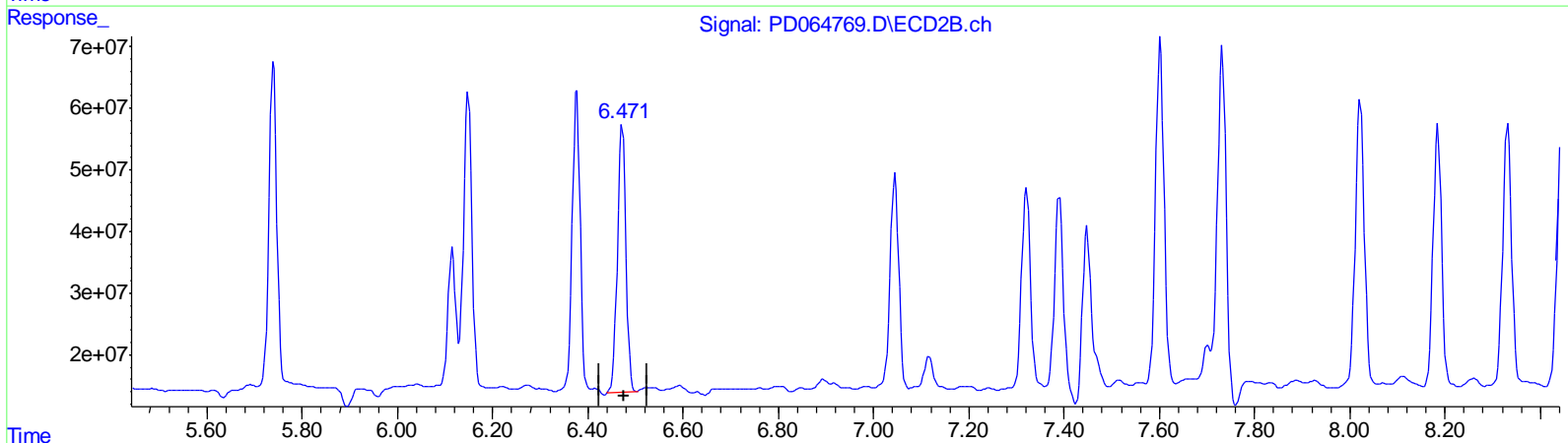
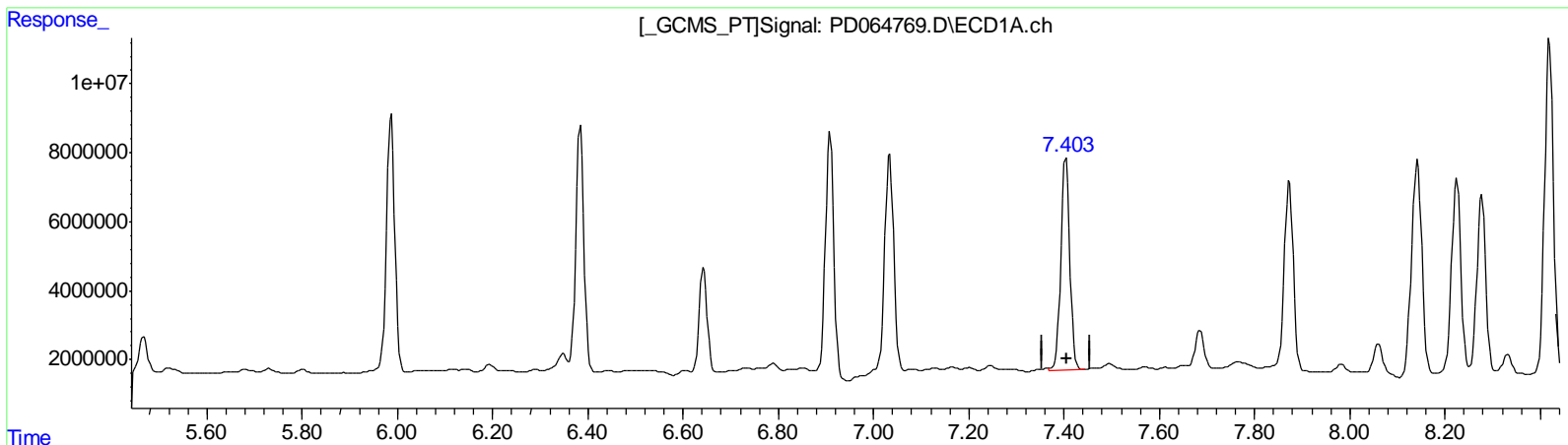
Instrument :
 ECD_D
 ClientSampled :
 C00A2MSD

Manual Integrations
 APPROVED

mohammad
 8/6/2021 3:07:50 PM

Integration File signal 1: autoint1.e
 Integration File signal 2: autoint2.e
 Quant Time: Aug 06 06:54:59 2021
 Quant Method : Z:\pestpcbsrv\HPCHEM1\ECD_D\Method\PD072721CLP.M
 Quant Title : GC Extractables
 QLast Update : Wed Jul 28 07:07:14 2021
 Response via : Initial Calibration
 Integrator: ChemStation

Volume Inj. : 1 µl
 Signal #1 Phase : ZB-MR2 Signal #2 Phase: ZB-MR1
 Signal #1 Info : 30M x 0.32mm x0.2 Signal #2 Info : 30M x 0.32mm x 0.50µm



QEdit

(5) Aldrin (MB)
 7.403min 51.233 ng/ml m
 response 80699733

(5) Aldrin #2 (MB)
 6.472min 51.284 ng/ml
 response 539467132

(+) = Expected Retention Time

Data Path : Z:\pestpcbsrv\HPCHEM1\ECD_D\Data\PD080521\
 Data File : PD064769.D
 Signal(s) : Signal #1: ECD1A.ch Signal #2: ECD2B.ch
 Acq On : 05 Aug 2021 14:16
 Operator : AR\AJ
 Sample : M3169-03MSD
 Misc :
 ALS Vial : 19 Sample Multiplier: 1

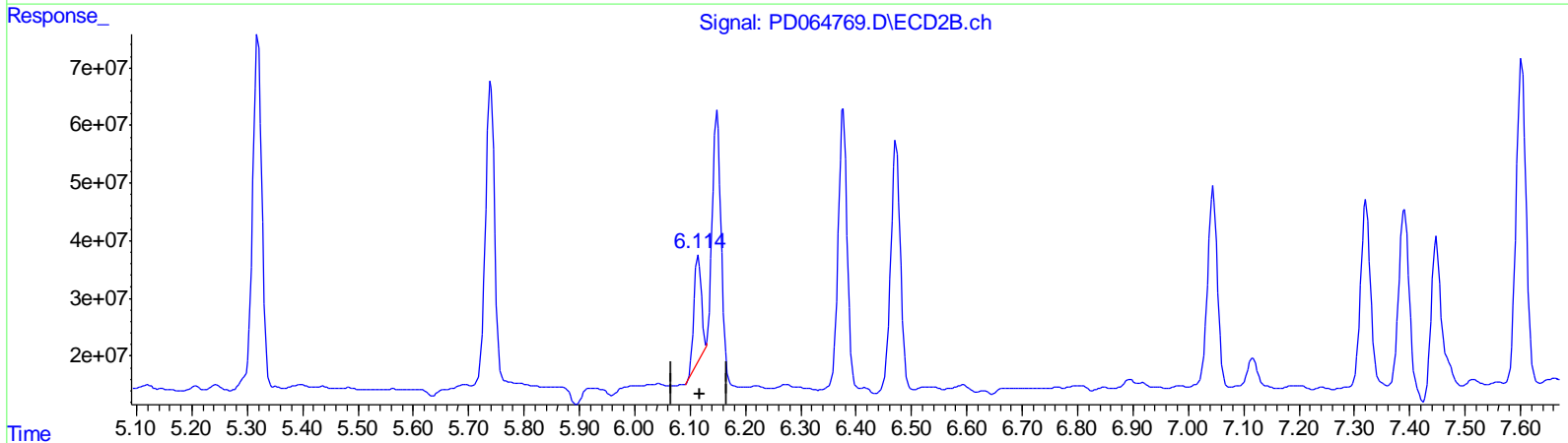
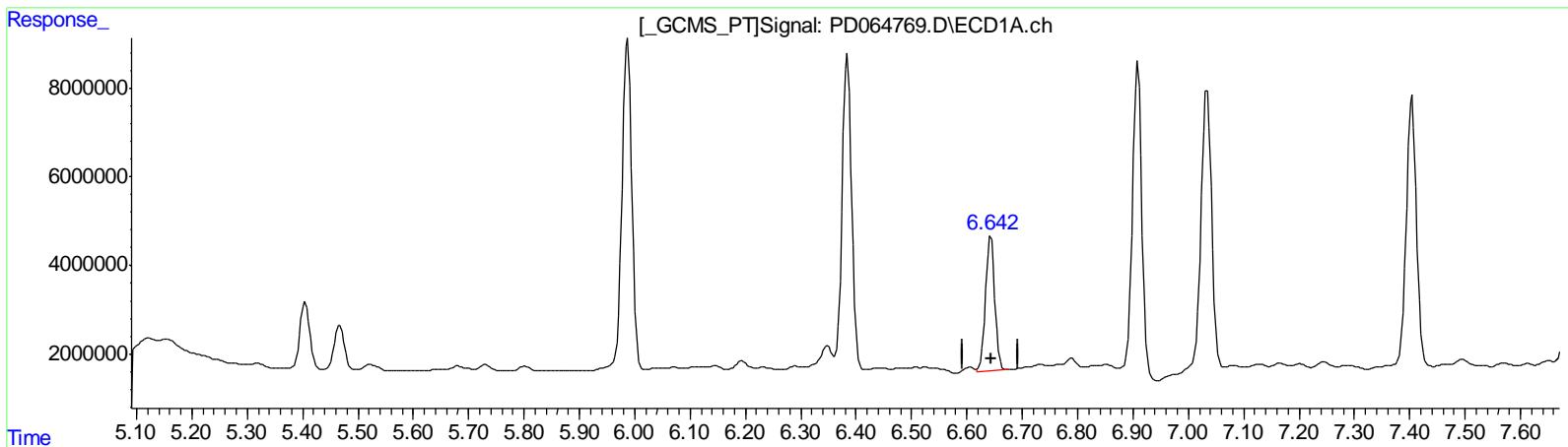
Instrument :
 ECD_D
 ClientSampled :
 C00A2MSD

Manual Integrations
 APPROVED

mohammad
 8/6/2021 3:07:50 PM

Integration File signal 1: autoint1.e
 Integration File signal 2: autoint2.e
 Quant Time: Aug 06 06:54:59 2021
 Quant Method : Z:\pestpcbsrv\HPCHEM1\ECD_D\Method\PD072721CLP.M
 Quant Title : GC Extractables
 QLast Update : Wed Jul 28 07:07:14 2021
 Response via : Initial Calibration
 Integrator: ChemStation

Volume Inj. : 1 µl
 Signal #1 Phase : ZB-MR2 Signal #2 Phase: ZB-MR1
 Signal #1 Info : 30M x 0.32mm x0.2 Signal #2 Info : 30M x 0.32mm x 0.50µm



QEdit

(6) beta-BHC (B)
 6.643min 46.811 ng/ml
 response 36520555

(6) beta-BHC #2 (B)
 6.115min 27.665 ng/ml
 response 167836994

(+) = Expected Retention Time

Data Path : Z:\pestpcbsrv\HPCHEM1\ECD_D\Data\PD080521\
 Data File : PD064769.D
 Signal(s) : Signal #1: ECD1A.ch Signal #2: ECD2B.ch
 Acq On : 05 Aug 2021 14:16
 Operator : AR\AJ
 Sample : M3169-03MSD
 Misc :
 ALS Vial : 19 Sample Multiplier: 1

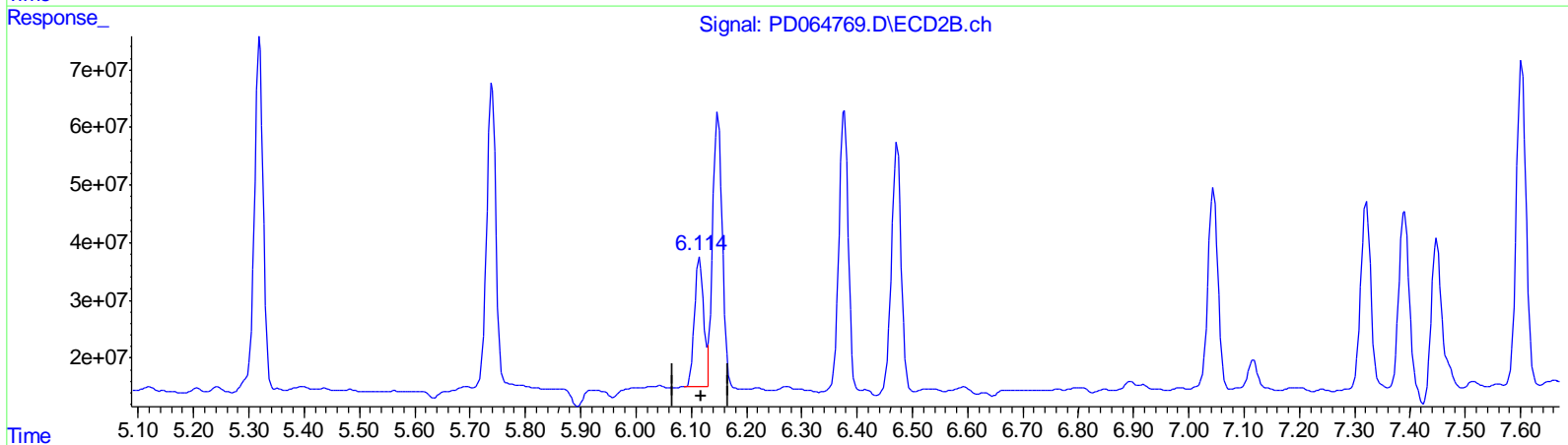
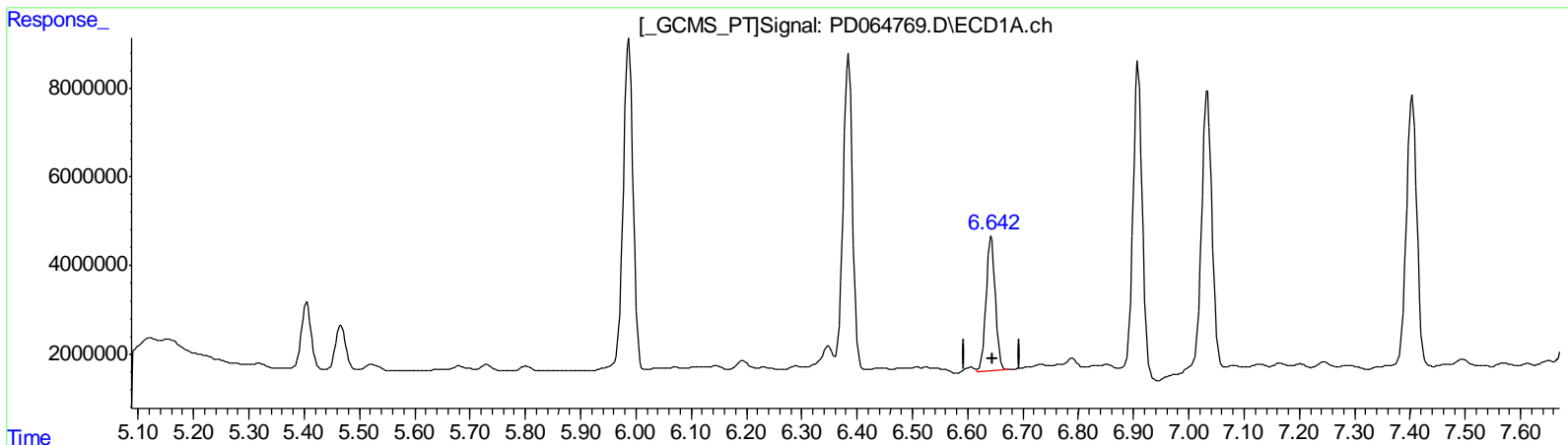
Instrument :
 ECD_D
 ClientSampled :
 C00A2MSD

Manual Integrations
 APPROVED

mohammad
 8/6/2021 3:07:50 PM

Integration File signal 1: autoint1.e
 Integration File signal 2: autoint2.e
 Quant Time: Aug 06 06:54:59 2021
 Quant Method : Z:\pestpcbsrv\HPCHEM1\ECD_D\Method\PD072721CLP.M
 Quant Title : GC Extractables
 QLast Update : Wed Jul 28 07:07:14 2021
 Response via : Initial Calibration
 Integrator: ChemStation

Volume Inj. : 1 µl
 Signal #1 Phase : ZB-MR2 Signal #2 Phase: ZB-MR1
 Signal #1 Info : 30M x 0.32mm x0.2 Signal #2 Info : 30M x 0.32mm x 0.50µm



QEdit

(6) beta-BHC (B)
 6.643min 46.811 ng/ml
 response 36520555

(6) beta-BHC #2 (B)
 6.114min 40.832 ng/ml m
 response 247720906

(+) = Expected Retention Time

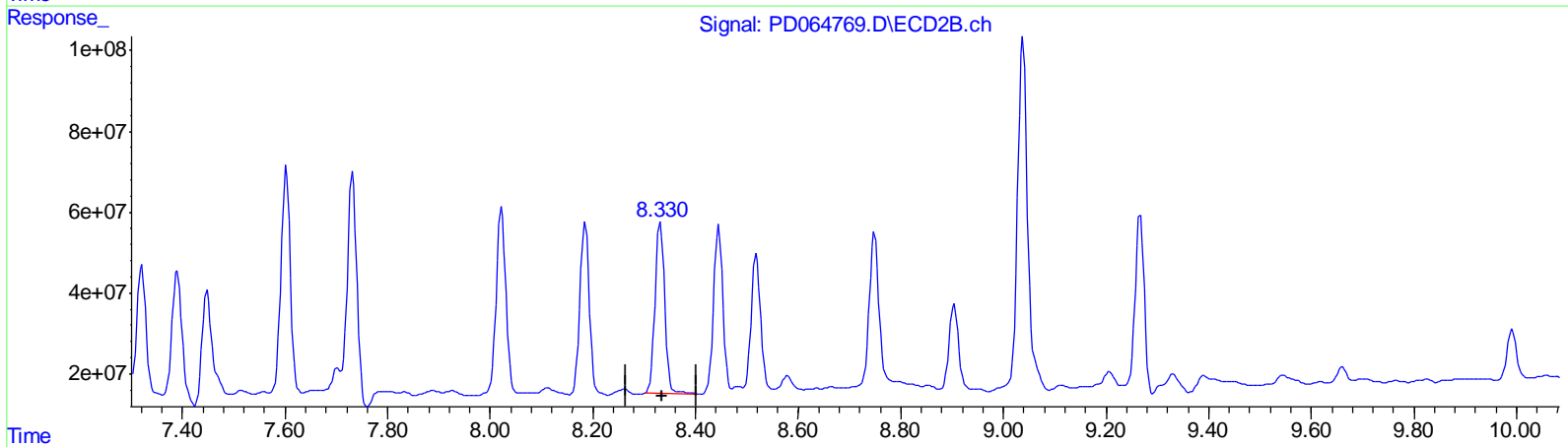
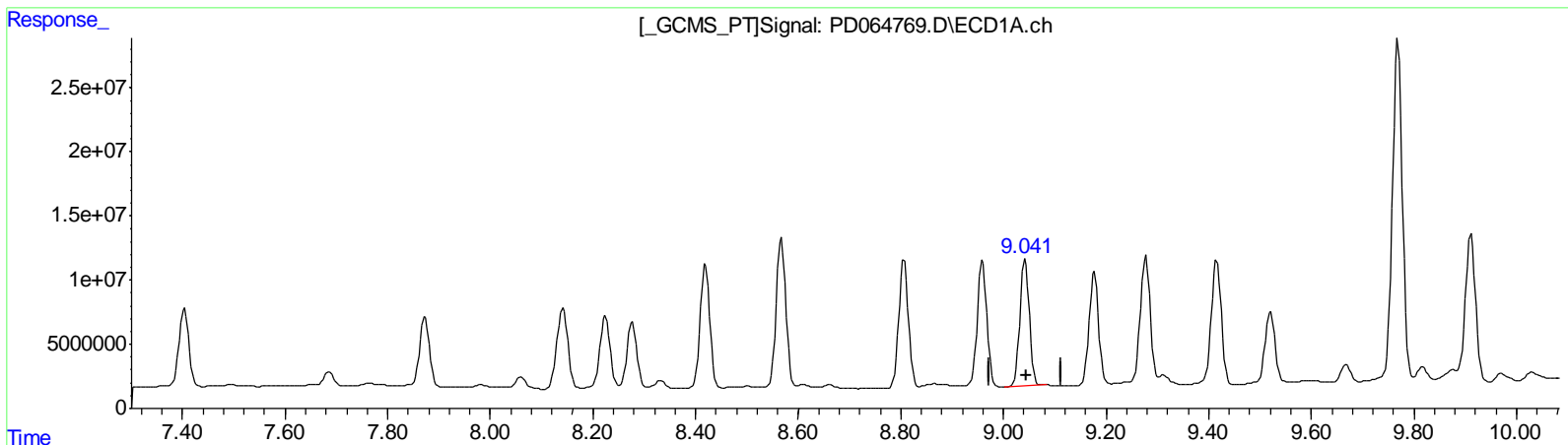
Data Path : Z:\pestpcbsrv\HPCHEM1\ECD_D\Data\PD080521\
 Data File : PD064769.D
 Signal(s) : Signal #1: ECD1A.ch Signal #2: ECD2B.ch
 Acq On : 05 Aug 2021 14:16
 Operator : AR\AJ
 Sample : M3169-03MSD
 Misc :
 ALS Vial : 19 Sample Multiplier: 1

Instrument :
 ECD_D
ClientSampled :
 C00A2MSD

Manual Integrations
APPROVED
 mohammad
 8/6/2021 3:07:50 PM

Integration File signal 1: autoint1.e
 Integration File signal 2: autoint2.e
 Quant Time: Aug 06 06:54:59 2021
 Quant Method : Z:\pestpcbsrv\HPCHEM1\ECD_D\Method\PD072721CLP.M
 Quant Title : GC Extractables
 QLast Update : Wed Jul 28 07:07:14 2021
 Response via : Initial Calibration
 Integrator: ChemStation

Volume Inj. : 1 µl
 Signal #1 Phase : ZB-MR2 Signal #2 Phase: ZB-MR1
 Signal #1 Info : 30M x 0.32mm x0.2 Signal #2 Info : 30M x 0.32mm x 0.50µm



QEdit

(15) Endosulfan II (B)
 9.042min 99.044 ng/ml
 response 128618944

(15) Endosulfan II #2 (B)
 8.332min 95.361 ng/ml
 response 550462920

(+) = Expected Retention Time

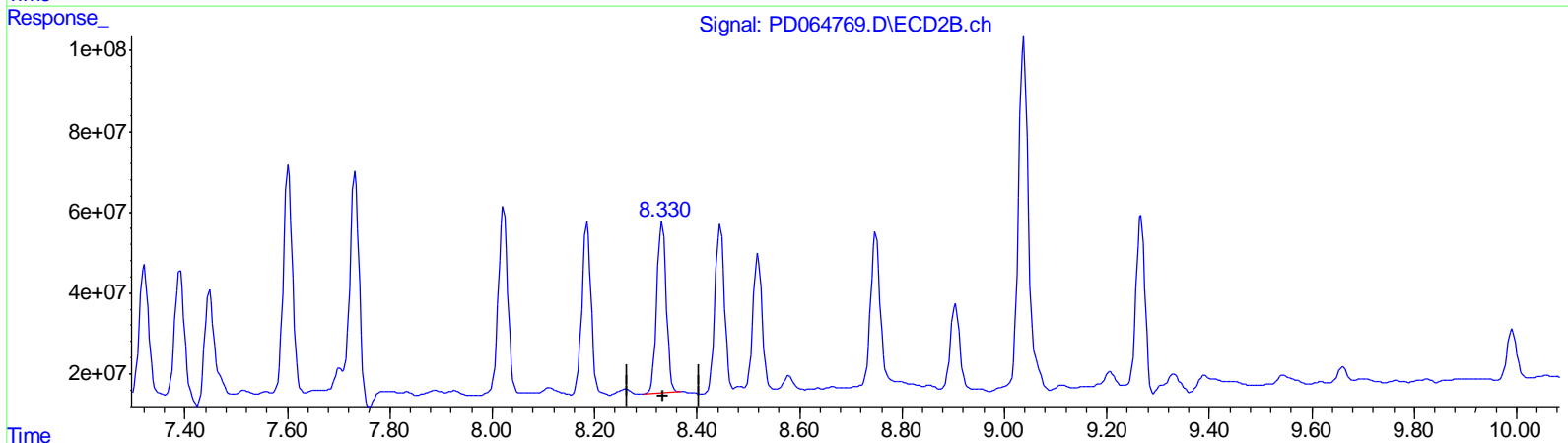
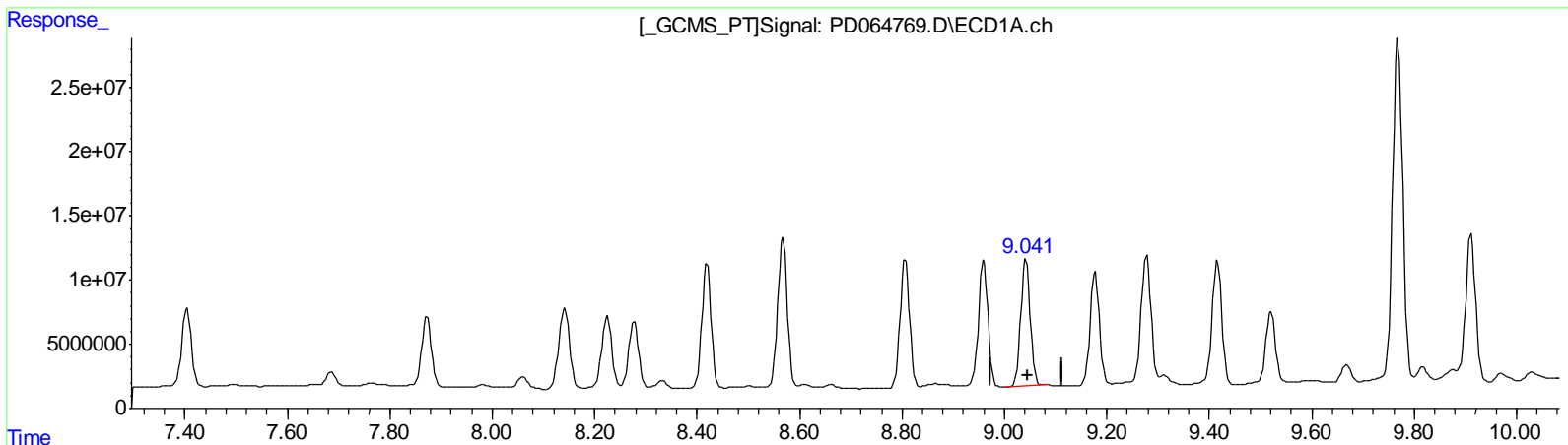
Data Path : Z:\pestpcbsrv\HPCHEM1\ECD_D\Data\PD080521\
 Data File : PD064769.D
 Signal(s) : Signal #1: ECD1A.ch Signal #2: ECD2B.ch
 Acq On : 05 Aug 2021 14:16
 Operator : AR\AJ
 Sample : M3169-03MSD
 Misc :
 ALS Vial : 19 Sample Multiplier: 1

Instrument :
 ECD_D
ClientSampled :
 C00A2MSD

Manual Integrations
APPROVED
 mohammad
 8/6/2021 3:07:50 PM

Integration File signal 1: autoint1.e
 Integration File signal 2: autoint2.e
 Quant Time: Aug 06 06:54:59 2021
 Quant Method : Z:\pestpcbsrv\HPCHEM1\ECD_D\Method\PD072721CLP.M
 Quant Title : GC Extractables
 QLast Update : Wed Jul 28 07:07:14 2021
 Response via : Initial Calibration
 Integrator: ChemStation

Volume Inj. : 1 µl
 Signal #1 Phase : ZB-MR2 Signal #2 Phase: ZB-MR1
 Signal #1 Info : 30M x 0.32mm x0.2 Signal #2 Info : 30M x 0.32mm x 0.50µm



QEdit

(15) Endosulfan II (B)
 9.042min 99.044 ng/ml
 response 128618944

(15) Endosulfan II #2 (B)
 8.330min 92.316 ng/ml m
 response 532888305

(+) = Expected Retention Time

Data Path : Z:\pestpcbsrv\HPCHEM1\ECD_D\Data\PD080521\
 Data File : PD064769.D
 Signal(s) : Signal #1: ECD1A.ch Signal #2: ECD2B.ch
 Acq On : 05 Aug 2021 14:16
 Operator : AR\AJ
 Sample : M3169-03MSD
 Misc :
 ALS Vial : 19 Sample Multiplier: 1

Instrument :
 ECD_D
 ClientSampleID :
 C00A2MSD

Manual Integrations
APPROVED
 mohammad
 8/6/2021 3:07:50 PM

Integration File signal 1: autoint1.e
 Integration File signal 2: autoint2.e
 Quant Time: Aug 06 06:54:59 2021
 Quant Method : Z:\pestpcbsrv\HPCHEM1\ECD_D\Method\PD072721CLP.M
 Quant Title : GC Extractables
 QLast Update : Wed Jul 28 07:07:14 2021
 Response via : Initial Calibration
 Integrator: ChemStation

Volume Inj. : 1 µl
 Signal #1 Phase : ZB-MR2 Signal #2 Phase: ZB-MR1
 Signal #1 Info : 30M x 0.32mm x0.2 Signal #2 Info : 30M x 0.32mm x 0.50µm

Compound	RT#1	RT#2	Resp#1	Resp#2	ng/ml	ng/ml
System Monitoring Compounds						
1) SA Tetrachlo...	5.405	4.618	18949379	178.0E6	15.885	19.478
27) SA Decachlor...	11.304	10.359	30189282	149.9E6	22.933	25.204
Target Compounds						
2) A alpha-BHC	5.987	5.320	89888700	696.0E6	55.177	56.471
3) MA gamma-BHC...	6.385	5.740	85461983	601.3E6	54.491	52.732
4) MA Heptachlor	7.034	6.147	82674947	586.7E6	49.194	51.743m
5) MB Aldrin	7.403	6.472	80699733	539.5E6	51.233m	51.284
6) B beta-BHC	6.643	6.114	36520555	247.7E6	46.811	40.832m
7) B delta-BHC	6.909	6.377	86250679	562.4E6	49.565	51.767
8) B Heptachlo...	7.873	7.045	77282955	436.5E6	45.014	47.156
9) A Endosulfan I	8.277	7.448	63129756	385.5E6	44.784	50.130
10) B trans-Chl...	8.142	7.321	94066496	443.1E6	58.701	48.853
11) B cis-Chlor...	8.225	7.390	71518344	456.0E6	45.901	51.257
12) B 4,4'-DDE	8.420	7.603	124.8E6	690.8E6	86.609	91.560
13) MA Dieldrin	8.568	7.732	149.5E6	734.7E6	100.272	91.479
14) MA Endrin	8.807	8.022	132.4E6	612.0E6	103.434	106.544
15) B Endosulfa...	9.042	8.330	128.6E6	532.9E6	99.044	92.316m
16) A 4,4'-DDD	8.960	8.185	131.6E6	536.2E6	107.244	93.090
17) MA 4,4'-DDT	9.278	8.445	129.4E6	505.7E6	99.149	91.863
18) B Endrin al...	9.177	8.519	112.1E6	412.4E6	98.952	83.566
19) B Endosulfa...	9.416	8.749	130.4E6	488.0E6	94.588	90.529
20) A Methoxychlor	9.769	9.038	353.5E6	1189.9E6	494.059	464.688
21) B Endrin ke...	9.911	9.267	147.9E6	510.3E6	97.767	85.065

AJ
 08/10/21

(f)=RT Delta > 1/2 Window (#)=Amounts differ by > 25% (m)=manual int.