

Data Path : Z:\pestpcbsrv\HPCHEM1\ECD_D\Data\PD080521\
 Data File : PD064768.D
 Signal(s) : Signal #1: ECD1A.ch Signal #2: ECD2B.ch
 Acq On : 05 Aug 2021 14:00
 Operator : AR\AJ
 Sample : M3169-02MS
 Misc :
 ALS Vial : 18 Sample Multiplier: 1

Instrument :
 ECD_D
ClientSampled :
 C00A2MS

Manual Integrations
APPROVED
 mohammad
 8/6/2021 3:07:47 PM

Integration File signal 1: autoint1.e
 Integration File signal 2: autoint2.e
 Quant Time: Aug 06 06:52:10 2021
 Quant Method : Z:\pestpcbsrv\HPCHEM1\ECD_D\Method\PD072721CLP.M
 Quant Title : GC Extractables
 QLast Update : Wed Jul 28 07:07:14 2021
 Response via : Initial Calibration
 Integrator: ChemStation

Volume Inj. : 1 µl
 Signal #1 Phase : ZB-MR2 Signal #2 Phase: ZB-MR1
 Signal #1 Info : 30M x 0.32mm x0.2 Signal #2 Info : 30M x 0.32mm x 0.50µm

	Compound	RT#1	RT#2	Resp#1	Resp#2	ng/ml	ng/ml

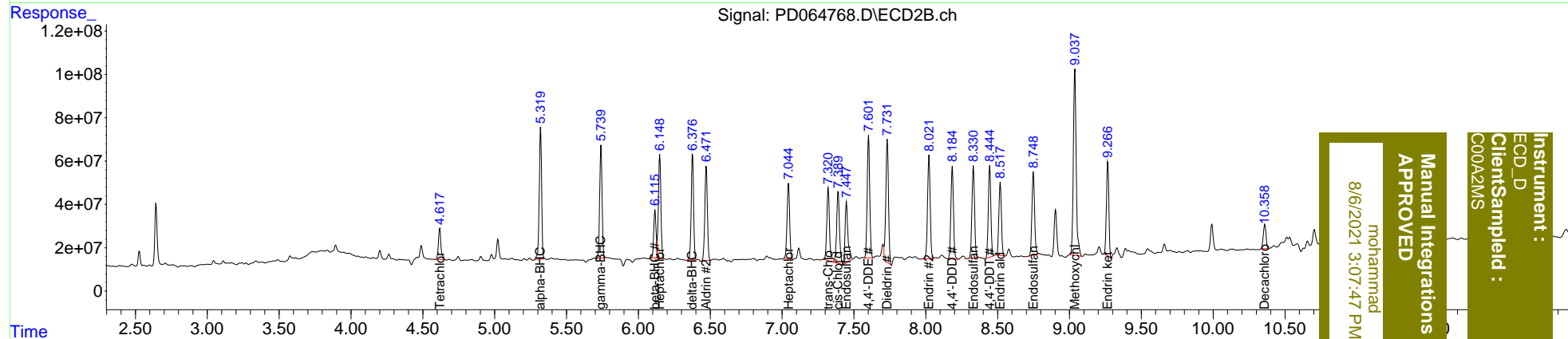
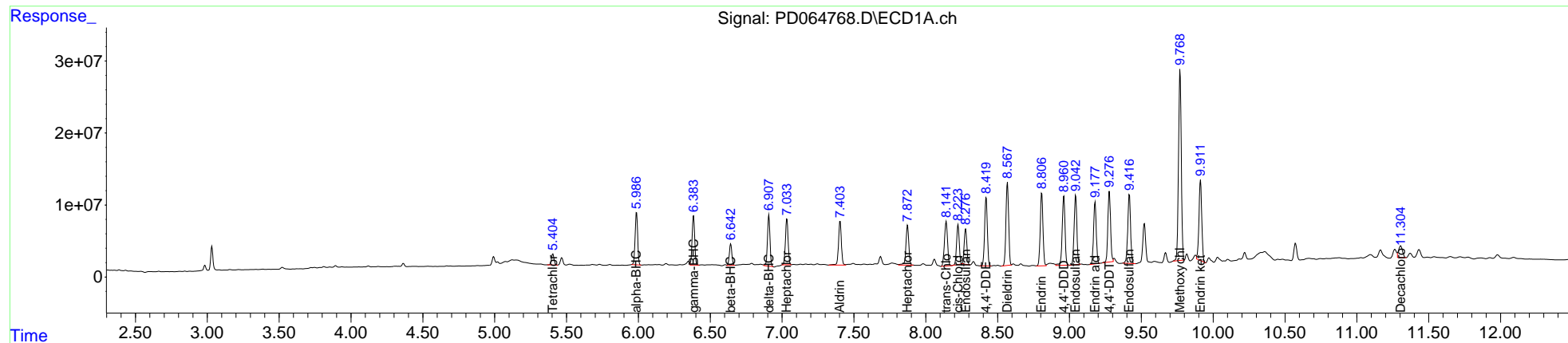
System Monitoring Compounds							
1)	SA Tetrachlo...	5.405	4.618	18820471	176.2E6	15.777	19.277
2)	SA Decachlor...	11.305	10.360	30861562	152.0E6	23.444	25.553
Target Compounds							
2)	A alpha-BHC	5.987	5.320	89790802	694.1E6	55.117	56.316
3)	MA gamma-BHC...	6.384	5.740	85164993	600.6E6	54.302	52.665
4)	MA Heptachlor	7.034	6.148	82481984	577.3E6	49.079	50.917m
5)	MB Aldrin	7.404	6.473	84216579	538.3E6	53.465	51.177
6)	B beta-BHC	6.643	6.115	36514504	248.6E6	46.803	40.985m
7)	B delta-BHC	6.908	6.377	85753248	560.5E6	49.279	51.596
8)	B Heptachlo...	7.873	7.045	76089295	436.4E6	44.319	47.143
9)	A Endosulfan I	8.277	7.448	62850540	384.4E6	44.586	49.989
10)	B trans-Chl...	8.142	7.321	92893663	444.2E6	57.969	48.976
11)	B cis-Chlor...	8.225	7.391	70842378	456.0E6	45.467	51.261
12)	B 4,4'-DDE	8.420	7.602	125.2E6	690.4E6	86.874	91.499
13)	MA Dieldrin	8.569	7.733	149.5E6	732.6E6	100.264	91.214
14)	MA Endrin	8.807	8.023	132.9E6	609.0E6	103.794	106.007
15)	B Endosulfa...	9.043	8.330	125.9E6	539.1E6	96.977	93.385m
16)	A 4,4'-DDD	8.961	8.185	131.3E6	535.6E6	106.995	93.002
17)	MA 4,4'-DDT	9.277	8.444	128.8E6	515.1E6	98.687	93.570m
18)	B Endrin al...	9.178	8.519	110.8E6	416.7E6	97.783	84.428
19)	B Endosulfa...	9.417	8.749	130.3E6	488.3E6	94.551	90.589
20)	A Methoxychlor	9.770	9.038	353.2E6	1183.0E6	493.576	462.016
21)	B Endrin ke...	9.912	9.267	150.3E6	507.1E6	99.325	84.534

(f)=RT Delta > 1/2 Window (#)=Amounts differ by > 25% (m)=manual int.

Data Path : Z:\pestpcbsrv\HPCHEM1\ECD_D\Data\PD080521\
 Data File : PD064768.D
 Signal(s) : Signal #1: ECD1A.ch Signal #2: ECD2B.ch
 Acq On : 05 Aug 2021 14:00
 Operator : AR\AJ
 Sample : M3169-02MS
 Misc :
 ALS Vial : 18 Sample Multiplier: 1

Integration File signal 1: autoint1.e
 Integration File signal 2: autoint2.e
 Quant Time: Aug 06 06:52:10 2021
 Quant Method : Z:\pestpcbsrv\HPCHEM1\ECD_D\Method\PD072721CLP.M
 Quant Title : GC Extractables
 QLast Update : Wed Jul 28 07:07:14 2021
 Response via : Initial Calibration
 Integrator: ChemStation

Volume Inj. : 1 µl
 Signal #1 Phase : ZB-MR2 Signal #2 Phase: ZB-MR1
 Signal #1 Info : 30M x 0.32mm x0.2 Signal #2 Info : 30M x 0.32mm x 0.50µm



Instrument : ECD_D
 Client Sample Id : C0042MS
 Manual Integrations APPROVED
 mohammed
 8/6/2021 3:07:47 PM