

Data Path : Z:\pestpcbsrv\HPCHEM1\ECD\_D\Data\PD080522\  
 Data File : PD071365.D  
 Signal(s) : Signal #1: ECD1A.ch Signal #2: ECD2B.ch  
 Acq On : 05 Aug 2022 14:29  
 Operator : AR\AJ  
 Sample : PB146783BL  
 Misc :  
 ALS Vial : 11 Sample Multiplier: 1

Instrument :  
 ECD\_D  
 ClientSampleId :

Integration File signal 1: autoint1.e  
 Integration File signal 2: autoint2.e  
 Quant Time: Aug 05 22:35:09 2022  
 Quant Method : Z:\pestpcbsrv\HPCHEM1\ECD\_D\Method\PD072622.M  
 Quant Title : GC Extractables  
 QLast Update : Tue Jul 26 03:39:07 2022  
 Response via : Initial Calibration  
 Integrator: ChemStation

Volume Inj. : 2 µl  
 Signal #1 Phase : ZB-MR2 Signal #2 Phase: ZB-MR1  
 Signal #1 Info : 30M x 0.32mm x0.2 Signal #2 Info : 30M x 0.32mm x 0.50µm

	Compound	RT#1	RT#2	Resp#1	Resp#2	ng/ml	ng/ml
-----							
System Monitoring Compounds							
1)	SA Tetrachlo...	2.815	3.575	43449156	488.2E6	15.321	17.343
28)	SA Decachlor...	8.015	9.104	46976698	196.1E6	16.938	18.939
Target Compounds							
2)	A alpha-BHC	3.313	4.034	386975	3150368	0.092	0.085
4)	MA Heptachlor	0.000	4.976f	0	298528	N.D.	0.014 #
5)	MB Aldrin	0.000	5.293	0	567395	N.D.	0.032 #
6)	B beta-BHC	0.000	4.581	0	1362023	N.D.	0.115 #
8)	B Heptachlo...	0.000	5.726	0	4616144	N.D.	0.353 #
9)	A Endosulfan I	0.000	6.099f	0	397324	N.D.	0.029 #
10)	B gamma-Chl...	0.000	5.996	0	326783	N.D.	0.022 #
11)	B alpha-Chl...	0.000	6.058	0	965882	N.D.	0.067 #
12)	B 4,4'-DDE	0.000	6.236	0	25604	N.D.	0.002 #
13)	MA Dieldrin	0.000	6.391	0	1443019	N.D.	0.098 #
14)	MA Endrin	5.731	0.000	256703	0	0.081	N.D. #
15)	B Endosulfa...	6.002	6.849	116694	1380059	0.039	0.111 #
16)	A 4,4'-DDD	0.000	6.782f	0	176578	N.D.	0.015 #
17)	MA 4,4'-DDT	0.000	7.085f	0	315459	N.D.	0.024 #
18)	B Endrin al...	0.000	6.969	0	389843	N.D.	0.040 #
19)	B Endosulfa...	0.000	7.221	0	662905	N.D.	0.056 #
21)	B Endrin ke...	6.959f	7.716	113845	1442954	0.035	0.107 #
22)	Mirex	0.000	8.192f	0	1309507	N.D.	0.152 #
24)	Chlordane-2	0.000	5.264	0	280046	N.D.	0.468 #
25)	Chlordane-3	0.000	5.996	0	326783	N.D.	0.176 #
26)	Chlordane-4	0.000	6.058	0	965882	N.D.	0.443 #
27)	Chlordane-5	6.002f	6.943f	116694	407768	0.965	0.902

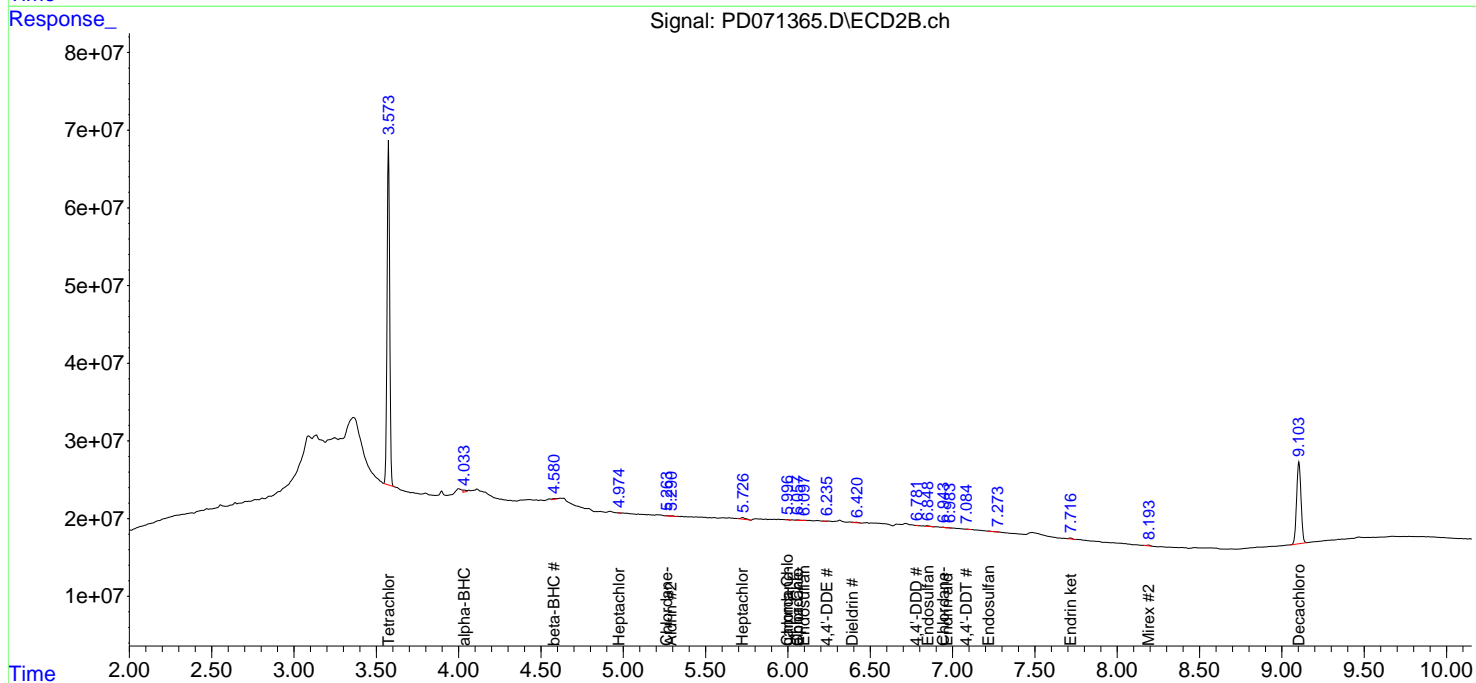
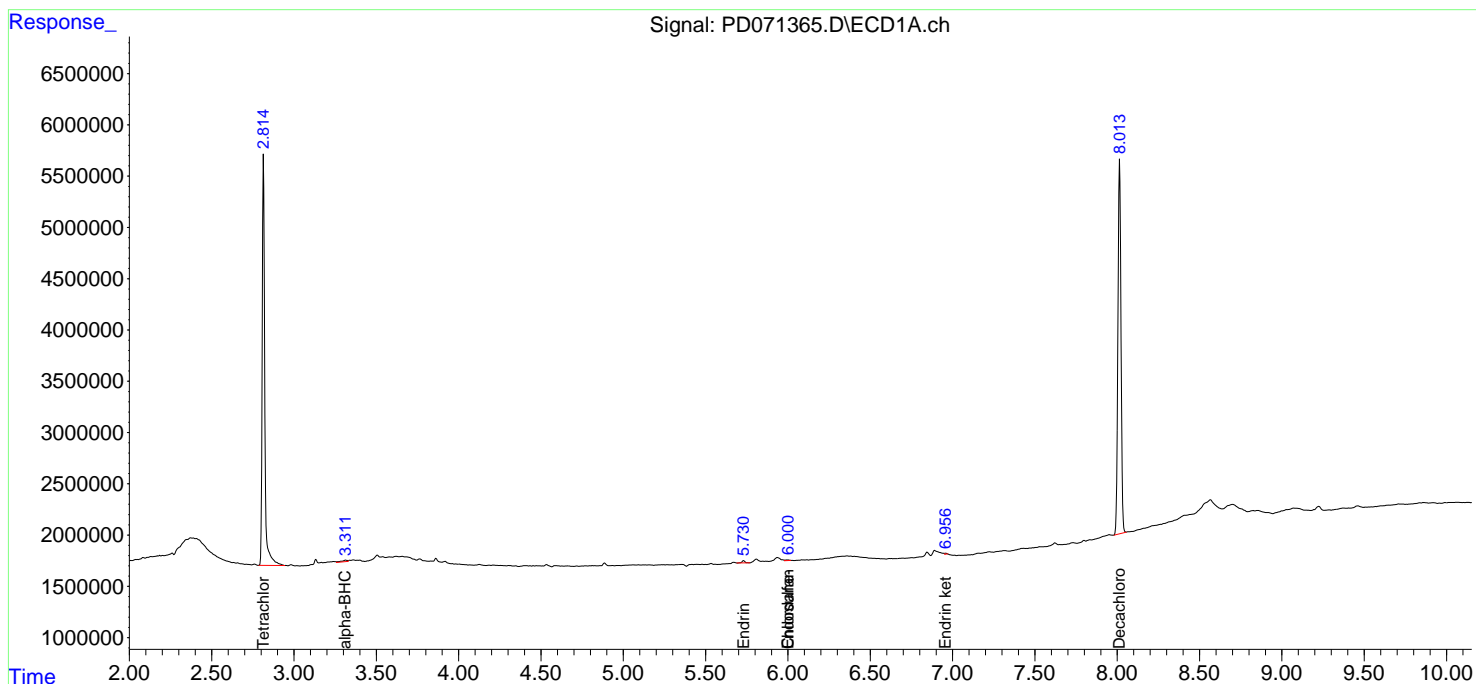
(f)=RT Delta > 1/2 Window (#)=Amounts differ by > 25% (m)=manual int.

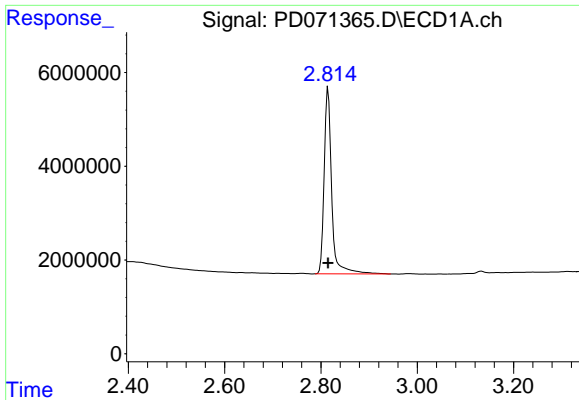
Data Path : Z:\pestpcbsrv\HPCHEM1\ECD\_D\Data\PD080522\  
 Data File : PD071365.D  
 Signal(s) : Signal #1: ECD1A.ch Signal #2: ECD2B.ch  
 Acq On : 05 Aug 2022 14:29  
 Operator : AR\AJ  
 Sample : PB146783BL  
 Misc :  
 ALS Vial : 11 Sample Multiplier: 1

Instrument :  
 ECD\_D  
 ClientSampleId :

Integration File signal 1: autoint1.e  
 Integration File signal 2: autoint2.e  
 Quant Time: Aug 05 22:35:09 2022  
 Quant Method : Z:\pestpcbsrv\HPCHEM1\ECD\_D\Method\PD072622.M  
 Quant Title : GC Extractables  
 QLast Update : Tue Jul 26 03:39:07 2022  
 Response via : Initial Calibration  
 Integrator: ChemStation

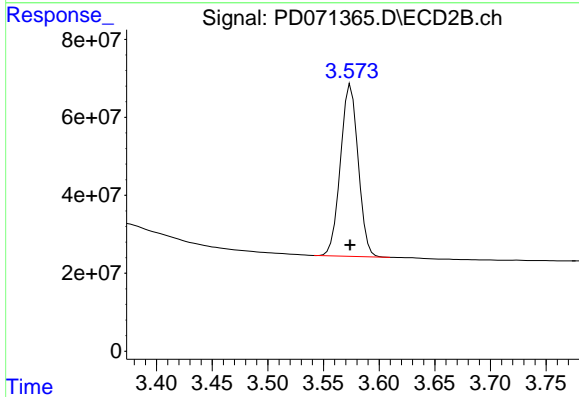
Volume Inj. : 2 µl  
 Signal #1 Phase : ZB-MR2 Signal #2 Phase: ZB-MR1  
 Signal #1 Info : 30M x 0.32mm x0.2 Signal #2 Info : 30M x 0.32mm x 0.50µm



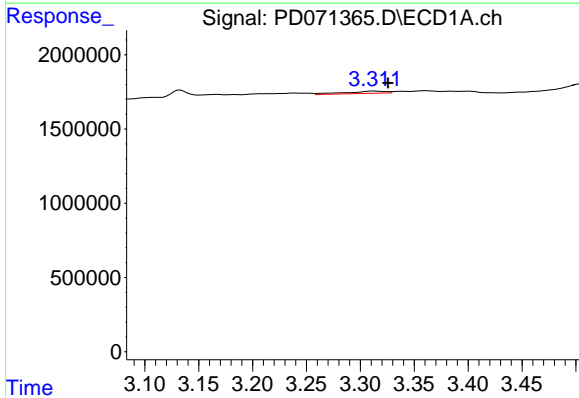


#1 Tetrachloro-m-xylene  
 R.T.: 2.815 min  
 Delta R.T.: 0.000 min  
 Response: 43449156  
 Conc: 15.32 ng/ml

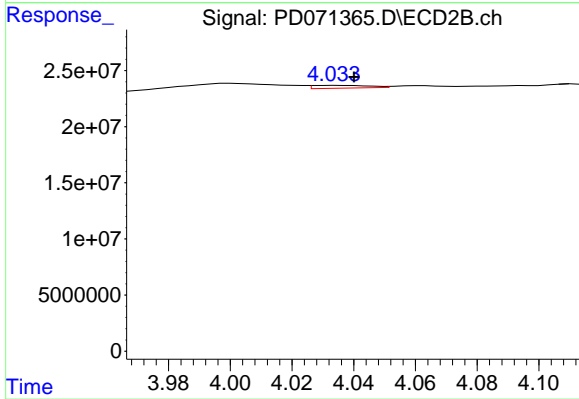
Instrument :  
 ECD\_D  
 ClientSampleId :



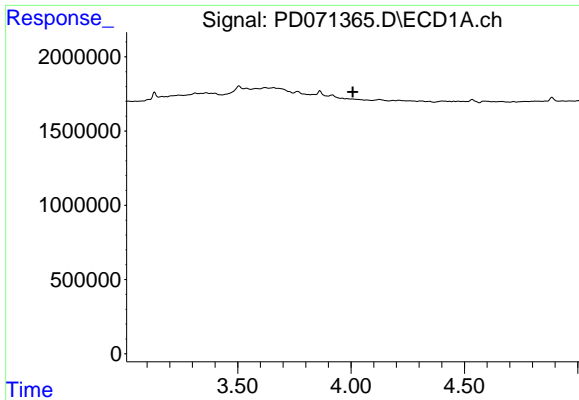
#1 Tetrachloro-m-xylene  
 R.T.: 3.575 min  
 Delta R.T.: 0.000 min  
 Response: 488199659  
 Conc: 17.34 ng/ml



#2 alpha-BHC  
 R.T.: 3.313 min  
 Delta R.T.: -0.013 min  
 Response: 386975  
 Conc: 0.09 ng/ml



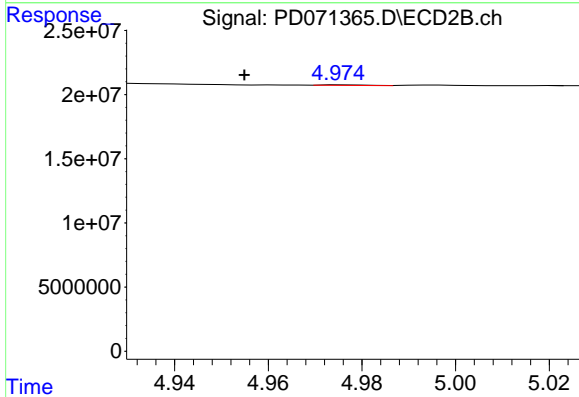
#2 alpha-BHC  
 R.T.: 4.034 min  
 Delta R.T.: -0.006 min  
 Response: 3150368  
 Conc: 0.08 ng/ml



#4 Heptachlor

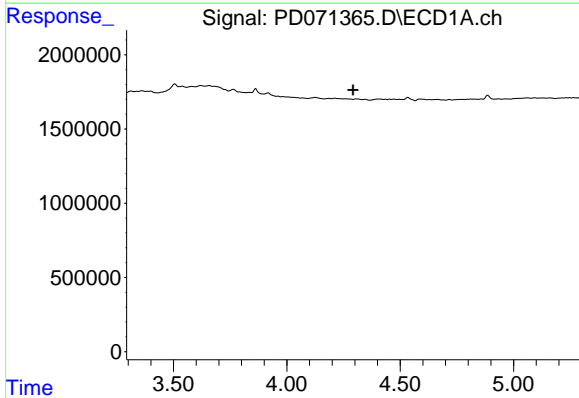
R.T.: 0.000 min  
 Exp R.T.: 4.008 min  
 Response: 0  
 Conc: N.D.

Instrument :  
 ECD\_D  
 ClientSampleId :



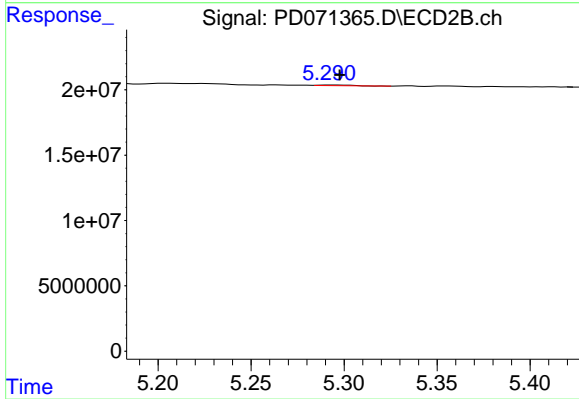
#4 Heptachlor

R.T.: 4.976 min  
 Delta R.T.: 0.021 min  
 Response: 298528  
 Conc: 0.01 ng/ml



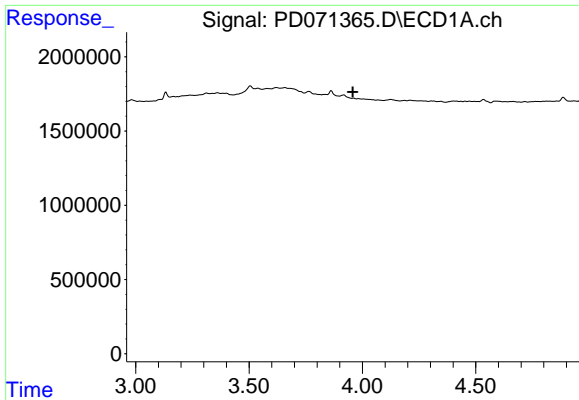
#5 Aldrin

R.T.: 0.000 min  
 Exp R.T.: 4.292 min  
 Response: 0  
 Conc: N.D.



#5 Aldrin

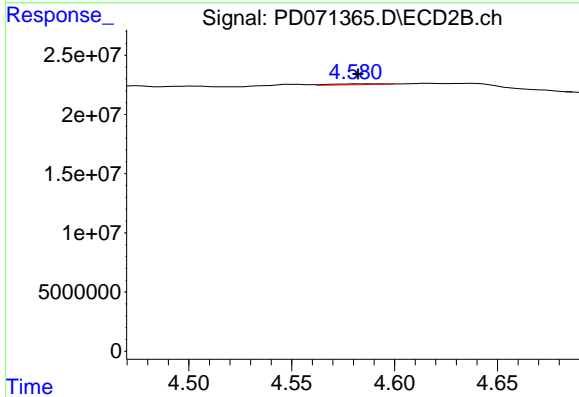
R.T.: 5.293 min  
 Delta R.T.: -0.005 min  
 Response: 567395  
 Conc: 0.03 ng/ml



#6 beta-BHC

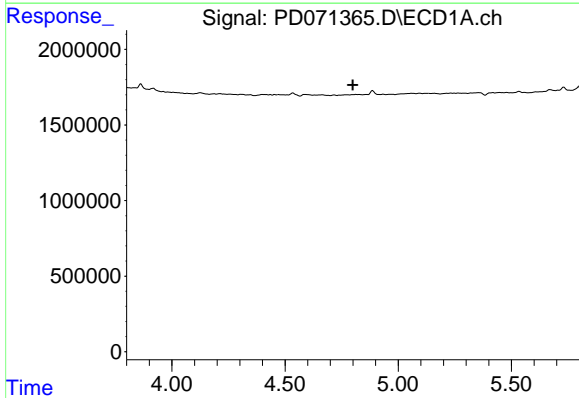
R.T.: 0.000 min  
 Exp R.T.: 3.958 min  
 Response: 0  
 Conc: N.D.

Instrument :  
 ECD\_D  
 ClientSampleId :



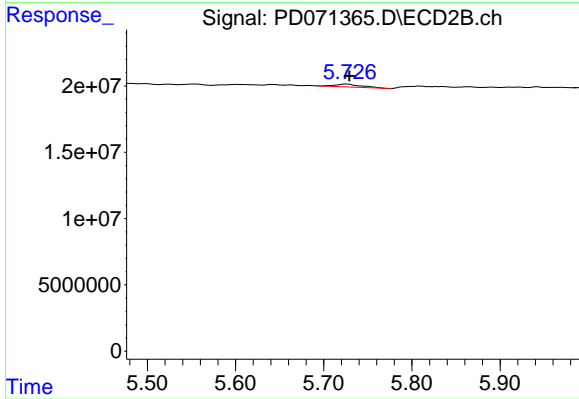
#6 beta-BHC

R.T.: 4.581 min  
 Delta R.T.: -0.001 min  
 Response: 1362023  
 Conc: 0.11 ng/ml



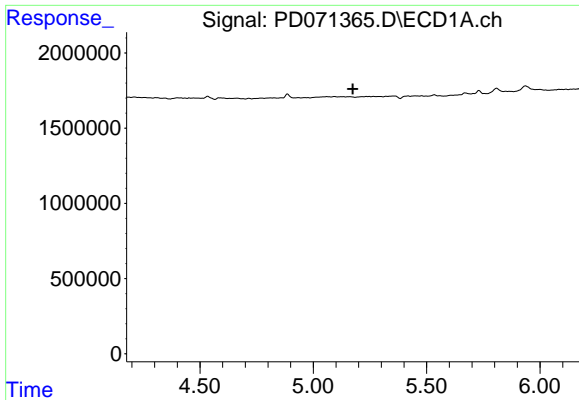
#8 Heptachlor epoxide

R.T.: 0.000 min  
 Exp R.T.: 4.800 min  
 Response: 0  
 Conc: N.D.



#8 Heptachlor epoxide

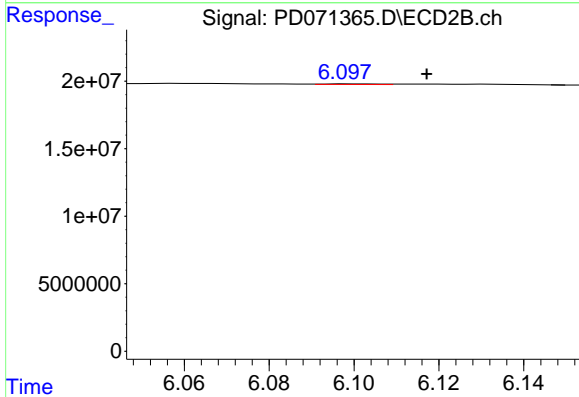
R.T.: 5.726 min  
 Delta R.T.: -0.003 min  
 Response: 4616144  
 Conc: 0.35 ng/ml



#9 Endosulfan I

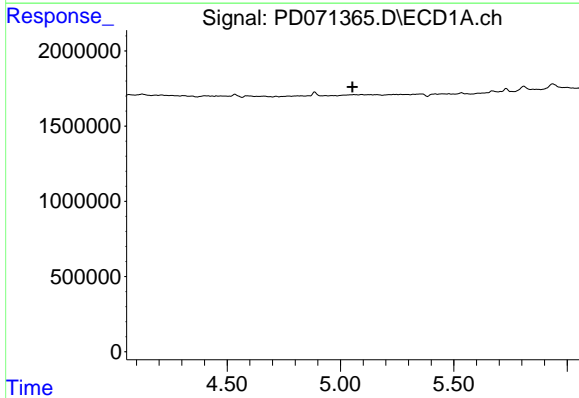
R.T.: 0.000 min  
 Exp R.T.: 5.174 min  
 Response: 0  
 Conc: N.D.

Instrument :  
 ECD\_D  
 ClientSampleId :



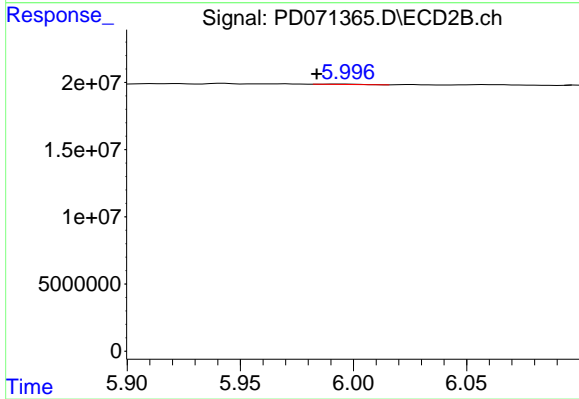
#9 Endosulfan I

R.T.: 6.099 min  
 Delta R.T.: -0.018 min  
 Response: 397324  
 Conc: 0.03 ng/ml



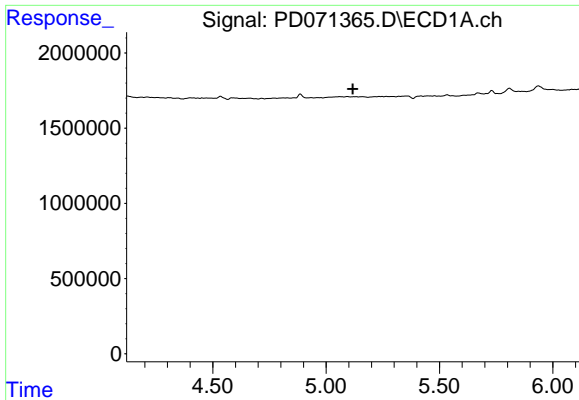
#10 gamma-Chlordane

R.T.: 0.000 min  
 Exp R.T.: 5.053 min  
 Response: 0  
 Conc: N.D.



#10 gamma-Chlordane

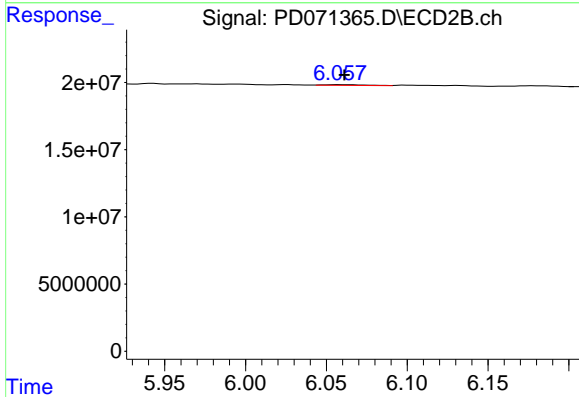
R.T.: 5.996 min  
 Delta R.T.: 0.012 min  
 Response: 326783  
 Conc: 0.02 ng/ml



#11 alpha-Chlordane

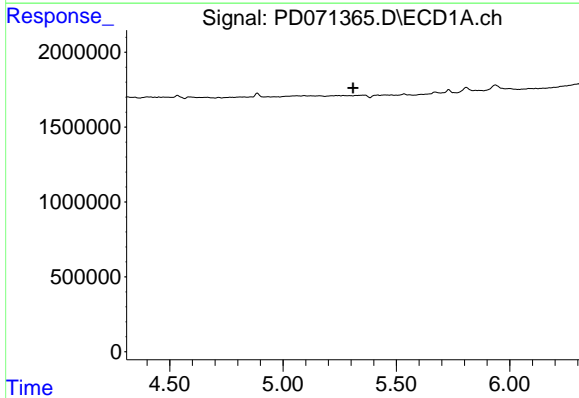
R.T.: 0.000 min  
 Exp R.T. : 5.118 min  
 Response: 0  
 Conc: N.D.

Instrument :  
 ECD\_D  
 ClientSampleId :



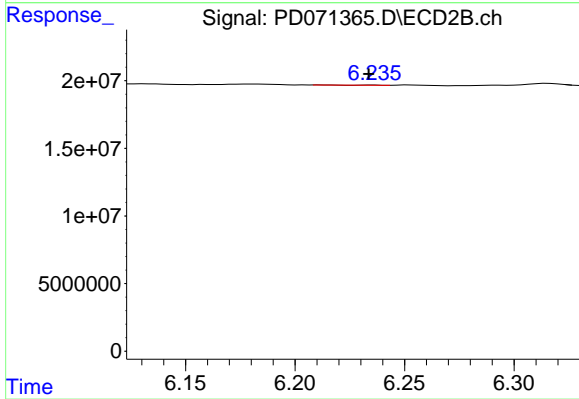
#11 alpha-Chlordane

R.T.: 6.058 min  
 Delta R.T.: -0.003 min  
 Response: 965882  
 Conc: 0.07 ng/ml



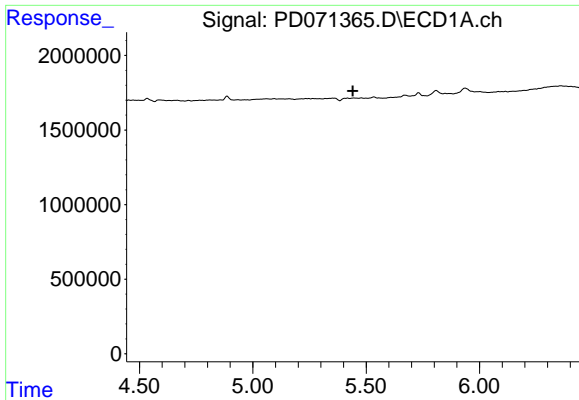
#12 4,4'-DDE

R.T.: 0.000 min  
 Exp R.T. : 5.309 min  
 Response: 0  
 Conc: N.D.



#12 4,4'-DDE

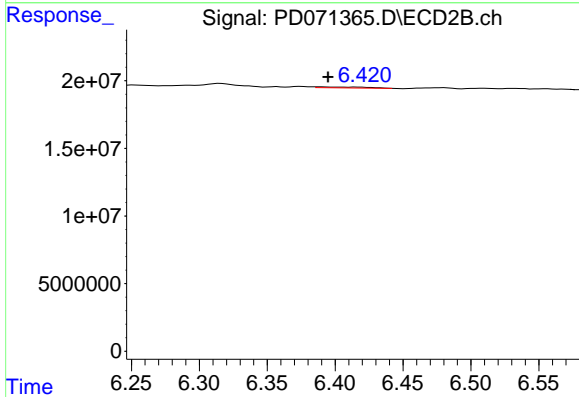
R.T.: 6.236 min  
 Delta R.T.: 0.002 min  
 Response: 25604  
 Conc: 0.00 ng/ml



#13 Dieldrin

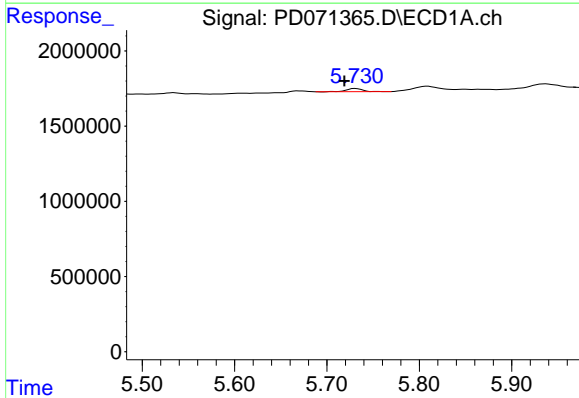
R.T.: 0.000 min  
 Exp R.T.: 5.441 min  
 Response: 0  
 Conc: N.D.

Instrument :  
 ECD\_D  
 ClientSampleId :



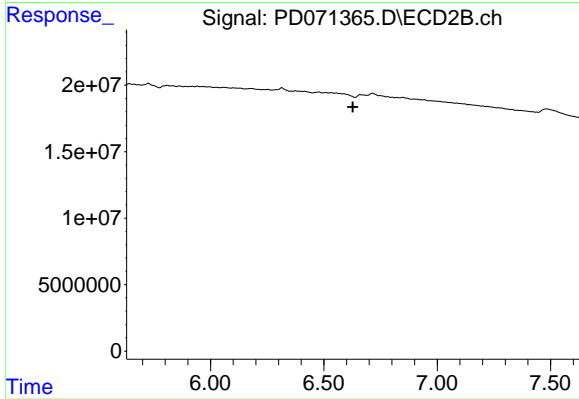
#13 Dieldrin

R.T.: 6.391 min  
 Delta R.T.: -0.004 min  
 Response: 1443019  
 Conc: 0.10 ng/ml



#14 Endrin

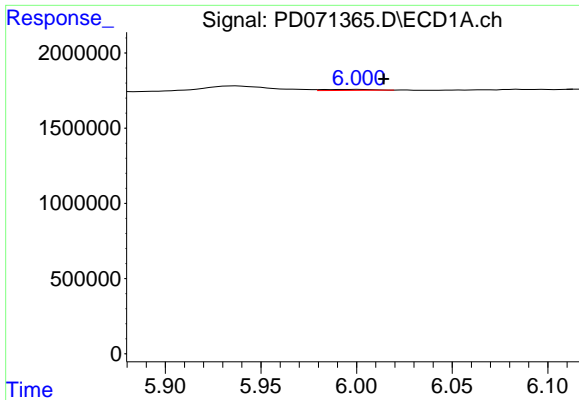
R.T.: 5.731 min  
 Delta R.T.: 0.012 min  
 Response: 256703  
 Conc: 0.08 ng/ml



#14 Endrin

R.T.: 0.000 min  
 Exp R.T.: 6.628 min  
 Response: 0  
 Conc: N.D.

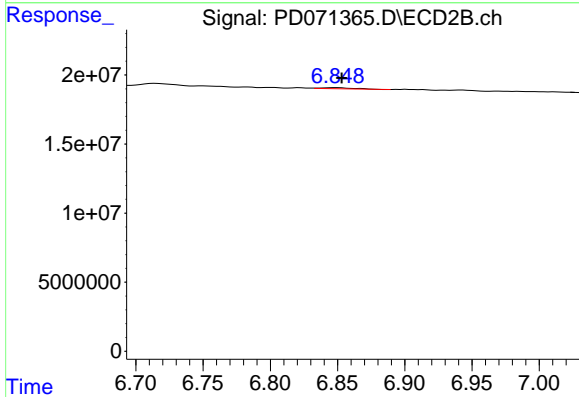




#15 Endosulfan II

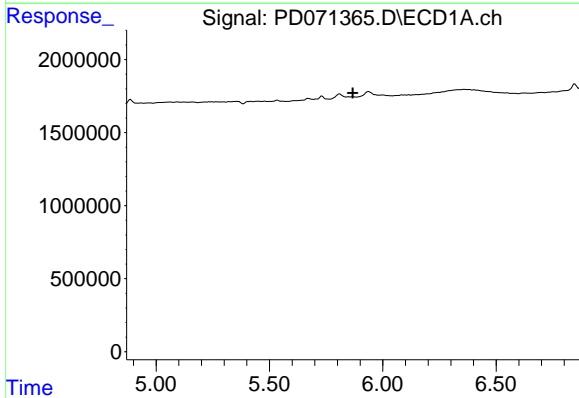
R.T.: 6.002 min  
 Delta R.T.: -0.012 min  
 Response: 116694  
 Conc: 0.04 ng/ml

Instrument :  
 ECD\_D  
 ClientSampleId :



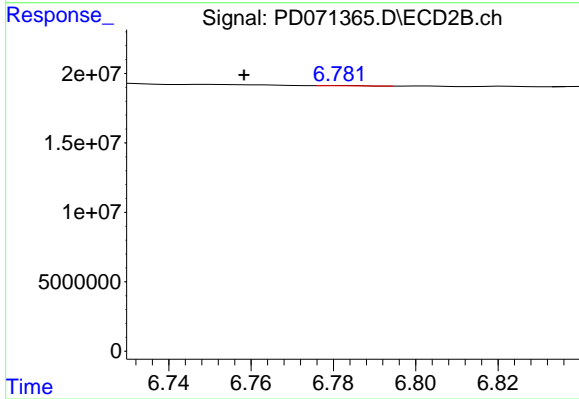
#15 Endosulfan II

R.T.: 6.849 min  
 Delta R.T.: -0.004 min  
 Response: 1380059  
 Conc: 0.11 ng/ml



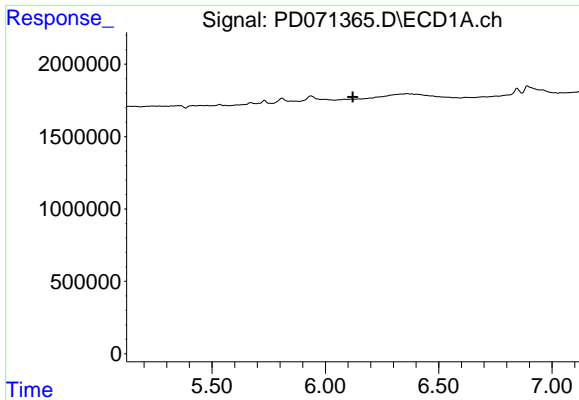
#16 4,4'-DDD

R.T.: 0.000 min  
 Exp R.T. : 5.868 min  
 Response: 0  
 Conc: N.D.



#16 4,4'-DDD

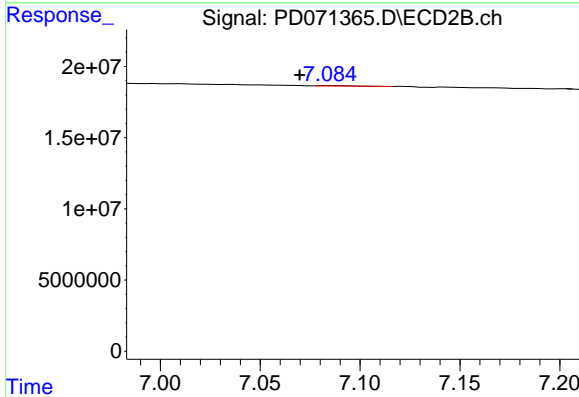
R.T.: 6.782 min  
 Delta R.T.: 0.024 min  
 Response: 176578  
 Conc: 0.01 ng/ml



#17 4,4'-DDT

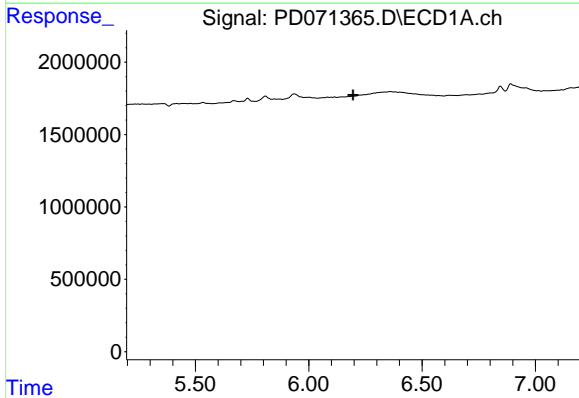
R.T.: 0.000 min  
 Exp R.T. : 6.121 min  
 Response: 0  
 Conc: N.D.

Instrument :  
 ECD\_D  
 ClientSampleId :



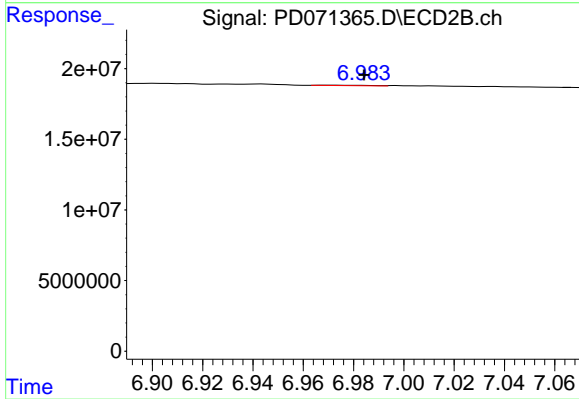
#17 4,4'-DDT

R.T.: 7.085 min  
 Delta R.T.: 0.015 min  
 Response: 315459  
 Conc: 0.02 ng/ml



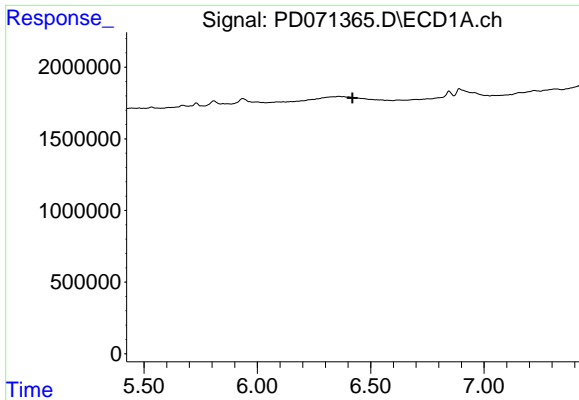
#18 Endrin aldehyde

R.T.: 0.000 min  
 Exp R.T. : 6.195 min  
 Response: 0  
 Conc: N.D.



#18 Endrin aldehyde

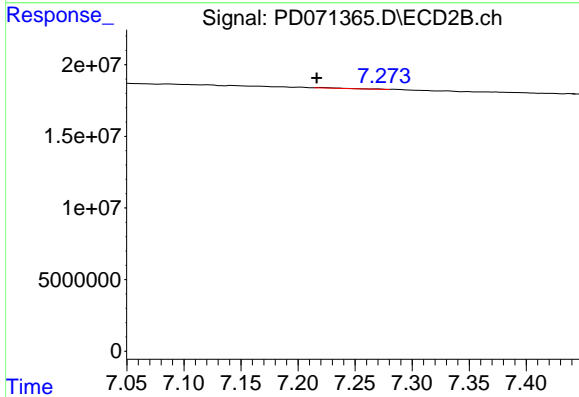
R.T.: 6.969 min  
 Delta R.T.: -0.015 min  
 Response: 389843  
 Conc: 0.04 ng/ml



#19 Endosulfan Sulfate

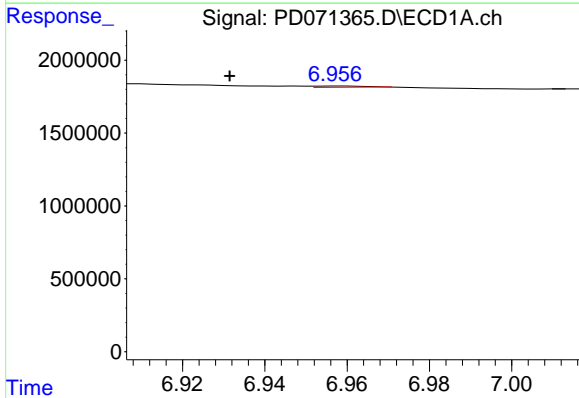
R.T.: 0.000 min  
 Exp R.T.: 6.420 min  
 Response: 0  
 Conc: N.D.

Instrument :  
 ECD\_D  
 ClientSampleId :



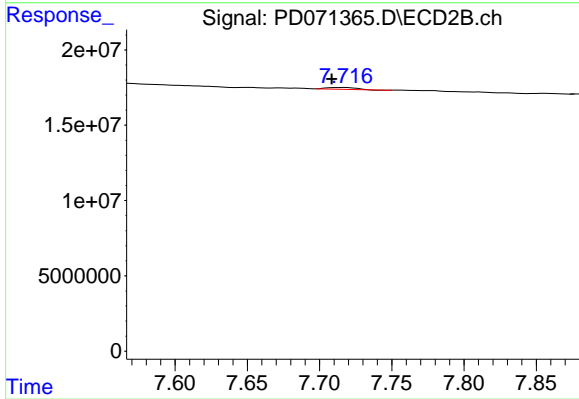
#19 Endosulfan Sulfate

R.T.: 7.221 min  
 Delta R.T.: 0.005 min  
 Response: 662905  
 Conc: 0.06 ng/ml



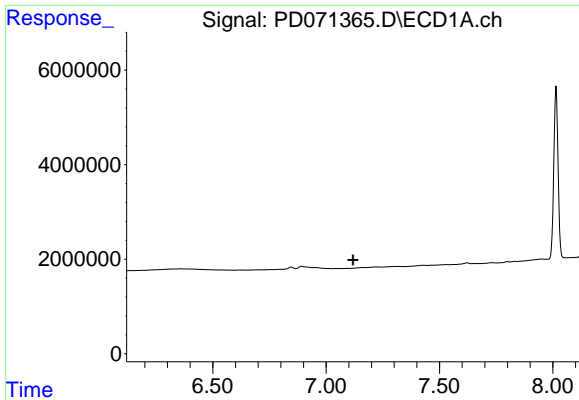
#21 Endrin ketone

R.T.: 6.959 min  
 Delta R.T.: 0.027 min  
 Response: 113845  
 Conc: 0.03 ng/ml



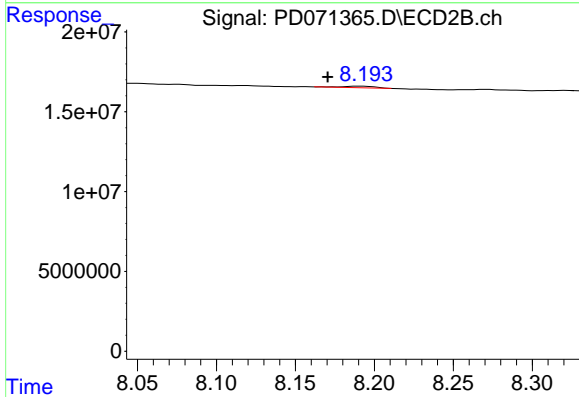
#21 Endrin ketone

R.T.: 7.716 min  
 Delta R.T.: 0.008 min  
 Response: 1442954  
 Conc: 0.11 ng/ml

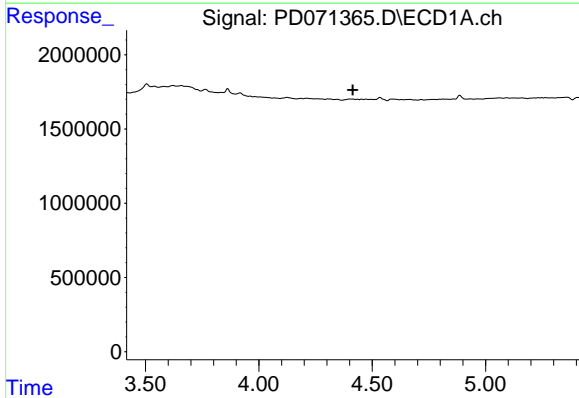


#22 Mirex  
 R.T.: 0.000 min  
 Exp R.T.: 7.119 min  
 Response: 0  
 Conc: N.D.

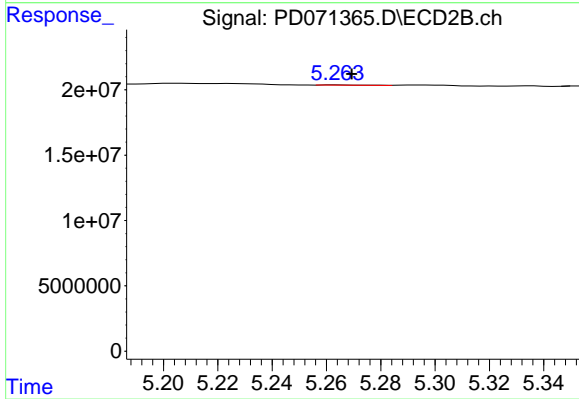
Instrument :  
 ECD\_D  
 ClientSampleId :



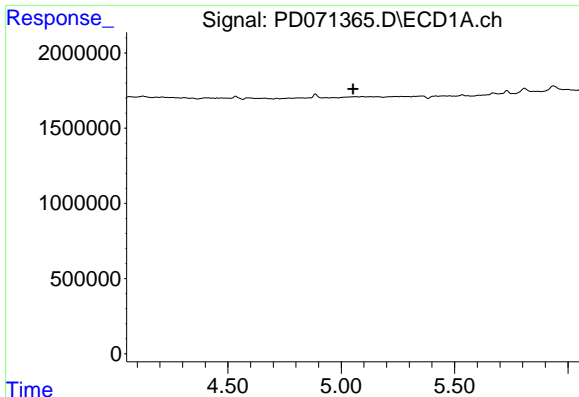
#22 Mirex  
 R.T.: 8.192 min  
 Delta R.T.: 0.021 min  
 Response: 1309507  
 Conc: 0.15 ng/ml



#24 Chlordane-2  
 R.T.: 0.000 min  
 Exp R.T.: 4.415 min  
 Response: 0  
 Conc: N.D.



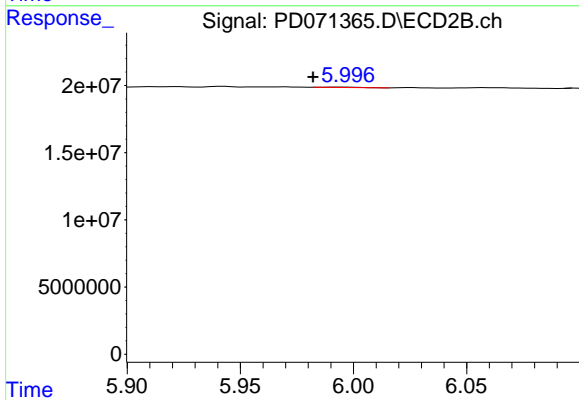
#24 Chlordane-2  
 R.T.: 5.264 min  
 Delta R.T.: -0.006 min  
 Response: 280046  
 Conc: 0.47 ng/ml



#25 Chlordane-3

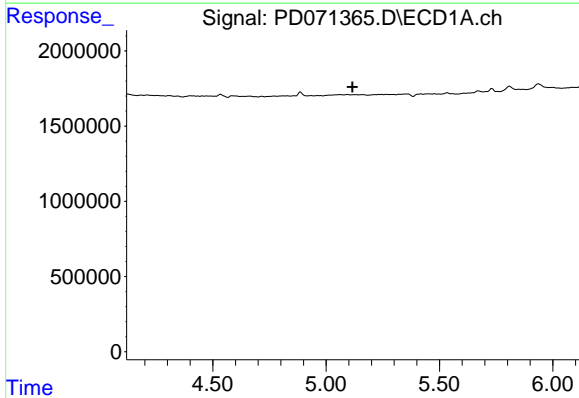
R.T.: 0.000 min  
 Exp R.T. : 5.053 min  
 Response: 0  
 Conc: N.D.

Instrument :  
 ECD\_D  
 ClientSampleId :



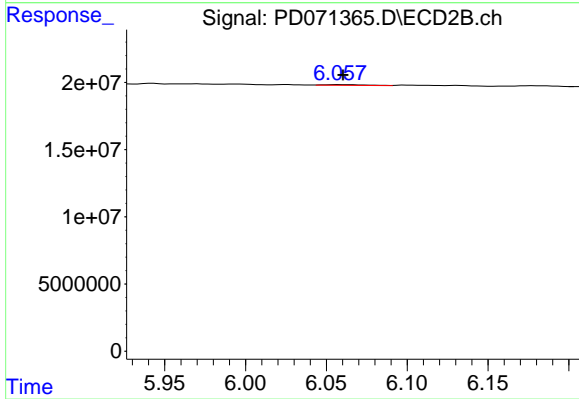
#25 Chlordane-3

R.T.: 5.996 min  
 Delta R.T.: 0.014 min  
 Response: 326783  
 Conc: 0.18 ng/ml



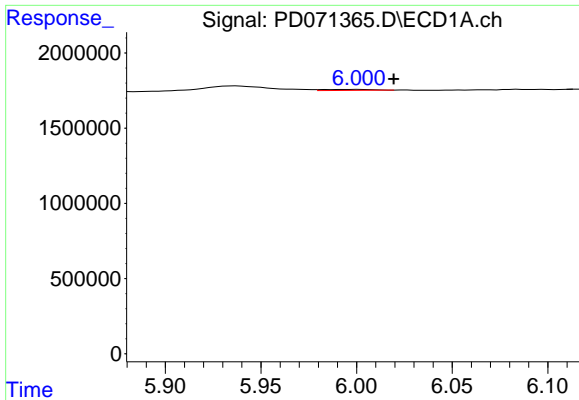
#26 Chlordane-4

R.T.: 0.000 min  
 Exp R.T. : 5.117 min  
 Response: 0  
 Conc: N.D.



#26 Chlordane-4

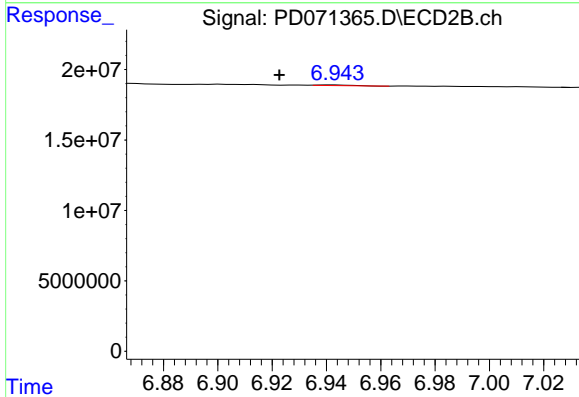
R.T.: 6.058 min  
 Delta R.T.: -0.002 min  
 Response: 965882  
 Conc: 0.44 ng/ml



#27 Chlordane-5

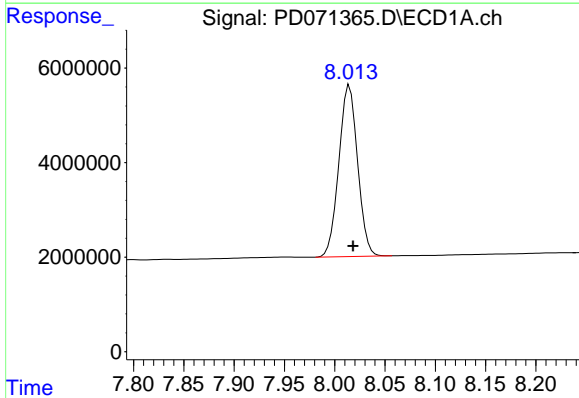
R.T.: 6.002 min  
 Delta R.T.: -0.018 min  
 Response: 116694  
 Conc: 0.97 ng/ml

Instrument :  
 ECD\_D  
 ClientSampleId :



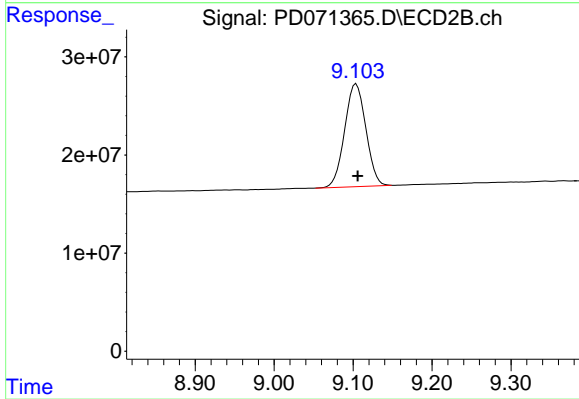
#27 Chlordane-5

R.T.: 6.943 min  
 Delta R.T.: 0.020 min  
 Response: 407768  
 Conc: 0.90 ng/ml



#28 Decachlorobiphenyl

R.T.: 8.015 min  
 Delta R.T.: -0.004 min  
 Response: 46976698  
 Conc: 16.94 ng/ml



#28 Decachlorobiphenyl

R.T.: 9.104 min  
 Delta R.T.: -0.002 min  
 Response: 196062846  
 Conc: 18.94 ng/ml