

Data Path : Z:\pestpcbsrv\HPCHEM1\ECD_D\Data\PD080522\
 Data File : PD071364.D
 Signal(s) : Signal #1: ECD1A.ch Signal #2: ECD2B.ch
 Acq On : 05 Aug 2022 14:16
 Operator : AR\AJ
 Sample : N3980-03
 Misc : TOX MDL 50 PPB
 ALS Vial : 10 Sample Multiplier: 1

Instrument :
 ECD_D
 ClientSampleId :
 MDL-SOIL-03-QT3-2022

Manual Integrations
 APPROVED

Reviewed By :Yogesh Patel 08/08/2022
 Supervised By :Ankita Jodhani 08/08/2022

Integration File signal 1: autoint1.e
 Integration File signal 2: autoint2.e
 Quant Time: Aug 05 14:29:41 2022
 Quant Method : Z:\pestpcbsrv\HPCHEM1\ECD_D\Method\DTX072622.M
 Quant Title : GC Extractables
 QLast Update : Tue Jul 26 04:20:10 2022
 Response via : Initial Calibration
 Integrator: ChemStation

Volume Inj. : 1 µl
 Signal #1 Phase : ZB-MR2 Signal #2 Phase: ZB-MR1
 Signal #1 Info : 30M x 0.32mm x0.2 Signal #2 Info : 30M x 0.32mm x 0.50µm

Compound	RT#1	RT#2	Resp#1	Resp#2	ng/ml	ng/ml

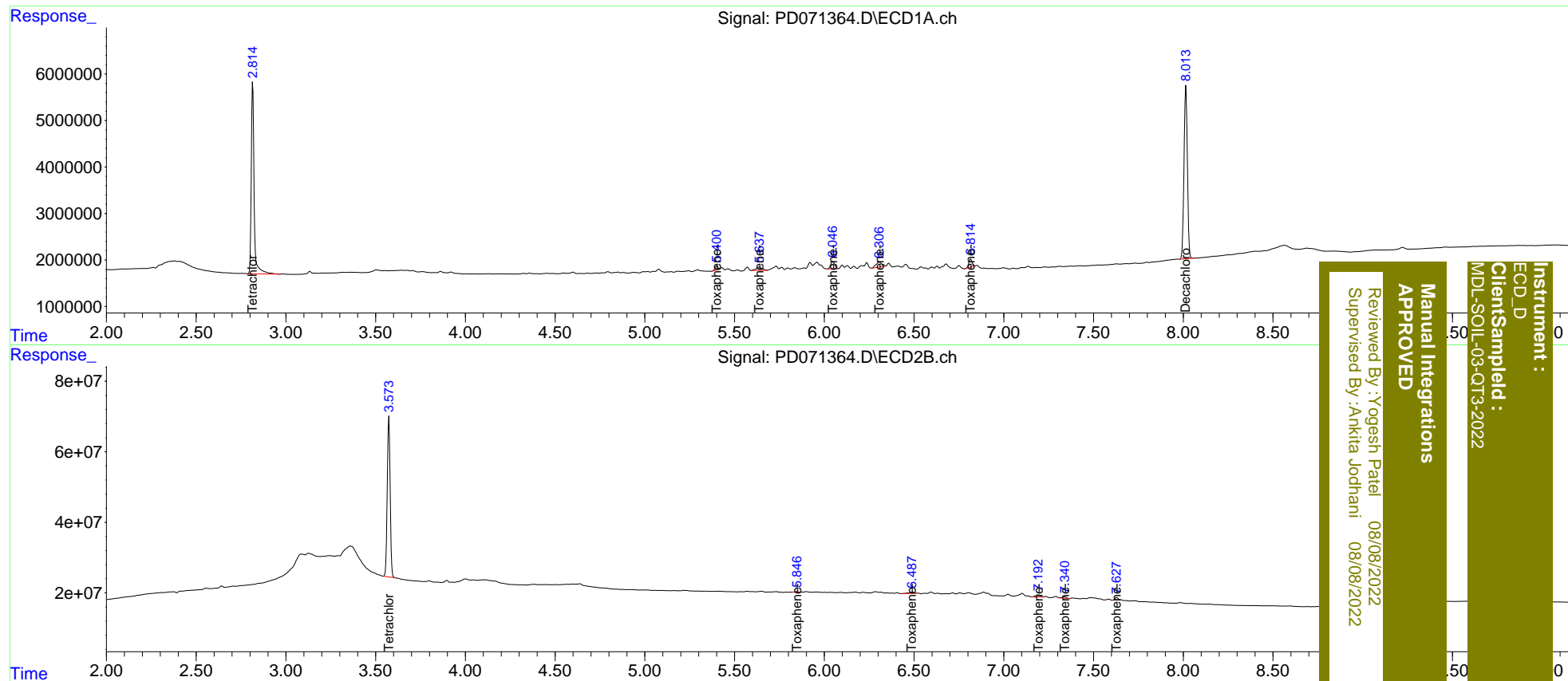
System Monitoring Compounds						
1) SA Tetrachlo...	2.815	3.574	45044719	507.3E6	17.121	19.108
7) SA Decachlor...	8.015	9.103	48756793	201.5E6	18.983	21.350
Target Compounds						
2) Toxaphene-1	5.402	5.847	973295	2047483	50.937	52.000
3) Toxaphene-2	5.639	6.489	1651017	6768428	44.008	52.847
4) Toxaphene-3	6.046	7.192	2505883	11517692	43.061m	49.722m
5) Toxaphene-4	6.307	7.341	2491144	6095693	42.120	47.643
6) Toxaphene-5	6.816	7.628	2147317	8936037	35.875	53.524 #

(f)=RT Delta > 1/2 Window (#)=Amounts differ by > 25% (m)=manual int.

Data Path : Z:\pestpcbsrv\HPCHEM1\ECD_D\Data\PD080522\
 Data File : PD071364.D
 Signal(s) : Signal #1: ECD1A.ch Signal #2: ECD2B.ch
 Acq On : 05 Aug 2022 14:16
 Operator : AR\AJ
 Sample : N3980-03
 Misc : TOX MDL 50 PPB
 ALS Vial : 10 Sample Multiplier: 1

Integration File signal 1: autoint1.e
 Integration File signal 2: autoint2.e
 Quant Time: Aug 05 14:29:41 2022
 Quant Method : Z:\pestpcbsrv\HPCHEM1\ECD_D\Method\DTX072622.M
 Quant Title : GC Extractables
 QLast Update : Tue Jul 26 04:20:10 2022
 Response via : Initial Calibration
 Integrator: ChemStation

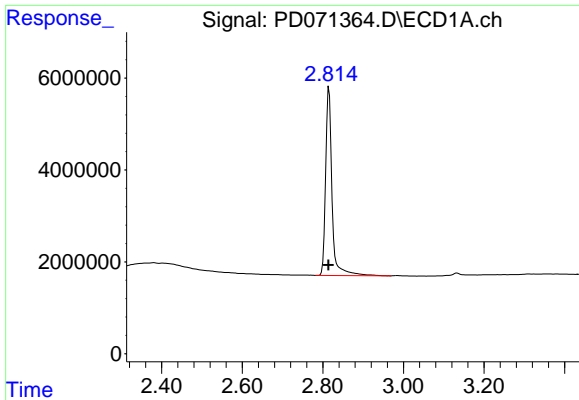
Volume Inj. : 1 µl
 Signal #1 Phase : ZB-MR2 Signal #2 Phase: ZB-MR1
 Signal #1 Info : 30M x 0.32mm x0.2 Signal #2 Info : 30M x 0.32mm x 0.50µm



Instrument :
 ECD_D
 ClientSampleId :
 MDL-SOIL-03-QT3-2022

Manual Integrations
 APPROVED

Reviewed By : Yogesh Patel 08/08/2022
 Supervised By : Ankita Jodhani 08/08/2022

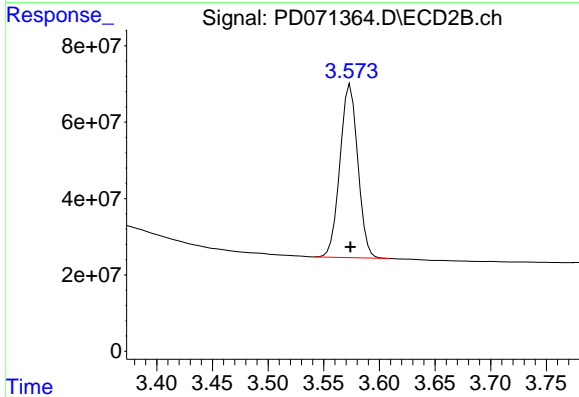


#1 Tetrachloro-m-xylene
 R.T.: 2.815 min
 Delta R.T.: 0.001 min
 Response: 45044719
 Conc: 17.12 ng/ml

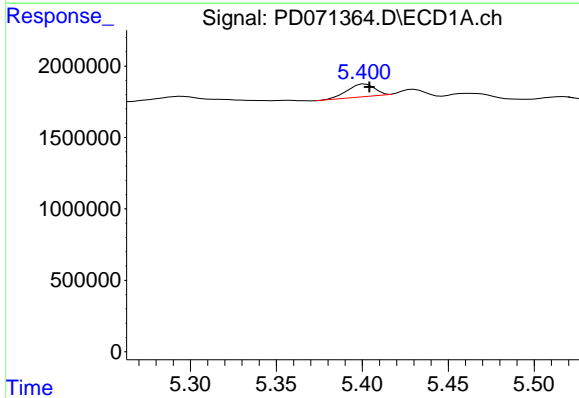
Instrument :
 ECD_D
 ClientSampleId :
 MDL-SOIL-03-QT3-2022

Manual Integrations
 APPROVED

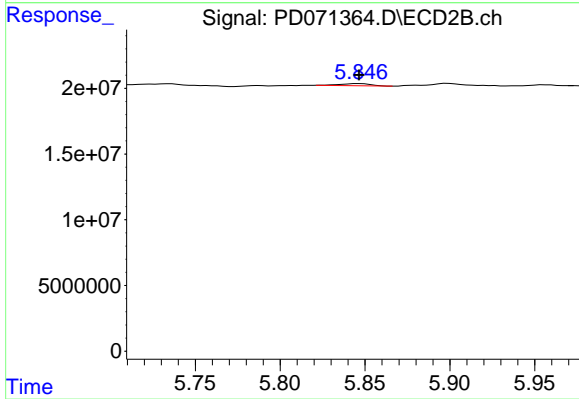
Reviewed By :Yogesh Patel 08/08/2022
 Supervised By :Ankita Jodhani 08/08/2022



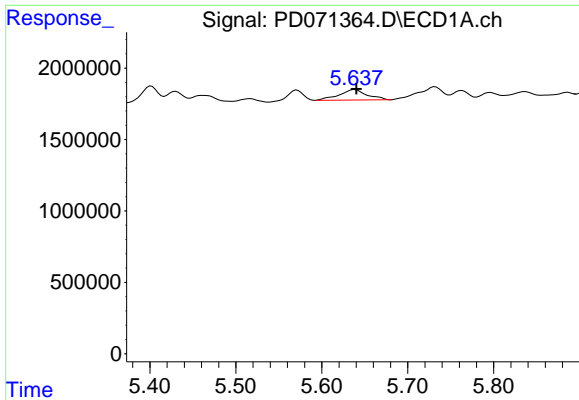
#1 Tetrachloro-m-xylene
 R.T.: 3.574 min
 Delta R.T.: 0.000 min
 Response: 507278135
 Conc: 19.11 ng/ml



#2 Toxaphene-1
 R.T.: 5.402 min
 Delta R.T.: -0.003 min
 Response: 973295
 Conc: 50.94 ng/ml



#2 Toxaphene-1
 R.T.: 5.847 min
 Delta R.T.: 0.000 min
 Response: 2047483
 Conc: 52.00 ng/ml



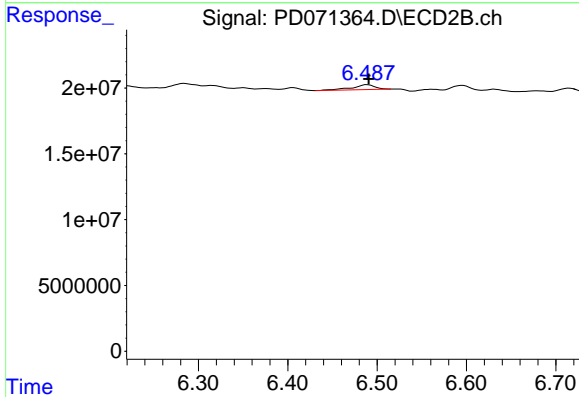
#3 Toxaphene-2

R.T.: 5.639 min
 Delta R.T.: -0.002 min
 Response: 1651017
 Conc: 44.01 ng/ml

Instrument : ECD_D
 ClientSampleId : MDL-SOIL-03-QT3-2022

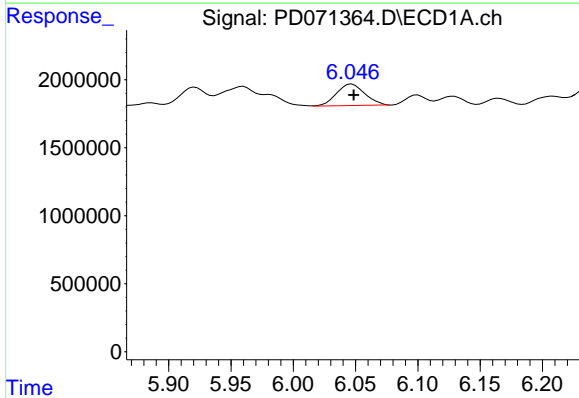
Manual Integrations
 APPROVED

Reviewed By :Yogesh Patel 08/08/2022
 Supervised By :Ankita Jodhani 08/08/2022



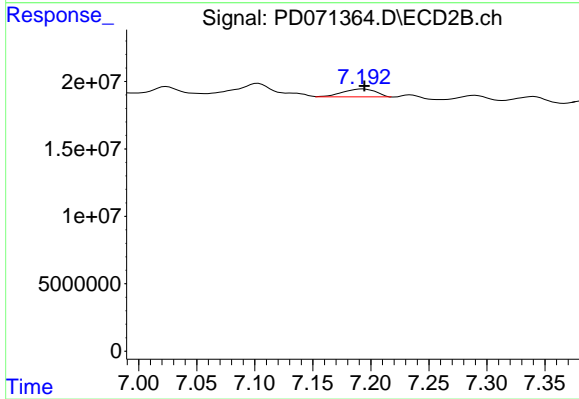
#3 Toxaphene-2

R.T.: 6.489 min
 Delta R.T.: -0.002 min
 Response: 6768428
 Conc: 52.85 ng/ml



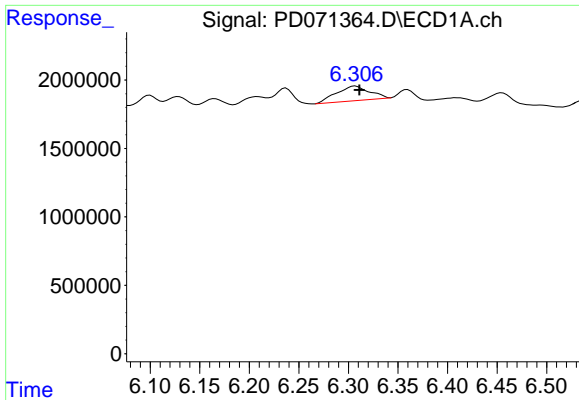
#4 Toxaphene-3

R.T.: 6.046 min
 Delta R.T.: -0.003 min
 Response: 2505883
 Conc: 43.06 ng/ml m



#4 Toxaphene-3

R.T.: 7.192 min
 Delta R.T.: -0.002 min
 Response: 11517692
 Conc: 49.72 ng/ml m



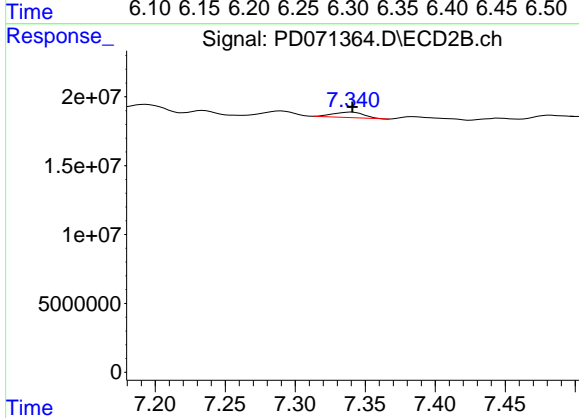
#5 Toxaphene-4

R.T.: 6.307 min
 Delta R.T.: -0.004 min
 Response: 2491144
 Conc: 42.12 ng/ml

Instrument :
 ECD_D
 ClientSampleId :
 MDL-SOIL-03-QT3-2022

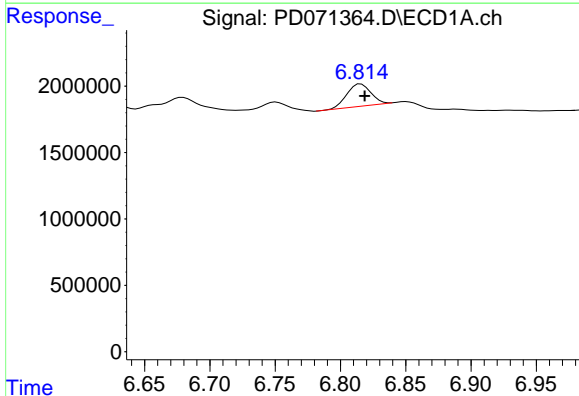
Manual Integrations
 APPROVED

Reviewed By :Yogesh Patel 08/08/2022
 Supervised By :Ankita Jodhani 08/08/2022



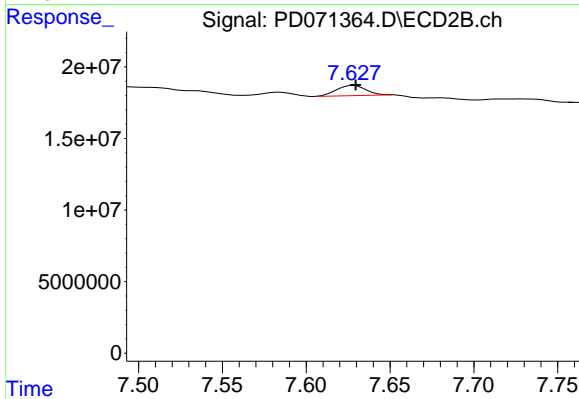
#5 Toxaphene-4

R.T.: 7.341 min
 Delta R.T.: 0.000 min
 Response: 6095693
 Conc: 47.64 ng/ml



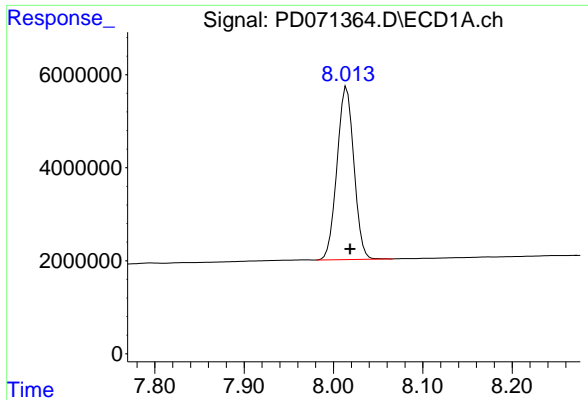
#6 Toxaphene-5

R.T.: 6.816 min
 Delta R.T.: -0.003 min
 Response: 2147317
 Conc: 35.88 ng/ml



#6 Toxaphene-5

R.T.: 7.628 min
 Delta R.T.: -0.001 min
 Response: 8936037
 Conc: 53.52 ng/ml



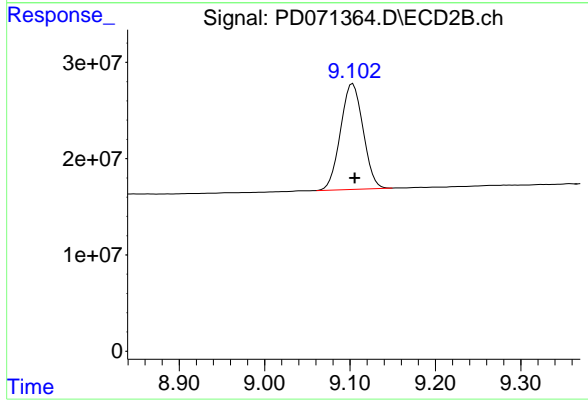
#7 Decachlorobiphenyl

R.T.: 8.015 min
 Delta R.T.: -0.004 min
 Response: 48756793
 Conc: 18.98 ng/ml

Instrument : ECD_D
 ClientSampleId : MDL-SOIL-03-QT3-2022

Manual Integrations
 APPROVED

Reviewed By :Yogesh Patel 08/08/2022
 Supervised By :Ankita Jodhani 08/08/2022



#7 Decachlorobiphenyl

R.T.: 9.103 min
 Delta R.T.: -0.002 min
 Response: 201513623
 Conc: 21.35 ng/ml