

Data Path : Z:\pestpcbsrv\HPCHEM1\ECD_D\Data\PD080522\
 Data File : PD071370.D
 Signal(s) : Signal #1: ECD1A.ch Signal #2: ECD2B.ch
 Acq On : 05 Aug 2022 16:16
 Operator : AR\AJ
 Sample : PSTDCCC050
 Misc :
 ALS Vial : 4 Sample Multiplier: 1

Instrument :
 ECD_D
 ClientSampleId :
 PSTDCCC050

Integration File signal 1: autoint1.e
 Integration File signal 2: autoint2.e
 Quant Time: Aug 08 09:36:05 2022
 Quant Method : Z:\pestpcbsrv\HPCHEM1\ECD_D\Method\PD072622.M
 Quant Title : GC Extractables
 QLast Update : Tue Jul 26 03:39:07 2022
 Response via : Initial Calibration
 Integrator: ChemStation

Volume Inj. : 2 µl
 Signal #1 Phase : ZB-MR2 Signal #2 Phase: ZB-MR1
 Signal #1 Info : 30M x 0.32mm x0.2 Signal #2 Info : 30M x 0.32mm x 0.50µm

	Compound	RT#1	RT#2	Resp#1	Resp#2	ng/ml	ng/ml

System Monitoring Compounds							
1)	SA Tetrachlo...	2.814	3.573	124.3E6	1300.9E6	43.815	46.214
28)	SA Decachlor...	8.014	9.102	135.4E6	544.1E6	48.802	52.557
Target Compounds							
2)	A alpha-BHC	3.324	4.039	180.7E6	1655.1E6	43.088	44.583
3)	MA gamma-BHC...	3.658	4.375	173.5E6	1322.7E6	43.385	44.175
4)	MA Heptachlor	4.005	4.953	176.7E6	974.4E6	41.664	46.084
5)	MB Aldrin	4.289	5.296	176.2E6	819.2E6	43.202	46.388
6)	B beta-BHC	3.956	4.581	69274175	527.2E6	40.551	44.508
7)	B delta-BHC	4.190	4.829	168.8E6	1054.8E6	43.001	53.004
8)	B Heptachlo...	4.797	5.727	158.7E6	749.6E6	43.341	57.355 #
9)	A Endosulfan I	5.171	6.115	148.1E6	648.5E6	43.248	47.164
10)	B gamma-Chl...	5.050	5.981	162.3E6	697.1E6	42.725	47.466
11)	B alpha-Chl...	5.114	6.059	159.5E6	684.9E6	42.916	47.234
12)	B 4,4'-DDE	5.305	6.231	151.8E6	679.8E6	44.356	47.555
13)	MA Dieldrin	5.438	6.392	158.2E6	698.3E6	43.688	47.523
14)	MA Endrin	5.715	6.624	130.7E6	509.5E6	41.287	40.732
15)	B Endosulfa...	6.011	6.850	126.4E6	568.1E6	42.067	45.820
16)	A 4,4'-DDD	5.864	6.755	129.5E6	594.2E6	45.422	49.955
17)	MA 4,4'-DDT	6.118	7.067	119.1E6	575.4E6	40.364	44.118
18)	B Endrin al...	6.192	6.982	99483824	453.5E6	45.124	46.811
19)	B Endosulfa...	6.416	7.213	126.2E6	563.0E6	43.889	47.209
20)	A Methoxychlor	6.699	7.543	64814179	314.9E6	39.293	45.680
21)	B Endrin ke...	6.927	7.706	154.7E6	655.9E6	47.504	48.861
22)	Mirex	7.115	8.168	110.7E6	427.7E6	45.196	49.717

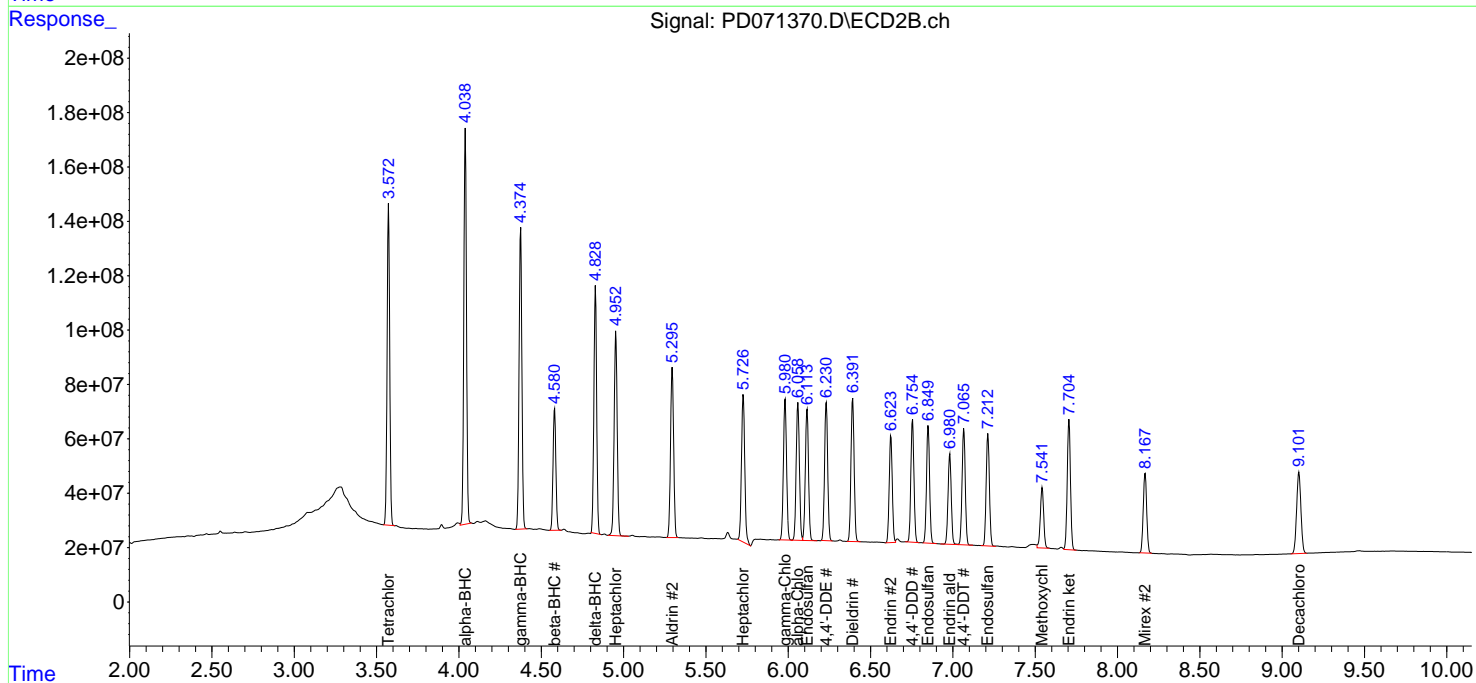
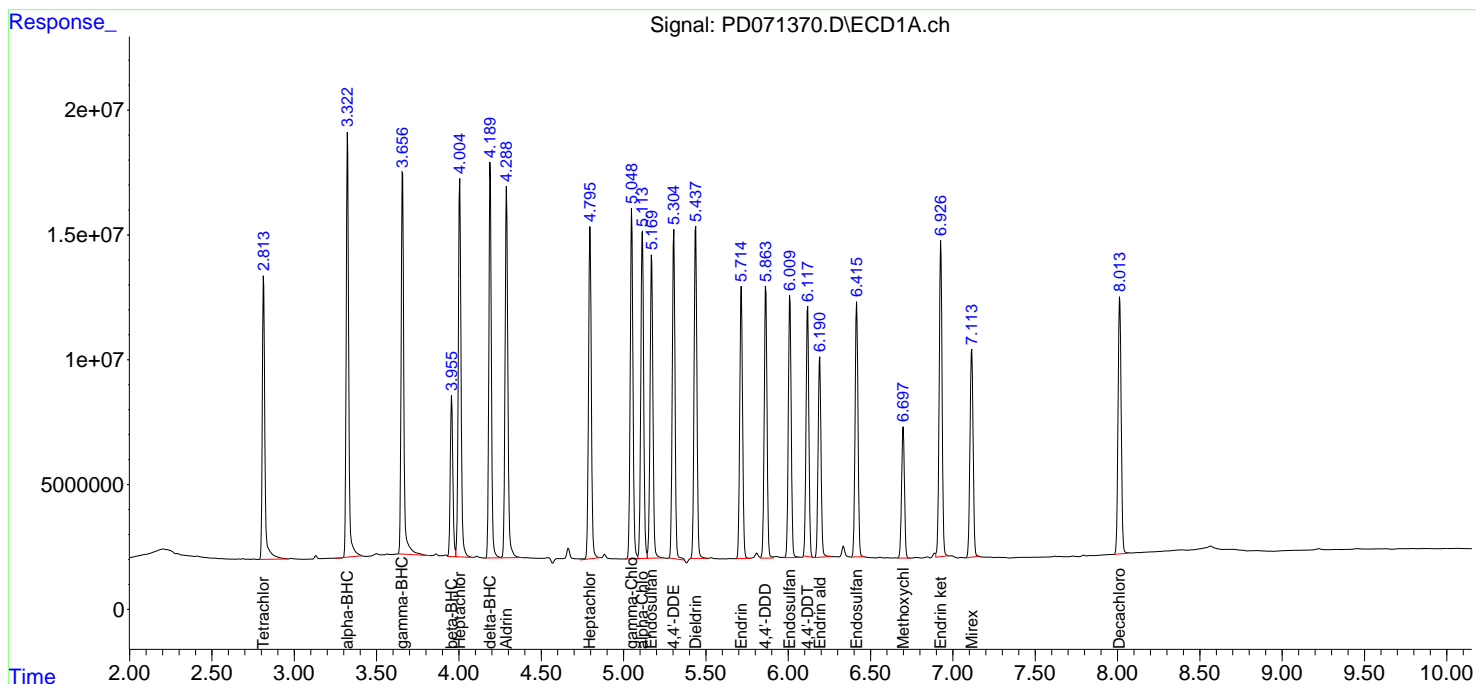
(f)=RT Delta > 1/2 Window (#)=Amounts differ by > 25% (m)=manual int.

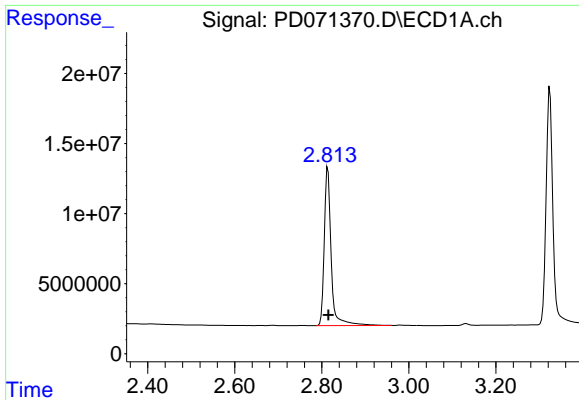
Data Path : Z:\pestpcbsrv\HPCHEM1\ECD_D\Data\PD080522\
 Data File : PD071370.D
 Signal(s) : Signal #1: ECD1A.ch Signal #2: ECD2B.ch
 Acq On : 05 Aug 2022 16:16
 Operator : AR\AJ
 Sample : PSTDCCC050
 Misc :
 ALS Vial : 4 Sample Multiplier: 1

Instrument :
 ECD_D
 ClientSampleId :
 PSTDCCC050

Integration File signal 1: autoint1.e
 Integration File signal 2: autoint2.e
 Quant Time: Aug 08 09:36:05 2022
 Quant Method : Z:\pestpcbsrv\HPCHEM1\ECD_D\Method\PD072622.M
 Quant Title : GC Extractables
 QLast Update : Tue Jul 26 03:39:07 2022
 Response via : Initial Calibration
 Integrator: ChemStation

Volume Inj. : 2 µl
 Signal #1 Phase : ZB-MR2 Signal #2 Phase: ZB-MR1
 Signal #1 Info : 30M x 0.32mm x0.2 Signal #2 Info : 30M x 0.32mm x 0.50µm

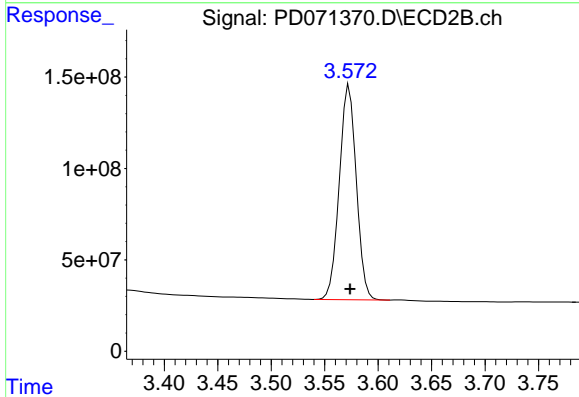




#1 Tetrachloro-m-xylene

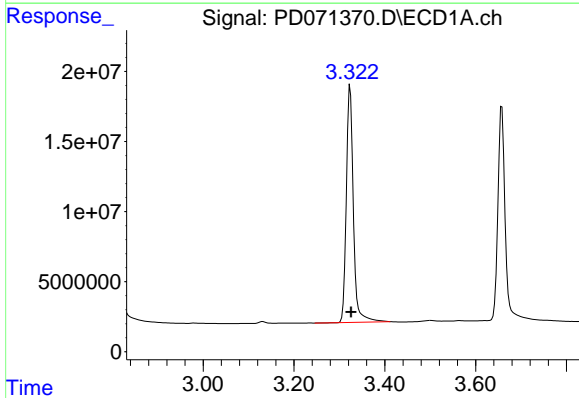
R.T.: 2.814 min
 Delta R.T.: 0.000 min
 Response: 124258537
 Conc: 43.82 ng/ml

Instrument :
 ECD_D
 ClientSampleId :
 PSTDCCC050



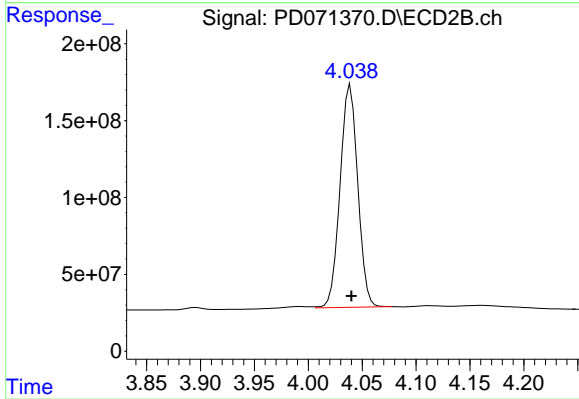
#1 Tetrachloro-m-xylene

R.T.: 3.573 min
 Delta R.T.: 0.000 min
 Response: 1300927044
 Conc: 46.21 ng/ml



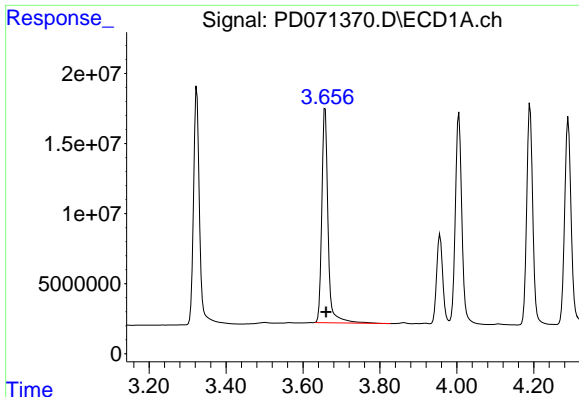
#2 alpha-BHC

R.T.: 3.324 min
 Delta R.T.: -0.002 min
 Response: 180689093
 Conc: 43.09 ng/ml



#2 alpha-BHC

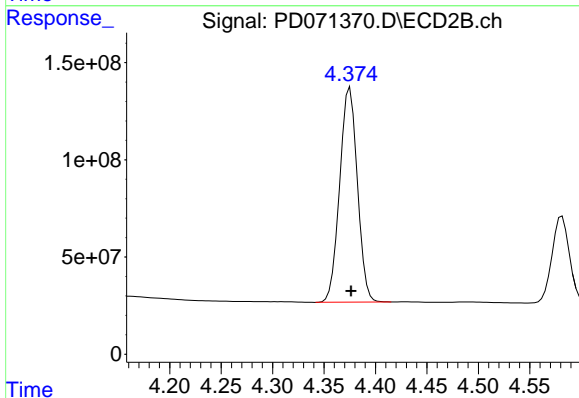
R.T.: 4.039 min
 Delta R.T.: -0.001 min
 Response: 1655068614
 Conc: 44.58 ng/ml



#3 gamma-BHC (Lindane)

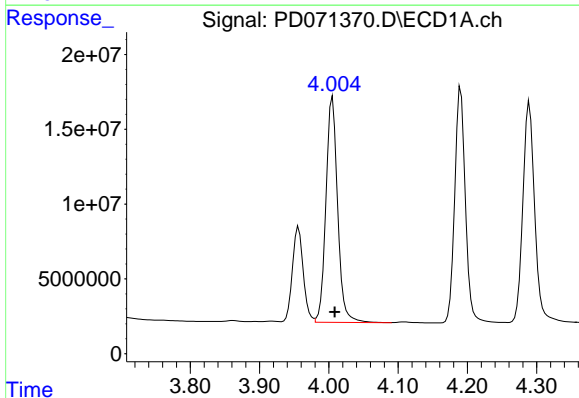
R.T.: 3.658 min
 Delta R.T.: -0.002 min
 Response: 173544772
 Conc: 43.38 ng/ml

Instrument :
 ECD_D
 ClientSampleId :
 PSTDCCC050



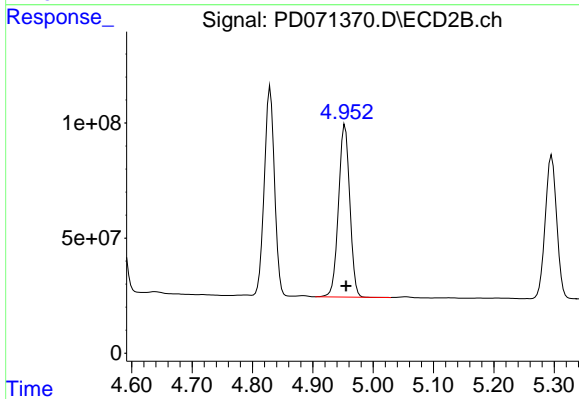
#3 gamma-BHC (Lindane)

R.T.: 4.375 min
 Delta R.T.: -0.001 min
 Response: 1322707879
 Conc: 44.17 ng/ml



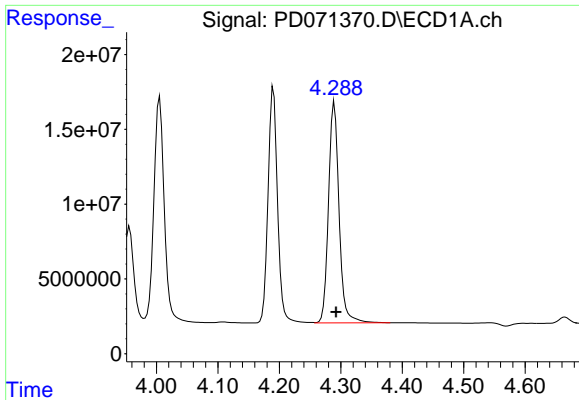
#4 Heptachlor

R.T.: 4.005 min
 Delta R.T.: -0.003 min
 Response: 176721210
 Conc: 41.66 ng/ml



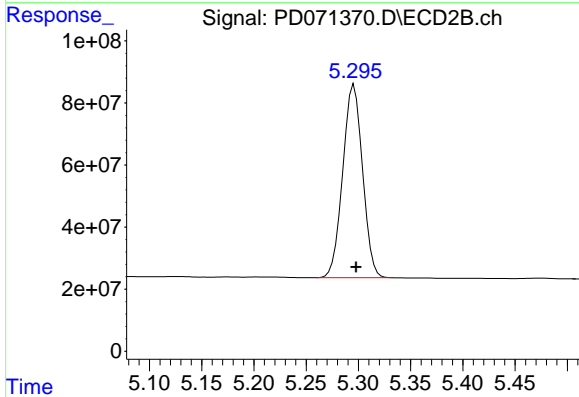
#4 Heptachlor

R.T.: 4.953 min
 Delta R.T.: -0.002 min
 Response: 974377028
 Conc: 46.08 ng/ml

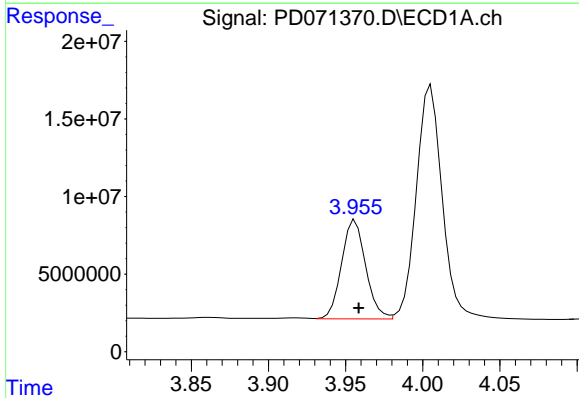


#5 Aldrin
 R.T.: 4.289 min
 Delta R.T.: -0.003 min
 Response: 176187029
 Conc: 43.20 ng/ml

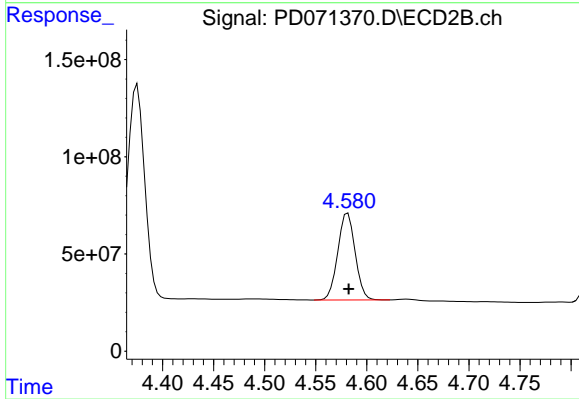
Instrument :
 ECD_D
 ClientSampleId :
 PSTDCCC050



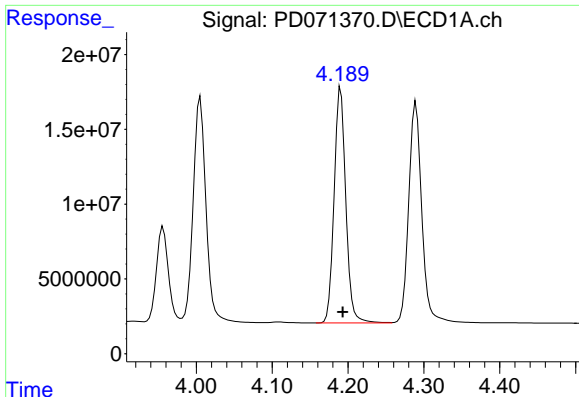
#5 Aldrin
 R.T.: 5.296 min
 Delta R.T.: -0.002 min
 Response: 819224674
 Conc: 46.39 ng/ml



#6 beta-BHC
 R.T.: 3.956 min
 Delta R.T.: -0.002 min
 Response: 69274175
 Conc: 40.55 ng/ml



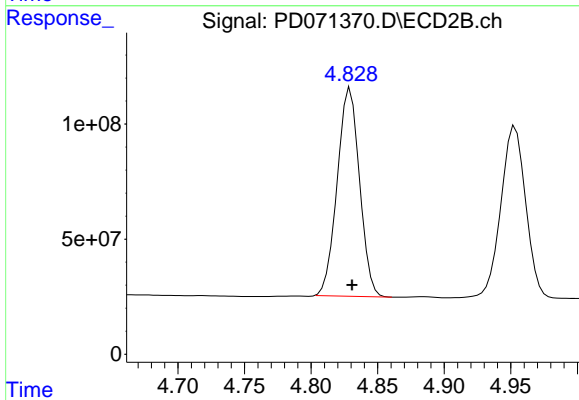
#6 beta-BHC
 R.T.: 4.581 min
 Delta R.T.: 0.000 min
 Response: 527181665
 Conc: 44.51 ng/ml



#7 delta-BHC

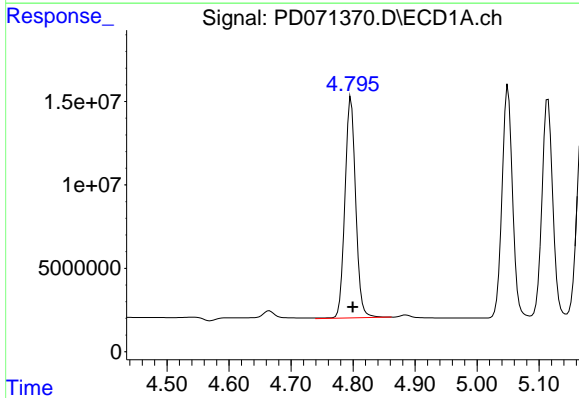
R.T.: 4.190 min
 Delta R.T.: -0.002 min
 Response: 168775283
 Conc: 43.00 ng/ml

Instrument :
 ECD_D
 ClientSampleId :
 PSTDCCC050



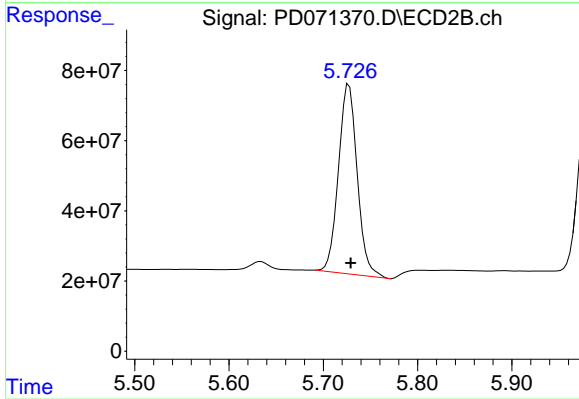
#7 delta-BHC

R.T.: 4.829 min
 Delta R.T.: -0.001 min
 Response: 1054820005
 Conc: 53.00 ng/ml



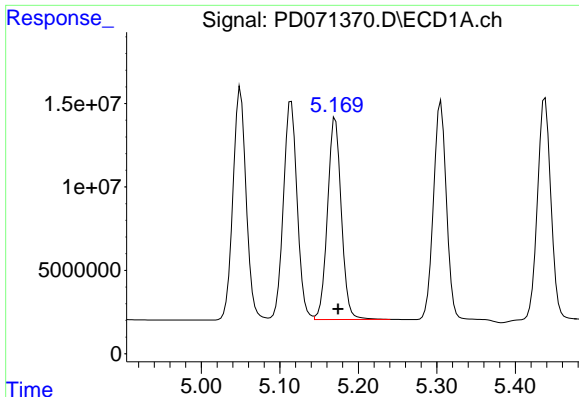
#8 Heptachlor epoxide

R.T.: 4.797 min
 Delta R.T.: -0.003 min
 Response: 158718986
 Conc: 43.34 ng/ml



#8 Heptachlor epoxide

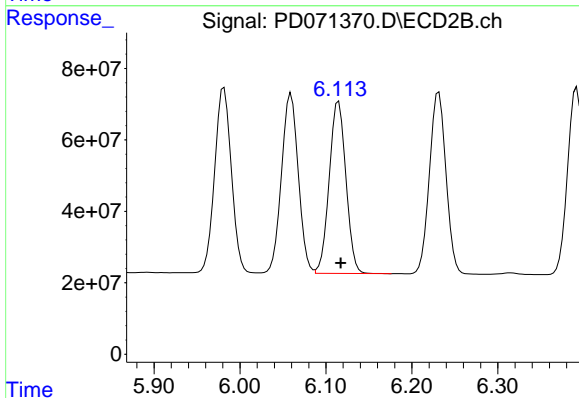
R.T.: 5.727 min
 Delta R.T.: -0.002 min
 Response: 749555871
 Conc: 57.36 ng/ml



#9 Endosulfan I

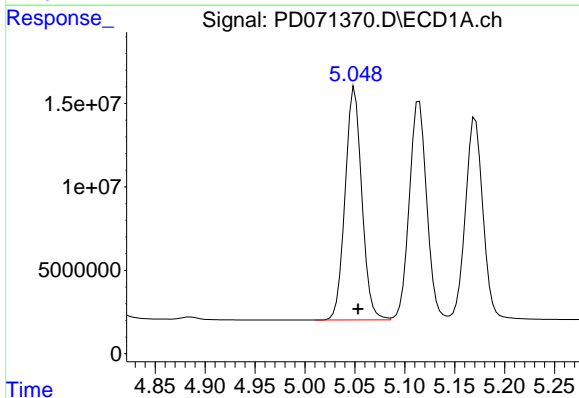
R.T.: 5.171 min
 Delta R.T.: -0.004 min
 Response: 148133073
 Conc: 43.25 ng/ml

Instrument :
 ECD_D
 ClientSampleId :
 PSTDCCC050



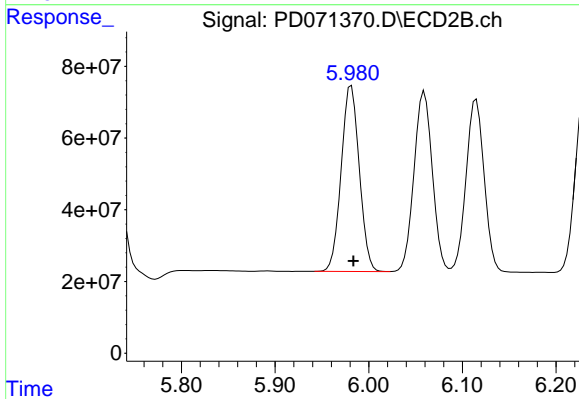
#9 Endosulfan I

R.T.: 6.115 min
 Delta R.T.: -0.002 min
 Response: 648453767
 Conc: 47.16 ng/ml



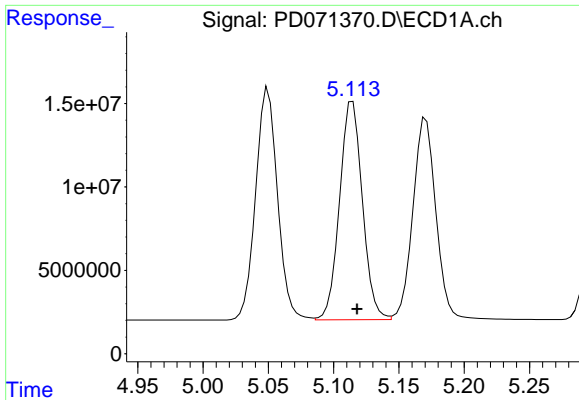
#10 gamma-Chlordane

R.T.: 5.050 min
 Delta R.T.: -0.003 min
 Response: 162343780
 Conc: 42.72 ng/ml



#10 gamma-Chlordane

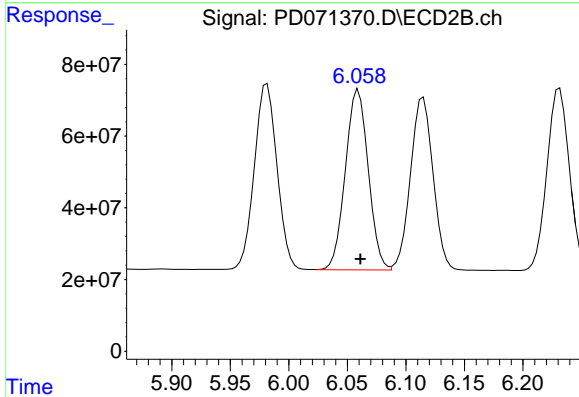
R.T.: 5.981 min
 Delta R.T.: -0.002 min
 Response: 697061016
 Conc: 47.47 ng/ml



#11 alpha-Chlordane

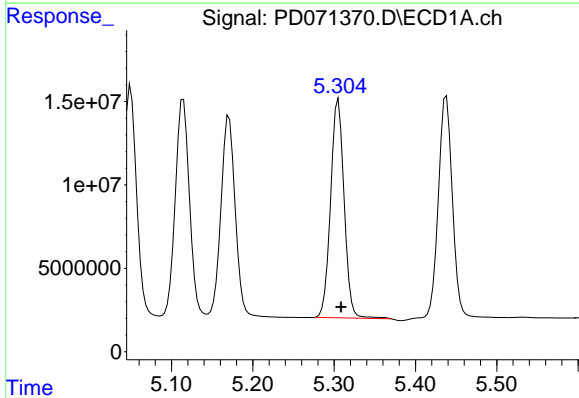
R.T.: 5.114 min
 Delta R.T.: -0.003 min
 Response: 159463729
 Conc: 42.92 ng/ml

Instrument :
 ECD_D
 ClientSampleId :
 PSTDCCC050



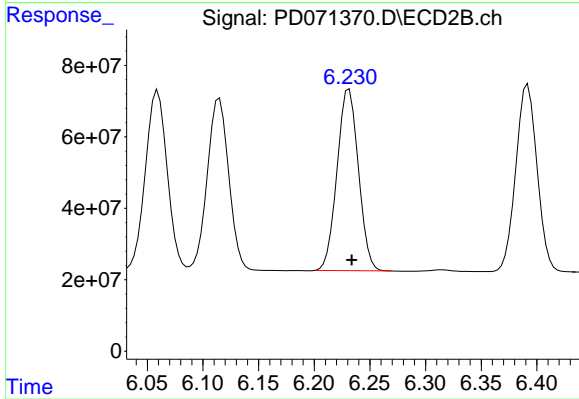
#11 alpha-Chlordane

R.T.: 6.059 min
 Delta R.T.: -0.002 min
 Response: 684921374
 Conc: 47.23 ng/ml



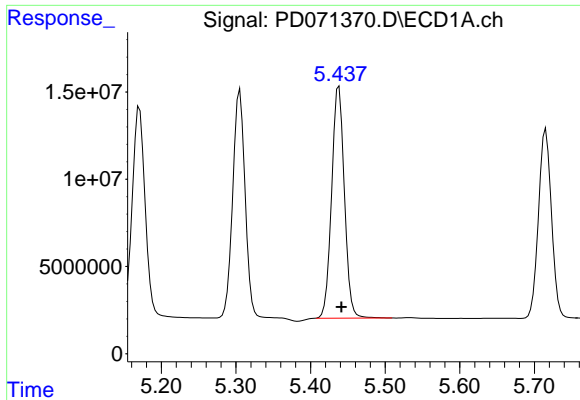
#12 4,4'-DDE

R.T.: 5.305 min
 Delta R.T.: -0.003 min
 Response: 151811650
 Conc: 44.36 ng/ml



#12 4,4'-DDE

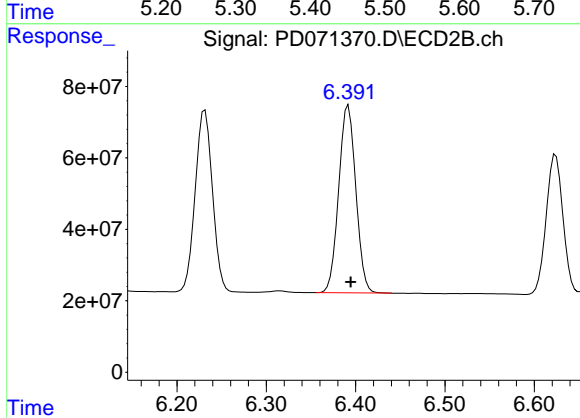
R.T.: 6.231 min
 Delta R.T.: -0.002 min
 Response: 679791684
 Conc: 47.56 ng/ml



#13 Dieldrin

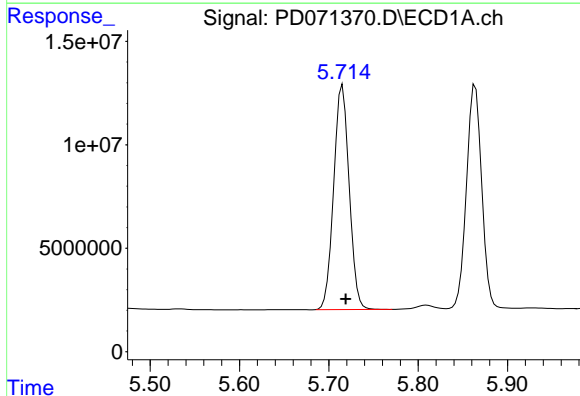
R.T.: 5.438 min
 Delta R.T.: -0.003 min
 Response: 158232709
 Conc: 43.69 ng/ml

Instrument :
 ECD_D
 ClientSampleId :
 PSTDCCC050



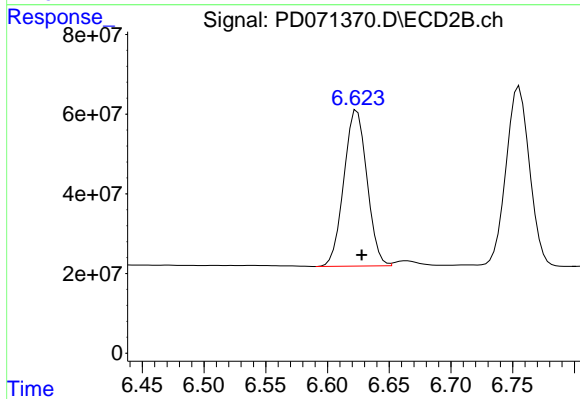
#13 Dieldrin

R.T.: 6.392 min
 Delta R.T.: -0.003 min
 Response: 698330709
 Conc: 47.52 ng/ml



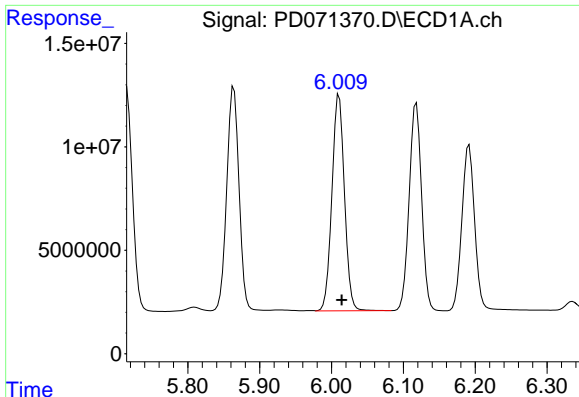
#14 Endrin

R.T.: 5.715 min
 Delta R.T.: -0.004 min
 Response: 130720903
 Conc: 41.29 ng/ml



#14 Endrin

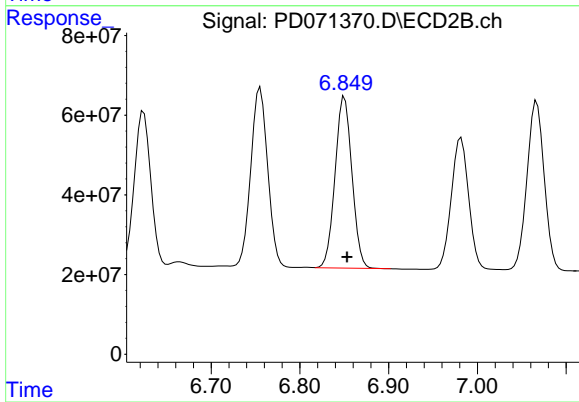
R.T.: 6.624 min
 Delta R.T.: -0.004 min
 Response: 509500572
 Conc: 40.73 ng/ml



#15 Endosulfan II

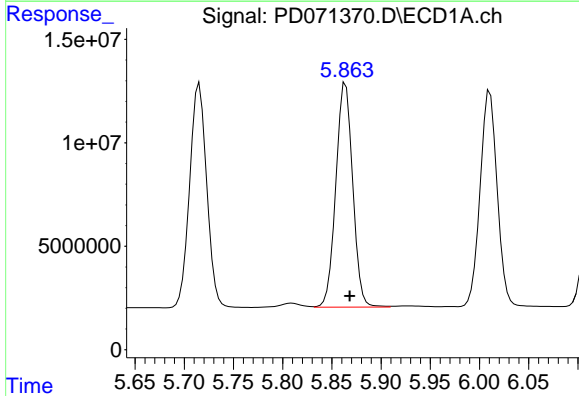
R.T.: 6.011 min
 Delta R.T.: -0.004 min
 Response: 126421623
 Conc: 42.07 ng/ml

Instrument :
 ECD_D
 ClientSampleId :
 PSTDCCC050



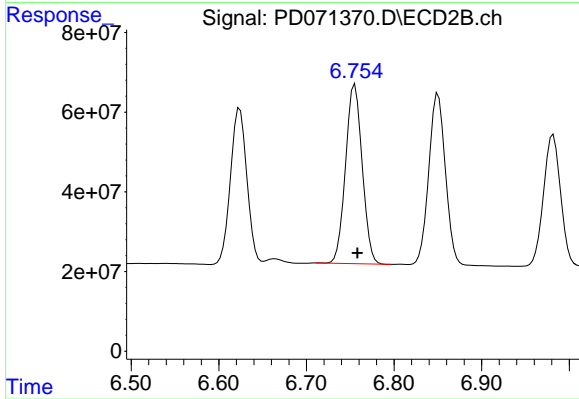
#15 Endosulfan II

R.T.: 6.850 min
 Delta R.T.: -0.003 min
 Response: 568125080
 Conc: 45.82 ng/ml



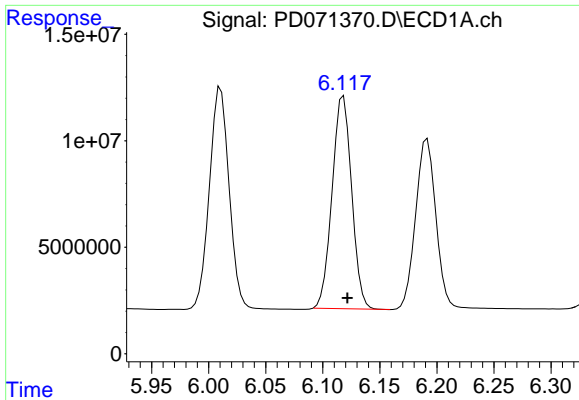
#16 4,4'-DDD

R.T.: 5.864 min
 Delta R.T.: -0.004 min
 Response: 129483492
 Conc: 45.42 ng/ml



#16 4,4'-DDD

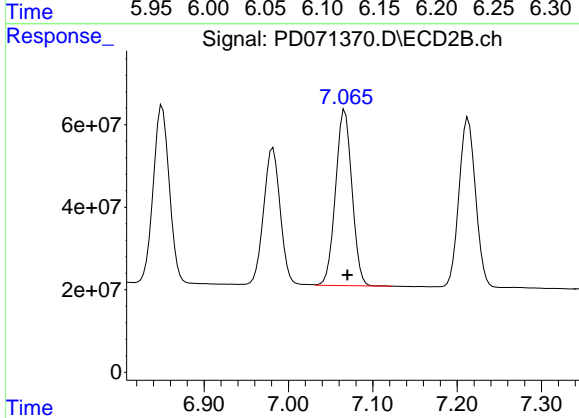
R.T.: 6.755 min
 Delta R.T.: -0.003 min
 Response: 594157551
 Conc: 49.95 ng/ml



#17 4,4'-DDT

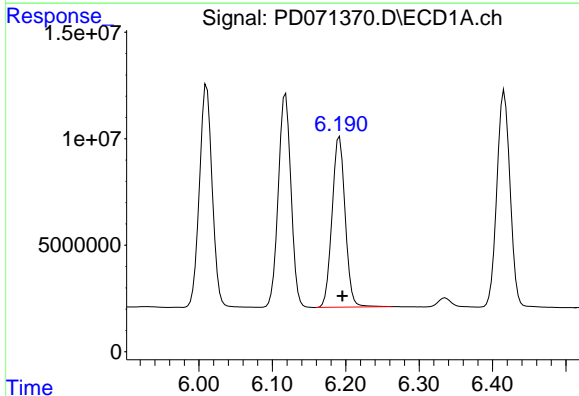
R.T.: 6.118 min
 Delta R.T.: -0.003 min
 Response: 119145236
 Conc: 40.36 ng/ml

Instrument :
 ECD_D
 ClientSampleId :
 PSTDCCC050



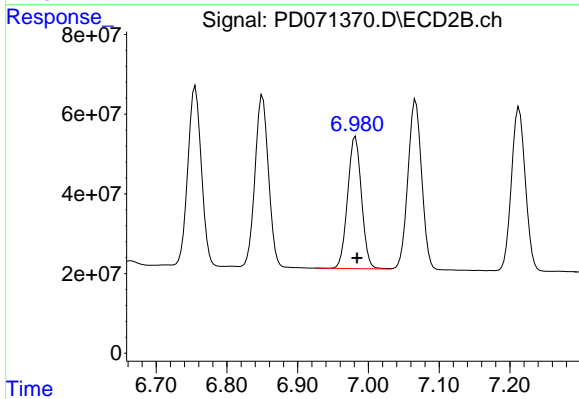
#17 4,4'-DDT

R.T.: 7.067 min
 Delta R.T.: -0.003 min
 Response: 575431220
 Conc: 44.12 ng/ml



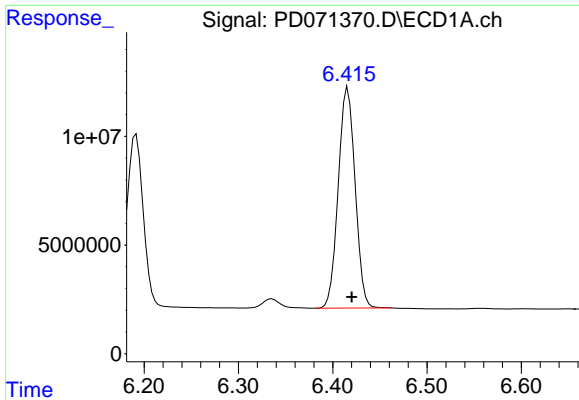
#18 Endrin aldehyde

R.T.: 6.192 min
 Delta R.T.: -0.004 min
 Response: 99483824
 Conc: 45.12 ng/ml



#18 Endrin aldehyde

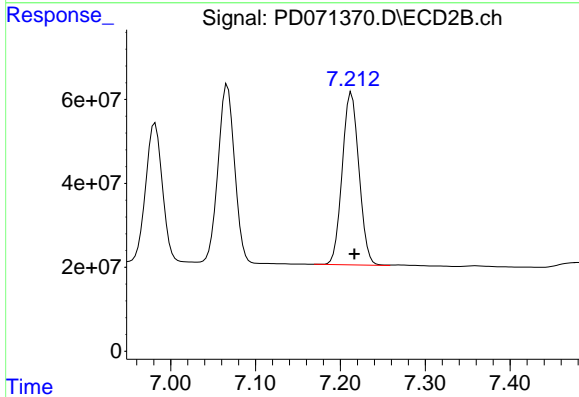
R.T.: 6.982 min
 Delta R.T.: -0.002 min
 Response: 453503371
 Conc: 46.81 ng/ml



#19 Endosulfan Sulfate

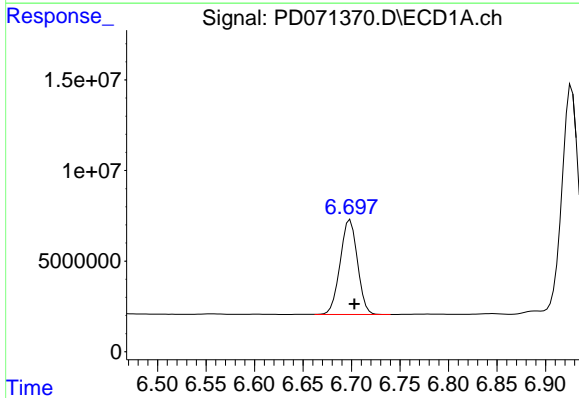
R.T.: 6.416 min
 Delta R.T.: -0.004 min
 Response: 126214296
 Conc: 43.89 ng/ml

Instrument :
 ECD_D
 ClientSampleId :
 PSTDCCC050



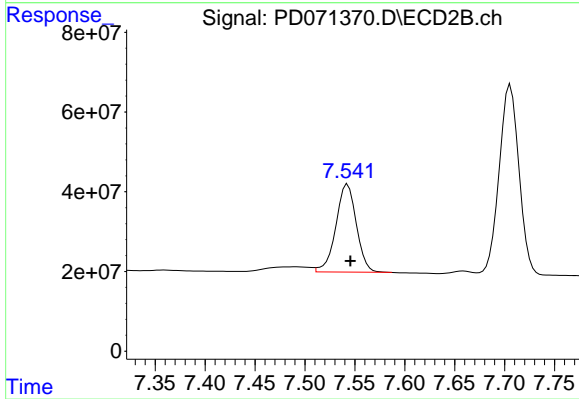
#19 Endosulfan Sulfate

R.T.: 7.213 min
 Delta R.T.: -0.003 min
 Response: 563046157
 Conc: 47.21 ng/ml



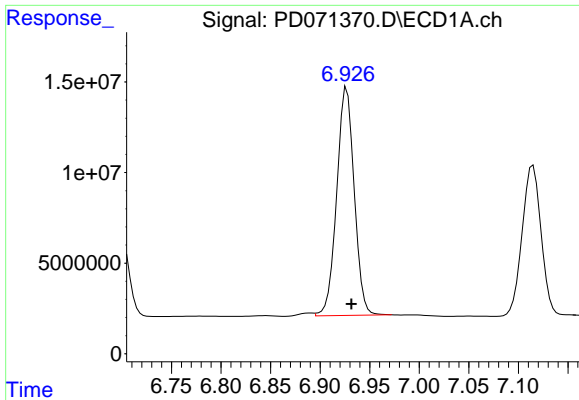
#20 Methoxychlor

R.T.: 6.699 min
 Delta R.T.: -0.004 min
 Response: 64814179
 Conc: 39.29 ng/ml



#20 Methoxychlor

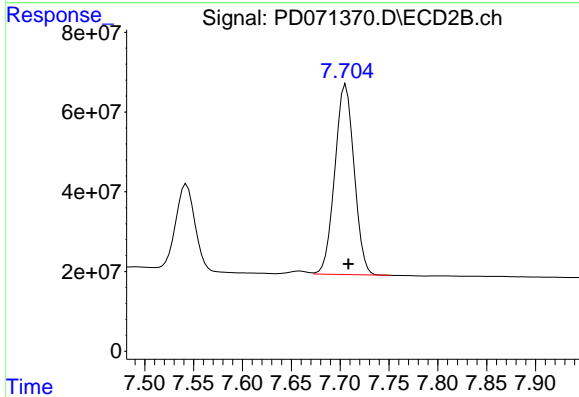
R.T.: 7.543 min
 Delta R.T.: -0.003 min
 Response: 314860074
 Conc: 45.68 ng/ml



#21 Endrin ketone

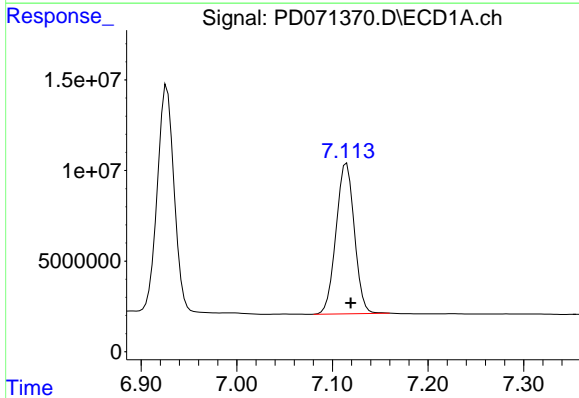
R.T.: 6.927 min
 Delta R.T.: -0.004 min
 Response: 154747558
 Conc: 47.50 ng/ml

Instrument :
 ECD_D
 ClientSampleId :
 PSTDCCC050



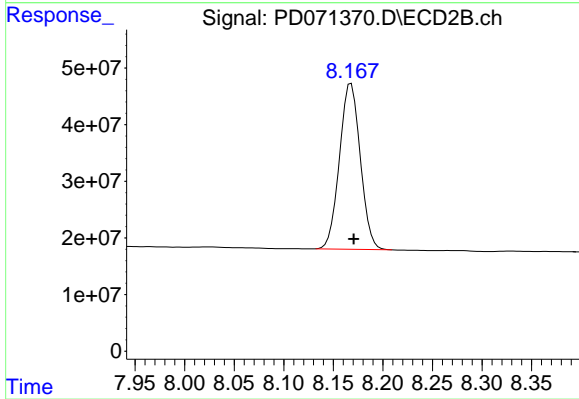
#21 Endrin ketone

R.T.: 7.706 min
 Delta R.T.: -0.003 min
 Response: 655936688
 Conc: 48.86 ng/ml



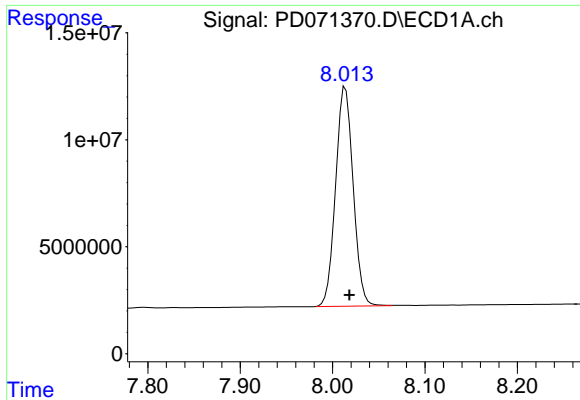
#22 Mirex

R.T.: 7.115 min
 Delta R.T.: -0.004 min
 Response: 110651465
 Conc: 45.20 ng/ml



#22 Mirex

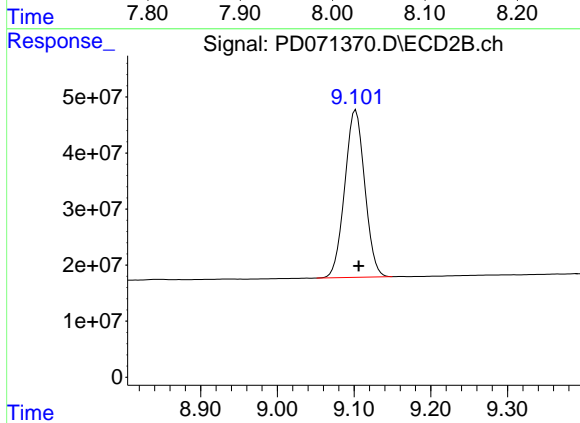
R.T.: 8.168 min
 Delta R.T.: -0.003 min
 Response: 427677113
 Conc: 49.72 ng/ml



#28 Decachlorobiphenyl

R.T.: 8.014 min
Delta R.T.: -0.005 min
Response: 135352336
Conc: 48.80 ng/ml

Instrument :
ECD_D
ClientSampleId :
PSTDCCC050



#28 Decachlorobiphenyl

R.T.: 9.102 min
Delta R.T.: -0.004 min
Response: 544105696
Conc: 52.56 ng/ml