

Data Path : Z:\pestpcbsrv\HPCHEM1\ECD\_D\Data\PD080624\  
 Data File : PD084226.D  
 Signal(s) : Signal #1: ECD1A.ch Signal #2: ECD2B.ch  
 Acq On : 05 Aug 2024 14:03  
 Operator : AR\AJ  
 Sample : I.BLK  
 Misc :  
 ALS Vial : 2 Sample Multiplier: 1

Instrument :  
 ECD\_D  
 ClientSampleId :

Integration File signal 1: autoint1.e  
 Integration File signal 2: autoint2.e  
 Quant Time: Aug 05 15:58:04 2024  
 Quant Method : Z:\pestpcbsrv\HPCHEM1\ECD\_D\Method\PD071524.M  
 Quant Title : GC Extractables  
 QLast Update : Tue Jul 16 04:22:06 2024  
 Response via : Initial Calibration  
 Integrator: ChemStation

Volume Inj. : 1 µl  
 Signal #1 Phase : ZB-MR1 Signal #2 Phase: ZB-MR2  
 Signal #1 Info : 30M x 0.32mm x0.5 Signal #2 Info : 30M x 0.32mm x 0.25µm

	Compound	RT#1	RT#2	Resp#1	Resp#2	ng/ml	ng/ml
-----							
System Monitoring Compounds							
1)	SA Tetrachlo...	3.561	2.771	17514796	107.9E6	17.129	18.762
28)	SA Decachlor...	9.114	7.894	38088140	125.0E6	16.684	19.456
Target Compounds							
2)	A alpha-BHC	0.000	3.259	0	574584	N.D.	0.065 #
3)	MA gamma-BHC...	0.000	3.601	0	170660	N.D.	0.021 #
4)	MA Heptachlor	4.933	0.000	298244	0	0.150	N.D. #
5)	MB Aldrin	5.299	4.220	124480	2135103	0.061	0.266 #
6)	B beta-BHC	0.000	3.903	0	844800	N.D.	0.240 #
7)	B delta-BHC	4.789	0.000	1345756	0	0.740	N.D. #
10)	B gamma-Chl...	5.944f	0.000	26011	0	0.013	N.D. #
14)	MA Endrin	0.000	5.642f	0	1086556	N.D.	0.164 #
20)	A Methoxychlor	0.000	6.574f	0	164645	N.D.	0.056 #
22)	Mirex	8.187f	0.000	161884	0	0.099	N.D. #
23)	Chlordane-1	0.000	3.756	0	758142	N.D.	3.242 #
24)	Chlordane-2	5.251	4.360f	135797	1475194	1.955	5.256 #
25)	Chlordane-3	5.944f	0.000	26011	0	0.086	N.D. #
-----							

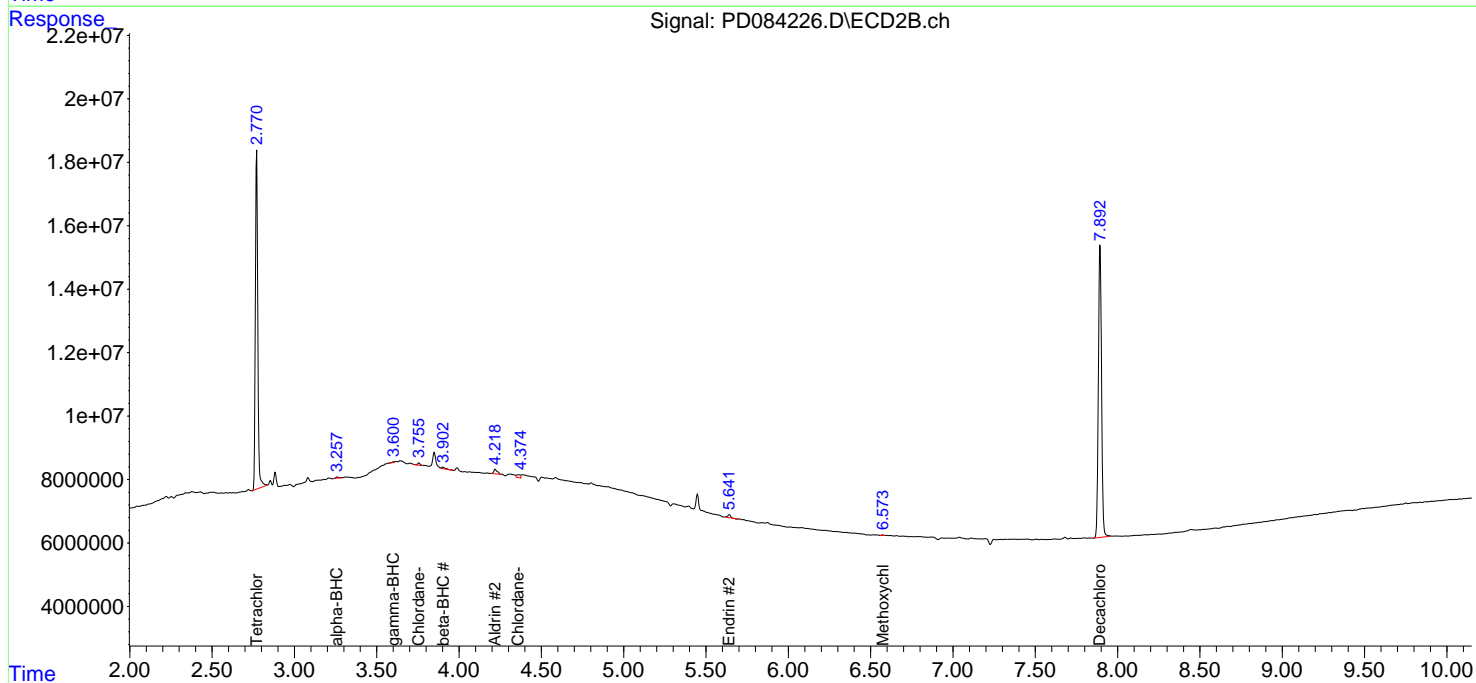
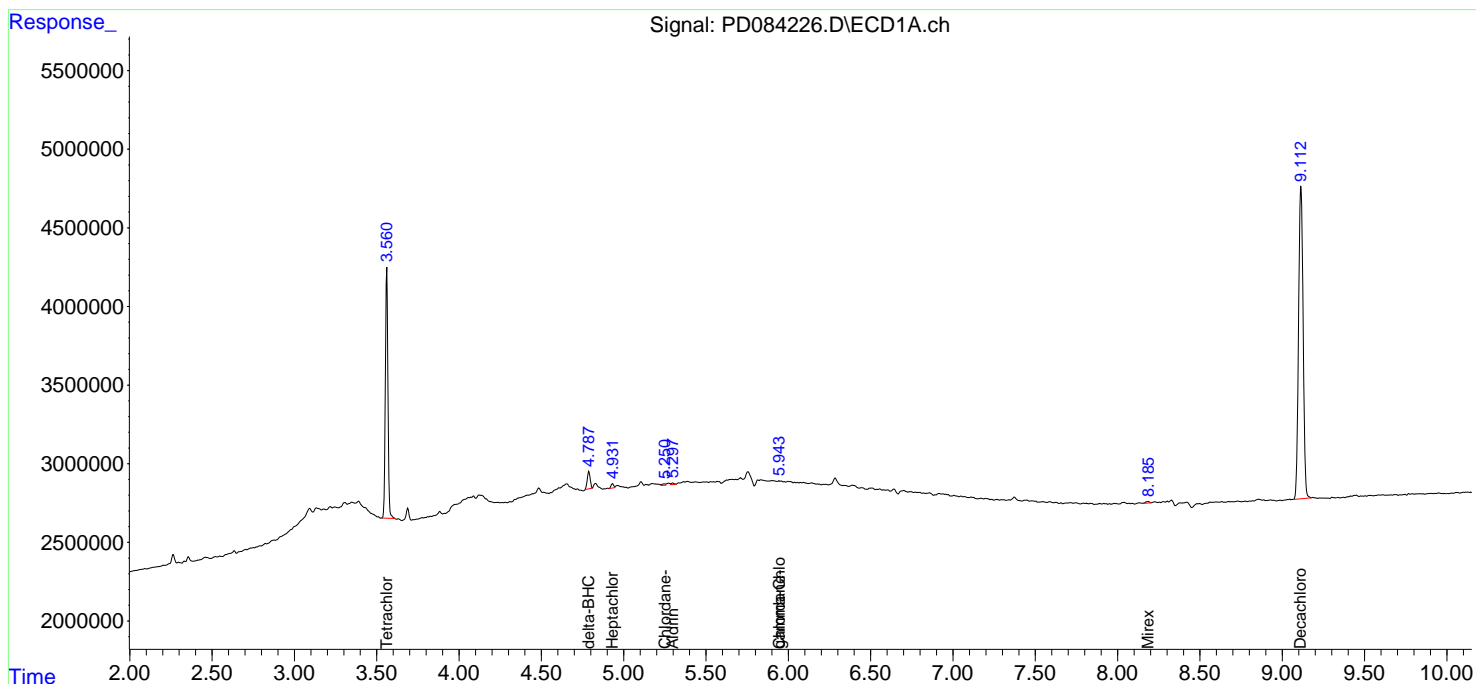
(f)=RT Delta > 1/2 Window (#)=Amounts differ by > 25% (m)=manual int.

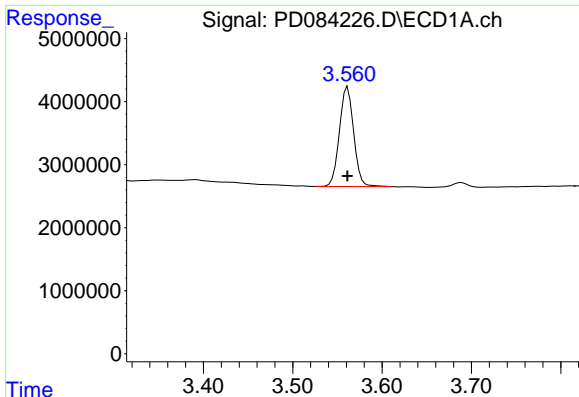
Data Path : Z:\pestpcbsrv\HPCHEM1\ECD\_D\Data\PD080624\  
 Data File : PD084226.D  
 Signal(s) : Signal #1: ECD1A.ch Signal #2: ECD2B.ch  
 Acq On : 05 Aug 2024 14:03  
 Operator : AR\AJ  
 Sample : I.BLK  
 Misc :  
 ALS Vial : 2 Sample Multiplier: 1

Instrument :  
 ECD\_D  
 ClientSampleId :

Integration File signal 1: autoint1.e  
 Integration File signal 2: autoint2.e  
 Quant Time: Aug 05 15:58:04 2024  
 Quant Method : Z:\pestpcbsrv\HPCHEM1\ECD\_D\Method\PD071524.M  
 Quant Title : GC Extractables  
 QLast Update : Tue Jul 16 04:22:06 2024  
 Response via : Initial Calibration  
 Integrator: ChemStation

Volume Inj. : 1 µl  
 Signal #1 Phase : ZB-MR1 Signal #2 Phase: ZB-MR2  
 Signal #1 Info : 30M x 0.32mm x0.5 Signal #2 Info : 30M x 0.32mm x 0.25µm

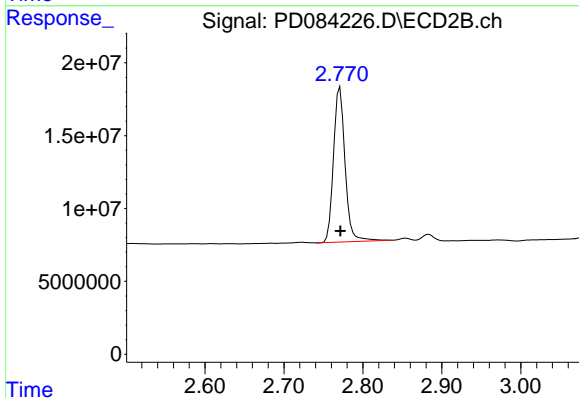




#1 Tetrachloro-m-xylene

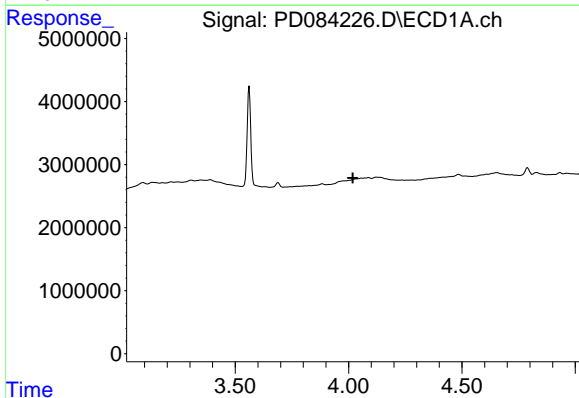
R.T.: 3.561 min  
 Delta R.T.: 0.000 min  
 Response: 17514796  
 Conc: 17.13 ng/ml

Instrument :  
 ECD\_D  
 ClientSampleId :



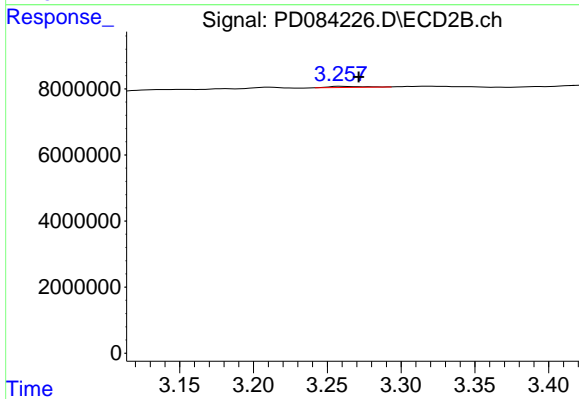
#1 Tetrachloro-m-xylene

R.T.: 2.771 min  
 Delta R.T.: 0.000 min  
 Response: 107876871  
 Conc: 18.76 ng/ml



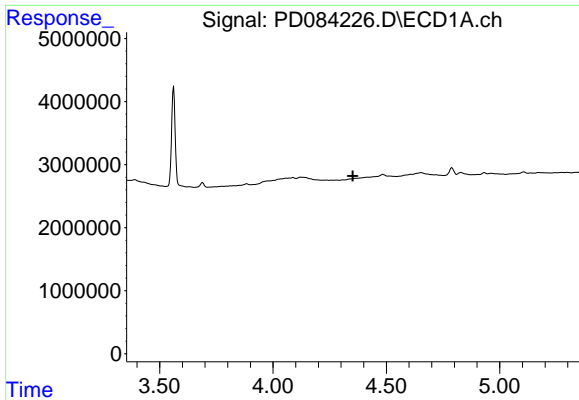
#2 alpha-BHC

R.T.: 0.000 min  
 Exp R.T. : 4.018 min  
 Response: 0  
 Conc: N.D.



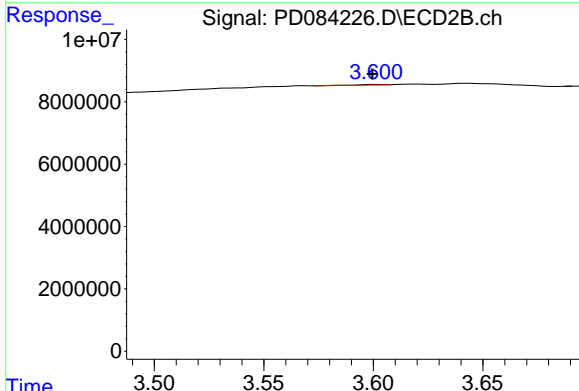
#2 alpha-BHC

R.T.: 3.259 min  
 Delta R.T.: -0.012 min  
 Response: 574584  
 Conc: 0.06 ng/ml

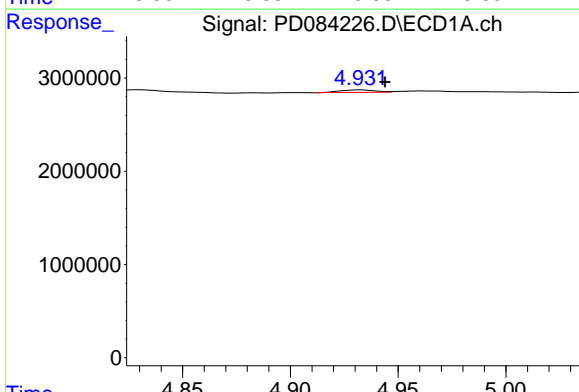


#3 gamma-BHC (Lindane)  
 R.T.: 0.000 min  
 Exp R.T.: 4.352 min  
 Response: 0  
 Conc: N.D.

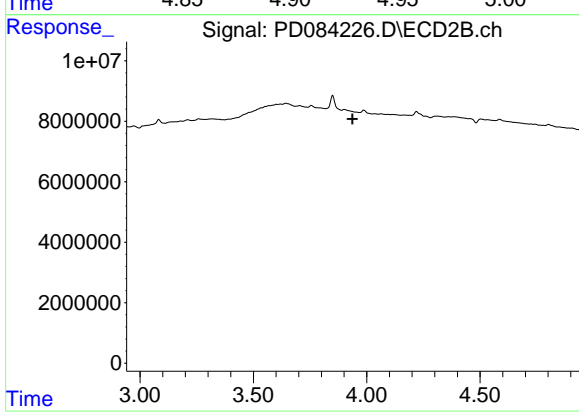
Instrument :  
 ECD\_D  
 ClientSampleId :



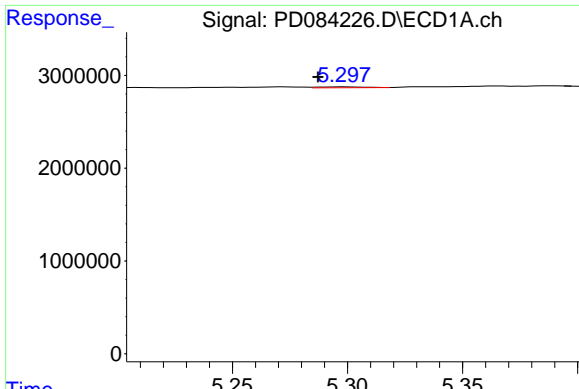
#3 gamma-BHC (Lindane)  
 R.T.: 3.601 min  
 Delta R.T.: 0.002 min  
 Response: 170660  
 Conc: 0.02 ng/ml



#4 Heptachlor  
 R.T.: 4.933 min  
 Delta R.T.: -0.011 min  
 Response: 298244  
 Conc: 0.15 ng/ml

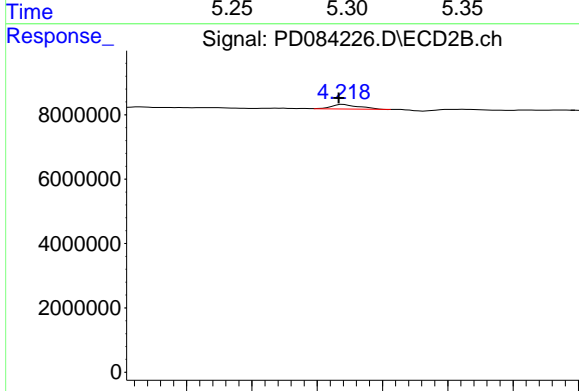


#4 Heptachlor  
 R.T.: 0.000 min  
 Exp R.T.: 3.938 min  
 Response: 0  
 Conc: N.D.

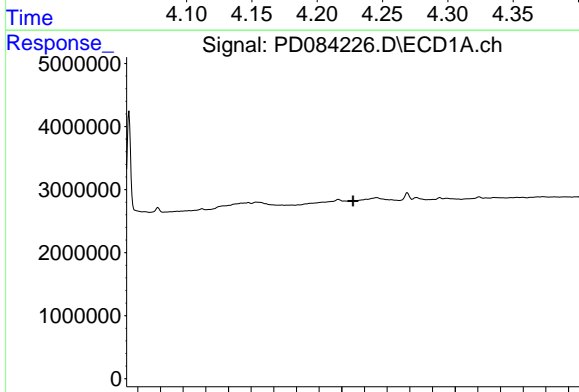


#5 Aldrin  
 R.T.: 5.299 min  
 Delta R.T.: 0.012 min  
 Response: 124480  
 Conc: 0.06 ng/ml

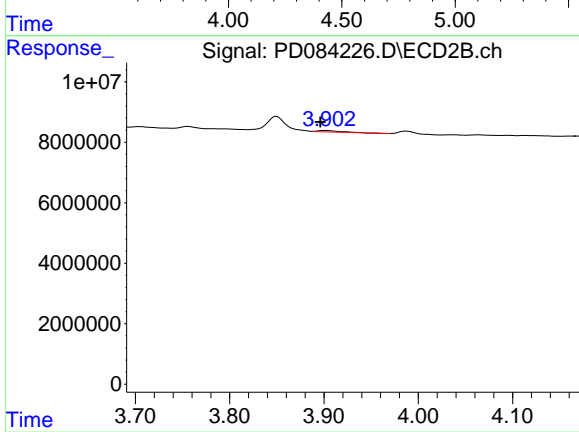
Instrument :  
 ECD\_D  
 ClientSampleId :



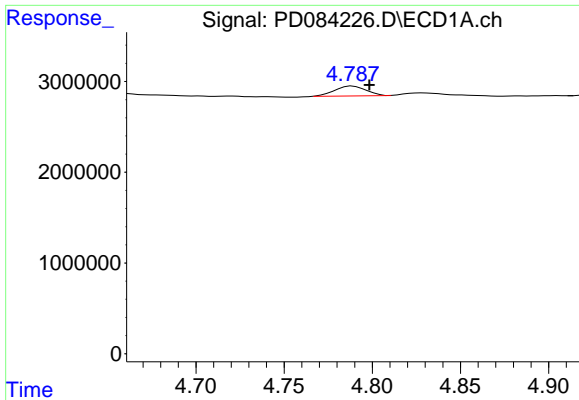
#5 Aldrin  
 R.T.: 4.220 min  
 Delta R.T.: 0.003 min  
 Response: 2135103  
 Conc: 0.27 ng/ml



#6 beta-BHC  
 R.T.: 0.000 min  
 Exp R.T. : 4.550 min  
 Response: 0  
 Conc: N.D.



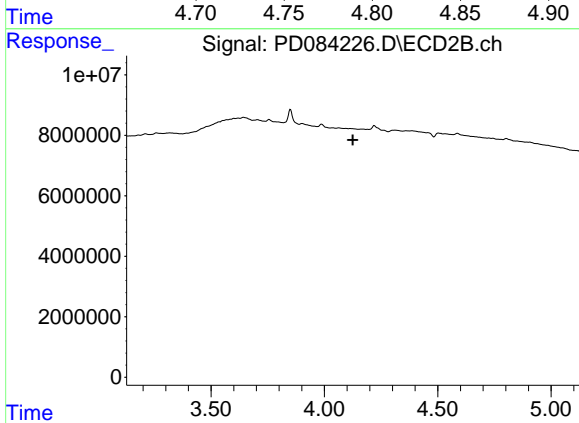
#6 beta-BHC  
 R.T.: 3.903 min  
 Delta R.T.: 0.006 min  
 Response: 844800  
 Conc: 0.24 ng/ml



#7 delta-BHC

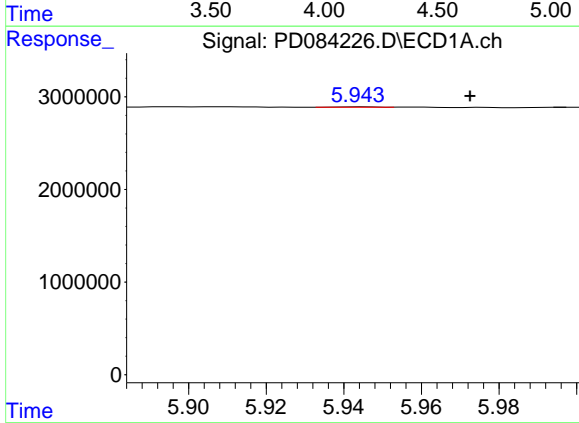
R.T.: 4.789 min  
 Delta R.T.: -0.009 min  
 Response: 1345756  
 Conc: 0.74 ng/ml

Instrument :  
 ECD\_D  
 ClientSampleId :



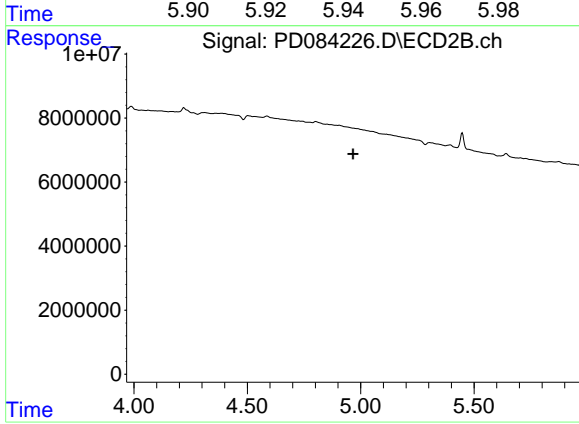
#7 delta-BHC

R.T.: 0.000 min  
 Exp R.T. : 4.126 min  
 Response: 0  
 Conc: N.D.



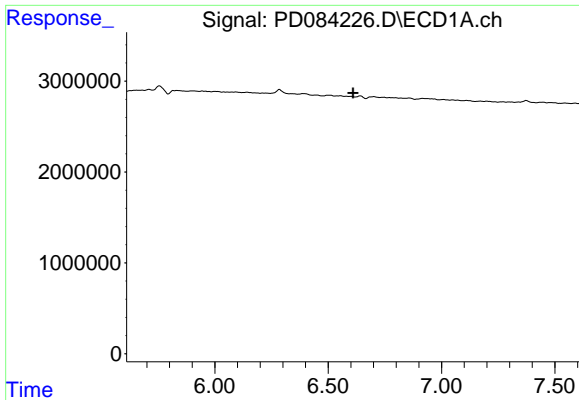
#10 gamma-Chlordane

R.T.: 5.944 min  
 Delta R.T.: -0.028 min  
 Response: 26011  
 Conc: 0.01 ng/ml



#10 gamma-Chlordane

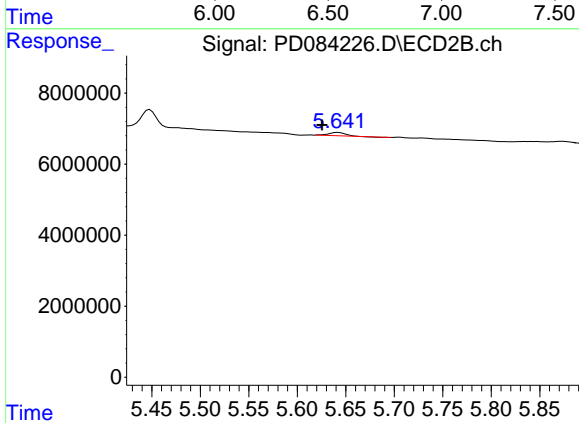
R.T.: 0.000 min  
 Exp R.T. : 4.967 min  
 Response: 0  
 Conc: N.D.



#14 Endrin

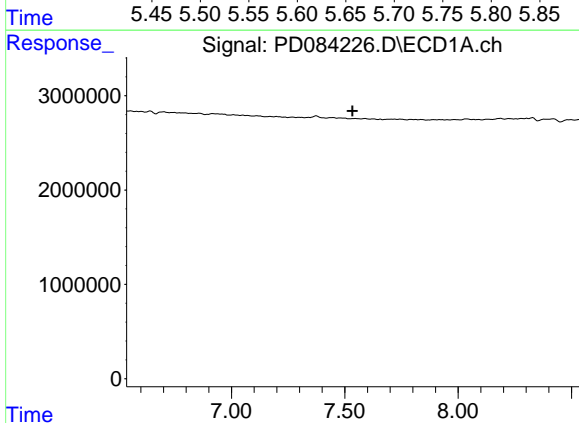
R.T.: 0.000 min  
 Exp R.T.: 6.610 min  
 Response: 0  
 Conc: N.D.

Instrument :  
 ECD\_D  
 ClientSampleId :



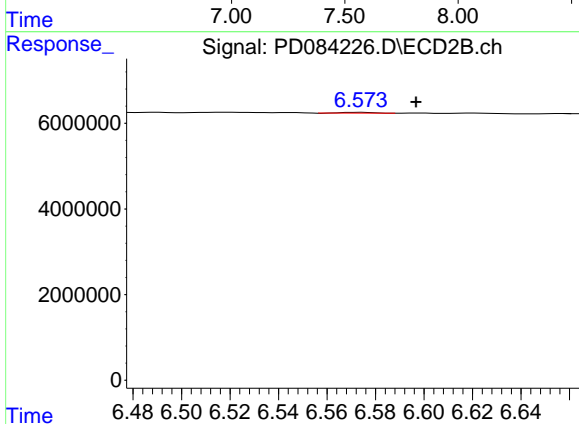
#14 Endrin

R.T.: 5.642 min  
 Delta R.T.: 0.016 min  
 Response: 1086556  
 Conc: 0.16 ng/ml



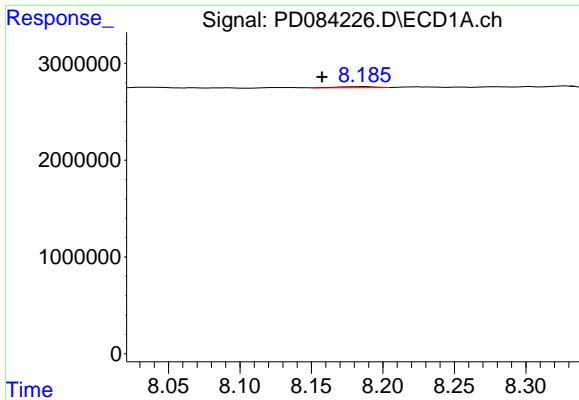
#20 Methoxychlor

R.T.: 0.000 min  
 Exp R.T.: 7.534 min  
 Response: 0  
 Conc: N.D.



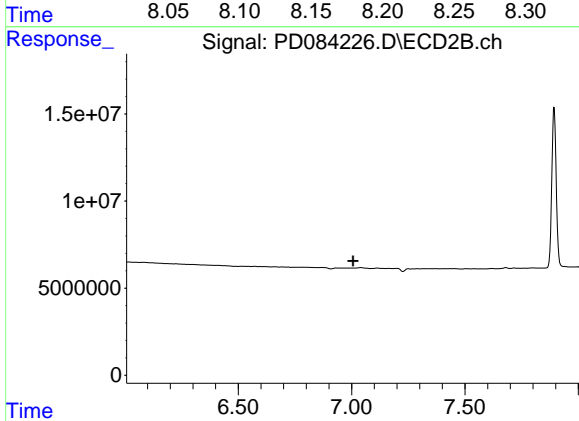
#20 Methoxychlor

R.T.: 6.574 min  
 Delta R.T.: -0.023 min  
 Response: 164645  
 Conc: 0.06 ng/ml

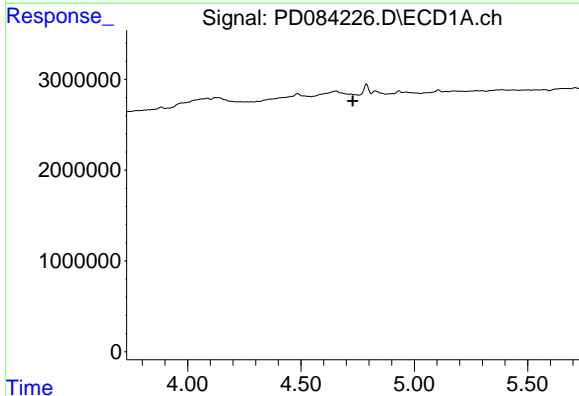


#22 Mirex  
 R.T.: 8.187 min  
 Delta R.T.: 0.030 min  
 Response: 161884  
 Conc: 0.10 ng/ml

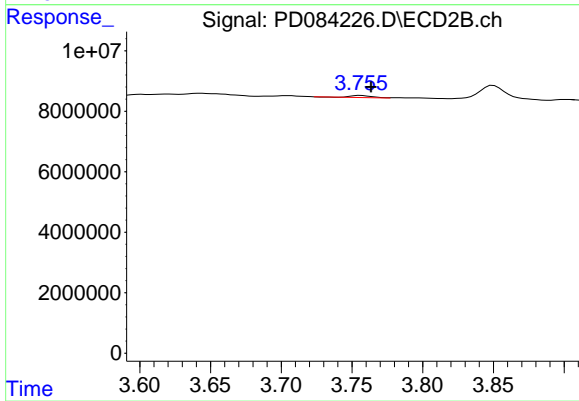
Instrument :  
 ECD\_D  
 ClientSampleId :



#22 Mirex  
 R.T.: 0.000 min  
 Exp R.T. : 7.006 min  
 Response: 0  
 Conc: N.D.

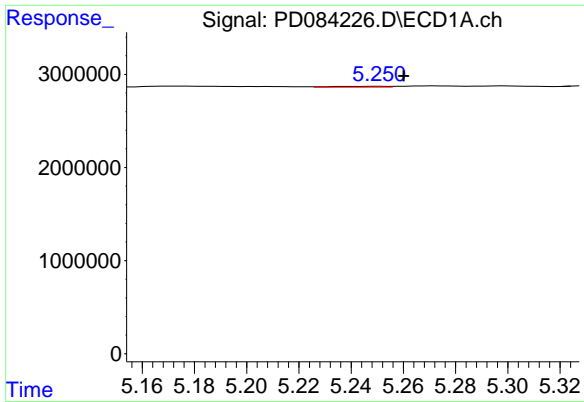


#23 Chlordane-1  
 R.T.: 0.000 min  
 Exp R.T. : 4.728 min  
 Response: 0  
 Conc: N.D.



#23 Chlordane-1  
 R.T.: 3.756 min  
 Delta R.T.: -0.007 min  
 Response: 758142  
 Conc: 3.24 ng/ml

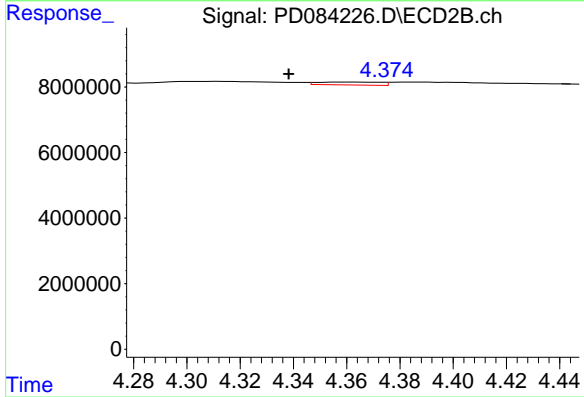




#24 Chlordane-2

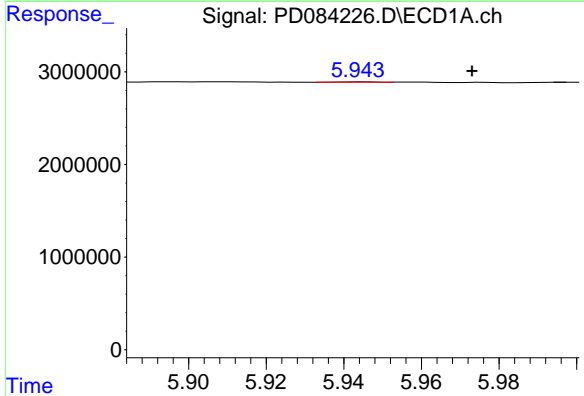
R.T.: 5.251 min  
 Delta R.T.: -0.010 min  
 Response: 135797  
 Conc: 1.95 ng/ml

Instrument :  
 ECD\_D  
 ClientSampleId :



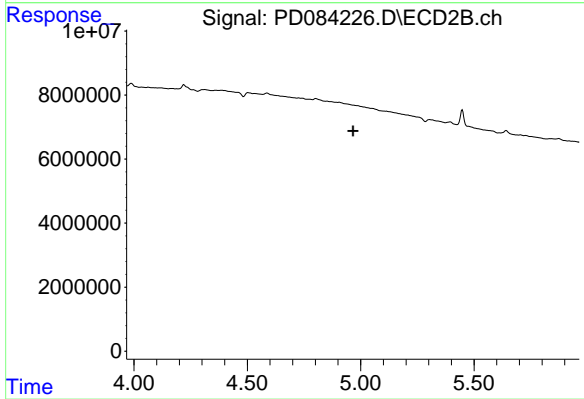
#24 Chlordane-2

R.T.: 4.360 min  
 Delta R.T.: 0.022 min  
 Response: 1475194  
 Conc: 5.26 ng/ml



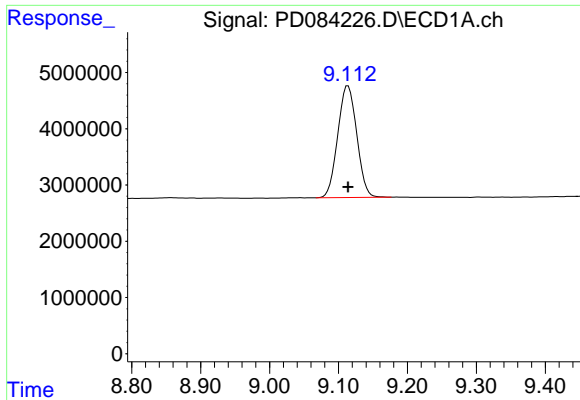
#25 Chlordane-3

R.T.: 5.944 min  
 Delta R.T.: -0.029 min  
 Response: 26011  
 Conc: 0.09 ng/ml



#25 Chlordane-3

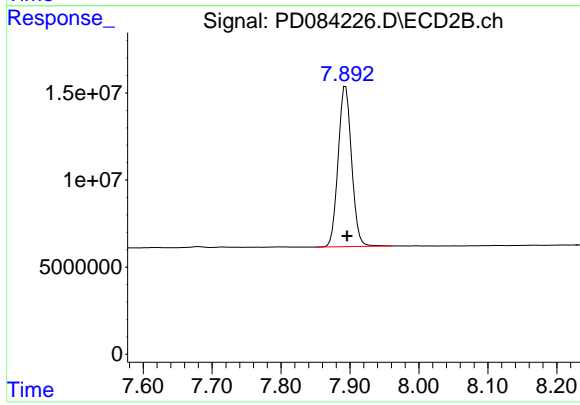
R.T.: 0.000 min  
 Exp R.T. : 4.966 min  
 Response: 0  
 Conc: N.D.



#28 Decachlorobiphenyl

R.T.: 9.114 min  
Delta R.T.: 0.000 min  
Response: 38088140  
Conc: 16.68 ng/ml

Instrument :  
ECD\_D  
ClientSampleId :



#28 Decachlorobiphenyl

R.T.: 7.894 min  
Delta R.T.: -0.002 min  
Response: 124950191  
Conc: 19.46 ng/ml