

Data Path : Z:\pestpcbsrv\HPCHEM1\ECD_D\Data\PD080624\
 Data File : PD084238.D
 Signal(s) : Signal #1: ECD1A.ch Signal #2: ECD2B.ch
 Acq On : 05 Aug 2024 17:25
 Operator : AR\AJ
 Sample : P3390-07
 Misc : PEST LOD 1PPB/WATER
 ALS Vial : 14 Sample Multiplier: 1

Instrument :
 ECD_D
ClientSampleId :
 LOD-MDL-WATER-01-QT3-2024

Manual Integrations
APPROVED
 Reviewed By :Abdul Mirza 08/06/2024
 Supervised By :Ankita Jodhani 08/06/2024

Integration File signal 1: autoint1.e
 Integration File signal 2: autoint2.e
 Quant Time: Aug 06 01:22:43 2024
 Quant Method : Z:\pestpcbsrv\HPCHEM1\ECD_D\Method\PD071524.M
 Quant Title : GC Extractables
 QLast Update : Tue Jul 16 04:22:06 2024
 Response via : Initial Calibration
 Integrator: ChemStation

Volume Inj. : 1 µl
 Signal #1 Phase : ZB-MR1 Signal #2 Phase: ZB-MR2
 Signal #1 Info : 30M x 0.32mm x0.5 Signal #2 Info : 30M x 0.32mm x 0.25µm

Compound	RT#1	RT#2	Resp#1	Resp#2	ng/ml	ng/ml

System Monitoring Compounds						
1) SA Tetrachlo...	3.561	2.771	18718234	110.2E6	18.306	19.172
28) SA Decachlor...	9.113	7.894	34029306	104.0E6	14.906	16.193
Target Compounds						
2) A alpha-BHC	4.017	3.269	1513124	8310430	0.770m	0.937m
3) MA gamma-BHC...	4.352	3.599	1562754	8994525	0.809	1.125 #
4) MA Heptachlor	4.944	3.935	2132058	8185338	1.072	1.008
5) MB Aldrin	5.285	4.213	1842362	7883480	0.905m	0.982m
6) B beta-BHC	4.548	3.894	689250	3469563	0.869m	0.986m
7) B delta-BHC	4.797	4.123	2404511	8177760	1.323	0.983 #
8) B Heptachlo...	5.713	4.714	1518195	9959214	0.852m	1.386m#
9) A Endosulfan I	6.101	5.084	1740979	7353895	0.900m	1.066
10) B gamma-Chl...	5.972	4.963	1796643	7568458	0.899	0.998m
11) B alpha-Chl...	6.051	5.028	1872620	8375728	0.939	1.122
12) B 4,4'-DDE	6.224	5.216	1519505	9615856	0.762	1.350 #
13) MA Dieldrin	6.378	5.346	2016986	5690455	0.978	0.758m
14) MA Endrin	6.606	5.622	1830314	5463177	1.025m	0.826m
15) B Endosulfa...	6.830	5.917	2266256	4696882	1.187	0.735 #
16) A 4,4'-DDD	6.740	5.770	1658764	6116906	1.095m	1.104
17) MA 4,4'-DDT	7.056	6.016	830231	5758178	0.483m	1.004m#
18) B Endrin al...	6.959	6.096	1367570	5390458	0.931	1.074
19) B Endosulfa...	7.195	6.318	1702978	10673275	0.937	1.744m#
20) A Methoxychlor	7.532	6.593	776014	1677006	0.788m	0.569m#
21) B Endrin ke...	7.680	6.825	1356777	6837963	0.657m	1.010 #
22) Mirex	8.154	7.004	1632006	5479803	1.002m	1.011

(f)=RT Delta > 1/2 Window (#)=Amounts differ by > 25% (m)=manual int.

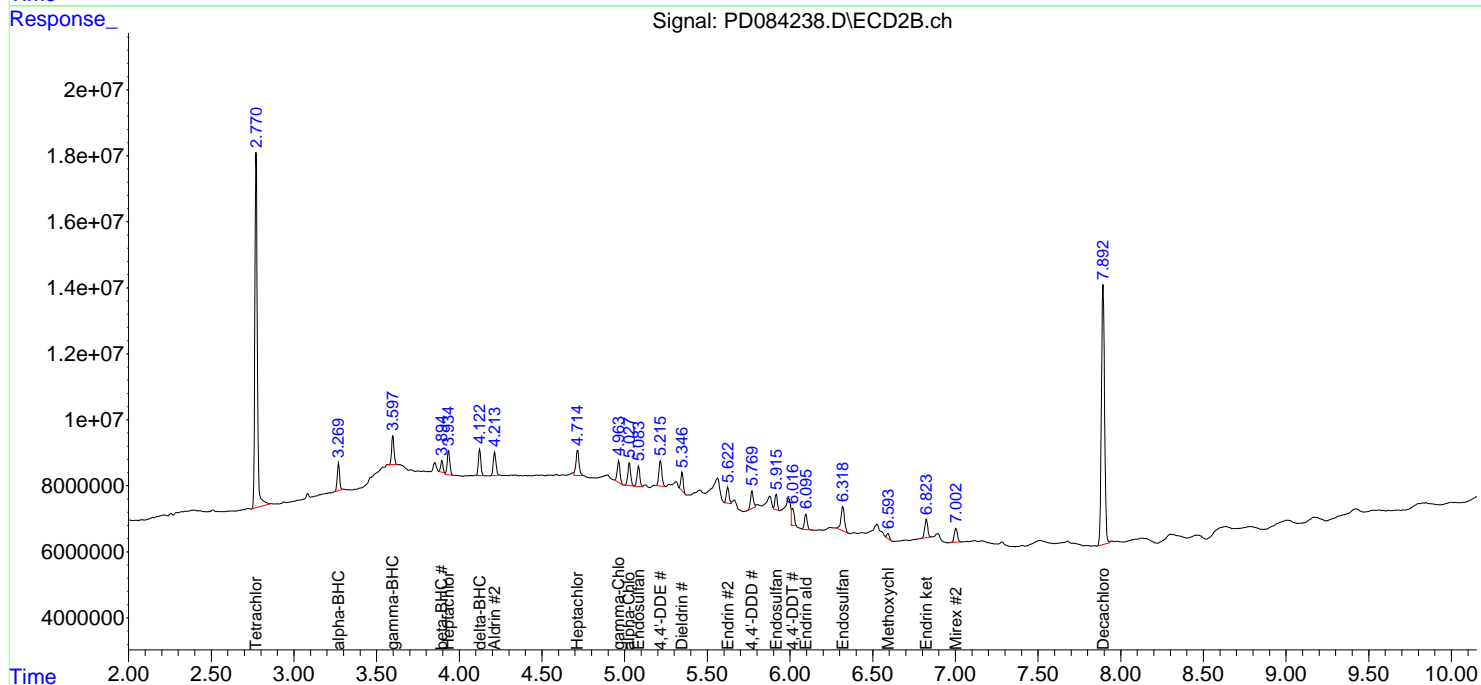
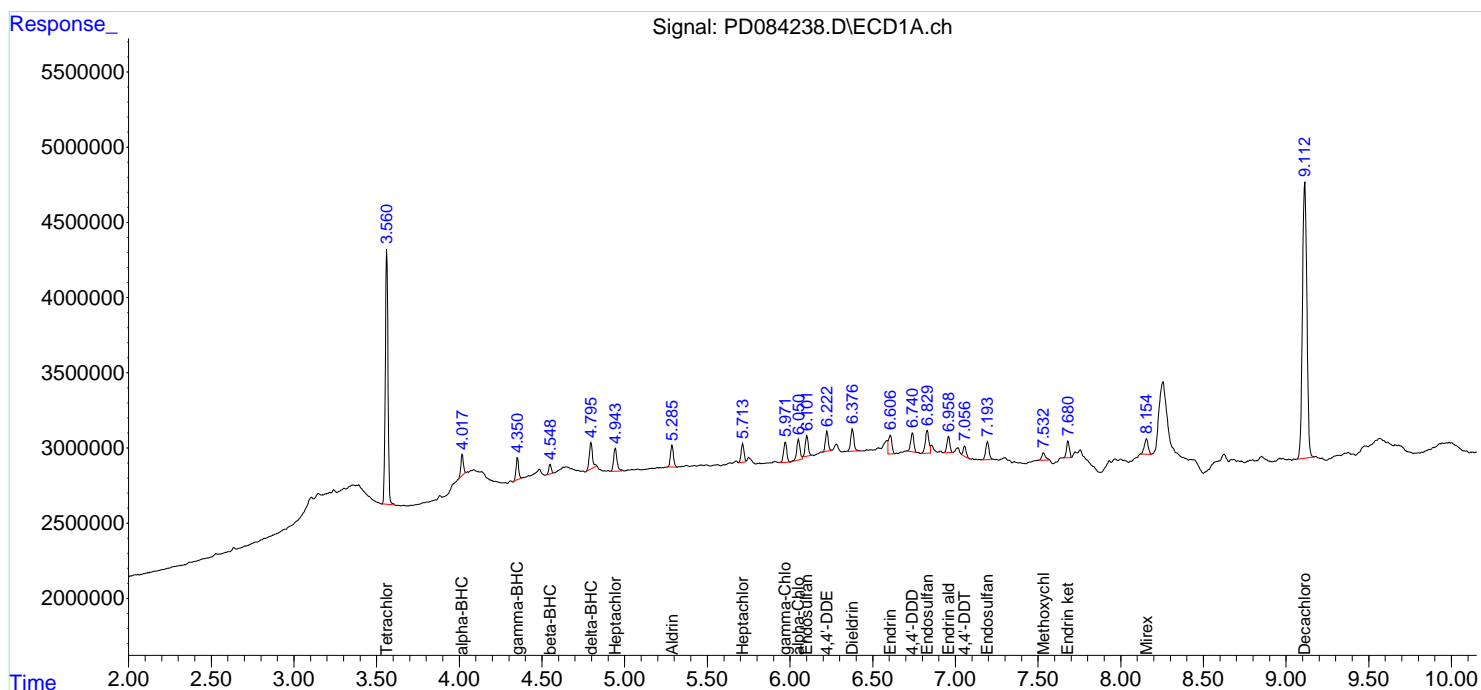
Data Path : Z:\pestpcbsrv\HPCHEM1\ECD_D\Data\PD080624\
 Data File : PD084238.D
 Signal(s) : Signal #1: ECD1A.ch Signal #2: ECD2B.ch
 Acq On : 05 Aug 2024 17:25
 Operator : AR\AJ
 Sample : P3390-07
 Misc : PEST LOD 1PPB/WATER
 ALS Vial : 14 Sample Multiplier: 1

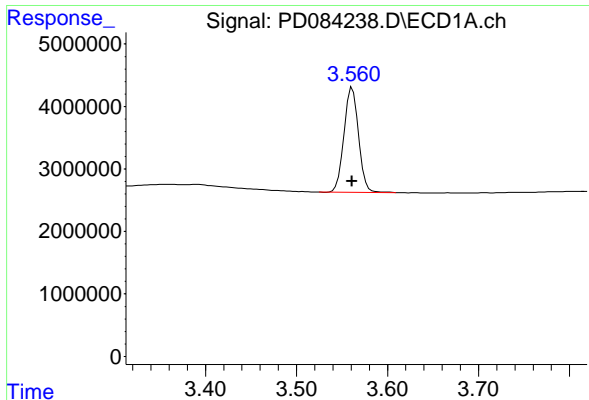
Instrument :
 ECD_D
ClientSampleId :
 LOD-MDL-WATER-01-QT3-2024

Manual Integrations
APPROVED
 Reviewed By :Abdul Mirza 08/06/2024
 Supervised By :Ankita Jodhani 08/06/2024

Integration File signal 1: autoint1.e
 Integration File signal 2: autoint2.e
 Quant Time: Aug 06 01:22:43 2024
 Quant Method : Z:\pestpcbsrv\HPCHEM1\ECD_D\Method\PD071524.M
 Quant Title : GC Extractables
 QLast Update : Tue Jul 16 04:22:06 2024
 Response via : Initial Calibration
 Integrator: ChemStation

Volume Inj. : 1 µl
 Signal #1 Phase : ZB-MR1 Signal #2 Phase: ZB-MR2
 Signal #1 Info : 30M x 0.32mm x0.5 Signal #2 Info : 30M x 0.32mm x 0.25µm





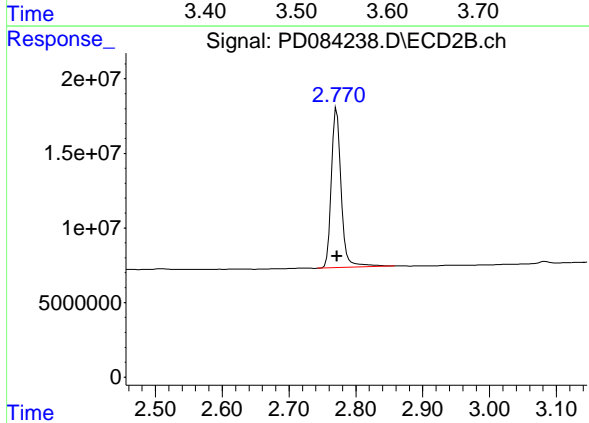
#1 Tetrachloro-m-xylene

R.T.: 3.561 min
 Delta R.T.: 0.000 min
 Response: 18718234
 Conc: 18.31 ng/ml

Instrument : ECD_D
 Client Sample Id : LOD-MDL-WATER-01-QT3-2024

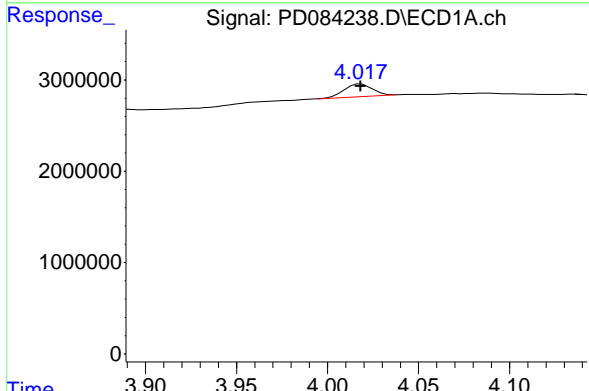
Manual Integrations
 APPROVED

Reviewed By :Abdul Mirza 08/06/2024
 Supervised By :Ankita Jodhani 08/06/2024



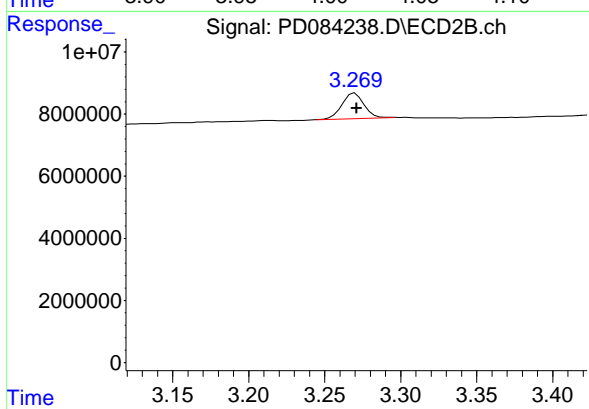
#1 Tetrachloro-m-xylene

R.T.: 2.771 min
 Delta R.T.: 0.000 min
 Response: 110233406
 Conc: 19.17 ng/ml



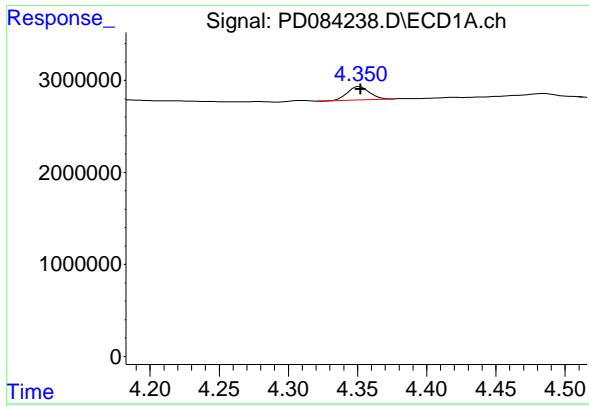
#2 alpha-BHC

R.T.: 4.017 min
 Delta R.T.: -0.001 min
 Response: 1513124
 Conc: 0.77 ng/ml m



#2 alpha-BHC

R.T.: 3.269 min
 Delta R.T.: -0.003 min
 Response: 8310430
 Conc: 0.94 ng/ml m



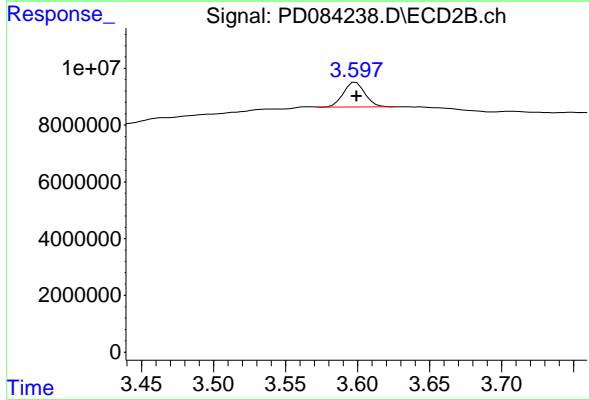
#3 gamma-BHC (Lindane)

R.T.: 4.352 min
 Delta R.T.: 0.000 min
 Response: 1562754
 Conc: 0.81 ng/ml

Instrument : ECD_D
 Client Sample Id : LOD-MDL-WATER-01-QT3-2024

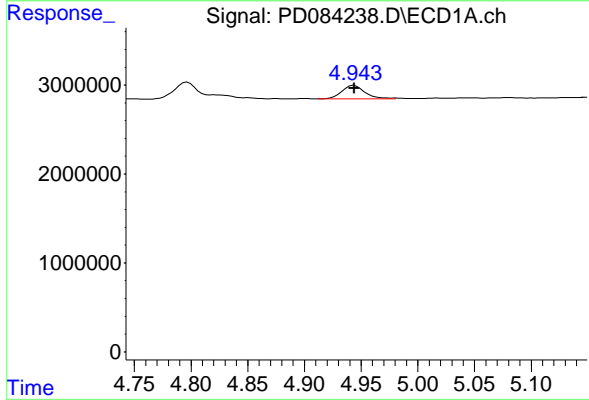
Manual Integrations
 APPROVED

Reviewed By :Abdul Mirza 08/06/2024
 Supervised By :Ankita Jodhani 08/06/2024



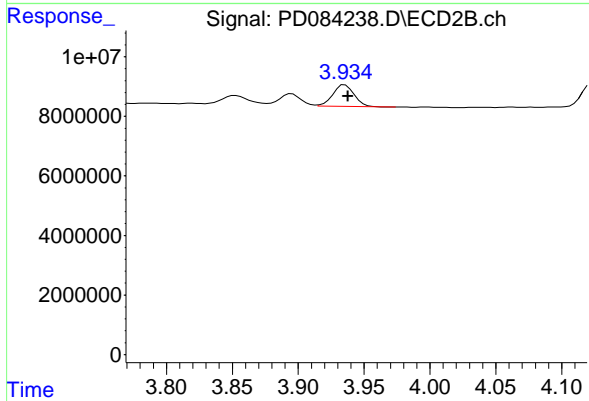
#3 gamma-BHC (Lindane)

R.T.: 3.599 min
 Delta R.T.: 0.000 min
 Response: 8994525
 Conc: 1.12 ng/ml



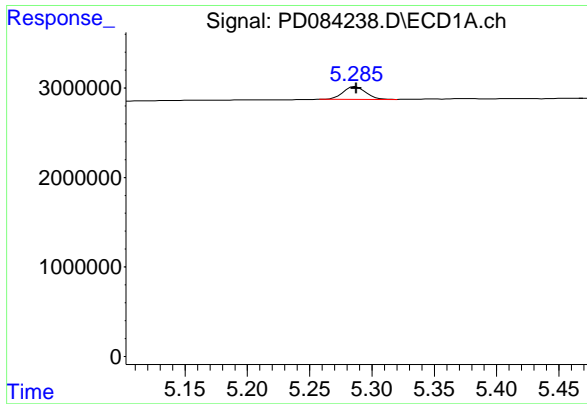
#4 Heptachlor

R.T.: 4.944 min
 Delta R.T.: 0.000 min
 Response: 2132058
 Conc: 1.07 ng/ml



#4 Heptachlor

R.T.: 3.935 min
 Delta R.T.: -0.002 min
 Response: 8185338
 Conc: 1.01 ng/ml



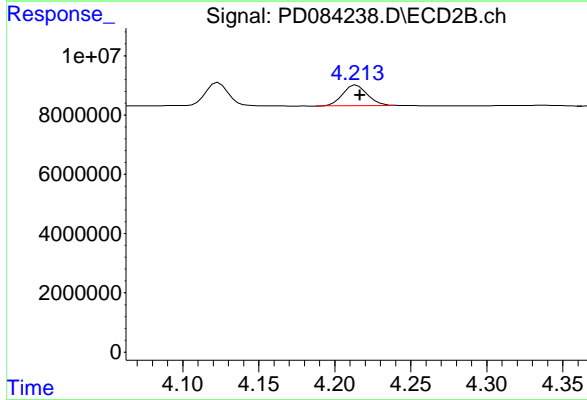
#5 Aldrin

R.T.: 5.285 min
 Delta R.T.: -0.002 min
 Response: 1842362
 Conc: 0.91 ng/ml

Instrument : ECD_D
 ClientSampleId : LOD-MDL-WATER-01-QT3-2024

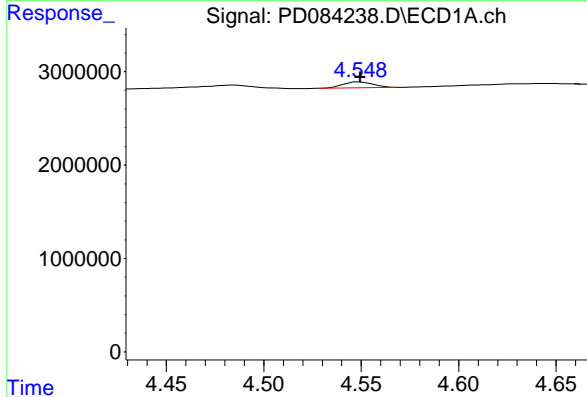
Manual Integrations
 APPROVED

Reviewed By :Abdul Mirza 08/06/2024
 Supervised By :Ankita Jodhani 08/06/2024



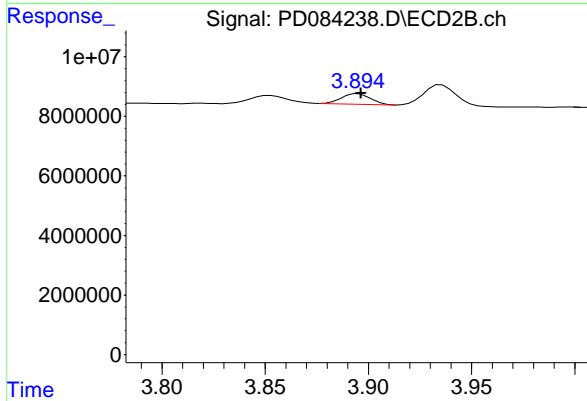
#5 Aldrin

R.T.: 4.213 min
 Delta R.T.: -0.004 min
 Response: 7883480
 Conc: 0.98 ng/ml m



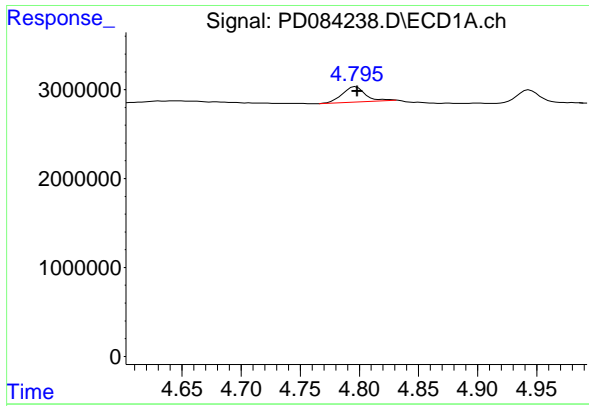
#6 beta-BHC

R.T.: 4.548 min
 Delta R.T.: -0.001 min
 Response: 689250
 Conc: 0.87 ng/ml m



#6 beta-BHC

R.T.: 3.894 min
 Delta R.T.: -0.003 min
 Response: 3469563
 Conc: 0.99 ng/ml m



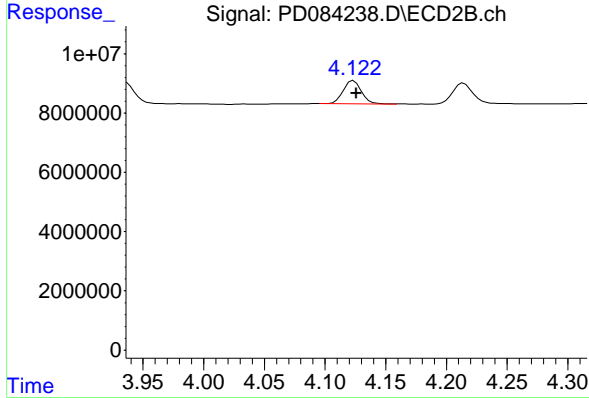
#7 delta-BHC

R.T.: 4.797 min
 Delta R.T.: -0.002 min
 Response: 2404511
 Conc: 1.32 ng/ml

Instrument : ECD_D
 ClientSampleId : LOD-MDL-WATER-01-QT3-2024

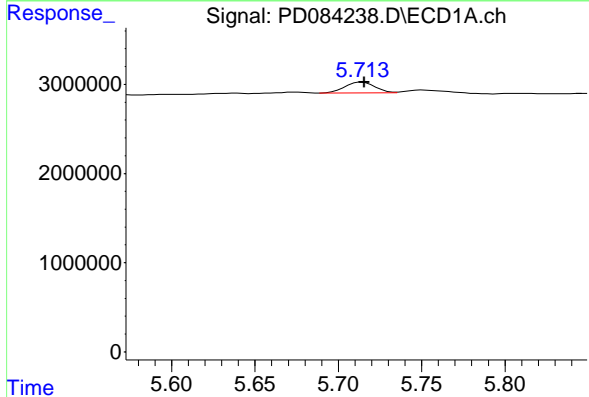
Manual Integrations
 APPROVED

Reviewed By :Abdul Mirza 08/06/2024
 Supervised By :Ankita Jodhani 08/06/2024



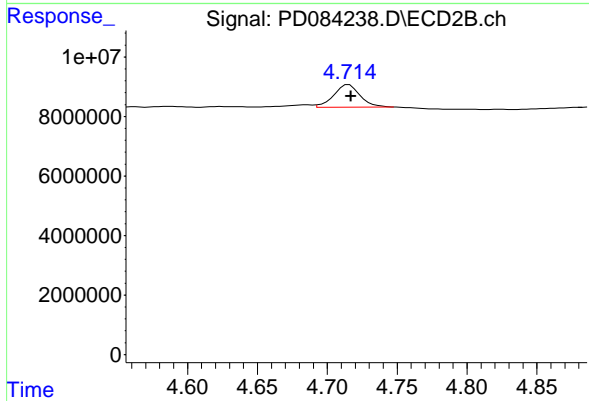
#7 delta-BHC

R.T.: 4.123 min
 Delta R.T.: -0.002 min
 Response: 8177760
 Conc: 0.98 ng/ml



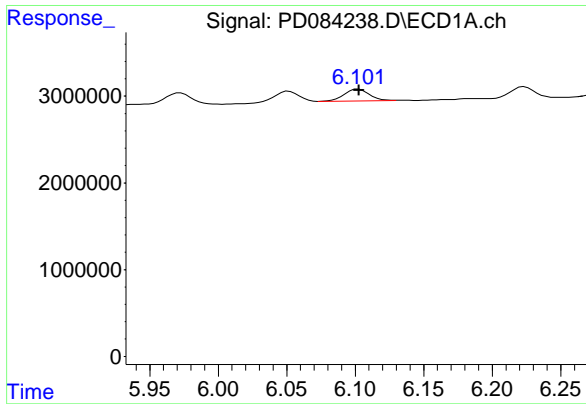
#8 Heptachlor epoxide

R.T.: 5.713 min
 Delta R.T.: -0.003 min
 Response: 1518195
 Conc: 0.85 ng/ml m



#8 Heptachlor epoxide

R.T.: 4.714 min
 Delta R.T.: -0.003 min
 Response: 9959214
 Conc: 1.39 ng/ml m



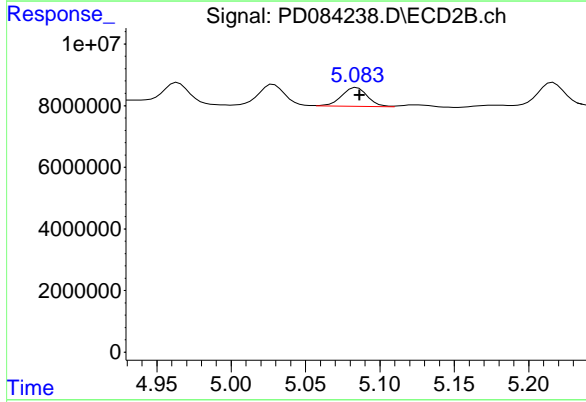
#9 Endosulfan I

R.T.: 6.101 min
 Delta R.T.: -0.002 min
 Response: 1740979
 Conc: 0.90 ng/ml

Instrument : ECD_D
 ClientSampleId : LOD-MDL-WATER-01-QT3-2024

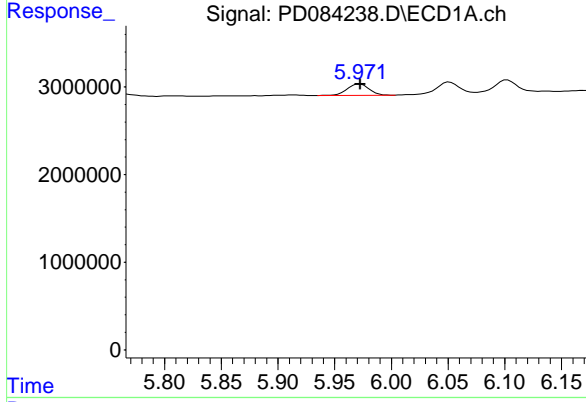
Manual Integrations
 APPROVED

Reviewed By :Abdul Mirza 08/06/2024
 Supervised By :Ankita Jodhani 08/06/2024



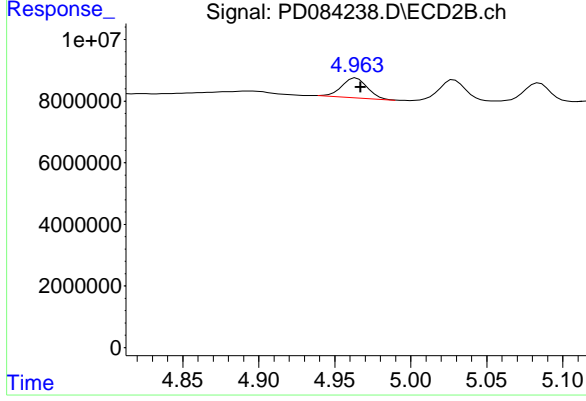
#9 Endosulfan I

R.T.: 5.084 min
 Delta R.T.: -0.002 min
 Response: 7353895
 Conc: 1.07 ng/ml



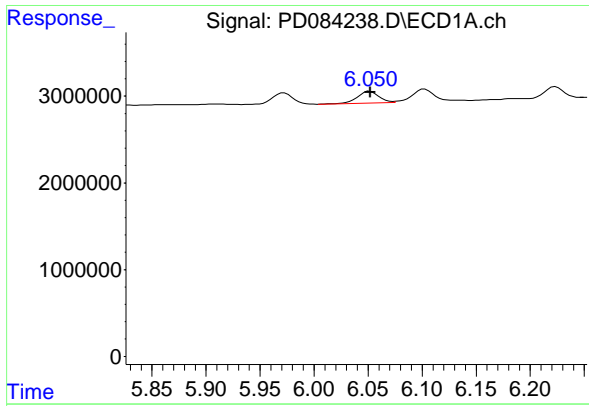
#10 gamma-Chlordane

R.T.: 5.972 min
 Delta R.T.: 0.000 min
 Response: 1796643
 Conc: 0.90 ng/ml



#10 gamma-Chlordane

R.T.: 4.963 min
 Delta R.T.: -0.004 min
 Response: 7568458
 Conc: 1.00 ng/ml m



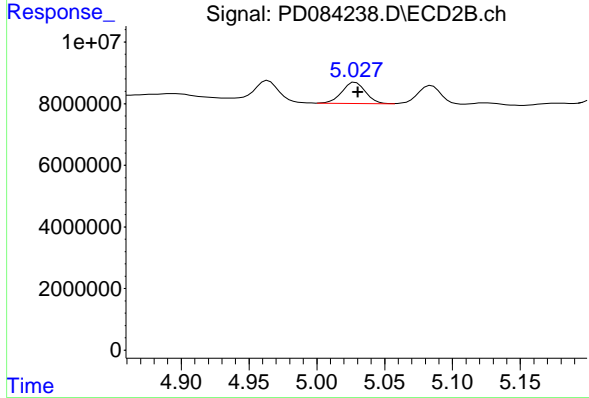
#11 alpha-Chlordane

R.T.: 6.051 min
 Delta R.T.: 0.000 min
 Response: 1872620
 Conc: 0.94 ng/ml

Instrument : ECD_D
 ClientSampleId : LOD-MDL-WATER-01-QT3-2024

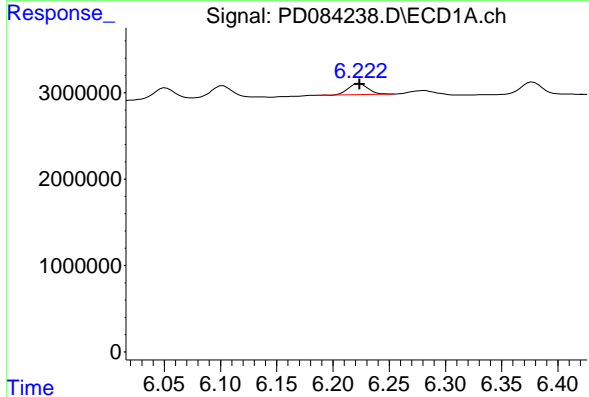
Manual Integrations
 APPROVED

Reviewed By :Abdul Mirza 08/06/2024
 Supervised By :Ankita Jodhani 08/06/2024



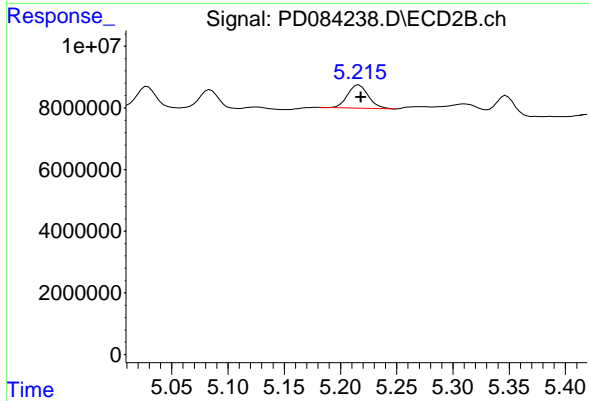
#11 alpha-Chlordane

R.T.: 5.028 min
 Delta R.T.: -0.002 min
 Response: 8375728
 Conc: 1.12 ng/ml



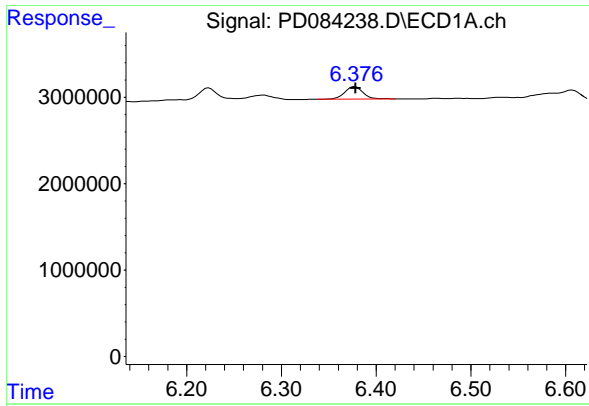
#12 4,4'-DDE

R.T.: 6.224 min
 Delta R.T.: 0.000 min
 Response: 1519505
 Conc: 0.76 ng/ml



#12 4,4'-DDE

R.T.: 5.216 min
 Delta R.T.: -0.002 min
 Response: 9615856
 Conc: 1.35 ng/ml



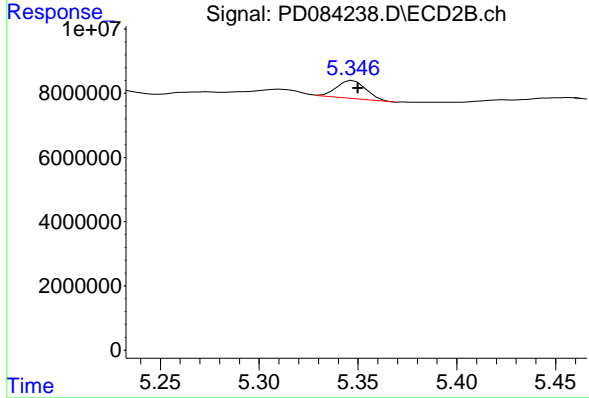
#13 Dieldrin

R.T.: 6.378 min
 Delta R.T.: 0.000 min
 Response: 2016986
 Conc: 0.98 ng/ml

Instrument : ECD_D
 Client Sample Id : LOD-MDL-WATER-01-QT3-2024

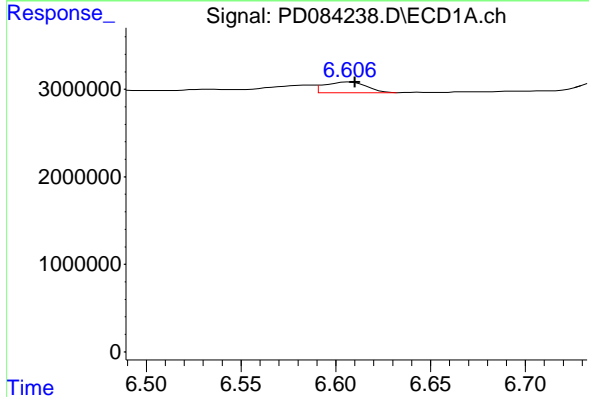
Manual Integrations
 APPROVED

Reviewed By :Abdul Mirza 08/06/2024
 Supervised By :Ankita Jodhani 08/06/2024



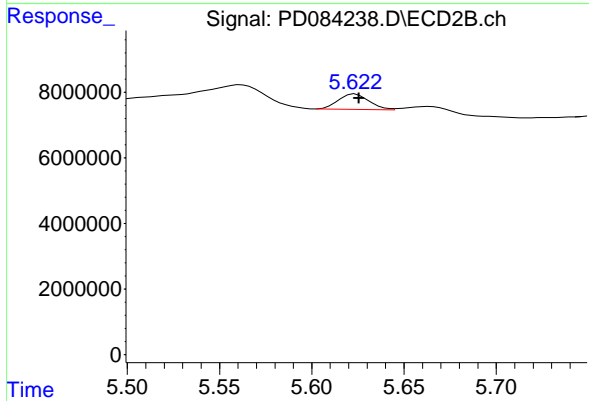
#13 Dieldrin

R.T.: 5.346 min
 Delta R.T.: -0.004 min
 Response: 5690455
 Conc: 0.76 ng/ml m



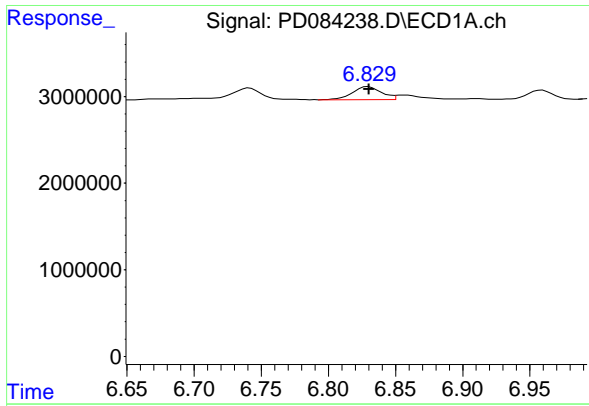
#14 Endrin

R.T.: 6.606 min
 Delta R.T.: -0.004 min
 Response: 1830314
 Conc: 1.03 ng/ml m



#14 Endrin

R.T.: 5.622 min
 Delta R.T.: -0.003 min
 Response: 5463177
 Conc: 0.83 ng/ml m



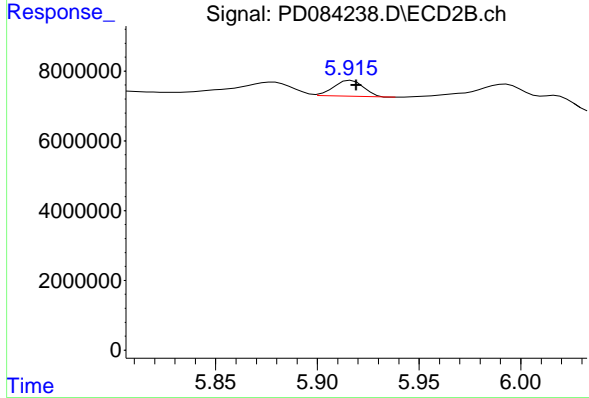
#15 Endosulfan II

R.T.: 6.830 min
 Delta R.T.: 0.000 min
 Response: 2266256
 Conc: 1.19 ng/ml

Instrument : ECD_D
 ClientSampleId : LOD-MDL-WATER-01-QT3-2024

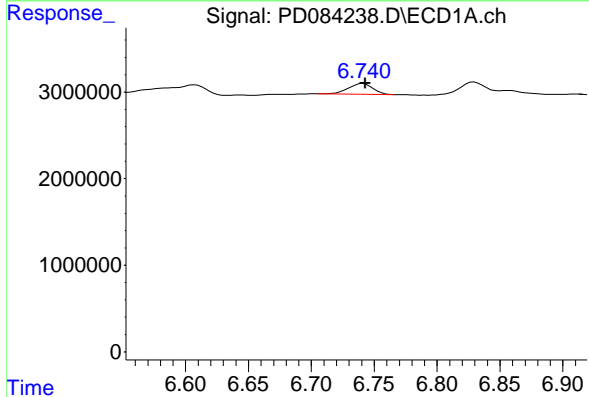
Manual Integrations
 APPROVED

Reviewed By :Abdul Mirza 08/06/2024
 Supervised By :Ankita Jodhani 08/06/2024



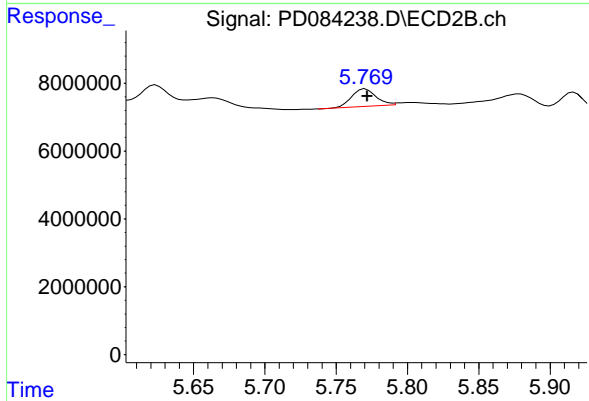
#15 Endosulfan II

R.T.: 5.917 min
 Delta R.T.: -0.002 min
 Response: 4696882
 Conc: 0.74 ng/ml



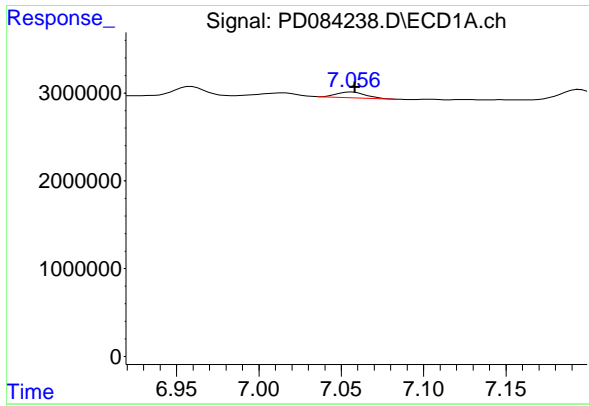
#16 4,4'-DDD

R.T.: 6.740 min
 Delta R.T.: -0.003 min
 Response: 1658764
 Conc: 1.09 ng/ml m



#16 4,4'-DDD

R.T.: 5.770 min
 Delta R.T.: -0.002 min
 Response: 6116906
 Conc: 1.10 ng/ml



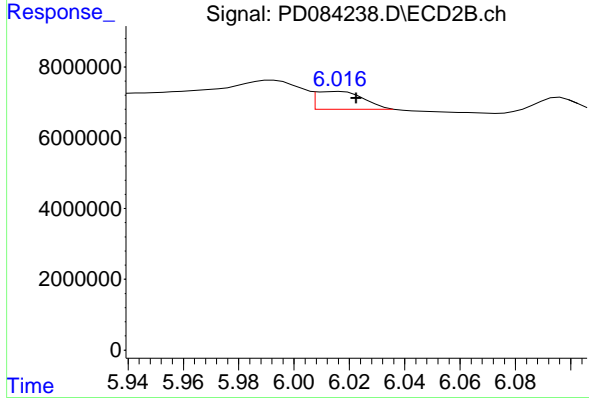
#17 4,4' -DDT

R.T.: 7.056 min
 Delta R.T.: -0.002 min
 Response: 830231
 Conc: 0.48 ng/ml

Instrument : ECD_D
 Client Sample Id : LOD-MDL-WATER-01-QT3-2024

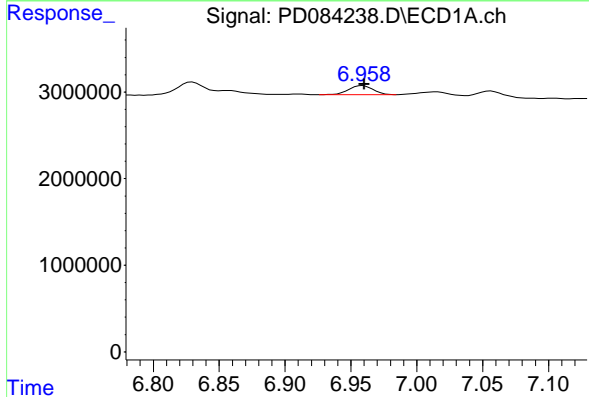
Manual Integrations
 APPROVED

Reviewed By :Abdul Mirza 08/06/2024
 Supervised By :Ankita Jodhani 08/06/2024



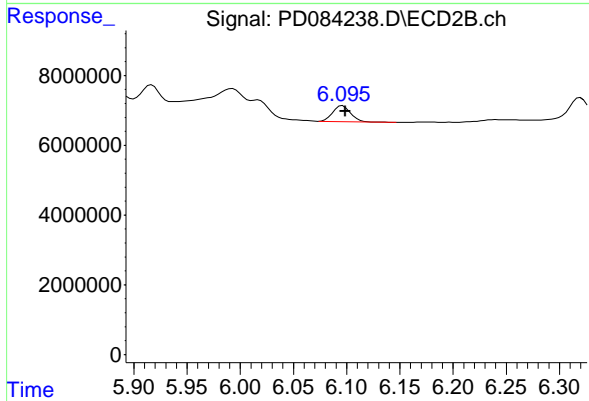
#17 4,4' -DDT

R.T.: 6.016 min
 Delta R.T.: -0.007 min
 Response: 5758178
 Conc: 1.00 ng/ml m



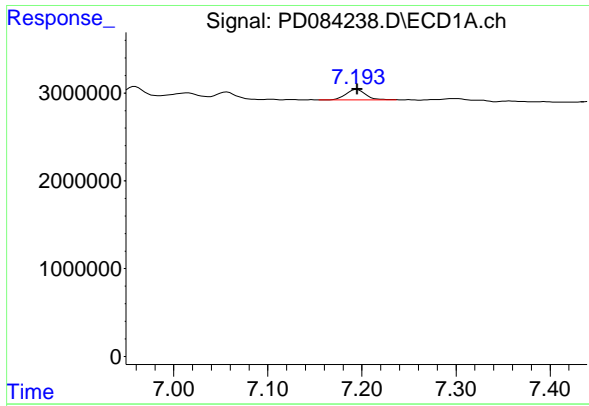
#18 Endrin aldehyde

R.T.: 6.959 min
 Delta R.T.: -0.001 min
 Response: 1367570
 Conc: 0.93 ng/ml



#18 Endrin aldehyde

R.T.: 6.096 min
 Delta R.T.: -0.002 min
 Response: 5390458
 Conc: 1.07 ng/ml



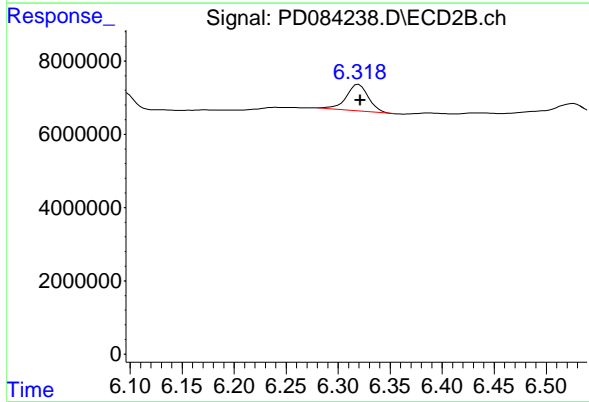
#19 Endosulfan Sulfate

R.T.: 7.195 min
 Delta R.T.: 0.000 min
 Response: 1702978
 Conc: 0.94 ng/ml

Instrument : ECD_D
 ClientSampleId : LOD-MDL-WATER-01-QT3-2024

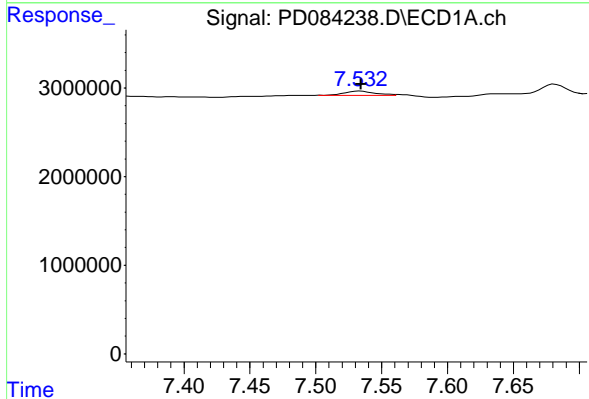
Manual Integrations
 APPROVED

Reviewed By :Abdul Mirza 08/06/2024
 Supervised By :Ankita Jodhani 08/06/2024



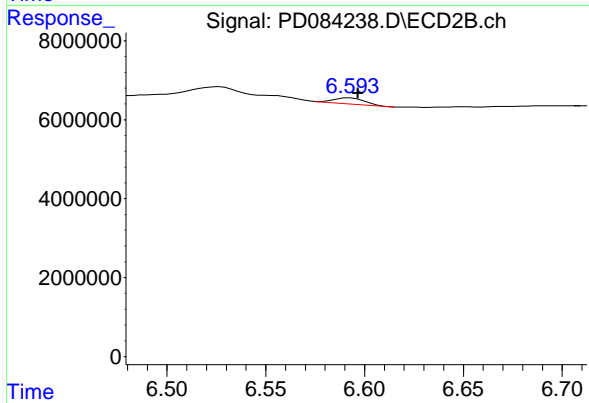
#19 Endosulfan Sulfate

R.T.: 6.318 min
 Delta R.T.: -0.003 min
 Response: 10673275
 Conc: 1.74 ng/ml m



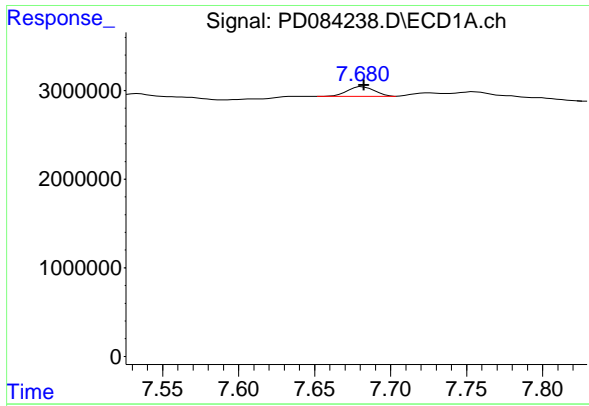
#20 Methoxychlor

R.T.: 7.532 min
 Delta R.T.: -0.002 min
 Response: 776014
 Conc: 0.79 ng/ml m



#20 Methoxychlor

R.T.: 6.593 min
 Delta R.T.: -0.004 min
 Response: 1677006
 Conc: 0.57 ng/ml m



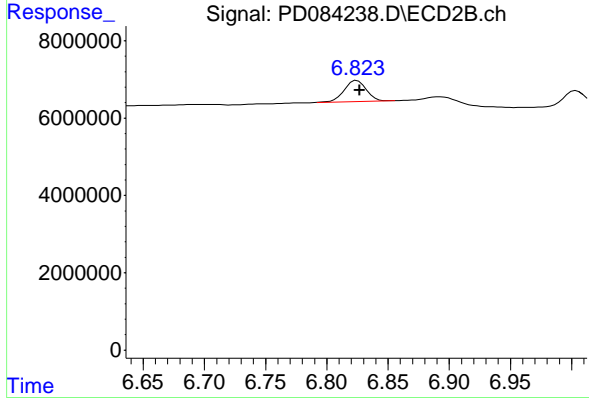
#21 Endrin ketone

R.T.: 7.680 min
 Delta R.T.: -0.003 min
 Response: 1356777
 Conc: 0.66 ng/ml

Instrument : ECD_D
 ClientSampleId : LOD-MDL-WATER-01-QT3-2024

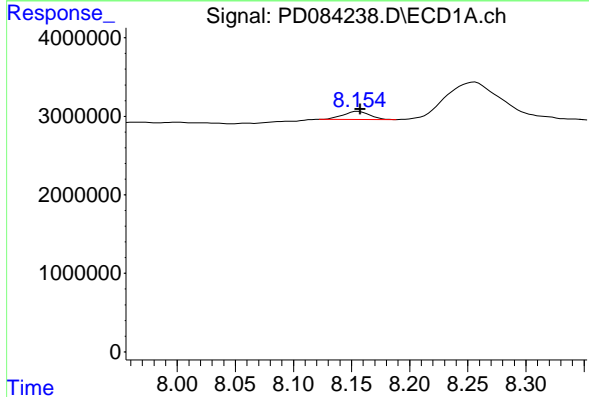
Manual Integrations
 APPROVED

Reviewed By :Abdul Mirza 08/06/2024
 Supervised By :Ankita Jodhani 08/06/2024



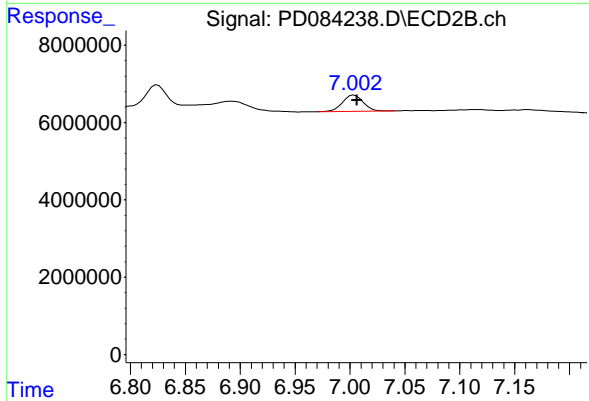
#21 Endrin ketone

R.T.: 6.825 min
 Delta R.T.: -0.002 min
 Response: 6837963
 Conc: 1.01 ng/ml



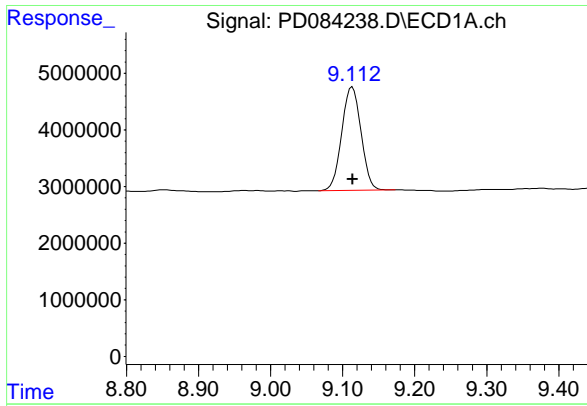
#22 Mirex

R.T.: 8.154 min
 Delta R.T.: -0.003 min
 Response: 1632006
 Conc: 1.00 ng/ml m



#22 Mirex

R.T.: 7.004 min
 Delta R.T.: -0.003 min
 Response: 5479803
 Conc: 1.01 ng/ml



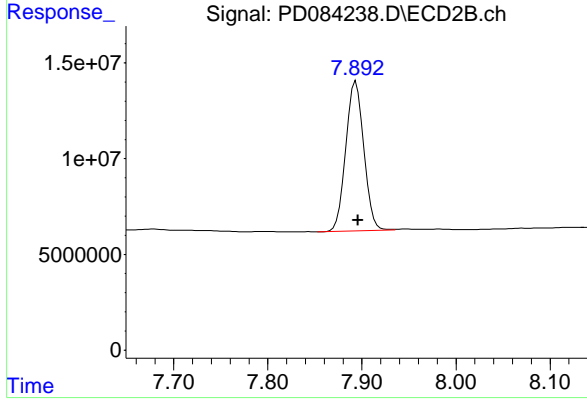
#28 Decachlorobiphenyl

R.T.: 9.113 min
 Delta R.T.: 0.000 min
 Response: 34029306
 Conc: 14.91 ng/ml

Instrument : ECD_D
 ClientSampleId : LOD-MDL-WATER-01-QT3-2024

Manual Integrations
 APPROVED

Reviewed By :Abdul Mirza 08/06/2024
 Supervised By :Ankita Jodhani 08/06/2024



#28 Decachlorobiphenyl

R.T.: 7.894 min
 Delta R.T.: -0.002 min
 Response: 103991475
 Conc: 16.19 ng/ml