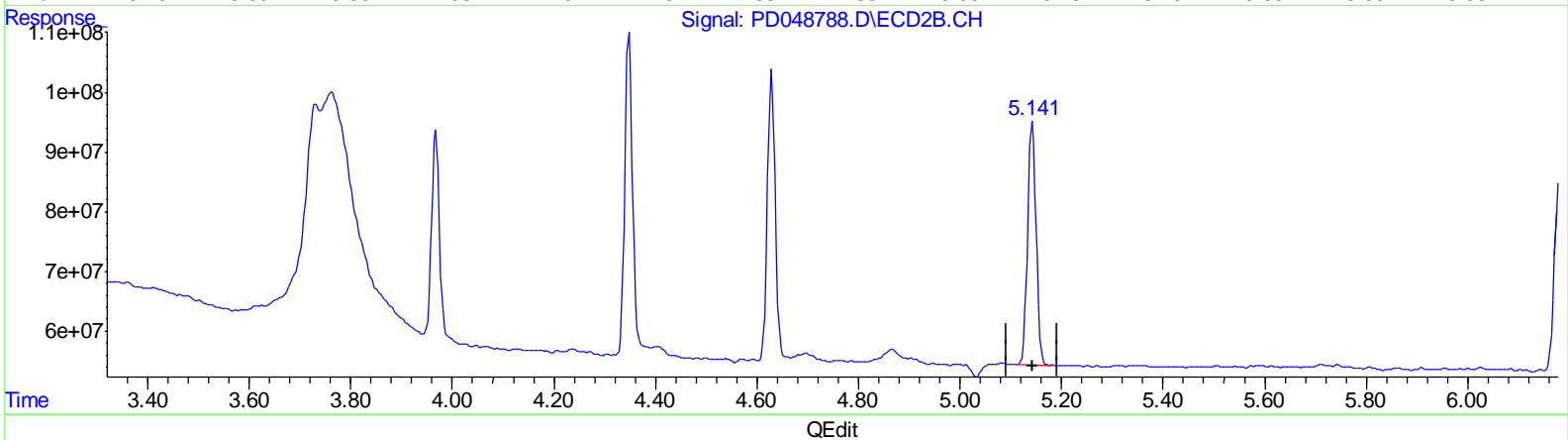
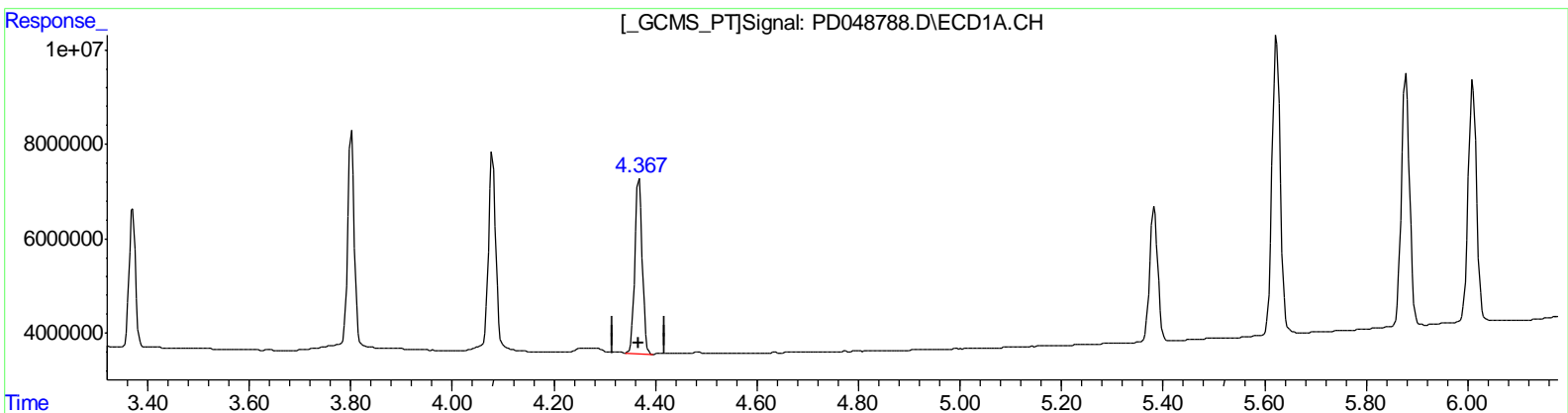


Data Path : Z:\pestpcbsrv\HPCHEM1\ECD_D\Data\PD080818\
Data File : PD048788.D
Signal(s) : Signal #1: ECD1A.CH Signal #2: ECD2B.CH
Acq On : 08 Aug 2018 17:33
Operator : AJ\SJ
Sample : INDA306
Misc :
ALS Vial : 22 Sample Multiplier: 1

Integration File signal 1: autoint1.e
Integration File signal 2: autoint2.e
Quant Time: Aug 09 00:49:29 2018
Quant Method : Z:\pestpcbsrv\HPCHEM1\ECD_D\Method\PD072818CLP.M
Quant Title : GC Extractables
QLast Update : Sat Jul 28 05:19:54 2018
Response via : Initial Calibration
Integrator: ChemStation 6890 Scale Mode: Large solvent peaks clipped

Volume Inj. : 1 µl
Signal #1 Phase : ZB-MR2 Signal #2 Phase: ZB-MR1
Signal #1 Info : 30M x 0.32mm x0.2 Signal #2 Info : 30M x 0.32mm x 0.50µm



(4) Heptachlor (MA)
4.367min 18.516 ng/ml m
response 37639672

(4) Heptachlor #2 (MA)
5.142min 19.021 ng/ml
response 475330074

(+) = Expected Retention Time