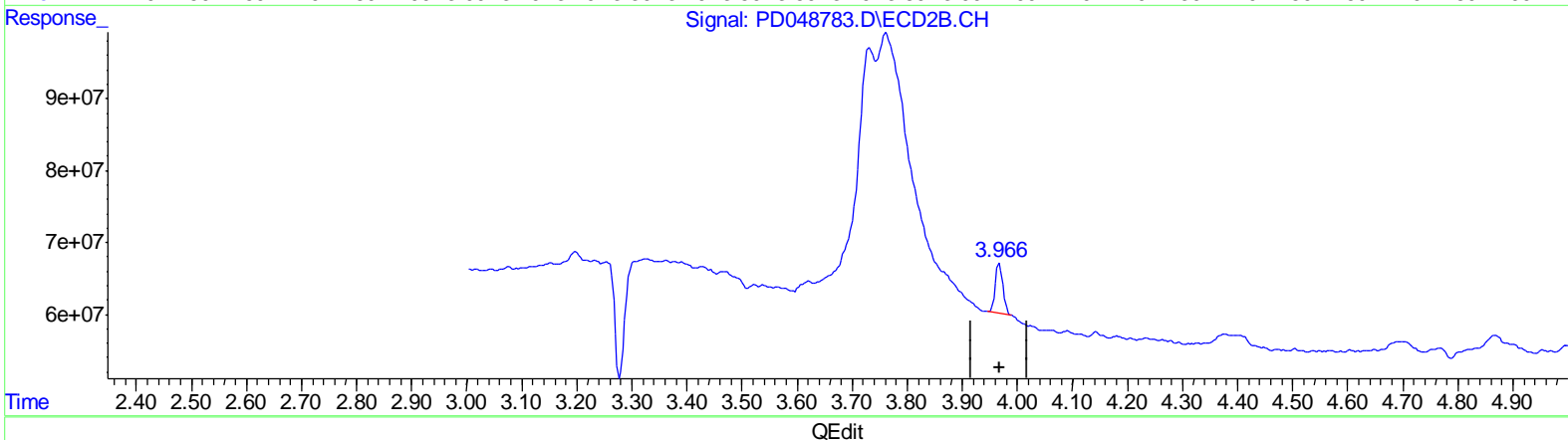
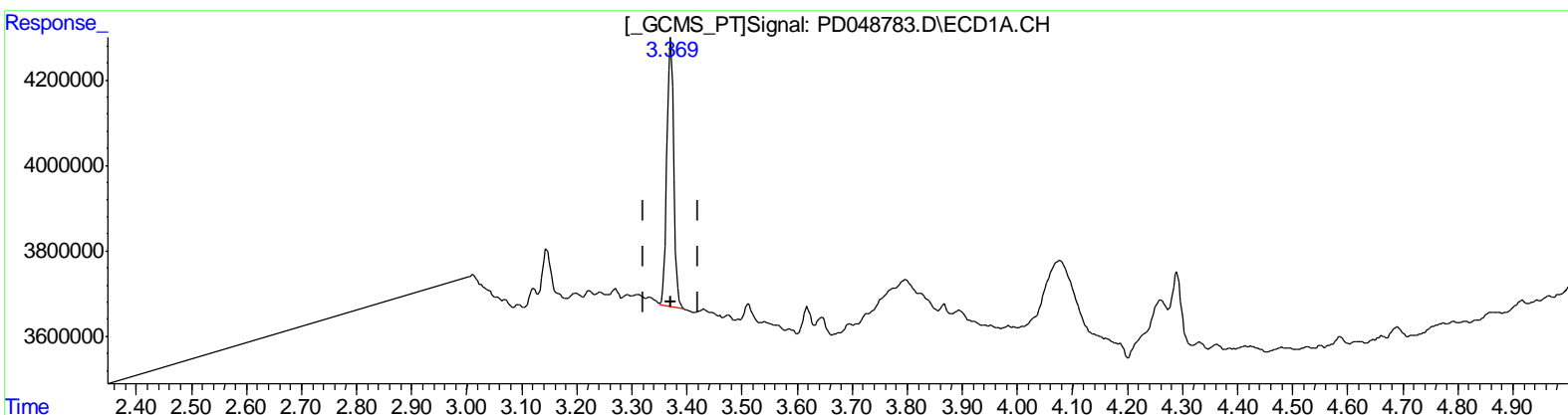


Data Path : Z:\pestpcbsrv\HPCHEM1\ECD\_D\Data\PD080818\  
 Data File : PD048783.D  
 Signal(s) : Signal #1: ECD1A.CH Signal #2: ECD2B.CH  
 Acq On : 08 Aug 2018 16:25  
 Operator : AJ\SJ  
 Sample : J4268-09  
 Misc :  
 ALS Vial : 18 Sample Multiplier: 1

Integration File signal 1: autoint1.e  
 Integration File signal 2: autoint2.e  
 Quant Time: Aug 09 00:47:56 2018  
 Quant Method : Z:\pestpcbsrv\HPCHEM1\ECD\_D\Method\PD072818CLP.M  
 Quant Title : GC Extractables  
 QLast Update : Sat Jul 28 05:19:54 2018  
 Response via : Initial Calibration  
 Integrator: ChemStation 6890 Scale Mode: Large solvent peaks clipped

Volume Inj. : 1 µl  
 Signal #1 Phase : ZB-MR2 Signal #2 Phase: ZB-MR1  
 Signal #1 Info : 30M x 0.32mm x0.2 Signal #2 Info : 30M x 0.32mm x 0.50µm



(1) Tetrachloro-m-xylene (SA)

3.369min 3.922 ng/ml m  
 response 5403907

(1) Tetrachloro-m-xylene #2 (SA)

3.966min 3.404 ng/ml m  
 response 65475822