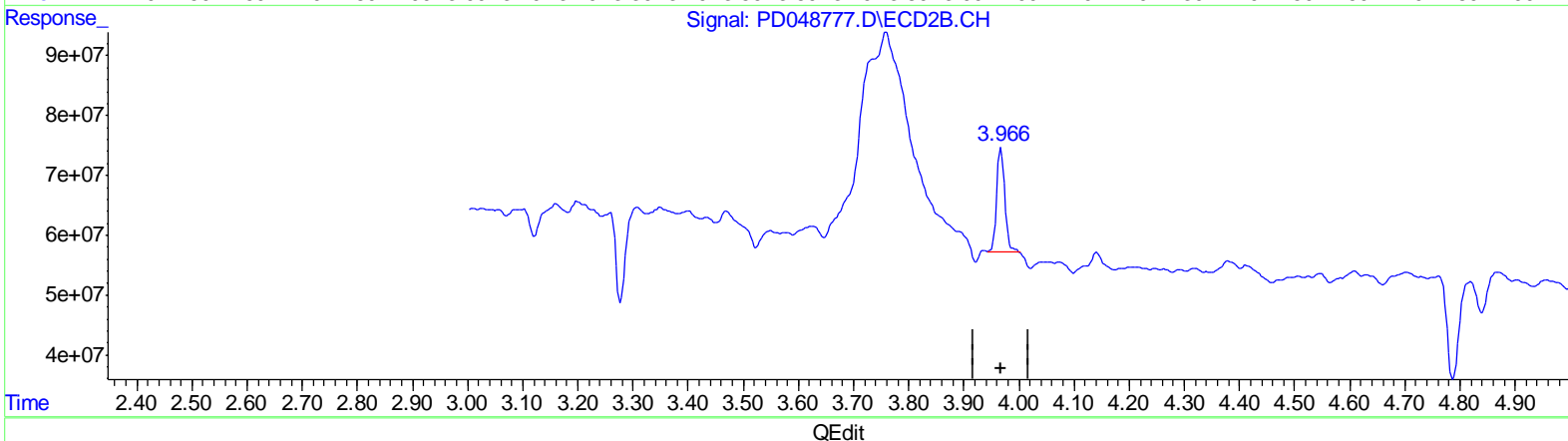
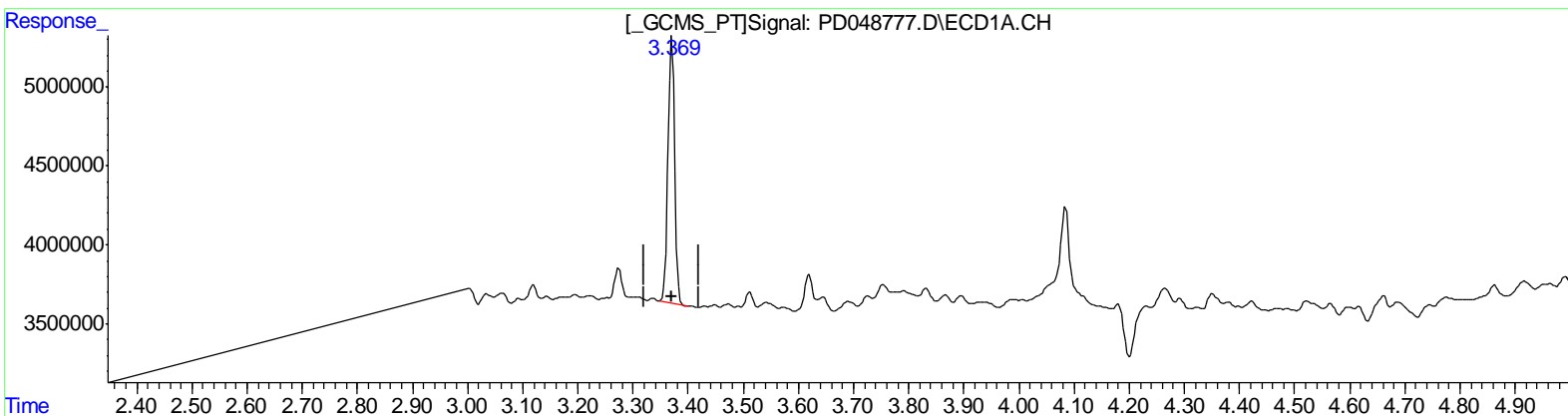


Data Path : Z:\pestpcbsrv\HPCHEM1\ECD_D\Data\PD080818\
Data File : PD048777.D
Signal(s) : Signal #1: ECD1A.CH Signal #2: ECD2B.CH
Acq On : 08 Aug 2018 15:03
Operator : AJ\SJ
Sample : J4268-13
Misc :
ALS Vial : 12 Sample Multiplier: 1

Integration File signal 1: autoint1.e
Integration File signal 2: autoint2.e
Quant Time: Aug 09 00:45:48 2018
Quant Method : Z:\pestpcbsrv\HPCHEM1\ECD_D\Method\PD072818CLP.M
Quant Title : GC Extractables
QLast Update : Sat Jul 28 05:19:54 2018
Response via : Initial Calibration
Integrator: ChemStation 6890 Scale Mode: Large solvent peaks clipped

Volume Inj. : 1 µl
Signal #1 Phase : ZB-MR2 Signal #2 Phase: ZB-MR1
Signal #1 Info : 30M x 0.32mm x 0.2 Signal #2 Info : 30M x 0.32mm x 0.50µm



(1) Tetrachloro-m-xylene (SA)

3.370min 10.287 ng/ml

response 14173002

(1) Tetrachloro-m-xylene #2 (SA)

3.968min 9.328 ng/ml

response 179428867

(+) = Expected Retention Time

PD072818CLP.M Thu Aug 09 01:41:25 2018

Page: 1