

Data Path : Z:\pestpcbsrv\HPCHEM1\ECD_D\Data\PD080822\
 Data File : PD071398.D
 Signal(s) : Signal #1: ECD1A.ch Signal #2: ECD2B.ch
 Acq On : 08 Aug 2022 13:10
 Operator : AR\AJ
 Sample : PB146792BS
 Misc :
 ALS Vial : 16 Sample Multiplier: 1

Instrument :
 ECD_D
 ClientSampleId :

Integration File signal 1: autoint1.e
 Integration File signal 2: autoint2.e
 Quant Time: Aug 09 00:03:58 2022
 Quant Method : Z:\pestpcbsrv\HPCHEM1\ECD_D\Method\PD072622.M
 Quant Title : GC Extractables
 QLast Update : Tue Jul 26 03:39:07 2022
 Response via : Initial Calibration
 Integrator: ChemStation

Volume Inj. : 2 µl
 Signal #1 Phase : ZB-MR2 Signal #2 Phase: ZB-MR1
 Signal #1 Info : 30M x 0.32mm x0.2 Signal #2 Info : 30M x 0.32mm x 0.50µm

	Compound	RT#1	RT#2	Resp#1	Resp#2	ng/ml	ng/ml

System Monitoring Compounds							
1)	SA Tetrachlo...	2.814	3.573	43308422	516.5E6	15.271	18.350
28)	SA Decachlor...	8.015	9.103	42215492	191.6E6	15.221	18.504
Target Compounds							
2)	A alpha-BHC	3.324	4.039	190.5E6	1774.1E6	45.435	47.789
3)	MA gamma-BHC...	3.658	4.376	180.7E6	1403.0E6	45.175	46.855
4)	MA Heptachlor	4.006	4.954	191.8E6	1038.0E6	45.220	49.091
5)	MB Aldrin	4.290	5.296	182.5E6	858.3E6	44.738	48.601
6)	B beta-BHC	3.956	4.581	73232601	563.8E6	42.868	47.596
7)	B delta-BHC	4.191	4.830	174.4E6	1082.8E6	44.437	54.407
8)	Heptachlo...	4.797	5.727	166.6E6	728.1E6	45.479	55.710
9)	A Endosulfan I	5.172	6.116	157.4E6	670.0E6	45.950	48.730
10)	B gamma-Chl...	5.050	5.983	171.8E6	714.5E6	45.222	48.651
11)	B alpha-Chl...	5.115	6.060	168.7E6	700.8E6	45.392	48.327
12)	B 4,4'-DDE	5.306	6.232	156.6E6	701.9E6	45.745	49.104
13)	MA Dieldrin	5.439	6.393	164.7E6	710.8E6	45.481	48.368
14)	MA Endrin	5.716	6.626	144.6E6	615.5E6	45.663	49.206
15)	B Endosulfa...	6.011	6.850	127.2E6	574.7E6	42.330	46.353
16)	A 4,4'-DDD	5.865	6.756	129.0E6	596.8E6	45.259	50.177
17)	MA 4,4'-DDT	6.119	7.067	127.5E6	602.6E6	43.199	46.200
18)	B Endrin al...	6.192	6.982	100.5E6	446.4E6	45.585	46.083
19)	B Endosulfa...	6.417	7.214	128.0E6	549.8E6	44.496	46.098
20)	A Methoxychlor	6.699	7.543	69605933	314.8E6	42.198	45.664
21)	B Endrin ke...	6.928	7.707	144.6E6	608.5E6	44.392	45.330
22)	Mirex	7.116	8.169	105.3E6	402.0E6	42.999	46.733
24)	Chlordane-2	0.000	5.296f	0	858.3E6	N.D.	1432.881 #
25)	Chlordane-3	5.050	5.983	171.8E6	714.5E6	503.231	385.377
26)	Chlordane-4	5.115	6.060	168.7E6	700.8E6	531.634	321.510 #
27)	Chlordane-5	6.011	0.000	127.2E6	0	1052.132	N.D. #

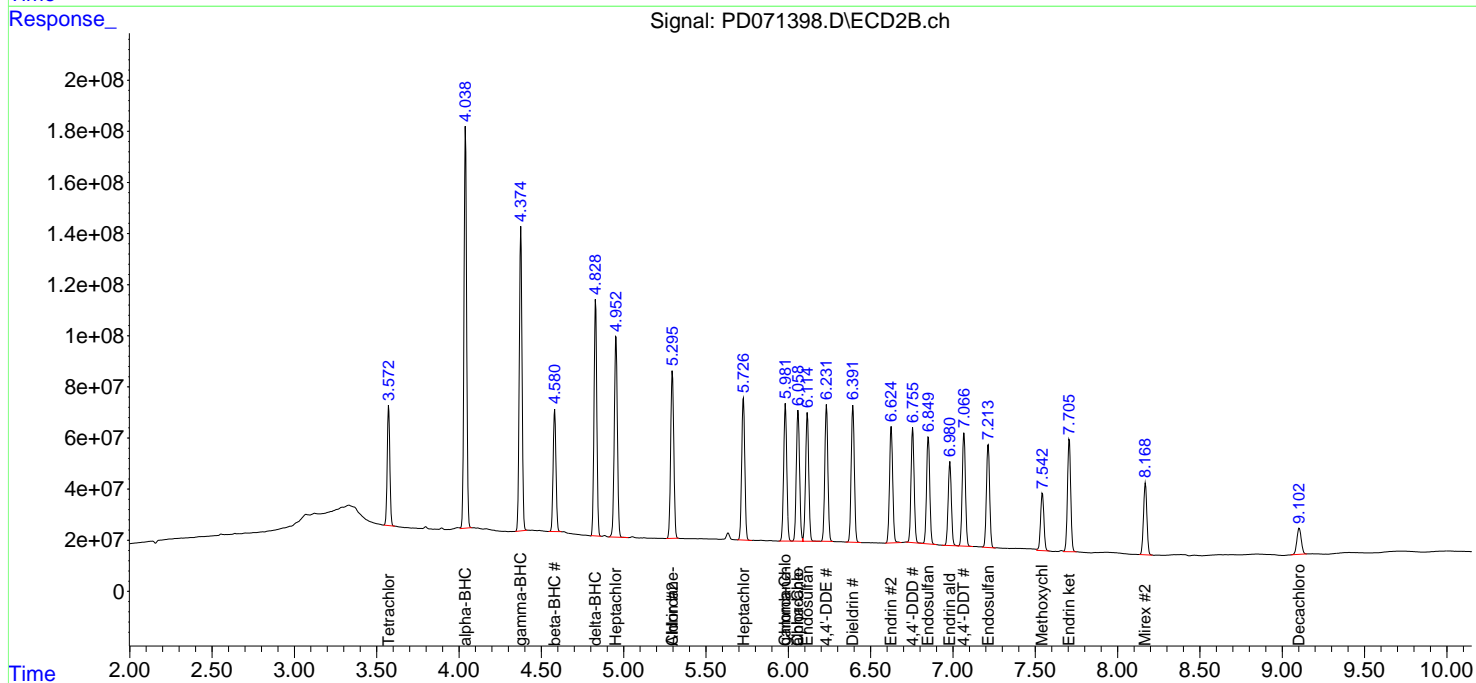
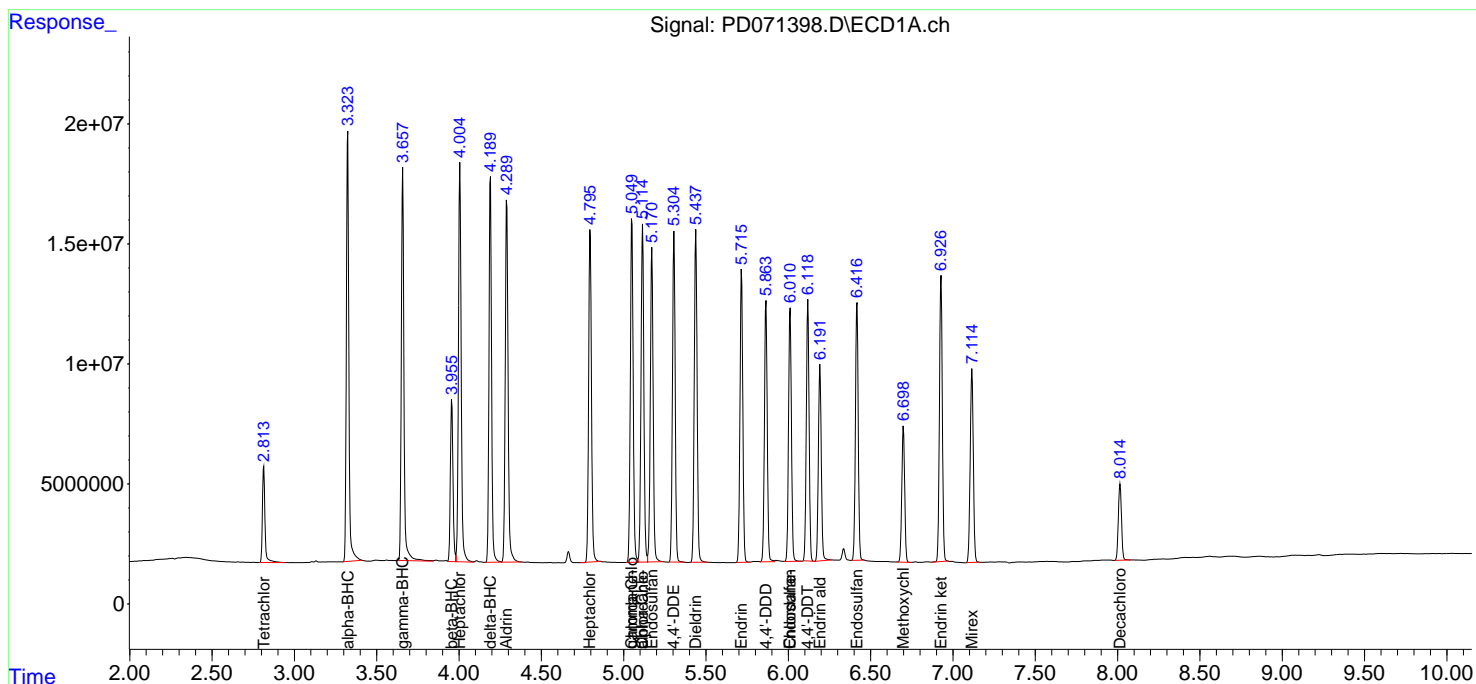
(f)=RT Delta > 1/2 Window (#)=Amounts differ by > 25% (m)=manual int.

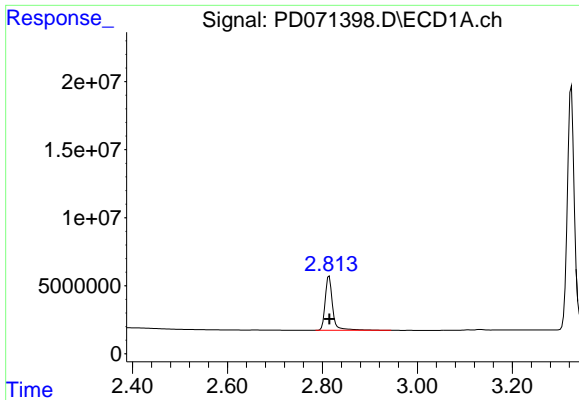
Data Path : Z:\pestpcbsrv\HPCHEM1\ECD_D\Data\PD080822\
 Data File : PD071398.D
 Signal(s) : Signal #1: ECD1A.ch Signal #2: ECD2B.ch
 Acq On : 08 Aug 2022 13:10
 Operator : AR\AJ
 Sample : PB146792BS
 Misc :
 ALS Vial : 16 Sample Multiplier: 1

Instrument :
 ECD_D
 ClientSampleId :

Integration File signal 1: autoint1.e
 Integration File signal 2: autoint2.e
 Quant Time: Aug 09 00:03:58 2022
 Quant Method : Z:\pestpcbsrv\HPCHEM1\ECD_D\Method\PD072622.M
 Quant Title : GC Extractables
 QLast Update : Tue Jul 26 03:39:07 2022
 Response via : Initial Calibration
 Integrator: ChemStation

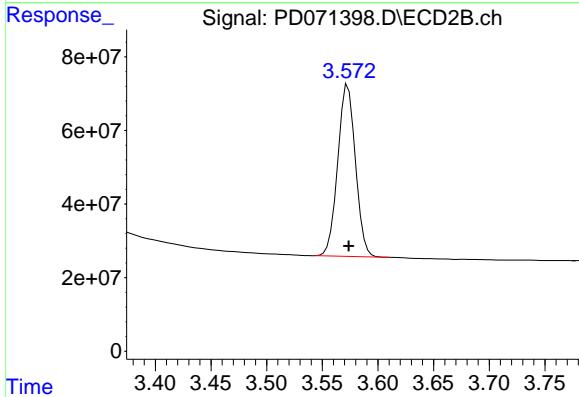
Volume Inj. : 2 µl
 Signal #1 Phase : ZB-MR2 Signal #2 Phase: ZB-MR1
 Signal #1 Info : 30M x 0.32mm x0.2 Signal #2 Info : 30M x 0.32mm x 0.50µm



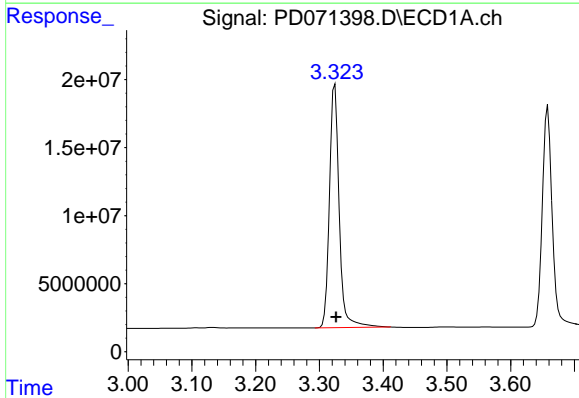


#1 Tetrachloro-m-xylene
 R.T.: 2.814 min
 Delta R.T.: 0.000 min
 Response: 43308422
 Conc: 15.27 ng/ml

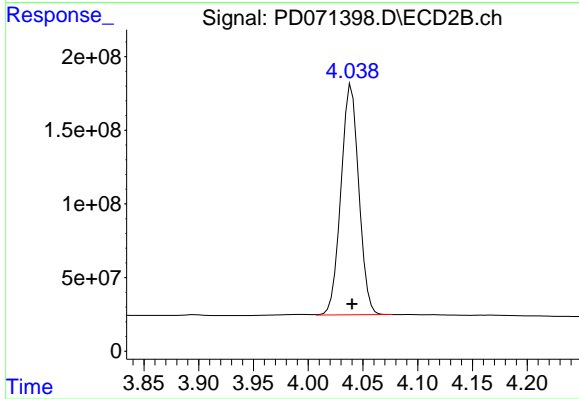
Instrument :
 ECD_D
 ClientSampleId :



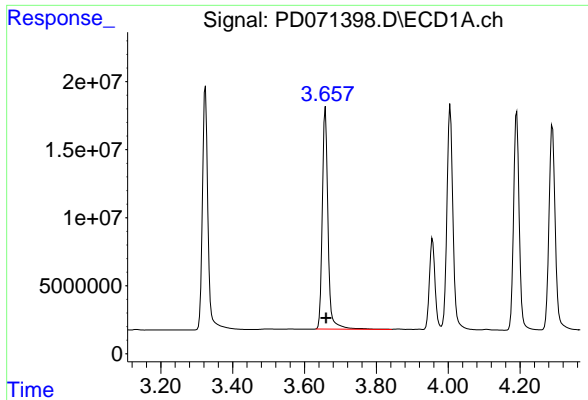
#1 Tetrachloro-m-xylene
 R.T.: 3.573 min
 Delta R.T.: 0.000 min
 Response: 516548951
 Conc: 18.35 ng/ml



#2 alpha-BHC
 R.T.: 3.324 min
 Delta R.T.: -0.002 min
 Response: 190528629
 Conc: 45.43 ng/ml

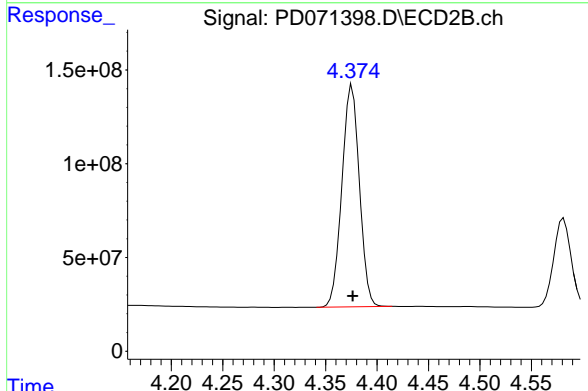


#2 alpha-BHC
 R.T.: 4.039 min
 Delta R.T.: 0.000 min
 Response: 1774098487
 Conc: 47.79 ng/ml

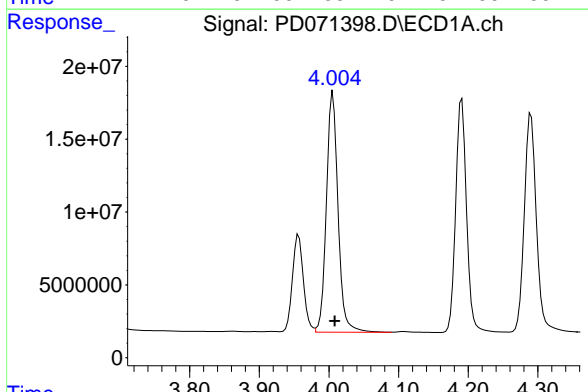


#3 gamma-BHC (Lindane)
 R.T.: 3.658 min
 Delta R.T.: -0.002 min
 Response: 180708463
 Conc: 45.18 ng/ml

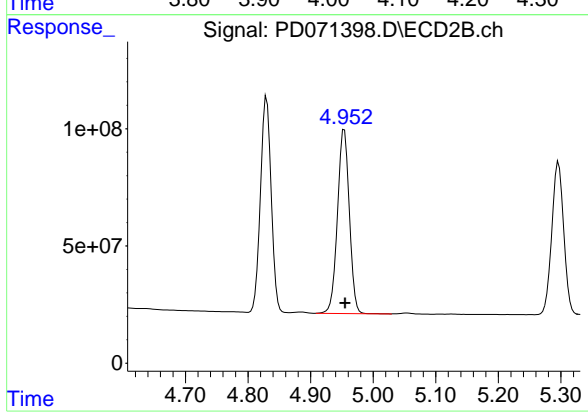
Instrument :
 ECD_D
 ClientSampleId :



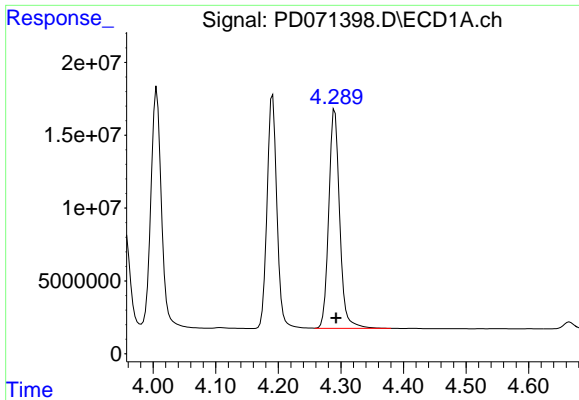
#3 gamma-BHC (Lindane)
 R.T.: 4.376 min
 Delta R.T.: 0.000 min
 Response: 1402967696
 Conc: 46.86 ng/ml



#4 Heptachlor
 R.T.: 4.006 min
 Delta R.T.: -0.003 min
 Response: 191803777
 Conc: 45.22 ng/ml

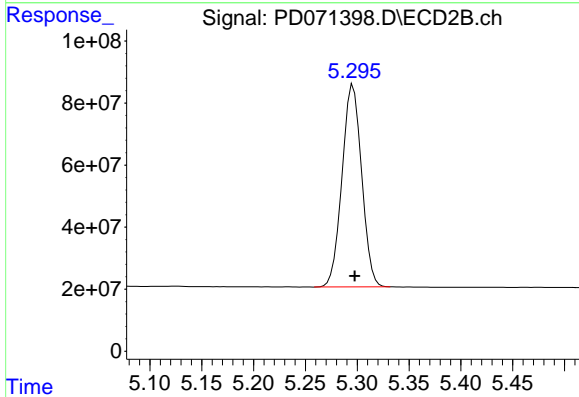


#4 Heptachlor
 R.T.: 4.954 min
 Delta R.T.: -0.001 min
 Response: 1037955001
 Conc: 49.09 ng/ml

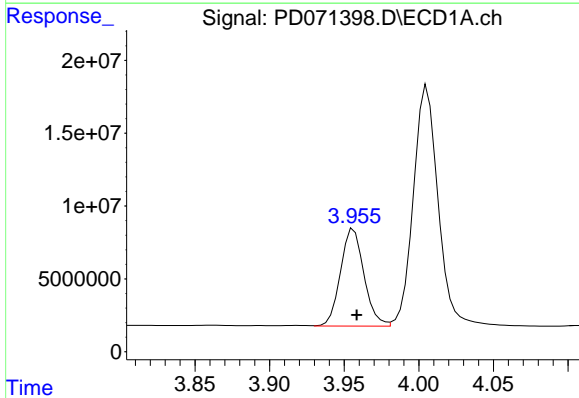


#5 Aldrin
 R.T.: 4.290 min
 Delta R.T.: -0.002 min
 Response: 182451515
 Conc: 44.74 ng/ml

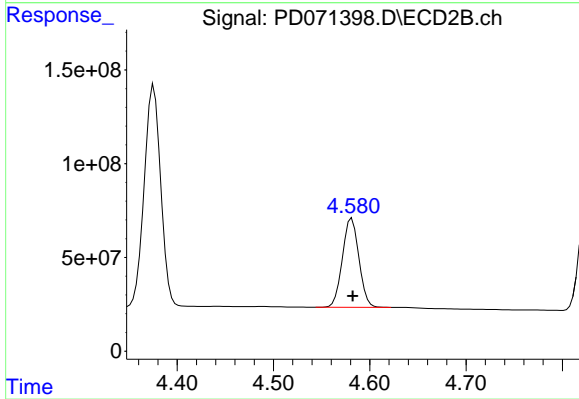
Instrument :
 ECD_D
 ClientSampleId :



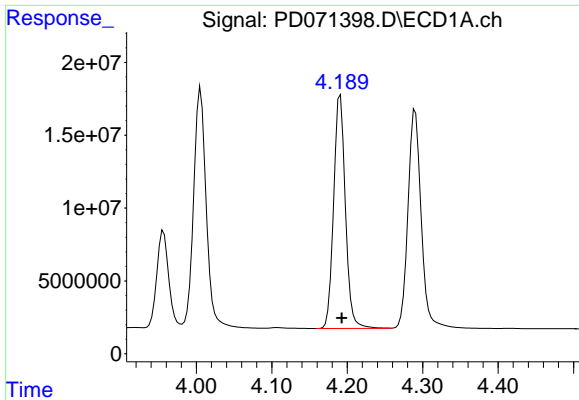
#5 Aldrin
 R.T.: 5.296 min
 Delta R.T.: -0.002 min
 Response: 858305536
 Conc: 48.60 ng/ml



#6 beta-BHC
 R.T.: 3.956 min
 Delta R.T.: -0.002 min
 Response: 73232601
 Conc: 42.87 ng/ml



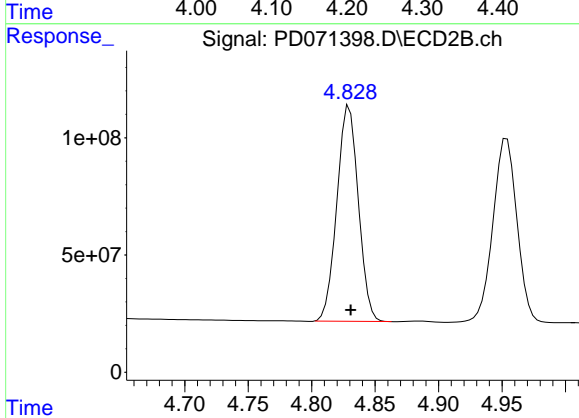
#6 beta-BHC
 R.T.: 4.581 min
 Delta R.T.: 0.000 min
 Response: 563752666
 Conc: 47.60 ng/ml



#7 delta-BHC

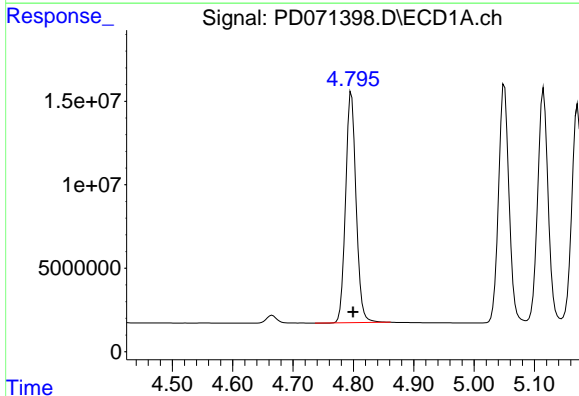
R.T.: 4.191 min
 Delta R.T.: -0.002 min
 Response: 174411507
 Conc: 44.44 ng/ml

Instrument :
 ECD_D
 ClientSampleId :



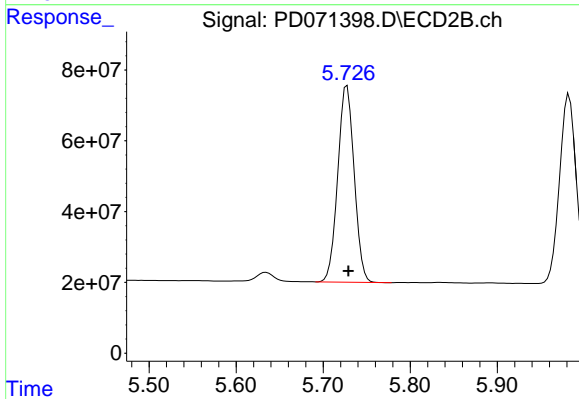
#7 delta-BHC

R.T.: 4.830 min
 Delta R.T.: -0.001 min
 Response: 1082752447
 Conc: 54.41 ng/ml



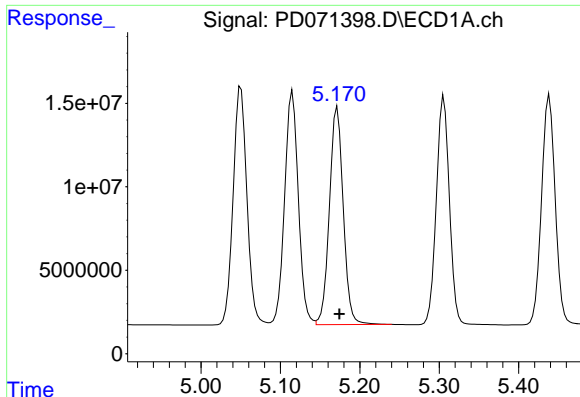
#8 Heptachlor epoxide

R.T.: 4.797 min
 Delta R.T.: -0.003 min
 Response: 166550829
 Conc: 45.48 ng/ml



#8 Heptachlor epoxide

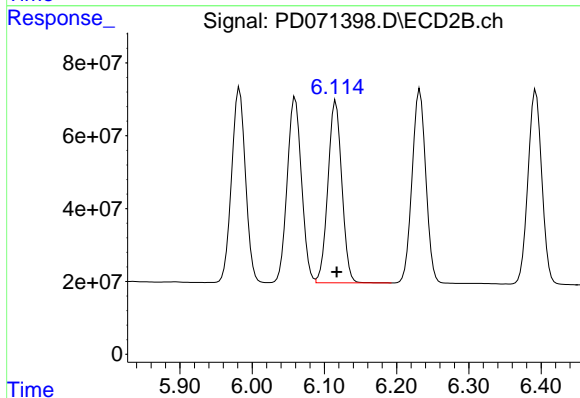
R.T.: 5.727 min
 Delta R.T.: -0.002 min
 Response: 728058459
 Conc: 55.71 ng/ml



#9 Endosulfan I

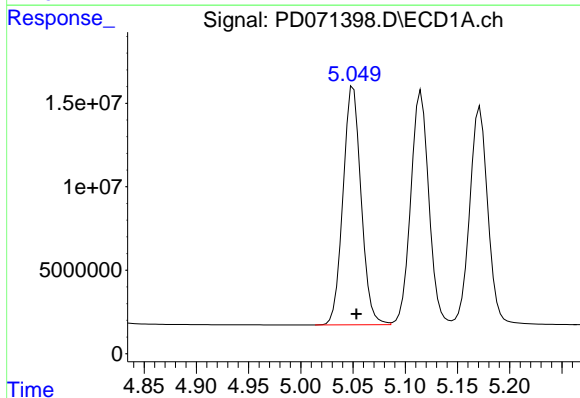
R.T.: 5.172 min
 Delta R.T.: -0.003 min
 Response: 157391400
 Conc: 45.95 ng/ml

Instrument :
 ECD_D
 ClientSampleId :



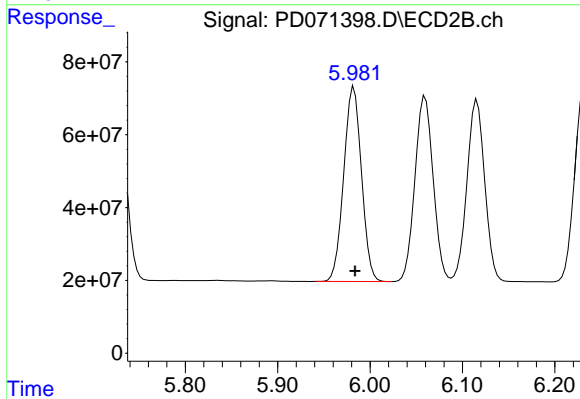
#9 Endosulfan I

R.T.: 6.116 min
 Delta R.T.: -0.001 min
 Response: 669993563
 Conc: 48.73 ng/ml



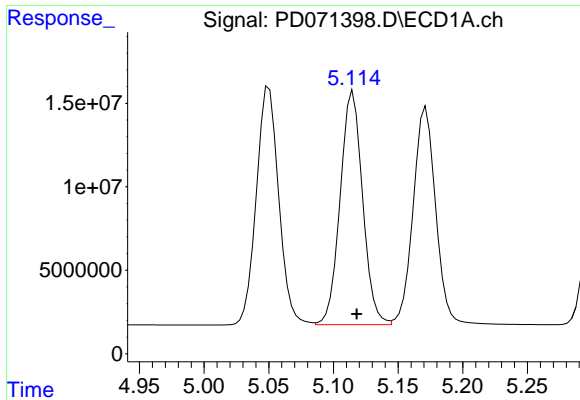
#10 gamma-Chlordane

R.T.: 5.050 min
 Delta R.T.: -0.003 min
 Response: 171831923
 Conc: 45.22 ng/ml



#10 gamma-Chlordane

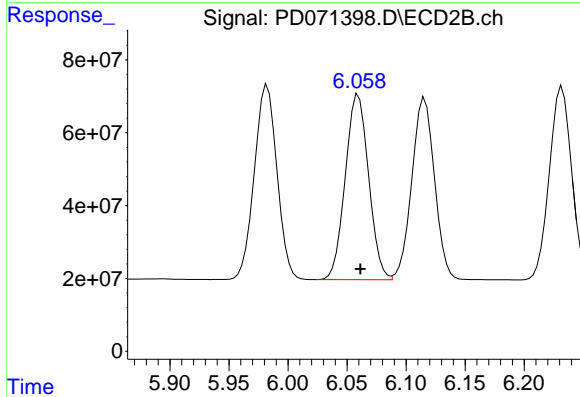
R.T.: 5.983 min
 Delta R.T.: -0.001 min
 Response: 714459006
 Conc: 48.65 ng/ml



#11 alpha-Chlordane

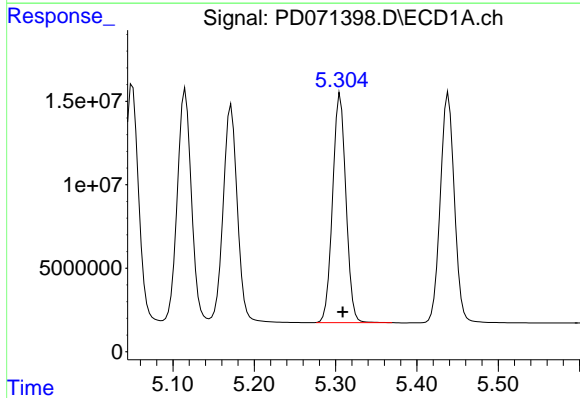
R.T.: 5.115 min
 Delta R.T.: -0.003 min
 Response: 168663363
 Conc: 45.39 ng/ml

Instrument :
 ECD_D
 ClientSampleId :



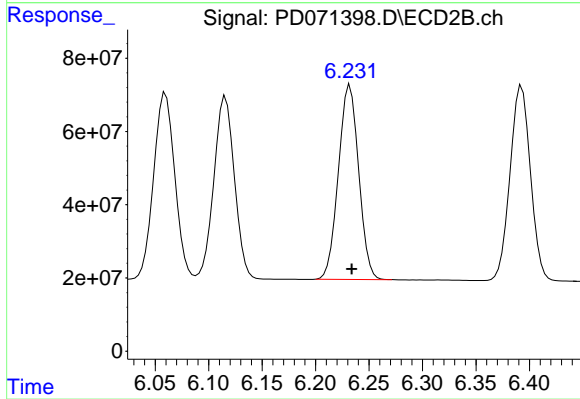
#11 alpha-Chlordane

R.T.: 6.060 min
 Delta R.T.: -0.002 min
 Response: 700770560
 Conc: 48.33 ng/ml



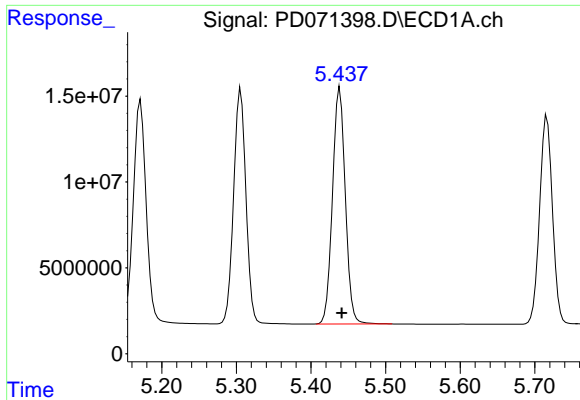
#12 4,4'-DDE

R.T.: 5.306 min
 Delta R.T.: -0.003 min
 Response: 156568314
 Conc: 45.75 ng/ml



#12 4,4'-DDE

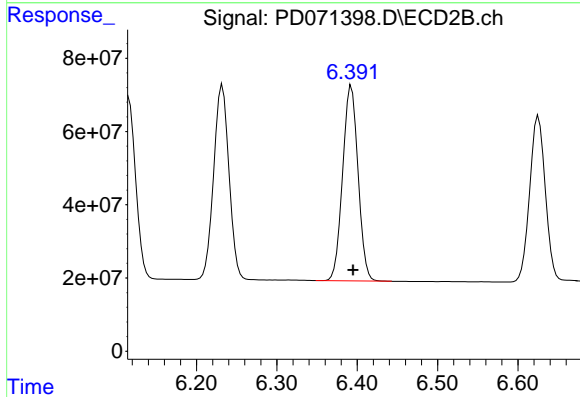
R.T.: 6.232 min
 Delta R.T.: -0.002 min
 Response: 701935584
 Conc: 49.10 ng/ml



#13 Dieldrin

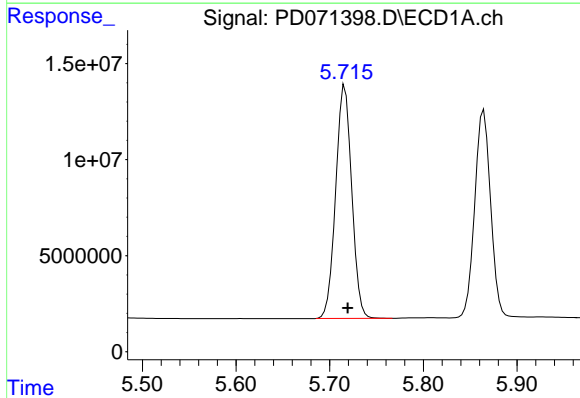
R.T.: 5.439 min
 Delta R.T.: -0.002 min
 Response: 164727859
 Conc: 45.48 ng/ml

Instrument :
 ECD_D
 ClientSampleId :



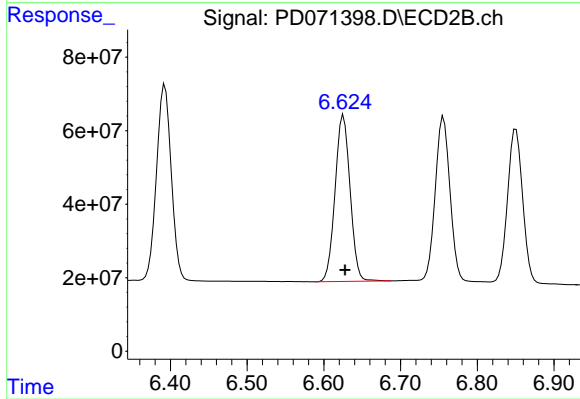
#13 Dieldrin

R.T.: 6.393 min
 Delta R.T.: -0.002 min
 Response: 710751993
 Conc: 48.37 ng/ml



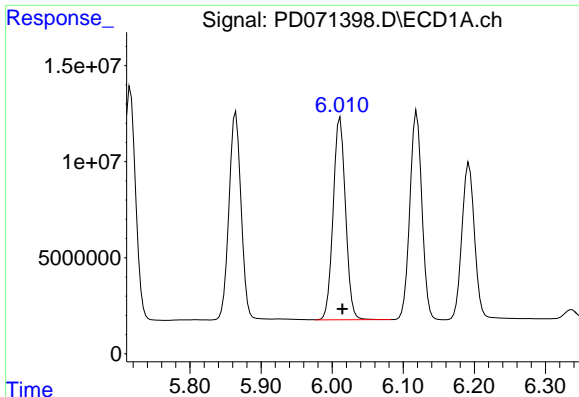
#14 Endrin

R.T.: 5.716 min
 Delta R.T.: -0.003 min
 Response: 144575095
 Conc: 45.66 ng/ml



#14 Endrin

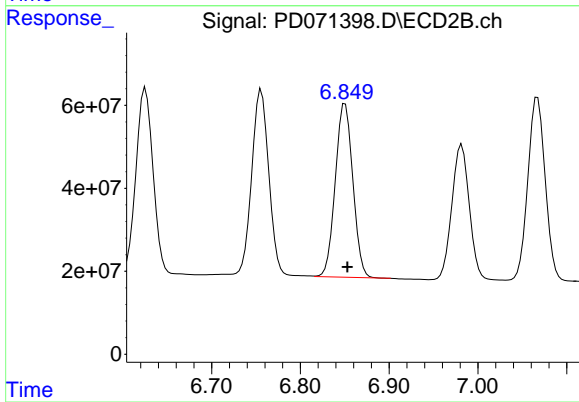
R.T.: 6.626 min
 Delta R.T.: -0.002 min
 Response: 615501401
 Conc: 49.21 ng/ml



#15 Endosulfan II

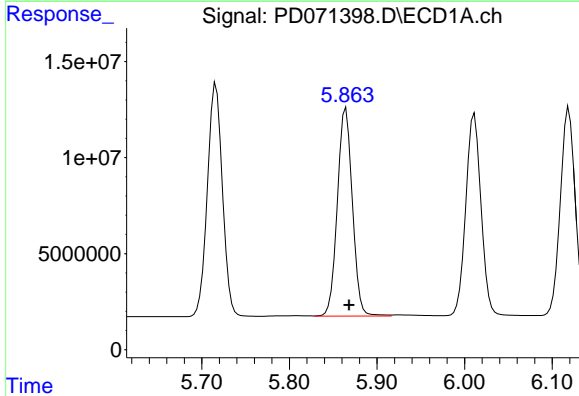
R.T.: 6.011 min
 Delta R.T.: -0.003 min
 Response: 127211052
 Conc: 42.33 ng/ml

Instrument :
 ECD_D
 ClientSampleId :



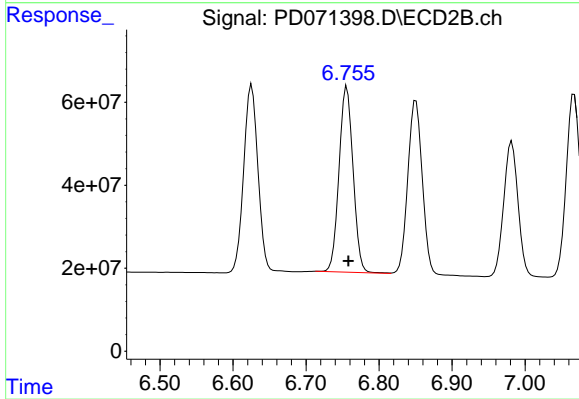
#15 Endosulfan II

R.T.: 6.850 min
 Delta R.T.: -0.003 min
 Response: 574741749
 Conc: 46.35 ng/ml



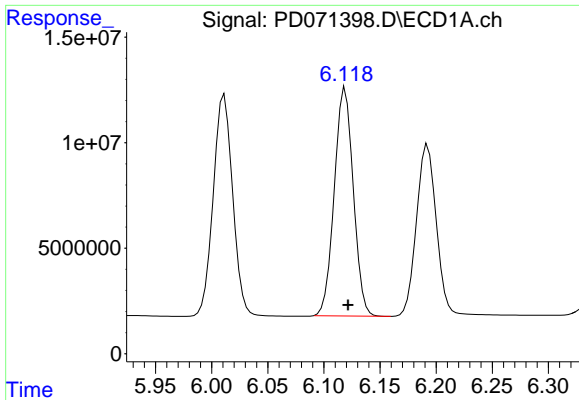
#16 4,4'-DDD

R.T.: 5.865 min
 Delta R.T.: -0.003 min
 Response: 129019564
 Conc: 45.26 ng/ml



#16 4,4'-DDD

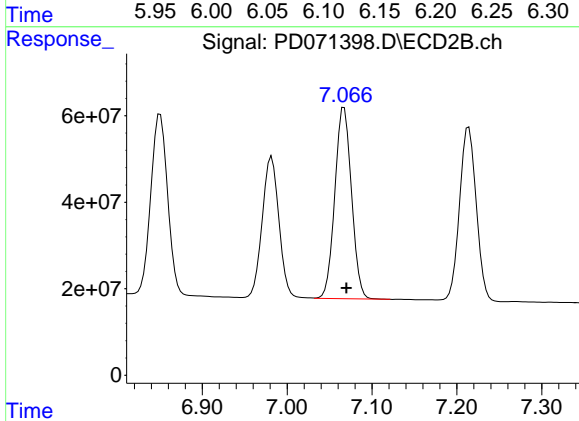
R.T.: 6.756 min
 Delta R.T.: -0.002 min
 Response: 596801254
 Conc: 50.18 ng/ml



#17 4,4'-DDT

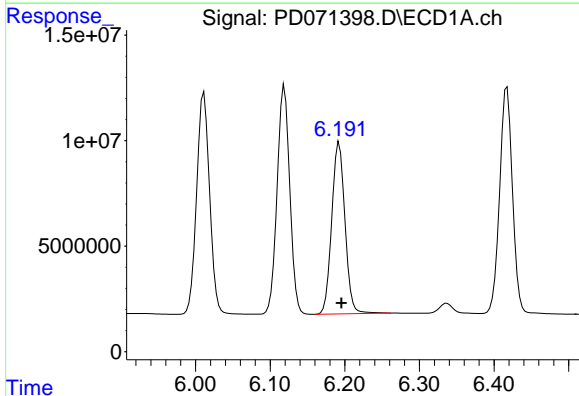
R.T.: 6.119 min
 Delta R.T.: -0.002 min
 Response: 127512356
 Conc: 43.20 ng/ml

Instrument :
 ECD_D
 ClientSampleId :



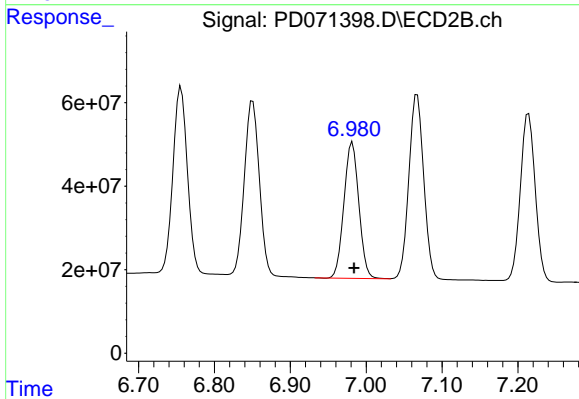
#17 4,4'-DDT

R.T.: 7.067 min
 Delta R.T.: -0.003 min
 Response: 602589519
 Conc: 46.20 ng/ml



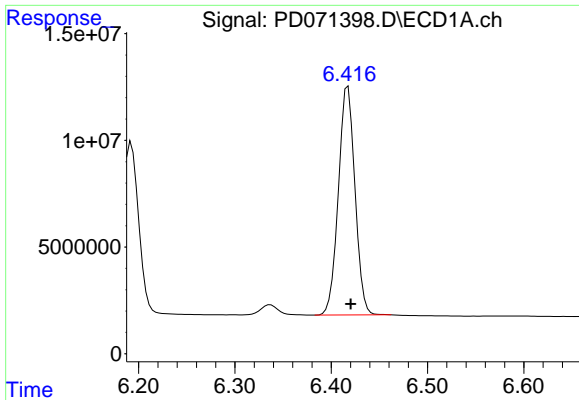
#18 Endrin aldehyde

R.T.: 6.192 min
 Delta R.T.: -0.003 min
 Response: 100500857
 Conc: 45.59 ng/ml



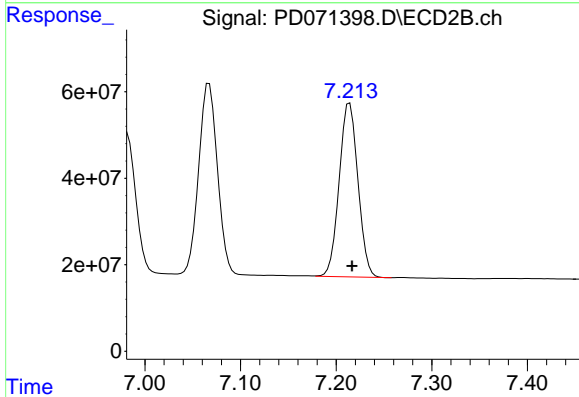
#18 Endrin aldehyde

R.T.: 6.982 min
 Delta R.T.: -0.002 min
 Response: 446449096
 Conc: 46.08 ng/ml

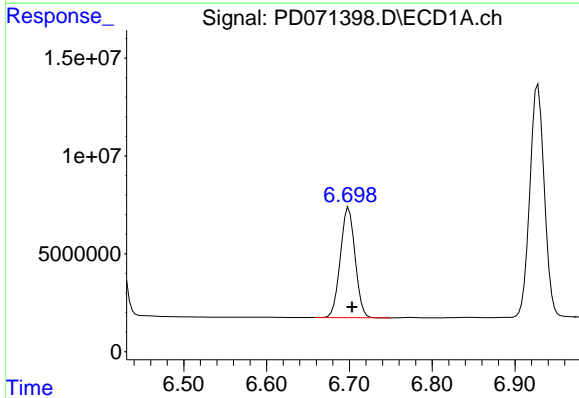


#19 Endosulfan Sulfate
 R.T.: 6.417 min
 Delta R.T.: -0.003 min
 Response: 127959906
 Conc: 44.50 ng/ml

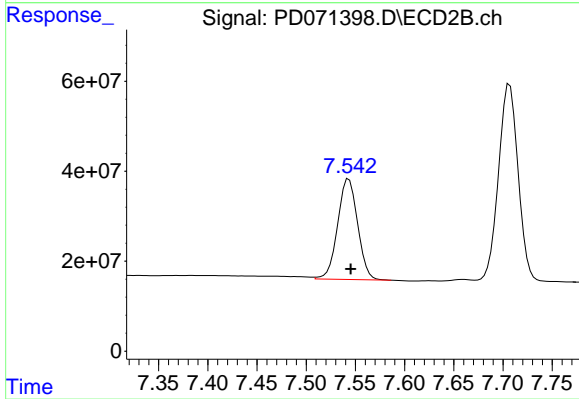
Instrument :
 ECD_D
 ClientSampleId :



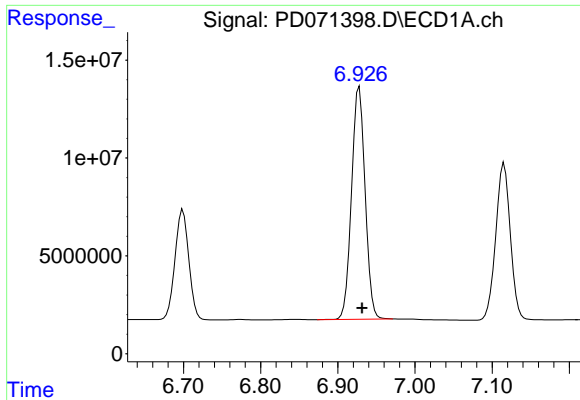
#19 Endosulfan Sulfate
 R.T.: 7.214 min
 Delta R.T.: -0.002 min
 Response: 549798728
 Conc: 46.10 ng/ml



#20 Methoxychlor
 R.T.: 6.699 min
 Delta R.T.: -0.004 min
 Response: 69605933
 Conc: 42.20 ng/ml



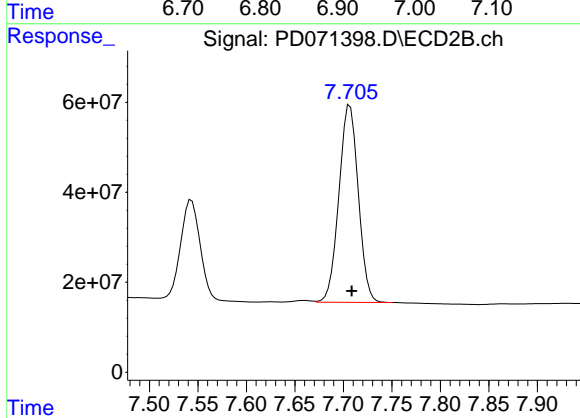
#20 Methoxychlor
 R.T.: 7.543 min
 Delta R.T.: -0.002 min
 Response: 314751304
 Conc: 45.66 ng/ml



#21 Endrin ketone

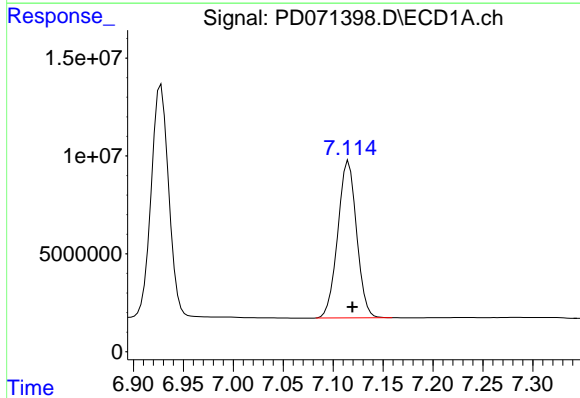
R.T.: 6.928 min
 Delta R.T.: -0.004 min
 Response: 144610068
 Conc: 44.39 ng/ml

Instrument :
 ECD_D
 ClientSampleId :



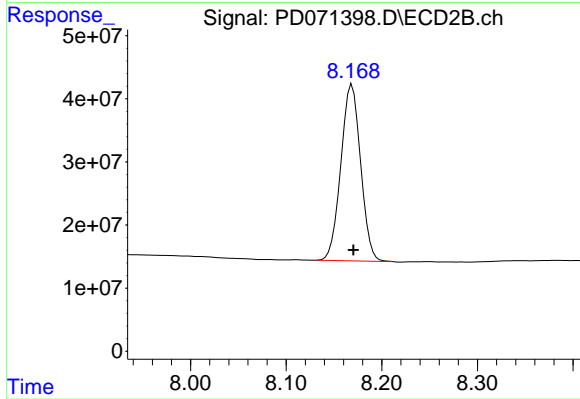
#21 Endrin ketone

R.T.: 7.707 min
 Delta R.T.: -0.002 min
 Response: 608527351
 Conc: 45.33 ng/ml



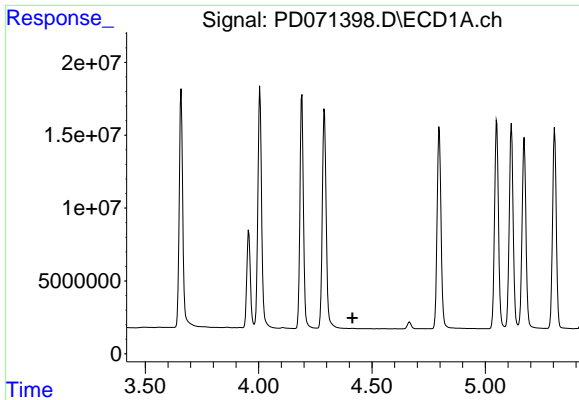
#22 Mirex

R.T.: 7.116 min
 Delta R.T.: -0.004 min
 Response: 105272140
 Conc: 43.00 ng/ml



#22 Mirex

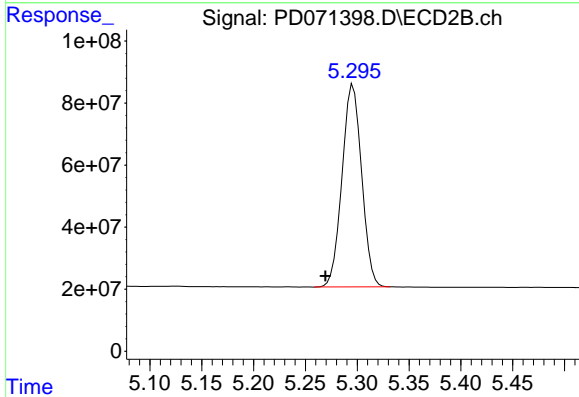
R.T.: 8.169 min
 Delta R.T.: -0.002 min
 Response: 402005473
 Conc: 46.73 ng/ml



#24 Chlordane-2

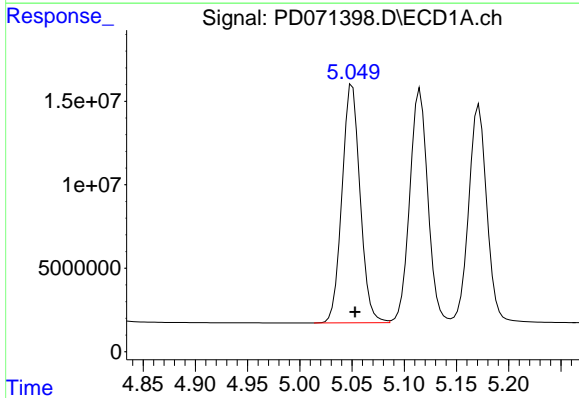
R.T.: 0.000 min
 Exp R.T.: 4.415 min
 Response: 0
 Conc: N.D.

Instrument :
 ECD_D
 ClientSampleId :



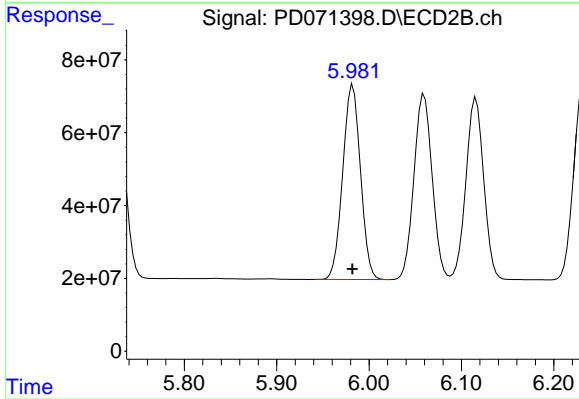
#24 Chlordane-2

R.T.: 5.296 min
 Delta R.T.: 0.027 min
 Response: 858305536
 Conc: 1432.88 ng/ml



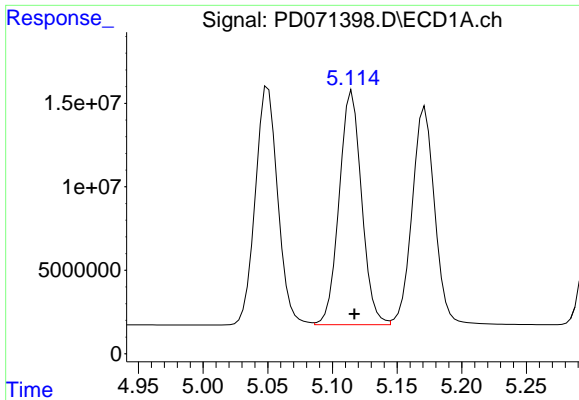
#25 Chlordane-3

R.T.: 5.050 min
 Delta R.T.: -0.003 min
 Response: 171831923
 Conc: 503.23 ng/ml



#25 Chlordane-3

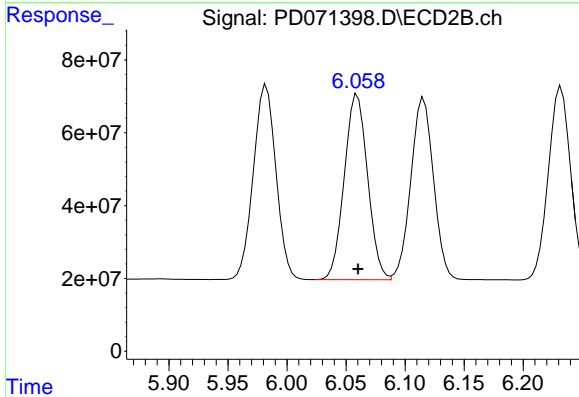
R.T.: 5.983 min
 Delta R.T.: 0.000 min
 Response: 714459006
 Conc: 385.38 ng/ml



#26 Chlordane-4

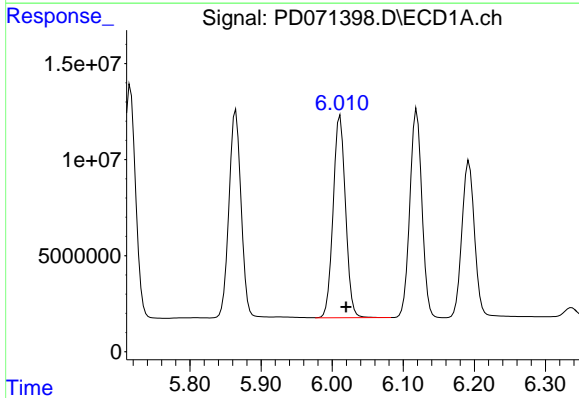
R.T.: 5.115 min
 Delta R.T.: -0.002 min
 Response: 168663363
 Conc: 531.63 ng/ml

Instrument :
 ECD_D
 ClientSampleId :



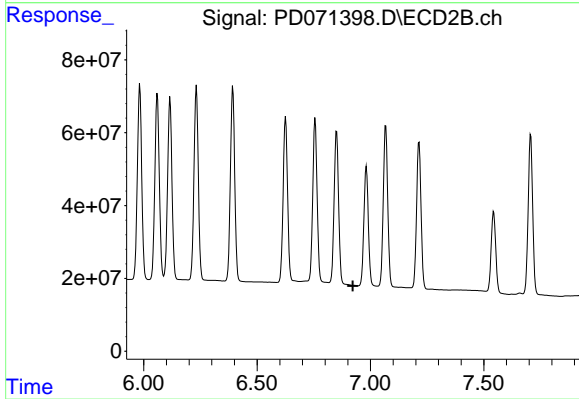
#26 Chlordane-4

R.T.: 6.060 min
 Delta R.T.: 0.000 min
 Response: 700770560
 Conc: 321.51 ng/ml



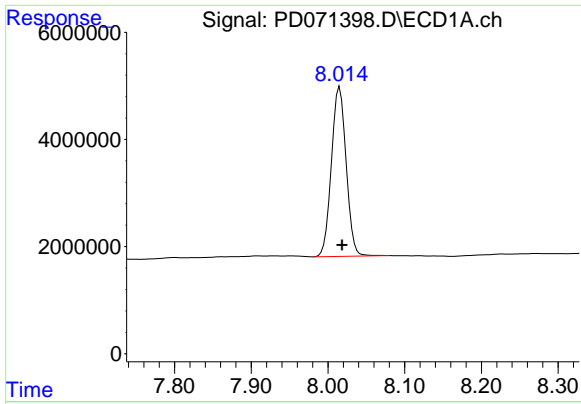
#27 Chlordane-5

R.T.: 6.011 min
 Delta R.T.: -0.008 min
 Response: 127211052
 Conc: 1052.13 ng/ml



#27 Chlordane-5

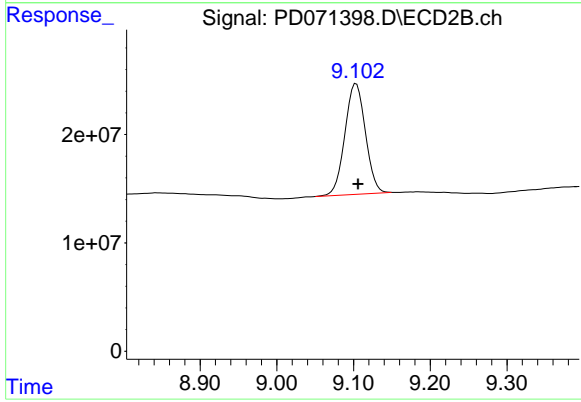
R.T.: 0.000 min
 Exp R.T. : 6.923 min
 Response: 0
 Conc: N.D.



#28 Decachlorobiphenyl

R.T.: 8.015 min
Delta R.T.: -0.003 min
Response: 42215492
Conc: 15.22 ng/ml

Instrument :
ECD_D
ClientSampleId :



#28 Decachlorobiphenyl

R.T.: 9.103 min
Delta R.T.: -0.002 min
Response: 191566917
Conc: 18.50 ng/ml