

Data Path : Z:\pestpcbsrv\HPCHEM1\ECD_D\Data\PD080922\
 Data File : PD071451.D
 Signal(s) : Signal #1: ECD1A.ch Signal #2: ECD2B.ch
 Acq On : 09 Aug 2022 10:49
 Operator : AR\AJ
 Sample : PTOXCCC500
 Misc :
 ALS Vial : 6 Sample Multiplier: 1

Instrument :
 ECD_D
 ClientSampleId :
 PTOXCCC500

Integration File signal 1: autoint1.e
 Integration File signal 2: autoint2.e
 Quant Time: Aug 10 02:45:04 2022
 Quant Method : Z:\pestpcbsrv\HPCHEM1\ECD_D\Method\DTX072622.M
 Quant Title : GC Extractables
 QLast Update : Tue Jul 26 04:20:10 2022
 Response via : Initial Calibration
 Integrator: ChemStation

Volume Inj. : 1 µl
 Signal #1 Phase : ZB-MR2 Signal #2 Phase: ZB-MR1
 Signal #1 Info : 30M x 0.32mm x0.2 Signal #2 Info : 30M x 0.32mm x 0.50µm

Compound	RT#1	RT#2	Resp#1	Resp#2	ng/ml	ng/ml

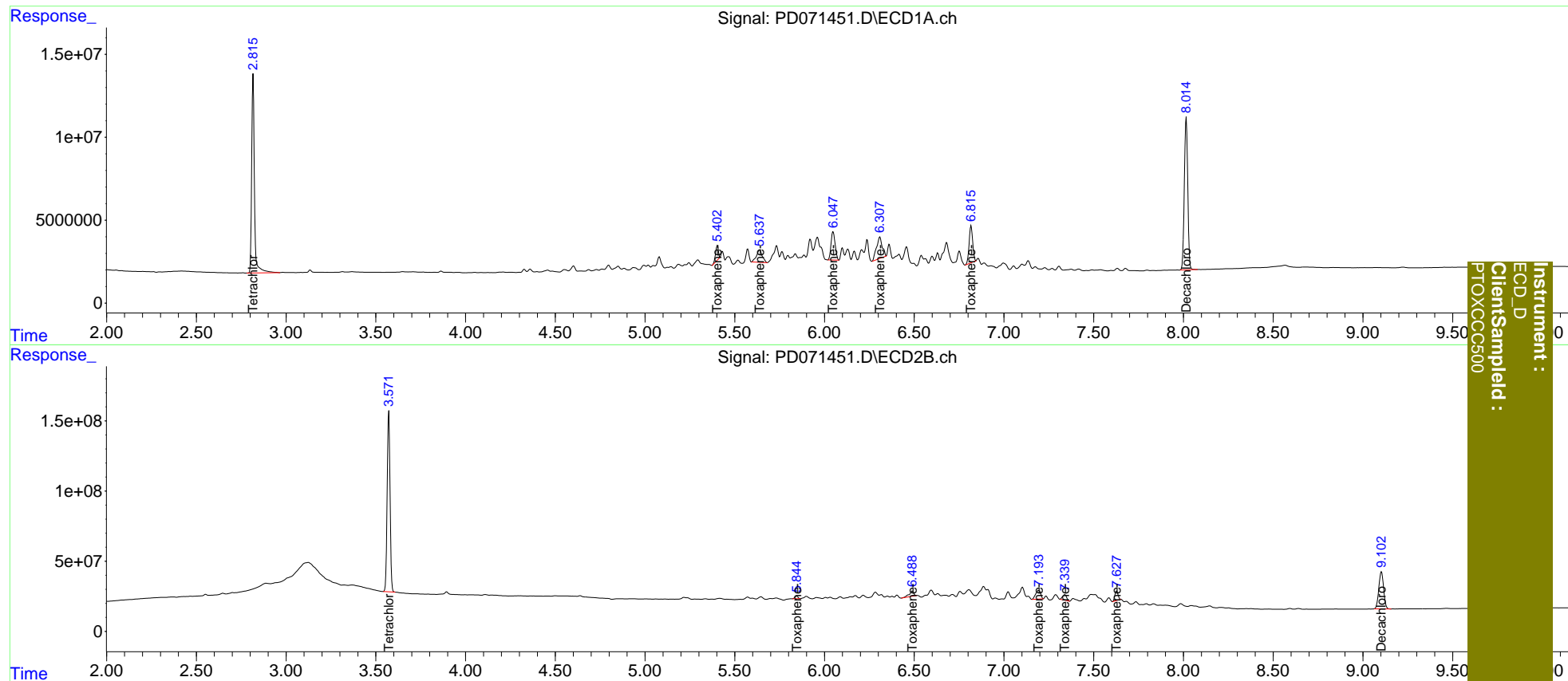
System Monitoring Compounds						
1) SA Tetrachlo...	2.816	3.572	126.9E6	1427.3E6	48.231	53.764
7) SA Decachlor...	8.016	9.103	121.7E6	495.0E6	47.393	52.443
Target Compounds						
2) Toxaphene-1	5.403	5.845	9377568	21628169	490.767	549.289
3) Toxaphene-2	5.639	6.489	16879520	65168773	449.921	508.832
4) Toxaphene-3	6.048	7.194	27021126	120.3E6	464.328	519.295
5) Toxaphene-4	6.309	7.339	28529376	63091934	482.373	493.118
6) Toxaphene-5	6.817	7.628	30487651	85911138	509.358	514.580

(f)=RT Delta > 1/2 Window (#)=Amounts differ by > 25% (m)=manual int.

Data Path : Z:\pestpcbsrv\HPCHEM1\ECD_D\Data\PD080922\
 Data File : PD071451.D
 Signal(s) : Signal #1: ECD1A.ch Signal #2: ECD2B.ch
 Acq On : 09 Aug 2022 10:49
 Operator : AR\AJ
 Sample : PTOXCCC500
 Misc :
 ALS Vial : 6 Sample Multiplier: 1

Integration File signal 1: autoint1.e
 Integration File signal 2: autoint2.e
 Quant Time: Aug 10 02:45:04 2022
 Quant Method : Z:\pestpcbsrv\HPCHEM1\ECD_D\Method\DTX072622.M
 Quant Title : GC Extractables
 QLast Update : Tue Jul 26 04:20:10 2022
 Response via : Initial Calibration
 Integrator: ChemStation

Volume Inj. : 1 µl
 Signal #1 Phase : ZB-MR2 Signal #2 Phase: ZB-MR1
 Signal #1 Info : 30M x 0.32mm x0.2 Signal #2 Info : 30M x 0.32mm x 0.50µm



Instrument :
 ECD_D
 ClientSampled :
 PTOXCCC500