

Data Path : Z:\pestpcbsrv\HPCHEM1\ECD\_D\Data\PD081118\  
 Data File : PD048840.D  
 Signal(s) : Signal #1: ECD1A.CH Signal #2: ECD2B.CH  
 Acq On : 10 Aug 2018 21:19  
 Operator : AJ\SJ  
 Sample : J4282-04  
 Misc :  
 ALS Vial : 28 Sample Multiplier: 1

Instrument :  
 ECD\_D  
 ClientSampleId :  
 SU-02-080918-B

Integration File signal 1: autoint1.e  
 Integration File signal 2: autoint2.e  
 Quant Time: Aug 11 00:45:50 2018  
 Quant Method : Z:\pestpcbsrv\HPCHEM1\ECD\_D\Method\PD073118.M  
 Quant Title : GC Extractables  
 QLast Update : Wed Aug 01 04:28:20 2018  
 Response via : Initial Calibration  
 Integrator: ChemStation 6890 Scale Mode: Large solvent peaks clipped

Volume Inj. : 2 µl  
 Signal #1 Phase : ZB-MR2 Signal #2 Phase: ZB-MR1  
 Signal #1 Info : 30M x 0.32mm x0.2 Signal #2 Info : 30M x 0.32mm x 0.50µm

Compound	RT#1	RT#2	Resp#1	Resp#2	ng/ml	ng/ml
System Monitoring Compounds						
1) SA Tetrachlo...	3.371	3.969	25523658	345.5E6	23.023	25.735
28) SA Decachlor...	8.068	8.995	29276130	334.5E6	20.907	22.148
Target Compounds						
3) MA gamma-BHC...	4.080	0.000	4332376	0	2.388	N.D. #
4) MA Heptachlor	0.000	5.120	0	17888863	N.D.	0.950 #
6) B beta-BHC	4.292f	0.000	2607501	0	3.653	N.D. #
7) B delta-BHC	0.000	4.998	0	36466098	N.D.	1.946 #
8) B Heptachlo...	5.116f	0.000	350642	0	0.229	N.D. #
9) A Endosulfan I	5.358	0.000	71105	0	0.050	N.D. #
10) B gamma-Chl...	5.273	0.000	379485	0	0.245	N.D. #
11) B alpha-Chl...	5.339	0.000	246755	0	0.163	N.D. #
12) B 4,4'-DDE	5.520	0.000	87275	0	0.056	N.D. #
14) MA Endrin	5.902	0.000	323090	0	0.202	N.D. #
16) A 4,4'-DDD	6.029	0.000	593702	0	0.423	N.D. #
19) B Endosulfa...	6.550	0.000	107822	0	0.081	N.D. #
20) A Methoxychlor	6.738f	0.000	222329	0	0.285	N.D. #
23) Chlordane-1	4.257	4.998	1212021	36466098	24.036	49.660 #
25) Chlordane-3	5.273	0.000	379485	0	2.277	N.D. #
26) Chlordane-4	5.339	0.000	246755	0	1.651	N.D. #

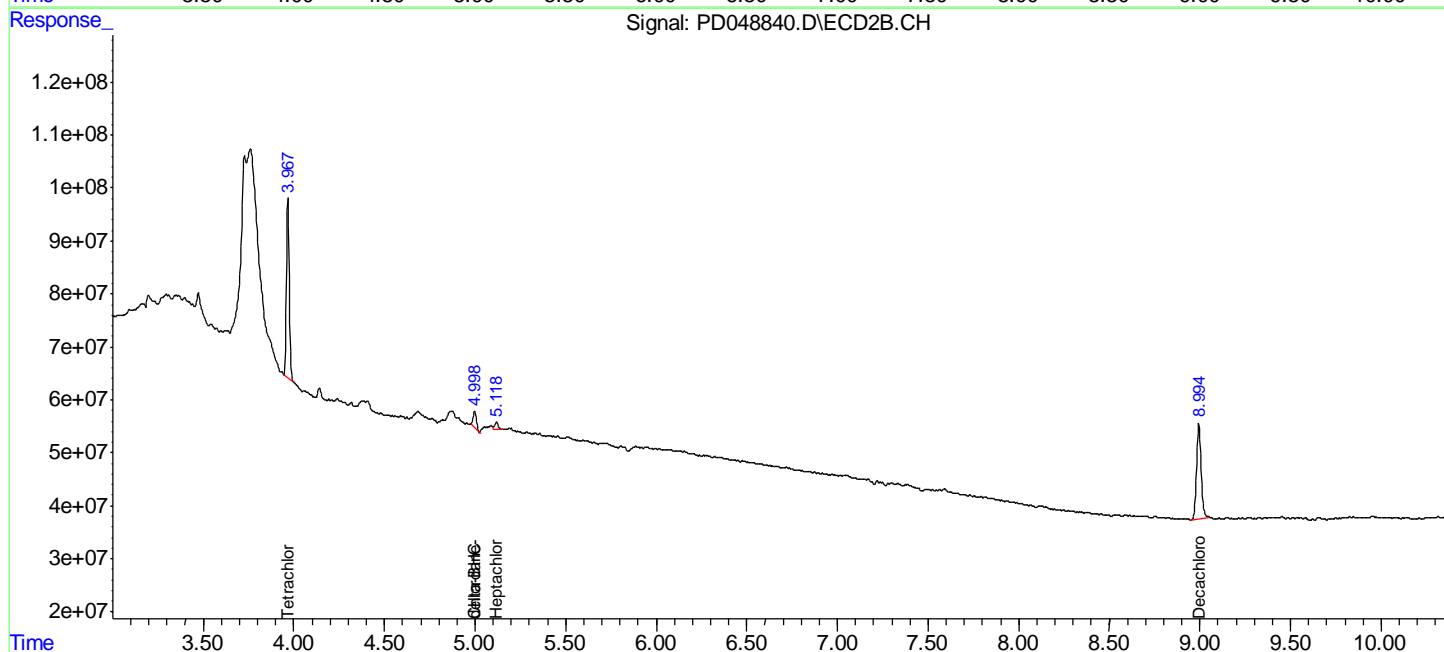
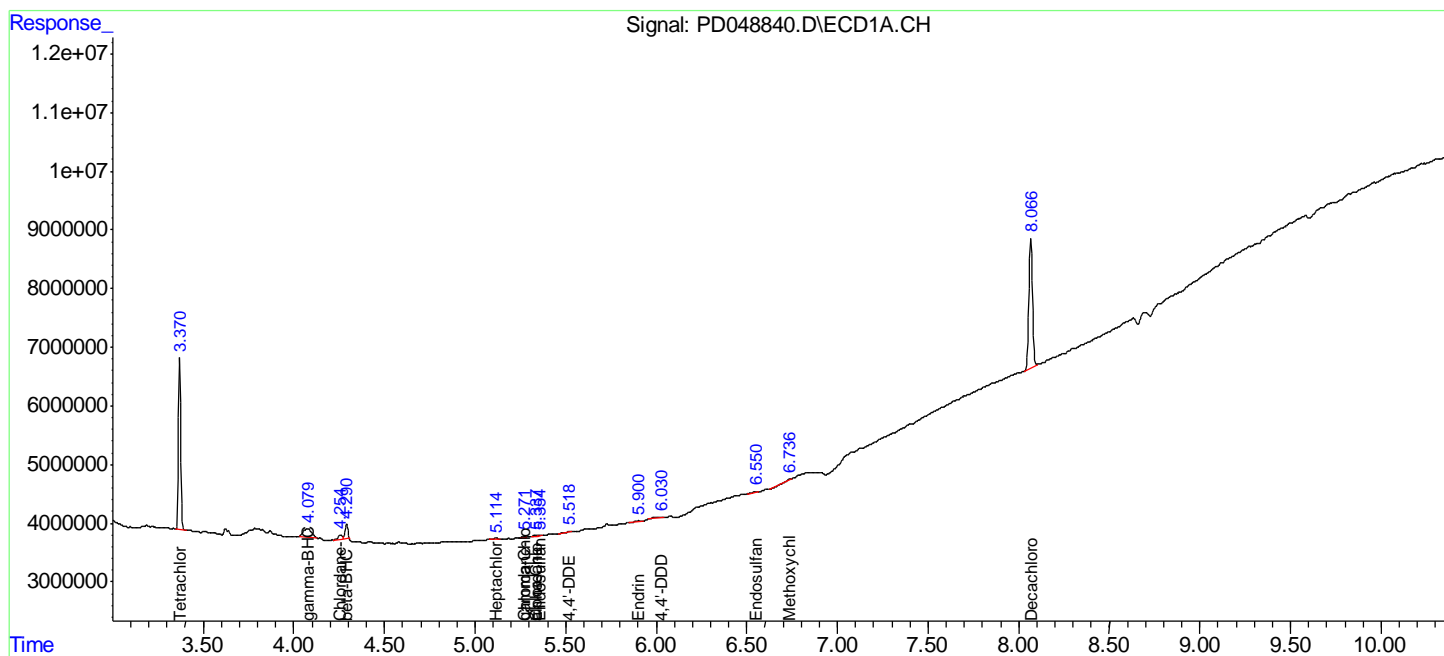
(f)=RT Delta > 1/2 Window (#)=Amounts differ by > 25% (m)=manual int.

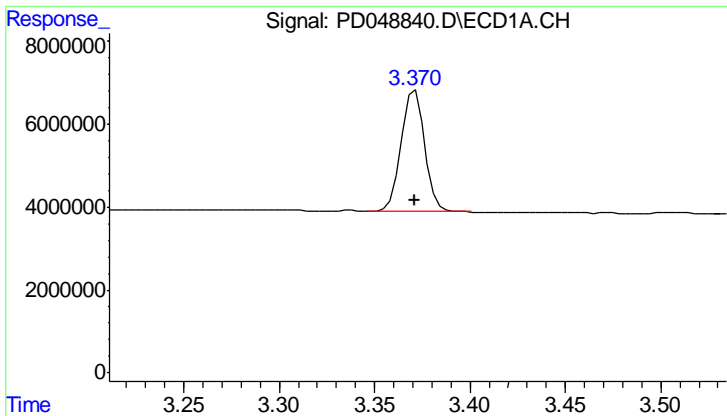
Data Path : Z:\pestpcbsrv\HPCHEM1\ECD\_D\Data\PD081118\  
 Data File : PD048840.D  
 Signal(s) : Signal #1: ECD1A.CH Signal #2: ECD2B.CH  
 Acq On : 10 Aug 2018 21:19  
 Operator : AJ\SJ  
 Sample : J4282-04  
 Misc :  
 ALS Vial : 28 Sample Multiplier: 1

Instrument :  
 ECD\_D  
 Client Sampled :  
 SU-02-080918-B

Integration File signal 1: autoint1.e  
 Integration File signal 2: autoint2.e  
 Quant Time: Aug 11 00:45:50 2018  
 Quant Method : Z:\pestpcbsrv\HPCHEM1\ECD\_D\Method\PD073118.M  
 Quant Title : GC Extractables  
 QLast Update : Wed Aug 01 04:28:20 2018  
 Response via : Initial Calibration  
 Integrator: ChemStation 6890 Scale Mode: Large solvent peaks clipped

Volume Inj. : 2 µl  
 Signal #1 Phase : ZB-MR2 Signal #2 Phase: ZB-MR1  
 Signal #1 Info : 30M x 0.32mm x0.2 Signal #2 Info : 30M x 0.32mm x 0.50µm

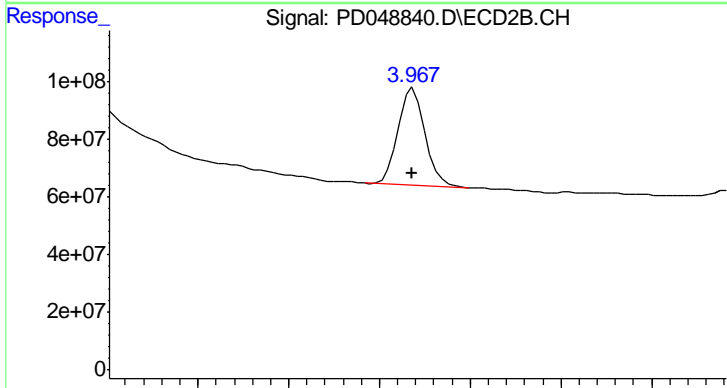




#1 Tetrachloro-m-xylene

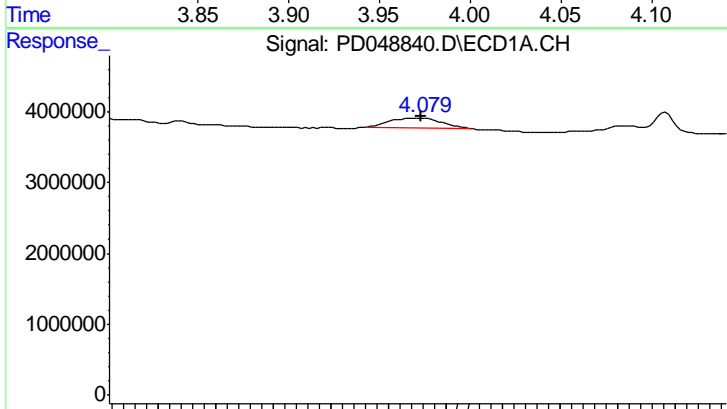
R.T.: 3.371 min  
 Delta R.T.: 0.000 min  
 Response: 25523658  
 Conc: 23.02 ng/ml

Instrument :  
 ECD\_D  
 ClientSampled :  
 SU-02-080918-B



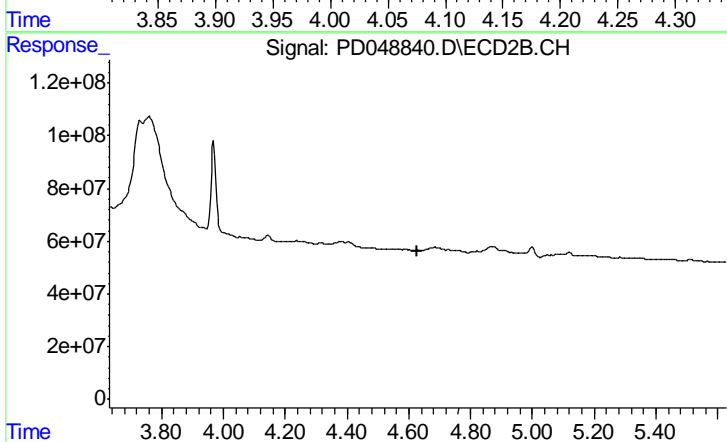
#1 Tetrachloro-m-xylene

R.T.: 3.969 min  
 Delta R.T.: 0.000 min  
 Response: 345455454  
 Conc: 25.73 ng/ml



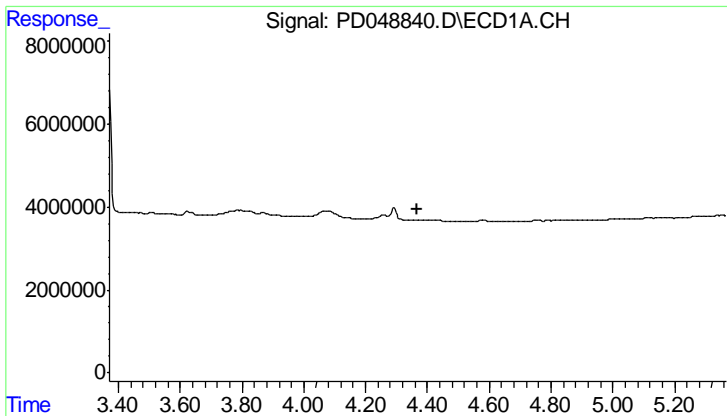
#3 gamma-BHC (Lindane)

R.T.: 4.080 min  
 Delta R.T.: 0.000 min  
 Response: 4332376  
 Conc: 2.39 ng/ml



#3 gamma-BHC (Lindane)

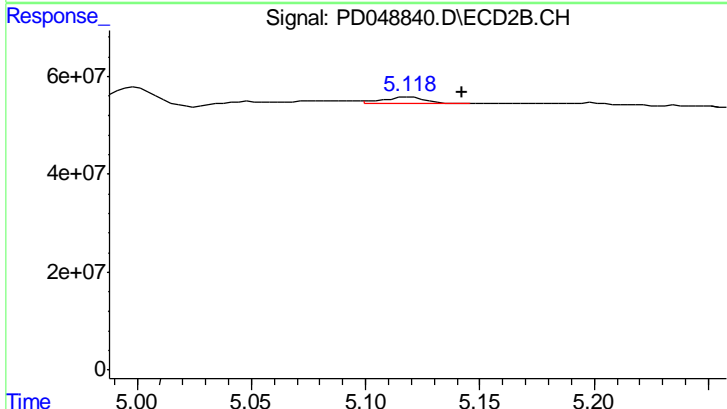
R.T.: 0.000 min  
 Exp R.T. : 4.630 min  
 Response: 0  
 Conc: N.D.



#4 Heptachlor

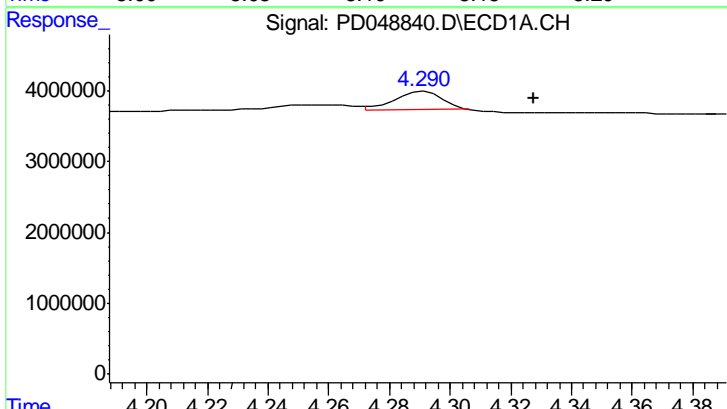
R.T.: 0.000 min  
 Exp R.T.: 4.368 min  
 Response: 0  
 Conc: N.D.

Instrument :  
 ECD\_D  
 ClientSampled :  
 SU-02-080918-B



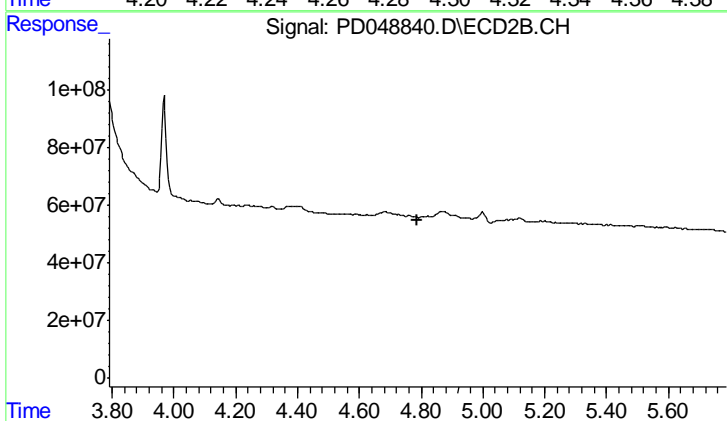
#4 Heptachlor

R.T.: 5.120 min  
 Delta R.T.: -0.023 min  
 Response: 17888863  
 Conc: 0.95 ng/ml



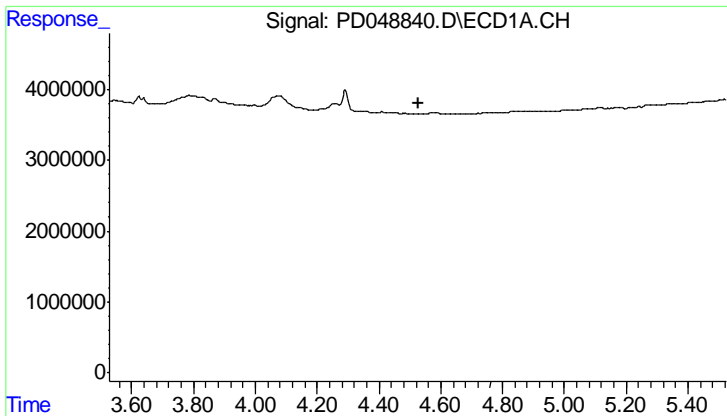
#6 beta-BHC

R.T.: 4.292 min  
 Delta R.T.: -0.036 min  
 Response: 2607501  
 Conc: 3.65 ng/ml



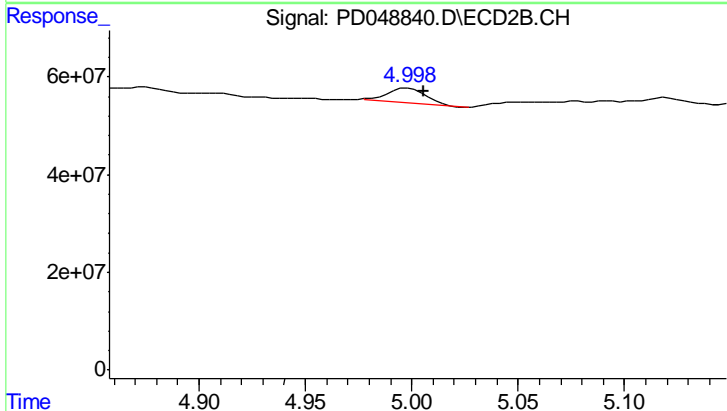
#6 beta-BHC

R.T.: 0.000 min  
 Exp R.T.: 4.789 min  
 Response: 0  
 Conc: N.D.

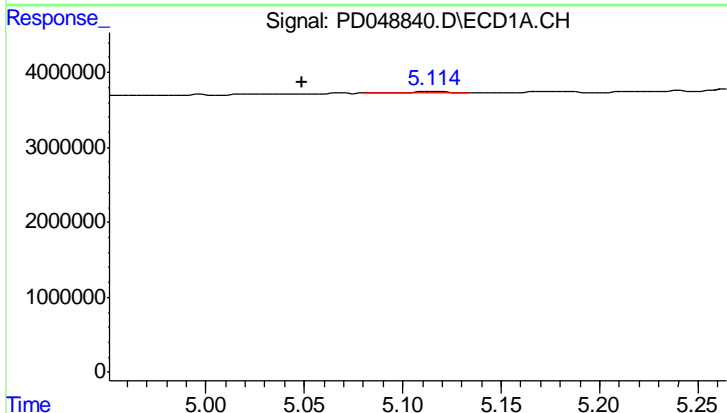


#7 delta-BHC  
 R.T.: 0.000 min  
 Exp R.T.: 4.526 min  
 Response: 0  
 Conc: N.D.

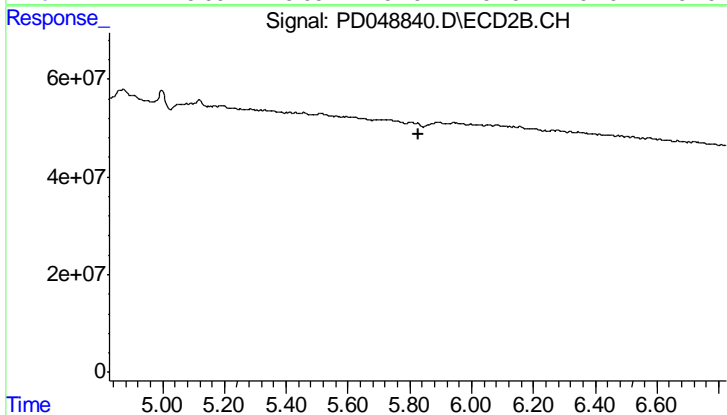
Instrument :  
 ECD\_D  
 ClientSampleId :  
 SU-02-080918-B



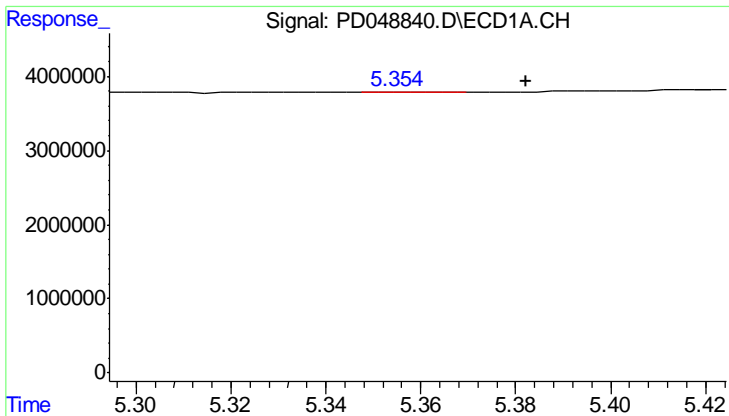
#7 delta-BHC  
 R.T.: 4.998 min  
 Delta R.T.: -0.007 min  
 Response: 36466098  
 Conc: 1.95 ng/ml



#8 Heptachlor epoxide  
 R.T.: 5.116 min  
 Delta R.T.: 0.067 min  
 Response: 350642  
 Conc: 0.23 ng/ml

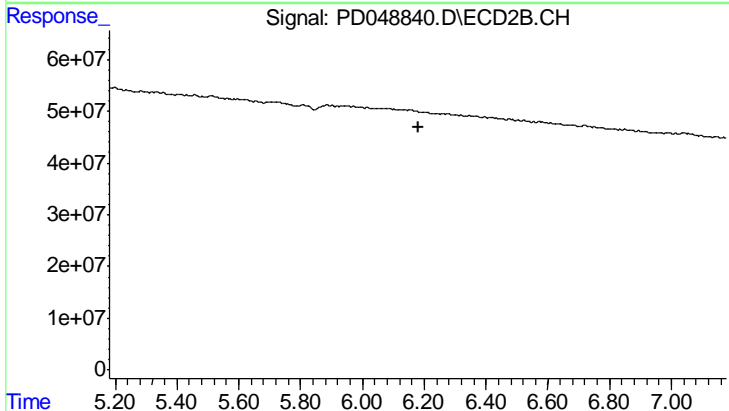


#8 Heptachlor epoxide  
 R.T.: 0.000 min  
 Exp R.T.: 5.826 min  
 Response: 0  
 Conc: N.D.

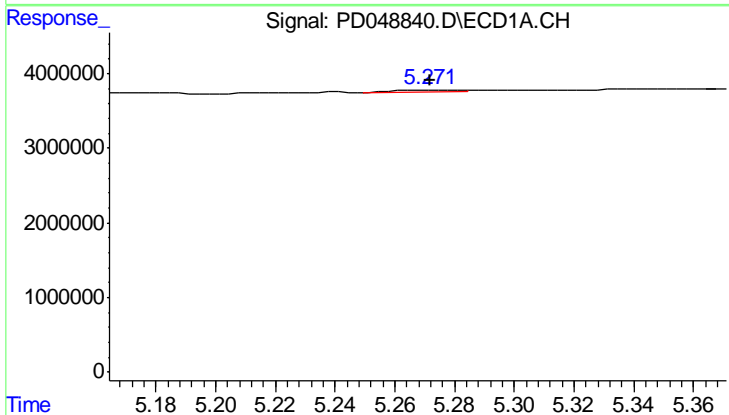


#9 Endosulfan I  
 R.T.: 5.358 min  
 Delta R.T.: -0.024 min  
 Response: 71105  
 Conc: 0.05 ng/ml

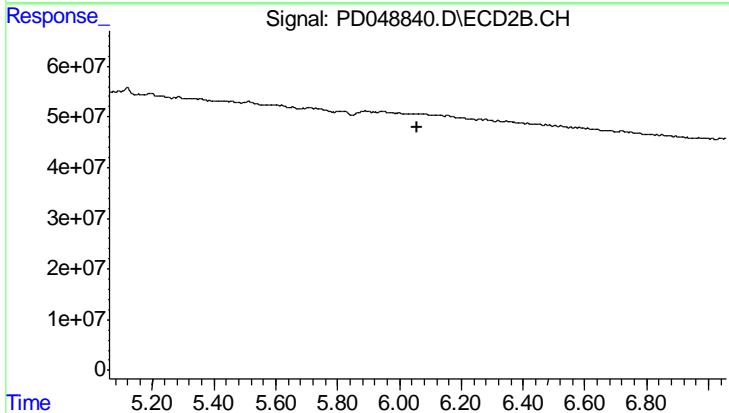
Instrument :  
 ECD\_D  
 ClientSampleId :  
 SU-02-080918-B



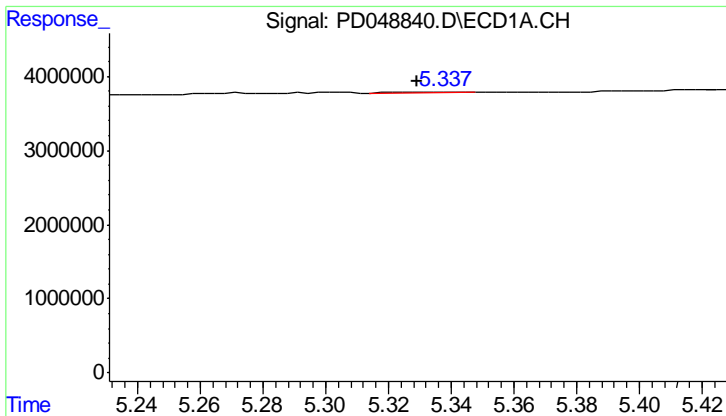
#9 Endosulfan I  
 R.T.: 0.000 min  
 Exp R.T. : 6.180 min  
 Response: 0  
 Conc: N.D.



#10 gamma-Chlordane  
 R.T.: 5.273 min  
 Delta R.T.: 0.001 min  
 Response: 379485  
 Conc: 0.24 ng/ml

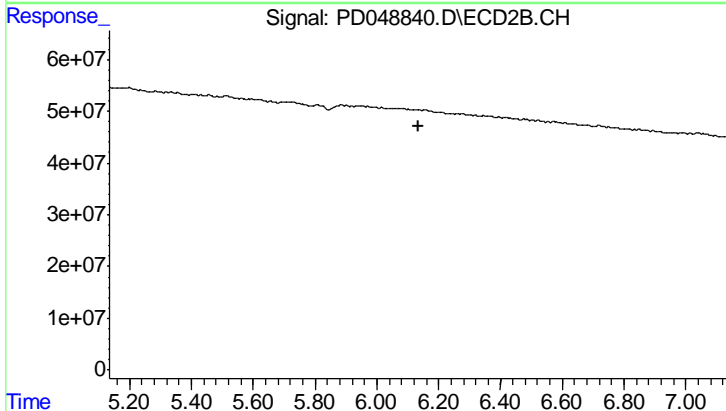


#10 gamma-Chlordane  
 R.T.: 0.000 min  
 Exp R.T. : 6.059 min  
 Response: 0  
 Conc: N.D.

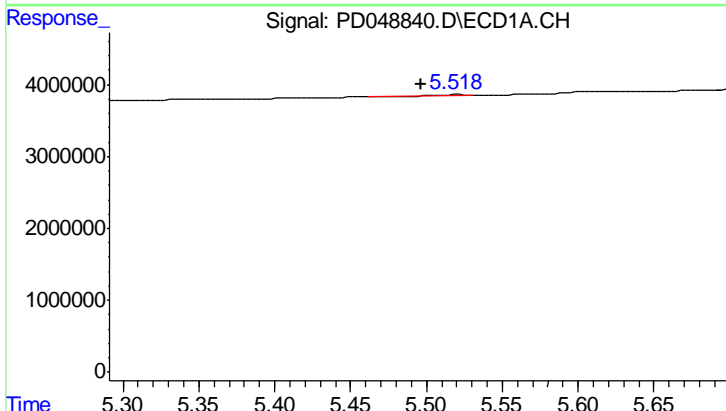


#11 alpha-Chlordane  
 R.T.: 5.339 min  
 Delta R.T.: 0.010 min  
 Response: 246755  
 Conc: 0.16 ng/ml

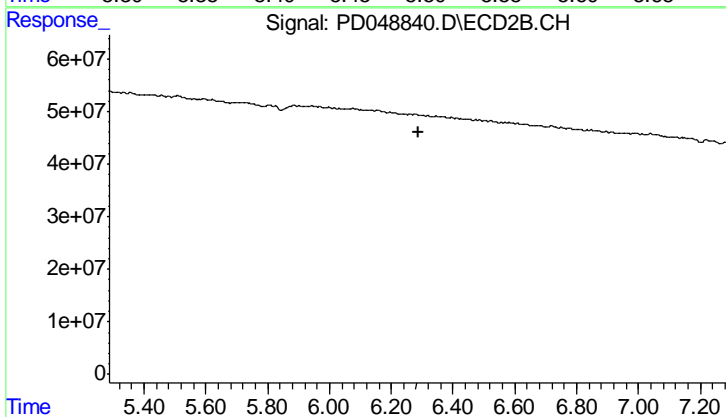
Instrument :  
 ECD\_D  
 ClientSampleId :  
 SU-02-080918-B



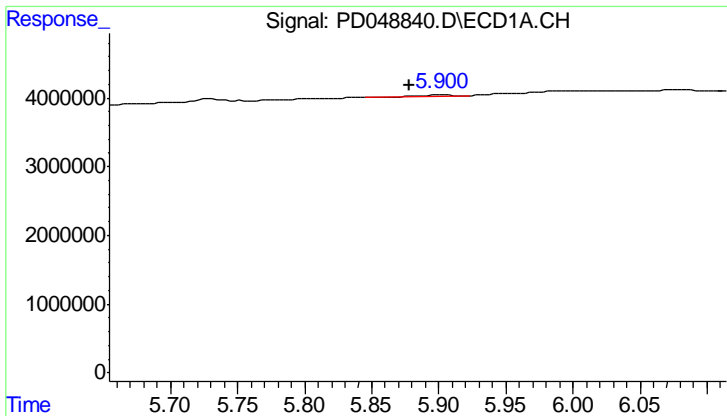
#11 alpha-Chlordane  
 R.T.: 0.000 min  
 Exp R.T. : 6.133 min  
 Response: 0  
 Conc: N.D.



#12 4,4'-DDE  
 R.T.: 5.520 min  
 Delta R.T.: 0.023 min  
 Response: 87275  
 Conc: 0.06 ng/ml



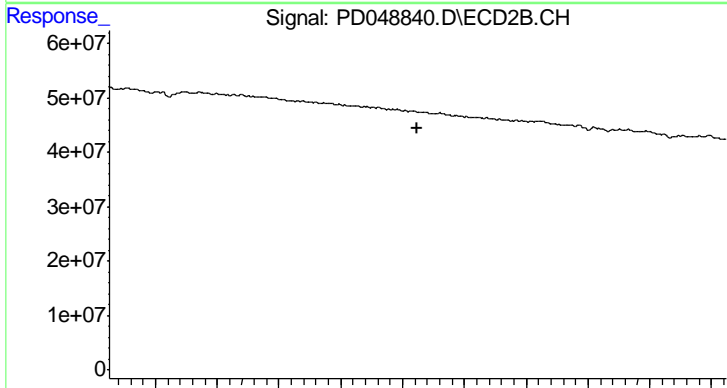
#12 4,4'-DDE  
 R.T.: 0.000 min  
 Exp R.T. : 6.287 min  
 Response: 0  
 Conc: N.D.



#14 Endrin

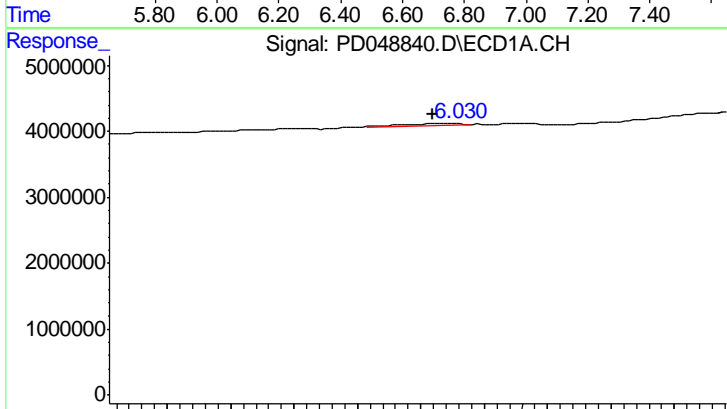
R.T.: 5.902 min  
 Delta R.T.: 0.024 min  
 Response: 323090  
 Conc: 0.20 ng/ml

Instrument :  
 ECD\_D  
 ClientSampleId :  
 SU-02-080918-B



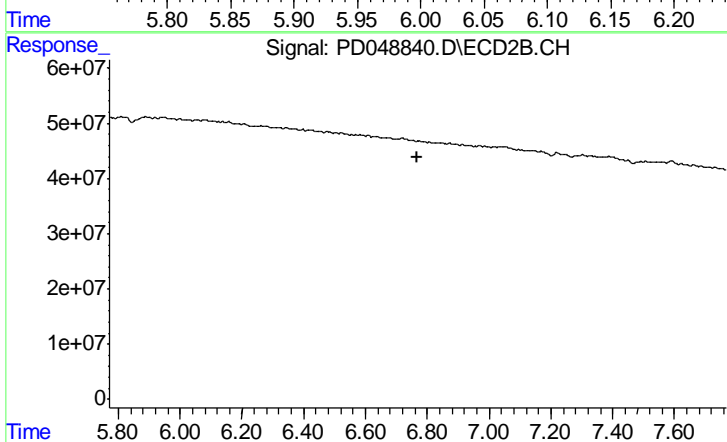
#14 Endrin

R.T.: 0.000 min  
 Exp R.T. : 6.649 min  
 Response: 0  
 Conc: N.D.



#16 4,4'-DDD

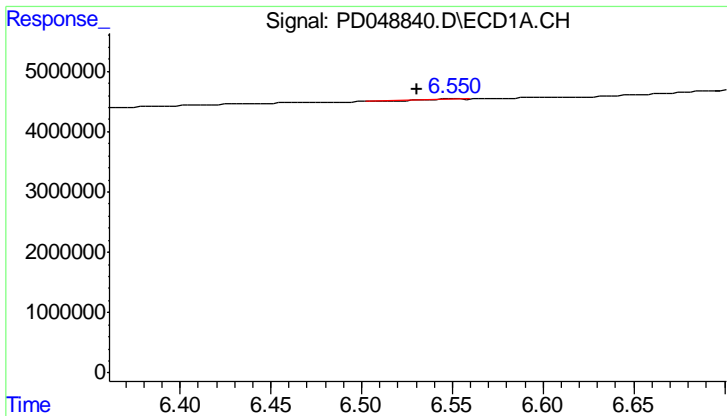
R.T.: 6.029 min  
 Delta R.T.: 0.020 min  
 Response: 593702  
 Conc: 0.42 ng/ml



#16 4,4'-DDD

R.T.: 0.000 min  
 Exp R.T. : 6.769 min  
 Response: 0  
 Conc: N.D.

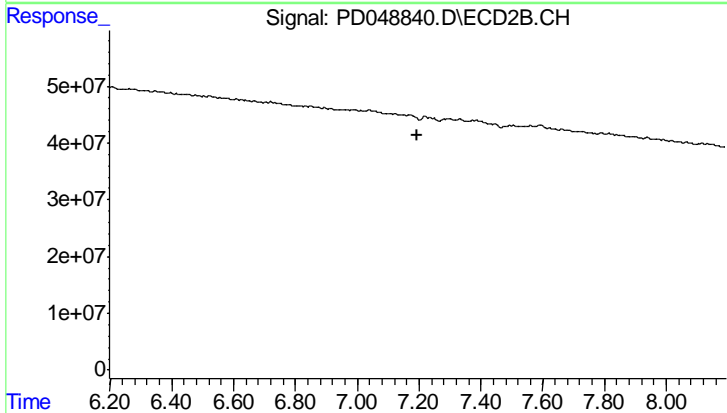




#19 Endosulfan Sulfate

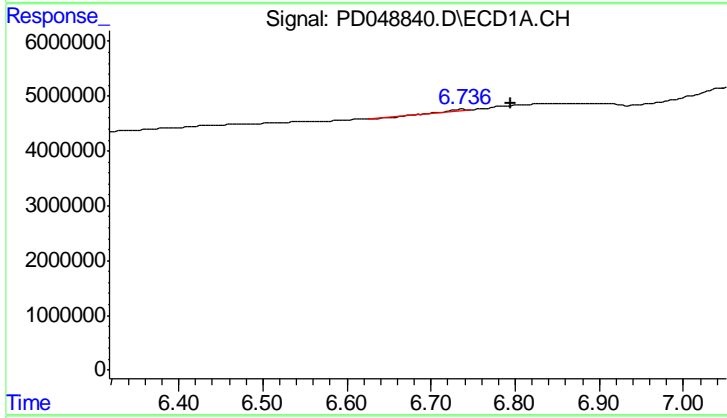
R.T.: 6.550 min  
 Delta R.T.: 0.020 min  
 Response: 107822  
 Conc: 0.08 ng/ml

Instrument :  
 ECD\_D  
 ClientSampleId :  
 SU-02-080918-B



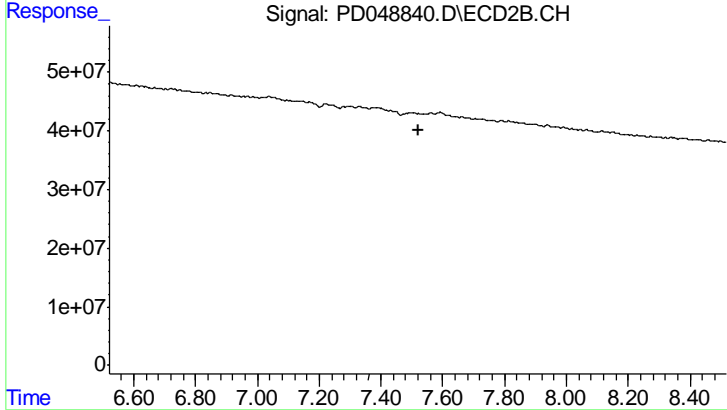
#19 Endosulfan Sulfate

R.T.: 0.000 min  
 Exp R.T. : 7.196 min  
 Response: 0  
 Conc: N.D.



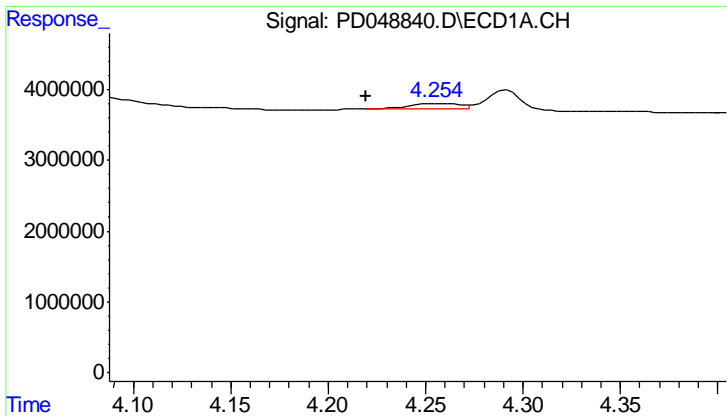
#20 Methoxychlor

R.T.: 6.738 min  
 Delta R.T.: -0.057 min  
 Response: 222329  
 Conc: 0.29 ng/ml



#20 Methoxychlor

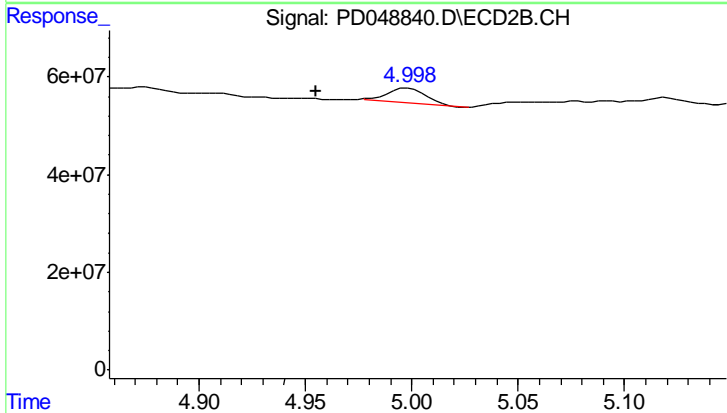
R.T.: 0.000 min  
 Exp R.T. : 7.521 min  
 Response: 0  
 Conc: N.D.



#23 Chlordane-1

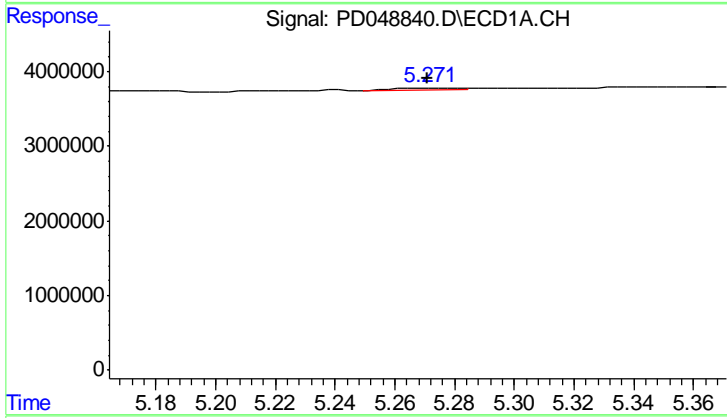
R.T.: 4.257 min  
 Delta R.T.: 0.038 min  
 Response: 1212021  
 Conc: 24.04 ng/ml

Instrument :  
 ECD\_D  
 ClientSampleId :  
 SU-02-080918-B



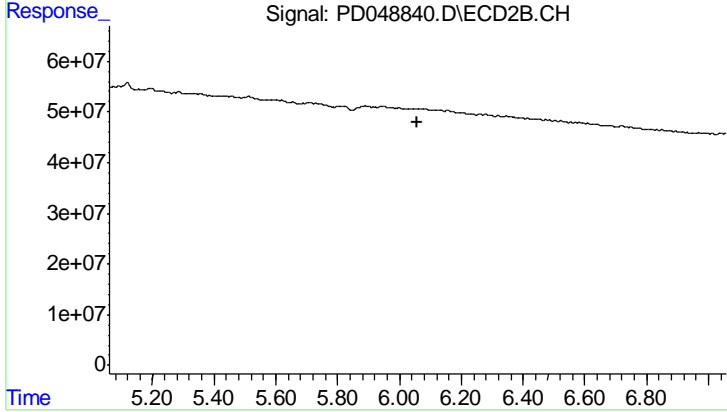
#23 Chlordane-1

R.T.: 4.998 min  
 Delta R.T.: 0.043 min  
 Response: 36466098  
 Conc: 49.66 ng/ml



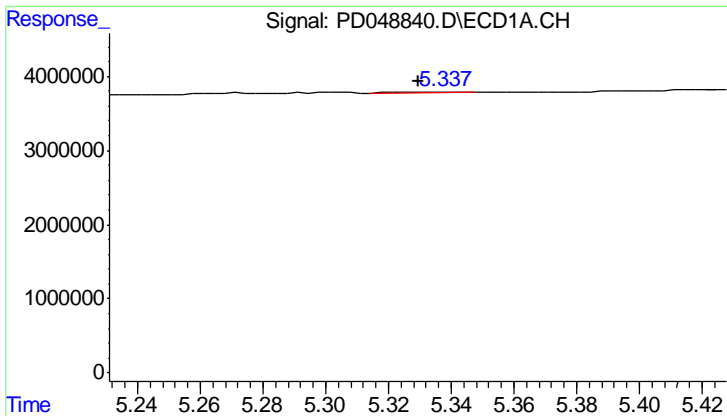
#25 Chlordane-3

R.T.: 5.273 min  
 Delta R.T.: 0.002 min  
 Response: 379485  
 Conc: 2.28 ng/ml



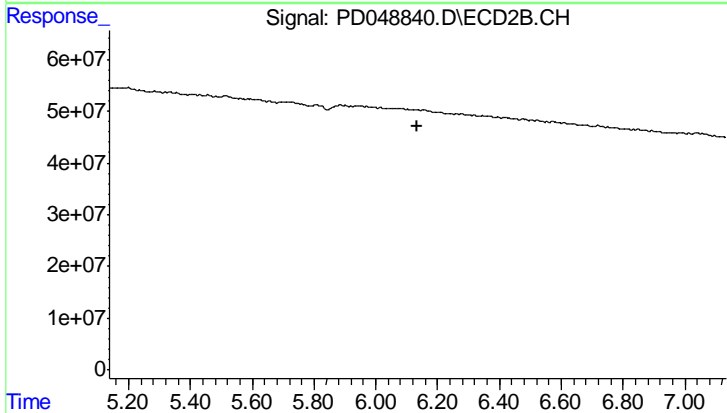
#25 Chlordane-3

R.T.: 0.000 min  
 Exp R.T. : 6.059 min  
 Response: 0  
 Conc: N.D.

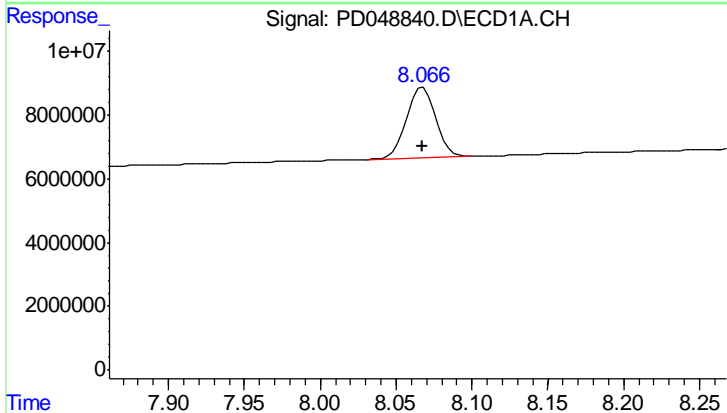


#26 Chlordane-4  
 R.T.: 5.339 min  
 Delta R.T.: 0.009 min  
 Response: 246755  
 Conc: 1.65 ng/ml

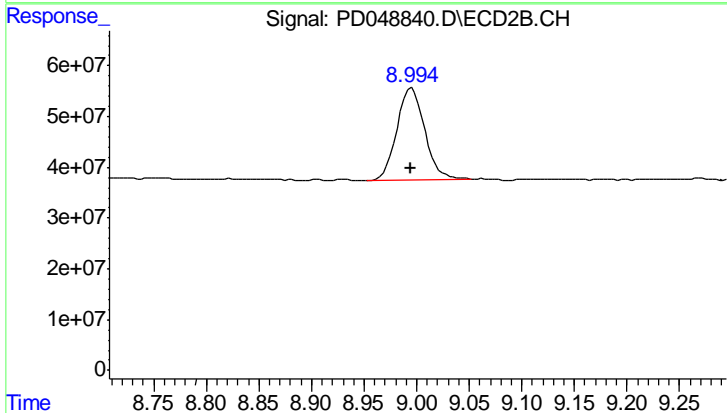
Instrument :  
 ECD\_D  
 ClientSampleId :  
 SU-02-080918-B



#26 Chlordane-4  
 R.T.: 0.000 min  
 Exp R.T.: 6.135 min  
 Response: 0  
 Conc: N.D.



#28 Decachlorobiphenyl  
 R.T.: 8.068 min  
 Delta R.T.: 0.000 min  
 Response: 29276130  
 Conc: 20.91 ng/ml



#28 Decachlorobiphenyl  
 R.T.: 8.995 min  
 Delta R.T.: 0.001 min  
 Response: 334497035  
 Conc: 22.15 ng/ml