

Data Path : Z:\pestpcbsrv\HPCHEM1\ECD_D\Data\PD081122\
 Data File : PD071497.D
 Signal(s) : Signal #1: ECD1A.ch Signal #2: ECD2B.ch
 Acq On : 10 Aug 2022 22:37
 Operator : AR\AJ
 Sample : PEM294
 Misc :
 ALS Vial : 3 Sample Multiplier: 1

Integration File signal 1: autoint1.e
 Integration File signal 2: autoint2.e
 Quant Time: Aug 11 04:39:32 2022
 Quant Method : Z:\pestpcbsrv\HPCHEM1\ECD_D\Method\PD081122CLP.M
 Quant Title : GC Extractables
 QLast Update : Thu Aug 11 04:21:34 2022
 Response via : Initial Calibration
 Integrator: ChemStation

Volume Inj. : 1 µl
 Signal #1 Phase : ZB-MR2 Signal #2 Phase: ZB-MR1
 Signal #1 Info : 30M x 0.32mm x0.2 Signal #2 Info : 30M x 0.32mm x 0.50µm

	Compound	RT#1	RT#2	Resp#1	Resp#2	ng/ml	ng/ml

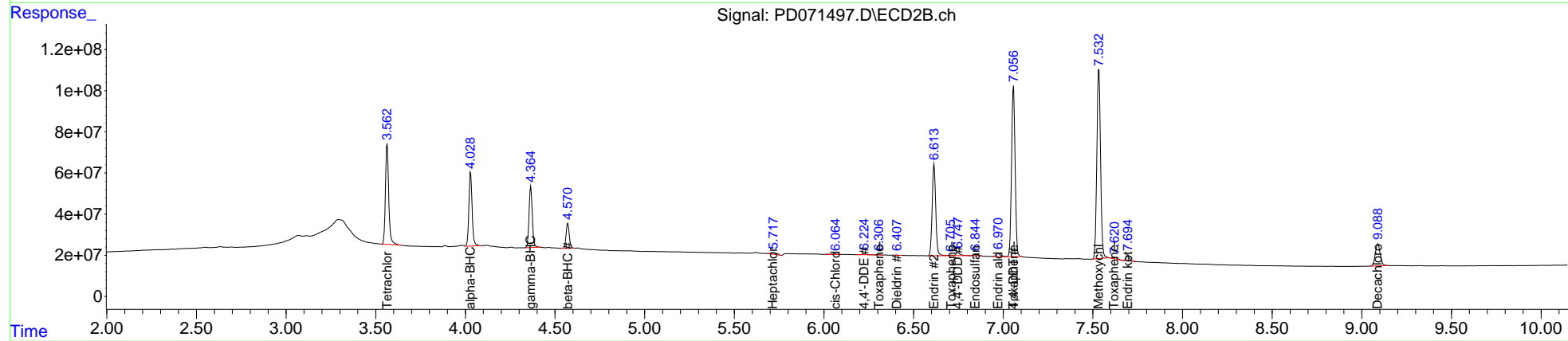
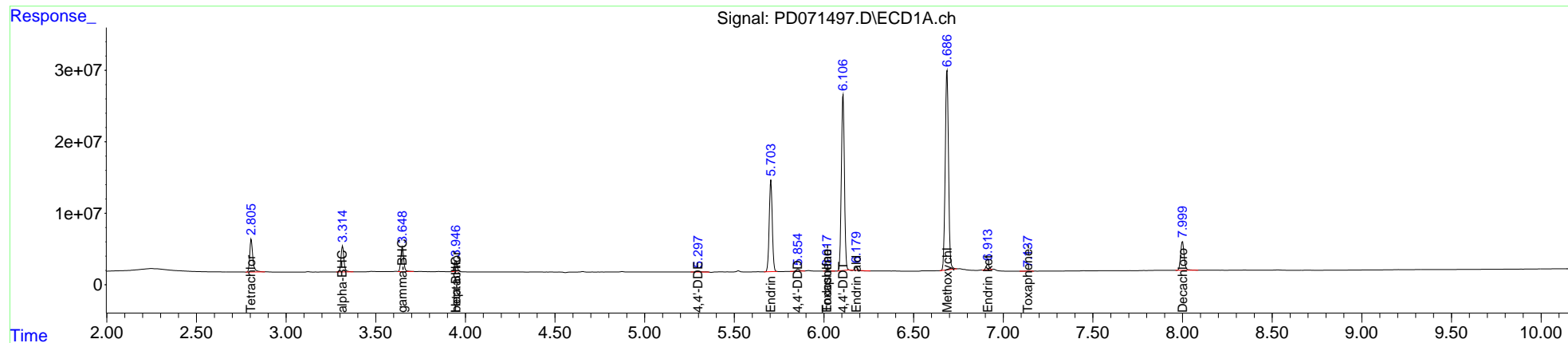
System Monitoring Compounds							
1)	SA Tetrachlo...	2.806	3.564	53871653	621.4E6	18.885	18.958
2)	SA Decachlor...	8.000	9.090	55150578	203.9E6	19.643	21.267
Target Compounds							
2)	A alpha-BHC	3.315	4.029	40143628	448.5E6	9.758	10.620
3)	MA gamma-BHC...	3.649	4.365	38606233	374.3E6	9.809	10.650
4)	MA Heptachlor	3.947f	0.000	15297324	0	3.761	N.D. #
6)	B beta-BHC	3.947	4.572	15297324	148.2E6	8.643	10.256
8)	B Heptachlo...	0.000	5.714	0	20339311	N.D.	1.022
9)	A Endosulfan I	0.000	6.104	0	257133	N.D.	<MDL
11)	B cis-Chlor...	0.000	6.063	0	1788945	N.D.	0.100
12)	B 4,4'-DDE	5.298	6.225	2153372	7429241	0.606	0.472
13)	MA Dieldrin	0.000	6.407	0	1761289	N.D.	0.106
14)	MA Endrin	5.704	6.614	152.5E6	615.5E6	46.514	48.501
15)	B Endosulfa...	6.018	6.845	1527450	11907422	0.490	0.911 #
16)	A 4,4'-DDD	5.855	6.748	3716456	24277616	1.366	1.994 #
17)	MA 4,4'-DDT	6.107	7.057	292.2E6	1140.2E6	103.421	96.385
18)	B Endrin al...	6.181	6.972	3798981	26273463	1.416	2.390 #
20)	A Methoxychlor	6.687	7.533	360.1E6	1323.5E6	249.435	251.615
21)	B Endrin ke...	6.914	7.695	8990929	38134275	2.631	2.906
22)	Toxaphene-1	0.000	6.306f	0	1643903	N.D.	13.507
23)	Toxaphene-2	5.802f	6.709f	-252329	5846390	N.D.	65.226
24)	Toxaphene-3	6.018	7.057f	1527450	1140.2E6	66.429	3397.399 #
26)	Toxaphene-5	7.138	7.619	544022	13118720	12.816	84.633 #

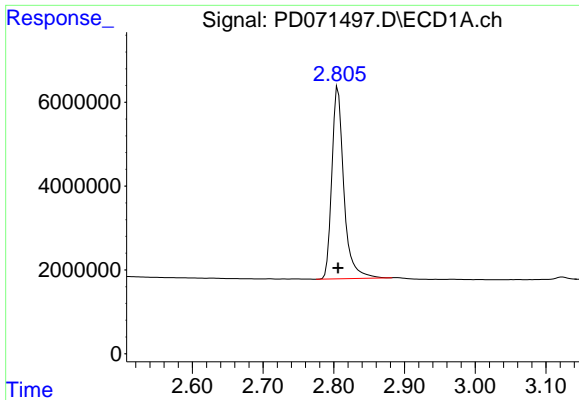
(f)=RT Delta > 1/2 Window (#)=Amounts differ by > 25% (m)=manual int.

Data Path : Z:\pestpcbsrv\HPCHEM1\ECD_D\Data\PD081122\
 Data File : PD071497.D
 Signal(s) : Signal #1: ECD1A.ch Signal #2: ECD2B.ch
 Acq On : 10 Aug 2022 22:37
 Operator : AR\AJ
 Sample : PEM294
 Misc :
 ALS Vial : 3 Sample Multiplier: 1

Integration File signal 1: autoint1.e
 Integration File signal 2: autoint2.e
 Quant Time: Aug 11 04:39:32 2022
 Quant Method : Z:\pestpcbsrv\HPCHEM1\ECD_D\Method\PD081122CLP.M
 Quant Title : GC Extractables
 QLast Update : Thu Aug 11 04:21:34 2022
 Response via : Initial Calibration
 Integrator: ChemStation

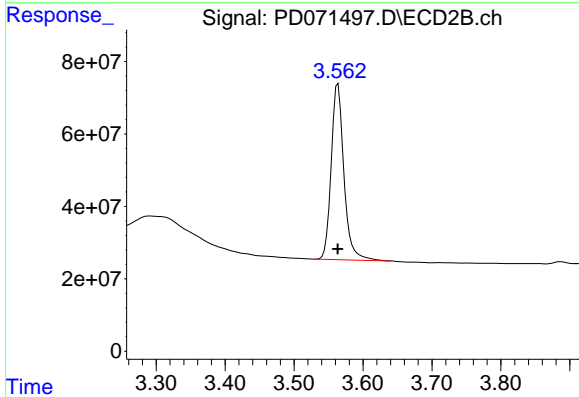
Volume Inj. : 1 µl
 Signal #1 Phase : ZB-MR2 Signal #2 Phase: ZB-MR1
 Signal #1 Info : 30M x 0.32mm x0.2 Signal #2 Info : 30M x 0.32mm x 0.50µm





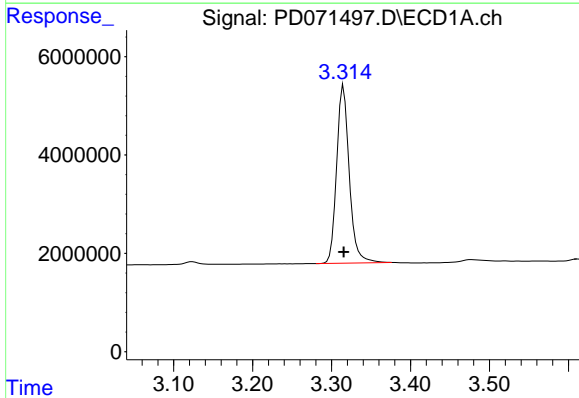
#1 Tetrachloro-m-xylene

R.T.: 2.806 min
Delta R.T.: 0.000 min
Response: 53871653
Conc: 18.89 ng/ml



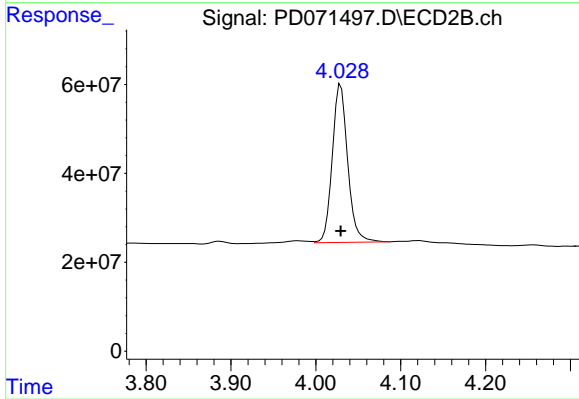
#1 Tetrachloro-m-xylene

R.T.: 3.564 min
Delta R.T.: 0.000 min
Response: 621423159
Conc: 18.96 ng/ml



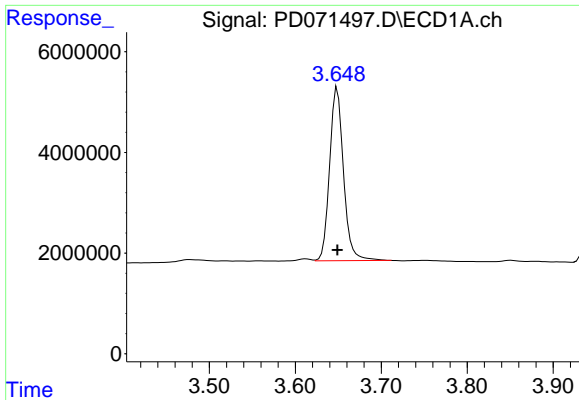
#2 alpha-BHC

R.T.: 3.315 min
Delta R.T.: 0.000 min
Response: 40143628
Conc: 9.76 ng/ml

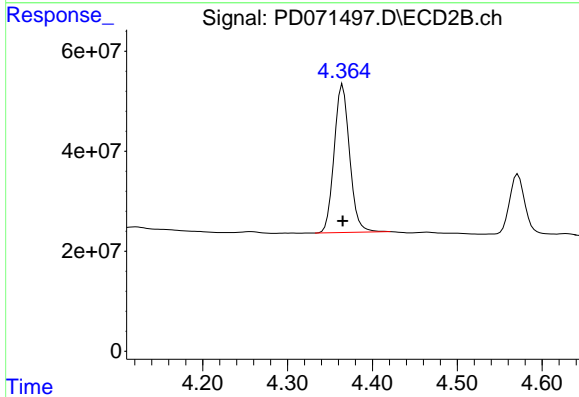


#2 alpha-BHC

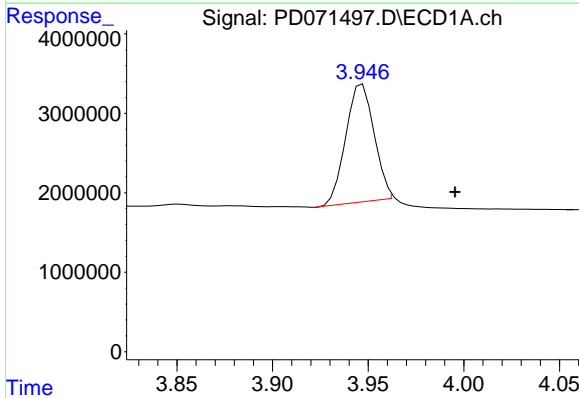
R.T.: 4.029 min
Delta R.T.: 0.000 min
Response: 448529091
Conc: 10.62 ng/ml



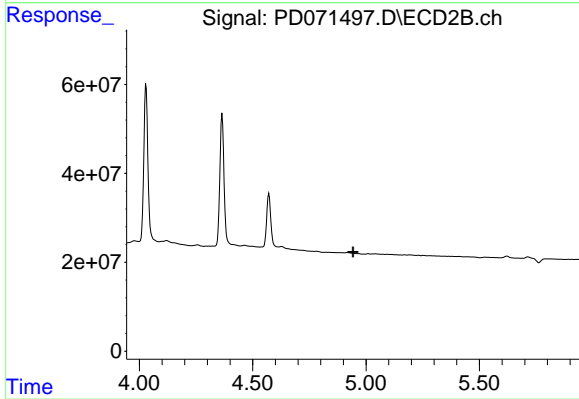
#3 gamma-BHC (Lindane)
 R.T.: 3.649 min
 Delta R.T.: 0.000 min
 Response: 38606233
 Conc: 9.81 ng/ml



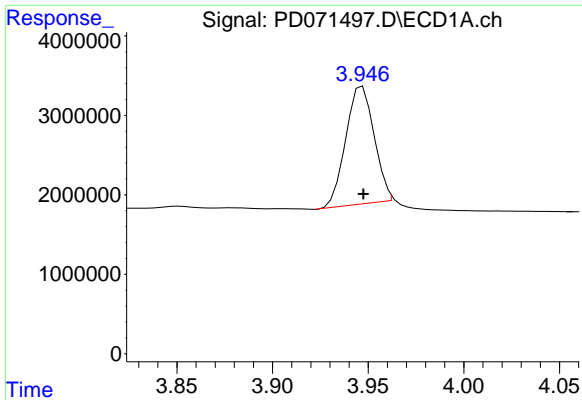
#3 gamma-BHC (Lindane)
 R.T.: 4.365 min
 Delta R.T.: 0.000 min
 Response: 374303239
 Conc: 10.65 ng/ml



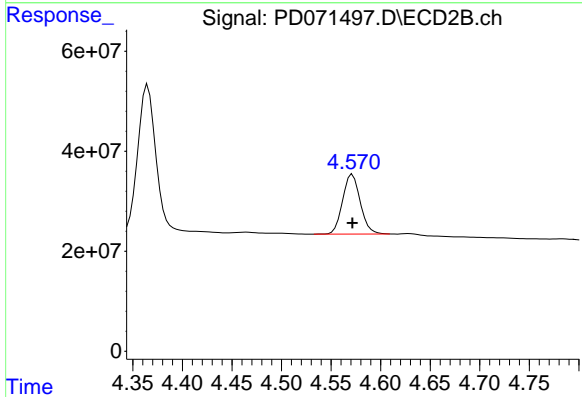
#4 Heptachlor
 R.T.: 3.947 min
 Delta R.T.: -0.048 min
 Response: 15297324
 Conc: 3.76 ng/ml



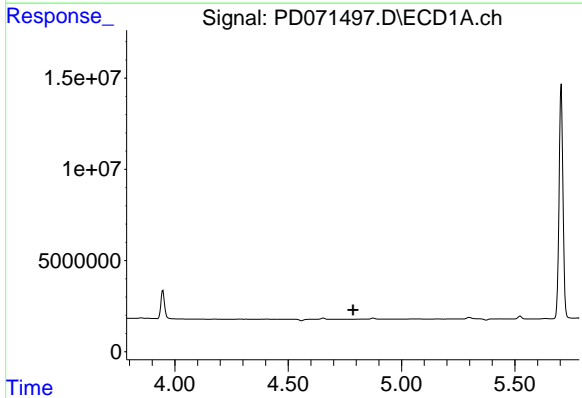
#4 Heptachlor
 R.T.: 0.000 min
 Exp R.T.: 4.942 min
 Response: 0
 Conc: N.D.



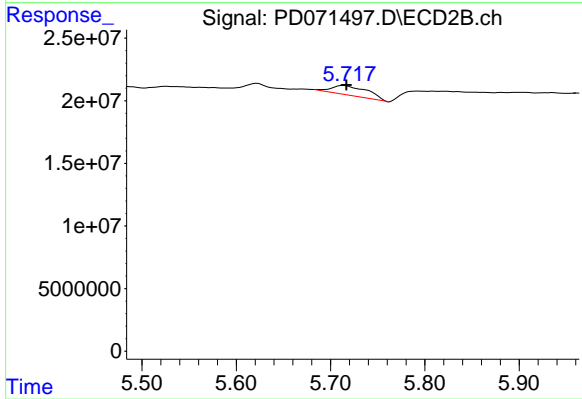
#6 beta-BHC
 R.T.: 3.947 min
 Delta R.T.: 0.000 min
 Response: 15297324
 Conc: 8.64 ng/ml



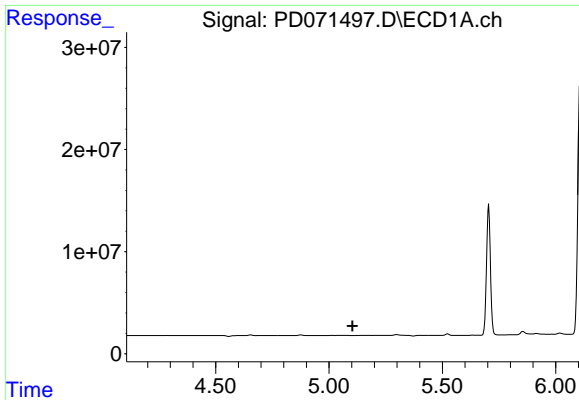
#6 beta-BHC
 R.T.: 4.572 min
 Delta R.T.: 0.000 min
 Response: 148151758
 Conc: 10.26 ng/ml



#8 Heptachlor epoxide
 R.T.: 0.000 min
 Exp R.T. : 4.786 min
 Response: 0
 Conc: N.D.

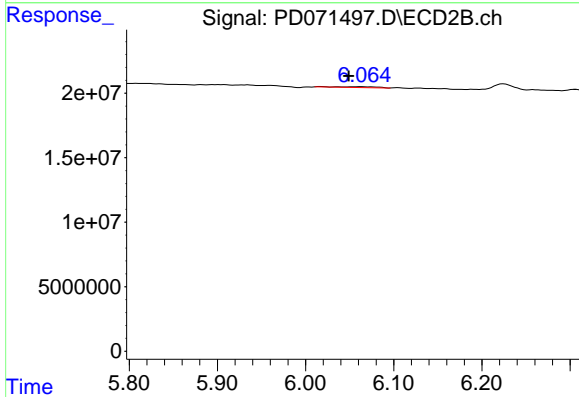


#8 Heptachlor epoxide
 R.T.: 5.714 min
 Delta R.T.: -0.003 min
 Response: 20339311
 Conc: 1.02 ng/ml



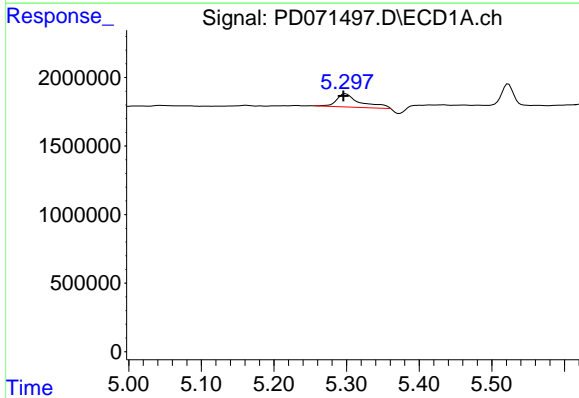
#11 cis-Chlordane

R.T.: 0.000 min
 Exp R.T. : 5.104 min
 Response: 0
 Conc: N.D.



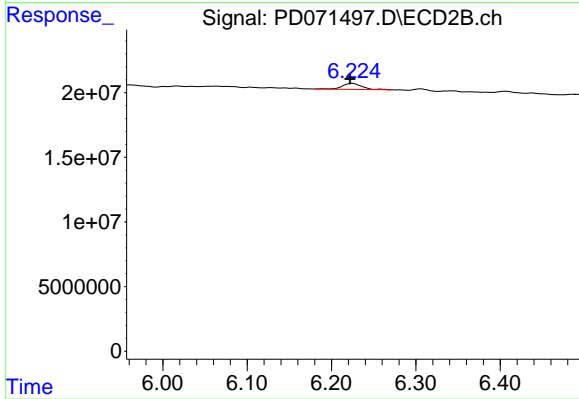
#11 cis-Chlordane

R.T.: 6.063 min
 Delta R.T.: 0.014 min
 Response: 1788945
 Conc: 0.10 ng/ml



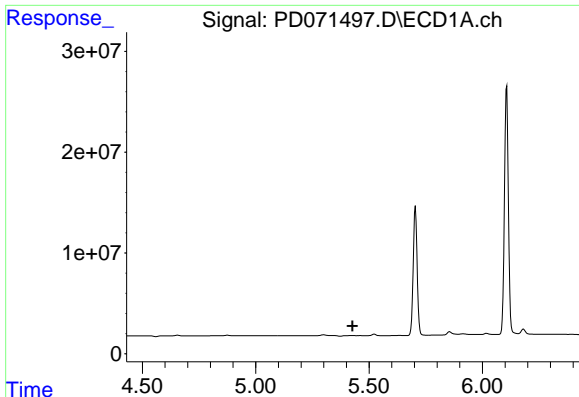
#12 4,4'-DDE

R.T.: 5.298 min
 Delta R.T.: 0.003 min
 Response: 2153372
 Conc: 0.61 ng/ml



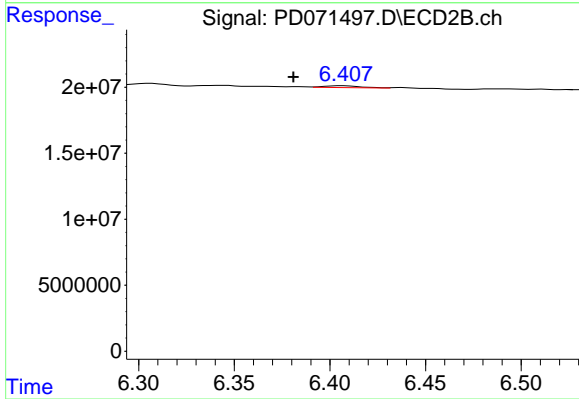
#12 4,4'-DDE

R.T.: 6.225 min
 Delta R.T.: 0.003 min
 Response: 7429241
 Conc: 0.47 ng/ml



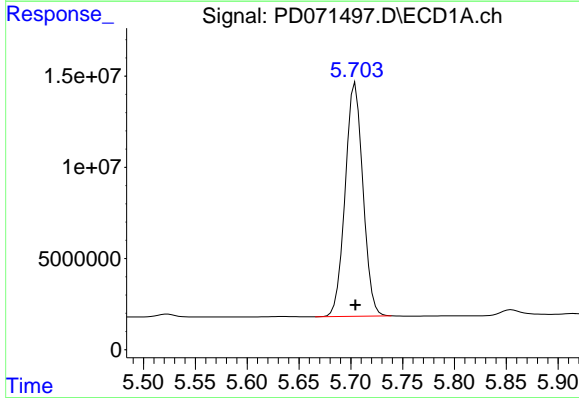
#13 Dieldrin

R.T.: 0.000 min
 Exp R.T. : 5.427 min
 Response: 0
 Conc: N.D.



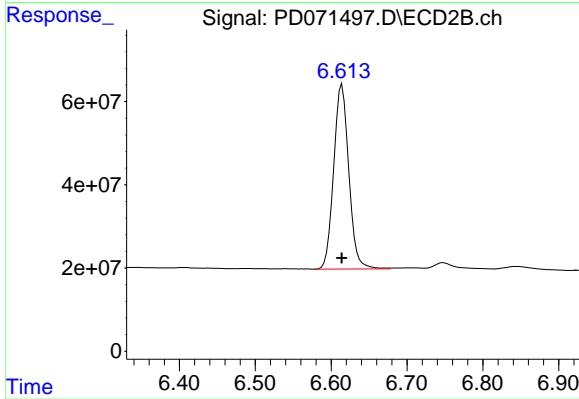
#13 Dieldrin

R.T.: 6.407 min
 Delta R.T.: 0.026 min
 Response: 1761289
 Conc: 0.11 ng/ml



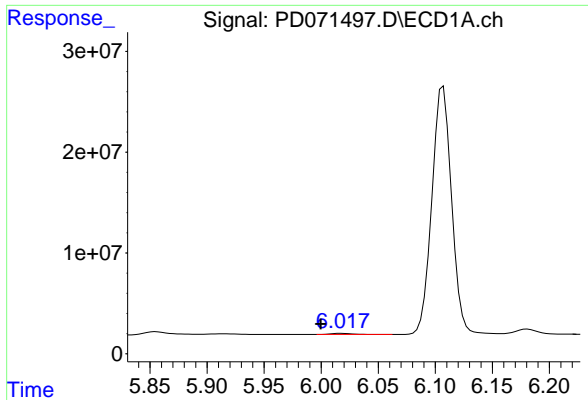
#14 Endrin

R.T.: 5.704 min
 Delta R.T.: 0.000 min
 Response: 152518539
 Conc: 46.51 ng/ml

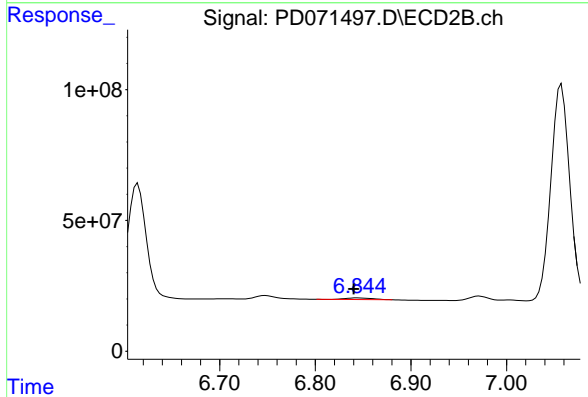


#14 Endrin

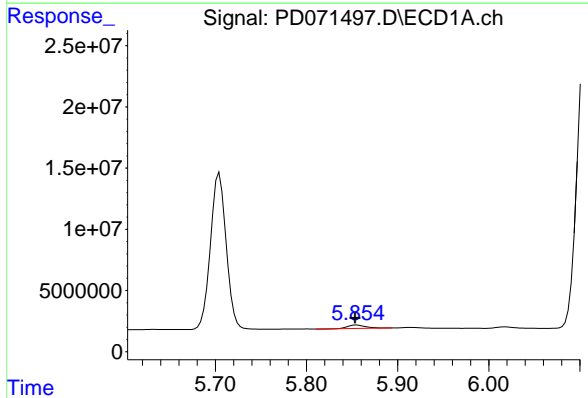
R.T.: 6.614 min
 Delta R.T.: 0.000 min
 Response: 615513047
 Conc: 48.50 ng/ml



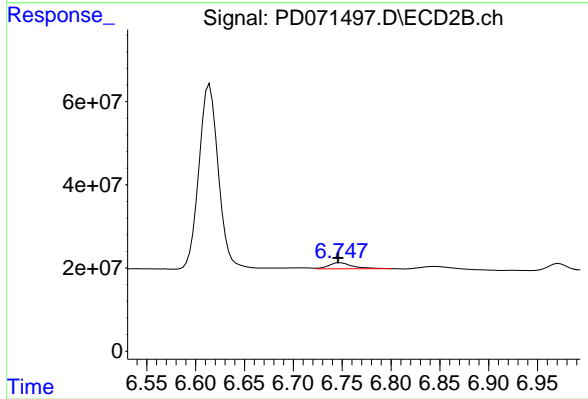
#15 Endosulfan II
 R.T.: 6.018 min
 Delta R.T.: 0.019 min
 Response: 1527450
 Conc: 0.49 ng/ml



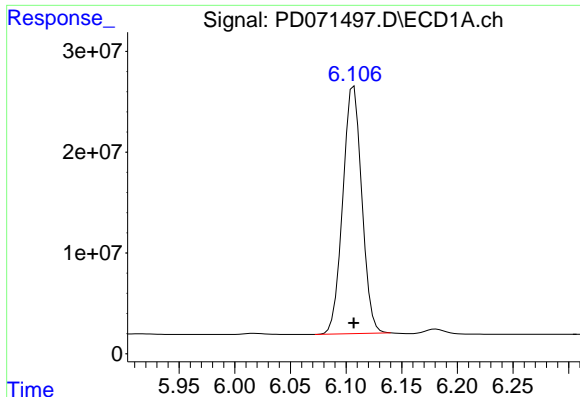
#15 Endosulfan II
 R.T.: 6.845 min
 Delta R.T.: 0.004 min
 Response: 11907422
 Conc: 0.91 ng/ml



#16 4,4'-DDD
 R.T.: 5.855 min
 Delta R.T.: 0.002 min
 Response: 3716456
 Conc: 1.37 ng/ml

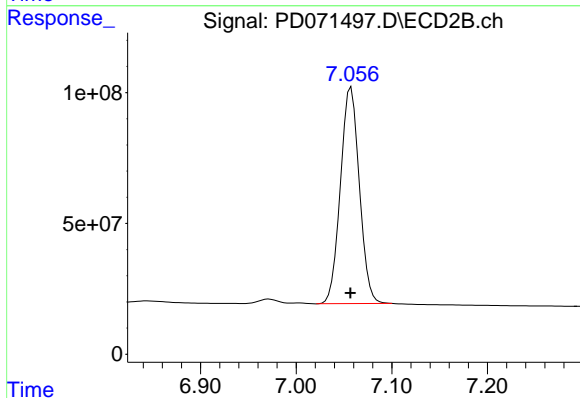


#16 4,4'-DDD
 R.T.: 6.748 min
 Delta R.T.: 0.002 min
 Response: 24277616
 Conc: 1.99 ng/ml



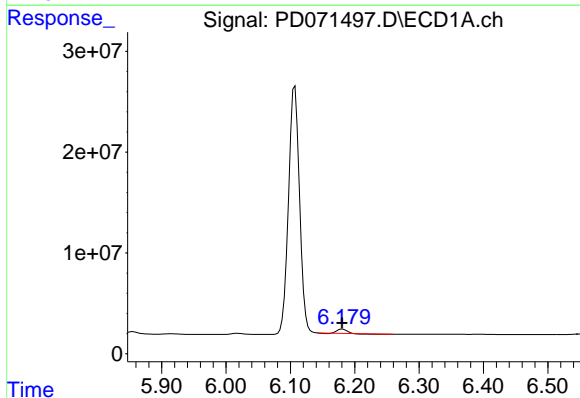
#17 4,4'-DDT

R.T.: 6.107 min
Delta R.T.: 0.000 min
Response: 292191320
Conc: 103.42 ng/ml



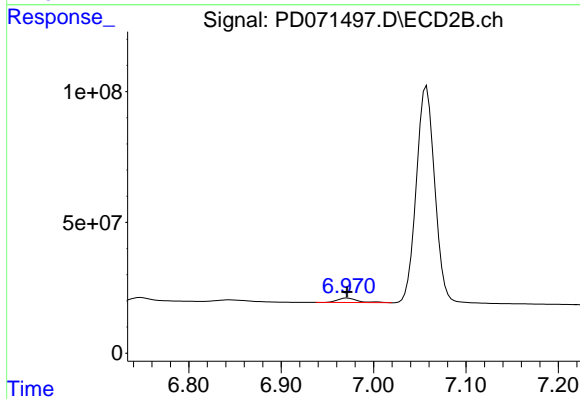
#17 4,4'-DDT

R.T.: 7.057 min
Delta R.T.: 0.000 min
Response: 1140224309
Conc: 96.38 ng/ml



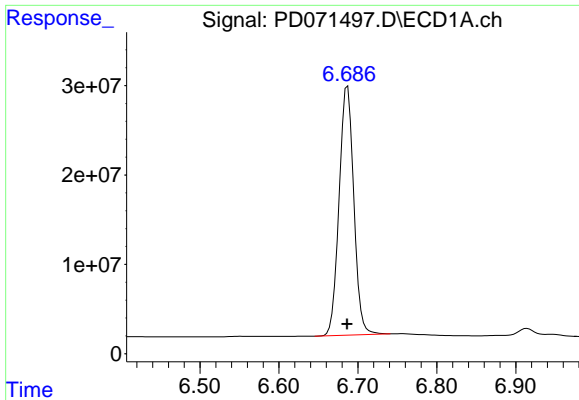
#18 Endrin aldehyde

R.T.: 6.181 min
Delta R.T.: 0.000 min
Response: 3798981
Conc: 1.42 ng/ml

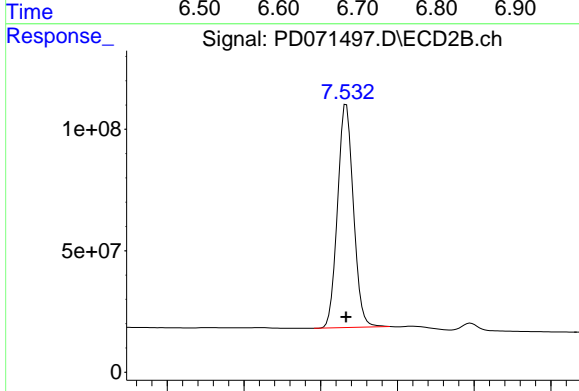


#18 Endrin aldehyde

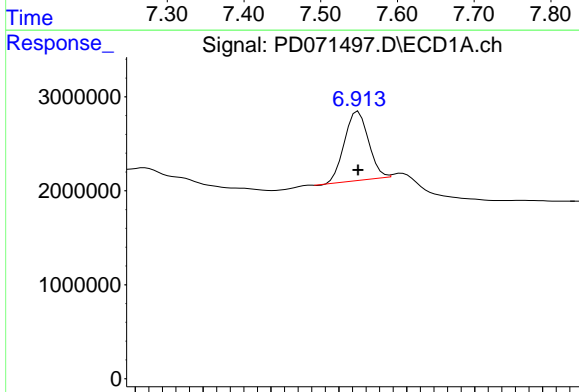
R.T.: 6.972 min
Delta R.T.: 0.000 min
Response: 26273463
Conc: 2.39 ng/ml



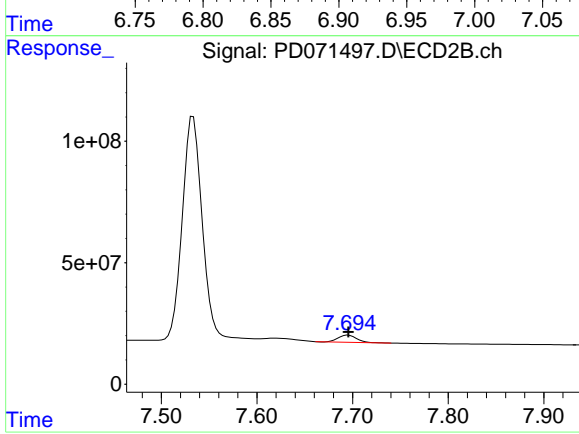
#20 Methoxychlor
R.T.: 6.687 min
Delta R.T.: 0.000 min
Response: 360124993
Conc: 249.44 ng/ml



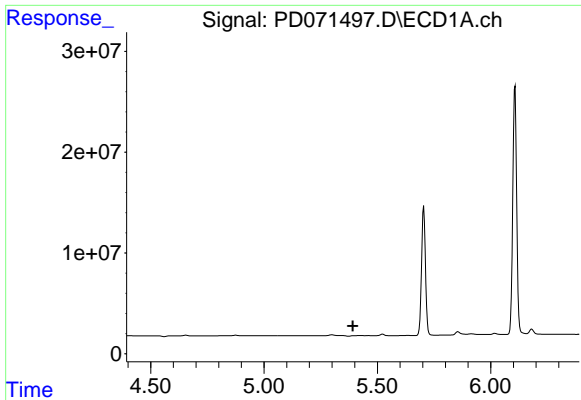
#20 Methoxychlor
R.T.: 7.533 min
Delta R.T.: 0.000 min
Response: 1323542629
Conc: 251.62 ng/ml



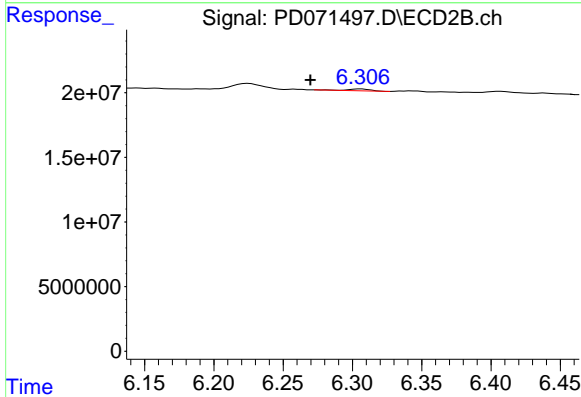
#21 Endrin ketone
R.T.: 6.914 min
Delta R.T.: 0.000 min
Response: 8990929
Conc: 2.63 ng/ml



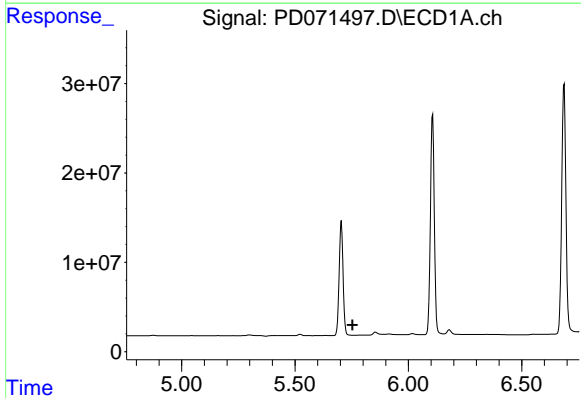
#21 Endrin ketone
R.T.: 7.695 min
Delta R.T.: 0.000 min
Response: 38134275
Conc: 2.91 ng/ml



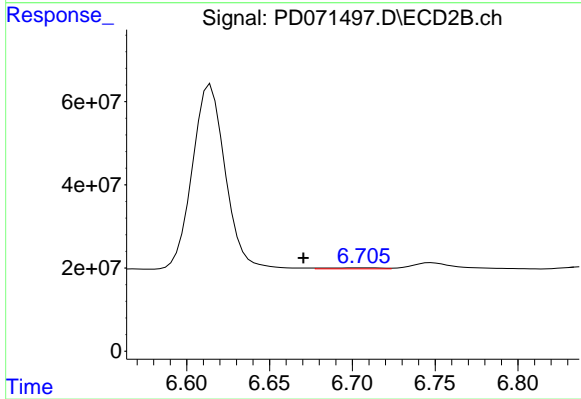
#22 Toxaphene-1
 R.T.: 0.000 min
 Exp R.T.: 5.392 min
 Response: 0
 Conc: N.D.



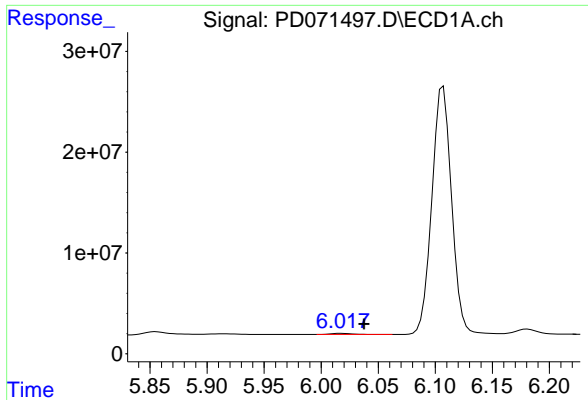
#22 Toxaphene-1
 R.T.: 6.306 min
 Delta R.T.: 0.036 min
 Response: 1643903
 Conc: 13.51 ng/ml



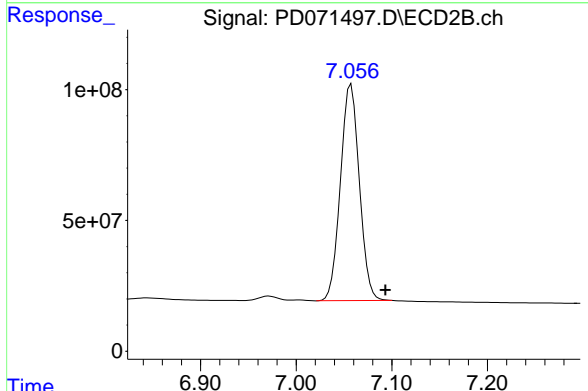
#23 Toxaphene-2
 R.T.: 5.802 min
 Delta R.T.: 0.048 min
 Response: -252329
 Conc: N.D.



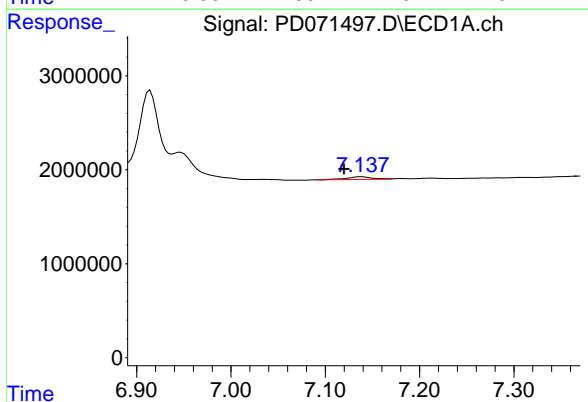
#23 Toxaphene-2
 R.T.: 6.709 min
 Delta R.T.: 0.038 min
 Response: 5846390
 Conc: 65.23 ng/ml



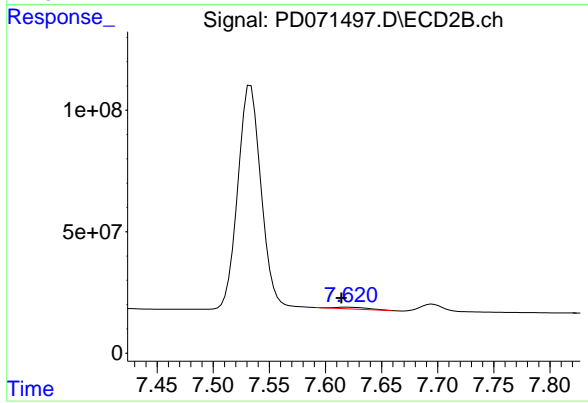
#24 Toxaphene-3
 R.T.: 6.018 min
 Delta R.T.: -0.019 min
 Response: 1527450
 Conc: 66.43 ng/ml



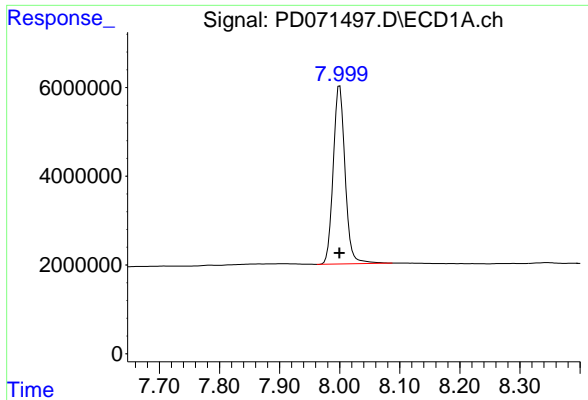
#24 Toxaphene-3
 R.T.: 7.057 min
 Delta R.T.: -0.036 min
 Response: 1140224309
 Conc: 3397.40 ng/ml



#26 Toxaphene-5
 R.T.: 7.138 min
 Delta R.T.: 0.018 min
 Response: 544022
 Conc: 12.82 ng/ml

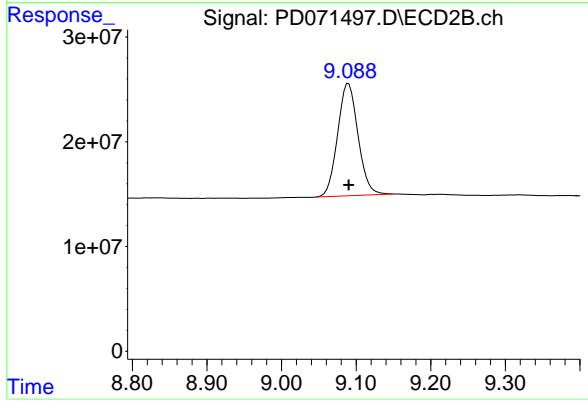


#26 Toxaphene-5
 R.T.: 7.619 min
 Delta R.T.: 0.005 min
 Response: 13118720
 Conc: 84.63 ng/ml



#27 Decachlorobiphenyl

R.T.: 8.000 min
Delta R.T.: 0.000 min
Response: 55150578
Conc: 19.64 ng/ml



#27 Decachlorobiphenyl

R.T.: 9.090 min
Delta R.T.: 0.000 min
Response: 203875462
Conc: 21.27 ng/ml