

Data Path : Z:\pestpcbsrv\HPCHEM1\ECD_D\Data\PD081220\
 Data File : PD058910.D
 Signal(s) : Signal #1: ECD1A.ch Signal #2: ECD2B.ch
 Acq On : 12 Aug 2020 12:40
 Operator : DD\AJ
 Sample : L3612-16
 Misc :
 ALS Vial : 6 Sample Multiplier: 1

Instrument :
 ECD_D
 ClientSampled :

Integration File signal 1: autoint1.e
 Integration File signal 2: autoint2.e
 Quant Time: Aug 13 04:01:57 2020
 Quant Method : Z:\pestpcbsrv\HPCHEM1\ECD_D\Method\PD080620CLP.M
 Quant Title : GC Extractables
 QLast Update : Thu Aug 06 11:29:05 2020
 Response via : Initial Calibration
 Integrator: ChemStation

Volume Inj. : 1 µl
 Signal #1 Phase : ZB-MR2 Signal #2 Phase: ZB-MR1
 Signal #1 Info : 30M x 0.32mm x0.2 Signal #2 Info : 30M x 0.32mm x 0.50µm

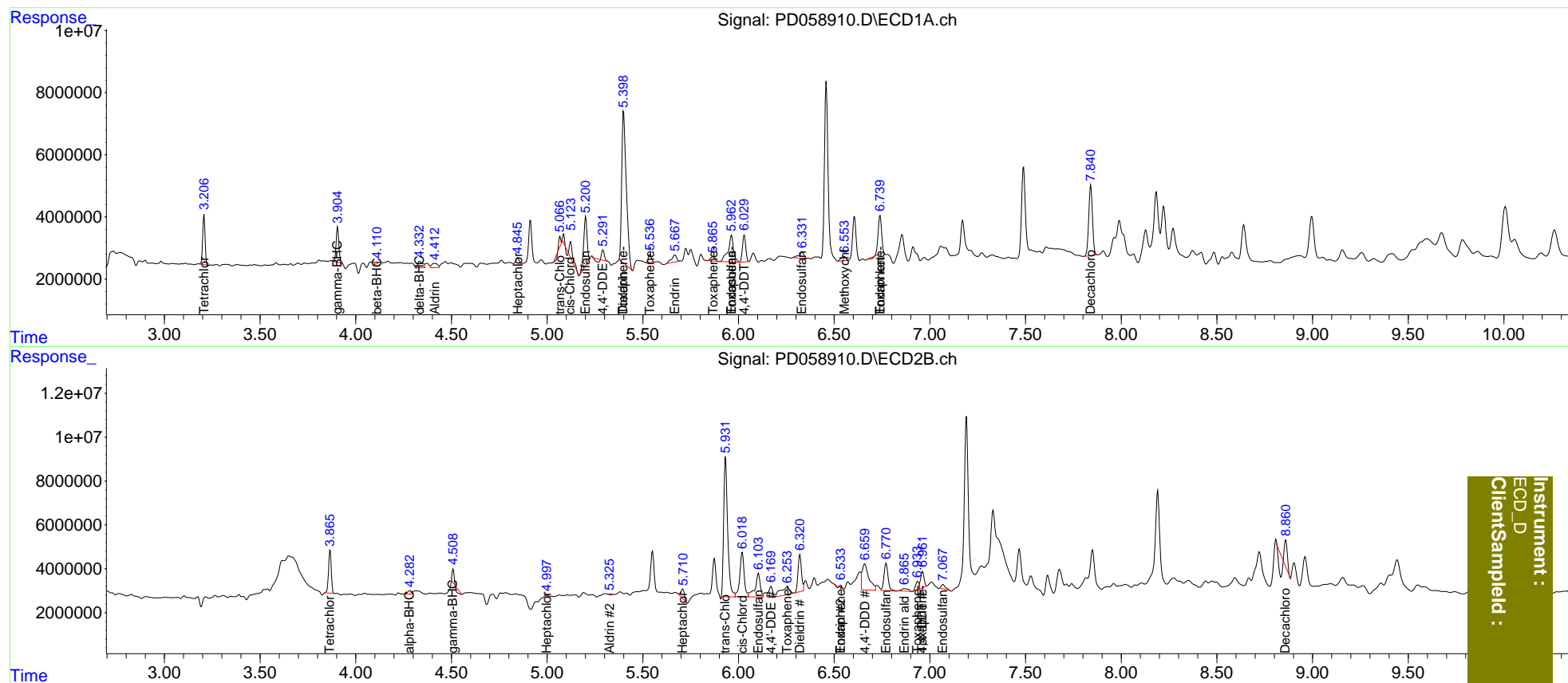
Compound	RT#1	RT#2	Resp#1	Resp#2	ng/ml	ng/ml
System Monitoring Compounds						
1) SA Tetrachlo...	3.208	3.866	13957721	19285011	14.433	13.316
27) SA Decachlor...	7.841	8.860	30847946	2961998	29.287	2.160 #
Target Compounds						
2) A alpha-BHC	0.000	4.284f	0	2309822	N.D.	1.113
3) MA gamma-BHC...	3.905	4.509	11468167	2245980	8.252	1.182 #
4) MA Heptachlor	0.000	4.999f	0	445560	N.D.	0.238
5) MB Aldrin	4.414	5.330	2924061	347189	2.356	0.188 #
8) B Heptachlo...	4.846	5.709	3528339	5766232	3.123	3.463
9) A Endosulfan I	5.202	6.104f	18781909	20378665	17.174	13.142
10) B trans-Chl...	5.068	5.933	720104	91982425	0.623	55.218 #
11) B cis-Chlor...	5.123	6.020	6655092	32435310	5.718	19.266 #
12) B 4,4'-DDE	5.292	6.170	2131408	6796476	1.852	4.289 #
13) MA Dieldrin	5.400	6.321	79704552	20857477	65.614	12.461 #
14) MA Endrin	5.669	6.534	4099292	489323	4.126	0.361 #
15) B Endosulfa...	5.964	6.772	17074142	18564827	16.756	13.193
16) A 4,4'-DDD	5.805	6.660	-1306382	29396329	N.D.	22.425
17) MA 4,4'-DDT	6.031	6.962	10280031	9312320	11.431	7.057 #
18) B Endrin al...	0.000	6.867	0	2766730	N.D.	2.249
19) B Endosulfa...	6.333	7.069	3478348	3087547	3.399	2.148 #
20) A Methoxychlor	6.554	0.000	2430602	0	5.385	N.D. #
21) B Endrin ke...	6.740f	7.529	15067711	-3084519	13.465	N.D. #
22) Toxaphene-1	5.400	6.256	79704552	11800127	12528.308	1391.577 #
23) Toxaphene-2	5.538	6.534	3019908	489323	417.369	46.446 #
24) Toxaphene-3	5.867	6.936	2369623	4134667	430.827	311.040 #
25) Toxaphene-4	5.964	6.962	17074142	9312320	917.724	242.590 #
26) Toxaphene-5	6.740	7.529	15067711	-3084519	639.168	N.D. #

(f)=RT Delta > 1/2 Window (#)=Amounts differ by > 25% (m)=manual int.

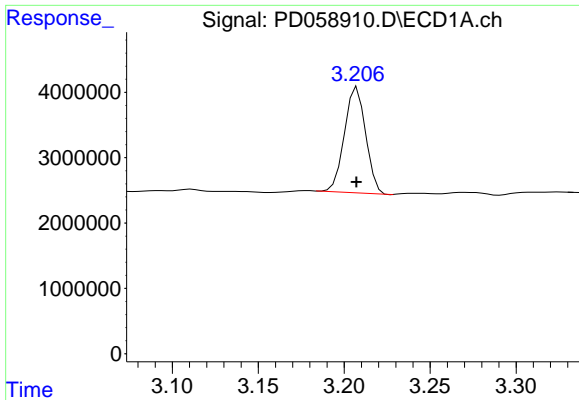
Data Path : Z:\pestpcbsrv\HPCHEM1\ECD_D\Data\PD081220\
 Data File : PD058910.D
 Signal(s) : Signal #1: ECD1A.ch Signal #2: ECD2B.ch
 Acq On : 12 Aug 2020 12:40
 Operator : DD\AJ
 Sample : L3612-16
 Misc :
 ALS Vial : 6 Sample Multiplier: 1

Integration File signal 1: autoint1.e
 Integration File signal 2: autoint2.e
 Quant Time: Aug 13 04:01:57 2020
 Quant Method : Z:\pestpcbsrv\HPCHEM1\ECD_D\Method\PD080620CLP.M
 Quant Title : GC Extractables
 QLast Update : Thu Aug 06 11:29:05 2020
 Response via : Initial Calibration
 Integrator: ChemStation

Volume Inj. : 1 µl
 Signal #1 Phase : ZB-MR2 Signal #2 Phase: ZB-MR1
 Signal #1 Info : 30M x 0.32mm x0.2 Signal #2 Info : 30M x 0.32mm x 0.50µm

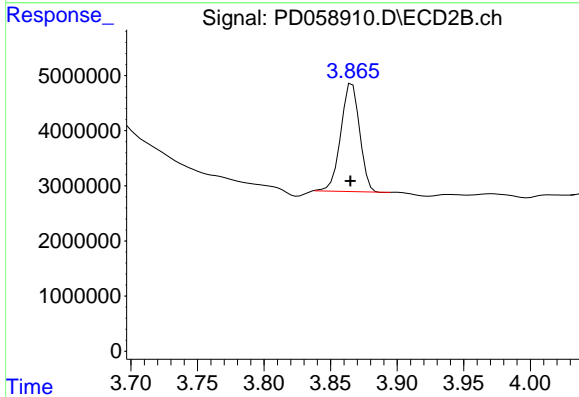


Instrument :
 ECD_D
 ClientSampleId :

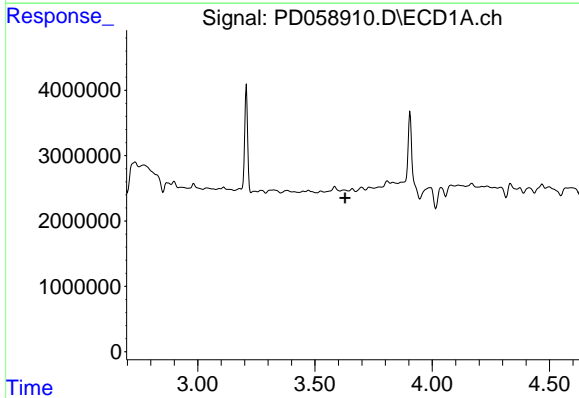


#1 Tetrachloro-m-xylene
 R.T.: 3.208 min
 Delta R.T.: 0.000 min
 Response: 13957721
 Conc: 14.43 ng/ml

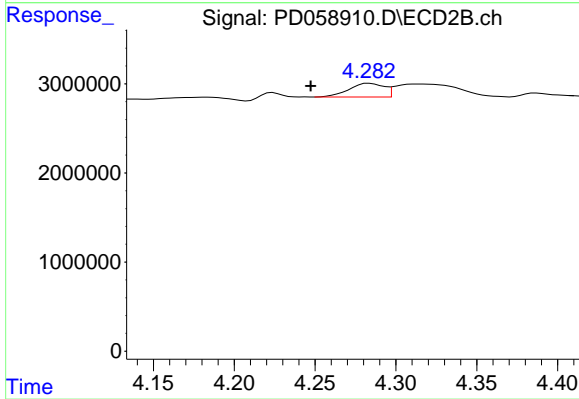
Instrument :
 ECD_D
 ClientSampled :



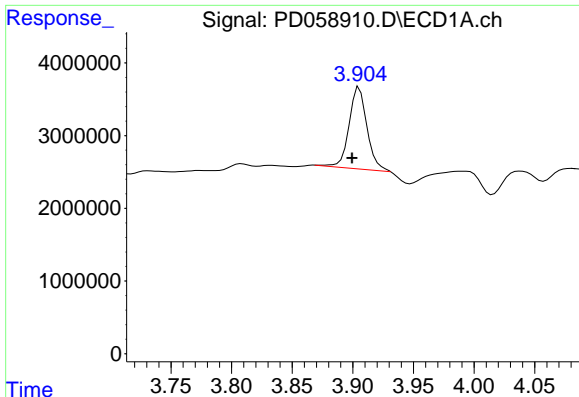
#1 Tetrachloro-m-xylene
 R.T.: 3.866 min
 Delta R.T.: 0.001 min
 Response: 19285011
 Conc: 13.32 ng/ml



#2 alpha-BHC
 R.T.: 0.000 min
 Exp R.T. : 3.628 min
 Response: 0
 Conc: N.D.



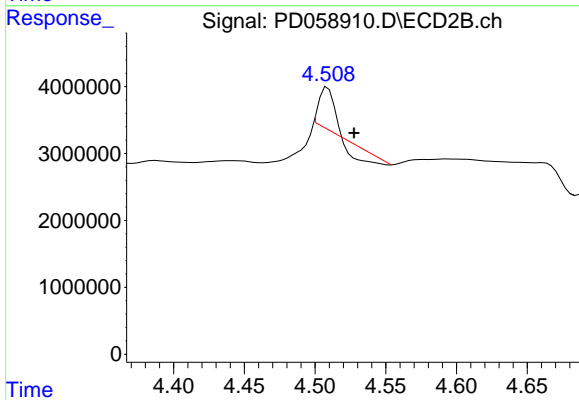
#2 alpha-BHC
 R.T.: 4.284 min
 Delta R.T.: 0.036 min
 Response: 2309822
 Conc: 1.11 ng/ml



#3 gamma-BHC (Lindane)

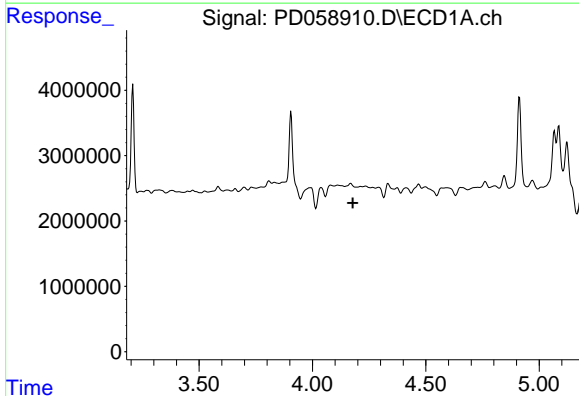
R.T.: 3.905 min
 Delta R.T.: 0.006 min
 Response: 11468167
 Conc: 8.25 ng/ml

Instrument :
 ECD_D
 ClientSampleId :



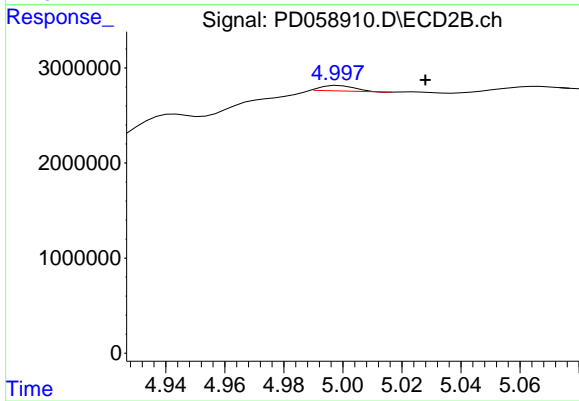
#3 gamma-BHC (Lindane)

R.T.: 4.509 min
 Delta R.T.: -0.019 min
 Response: 2245980
 Conc: 1.18 ng/ml



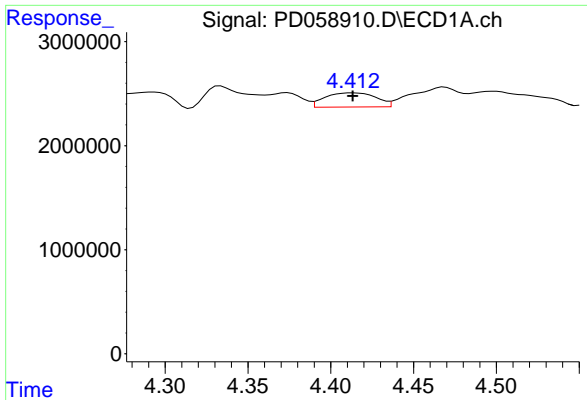
#4 Heptachlor

R.T.: 0.000 min
 Exp R.T. : 4.178 min
 Response: 0
 Conc: N.D.



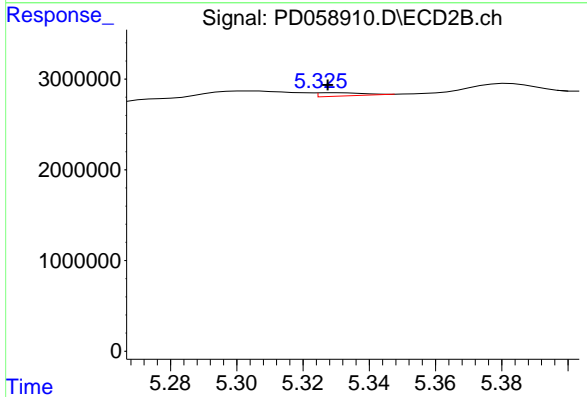
#4 Heptachlor

R.T.: 4.999 min
 Delta R.T.: -0.029 min
 Response: 445560
 Conc: 0.24 ng/ml

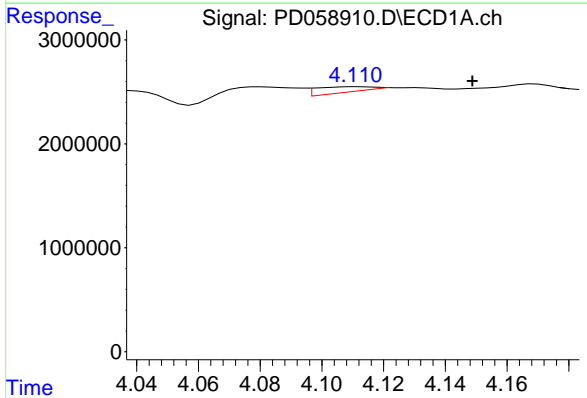


#5 Aldrin
 R.T.: 4.414 min
 Delta R.T.: 0.000 min
 Response: 2924061
 Conc: 2.36 ng/ml

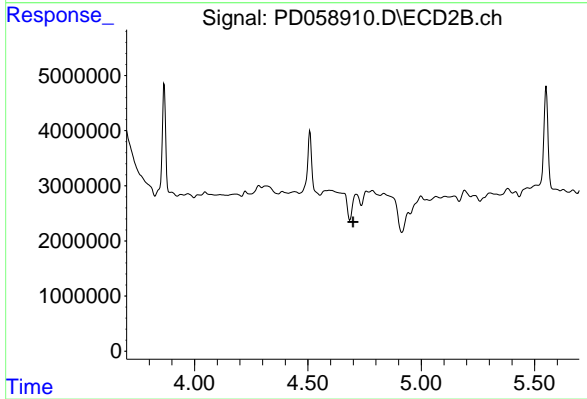
Instrument :
 ECD_D
 ClientSampleId :



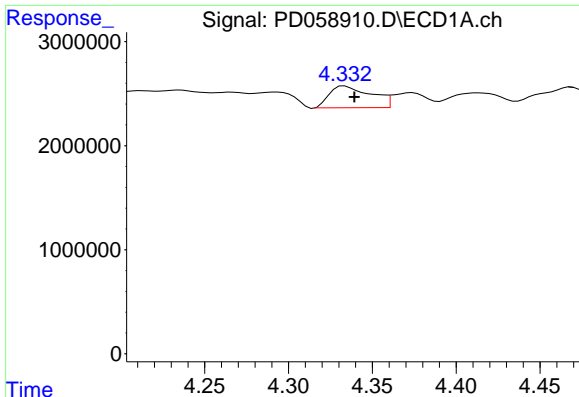
#5 Aldrin
 R.T.: 5.330 min
 Delta R.T.: 0.002 min
 Response: 347189
 Conc: 0.19 ng/ml



#6 beta-BHC
 R.T.: 4.112 min
 Delta R.T.: -0.037 min
 Response: 696208
 Conc: 1.18 ng/ml



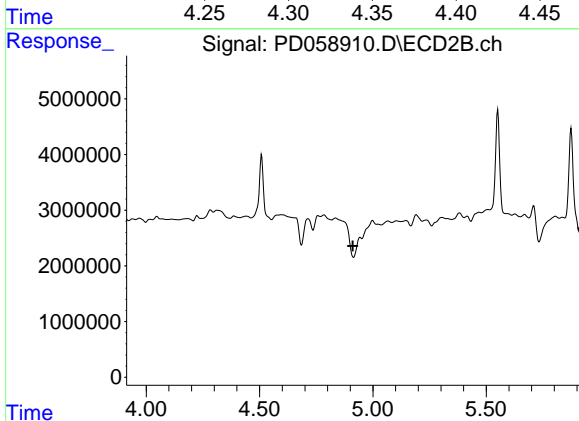
#6 beta-BHC
 R.T.: 4.714 min
 Delta R.T.: 0.014 min
 Response: -1779811
 Conc: N.D.



#7 delta-BHC

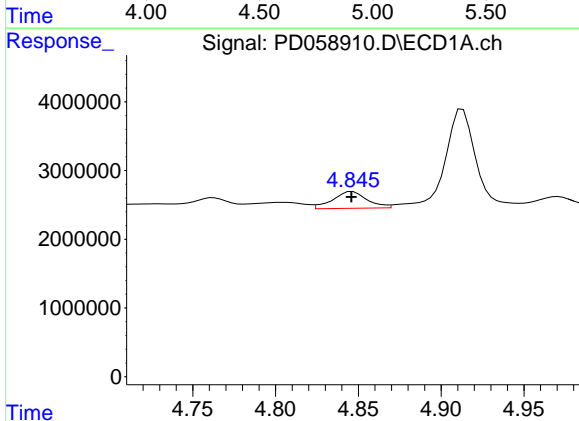
R.T.: 4.334 min
 Delta R.T.: -0.006 min
 Response: 3605592
 Conc: 2.69 ng/ml

Instrument :
 ECD_D
 ClientSampleId :



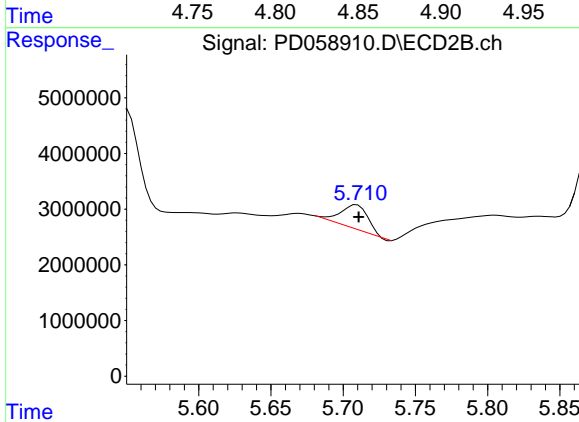
#7 delta-BHC

R.T.: 4.944 min
 Delta R.T.: 0.033 min
 Response: -5970265
 Conc: N.D.



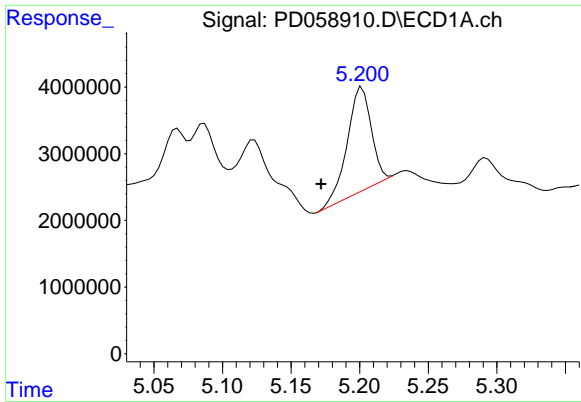
#8 Heptachlor epoxide

R.T.: 4.846 min
 Delta R.T.: 0.000 min
 Response: 3528339
 Conc: 3.12 ng/ml



#8 Heptachlor epoxide

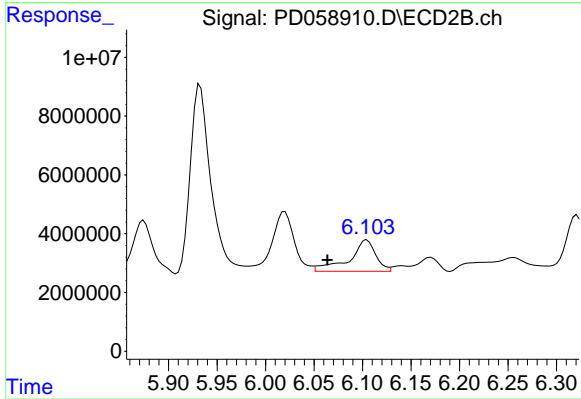
R.T.: 5.709 min
 Delta R.T.: -0.001 min
 Response: 5766232
 Conc: 3.46 ng/ml



#9 Endosulfan I

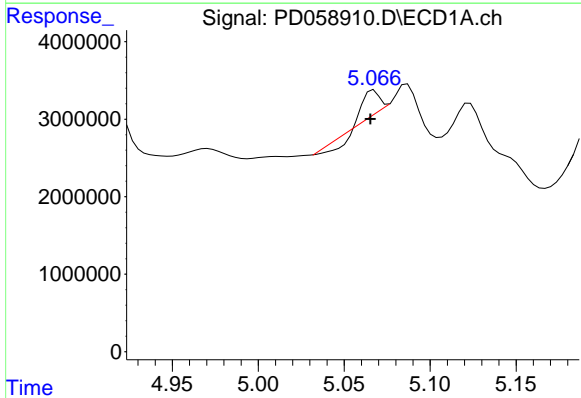
R.T.: 5.202 min
 Delta R.T.: 0.030 min
 Response: 18781909
 Conc: 17.17 ng/ml

Instrument :
 ECD_D
 ClientSampled :



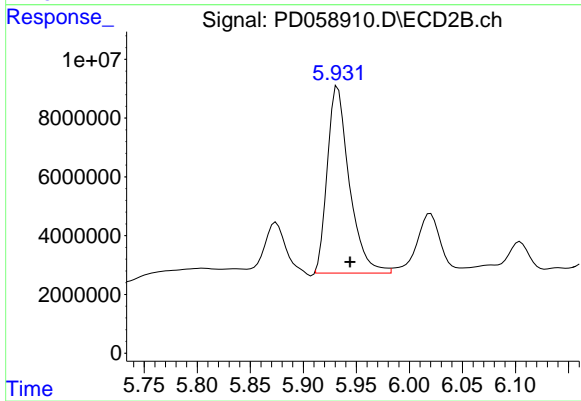
#9 Endosulfan I

R.T.: 6.104 min
 Delta R.T.: 0.041 min
 Response: 20378665
 Conc: 13.14 ng/ml



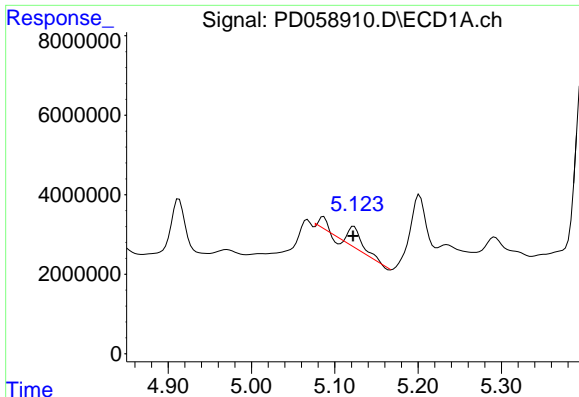
#10 trans-Chlordane

R.T.: 5.068 min
 Delta R.T.: 0.002 min
 Response: 720104
 Conc: 0.62 ng/ml



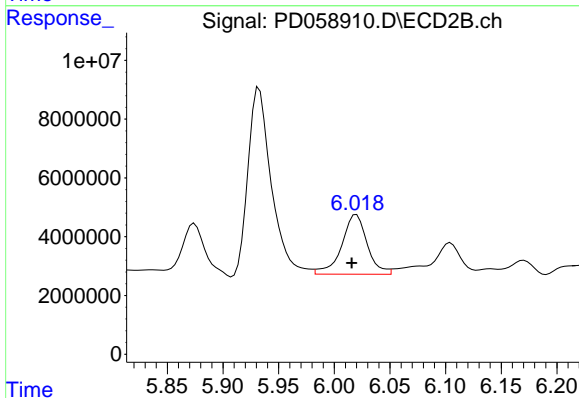
#10 trans-Chlordane

R.T.: 5.933 min
 Delta R.T.: -0.011 min
 Response: 91982425
 Conc: 55.22 ng/ml

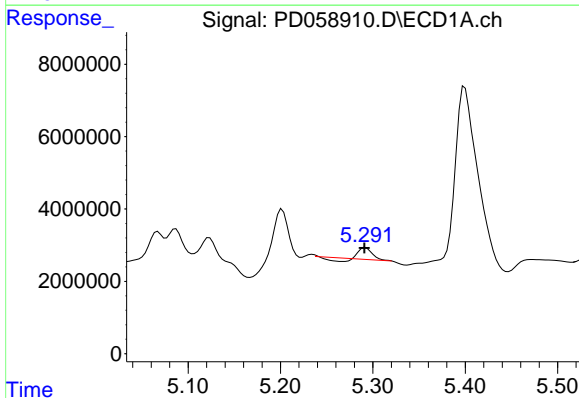


#11 cis-Chlordane
 R.T.: 5.123 min
 Delta R.T.: 0.000 min
 Response: 6655092
 Conc: 5.72 ng/ml

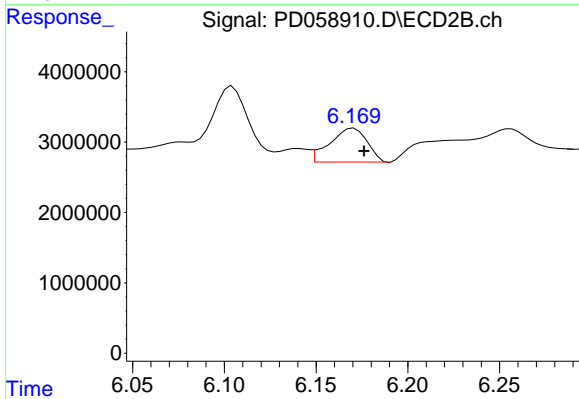
Instrument :
 ECD_D
 ClientSampled :



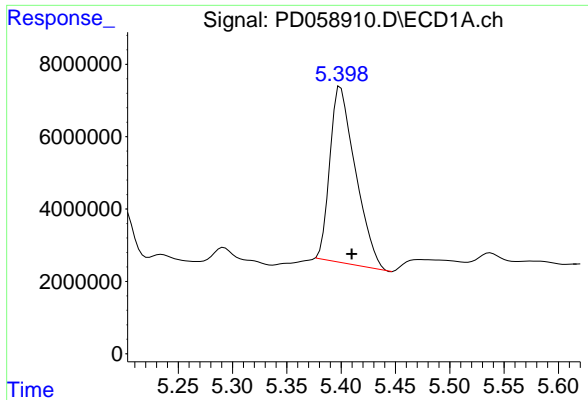
#11 cis-Chlordane
 R.T.: 6.020 min
 Delta R.T.: 0.004 min
 Response: 32435310
 Conc: 19.27 ng/ml



#12 4,4'-DDE
 R.T.: 5.292 min
 Delta R.T.: 0.000 min
 Response: 2131408
 Conc: 1.85 ng/ml

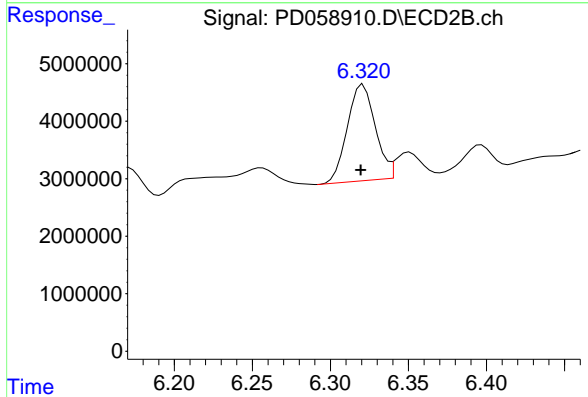


#12 4,4'-DDE
 R.T.: 6.170 min
 Delta R.T.: -0.006 min
 Response: 6796476
 Conc: 4.29 ng/ml

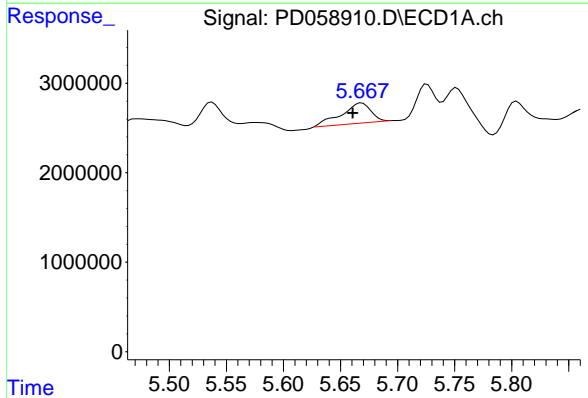


#13 Dieldrin
 R.T.: 5.400 min
 Delta R.T.: -0.010 min
 Response: 79704552
 Conc: 65.61 ng/ml

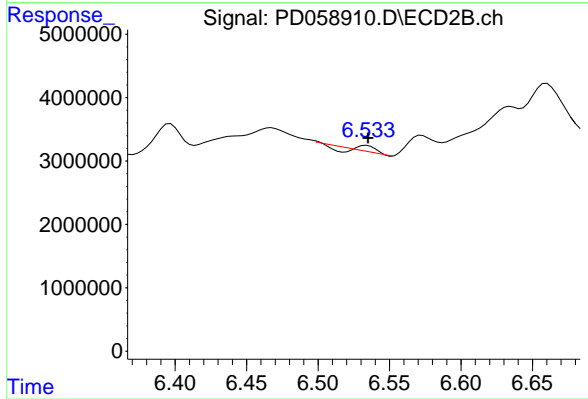
Instrument :
 ECD_D
 ClientSampleId :



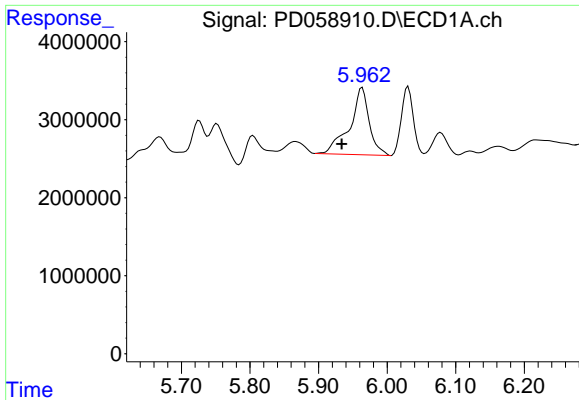
#13 Dieldrin
 R.T.: 6.321 min
 Delta R.T.: 0.002 min
 Response: 20857477
 Conc: 12.46 ng/ml



#14 Endrin
 R.T.: 5.669 min
 Delta R.T.: 0.008 min
 Response: 4099292
 Conc: 4.13 ng/ml

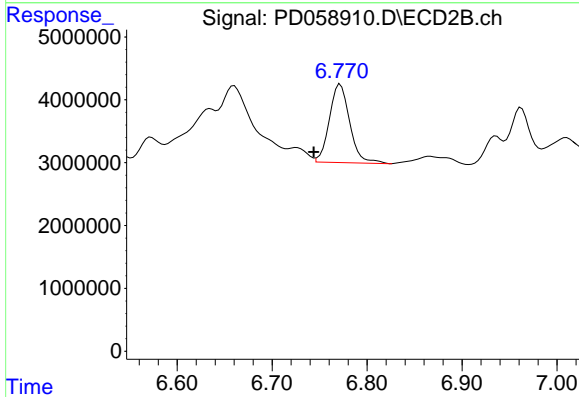


#14 Endrin
 R.T.: 6.534 min
 Delta R.T.: 0.000 min
 Response: 489323
 Conc: 0.36 ng/ml

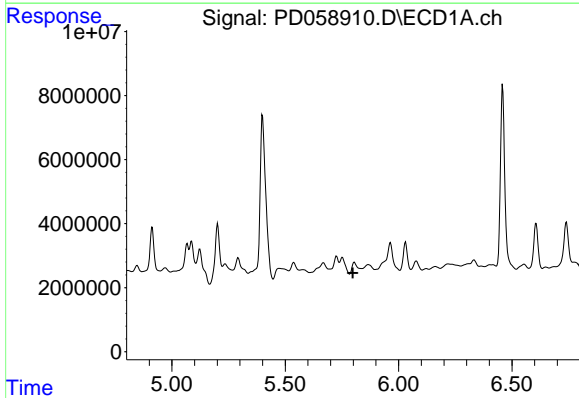


#15 Endosulfan II
 R.T.: 5.964 min
 Delta R.T.: 0.030 min
 Response: 17074142
 Conc: 16.76 ng/ml

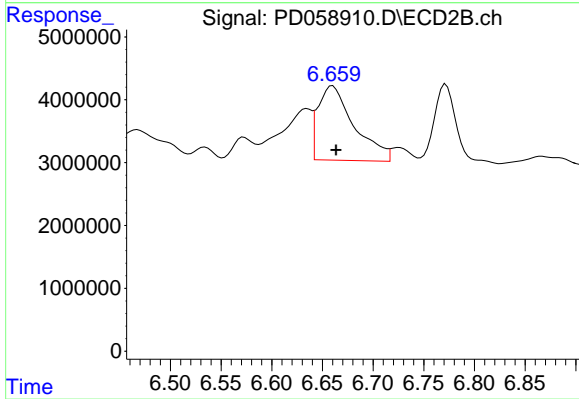
Instrument :
 ECD_D
 ClientSampled :



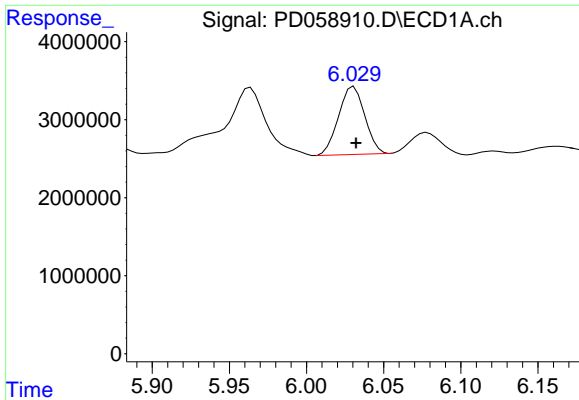
#15 Endosulfan II
 R.T.: 6.772 min
 Delta R.T.: 0.028 min
 Response: 18564827
 Conc: 13.19 ng/ml



#16 4,4'-DDD
 R.T.: 5.805 min
 Delta R.T.: 0.007 min
 Response: -1306382
 Conc: N.D.

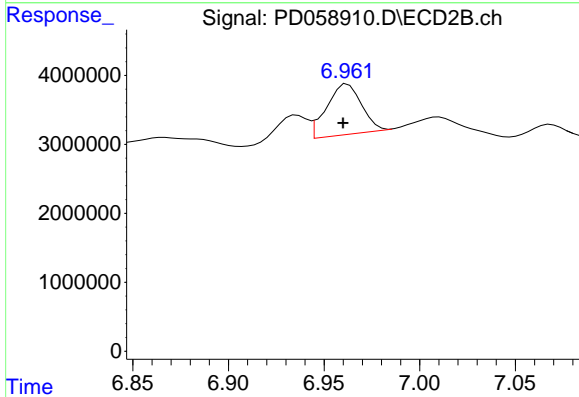


#16 4,4'-DDD
 R.T.: 6.660 min
 Delta R.T.: -0.003 min
 Response: 29396329
 Conc: 22.43 ng/ml

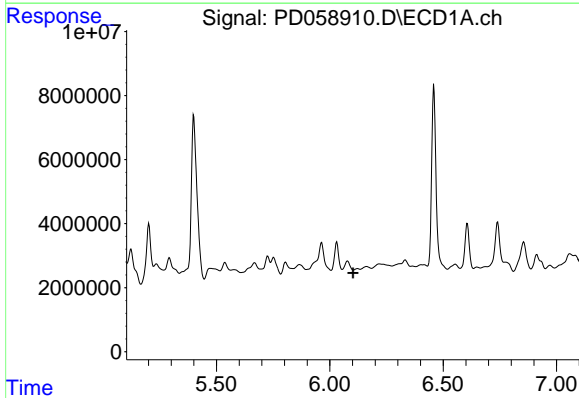


#17 4,4'-DDT
 R.T.: 6.031 min
 Delta R.T.: -0.001 min
 Response: 10280031
 Conc: 11.43 ng/ml

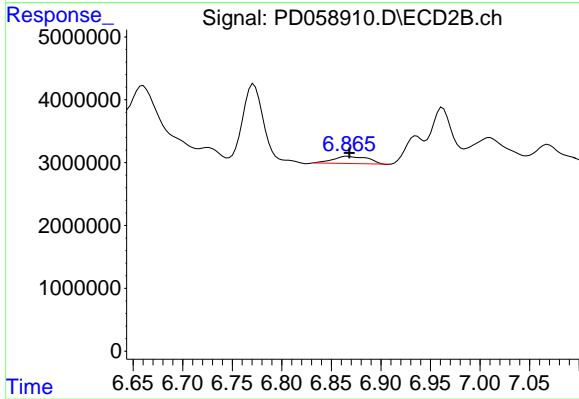
Instrument :
 ECD_D
 ClientSampled :



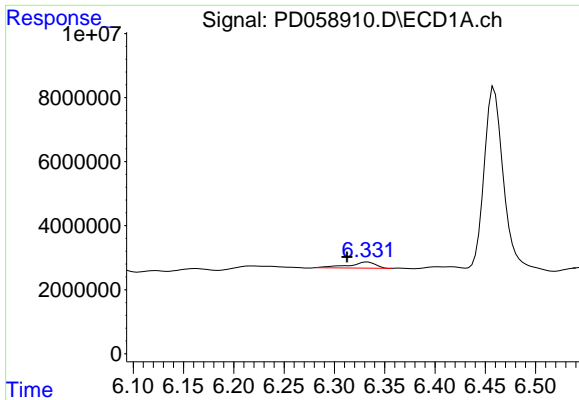
#17 4,4'-DDT
 R.T.: 6.962 min
 Delta R.T.: 0.002 min
 Response: 9312320
 Conc: 7.06 ng/ml



#18 Endrin aldehyde
 R.T.: 0.000 min
 Exp R.T. : 6.103 min
 Response: 0
 Conc: N.D.

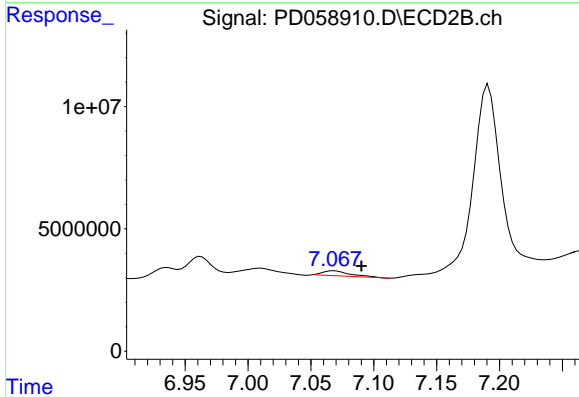


#18 Endrin aldehyde
 R.T.: 6.867 min
 Delta R.T.: -0.002 min
 Response: 2766730
 Conc: 2.25 ng/ml

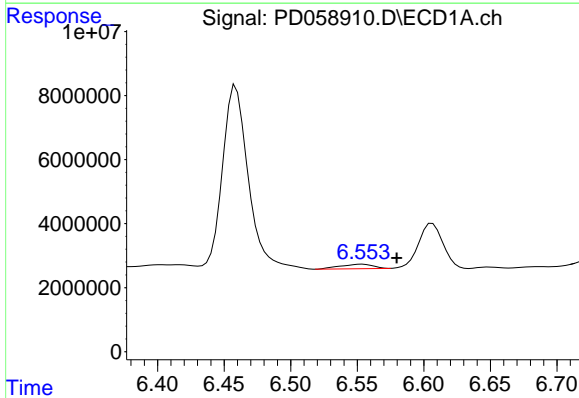


#19 Endosulfan Sulfate
 R.T.: 6.333 min
 Delta R.T.: 0.020 min
 Response: 3478348
 Conc: 3.40 ng/ml

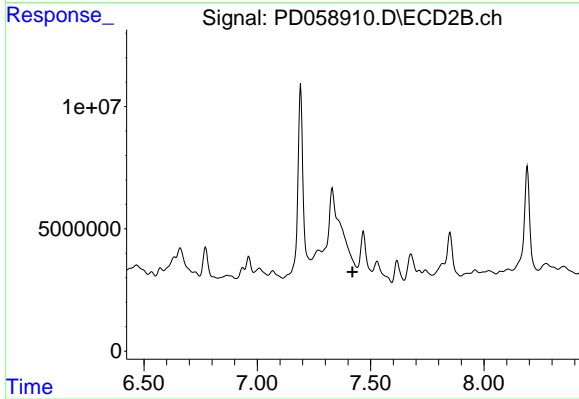
Instrument :
 ECD_D
 ClientSampled :



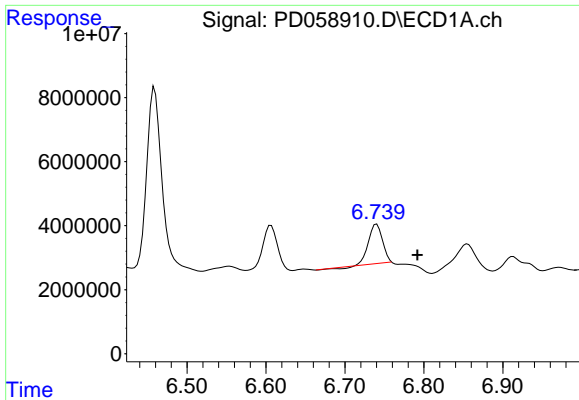
#19 Endosulfan Sulfate
 R.T.: 7.069 min
 Delta R.T.: -0.022 min
 Response: 3087547
 Conc: 2.15 ng/ml



#20 Methoxychlor
 R.T.: 6.554 min
 Delta R.T.: -0.026 min
 Response: 2430602
 Conc: 5.39 ng/ml

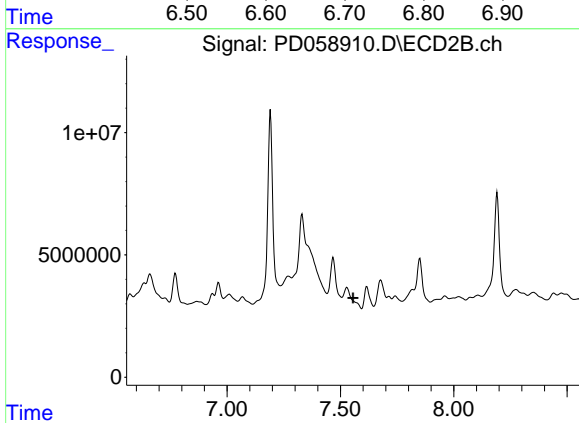


#20 Methoxychlor
 R.T.: 0.000 min
 Exp R.T.: 7.420 min
 Response: 0
 Conc: N.D.

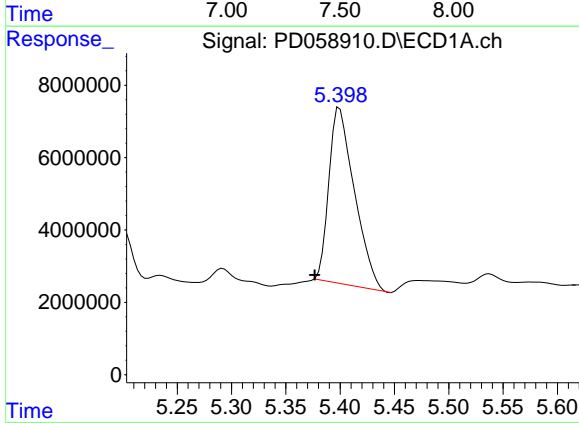


#21 Endrin ketone
 R.T.: 6.740 min
 Delta R.T.: -0.052 min
 Response: 15067711
 Conc: 13.47 ng/ml

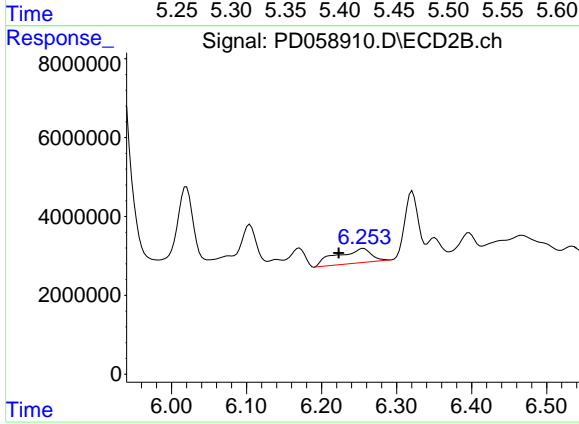
Instrument :
 ECD_D
 ClientSampled :



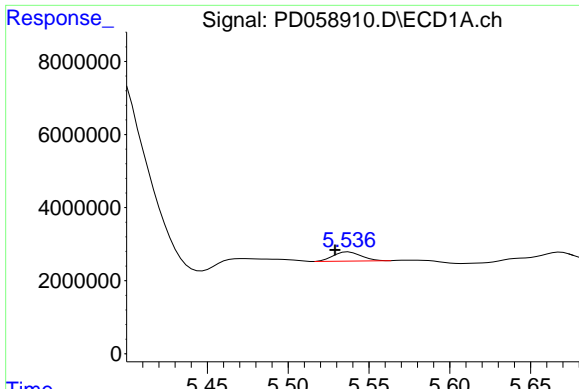
#21 Endrin ketone
 R.T.: 7.529 min
 Delta R.T.: -0.027 min
 Response: -3084519
 Conc: N.D.



#22 Toxaphene-1
 R.T.: 5.400 min
 Delta R.T.: 0.023 min
 Response: 79704552
 Conc: 12528.31 ng/ml

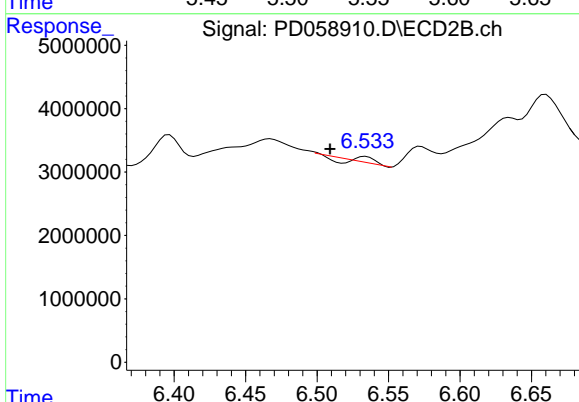


#22 Toxaphene-1
 R.T.: 6.256 min
 Delta R.T.: 0.033 min
 Response: 11800127
 Conc: 1391.58 ng/ml

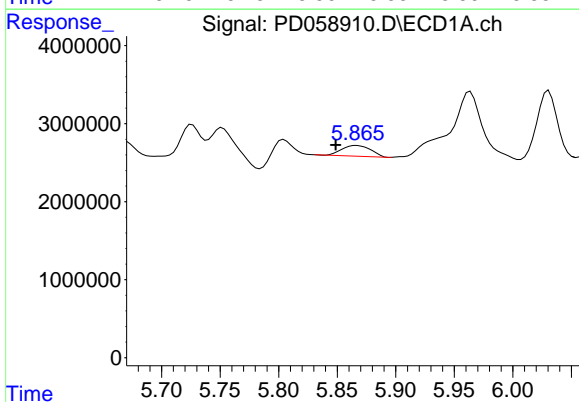


#23 Toxaphene-2
 R.T.: 5.538 min
 Delta R.T.: 0.009 min
 Response: 3019908
 Conc: 417.37 ng/ml

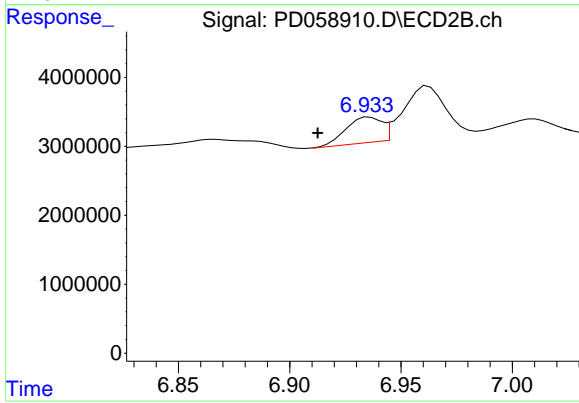
Instrument :
 ECD_D
 ClientSampleId :



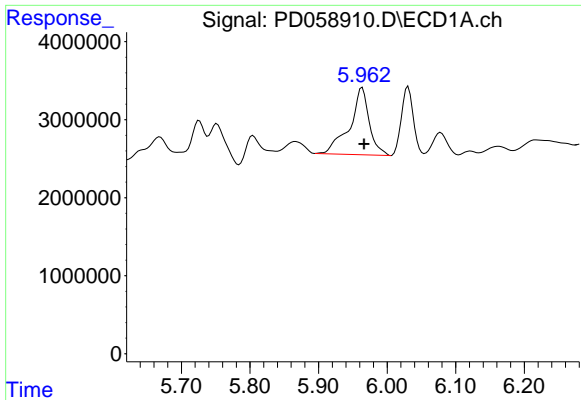
#23 Toxaphene-2
 R.T.: 6.534 min
 Delta R.T.: 0.025 min
 Response: 489323
 Conc: 46.45 ng/ml



#24 Toxaphene-3
 R.T.: 5.867 min
 Delta R.T.: 0.018 min
 Response: 2369623
 Conc: 430.83 ng/ml

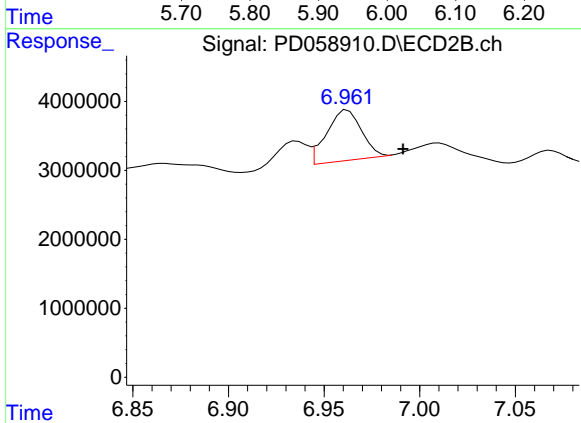


#24 Toxaphene-3
 R.T.: 6.936 min
 Delta R.T.: 0.023 min
 Response: 4134667
 Conc: 311.04 ng/ml

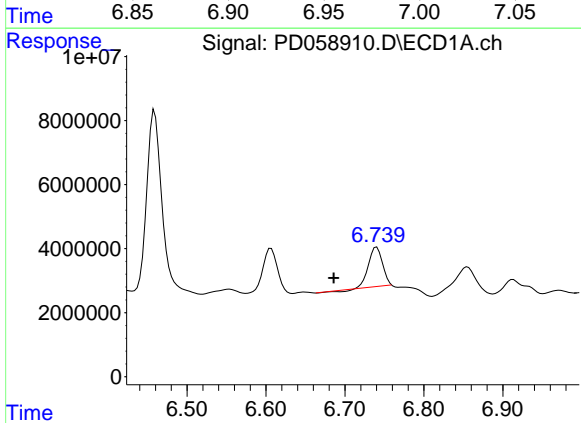


#25 Toxaphene-4
 R.T.: 5.964 min
 Delta R.T.: -0.003 min
 Response: 17074142
 Conc: 917.72 ng/ml

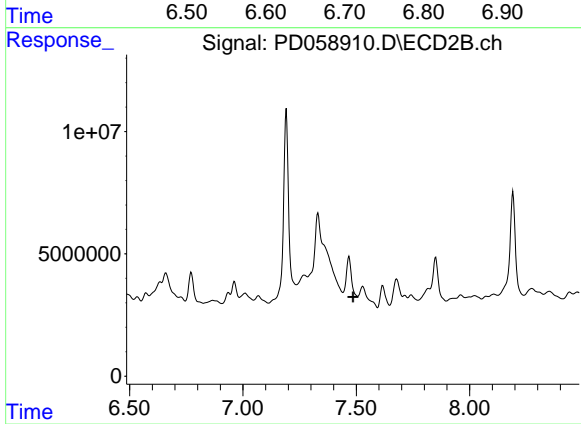
Instrument :
 ECD_D
 ClientSampleId :



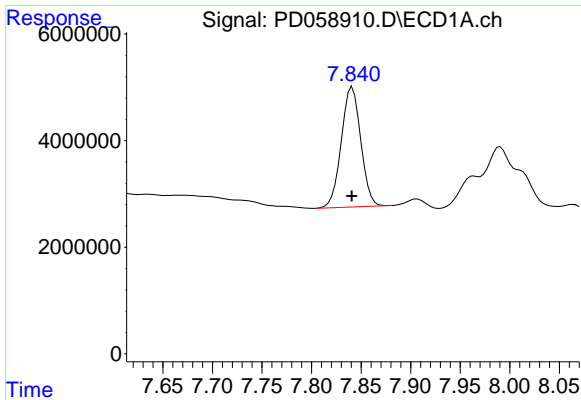
#25 Toxaphene-4
 R.T.: 6.962 min
 Delta R.T.: -0.029 min
 Response: 9312320
 Conc: 242.59 ng/ml



#26 Toxaphene-5
 R.T.: 6.740 min
 Delta R.T.: 0.054 min
 Response: 15067711
 Conc: 639.17 ng/ml



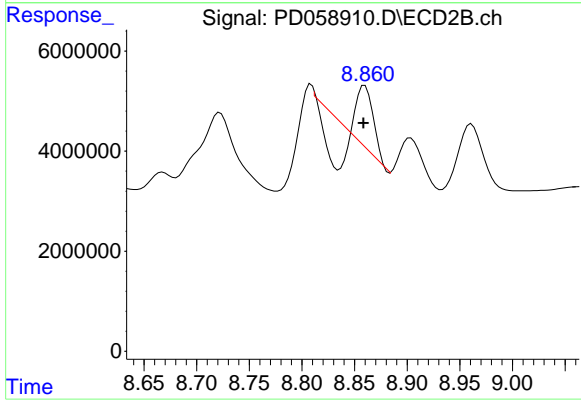
#26 Toxaphene-5
 R.T.: 7.529 min
 Delta R.T.: 0.042 min
 Response: -3084519
 Conc: N.D.



#27 Decachlorobiphenyl

R.T.: 7.841 min
Delta R.T.: 0.000 min
Response: 30847946
Conc: 29.29 ng/ml

Instrument :
ECD_D
ClientSampleId :



#27 Decachlorobiphenyl

R.T.: 8.860 min
Delta R.T.: 0.001 min
Response: 2961998
Conc: 2.16 ng/ml