

Data Path : Z:\pestpcbsrv\HPCHEM1\ECD\_D\Data\PD081220\  
 Data File : PD058916.D  
 Signal(s) : Signal #1: ECD1A.ch Signal #2: ECD2B.ch  
 Acq On : 12 Aug 2020 14:30  
 Operator : DD\AJ  
 Sample : L3612-13  
 Misc :  
 ALS Vial : 12 Sample Multiplier: 1

Instrument :  
 ECD\_D  
 ClientSampled :

Integration File signal 1: autoint1.e  
 Integration File signal 2: autoint2.e  
 Quant Time: Aug 13 04:03:19 2020  
 Quant Method : Z:\pestpcbsrv\HPCHEM1\ECD\_D\Method\PD080620CLP.M  
 Quant Title : GC Extractables  
 QLast Update : Thu Aug 06 11:29:05 2020  
 Response via : Initial Calibration  
 Integrator: ChemStation

Volume Inj. : 1 µl  
 Signal #1 Phase : ZB-MR2 Signal #2 Phase: ZB-MR1  
 Signal #1 Info : 30M x 0.32mm x0.2 Signal #2 Info : 30M x 0.32mm x 0.50µm

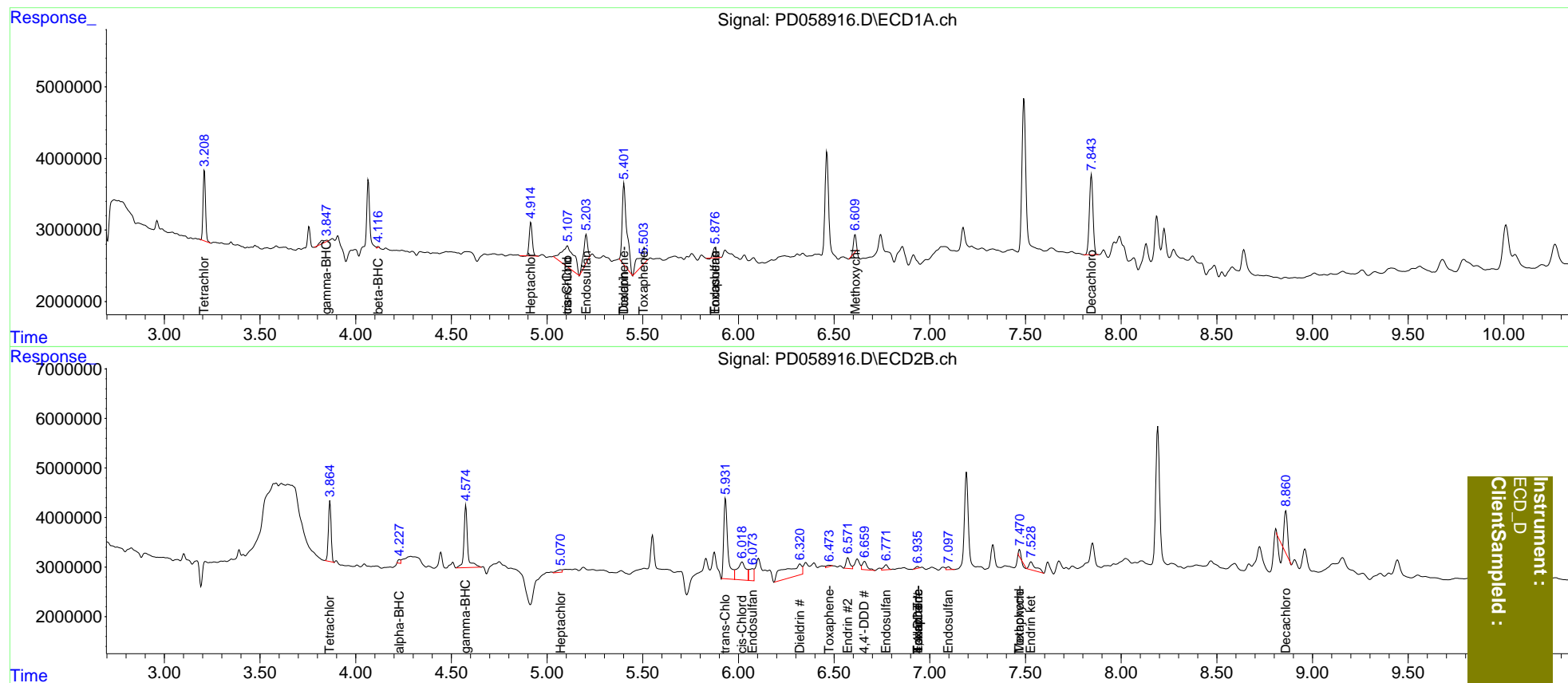
Compound	RT#1	RT#2	Resp#1	Resp#2	ng/ml	ng/ml
-----						
System Monitoring Compounds						
1) SA Tetrachlo...	3.210	3.866	8750400	11964757	9.048	8.262
2) SA Decachlor...	7.845	8.861	14669684	6635875	13.927	4.839 #
Target Compounds						
2) A alpha-BHC	0.000	4.228	0	663423	N.D.	0.320
3) MA gamma-BHC...	3.849f	4.576f	796161	16745385	0.573	8.810 #
4) MA Heptachlor	0.000	5.071f	0	947651	N.D.	0.505
6) B beta-BHC	4.117f	0.000	146216	0	0.248	N.D. #
8) B Heptachlo...	4.916f	0.000	5086904	0	4.503	N.D. #
9) A Endosulfan I	5.205	6.074	5720666	4231307	5.231	2.729 #
10) B trans-Chl...	5.106f	5.933	13518047	24160507	11.691	14.504
11) B cis-Chlor...	5.106	6.020	13518047	11360655	11.615	6.748 #
13) MA Dieldrin	5.402	6.321	19022532	15688222	15.660	9.372 #
14) MA Endrin	0.000	6.572f	0	2952816	N.D.	2.177
15) B Endosulfa...	5.878f	6.773	1752542	1552656	1.720	1.103 #
16) A 4,4'-DDD	0.000	6.660	0	3015206	N.D.	2.300
17) MA 4,4'-DDT	0.000	6.936	0	429988	N.D.	0.326
18) B Endrin al...	0.000	6.936f	0	429988	N.D.	0.349
19) B Endosulfa...	0.000	7.098	0	795511	N.D.	0.554
20) A Methoxychlor	6.610	7.469f	2368663	748693	5.248	1.084 #
21) B Endrin ke...	6.744f	7.530	-2797884	4085818	N.D.	2.809
22) Toxaphene-1	5.402	0.000	19022532	0	2990.044	N.D. #
23) Toxaphene-2	5.504	6.474	4461614	694271	616.622	65.899 #
24) Toxaphene-3	5.878	6.936	1752542	429988	318.634	32.347 #
25) Toxaphene-4	0.000	6.936	0	429988	N.D.	11.201
-----						

(f)=RT Delta > 1/2 Window (#)=Amounts differ by > 25% (m)=manual int.

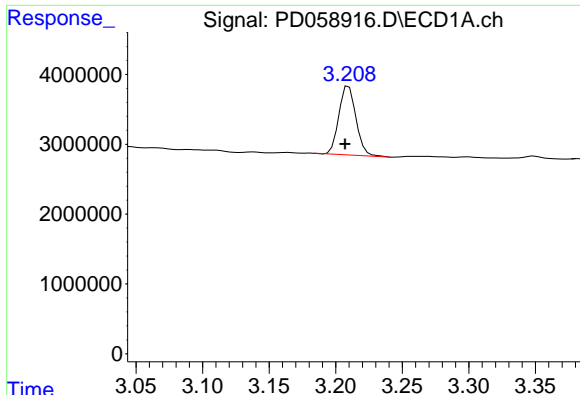
Data Path : Z:\pestpcbsrv\HPCHEM1\ECD\_D\Data\PD081220\  
 Data File : PD058916.D  
 Signal(s) : Signal #1: ECD1A.ch Signal #2: ECD2B.ch  
 Acq On : 12 Aug 2020 14:30  
 Operator : DD\AJ  
 Sample : L3612-13  
 Misc :  
 ALS Vial : 12 Sample Multiplier: 1

Integration File signal 1: autoint1.e  
 Integration File signal 2: autoint2.e  
 Quant Time: Aug 13 04:03:19 2020  
 Quant Method : Z:\pestpcbsrv\HPCHEM1\ECD\_D\Method\PD080620CLP.M  
 Quant Title : GC Extractables  
 QLast Update : Thu Aug 06 11:29:05 2020  
 Response via : Initial Calibration  
 Integrator: ChemStation

Volume Inj. : 1 µl  
 Signal #1 Phase : ZB-MR2 Signal #2 Phase: ZB-MR1  
 Signal #1 Info : 30M x 0.32mm x0.2 Signal #2 Info : 30M x 0.32mm x 0.50µm

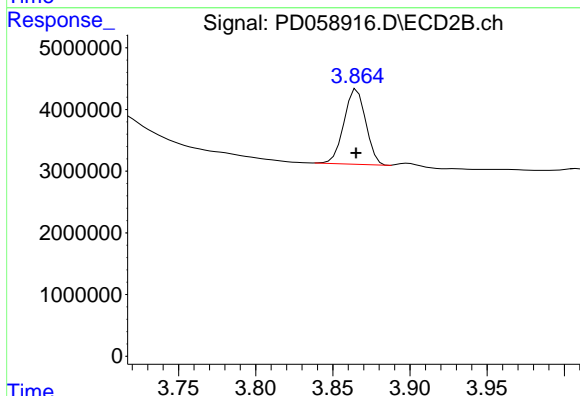


Instrument :  
 ECD\_D  
 ClientSampleId :

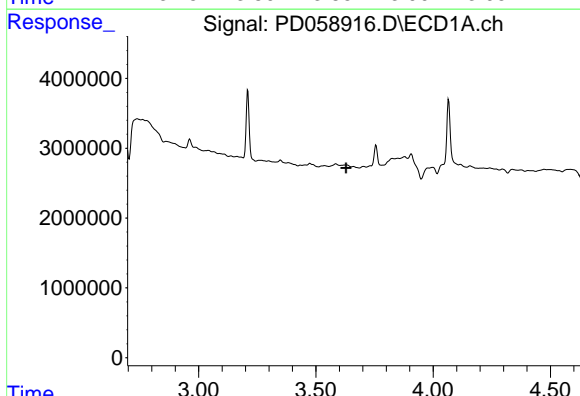


#1 Tetrachloro-m-xylene  
 R.T.: 3.210 min  
 Delta R.T.: 0.003 min  
 Response: 8750400  
 Conc: 9.05 ng/ml

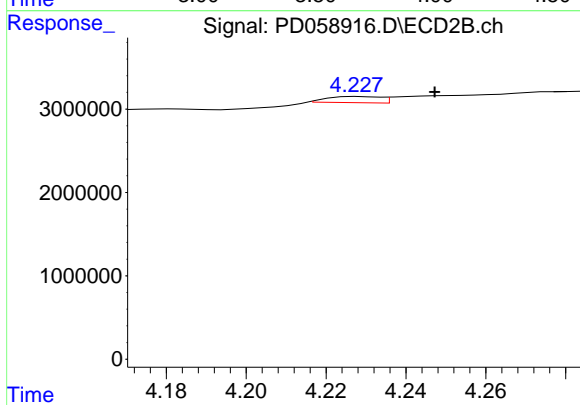
Instrument :  
 ECD\_D  
 ClientSampleId :



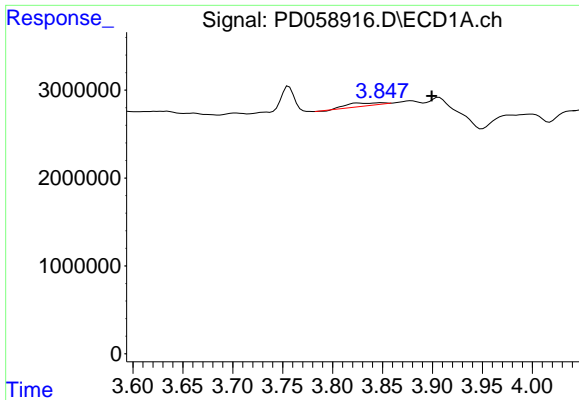
#1 Tetrachloro-m-xylene  
 R.T.: 3.866 min  
 Delta R.T.: 0.000 min  
 Response: 11964757  
 Conc: 8.26 ng/ml



#2 alpha-BHC  
 R.T.: 0.000 min  
 Exp R.T. : 3.628 min  
 Response: 0  
 Conc: N.D.

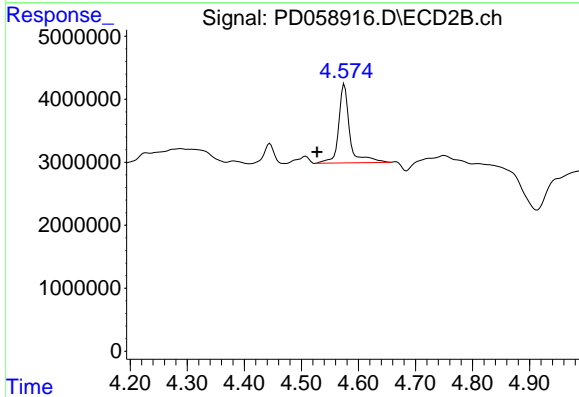


#2 alpha-BHC  
 R.T.: 4.228 min  
 Delta R.T.: -0.019 min  
 Response: 663423  
 Conc: 0.32 ng/ml

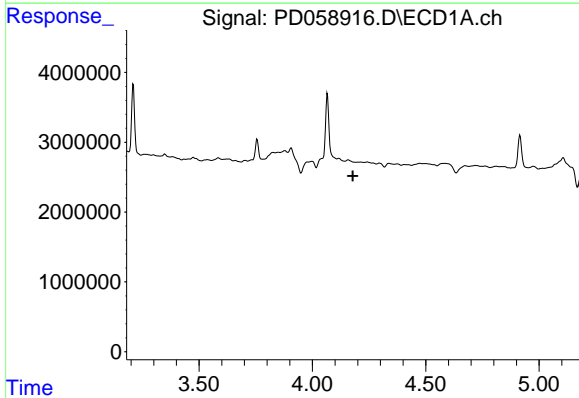


#3 gamma-BHC (Lindane)  
 R.T.: 3.849 min  
 Delta R.T.: -0.050 min  
 Response: 796161  
 Conc: 0.57 ng/ml

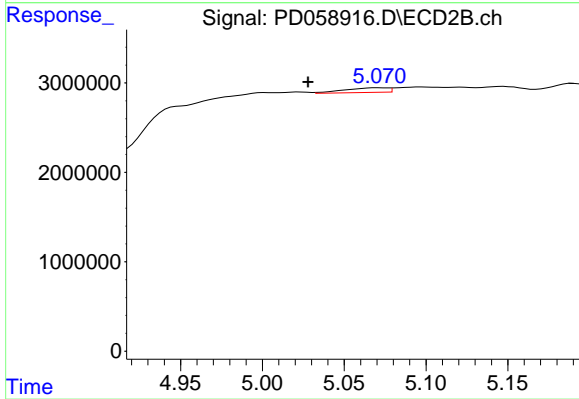
Instrument :  
 ECD\_D  
 ClientSampled :



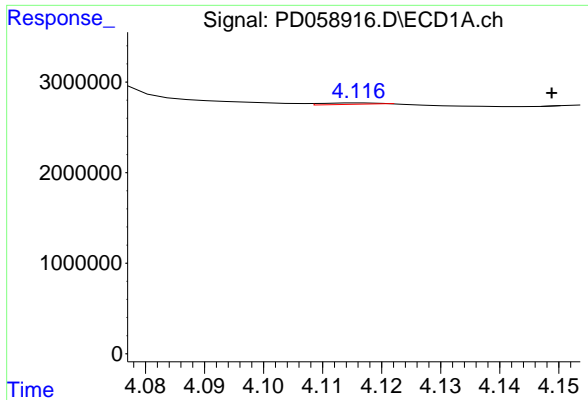
#3 gamma-BHC (Lindane)  
 R.T.: 4.576 min  
 Delta R.T.: 0.048 min  
 Response: 16745385  
 Conc: 8.81 ng/ml



#4 Heptachlor  
 R.T.: 0.000 min  
 Exp R.T. : 4.178 min  
 Response: 0  
 Conc: N.D.



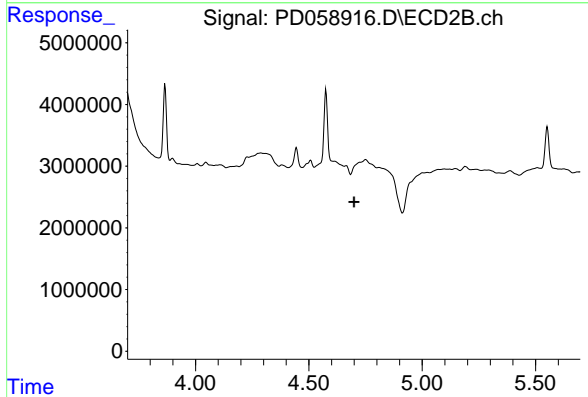
#4 Heptachlor  
 R.T.: 5.071 min  
 Delta R.T.: 0.043 min  
 Response: 947651  
 Conc: 0.51 ng/ml



#6 beta-BHC

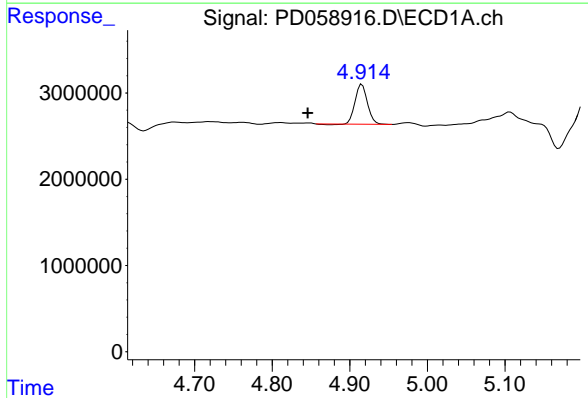
R.T.: 4.117 min  
 Delta R.T.: -0.032 min  
 Response: 146216  
 Conc: 0.25 ng/ml

Instrument :  
 ECD\_D  
 ClientSampleId :



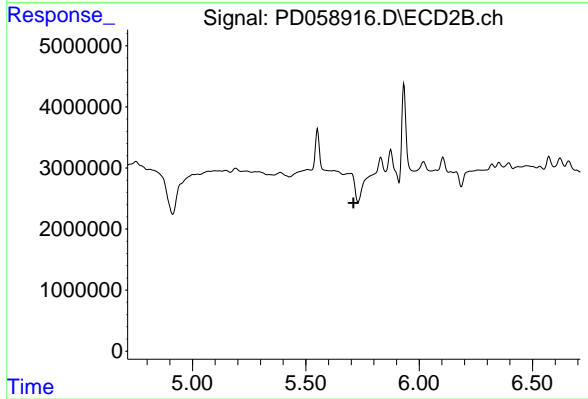
#6 beta-BHC

R.T.: 0.000 min  
 Exp R.T. : 4.700 min  
 Response: 0  
 Conc: N.D.



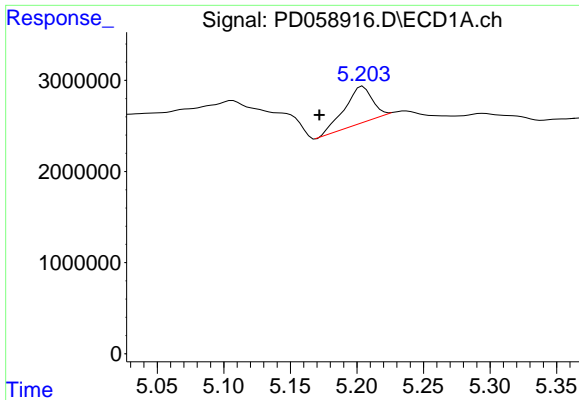
#8 Heptachlor epoxide

R.T.: 4.916 min  
 Delta R.T.: 0.070 min  
 Response: 5086904  
 Conc: 4.50 ng/ml



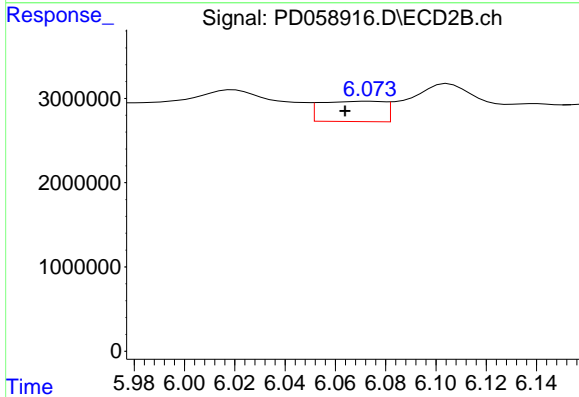
#8 Heptachlor epoxide

R.T.: 0.000 min  
 Exp R.T. : 5.711 min  
 Response: 0  
 Conc: N.D.

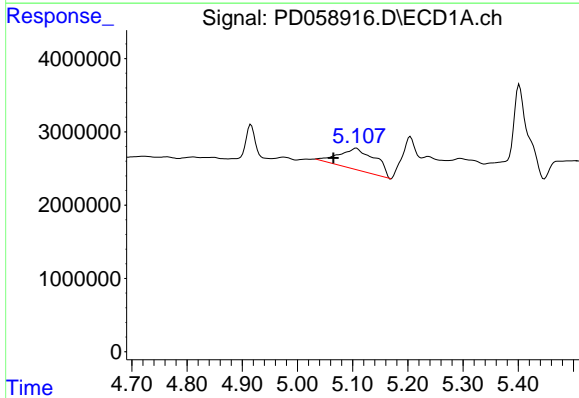


#9 Endosulfan I  
 R.T.: 5.205 min  
 Delta R.T.: 0.033 min  
 Response: 5720666  
 Conc: 5.23 ng/ml

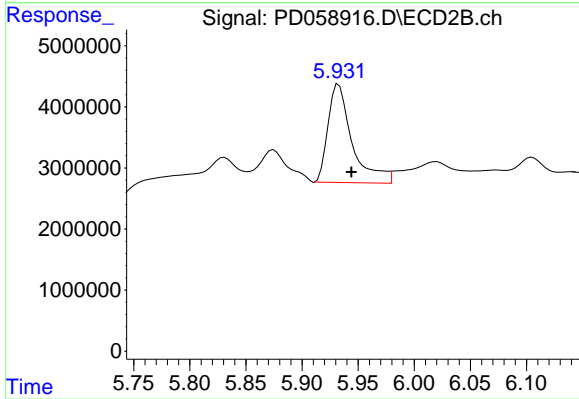
Instrument :  
 ECD\_D  
 ClientSampleId :



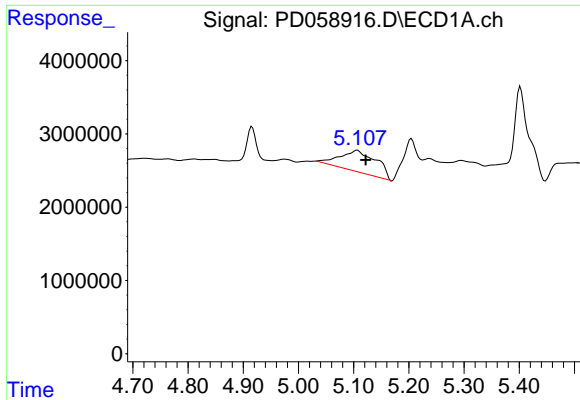
#9 Endosulfan I  
 R.T.: 6.074 min  
 Delta R.T.: 0.010 min  
 Response: 4231307  
 Conc: 2.73 ng/ml



#10 trans-Chlordane  
 R.T.: 5.106 min  
 Delta R.T.: 0.041 min  
 Response: 13518047  
 Conc: 11.69 ng/ml

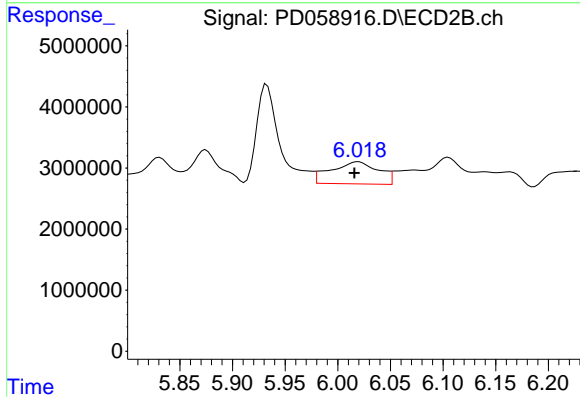


#10 trans-Chlordane  
 R.T.: 5.933 min  
 Delta R.T.: -0.011 min  
 Response: 24160507  
 Conc: 14.50 ng/ml

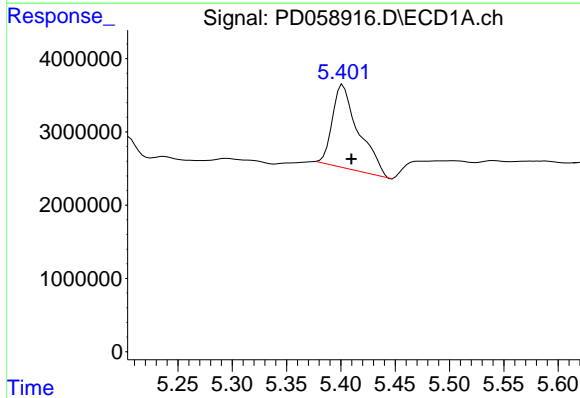


#11 cis-Chlordane  
 R.T.: 5.106 min  
 Delta R.T.: -0.016 min  
 Response: 13518047  
 Conc: 11.62 ng/ml

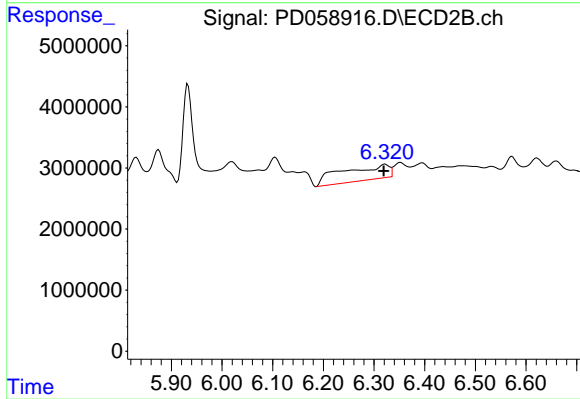
Instrument :  
 ECD\_D  
 ClientSampled :



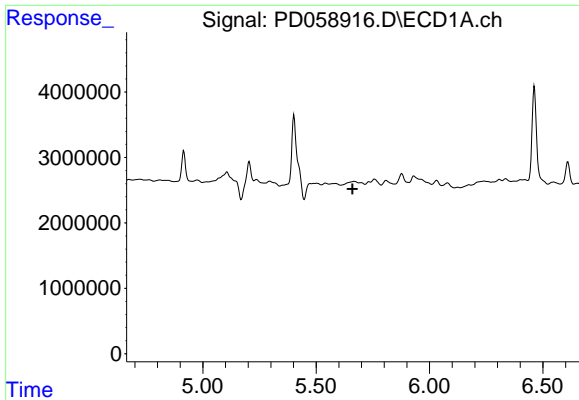
#11 cis-Chlordane  
 R.T.: 6.020 min  
 Delta R.T.: 0.004 min  
 Response: 11360655  
 Conc: 6.75 ng/ml



#13 Dieldrin  
 R.T.: 5.402 min  
 Delta R.T.: -0.008 min  
 Response: 19022532  
 Conc: 15.66 ng/ml



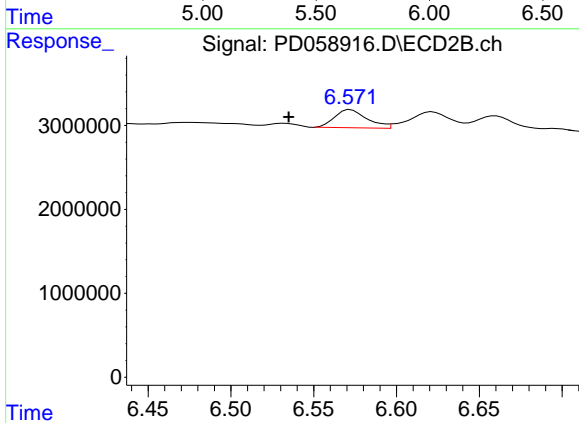
#13 Dieldrin  
 R.T.: 6.321 min  
 Delta R.T.: 0.002 min  
 Response: 15688222  
 Conc: 9.37 ng/ml



#14 Endrin

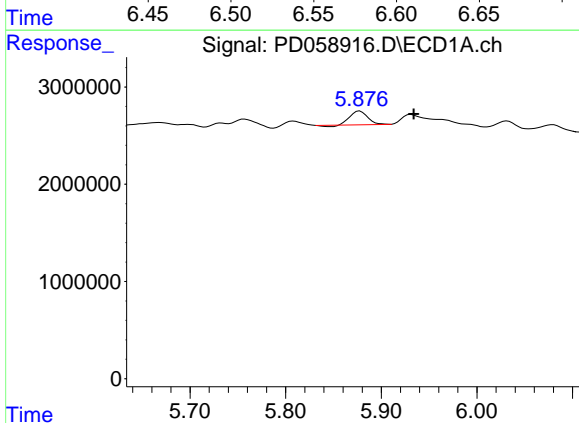
R.T.: 0.000 min  
 Exp R.T.: 5.661 min  
 Response: 0  
 Conc: N.D.

Instrument :  
 ECD\_D  
 ClientSampleId :



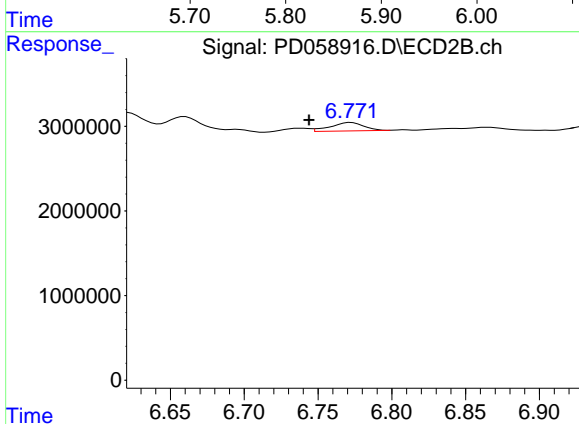
#14 Endrin

R.T.: 6.572 min  
 Delta R.T.: 0.037 min  
 Response: 2952816  
 Conc: 2.18 ng/ml



#15 Endosulfan II

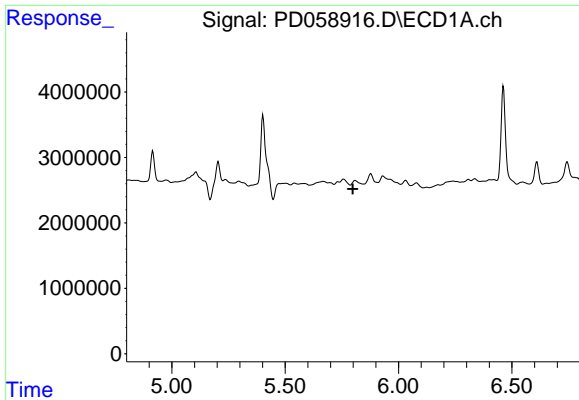
R.T.: 5.878 min  
 Delta R.T.: -0.056 min  
 Response: 1752542  
 Conc: 1.72 ng/ml



#15 Endosulfan II

R.T.: 6.773 min  
 Delta R.T.: 0.029 min  
 Response: 1552656  
 Conc: 1.10 ng/ml

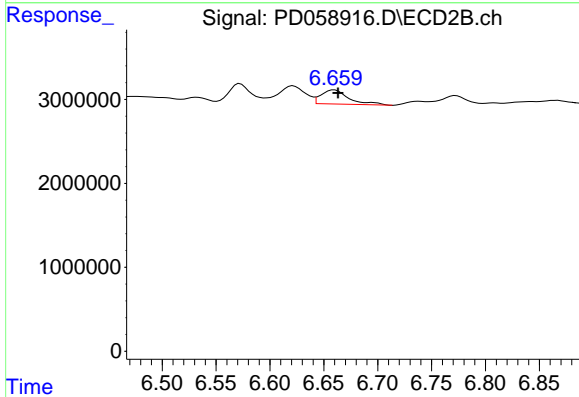




#16 4,4'-DDD

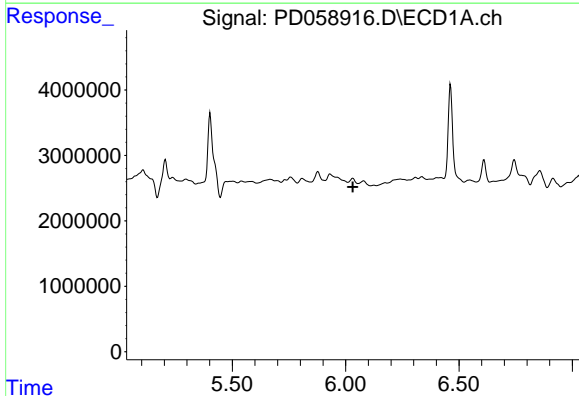
R.T.: 0.000 min  
 Exp R.T.: 5.798 min  
 Response: 0  
 Conc: N.D.

Instrument :  
 ECD\_D  
 ClientSampled :



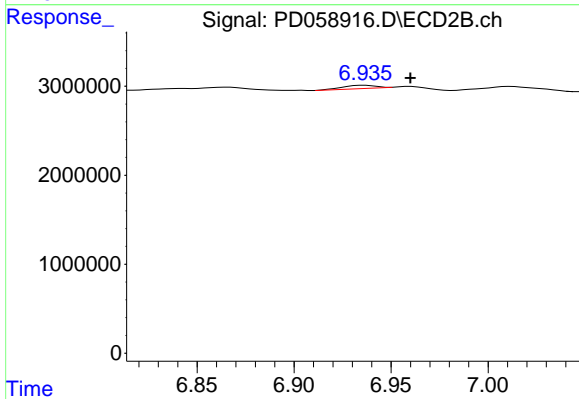
#16 4,4'-DDD

R.T.: 6.660 min  
 Delta R.T.: -0.003 min  
 Response: 3015206  
 Conc: 2.30 ng/ml



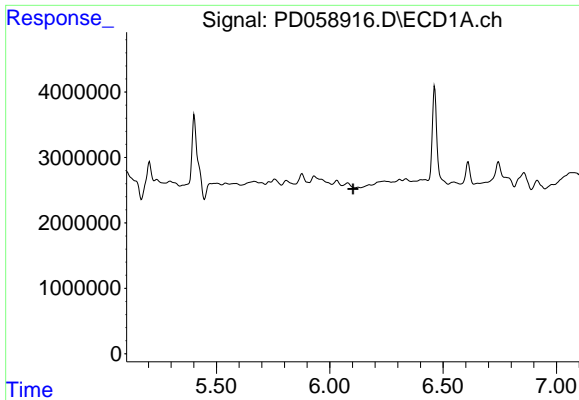
#17 4,4'-DDT

R.T.: 0.000 min  
 Exp R.T.: 6.032 min  
 Response: 0  
 Conc: N.D.



#17 4,4'-DDT

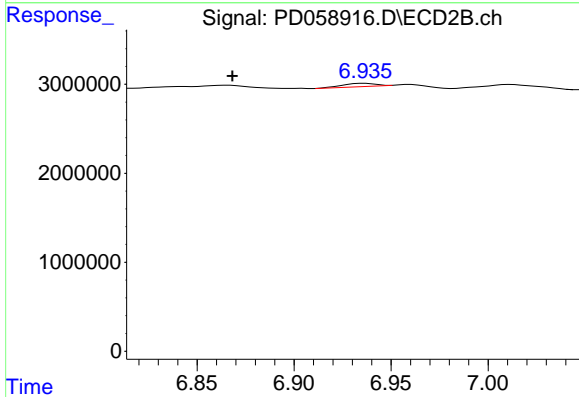
R.T.: 6.936 min  
 Delta R.T.: -0.023 min  
 Response: 429988  
 Conc: 0.33 ng/ml



#18 Endrin aldehyde

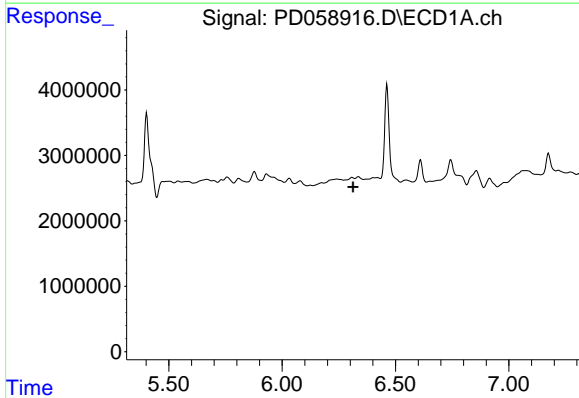
R.T.: 0.000 min  
 Exp R.T. : 6.103 min  
 Response: 0  
 Conc: N.D.

Instrument :  
 ECD\_D  
 ClientSampled :



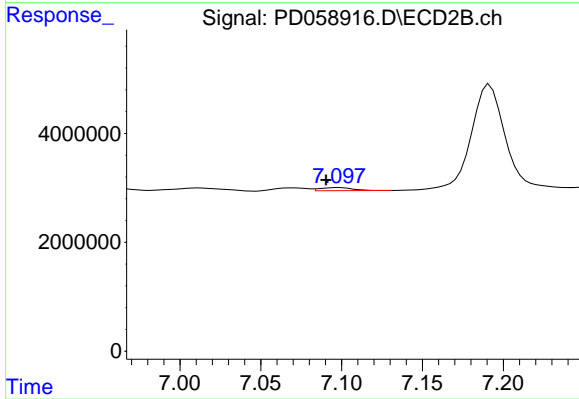
#18 Endrin aldehyde

R.T.: 6.936 min  
 Delta R.T.: 0.068 min  
 Response: 429988  
 Conc: 0.35 ng/ml



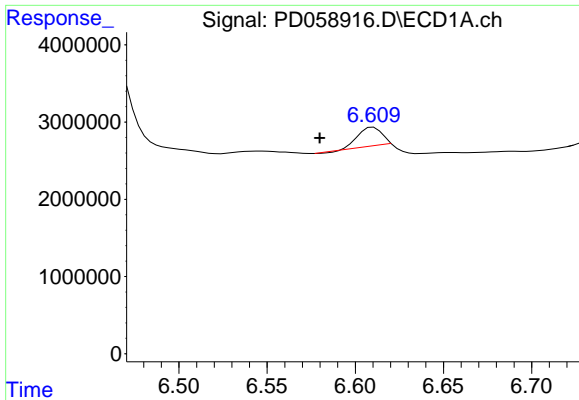
#19 Endosulfan Sulfate

R.T.: 0.000 min  
 Exp R.T. : 6.312 min  
 Response: 0  
 Conc: N.D.



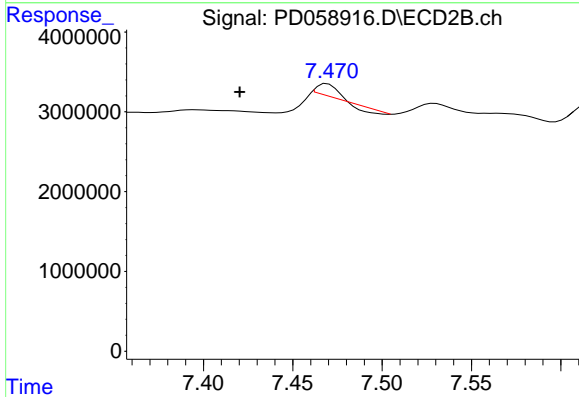
#19 Endosulfan Sulfate

R.T.: 7.098 min  
 Delta R.T.: 0.008 min  
 Response: 795511  
 Conc: 0.55 ng/ml

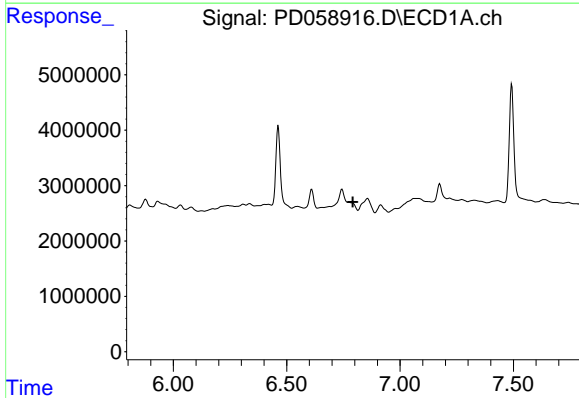


#20 Methoxychlor  
 R.T.: 6.610 min  
 Delta R.T.: 0.030 min  
 Response: 2368663  
 Conc: 5.25 ng/ml

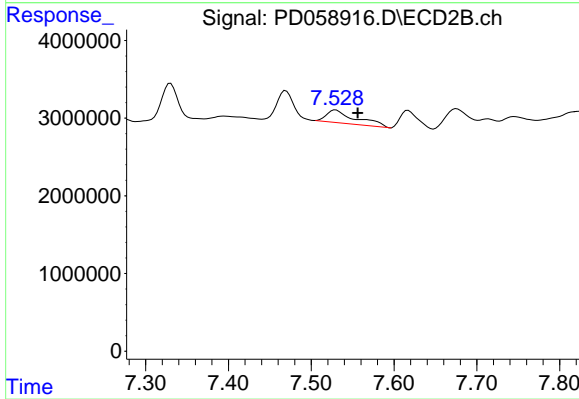
Instrument :  
 ECD\_D  
 ClientSampled :



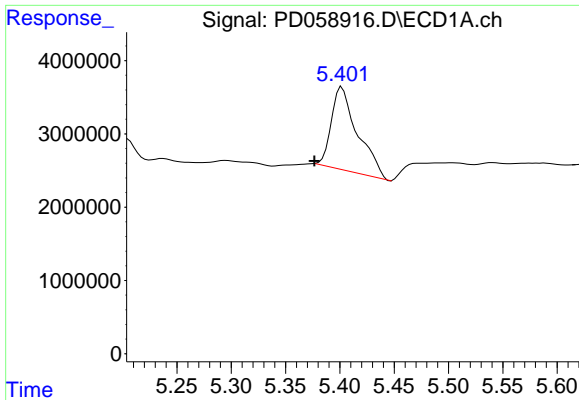
#20 Methoxychlor  
 R.T.: 7.469 min  
 Delta R.T.: 0.049 min  
 Response: 748693  
 Conc: 1.08 ng/ml



#21 Endrin ketone  
 R.T.: 6.744 min  
 Delta R.T.: -0.048 min  
 Response: -2797884  
 Conc: N.D.

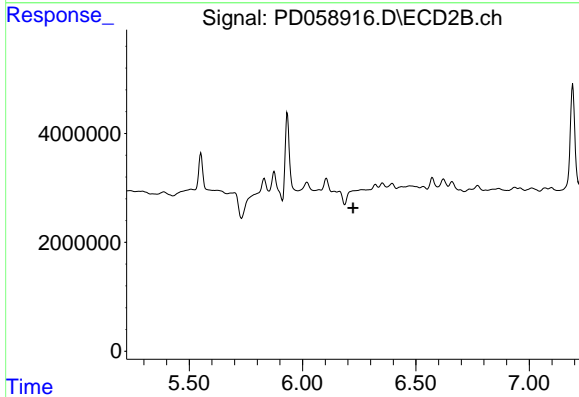


#21 Endrin ketone  
 R.T.: 7.530 min  
 Delta R.T.: -0.027 min  
 Response: 4085818  
 Conc: 2.81 ng/ml

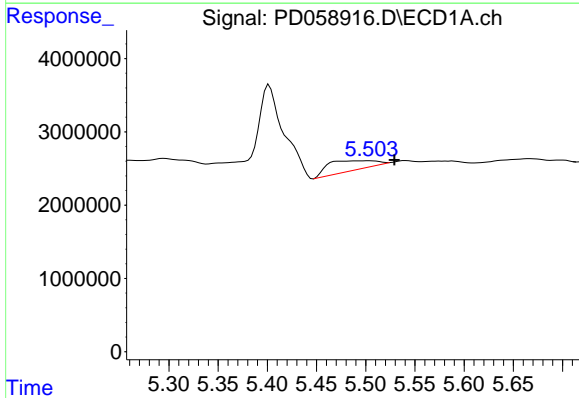


#22 Toxaphene-1  
 R.T.: 5.402 min  
 Delta R.T.: 0.025 min  
 Response: 19022532  
 Conc: 2990.04 ng/ml

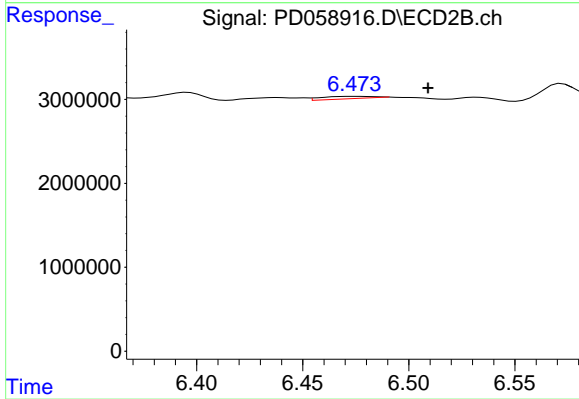
Instrument :  
 ECD\_D  
 ClientSampleId :



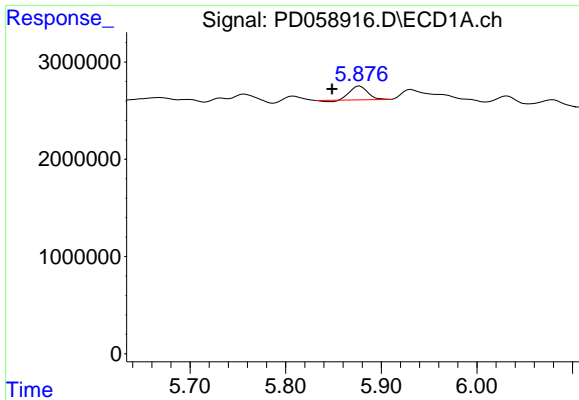
#22 Toxaphene-1  
 R.T.: 0.000 min  
 Exp R.T. : 6.223 min  
 Response: 0  
 Conc: N.D.



#23 Toxaphene-2  
 R.T.: 5.504 min  
 Delta R.T.: -0.025 min  
 Response: 4461614  
 Conc: 616.62 ng/ml

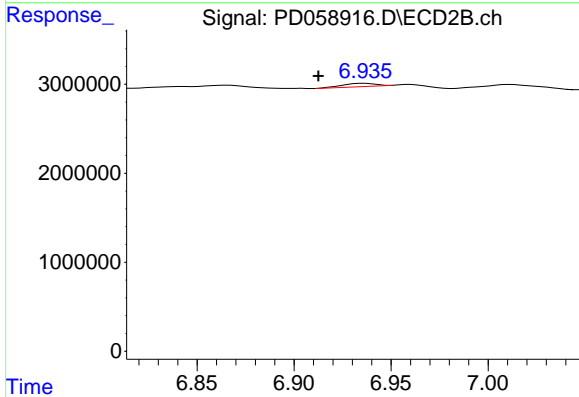


#23 Toxaphene-2  
 R.T.: 6.474 min  
 Delta R.T.: -0.035 min  
 Response: 694271  
 Conc: 65.90 ng/ml

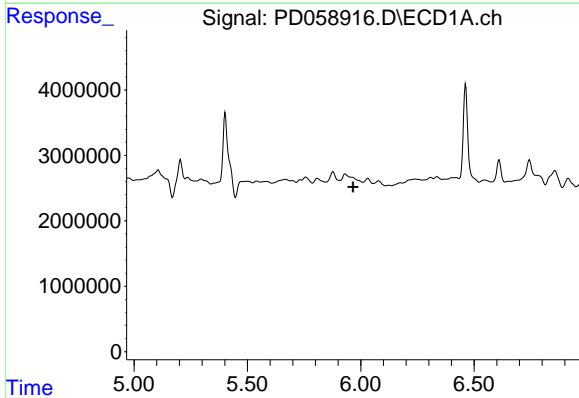


#24 Toxaphene-3  
 R.T.: 5.878 min  
 Delta R.T.: 0.029 min  
 Response: 1752542  
 Conc: 318.63 ng/ml

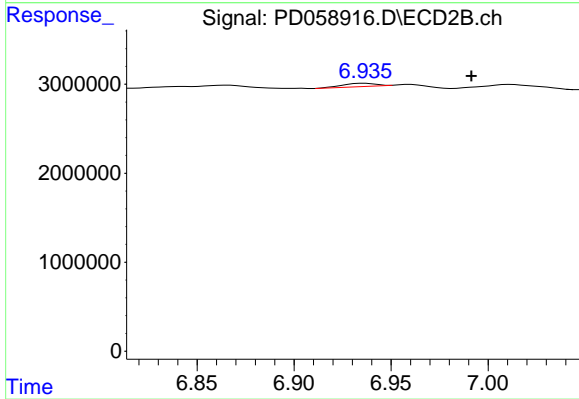
Instrument :  
 ECD\_D  
 ClientSampled :



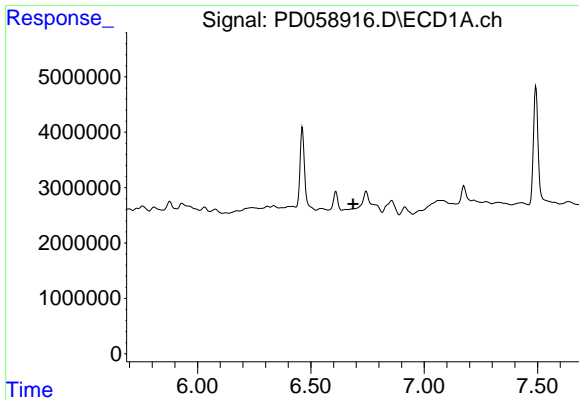
#24 Toxaphene-3  
 R.T.: 6.936 min  
 Delta R.T.: 0.024 min  
 Response: 429988  
 Conc: 32.35 ng/ml



#25 Toxaphene-4  
 R.T.: 0.000 min  
 Exp R.T. : 5.966 min  
 Response: 0  
 Conc: N.D.



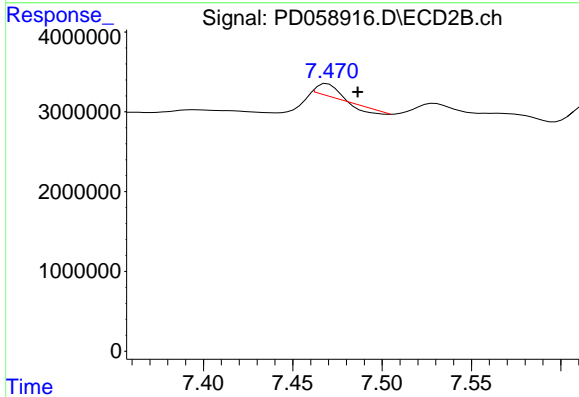
#25 Toxaphene-4  
 R.T.: 6.936 min  
 Delta R.T.: -0.055 min  
 Response: 429988  
 Conc: 11.20 ng/ml



#26 Toxaphene-5

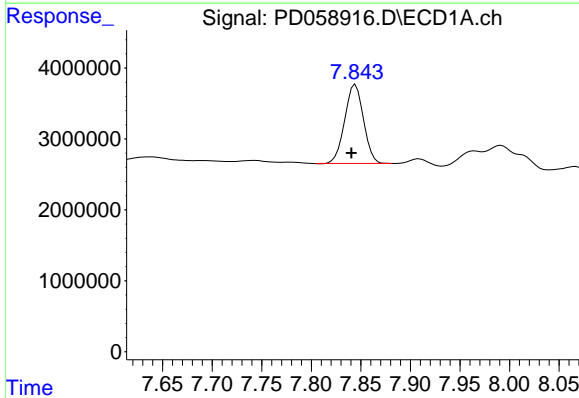
R.T.: 6.744 min  
 Delta R.T.: 0.058 min  
 Response: -2797884  
 Conc: N.D.

Instrument :  
 ECD\_D  
 ClientSampled :



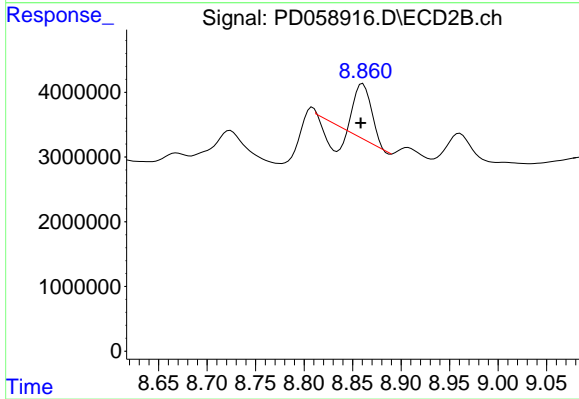
#26 Toxaphene-5

R.T.: 7.469 min  
 Delta R.T.: -0.017 min  
 Response: 748693  
 Conc: 42.00 ng/ml



#27 Decachlorobiphenyl

R.T.: 7.845 min  
 Delta R.T.: 0.004 min  
 Response: 14669684  
 Conc: 13.93 ng/ml



#27 Decachlorobiphenyl

R.T.: 8.861 min  
 Delta R.T.: 0.002 min  
 Response: 6635875  
 Conc: 4.84 ng/ml