

Data Path : Z:\pestpcbsrv\HPCHEM1\ECD_D\Data\PD081220\
 Data File : PD058923.D
 Signal(s) : Signal #1: ECD1A.ch Signal #2: ECD2B.ch
 Acq On : 12 Aug 2020 16:41
 Operator : DD\AJ
 Sample : L3612-10
 Misc :
 ALS Vial : 18 Sample Multiplier: 1

Instrument :
 ECD_D
ClientSampleID :
 DBFN8

Manual Integrations
APPROVED
 Ankita
 8/14/2020 8:34:23 AM

Integration File signal 1: autoint1.e
 Integration File signal 2: autoint2.e
 Quant Time: Aug 13 06:25:36 2020
 Quant Method : Z:\pestpcbsrv\HPCHEM1\ECD_D\Method\PD080620CLP.M
 Quant Title : GC Extractables
 QLast Update : Thu Aug 06 11:29:05 2020
 Response via : Initial Calibration
 Integrator: ChemStation

Volume Inj. : 1 µl
 Signal #1 Phase : ZB-MR2 Signal #2 Phase: ZB-MR1
 Signal #1 Info : 30M x 0.32mm x0.2 Signal #2 Info : 30M x 0.32mm x 0.50µm

Compound	RT#1	RT#2	Resp#1	Resp#2	ng/ml	ng/ml

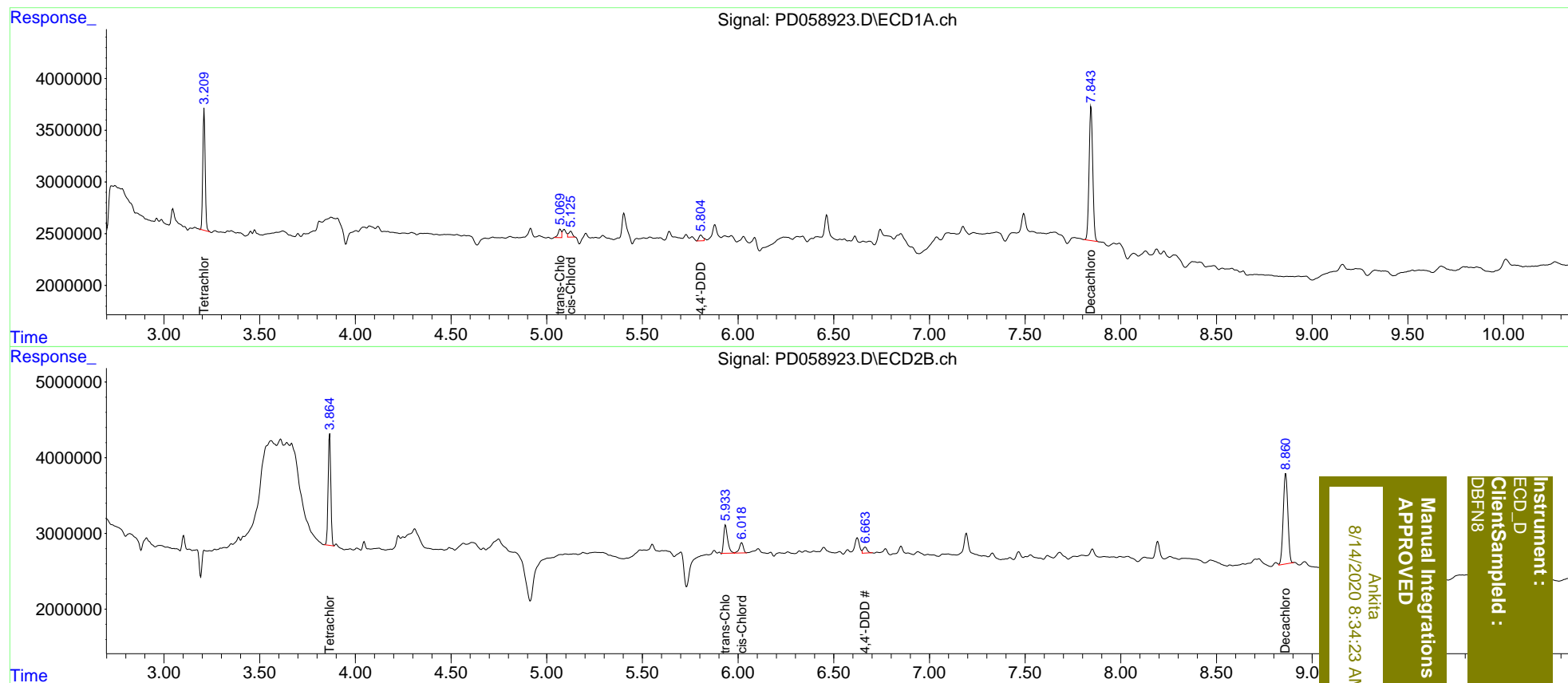
System Monitoring Compounds						
1) SA Tetrachlo...	3.210	3.866	10094730	14203831	10.438	9.808
27) SA Decachlor...	7.845	8.862	17191972	20024111	16.322	14.601
Target Compounds						
10) B trans-Chl...	5.069	5.934	835971	5326112	0.723m	3.197 #
11) B cis-Chlor...	5.125	6.019	759657	1993812	0.653m	1.184 #
16) A 4,4'-DDD	5.804	6.665	806047	1191236	0.855m	0.909

(f)=RT Delta > 1/2 Window (#)=Amounts differ by > 25% (m)=manual int.

Data Path : Z:\pestpcbsrv\HPCHEM1\ECD_D\Data\PD081220\
 Data File : PD058923.D
 Signal(s) : Signal #1: ECD1A.ch Signal #2: ECD2B.ch
 Acq On : 12 Aug 2020 16:41
 Operator : DD\AJ
 Sample : L3612-10
 Misc :
 ALS Vial : 18 Sample Multiplier: 1

Integration File signal 1: autoint1.e
 Integration File signal 2: autoint2.e
 Quant Time: Aug 13 06:25:36 2020
 Quant Method : Z:\pestpcbsrv\HPCHEM1\ECD_D\Method\PD080620CLP.M
 Quant Title : GC Extractables
 QLast Update : Thu Aug 06 11:29:05 2020
 Response via : Initial Calibration
 Integrator: ChemStation

Volume Inj. : 1 µl
 Signal #1 Phase : ZB-MR2 Signal #2 Phase: ZB-MR1
 Signal #1 Info : 30M x 0.32mm x0.2 Signal #2 Info : 30M x 0.32mm x 0.50µm



Instrument :
 ECD_D
 ClientSampleId :
 DBFN8

Manual Integrations
 APPROVED
 Ankitia
 8/14/2020 8:34:23 AM