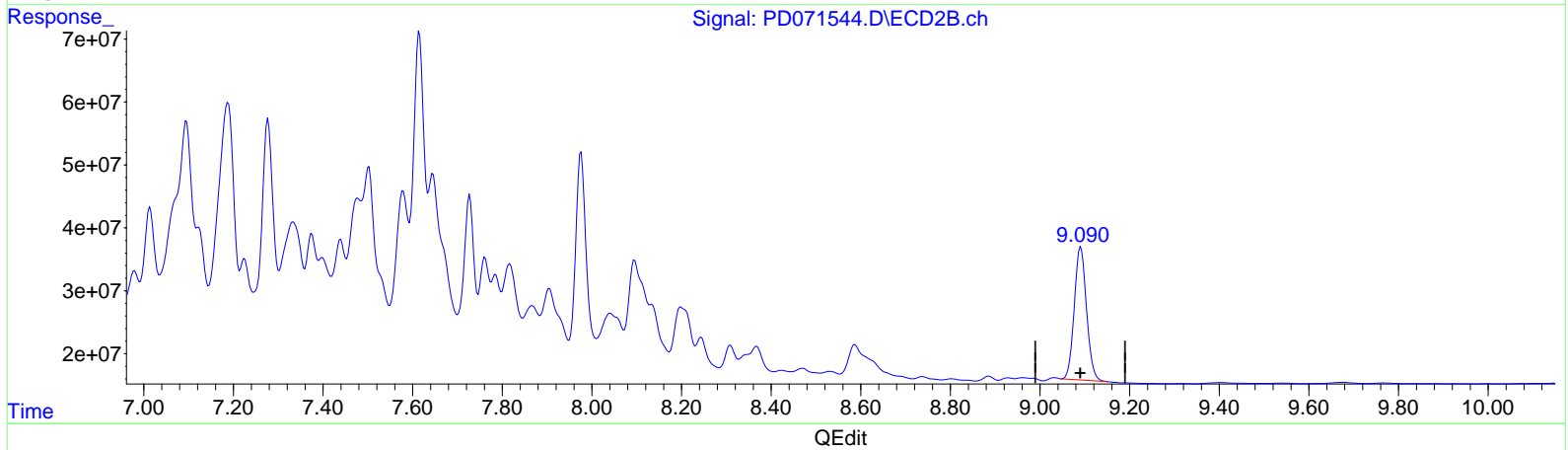
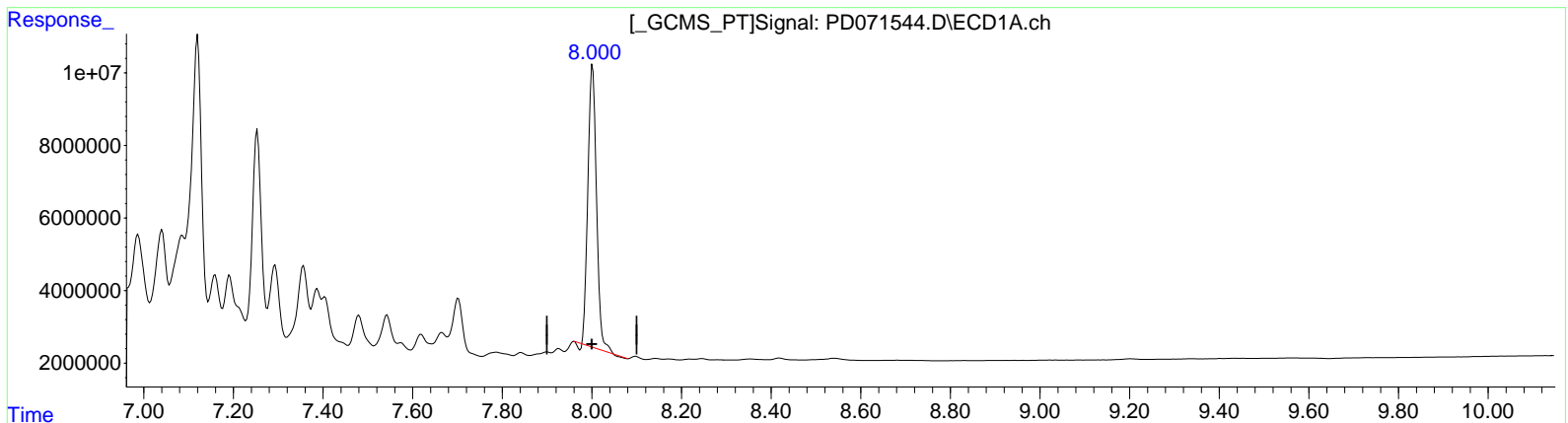


Data Path : Z:\pestpcbsrv\HPCHEM1\ECD_D\Data\PD081222\
 Data File : PD071544.D
 Signal(s) : Signal #1: ECD1A.ch Signal #2: ECD2B.ch
 Acq On : 12 Aug 2022 12:10
 Operator : AR\AJ
 Sample : TOXAPHENE310
 Misc :
 ALS Vial : 4 Sample Multiplier: 1

Integration File signal 1: autoint1.e
 Integration File signal 2: autoint2.e
 Quant Time: Aug 12 22:26:56 2022
 Quant Method : Z:\pestpcbsrv\HPCHEM1\ECD_D\Method\PD081122CLP.M
 Quant Title : GC Extractables
 QLast Update : Thu Aug 11 04:21:34 2022
 Response via : Initial Calibration
 Integrator: ChemStation

Volume Inj. : 1 µl
 Signal #1 Phase : ZB-MR2 Signal #2 Phase: ZB-MR1
 Signal #1 Info : 30M x 0.32mm x0.2 Signal #2 Info : 30M x 0.32mm x 0.50µm



(27) Decachlorobiphenyl (SA)

8.002min 36.978 ng/ml

response 103821027

(27) Decachlorobiphenyl #2 (SA)

9.091min 41.854 ng/ml

response 401232865