

Data Path : Z:\pestpcbsrv\HPCHEM1\ECD_D\Data\PD081523\
 Data File : PD077187.D
 Signal(s) : Signal #1: ECD1A.ch Signal #2: ECD2B.ch
 Acq On : 15 Aug 2023 12:24
 Operator : AR\AJ
 Sample : TOXAPHENE306
 Misc :
 ALS Vial : 4 Sample Multiplier: 1

Instrument :
 ECD_D
ClientSampleId :
 TOXAPH3195

Manual Integrations
APPROVED
 Reviewed By :Abdul Mirza 08/16/2023
 Supervised By :Ankita Jodhani 08/16/2023

Integration File signal 1: autoint1.e
 Integration File signal 2: autoint2.e
 Quant Time: Aug 16 00:03:18 2023
 Quant Method : Z:\pestpcbsrv\HPCHEM1\ECD_D\Method\PD081423CLP.M
 Quant Title : GC Extractables
 QLast Update : Tue Aug 15 01:53:32 2023
 Response via : Initial Calibration
 Integrator: ChemStation

Volume Inj. : 1 µl
 Signal #1 Phase : ZB-MR1 Signal #2 Phase: ZB-MR2
 Signal #1 Info : 30M x 0.32mm x0.5 Signal #2 Info : 30M x 0.32mm x 0.25µm

Compound	RT#1	RT#2	Resp#1	Resp#2	ng/ml	ng/ml

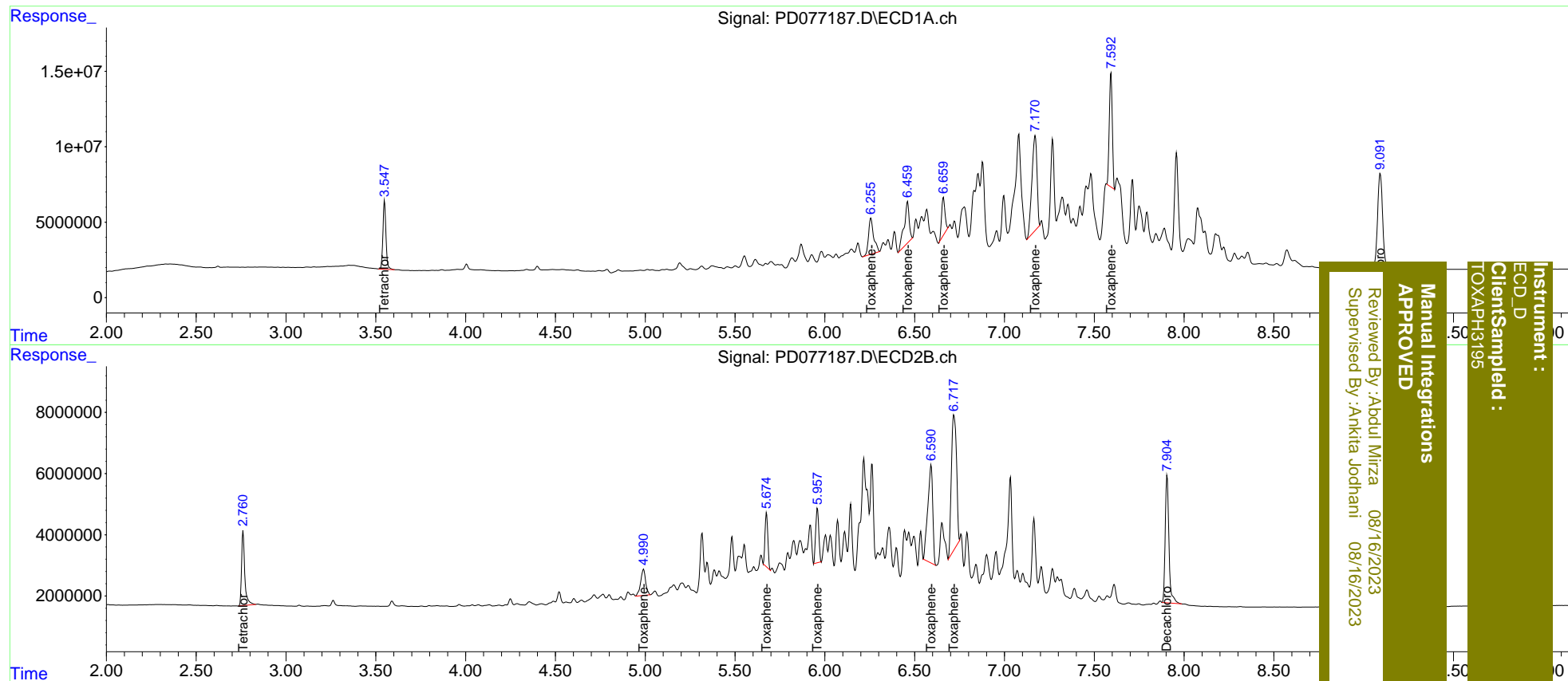
System Monitoring Compounds						
1) SA Tetrachlo...	3.549	2.761	53185518	29960307	24.226	24.050
27) SA Decachlor...	9.092	7.904	120.3E6	60025690	47.262	48.154m
Target Compounds						
22) Toxaphene-1	6.257	4.990	47042508	16483344	2106.674	1921.726m
23) Toxaphene-2	6.461	5.674	53836528	18985944	1960.749	2170.226m
24) Toxaphene-3	6.659	5.957	33156061	21310764	1731.006m	2053.083m
25) Toxaphene-4	7.170	6.590	125.0E6	61651291	2064.354m	2149.719m
26) Toxaphene-5	7.592	6.717	88511654	87857586	2066.877m	2105.866m

(f)=RT Delta > 1/2 Window (#)=Amounts differ by > 25% (m)=manual int.

Data Path : Z:\pestpcbsrv\HPCHEM1\ECD_D\Data\PD081523\
 Data File : PD077187.D
 Signal(s) : Signal #1: ECD1A.ch Signal #2: ECD2B.ch
 Acq On : 15 Aug 2023 12:24
 Operator : AR\AJ
 Sample : TOXAPHENE306
 Misc :
 ALS Vial : 4 Sample Multiplier: 1

Integration File signal 1: autoint1.e
 Integration File signal 2: autoint2.e
 Quant Time: Aug 16 00:03:18 2023
 Quant Method : Z:\pestpcbsrv\HPCHEM1\ECD_D\Method\PD081423CLP.M
 Quant Title : GC Extractables
 QLast Update : Tue Aug 15 01:53:32 2023
 Response via : Initial Calibration
 Integrator: ChemStation

Volume Inj. : 1 µl
 Signal #1 Phase : ZB-MR1 Signal #2 Phase: ZB-MR2
 Signal #1 Info : 30M x 0.32mm x0.5 Signal #2 Info : 30M x 0.32mm x 0.25µm



Instrument : ECD_D
 ClientSampleId : TOXAPH3195
 Manual Integrations APPROVED
 Reviewed By :Abdul Mirza 08/16/2023
 Supervised By :Ankita Jodhani 08/16/2023