

Data Path : Z:\pestpcbsrv\HPCHEM1\ECD_D\Data\PD081523\
 Data File : PD077193.D
 Signal(s) : Signal #1: ECD1A.ch Signal #2: ECD2B.ch
 Acq On : 15 Aug 2023 14:27
 Operator : AR\AJ
 Sample : PEM142
 Misc :
 ALS Vial : 3 Sample Multiplier: 1

Instrument :
 ECD_D
ClientSampleId :
 PEM152

Manual Integrations
APPROVED

Reviewed By :Abdul Mirza 08/16/2023
 Supervised By :Ankita Jodhani 08/16/2023

Integration File signal 1: autoint1.e
 Integration File signal 2: autoint2.e
 Quant Time: Aug 16 00:07:21 2023
 Quant Method : Z:\pestpcbsrv\HPCHEM1\ECD_D\Method\PD081423CLP.M
 Quant Title : GC Extractables
 QLast Update : Tue Aug 15 01:53:32 2023
 Response via : Initial Calibration
 Integrator: ChemStation

Volume Inj. : 1 µl
 Signal #1 Phase : ZB-MR1 Signal #2 Phase: ZB-MR2
 Signal #1 Info : 30M x 0.32mm x0.5 Signal #2 Info : 30M x 0.32mm x 0.25µm

Compound	RT#1	RT#2	Resp#1	Resp#2	ng/ml	ng/ml

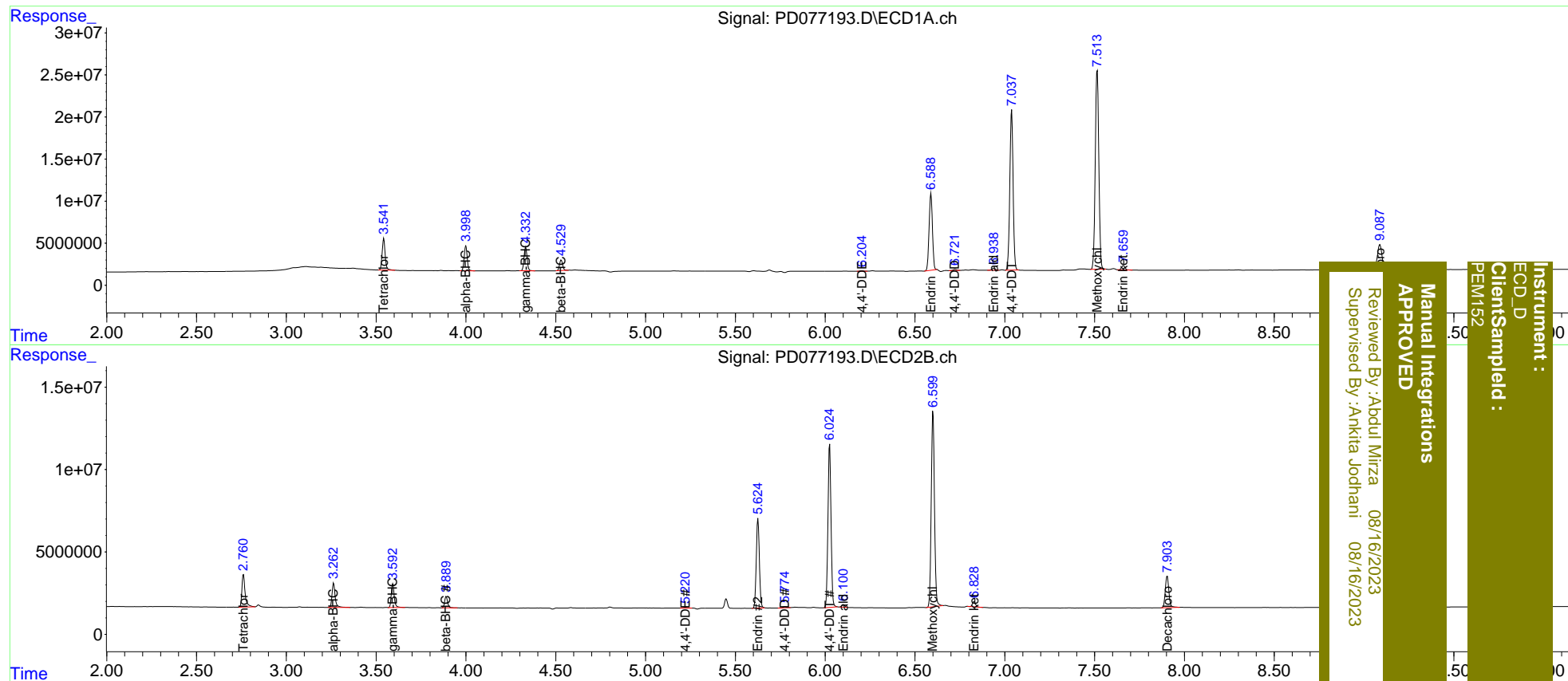
System Monitoring Compounds						
1) SA Tetrachlo...	3.543	2.761	44297001	24622840	20.177	19.765
27) SA Decachlor...	9.088	7.904	54214802	26687664	21.306	21.410
Target Compounds						
2) A alpha-BHC	4.000	3.263	34608176	17765549	9.579	9.664
3) MA gamma-BHC...	4.333	3.593	33113959	16514805	9.702	9.576
6) B beta-BHC	4.530	3.890	15281572	7975726	9.847	9.770
12) B 4,4'-DDE	6.204	5.220	545837	536073	0.191m	0.394m#
14) MA Endrin	6.589	5.626	117.8E6	64604349	46.322	46.542
16) A 4,4'-DDD	6.723	5.776	1604430	844484	0.738	0.849
17) MA 4,4'-DDT	7.038	6.025	241.3E6	118.5E6	109.385	114.415
18) B Endrin al...	6.939	6.100	3257970	1905310	1.514	1.754m
20) A Methoxychlor	7.515	6.600	325.0E6	148.5E6	252.644	263.226
21) B Endrin ke...	7.660	6.829	6550303	3593291	2.327	2.441

(f)=RT Delta > 1/2 Window (#)=Amounts differ by > 25% (m)=manual int.

Data Path : Z:\pestpcbsrv\HPCHEM1\ECD_D\Data\PD081523\
 Data File : PD077193.D
 Signal(s) : Signal #1: ECD1A.ch Signal #2: ECD2B.ch
 Acq On : 15 Aug 2023 14:27
 Operator : AR\AJ
 Sample : PEM142
 Misc :
 ALS Vial : 3 Sample Multiplier: 1

Integration File signal 1: autoint1.e
 Integration File signal 2: autoint2.e
 Quant Time: Aug 16 00:07:21 2023
 Quant Method : Z:\pestpcbsrv\HPCHEM1\ECD_D\Method\PD081423CLP.M
 Quant Title : GC Extractables
 QLast Update : Tue Aug 15 01:53:32 2023
 Response via : Initial Calibration
 Integrator: ChemStation

Volume Inj. : 1 µl
 Signal #1 Phase : ZB-MR1 Signal #2 Phase: ZB-MR2
 Signal #1 Info : 30M x 0.32mm x0.5 Signal #2 Info : 30M x 0.32mm x 0.25µm



Instrument : ECD_D
 Client/Sample : PEM152
 Manual Integrations APPROVED
 Reviewed By : Aboul Mirza 08/16/2023
 Supervised By : Ankita Jodhani 08/16/2023