

Data Path : Z:\pestpcbsrv\HPCHEM1\ECD_D\Data\PD081524\
 Data File : PD084456.D
 Signal(s) : Signal #1: ECD1A.ch Signal #2: ECD2B.ch
 Acq On : 15 Aug 2024 13:02
 Operator : AR\AJ
 Sample : P3555-12
 Misc :
 ALS Vial : 16 Sample Multiplier: 1

Instrument :
 ECD_D
ClientSampleId :
 DCXW1

Manual Integrations
APPROVED
 Reviewed By :Abdul Mirza 08/16/2024
 Supervised By :Ankita Jodhani 08/16/2024

Integration File signal 1: autoint1.e
 Integration File signal 2: autoint2.e
 Quant Time: Aug 16 01:43:00 2024
 Quant Method : Z:\pestpcbsrv\HPCHEM1\ECD_D\Method\PD081224CLP.M
 Quant Title : GC Extractables
 QLast Update : Mon Aug 12 16:40:36 2024
 Response via : Initial Calibration
 Integrator: ChemStation

Volume Inj. : 1 µl
 Signal #1 Phase : ZB-MR1 Signal #2 Phase: ZB-MR2
 Signal #1 Info : 30M x 0.32mm x0.5 Signal #2 Info : 30M x 0.32mm x 0.25µm

Compound	RT#1	RT#2	Resp#1	Resp#2	ng/ml	ng/ml

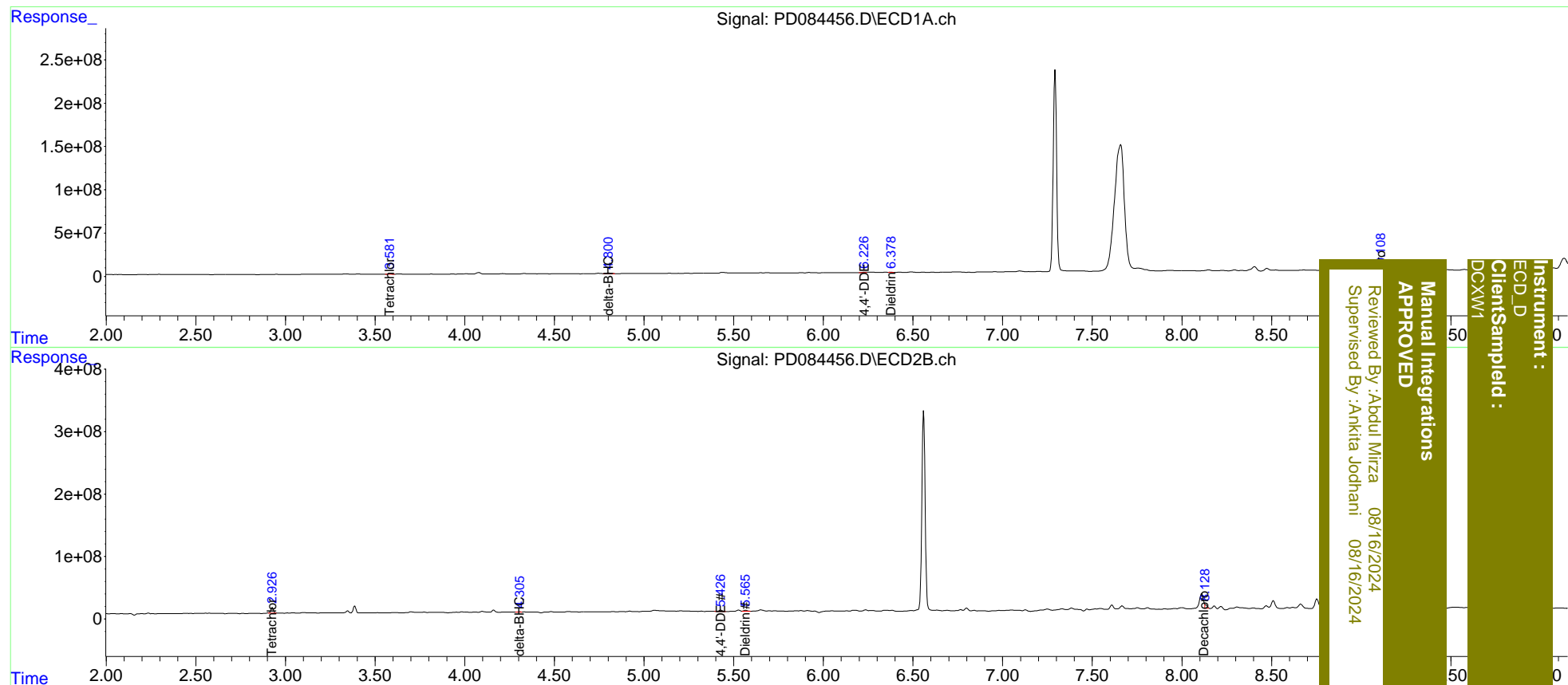
System Monitoring Compounds						
1) SA Tetrachlo...	3.582	2.926	13597469	93686923	16.219	17.797m
27) SA Decachlor...	9.108	8.128	35890406	47900792	20.635m	12.747m#
Target Compounds						
7) B delta-BHC	4.800	4.305	8803329	5111323	5.098m	0.609m#
12) B 4,4'-DDE	6.226	5.426	8164806	29927311	4.668m	4.907m
13) MA Dieldrin	6.378	5.565	2198669	20480357	1.224m	3.329m#

(f)=RT Delta > 1/2 Window (#)=Amounts differ by > 25% (m)=manual int.

Data Path : Z:\pestpcbsrv\HPCHEM1\ECD_D\Data\PD081524\
 Data File : PD084456.D
 Signal(s) : Signal #1: ECD1A.ch Signal #2: ECD2B.ch
 Acq On : 15 Aug 2024 13:02
 Operator : AR\AJ
 Sample : P3555-12
 Misc :
 ALS Vial : 16 Sample Multiplier: 1

Integration File signal 1: autoint1.e
 Integration File signal 2: autoint2.e
 Quant Time: Aug 16 01:43:00 2024
 Quant Method : Z:\pestpcbsrv\HPCHEM1\ECD_D\Method\PD081224CLP.M
 Quant Title : GC Extractables
 QLast Update : Mon Aug 12 16:40:36 2024
 Response via : Initial Calibration
 Integrator: ChemStation

Volume Inj. : 1 µl
 Signal #1 Phase : ZB-MR1 Signal #2 Phase: ZB-MR2
 Signal #1 Info : 30M x 0.32mm x 0.5 Signal #2 Info : 30M x 0.32mm x 0.25µm



Instrument : ECD_D
 ClientSampled : DCXW1
 Manual Integrations APPROVED
 Reviewed By :Abdul Mirza 08/16/2024
 Supervised By :Ankita Jodhani 08/16/2024