

Data Path : Z:\pestpcbsrv\HPCHEM1\ECD_D\Data\PD081524\
 Data File : PD084452.D
 Signal(s) : Signal #1: ECD1A.ch Signal #2: ECD2B.ch
 Acq On : 15 Aug 2024 12:09
 Operator : AR\AJ
 Sample : P3555-08
 Misc :
 ALS Vial : 12 Sample Multiplier: 1

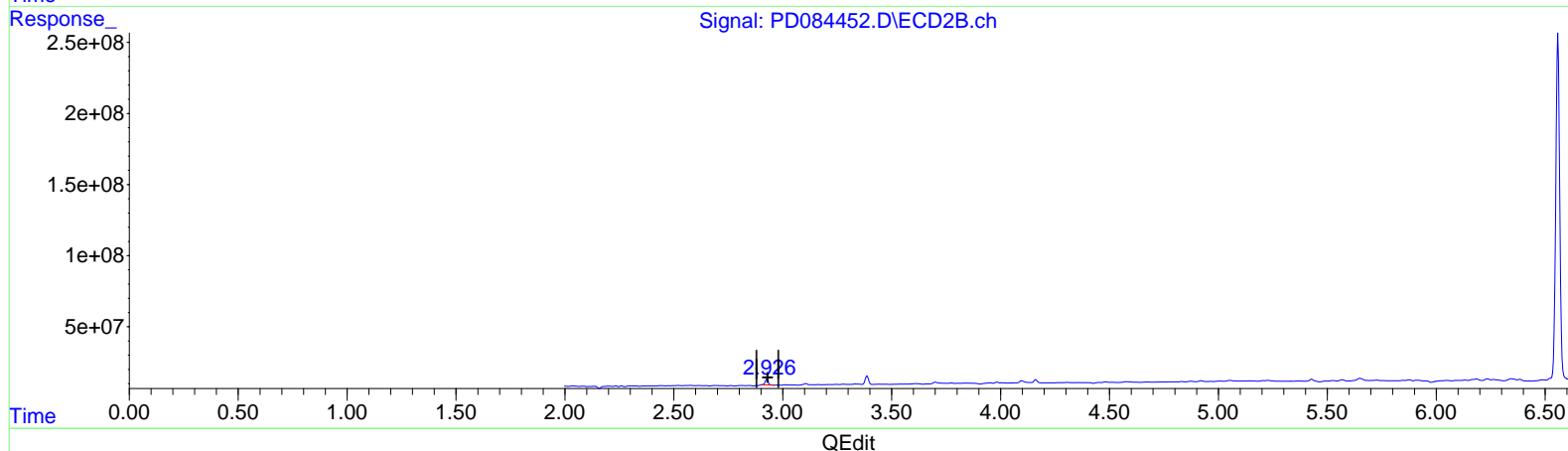
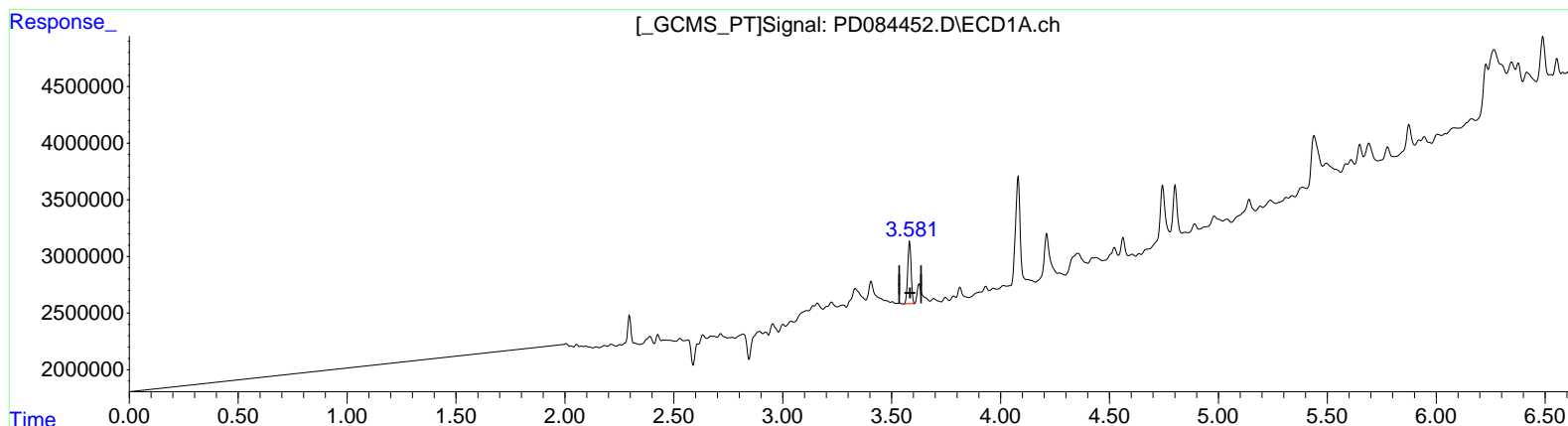
Instrument :
 ECD_D
 ClientSampleId :
 DCXV7

Manual Integrations APPROVED

Reviewed By : Abdul Mirza 08/16/2024
 Supervised By : Ankita Jodhani 08/16/2024

Integration File signal 1: autoint1.e
 Integration File signal 2: autoint2.e
 Quant Time: Aug 16 01:41:41 2024
 Quant Method : Z:\pestpcbsrv\HPCHEM1\ECD_D\Method\PD081224CLP.M
 Quant Title : GC Extractables
 QLast Update : Mon Aug 12 16:40:36 2024
 Response via : Initial Calibration
 Integrator: ChemStation

Volume Inj. : 1 µl
 Signal #1 Phase : ZB-MR1 Signal #2 Phase: ZB-MR2
 Signal #1 Info : 30M x 0.32mm x 0.5 Signal #2 Info : 30M x 0.32mm x 0.25µm



(1) Tetrachloro-m-xylene (SA)
 3.583min 7.044 ng/ml
 response 5905776

(1) Tetrachloro-m-xylene #2 (SA)
 2.927min 7.646 ng/ml
 response 40249962

Data Path : Z:\pestpcbsrv\HPCHEM1\ECD_D\Data\PD081524\
 Data File : PD084452.D
 Signal(s) : Signal #1: ECD1A.ch Signal #2: ECD2B.ch
 Acq On : 15 Aug 2024 12:09
 Operator : AR\AJ
 Sample : P3555-08
 Misc :
 ALS Vial : 12 Sample Multiplier: 1

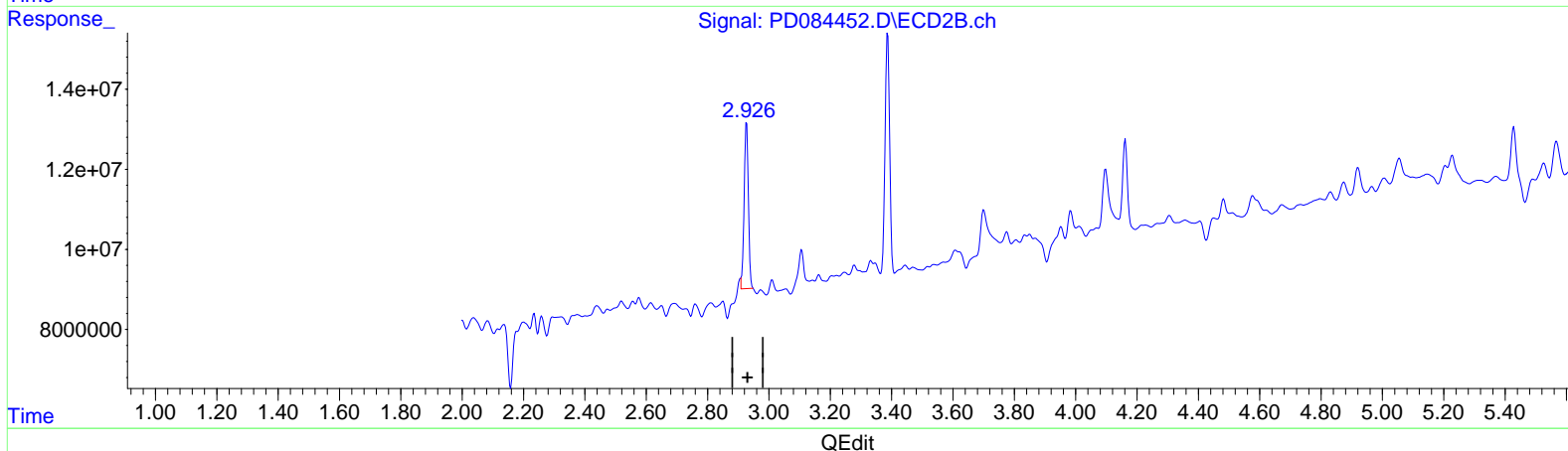
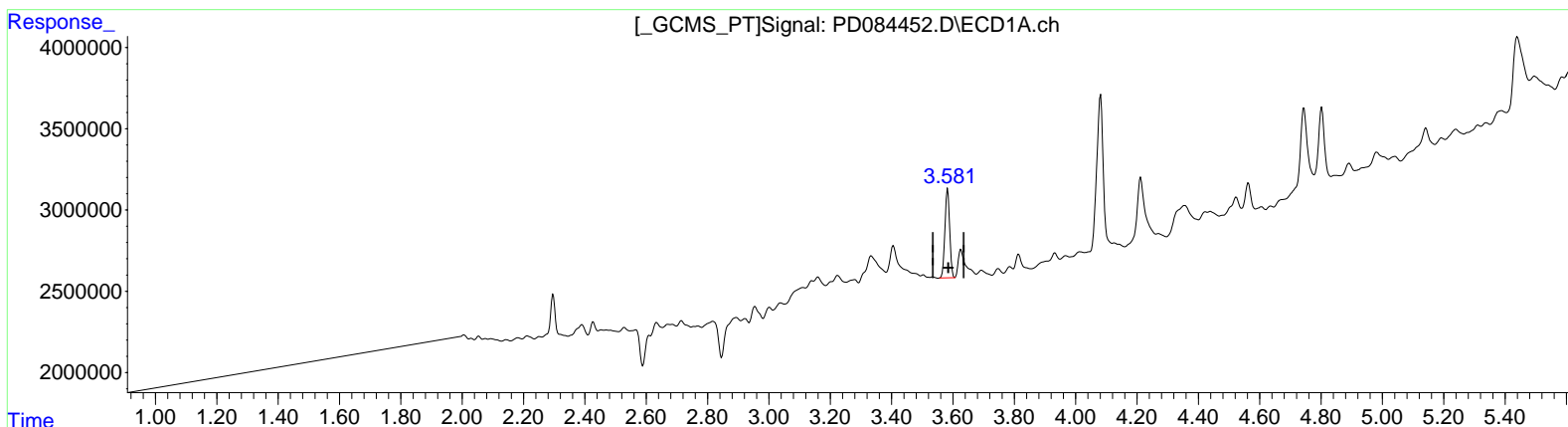
Instrument :
 ECD_D
 ClientSampleId :
 DCXV7

Manual Integrations APPROVED

Reviewed By : Abdul Mirza 08/16/2024
 Supervised By : Ankita Jodhani 08/16/2024

Integration File signal 1: autoint1.e
 Integration File signal 2: autoint2.e
 Quant Time: Aug 16 01:41:41 2024
 Quant Method : Z:\pestpcbsrv\HPCHEM1\ECD_D\Method\PD081224CLP.M
 Quant Title : GC Extractables
 QLast Update : Mon Aug 12 16:40:36 2024
 Response via : Initial Calibration
 Integrator: ChemStation

Volume Inj. : 1 µl
 Signal #1 Phase : ZB-MR1 Signal #2 Phase: ZB-MR2
 Signal #1 Info : 30M x 0.32mm x 0.5 Signal #2 Info : 30M x 0.32mm x 0.25µm



(1) Tetrachloro-m-xylene (SA)

3.583min 7.044 ng/ml

response 5905776

(1) Tetrachloro-m-xylene #2 (SA)

2.926min 7.593 ng/ml m

response 39968626

Data Path : Z:\pestpcbsrv\HPCHEM1\ECD_D\Data\PD081524\
Data File : PD084452.D
Signal(s) : Signal #1: ECD1A.ch Signal #2: ECD2B.ch
Acq On : 15 Aug 2024 12:09
Operator : AR\AJ
Sample : P3555-08
Misc :
ALS Vial : 12 Sample Multiplier: 1

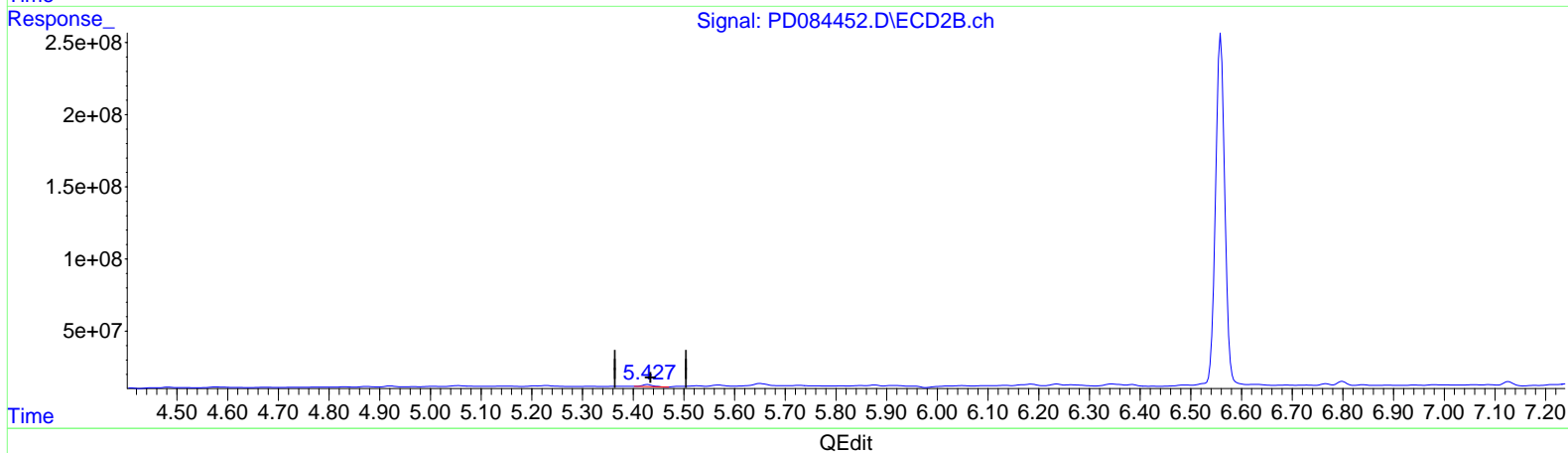
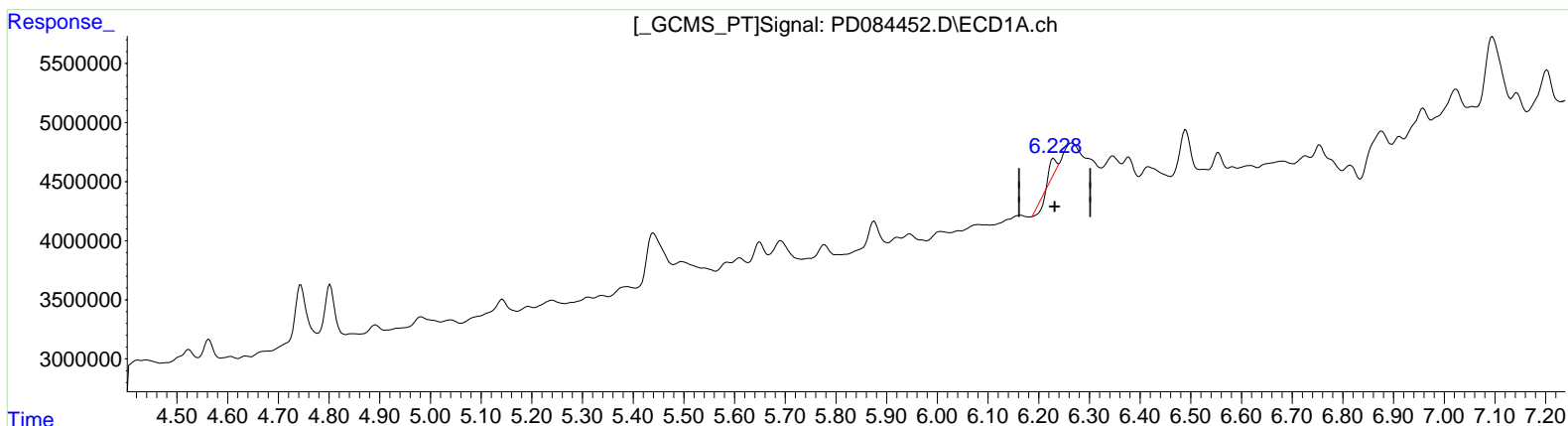
Instrument :
ECD_D
ClientSampleId :
DCXV7

Manual IntegrationsAPPROVED

Reviewed By :Abdul Mirza 08/16/2024
Supervised By :Ankita Jodhani 08/16/2024

Integration File signal 1: autoint1.e
Integration File signal 2: autoint2.e
Quant Time: Aug 16 01:41:41 2024
Quant Method : Z:\pestpcbsrv\HPCHEM1\ECD_D\Method\PD081224CLP.M
Quant Title : GC Extractables
QLast Update : Mon Aug 12 16:40:36 2024
Response via : Initial Calibration
Integrator: ChemStation

Volume Inj. : 1 µl
Signal #1 Phase : ZB-MR1 Signal #2 Phase: ZB-MR2
Signal #1 Info : 30M x 0.32mm x0.5 Signal #2 Info : 30M x 0.32mm x 0.25µm



(12) 4,4'-DDE (B)
6.230min 0.079 ng/ml
response 137572

(12) 4,4'-DDE #2 (B)
5.428min 3.191 ng/ml
response 19458512

Data Path : Z:\pestpcbsrv\HPCHEM1\ECD_D\Data\PD081524\
 Data File : PD084452.D
 Signal(s) : Signal #1: ECD1A.ch Signal #2: ECD2B.ch
 Acq On : 15 Aug 2024 12:09
 Operator : AR\AJ
 Sample : P3555-08
 Misc :
 ALS Vial : 12 Sample Multiplier: 1

Instrument :

ECD_D

ClientSampleId :

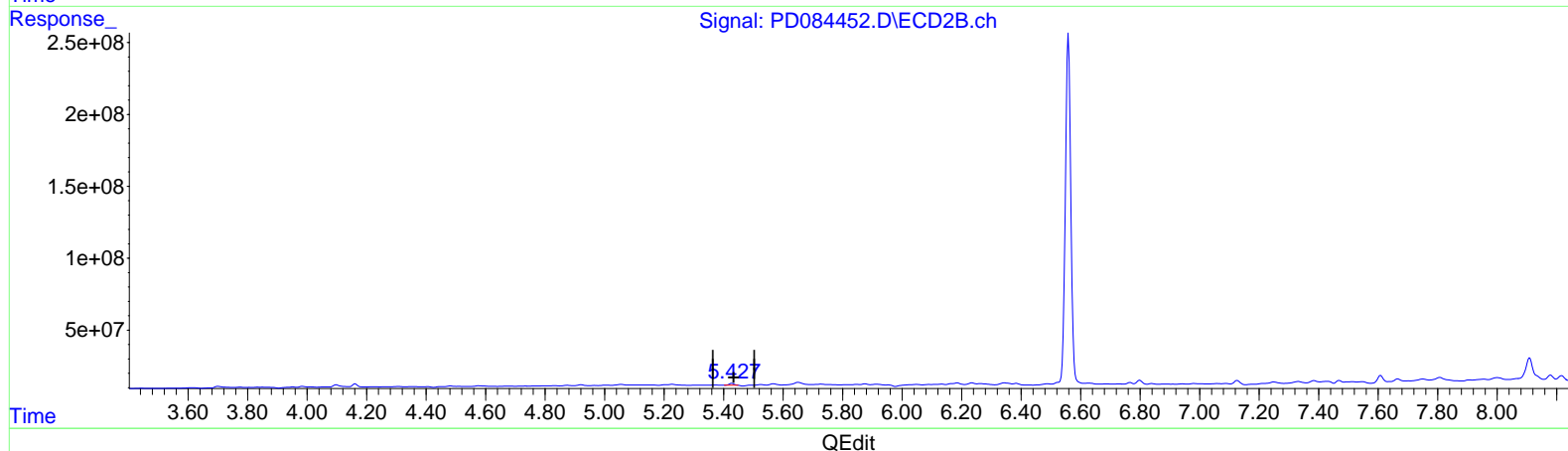
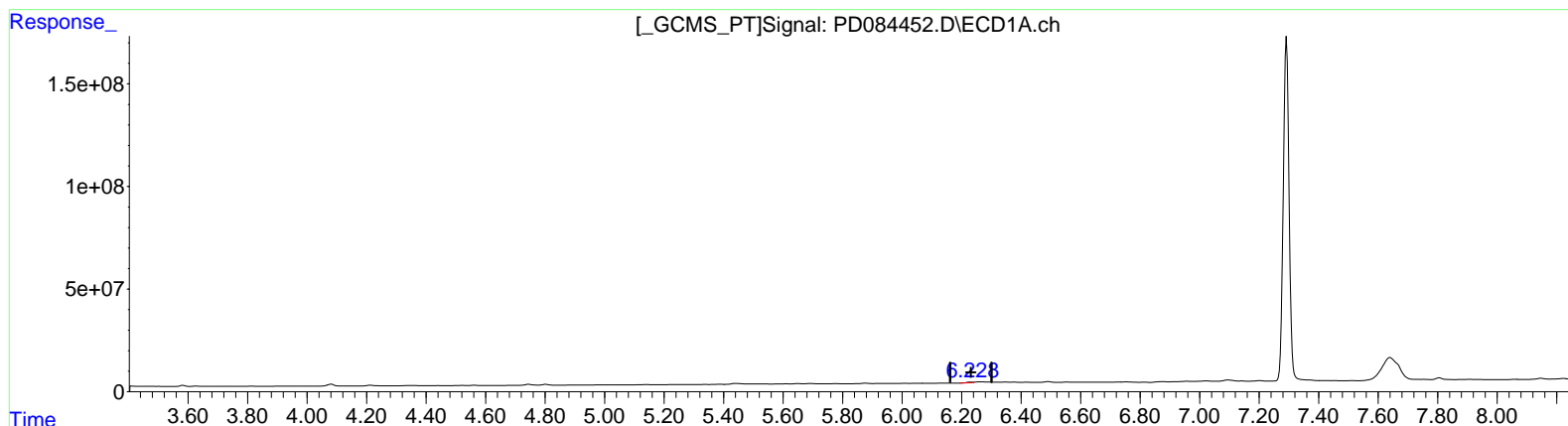
DCXV7

Manual IntegrationsAPPROVED

Reviewed By :Abdul Mirza 08/16/2024
 Supervised By :Ankita Jodhani 08/16/2024

Integration File signal 1: autoint1.e
 Integration File signal 2: autoint2.e
 Quant Time: Aug 16 01:41:41 2024
 Quant Method : Z:\pestpcbsrv\HPCHEM1\ECD_D\Method\PD081224CLP.M
 Quant Title : GC Extractables
 QLast Update : Mon Aug 12 16:40:36 2024
 Response via : Initial Calibration
 Integrator: ChemStation

Volume Inj. : 1 µl
 Signal #1 Phase : ZB-MR1 Signal #2 Phase: ZB-MR2
 Signal #1 Info : 30M x 0.32mm x0.5 Signal #2 Info : 30M x 0.32mm x 0.25µm



(12) 4,4'-DDE (B)
 6.228min 2.477 ng/ml m
 response 4333294

(12) 4,4'-DDE #2 (B)
 5.427min 2.545 ng/ml m
 response 15517744

Data Path : Z:\pestpcbsrv\HPCHEM1\ECD_D\Data\PD081524\
Data File : PD084452.D
Signal(s) : Signal #1: ECD1A.ch Signal #2: ECD2B.ch
Acq On : 15 Aug 2024 12:09
Operator : AR\AJ
Sample : P3555-08
Misc :
ALS Vial : 12 Sample Multiplier: 1

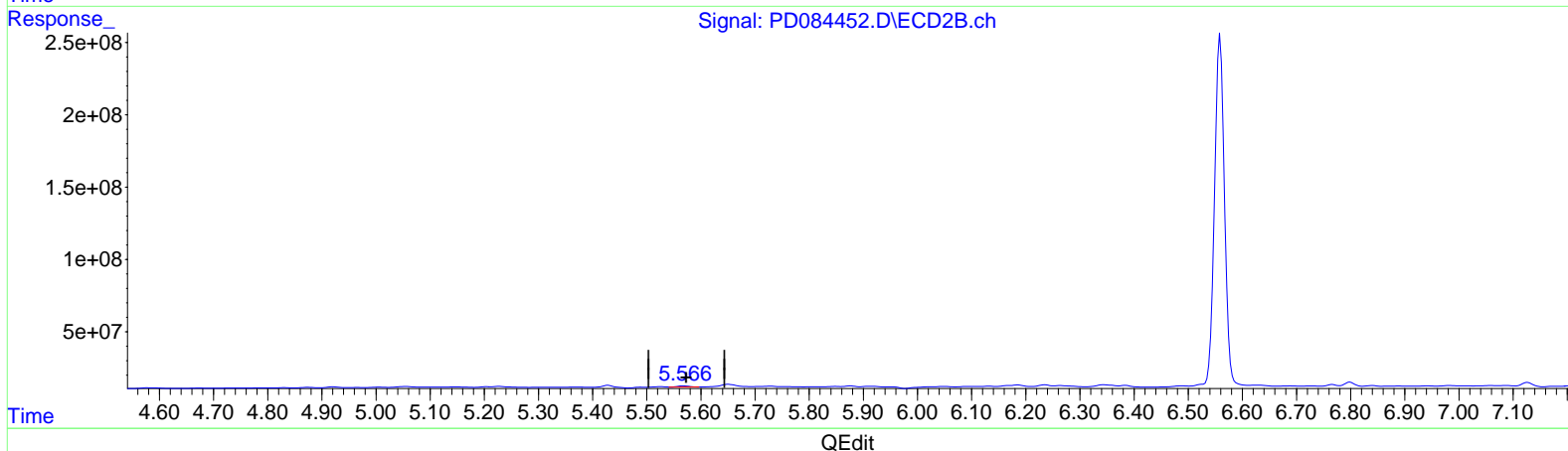
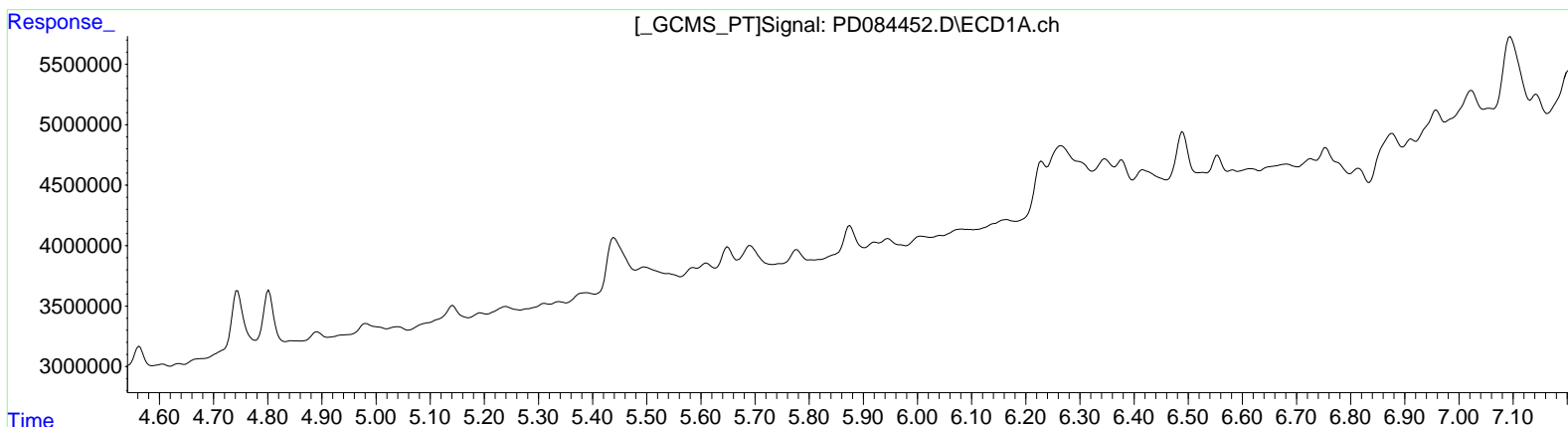
Instrument :
ECD_D
ClientSampleId :
DCXV7

Manual Integrations APPROVED

Reviewed By : Abdul Mirza 08/16/2024
Supervised By : Ankita Jodhani 08/16/2024

Integration File signal 1: autoint1.e
Integration File signal 2: autoint2.e
Quant Time: Aug 16 01:41:41 2024
Quant Method : Z:\pestpcbsrv\HPCHEM1\ECD_D\Method\PD081224CLP.M
Quant Title : GC Extractables
QLast Update : Mon Aug 12 16:40:36 2024
Response via : Initial Calibration
Integrator: ChemStation

Volume Inj. : 1 µl
Signal #1 Phase : ZB-MR1 Signal #2 Phase: ZB-MR2
Signal #1 Info : 30M x 0.32mm x 0.5 Signal #2 Info : 30M x 0.32mm x 0.25µm



(13) Dieldrin (MA)
0.000min 0.000 ng/ml
response 0

(13) Dieldrin #2 (MA)
5.568min 1.896 ng/ml
response 11660988

Data Path : Z:\pestpcbsrv\HPCHEM1\ECD_D\Data\PD081524\
Data File : PD084452.D
Signal(s) : Signal #1: ECD1A.ch Signal #2: ECD2B.ch
Acq On : 15 Aug 2024 12:09
Operator : AR\AJ
Sample : P3555-08
Misc :
ALS Vial : 12 Sample Multiplier: 1

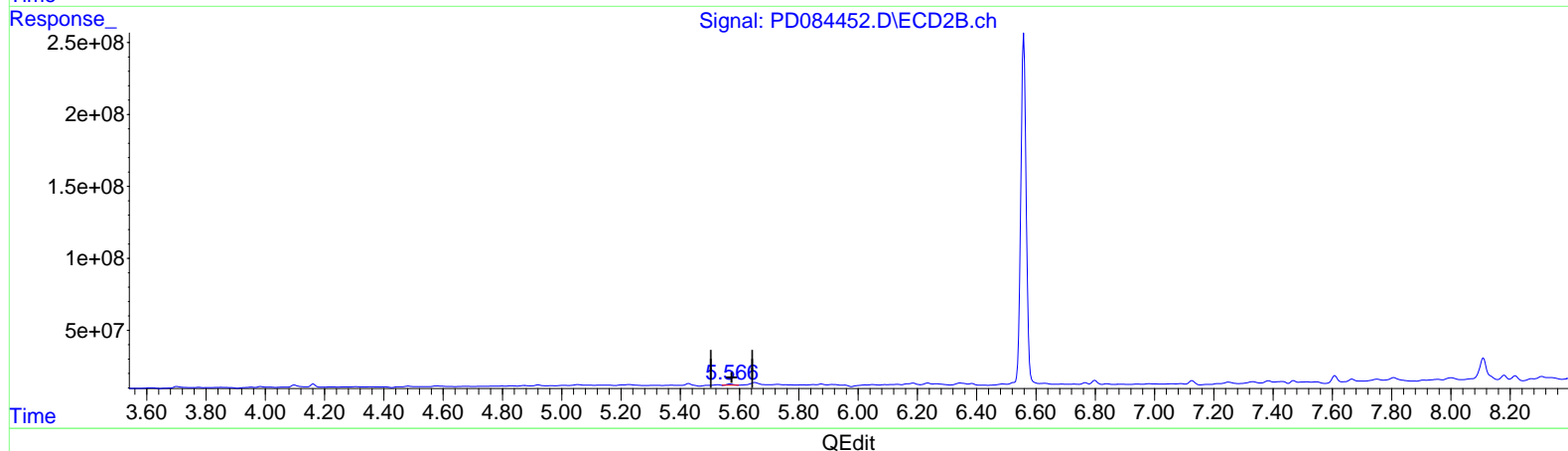
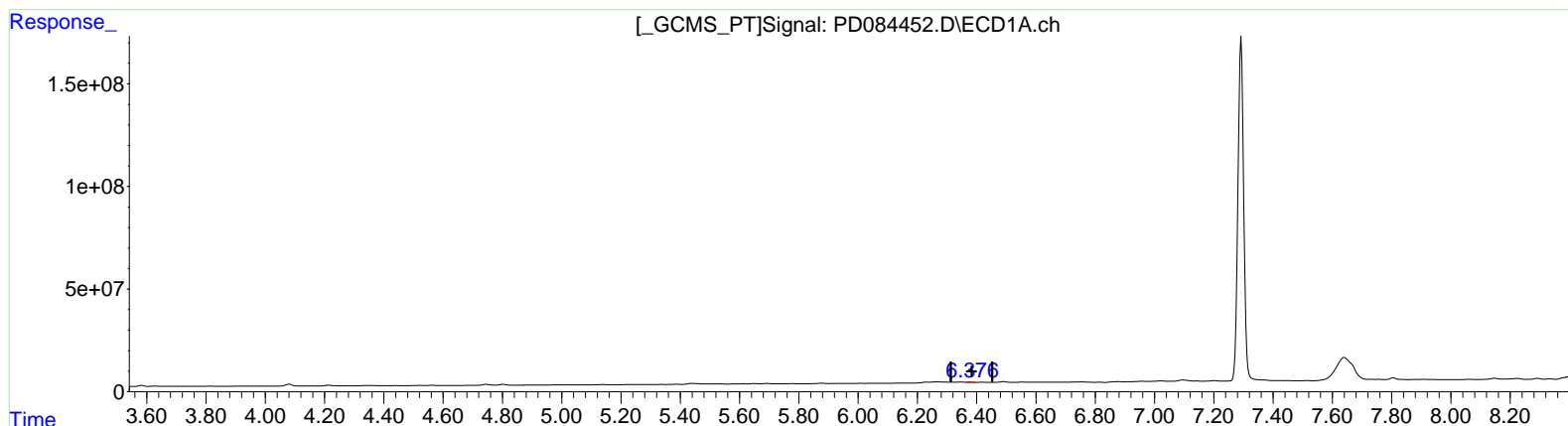
Instrument :
ECD_D
ClientSampleId :
DCXV7

Manual Integrations APPROVED

Reviewed By : Abdul Mirza 08/16/2024
Supervised By : Ankita Jodhani 08/16/2024

Integration File signal 1: autoint1.e
Integration File signal 2: autoint2.e
Quant Time: Aug 16 01:41:41 2024
Quant Method : Z:\pestpcbsrv\HPCHEM1\ECD_D\Method\PD081224CLP.M
Quant Title : GC Extractables
QLast Update : Mon Aug 12 16:40:36 2024
Response via : Initial Calibration
Integrator: ChemStation

Volume Inj. : 1 µl
Signal #1 Phase : ZB-MR1 Signal #2 Phase: ZB-MR2
Signal #1 Info : 30M x 0.32mm x 0.5 Signal #2 Info : 30M x 0.32mm x 0.25µm



(13) Dieldrin (MA)
6.376min 1.110 ng/ml m
response 1994171

(13) Dieldrin #2 (MA)
5.568min 1.896 ng/ml
response 11660988

Data Path : Z:\pestpcbsrv\HPCHEM1\ECD_D\Data\PD081524\
Data File : PD084452.D
Signal(s) : Signal #1: ECD1A.ch Signal #2: ECD2B.ch
Acq On : 15 Aug 2024 12:09
Operator : AR\AJ
Sample : P3555-08
Misc :
ALS Vial : 12 Sample Multiplier: 1

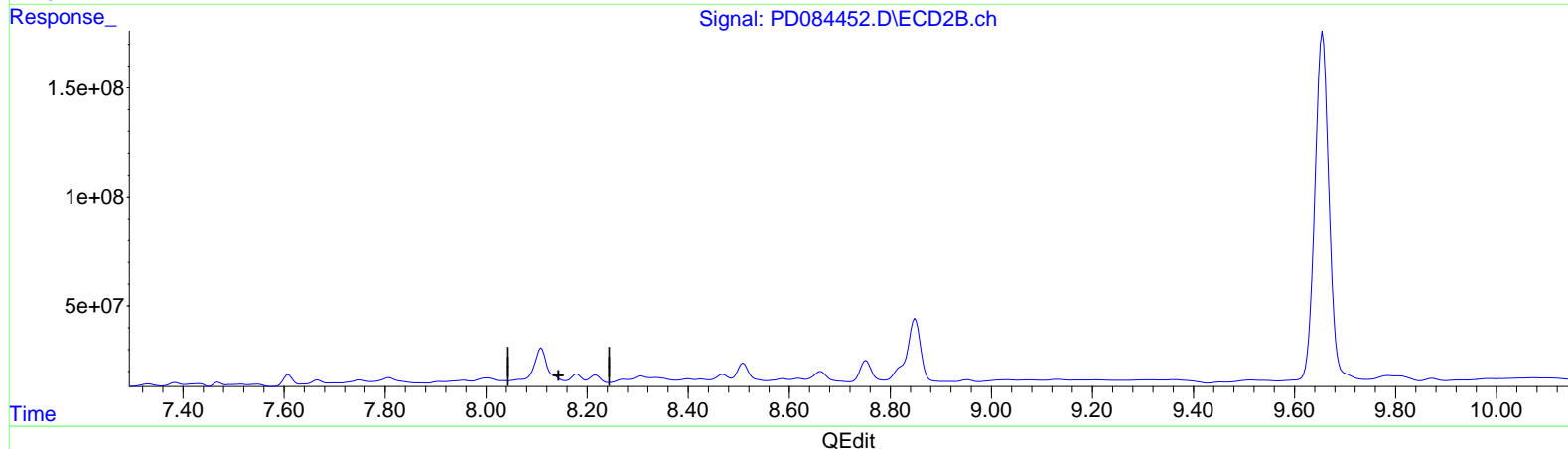
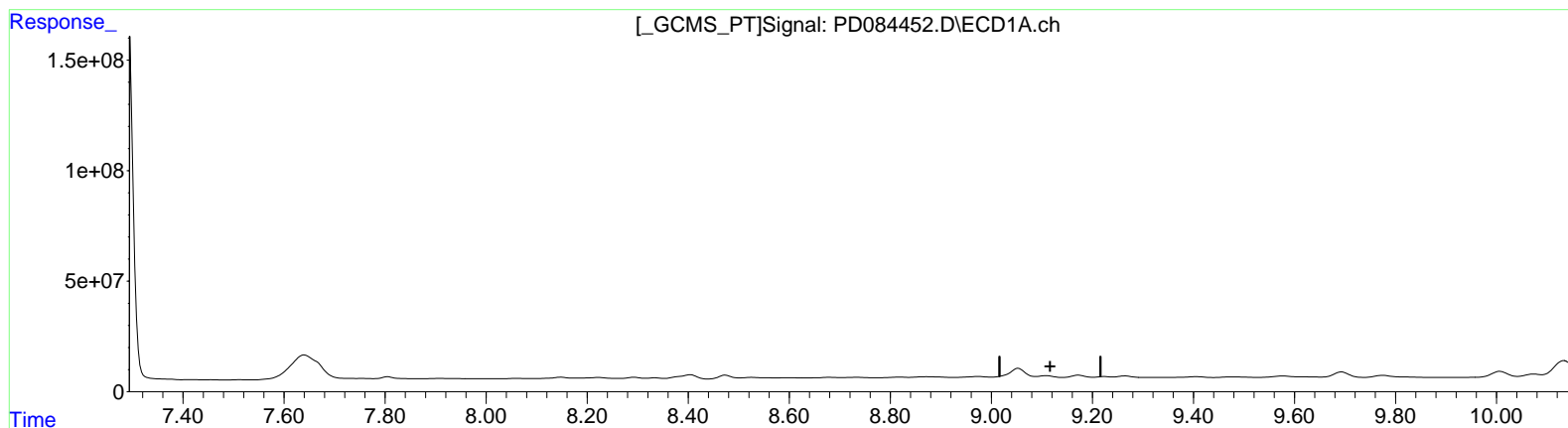
Instrument :
ECD_D
ClientSampleId :
DCXV7

Manual IntegrationsAPPROVED

Reviewed By :Abdul Mirza 08/16/2024
Supervised By :Ankita Jodhani 08/16/2024

Integration File signal 1: autoint1.e
Integration File signal 2: autoint2.e
Quant Time: Aug 16 01:41:41 2024
Quant Method : Z:\pestpcbsrv\HPCHEM1\ECD_D\Method\PD081224CLP.M
Quant Title : GC Extractables
QLast Update : Mon Aug 12 16:40:36 2024
Response via : Initial Calibration
Integrator: ChemStation

Volume Inj. : 1 µl
Signal #1 Phase : ZB-MR1 Signal #2 Phase: ZB-MR2
Signal #1 Info : 30M x 0.32mm x0.5 Signal #2 Info : 30M x 0.32mm x 0.25µm



(27) Decachlorobiphenyl (SA)

9.109min -13.798 ng/ml

response -23998871

(27) Decachlorobiphenyl #2 (SA)

0.000min 0.000 ng/ml

response 0

Data Path : Z:\pestpcbsrv\HPCHEM1\ECD_D\Data\PD081524\
Data File : PD084452.D
Signal(s) : Signal #1: ECD1A.ch Signal #2: ECD2B.ch
Acq On : 15 Aug 2024 12:09
Operator : AR\AJ
Sample : P3555-08
Misc :
ALS Vial : 12 Sample Multiplier: 1

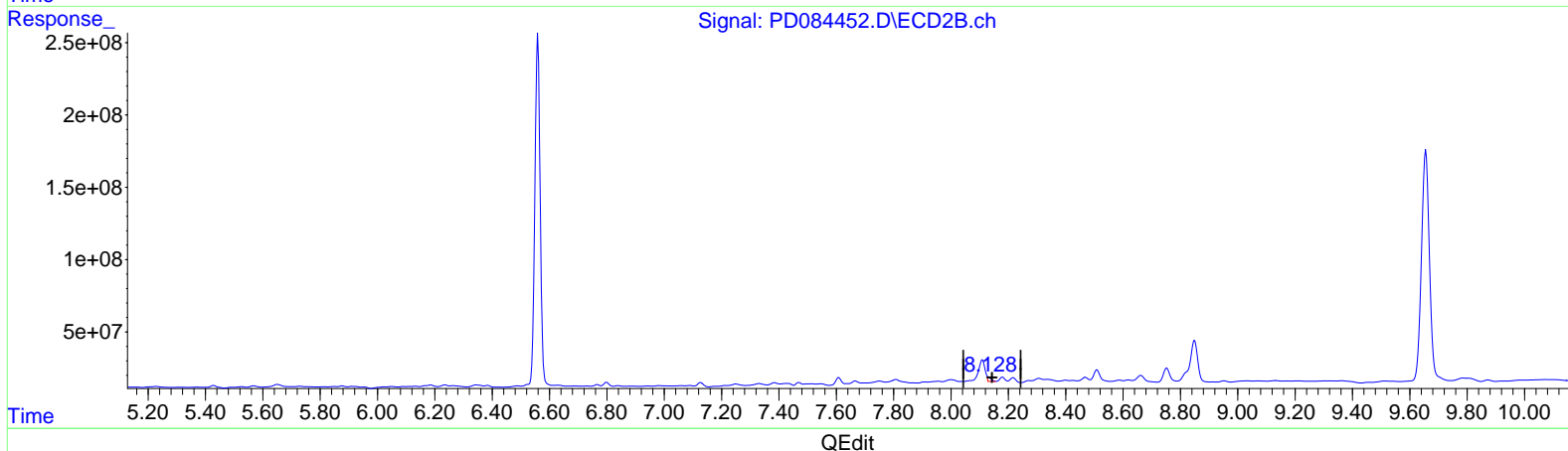
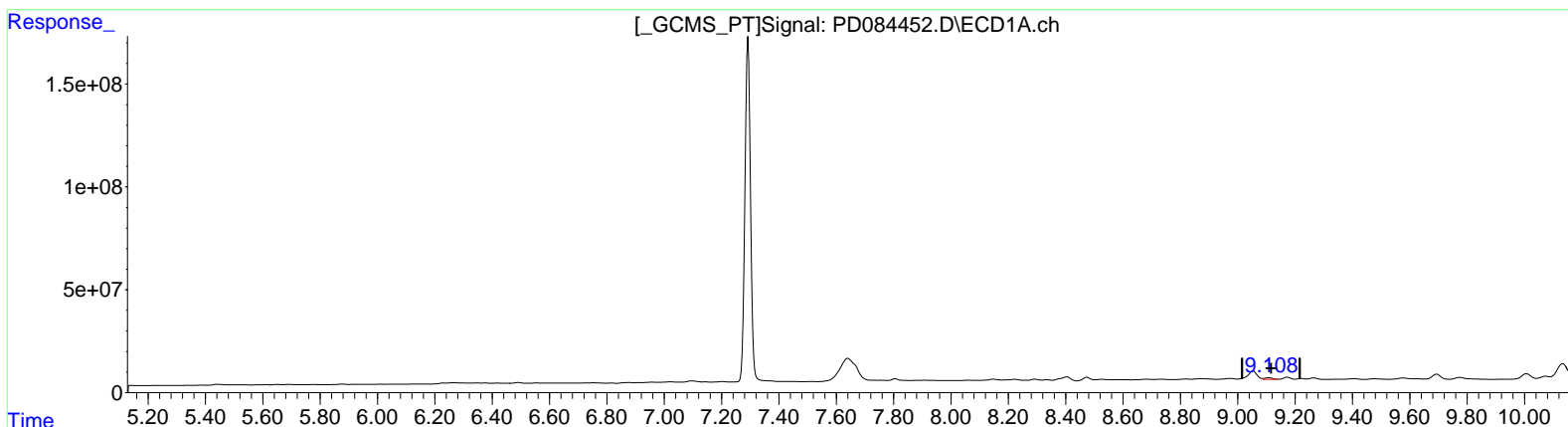
Instrument :
ECD_D
ClientSampleId :
DCXV7

Manual IntegrationsAPPROVED

Reviewed By :Abdul Mirza 08/16/2024
Supervised By :Ankita Jodhani 08/16/2024

Integration File signal 1: autoint1.e
Integration File signal 2: autoint2.e
Quant Time: Aug 16 01:41:41 2024
Quant Method : Z:\pestpcbsrv\HPCHEM1\ECD_D\Method\PD081224CLP.M
Quant Title : GC Extractables
QLast Update : Mon Aug 12 16:40:36 2024
Response via : Initial Calibration
Integrator: ChemStation

Volume Inj. : 1 µl
Signal #1 Phase : ZB-MR1 Signal #2 Phase: ZB-MR2
Signal #1 Info : 30M x 0.32mm x0.5 Signal #2 Info : 30M x 0.32mm x 0.25µm



(27) Decachlorobiphenyl (SA)
9.108min 8.325 ng/ml m
response 14479689

(27) Decachlorobiphenyl #2 (SA)
8.128min 3.593 ng/ml m
response 13503264