

Data Path : Z:\pestpcbsrv\HPCHEM1\ECD\_D\Data\PD081722\  
 Data File : PD071609.D  
 Signal(s) : Signal #1: ECD1A.ch Signal #2: ECD2B.ch  
 Acq On : 17 Aug 2022 11:06  
 Operator : AR\AJ  
 Sample : N4028-03 10X  
 Misc :  
 ALS Vial : 9 Sample Multiplier: 1

Instrument :  
 ECD\_D  
 ClientSampleId :  
 C0QB3

Integration File signal 1: autoint1.e  
 Integration File signal 2: autoint2.e  
 Quant Time: Aug 18 00:13:19 2022  
 Quant Method : Z:\pestpcbsrv\HPCHEM1\ECD\_D\Method\PD081022CLP-TCLP.M  
 Quant Title : GC Extractables  
 QLast Update : Wed Aug 10 22:43:30 2022  
 Response via : Initial Calibration  
 Integrator: ChemStation

Volume Inj. : 1 µl  
 Signal #1 Phase : ZB-MR2 Signal #2 Phase: ZB-MR1  
 Signal #1 Info : 30M x 0.32mm x0.2 Signal #2 Info : 30M x 0.32mm x 0.50µm

Compound	RT#1	RT#2	Resp#1	Resp#2	ng/ml	ng/ml
-----						
System Monitoring Compounds						
1) SA Tetrachlo...	2.806	3.564	54484687	580.4E6	19.241	18.734
27) SA Decachlor...	8.000	9.090	102.1E6	379.3E6	40.025	40.023

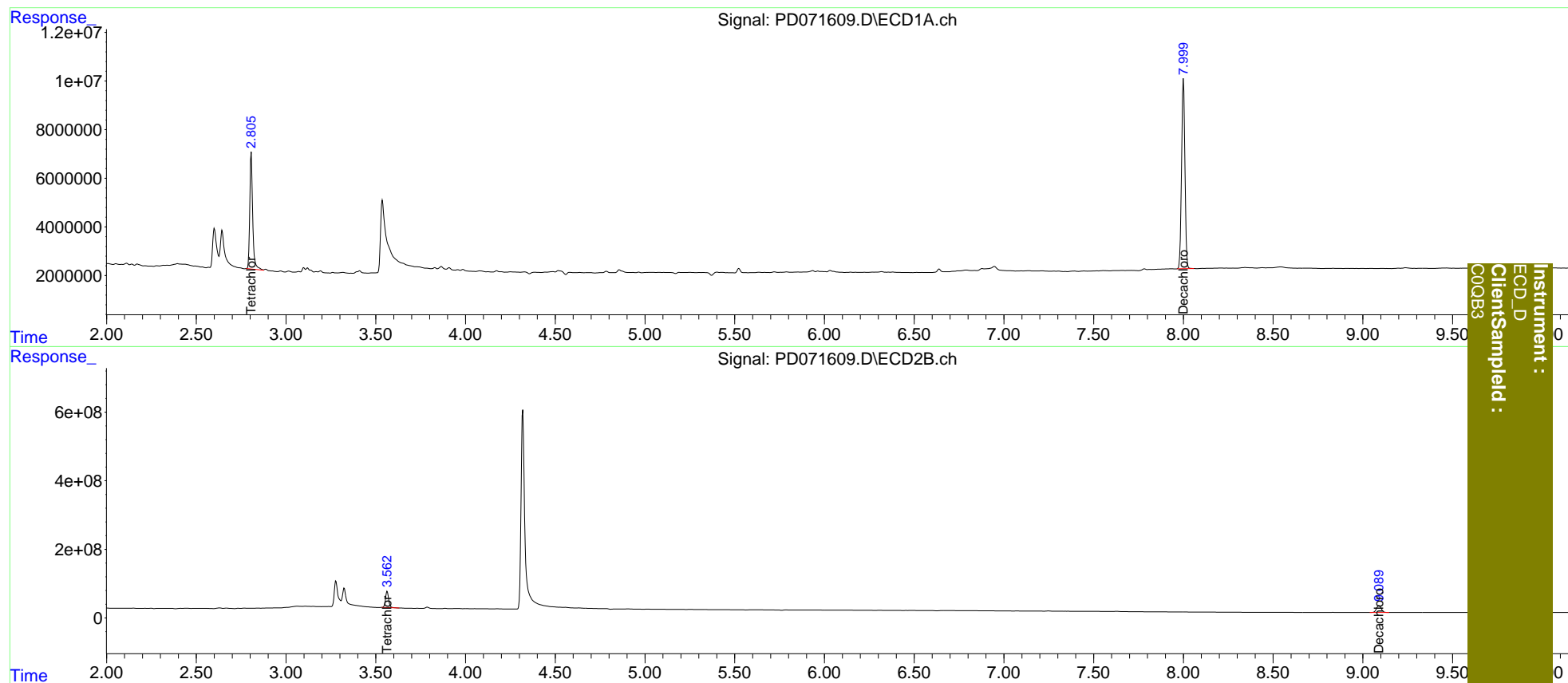
Target Compounds

-----  
 (f)=RT Delta > 1/2 Window (#)=Amounts differ by > 25% (m)=manual int.

Data Path : Z:\pestpcbsrv\HPCHEM1\ECD\_D\Data\PD081722\  
 Data File : PD071609.D  
 Signal(s) : Signal #1: ECD1A.ch Signal #2: ECD2B.ch  
 Acq On : 17 Aug 2022 11:06  
 Operator : AR\AJ  
 Sample : N4028-03 10X  
 Misc :  
 ALS Vial : 9 Sample Multiplier: 1

Integration File signal 1: autoint1.e  
 Integration File signal 2: autoint2.e  
 Quant Time: Aug 18 00:13:19 2022  
 Quant Method : Z:\pestpcbsrv\HPCHEM1\ECD\_D\Method\PD081022CLP-TCLP.M  
 Quant Title : GC Extractables  
 QLast Update : Wed Aug 10 22:43:30 2022  
 Response via : Initial Calibration  
 Integrator: ChemStation

Volume Inj. : 1 µl  
 Signal #1 Phase : ZB-MR2 Signal #2 Phase: ZB-MR1  
 Signal #1 Info : 30M x 0.32mm x0.2 Signal #2 Info : 30M x 0.32mm x 0.50µm



Instrument :  
 ECD\_D  
 ClientSampled :  
 C00B3