

Data Path : Z:\pestpcbsrv\HPCHEM1\ECD_D\Data\PD081821\
 Data File : PD065041.D
 Signal(s) : Signal #1: ECD1A.ch Signal #2: ECD2B.ch
 Acq On : 19 Aug 2021 01:21
 Operator : AR\AJ
 Sample : M3362-02MS
 Misc :
 ALS Vial : 26 Sample Multiplier: 1

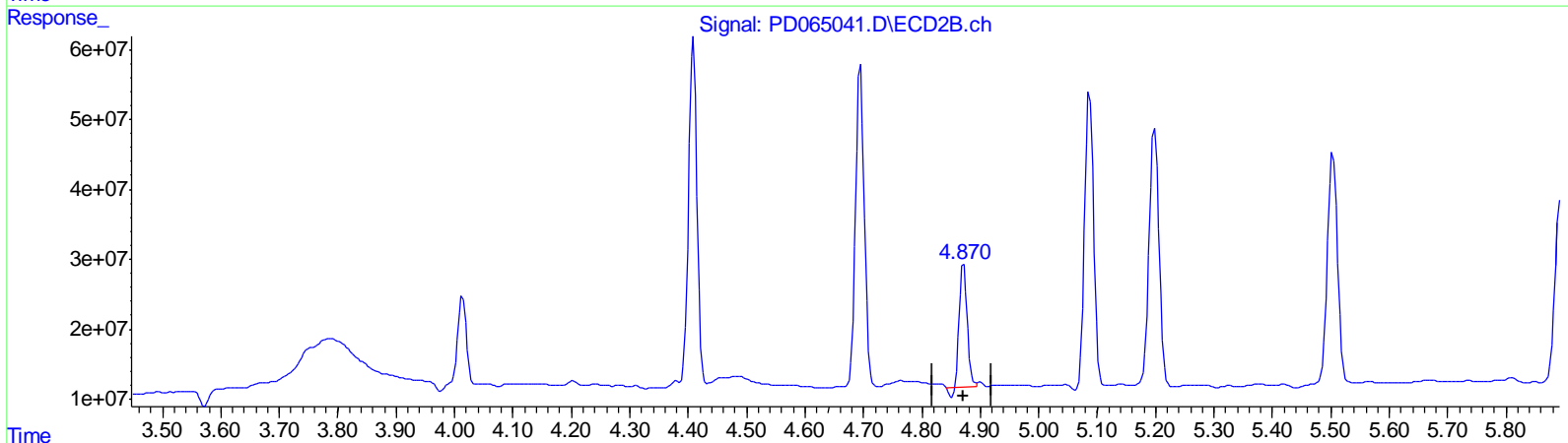
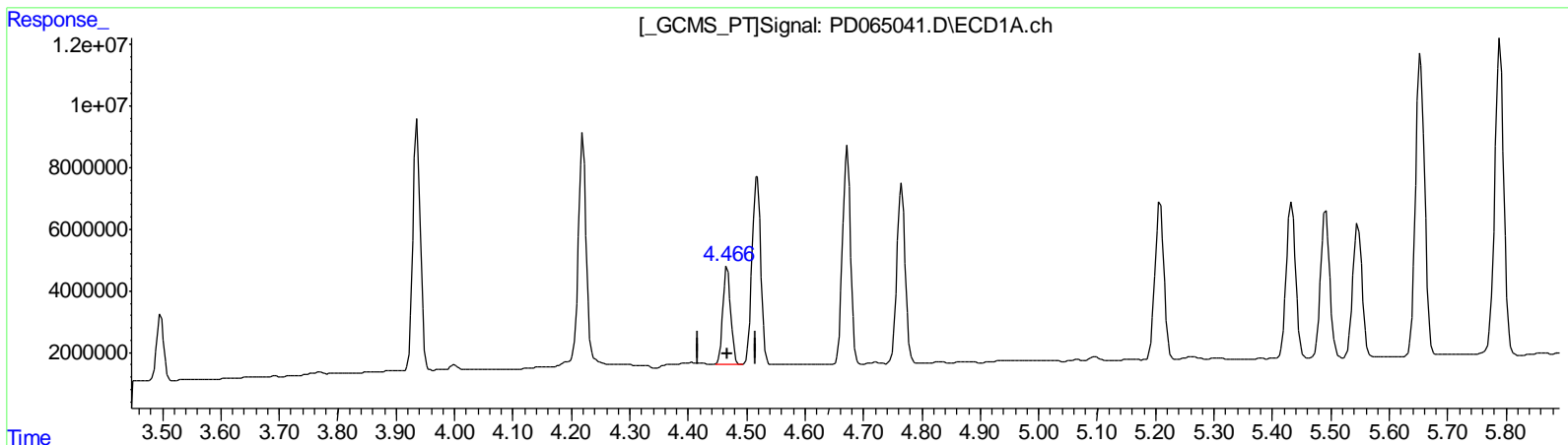
Instrument :
 ECD_D
 ClientSampleID :
 JMXD6MS

Manual Integrations
 APPROVED

mohammad
 8/19/2021 6:06:32 PM

Integration File signal 1: autoint1.e
 Integration File signal 2: autoint2.e
 Quant Time: Aug 19 06:33:36 2021
 Quant Method : Z:\pestpcbsrv\HPCHEM1\ECD_D\Method\PD081721CLP.M
 Quant Title : GC Extractables
 QLast Update : Wed Aug 18 02:57:59 2021
 Response via : Initial Calibration
 Integrator: ChemStation

Volume Inj. : 1 µl
 Signal #1 Phase : ZB-MR2 Signal #2 Phase: ZB-MR1
 Signal #1 Info : 30M x 0.32mm x0.2 Signal #2 Info : 30M x 0.32mm x 0.50µm



QEdit

(6) beta-BHC (B)
 4.467min 48.047 ng/ml
 response 29894112

(6) beta-BHC #2 (B)
 4.871min 31.333 ng/ml
 response 164791773

(+) = Expected Retention Time

Data Path : Z:\pestpcbsrv\HPCHEM1\ECD_D\Data\PD081821\
 Data File : PD065041.D
 Signal(s) : Signal #1: ECD1A.ch Signal #2: ECD2B.ch
 Acq On : 19 Aug 2021 01:21
 Operator : AR\AJ
 Sample : M3362-02MS
 Misc :
 ALS Vial : 26 Sample Multiplier: 1

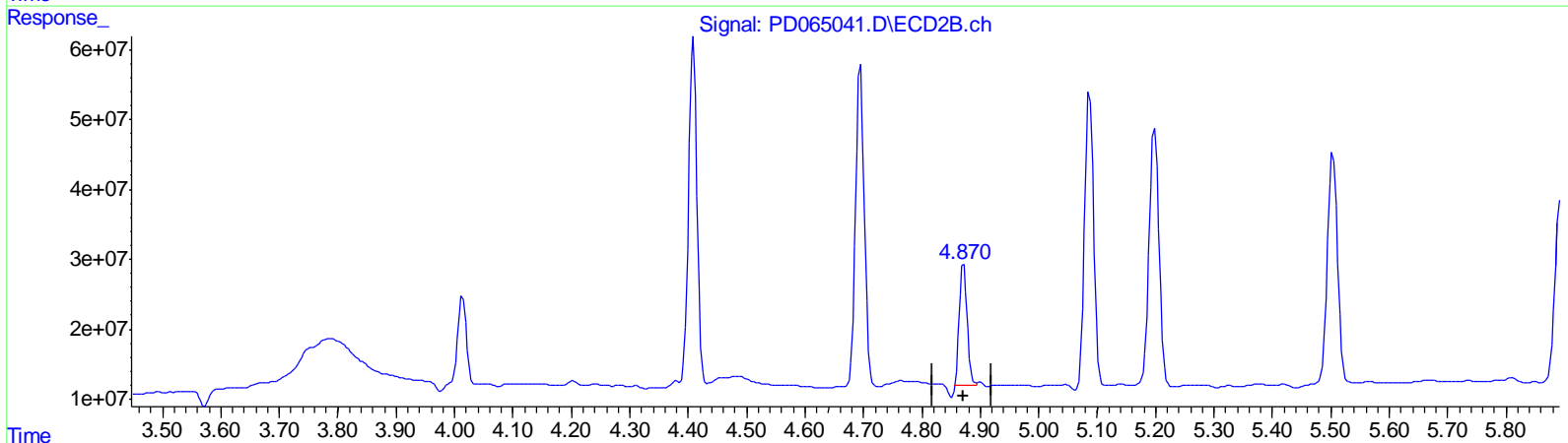
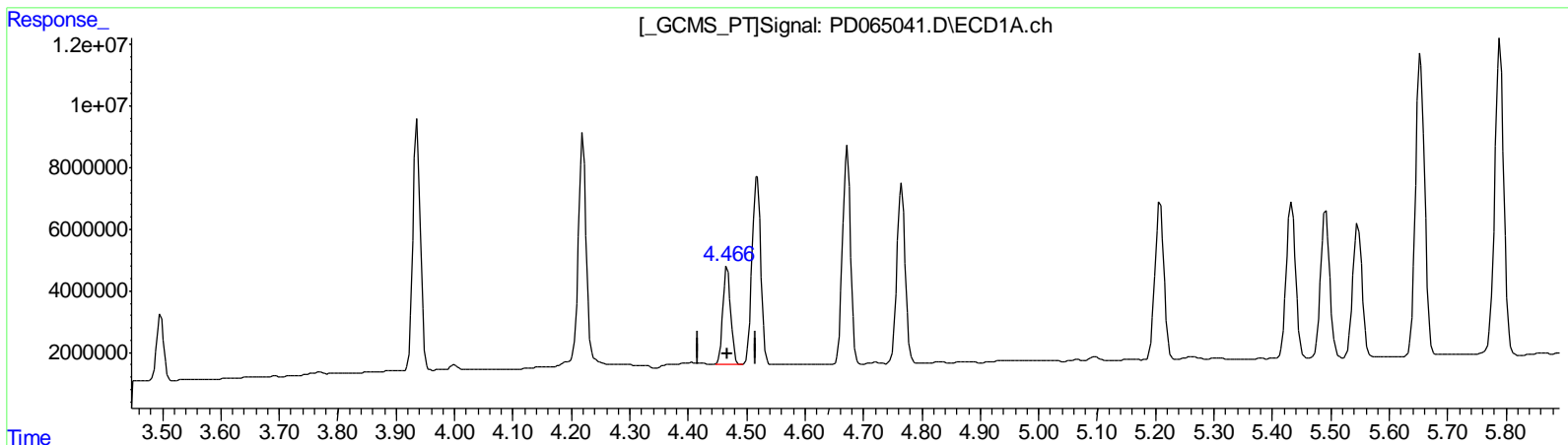
Instrument :
 ECD_D
 ClientSampleID :
 JMXD6MS

Manual Integrations
 APPROVED

mohammad
 8/19/2021 6:06:32 PM

Integration File signal 1: autoint1.e
 Integration File signal 2: autoint2.e
 Quant Time: Aug 19 06:33:36 2021
 Quant Method : Z:\pestpcbsrv\HPCHEM1\ECD_D\Method\PD081721CLP.M
 Quant Title : GC Extractables
 QLast Update : Wed Aug 18 02:57:59 2021
 Response via : Initial Calibration
 Integrator: ChemStation

Volume Inj. : 1 µl
 Signal #1 Phase : ZB-MR2 Signal #2 Phase: ZB-MR1
 Signal #1 Info : 30M x 0.32mm x0.2 Signal #2 Info : 30M x 0.32mm x 0.50µm



QEdit

(6) beta-BHC (B)
 4.467min 48.047 ng/ml
 response 29894112

(6) beta-BHC #2 (B)
 4.870min 31.638 ng/ml m
 response 166398113

(+) = Expected Retention Time

Data Path : Z:\pestpcbsrv\HPCHEM1\ECD_D\Data\PD081821\
 Data File : PD065041.D
 Signal(s) : Signal #1: ECD1A.ch Signal #2: ECD2B.ch
 Acq On : 19 Aug 2021 01:21
 Operator : AR\AJ
 Sample : M3362-02MS
 Misc :
 ALS Vial : 26 Sample Multiplier: 1

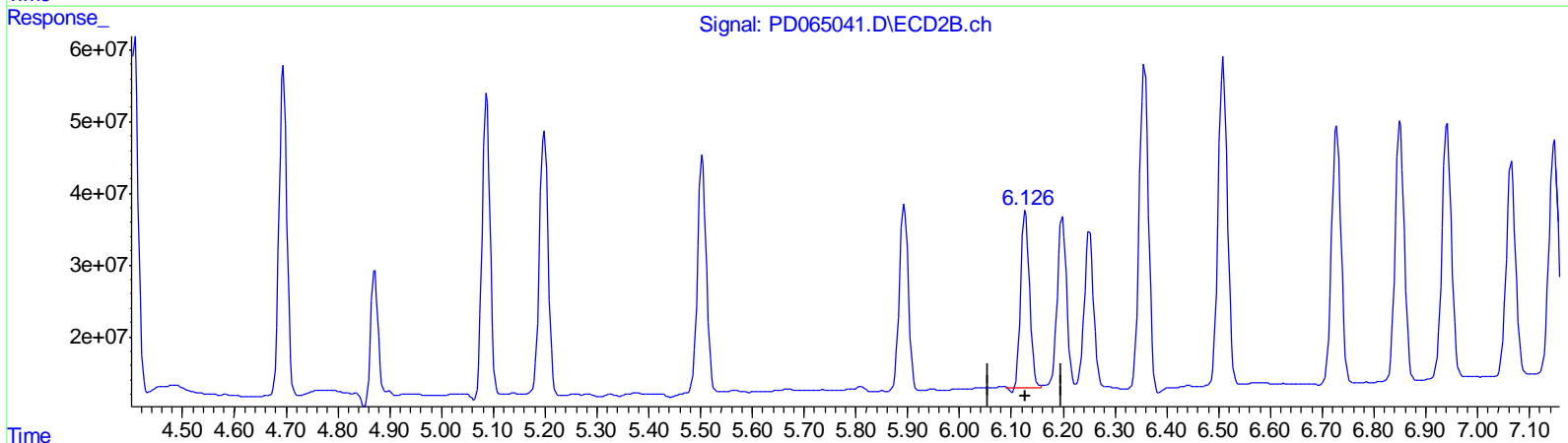
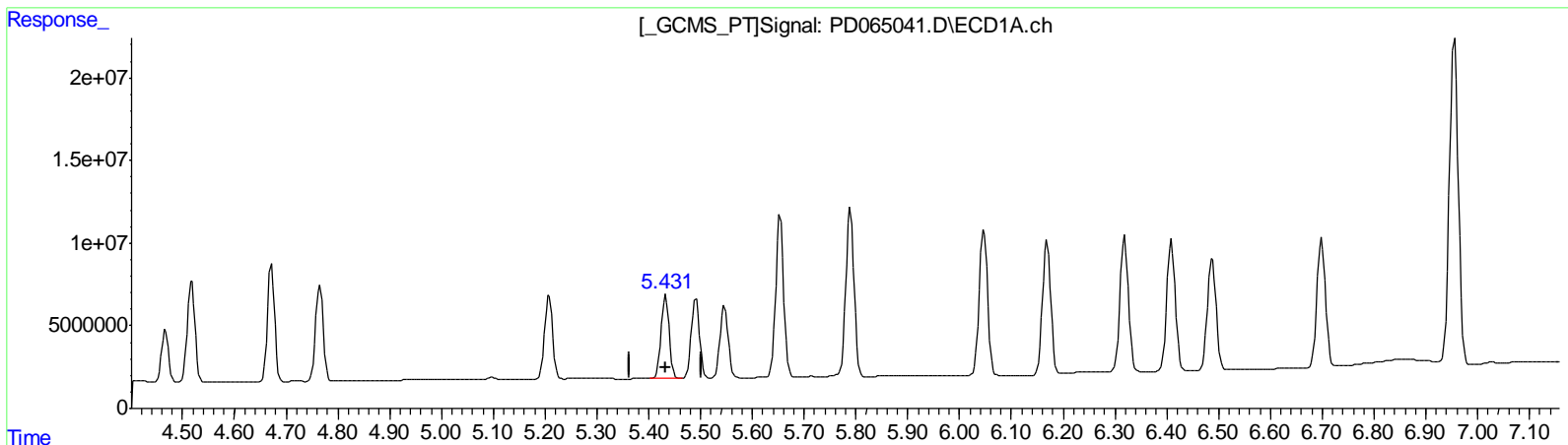
Instrument :
 ECD_D
 ClientSampleID :
 JMXD6MS

Manual Integrations
 APPROVED

mohammad
 8/19/2021 6:06:32 PM

Integration File signal 1: autoint1.e
 Integration File signal 2: autoint2.e
 Quant Time: Aug 19 06:33:36 2021
 Quant Method : Z:\pestpcbsrv\HPCHEM1\ECD_D\Method\PD081721CLP.M
 Quant Title : GC Extractables
 QLast Update : Wed Aug 18 02:57:59 2021
 Response via : Initial Calibration
 Integrator: ChemStation

Volume Inj. : 1 µl
 Signal #1 Phase : ZB-MR2 Signal #2 Phase: ZB-MR1
 Signal #1 Info : 30M x 0.32mm x0.2 Signal #2 Info : 30M x 0.32mm x 0.50µm



QEdit

(10) trans-Chlordane (B)
 5.433min 48.934 ng/ml
 response 54873610

(10) trans-Chlordane #2 (B)
 6.127min 38.013 ng/ml
 response 292852356

(+) = Expected Retention Time

Data Path : Z:\pestpcbsrv\HPCHEM1\ECD_D\Data\PD081821\
 Data File : PD065041.D
 Signal(s) : Signal #1: ECD1A.ch Signal #2: ECD2B.ch
 Acq On : 19 Aug 2021 01:21
 Operator : AR\AJ
 Sample : M3362-02MS
 Misc :
 ALS Vial : 26 Sample Multiplier: 1

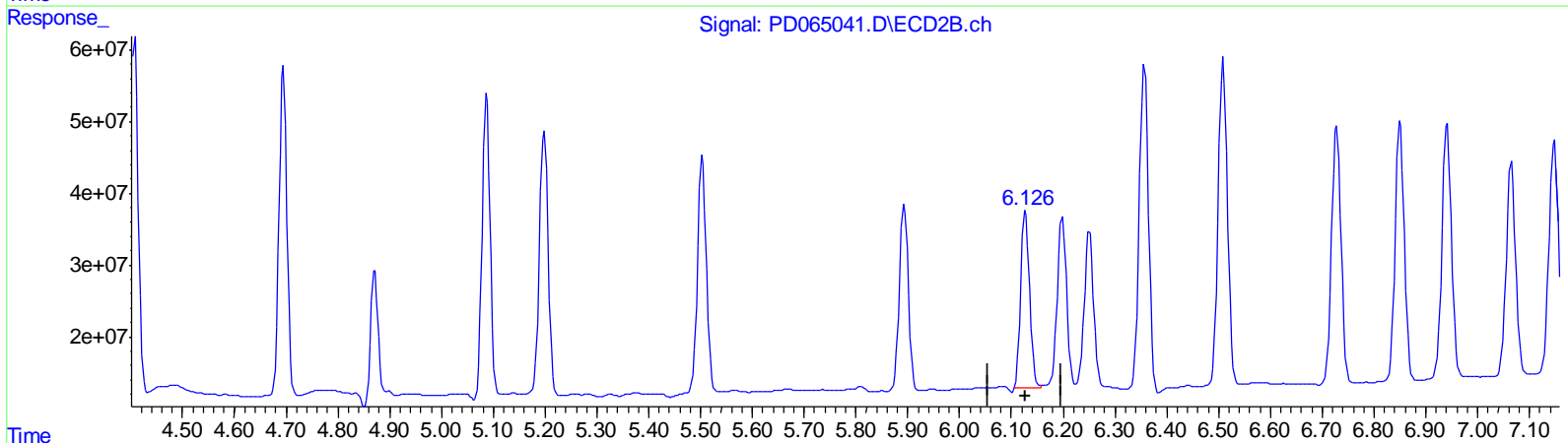
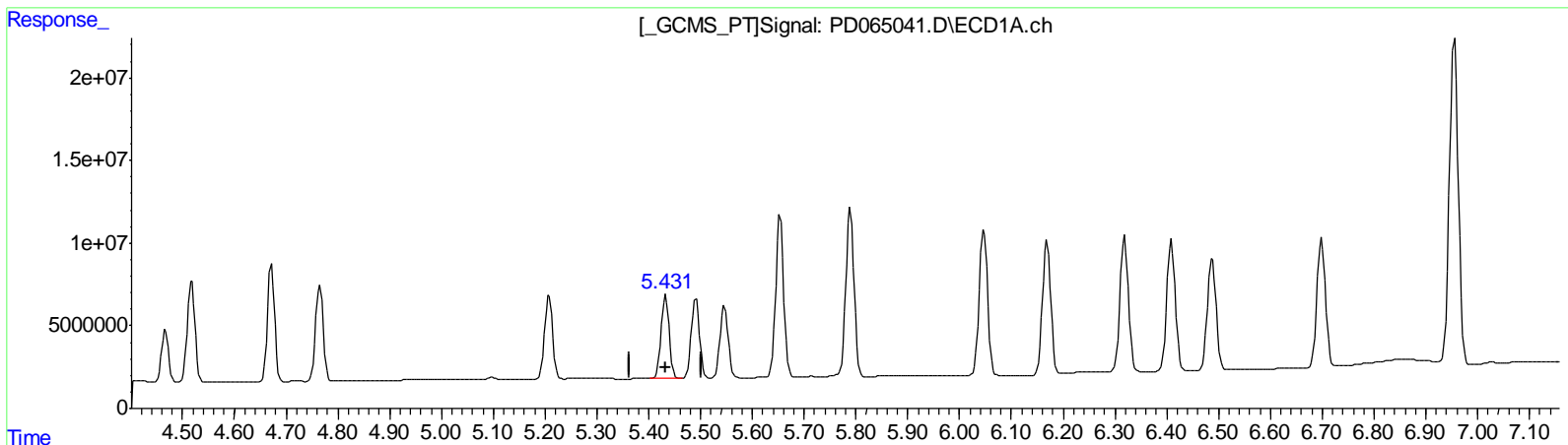
Instrument :
 ECD_D
 ClientSampleID :
 JMXD6MS

Manual Integrations
 APPROVED

mohammad
 8/19/2021 6:06:32 PM

Integration File signal 1: autoint1.e
 Integration File signal 2: autoint2.e
 Quant Time: Aug 19 06:33:36 2021
 Quant Method : Z:\pestpcbsrv\HPCHEM1\ECD_D\Method\PD081721CLP.M
 Quant Title : GC Extractables
 QLast Update : Wed Aug 18 02:57:59 2021
 Response via : Initial Calibration
 Integrator: ChemStation

Volume Inj. : 1 µl
 Signal #1 Phase : ZB-MR2 Signal #2 Phase: ZB-MR1
 Signal #1 Info : 30M x 0.32mm x0.2 Signal #2 Info : 30M x 0.32mm x 0.50µm



QEdit

(10) trans-Chlordane (B)
 5.433min 48.934 ng/ml
 response 54873610

(10) trans-Chlordane #2 (B)
 6.126min 38.287 ng/ml m
 response 294964988

(+) = Expected Retention Time

Data Path : Z:\pestpcbsrv\HPCHEM1\ECD_D\Data\PD081821\
 Data File : PD065041.D
 Signal(s) : Signal #1: ECD1A.ch Signal #2: ECD2B.ch
 Acq On : 19 Aug 2021 01:21
 Operator : AR\AJ
 Sample : M3362-02MS
 Misc :
 ALS Vial : 26 Sample Multiplier: 1

Instrument :
 ECD_D
 ClientSampleID :
 JMXD6MS

Manual Integrations
 APPROVED

mohammad
 8/19/2021 6:06:32 PM

Integration File signal 1: autoint1.e
 Integration File signal 2: autoint2.e
 Quant Time: Aug 19 06:33:36 2021
 Quant Method : Z:\pestpcbsrv\HPCHEM1\ECD_D\Method\PD081721CLP.M
 Quant Title : GC Extractables
 QLast Update : Wed Aug 18 02:57:59 2021
 Response via : Initial Calibration
 Integrator: ChemStation

Volume Inj. : 1 µl
 Signal #1 Phase : ZB-MR2 Signal #2 Phase: ZB-MR1
 Signal #1 Info : 30M x 0.32mm x0.2 Signal #2 Info : 30M x 0.32mm x 0.50µm

Compound	RT#1	RT#2	Resp#1	Resp#2	ng/ml	ng/ml

System Monitoring Compounds						
1) SA Tetrachlo...	3.497	4.014	19200912	141.8E6	20.037	18.496
27) SA Decachlor...	8.242	9.084	27703561	93254272	28.024	20.469 #
Target Compounds						
2) A alpha-BHC	3.936	4.409	72408603	493.5E6	55.361	46.248
3) MA gamma-BHC...	4.219	4.695	69793467	481.0E6	53.281	48.050
4) MA Heptachlor	4.518	5.198	62662895	426.2E6	52.956	46.293
5) MB Aldrin	4.766	5.504	59776360	392.7E6	51.424	43.607
6) B beta-BHC	4.467	4.870	29894112	166.4E6	48.047	31.638m#
7) B delta-BHC	4.672	5.087	66856030	449.1E6	54.279	45.838
8) B Heptachlo...	5.208	5.894	55171557	311.8E6	49.671	39.782
9) A Endosulfan I	5.547	6.251	47491615	282.5E6	47.276	41.806
10) B trans-Chl...	5.433	6.126	54873610	295.0E6	48.934	38.287m
11) B cis-Chlor...	5.491	6.199	53014716	302.7E6	48.208	40.901
12) B 4,4'-DDE	5.654	6.357	106.4E6	563.9E6	105.236	80.959
13) MA Dieldrin	5.789	6.509	113.3E6	566.2E6	106.997	81.415
14) MA Endrin	6.047	6.728	98199972	454.1E6	106.243	83.118
15) B Endosulfa...	6.319	6.941	93464719	456.1E6	101.634	81.637
16) A 4,4'-DDD	6.169	6.851	89683497	449.0E6	106.860	84.809
17) MA 4,4'-DDT	6.409	7.148	91651242	423.6E6	103.829	79.194
18) B Endrin al...	6.488	7.065	79313369	377.8E6	98.638	78.202
19) B Endosulfa...	6.699	7.288	90780663	413.5E6	94.603	75.592
20) A Methoxychlor	6.955	7.608	234.1E6	945.2E6	513.503	384.464 #
21) B Endrin ke...	7.194	7.762	108.7E6	444.1E6	96.945	71.963 #

AJ
 08/23/21

(f)=RT Delta > 1/2 Window (#)=Amounts differ by > 25% (m)=manual int.