

Data Path : Z:\pestpcbsrv\HPCHEM1\ECD_D\Data\PD081821\
 Data File : PD065025.D
 Signal(s) : Signal #1: ECD1A.ch Signal #2: ECD2B.ch
 Acq On : 18 Aug 2021 16:57
 Operator : AR\AJ
 Sample : INDB302
 Misc :
 ALS Vial : 29 Sample Multiplier: 1

Instrument :
 ECD_D
ClientSampled :
 INDB3132

Manual Integrations
APPROVED
 mohammad
 8/23/2021 2:51:35 PM

Integration File signal 1: autoint1.e
 Integration File signal 2: autoint2.e
 Quant Time: Aug 19 06:51:57 2021
 Quant Method : Z:\pestpcbsrv\HPCHEM1\ECD_D\Method\PD081721CLP.M
 Quant Title : GC Extractables
 QLast Update : Wed Aug 18 02:57:59 2021
 Response via : Initial Calibration
 Integrator: ChemStation

Volume Inj. : 1 µl
 Signal #1 Phase : ZB-MR1 Signal #2 Phase: ZB-MR1
 Signal #1 Info : 30M x 0.32mm x0.2 Signal #2 Info : 30M x 0.32mm x 0.50µm

	Compound	RT#1	RT#2	Resp#1	Resp#2	ng/ml	ng/ml

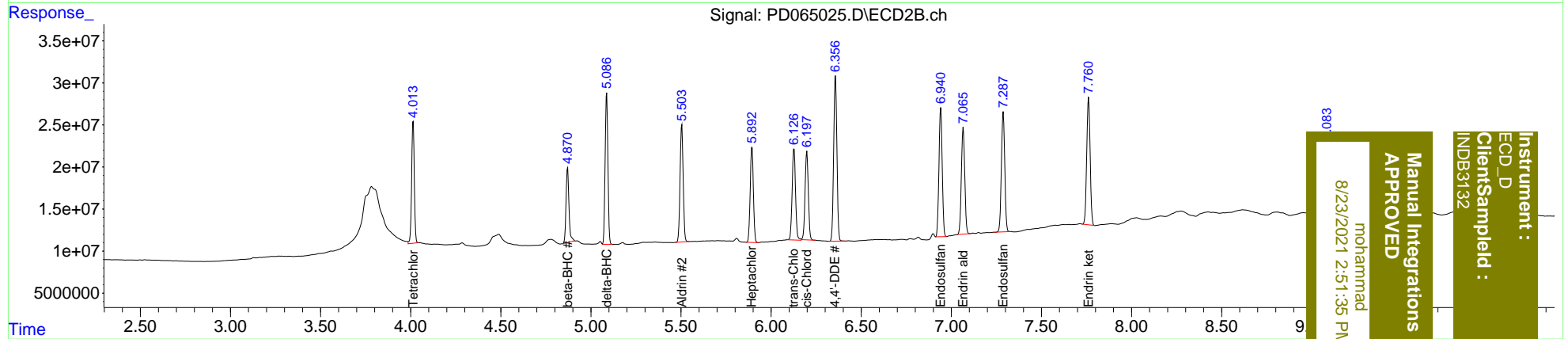
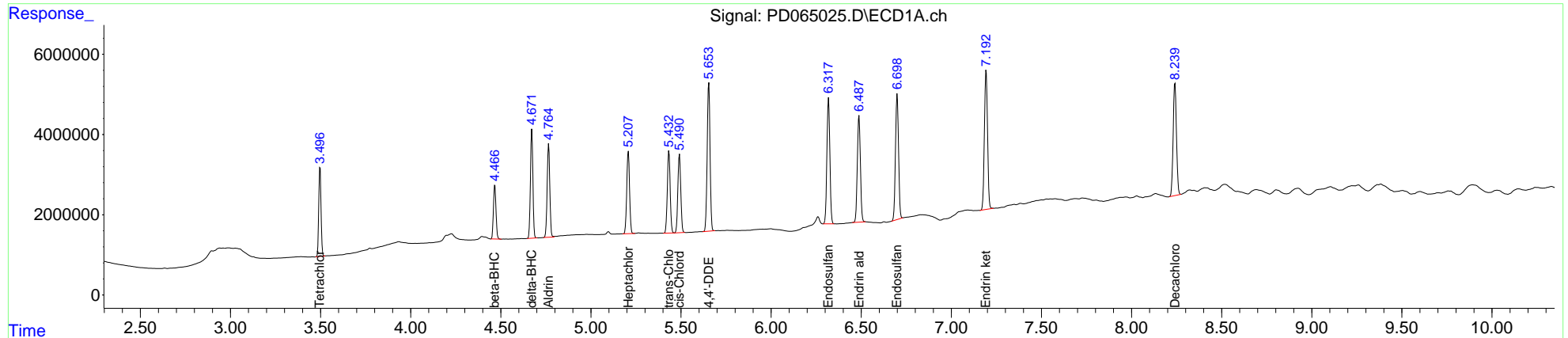
System Monitoring Compounds							
1)	SA Tetrachlo...	3.497	4.014	19796589	150.7E6	20.659	19.653
27)	SA Decachlor...	8.241	9.084	35618247	137.5E6	36.030	30.173
Target Compounds							
5)	MB Aldrin	4.766	5.504	23733271	166.6E6	20.417	18.500
6)	B beta-BHC	4.467	4.871	13279237	100.1E6	21.343	19.032
7)	B delta-BHC	4.672	5.088	25594405	191.6E6	20.780	19.560
8)	B Heptachlo...	5.208	5.894	22188761	138.7E6	19.977	17.694
10)	B trans-Chl...	5.433	6.127	22331916	141.4E6	19.915	18.360
11)	B cis-Chlor...	5.492	6.197	21828189	132.2E6	19.849	17.863m
12)	B 4,4'-DDE	5.654	6.357	40615588	245.7E6	40.185	35.276
15)	B Endosulfa...	6.319	6.942	36023139	192.6E6	39.172	34.481
18)	B Endrin al...	6.488	7.066	31416935	165.5E6	39.072	34.258
19)	B Endosulfa...	6.699	7.288	36973832	184.2E6	38.531	33.671
21)	B Endrin ke...	7.193	7.762	42042804	199.2E6	37.499	32.281

(f)=RT Delta > 1/2 Window (#)=Amounts differ by > 25% (m)=manual int.

Data Path : Z:\pestpcbsrv\HPCHEM1\ECD_D\Data\PD081821\
 Data File : PD065025.D
 Signal(s) : Signal #1: ECD1A.ch Signal #2: ECD2B.ch
 Acq On : 18 Aug 2021 16:57
 Operator : AR\AJ
 Sample : INDB302
 Misc :
 ALS Vial : 29 Sample Multiplier: 1

Integration File signal 1: autoint1.e
 Integration File signal 2: autoint2.e
 Quant Time: Aug 19 06:51:57 2021
 Quant Method : Z:\pestpcbsrv\HPCHEM1\ECD_D\Method\PD081721CLP.M
 Quant Title : GC Extractables
 QLast Update : Wed Aug 18 02:57:59 2021
 Response via : Initial Calibration
 Integrator: ChemStation

Volume Inj. : 1 µl
 Signal #1 Phase : ZB-MR2 Signal #2 Phase: ZB-MR1
 Signal #1 Info : 30M x 0.32mm x0.2 Signal #2 Info : 30M x 0.32mm x 0.50µm



Instrument :
 ECD_D
 ClientSampleId :
 INDB3132

Manual Integrations
 APPROVED
 mohammad
 8/23/2021 2:51:35 PM