

Data Path : Z:\pestpcbsrv\HPCHEM1\ECD_D\Data\PD081920\
 Data File : PD059033.D
 Signal(s) : Signal #1: ECD1A.ch Signal #2: ECD2B.ch
 Acq On : 19 Aug 2020 08:03
 Operator : DD\AJ
 Sample : HEXANE
 Misc :
 ALS Vial : 1 Sample Multiplier: 1

Instrument :
 ECD_D
 ClientSampleId :
 HEXANE

Integration File signal 1: autoint1.e
 Integration File signal 2: autoint2.e
 Quant Time: Aug 20 01:54:19 2020
 Quant Method : Z:\pestpcbsrv\HPCHEM1\ECD_D\Method\PD080620CLP.M
 Quant Title : GC Extractables
 QLast Update : Thu Aug 06 11:29:05 2020
 Response via : Initial Calibration
 Integrator: ChemStation

Volume Inj. : 1 µl
 Signal #1 Phase : ZB-MR2 Signal #2 Phase: ZB-MR1
 Signal #1 Info : 30M x 0.32mm x0.2 Signal #2 Info : 30M x 0.32mm x 0.50µm

| Compound | RT#1 | RT#2 | Resp#1 | Resp#2 | ng/ml | ng/ml |
|-----------------------------|--------|--------|----------|----------|-----------|---------|
| ----- | | | | | | |
| System Monitoring Compounds | | | | | | |
| 27) SA Decachlor... | 0.000 | 8.854 | 0 | 2598075 | N.D. | 1.894 |
| Target Compounds | | | | | | |
| 3) MA gamma-BHC... | 3.850f | 0.000 | 2224894 | 0 | 1.601 | N.D. # |
| 6) B beta-BHC | 4.107f | 0.000 | 1497828 | 0 | 2.543 | N.D. # |
| 7) B delta-BHC | 0.000 | 4.955f | 0 | 262687 | N.D. | 0.180 |
| 8) B Heptachlo... | 4.778f | 5.711 | 4143344 | 8333443 | 3.668 | 5.005 # |
| 9) A Endosulfan I | 0.000 | 6.085 | 0 | 543090 | N.D. | 0.350 |
| 10) B trans-Chl... | 0.000 | 5.885f | 0 | 1347142 | N.D. | 0.809 |
| 11) B cis-Chlor... | 0.000 | 6.085f | 0 | 543090 | N.D. | 0.323 |
| 12) B 4,4'-DDE | 0.000 | 6.243f | 0 | 1640203 | N.D. | 1.035 |
| 13) MA Dieldrin | 5.407 | 0.000 | 19070730 | 0 | 15.699 | N.D. # |
| 14) MA Endrin | 5.650 | 0.000 | 15369683 | 0 | 15.472 | N.D. # |
| 16) A 4,4'-DDD | 0.000 | 6.621f | 0 | 1168976 | N.D. | 0.892 |
| 17) MA 4,4'-DDT | 6.045 | 6.977 | 2625731 | 1596196 | 2.920 | 1.210 # |
| 18) B Endrin a... | 6.045f | 0.000 | 2625731 | 0 | 3.070 | N.D. # |
| 19) B Endosulfa... | 0.000 | 7.096 | 0 | 1219642 | N.D. | 0.849 |
| 20) A Methoxychlor | 0.000 | 7.353f | 0 | 25661967 | N.D. | 37.142 |
| 22) Toxaphene-1 | 5.388 | 6.243 | 1381158 | 1640203 | 217.096 | 193.427 |
| 23) Toxaphene-2 | 5.512 | 0.000 | 77034617 | 0 | 10646.646 | N.D. # |
| 24) Toxaphene-3 | 0.000 | 6.977 | 0 | 1596196 | N.D. | 120.078 |
| 25) Toxaphene-4 | 0.000 | 6.977 | 0 | 1596196 | N.D. | 41.582 |
| ----- | | | | | | |

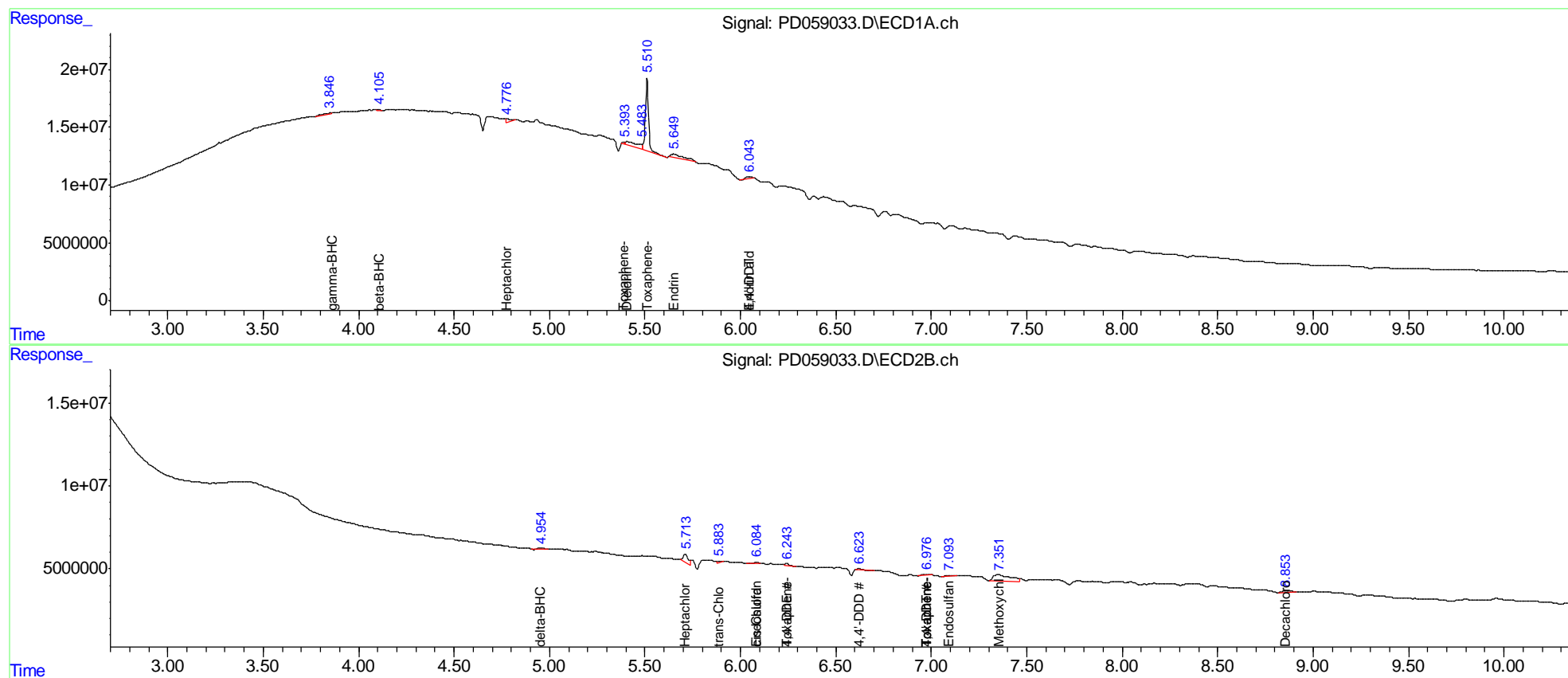
(f)=RT Delta > 1/2 Window (#)=Amounts differ by > 25% (m)=manual int.

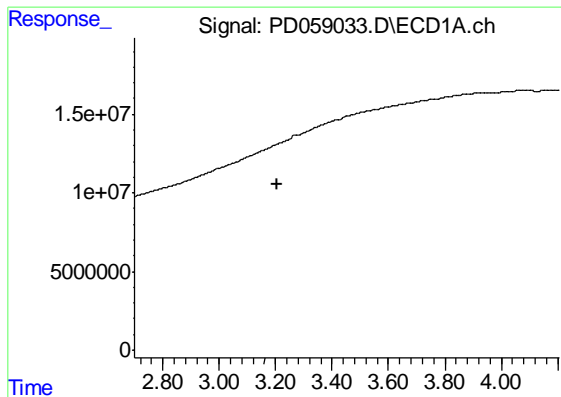
Data Path : Z:\pestpcbsrv\HPCHEM1\ECD_D\Data\PD081920\
 Data File : PD059033.D
 Signal(s) : Signal #1: ECD1A.ch Signal #2: ECD2B.ch
 Acq On : 19 Aug 2020 08:03
 Operator : DD\AJ
 Sample : HEXANE
 Misc :
 ALS Vial : 1 Sample Multiplier: 1

Instrument :
 ECD_D
 ClientSampled :
 HEXANE

Integration File signal 1: autoint1.e
 Integration File signal 2: autoint2.e
 Quant Time: Aug 20 01:54:19 2020
 Quant Method : Z:\pestpcbsrv\HPCHEM1\ECD_D\Method\PD080620CLP.M
 Quant Title : GC Extractables
 QLast Update : Thu Aug 06 11:29:05 2020
 Response via : Initial Calibration
 Integrator: ChemStation

Volume Inj. : 1 µl
 Signal #1 Phase : ZB-MR2 Signal #2 Phase: ZB-MR1
 Signal #1 Info : 30M x 0.32mm x0.2 Signal #2 Info : 30M x 0.32mm x 0.50µm

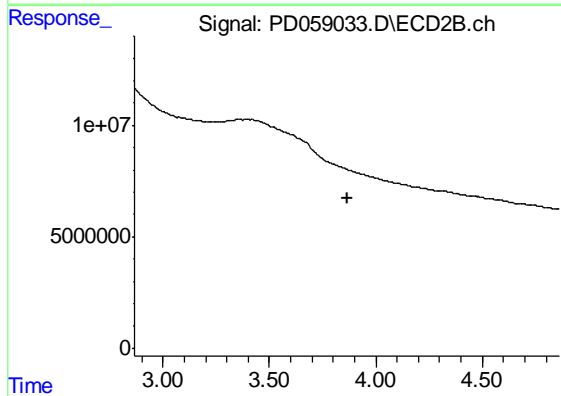




#1 Tetrachloro-m-xylene

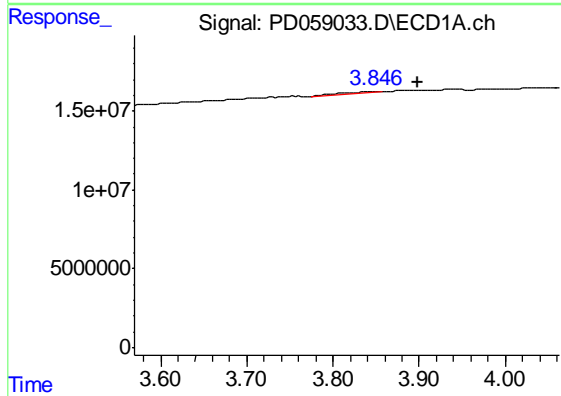
R.T.: 0.000 min
 Exp R.T. : 3.207 min
 Response: 0
 Conc: N.D.

Instrument :
 ECD_D
 ClientSampleId :
 HEXANE



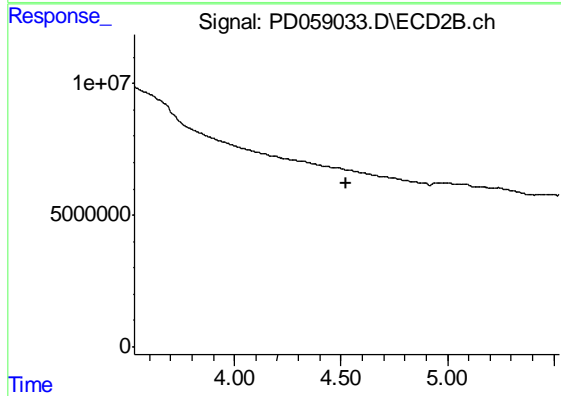
#1 Tetrachloro-m-xylene

R.T.: 0.000 min
 Exp R.T. : 3.865 min
 Response: 0
 Conc: N.D.



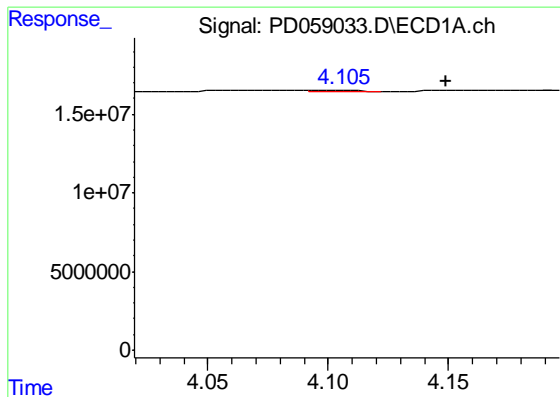
#3 gamma-BHC (Lindane)

R.T.: 3.850 min
 Delta R.T.: -0.050 min
 Response: 2224894
 Conc: 1.60 ng/ml



#3 gamma-BHC (Lindane)

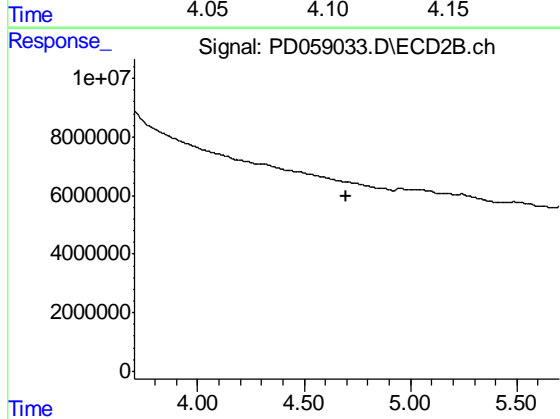
R.T.: 0.000 min
 Exp R.T. : 4.528 min
 Response: 0
 Conc: N.D.



#6 beta-BHC

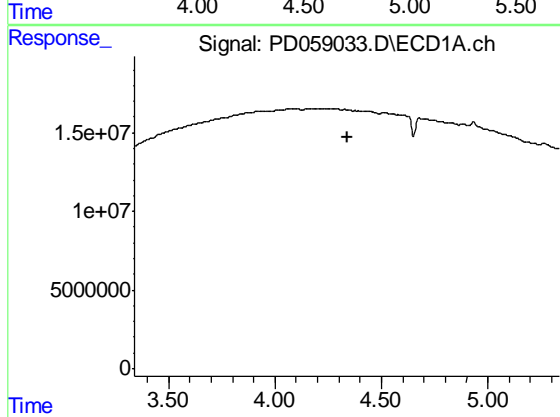
R.T.: 4.107 min
 Delta R.T.: -0.042 min
 Response: 1497828
 Conc: 2.54 ng/ml

Instrument :
 ECD_D
 ClientSampleId :
 HEXANE



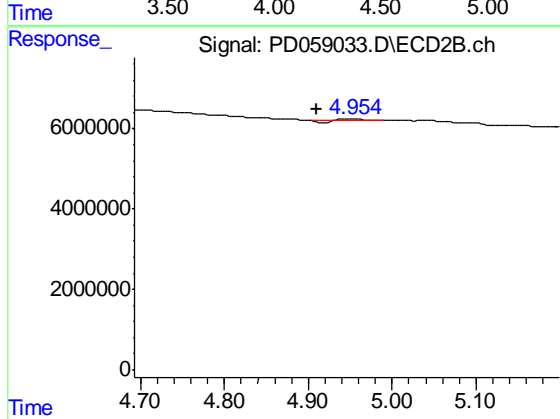
#6 beta-BHC

R.T.: 0.000 min
 Exp R.T. : 4.700 min
 Response: 0
 Conc: N.D.



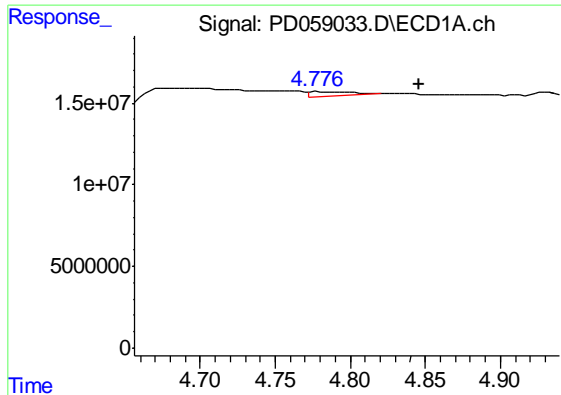
#7 delta-BHC

R.T.: 0.000 min
 Exp R.T. : 4.339 min
 Response: 0
 Conc: N.D.



#7 delta-BHC

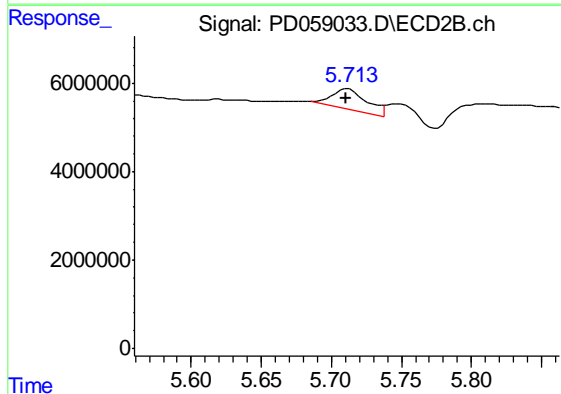
R.T.: 4.955 min
 Delta R.T.: 0.044 min
 Response: 262687
 Conc: 0.18 ng/ml



#8 Heptachlor epoxide

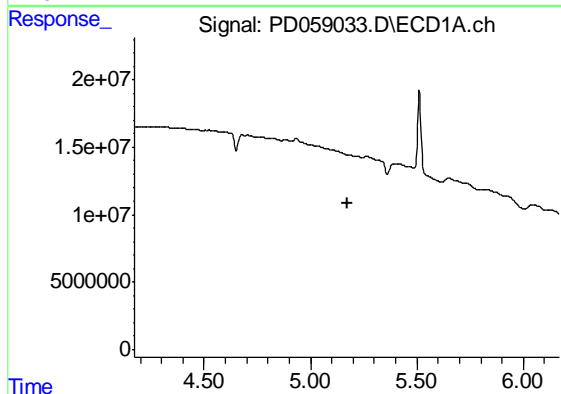
R.T.: 4.778 min
 Delta R.T.: -0.068 min
 Response: 4143344
 Conc: 3.67 ng/ml

Instrument :
 ECD_D
 ClientSampleId :
 HEXANE



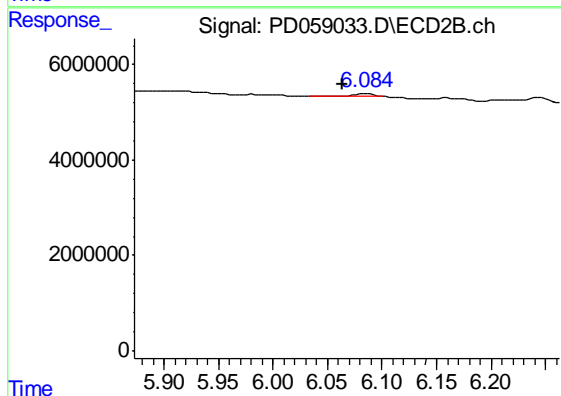
#8 Heptachlor epoxide

R.T.: 5.711 min
 Delta R.T.: 0.000 min
 Response: 8333443
 Conc: 5.00 ng/ml



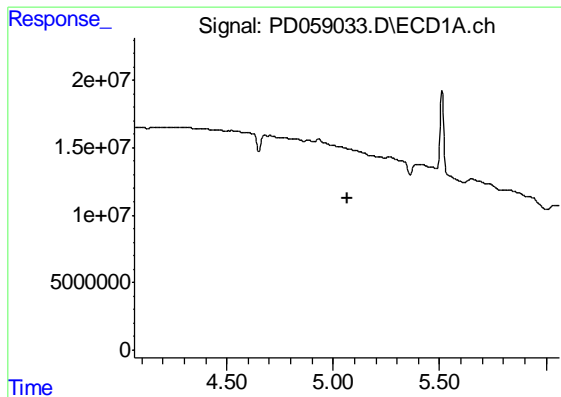
#9 Endosulfan I

R.T.: 0.000 min
 Exp R.T. : 5.172 min
 Response: 0
 Conc: N.D.



#9 Endosulfan I

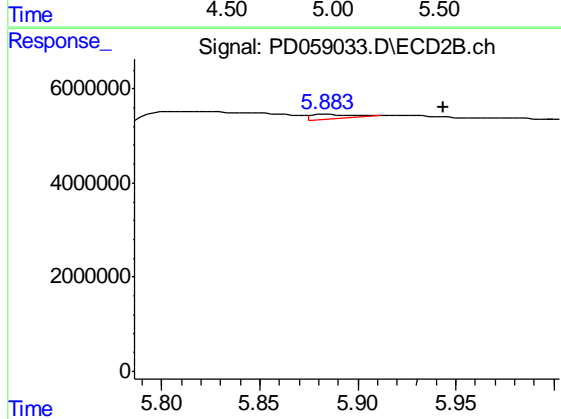
R.T.: 6.085 min
 Delta R.T.: 0.021 min
 Response: 543090
 Conc: 0.35 ng/ml



#10 trans-Chlordane

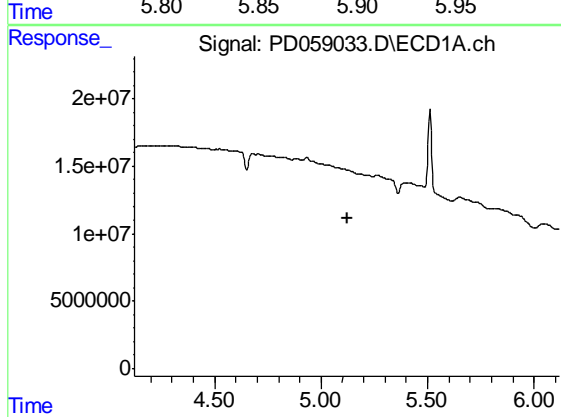
R.T.: 0.000 min
 Exp R.T. : 5.065 min
 Response: 0
 Conc: N.D.

Instrument :
 ECD_D
 ClientSampleId :
 HEXANE



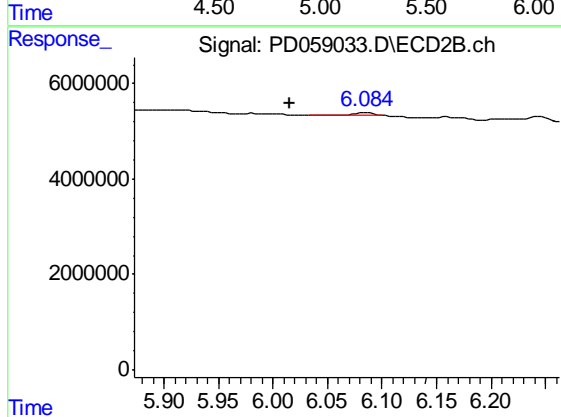
#10 trans-Chlordane

R.T.: 5.885 min
 Delta R.T.: -0.059 min
 Response: 1347142
 Conc: 0.81 ng/ml



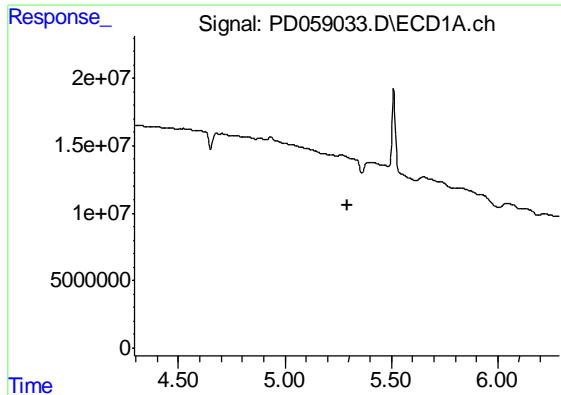
#11 cis-Chlordane

R.T.: 0.000 min
 Exp R.T. : 5.122 min
 Response: 0
 Conc: N.D.



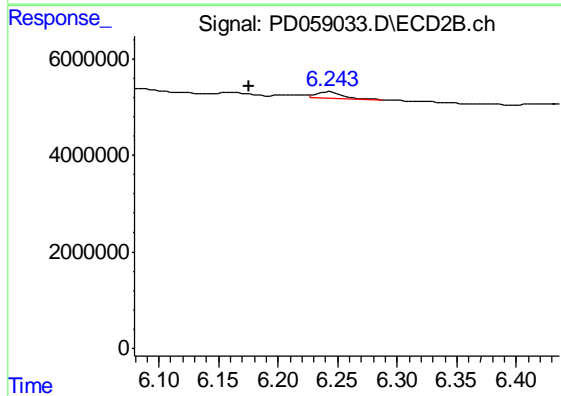
#11 cis-Chlordane

R.T.: 6.085 min
 Delta R.T.: 0.069 min
 Response: 543090
 Conc: 0.32 ng/ml

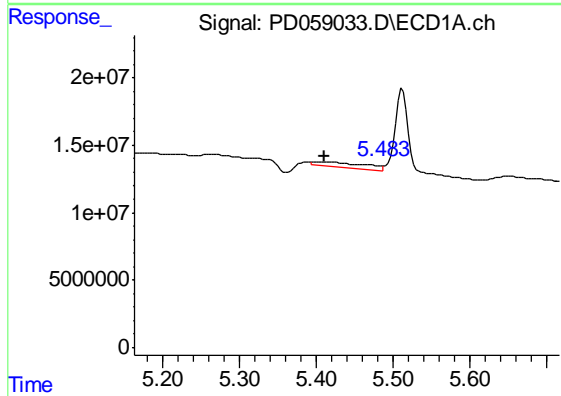


#12 4,4'-DDE
 R.T.: 0.000 min
 Exp R.T. : 5.291 min
 Response: 0
 Conc: N.D.

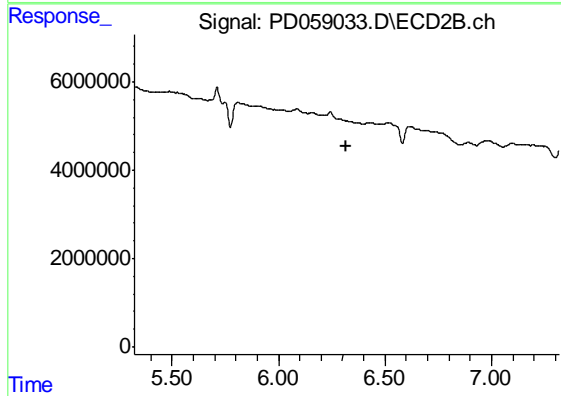
Instrument :
 ECD_D
 ClientSampled :
 HEXANE



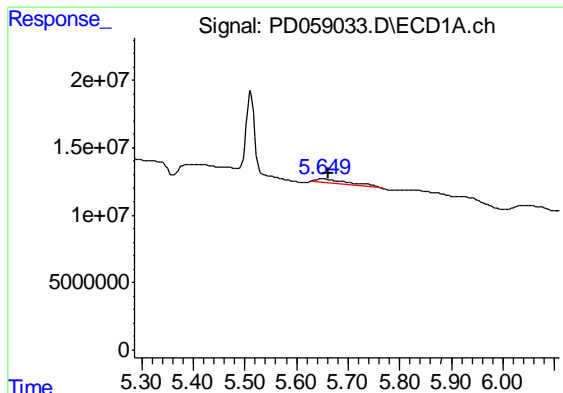
#12 4,4'-DDE
 R.T.: 6.243 min
 Delta R.T.: 0.067 min
 Response: 1640203
 Conc: 1.03 ng/ml



#13 Dieldrin
 R.T.: 5.407 min
 Delta R.T.: -0.003 min
 Response: 19070730
 Conc: 15.70 ng/ml

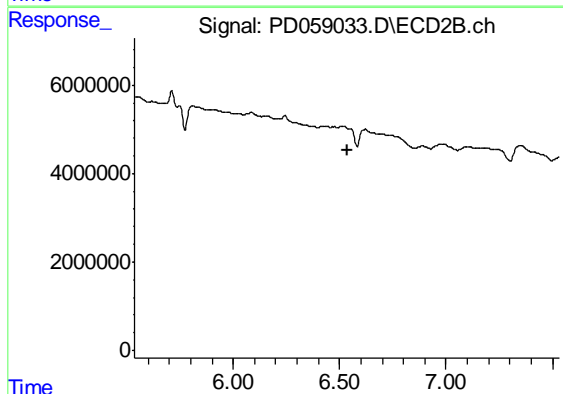


#13 Dieldrin
 R.T.: 0.000 min
 Exp R.T. : 6.319 min
 Response: 0
 Conc: N.D.

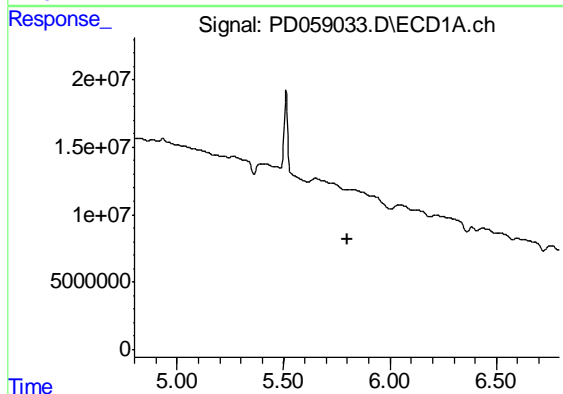


#14 Endrin
 R.T.: 5.650 min
 Delta R.T.: -0.010 min
 Response: 15369683
 Conc: 15.47 ng/ml

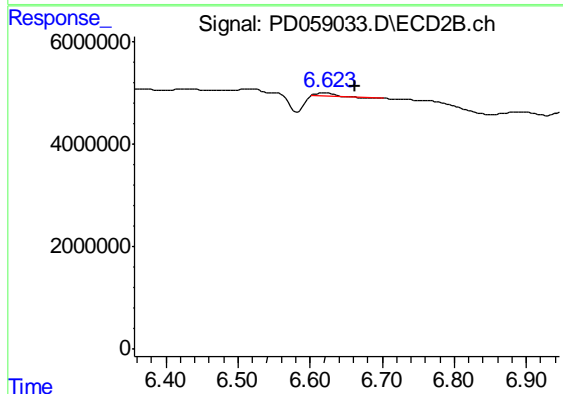
Instrument :
 ECD_D
 ClientSampled :
 HEXANE



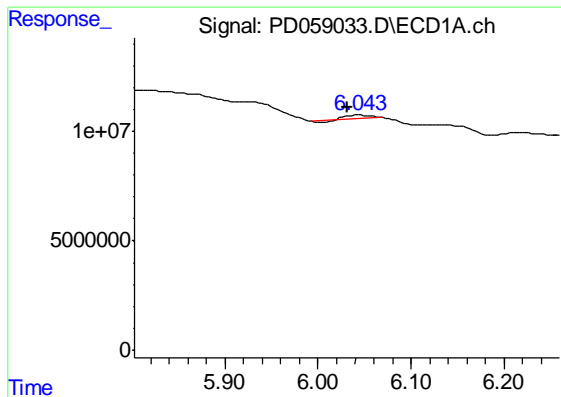
#14 Endrin
 R.T.: 0.000 min
 Exp R.T. : 6.535 min
 Response: 0
 Conc: N.D.



#16 4,4'-DDD
 R.T.: 0.000 min
 Exp R.T. : 5.798 min
 Response: 0
 Conc: N.D.



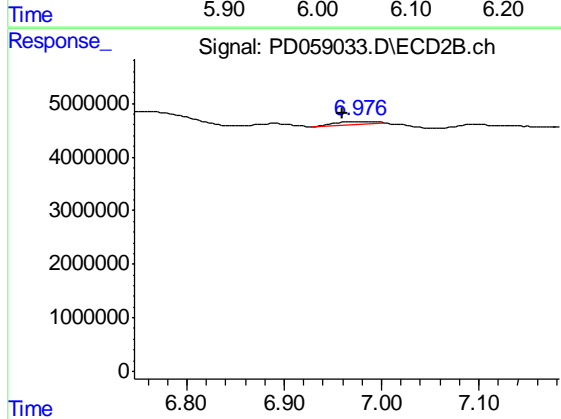
#16 4,4'-DDD
 R.T.: 6.621 min
 Delta R.T.: -0.043 min
 Response: 1168976
 Conc: 0.89 ng/ml



#17 4,4'-DDT

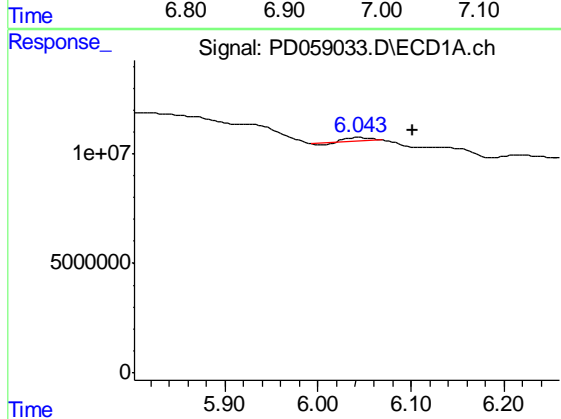
R.T.: 6.045 min
 Delta R.T.: 0.013 min
 Response: 2625731
 Conc: 2.92 ng/ml

Instrument :
 ECD_D
 ClientSampleId :
 HEXANE



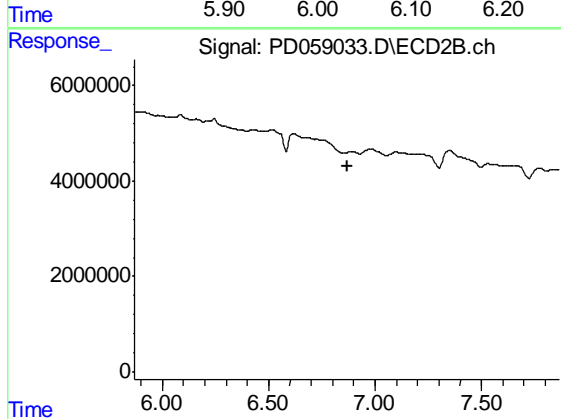
#17 4,4'-DDT

R.T.: 6.977 min
 Delta R.T.: 0.017 min
 Response: 1596196
 Conc: 1.21 ng/ml



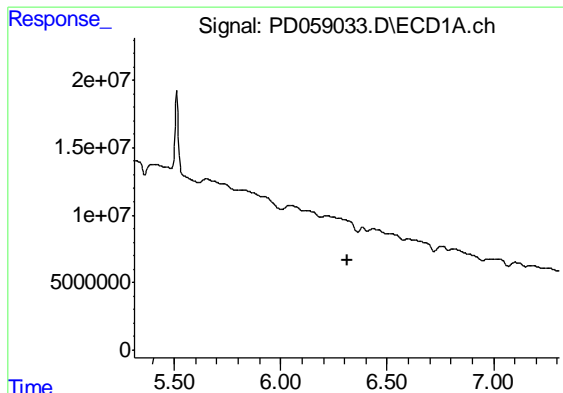
#18 Endrin aldehyde

R.T.: 6.045 min
 Delta R.T.: -0.057 min
 Response: 2625731
 Conc: 3.07 ng/ml



#18 Endrin aldehyde

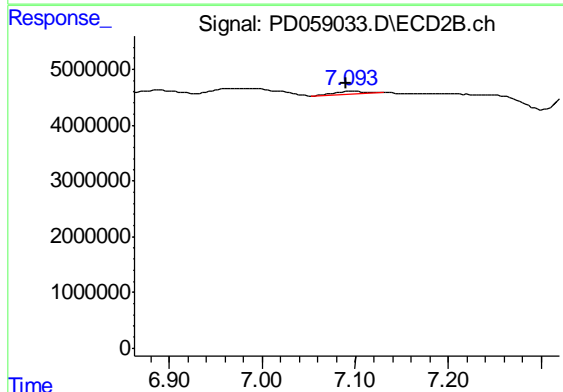
R.T.: 0.000 min
 Exp R.T. : 6.868 min
 Response: 0
 Conc: N.D.



#19 Endosulfan Sulfate

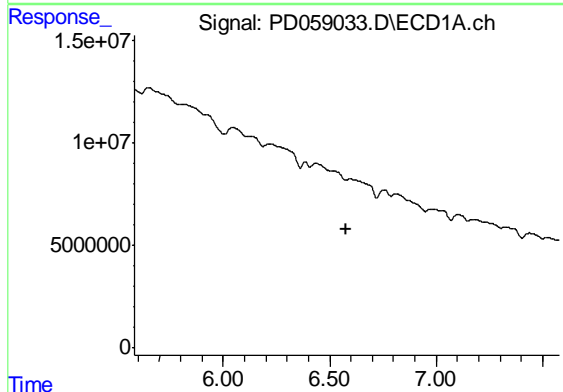
R.T.: 0.000 min
 Exp R.T. : 6.312 min
 Response: 0
 Conc: N.D.

Instrument :
 ECD_D
 ClientSampleId :
 HEXANE



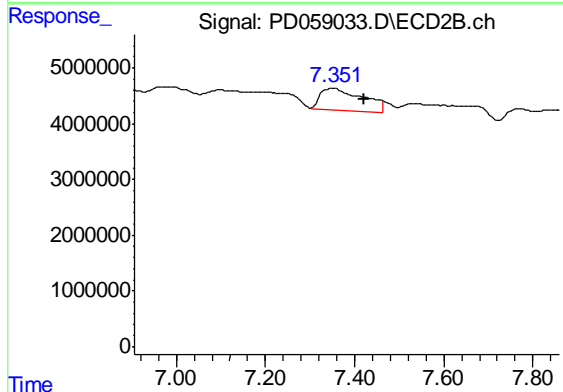
#19 Endosulfan Sulfate

R.T.: 7.096 min
 Delta R.T.: 0.005 min
 Response: 1219642
 Conc: 0.85 ng/ml



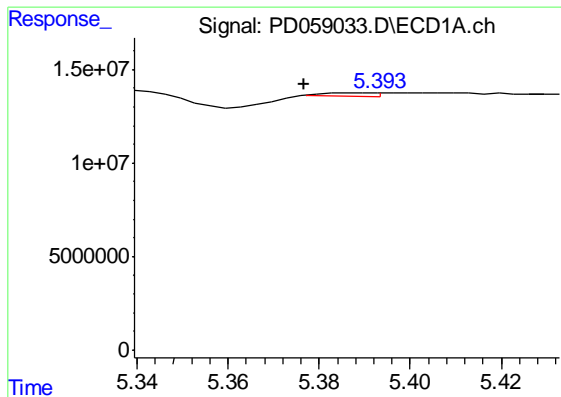
#20 Methoxychlor

R.T.: 0.000 min
 Exp R.T. : 6.580 min
 Response: 0
 Conc: N.D.



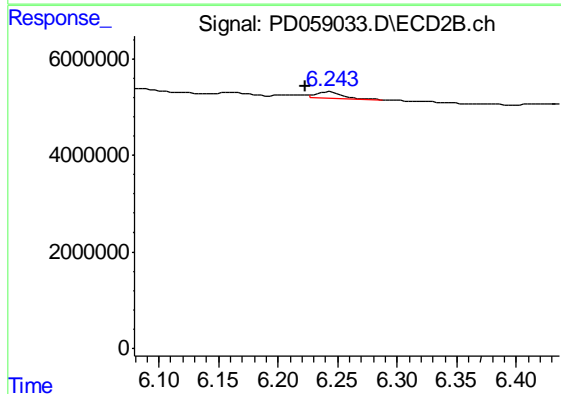
#20 Methoxychlor

R.T.: 7.353 min
 Delta R.T.: -0.068 min
 Response: 25661967
 Conc: 37.14 ng/ml

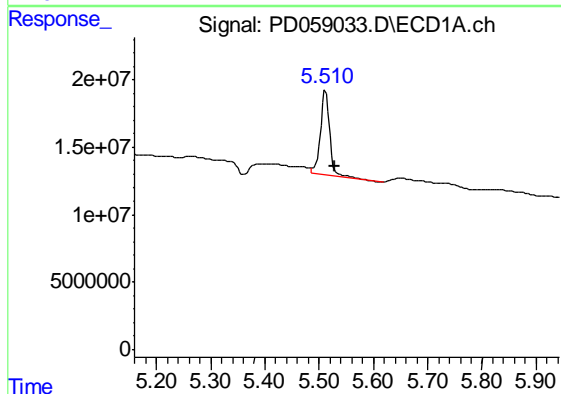


#22 Toxaphene-1
 R.T.: 5.388 min
 Delta R.T.: 0.012 min
 Response: 1381158
 Conc: 217.10 ng/ml

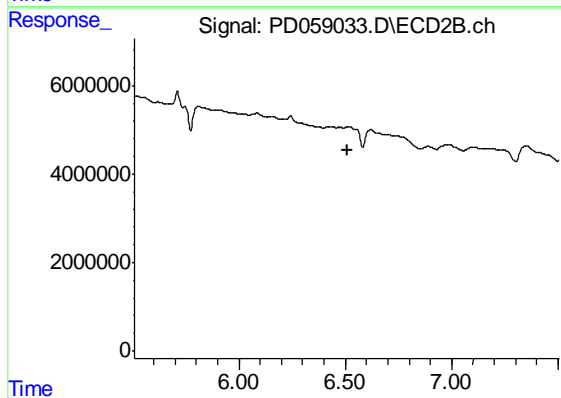
Instrument :
 ECD_D
 ClientSampleId :
 HEXANE



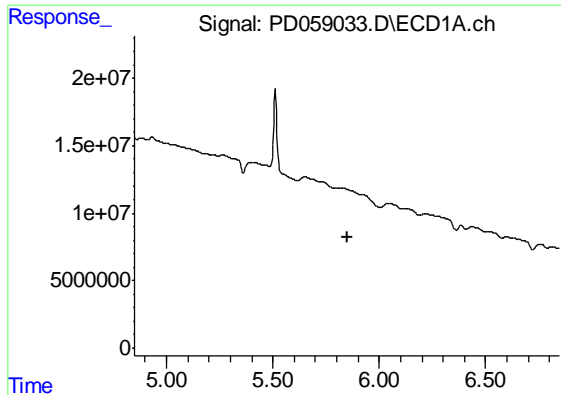
#22 Toxaphene-1
 R.T.: 6.243 min
 Delta R.T.: 0.021 min
 Response: 1640203
 Conc: 193.43 ng/ml



#23 Toxaphene-2
 R.T.: 5.512 min
 Delta R.T.: -0.017 min
 Response: 77034617
 Conc: 10646.65 ng/ml



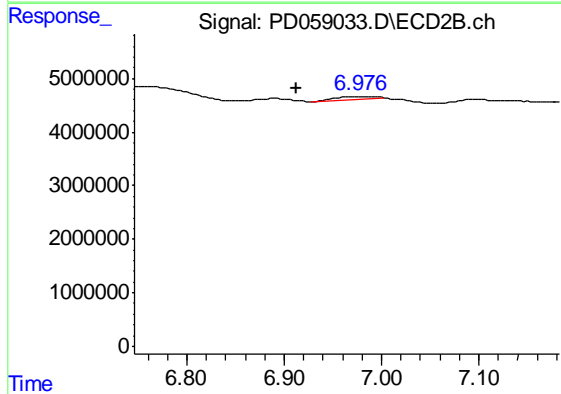
#23 Toxaphene-2
 R.T.: 0.000 min
 Exp R.T. : 6.509 min
 Response: 0
 Conc: N.D.



#24 Toxaphene-3

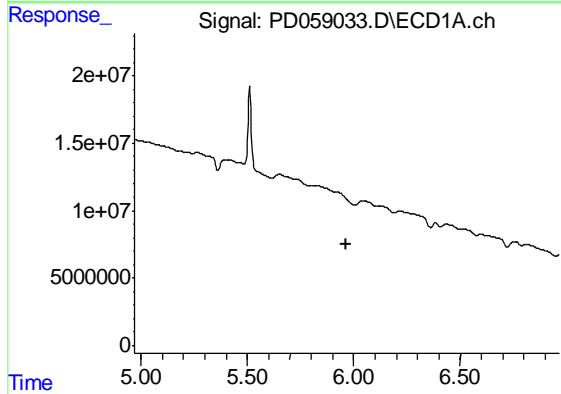
R.T.: 0.000 min
 Exp R.T. : 5.849 min
 Response: 0
 Conc: N.D.

Instrument :
 ECD_D
 ClientSampleId :
 HEXANE



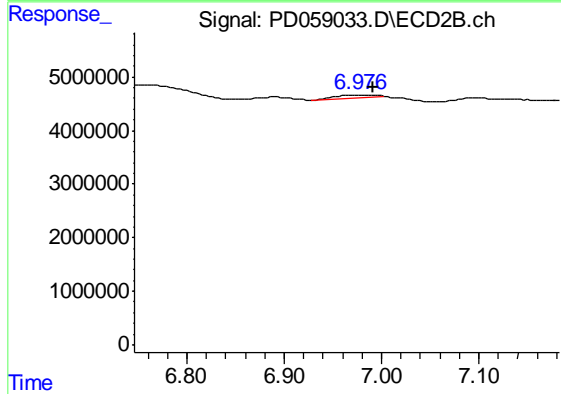
#24 Toxaphene-3

R.T.: 6.977 min
 Delta R.T.: 0.064 min
 Response: 1596196
 Conc: 120.08 ng/ml



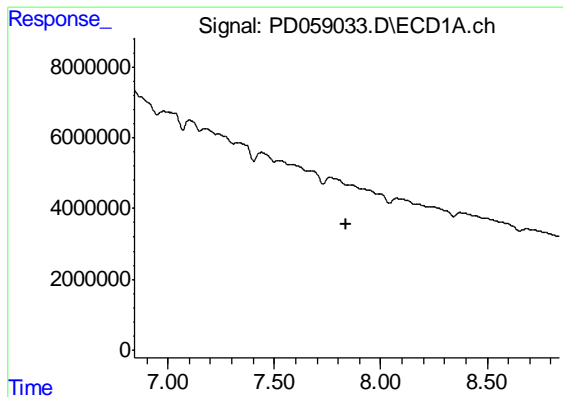
#25 Toxaphene-4

R.T.: 0.000 min
 Exp R.T. : 5.966 min
 Response: 0
 Conc: N.D.



#25 Toxaphene-4

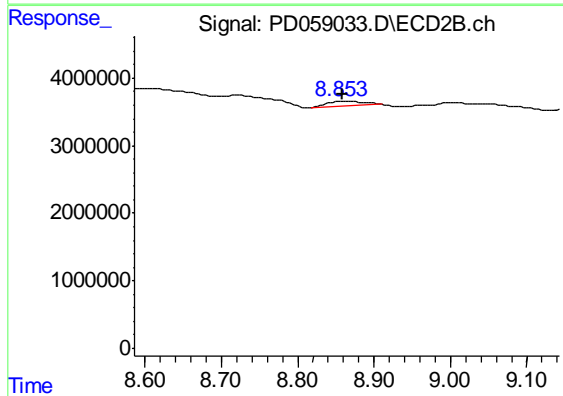
R.T.: 6.977 min
 Delta R.T.: -0.014 min
 Response: 1596196
 Conc: 41.58 ng/ml



#27 Decachlorobiphenyl

R.T.: 0.000 min
Exp R.T. : 7.841 min
Response: 0
Conc: N.D.

Instrument :
ECD_D
ClientSampleId :
HEXANE



#27 Decachlorobiphenyl

R.T.: 8.854 min
Delta R.T.: -0.004 min
Response: 2598075
Conc: 1.89 ng/ml