

Data Path : Z:\pestpcbsrv\HPCHEM1\ECD_D\Data\PD081920\
 Data File : PD059044.D
 Signal(s) : Signal #1: ECD1A.ch Signal #2: ECD2B.ch
 Acq On : 19 Aug 2020 11:30
 Operator : DD\AJ
 Sample : L3613-07
 Misc :
 ALS Vial : 12 Sample Multiplier: 1

Instrument :
 ECD_D
 ClientSampleId :
 DBFQ6

Integration File signal 1: autoint1.e
 Integration File signal 2: autoint2.e
 Quant Time: Aug 20 01:57:28 2020
 Quant Method : Z:\pestpcbsrv\HPCHEM1\ECD_D\Method\PD080620CLP.M
 Quant Title : GC Extractables
 QLast Update : Thu Aug 06 11:29:05 2020
 Response via : Initial Calibration
 Integrator: ChemStation

Volume Inj. : 1 µl
 Signal #1 Phase : ZB-MR2 Signal #2 Phase: ZB-MR1
 Signal #1 Info : 30M x 0.32mm x 0.2 Signal #2 Info : 30M x 0.32mm x 0.50µm

| | Compound | RT#1 | RT#2 | Resp#1 | Resp#2 | ng/ml | ng/ml |
|-----------------------------|-----------------|-------|--------|----------|----------|---------|---------|
| ----- | | | | | | | |
| System Monitoring Compounds | | | | | | | |
| 1) | SA Tetrachlo... | 3.208 | 3.866 | 14776167 | 23905162 | 15.279 | 16.506 |
| 27) | SA Decachlor... | 7.841 | 8.862 | 26030290 | 29422604 | 24.713 | 21.454 |
| Target Compounds | | | | | | | |
| 9) | A Endosulfan I | 0.000 | 6.019f | 0 | 1214153 | N.D. | 0.783 |
| 10) | B trans-Chl... | 0.000 | 5.934 | 0 | 4082063 | N.D. | 2.451 |
| 11) | B cis-Chlor... | 0.000 | 6.019 | 0 | 1214153 | N.D. | 0.721 |
| 13) | MA Dieldrin | 5.399 | 0.000 | 3199455 | 0 | 2.634 | N.D. # |
| 15) | B Endosulfa... | 0.000 | 6.779 | 0 | 1340823 | N.D. | 0.953 |
| 16) | A 4,4'-DDD | 5.801 | 6.664 | 2191653 | 1508753 | 2.324 | 1.151 # |
| 22) | Toxaphene-1 | 5.399 | 0.000 | 3199455 | 0 | 502.904 | N.D. # |
| 23) | Toxaphene-2 | 0.000 | 6.447 | 0 | 766161 | N.D. | 72.723 |
| 24) | Toxaphene-3 | 5.801 | 0.000 | 2191653 | 0 | 398.470 | N.D. # |
| ----- | | | | | | | |

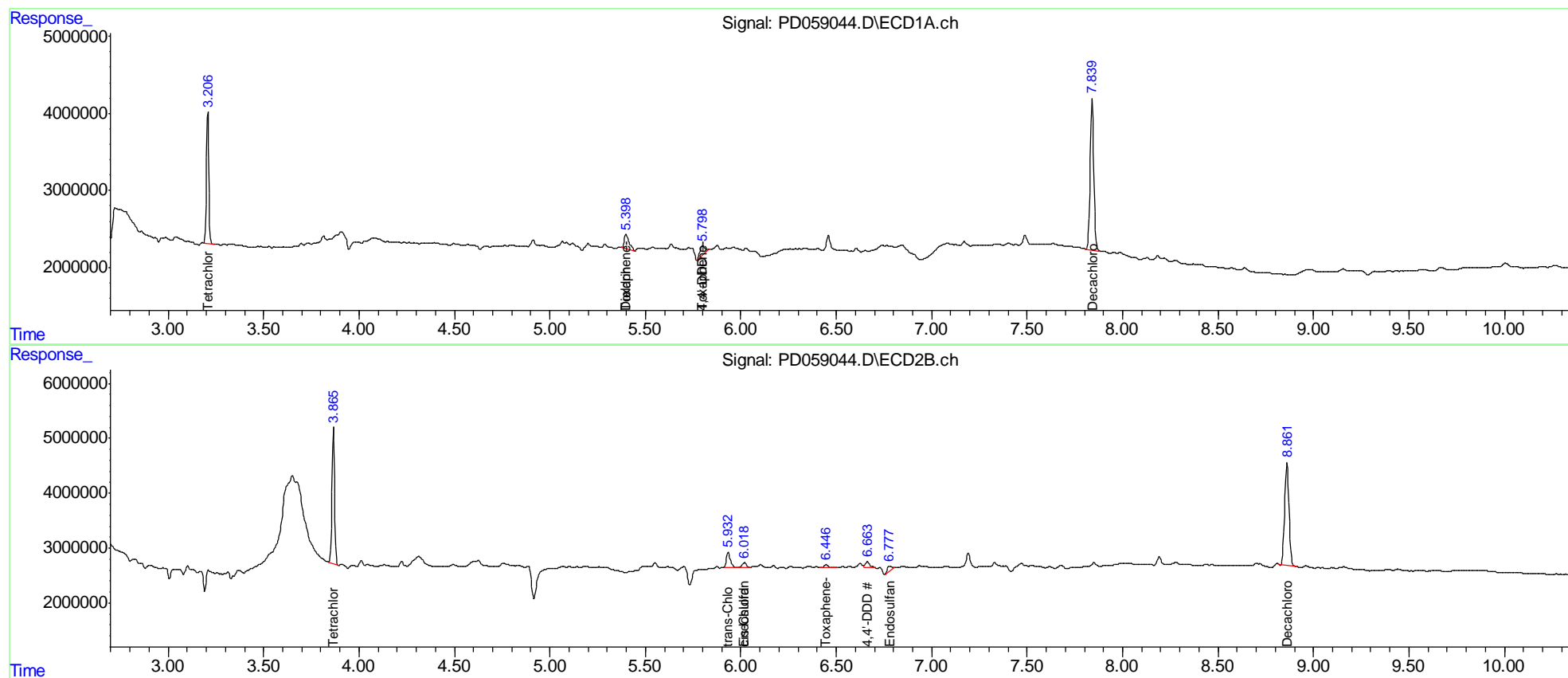
(f)=RT Delta > 1/2 Window (#)=Amounts differ by > 25% (m)=manual int.

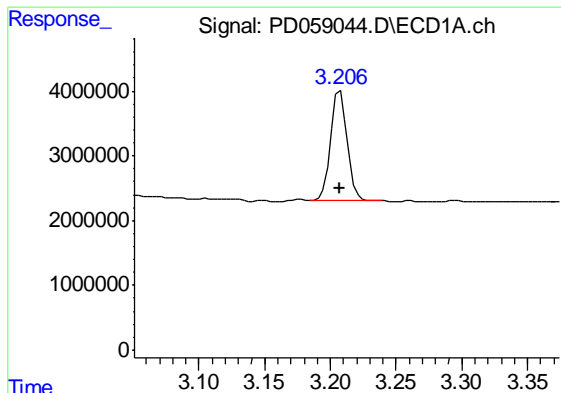
Data Path : Z:\pestpcbsrv\HPCHEM1\ECD_D\Data\PD081920\
 Data File : PD059044.D
 Signal(s) : Signal #1: ECD1A.ch Signal #2: ECD2B.ch
 Acq On : 19 Aug 2020 11:30
 Operator : DD\AJ
 Sample : L3613-07
 Misc :
 ALS Vial : 12 Sample Multiplier: 1

Instrument :
 ECD_D
 ClientSampleId :
 DBFQ6

Integration File signal 1: autoint1.e
 Integration File signal 2: autoint2.e
 Quant Time: Aug 20 01:57:28 2020
 Quant Method : Z:\pestpcbsrv\HPCHEM1\ECD_D\Method\PD080620CLP.M
 Quant Title : GC Extractables
 QLast Update : Thu Aug 06 11:29:05 2020
 Response via : Initial Calibration
 Integrator: ChemStation

Volume Inj. : 1 µl
 Signal #1 Phase : ZB-MR2 Signal #2 Phase: ZB-MR1
 Signal #1 Info : 30M x 0.32mm x0.2 Signal #2 Info : 30M x 0.32mm x 0.50µm

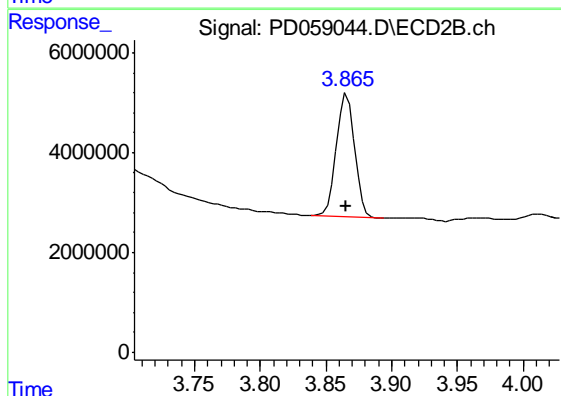




#1 Tetrachloro-m-xylene

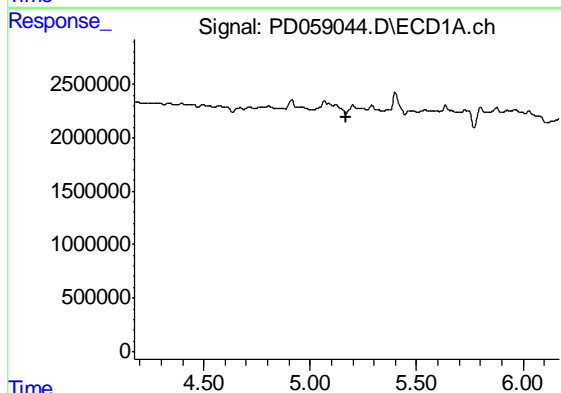
R.T.: 3.208 min
 Delta R.T.: 0.000 min
 Response: 14776167
 Conc: 15.28 ng/ml

Instrument :
 ECD_D
 ClientSampleId :
 DBFQ6



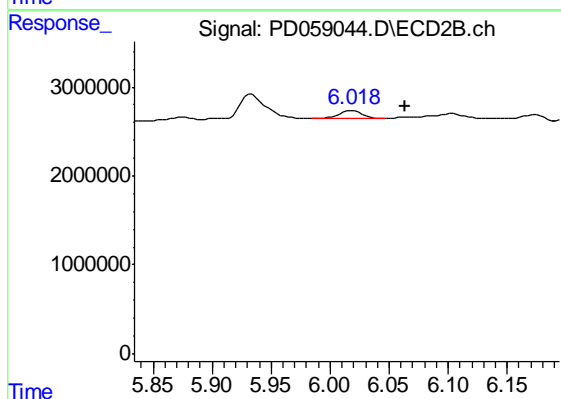
#1 Tetrachloro-m-xylene

R.T.: 3.866 min
 Delta R.T.: 0.001 min
 Response: 23905162
 Conc: 16.51 ng/ml



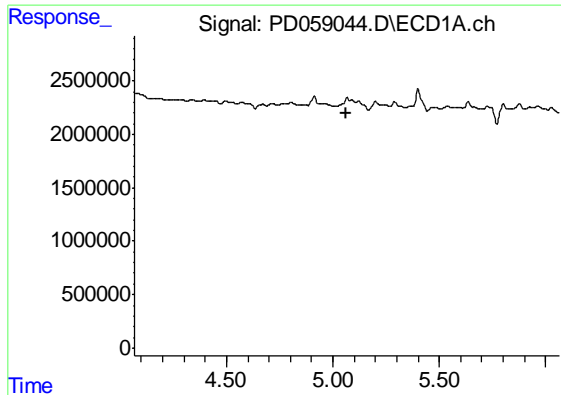
#9 Endosulfan I

R.T.: 0.000 min
 Exp R.T. : 5.172 min
 Response: 0
 Conc: N.D.



#9 Endosulfan I

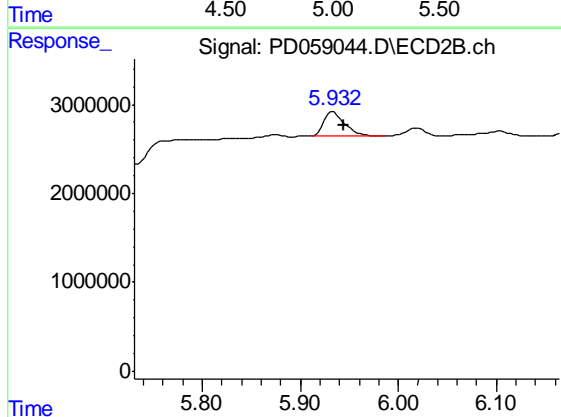
R.T.: 6.019 min
 Delta R.T.: -0.045 min
 Response: 1214153
 Conc: 0.78 ng/ml



#10 trans-Chlordane

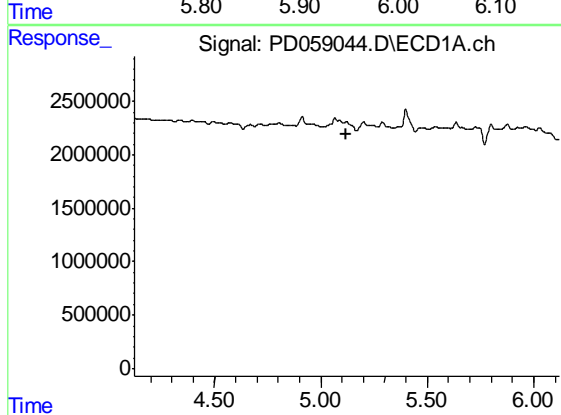
R.T.: 0.000 min
 Exp R.T. : 5.065 min
 Response: 0
 Conc: N.D.

Instrument :
 ECD_D
 ClientSampleId :
 DBFQ6



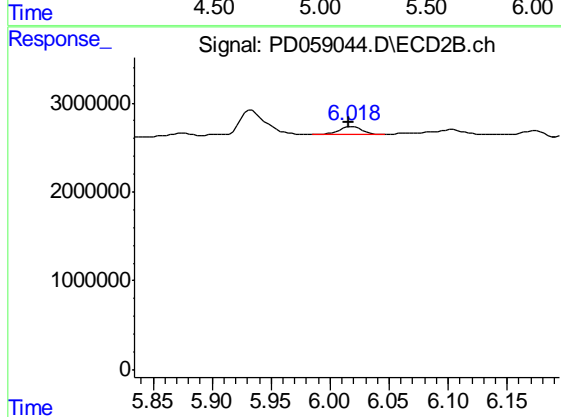
#10 trans-Chlordane

R.T.: 5.934 min
 Delta R.T.: -0.010 min
 Response: 4082063
 Conc: 2.45 ng/ml



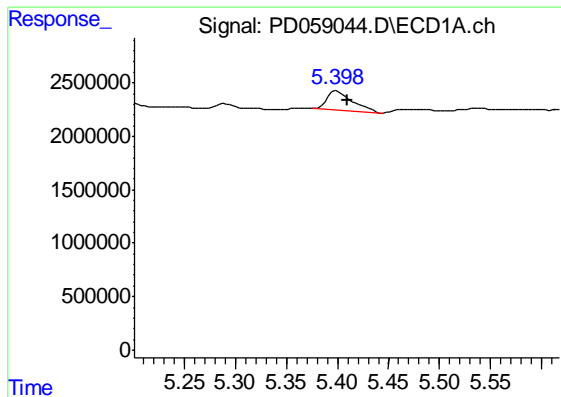
#11 cis-Chlordane

R.T.: 0.000 min
 Exp R.T. : 5.122 min
 Response: 0
 Conc: N.D.



#11 cis-Chlordane

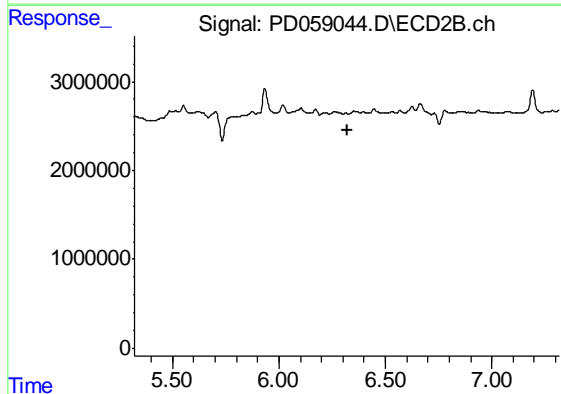
R.T.: 6.019 min
 Delta R.T.: 0.004 min
 Response: 1214153
 Conc: 0.72 ng/ml



#13 Dieldrin

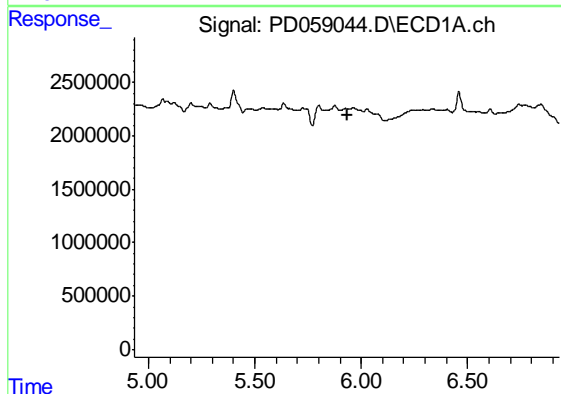
R.T.: 5.399 min
 Delta R.T.: -0.010 min
 Response: 3199455
 Conc: 2.63 ng/ml

Instrument :
 ECD_D
 ClientSampleId :
 DBFQ6



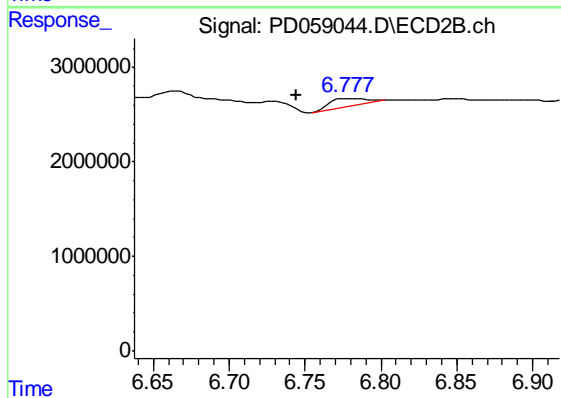
#13 Dieldrin

R.T.: 0.000 min
 Exp R.T. : 6.319 min
 Response: 0
 Conc: N.D.



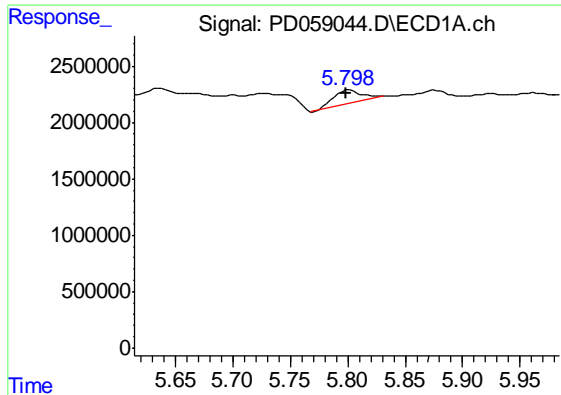
#15 Endosulfan II

R.T.: 0.000 min
 Exp R.T. : 5.934 min
 Response: 0
 Conc: N.D.



#15 Endosulfan II

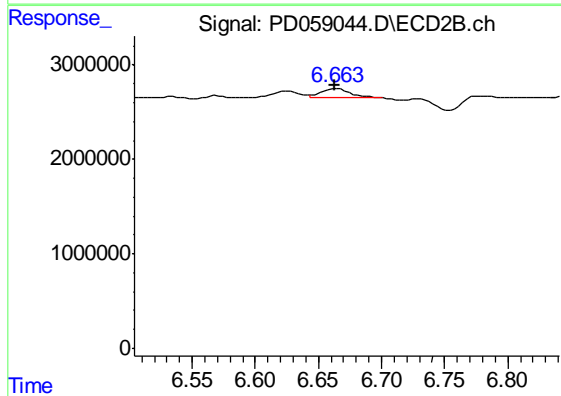
R.T.: 6.779 min
 Delta R.T.: 0.035 min
 Response: 1340823
 Conc: 0.95 ng/ml



#16 4,4'-DDD

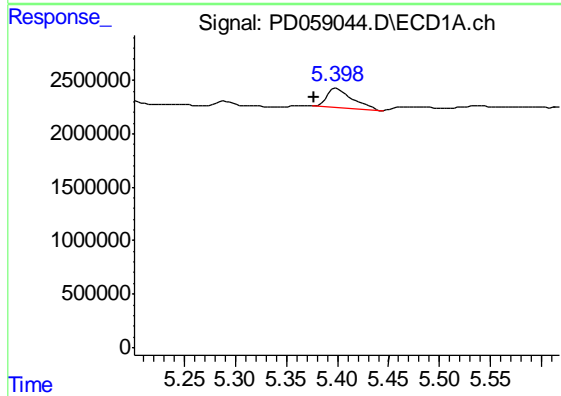
R.T.: 5.801 min
 Delta R.T.: 0.003 min
 Response: 2191653
 Conc: 2.32 ng/ml

Instrument :
 ECD_D
 ClientSampleId :
 DBFQ6



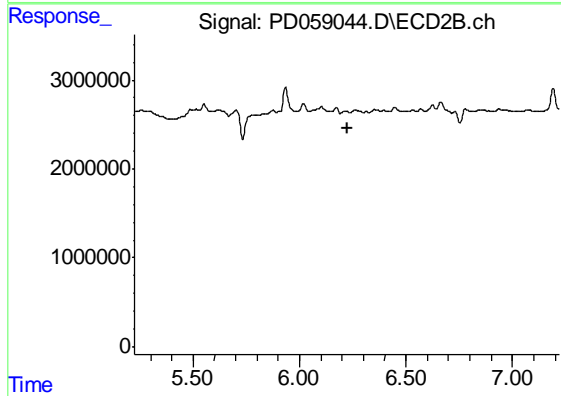
#16 4,4'-DDD

R.T.: 6.664 min
 Delta R.T.: 0.000 min
 Response: 1508753
 Conc: 1.15 ng/ml



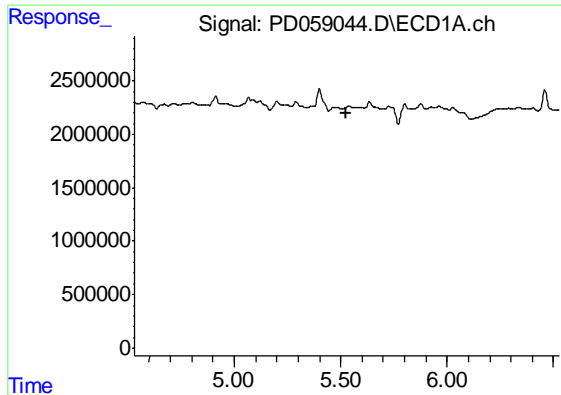
#22 Toxaphene-1

R.T.: 5.399 min
 Delta R.T.: 0.023 min
 Response: 3199455
 Conc: 502.90 ng/ml



#22 Toxaphene-1

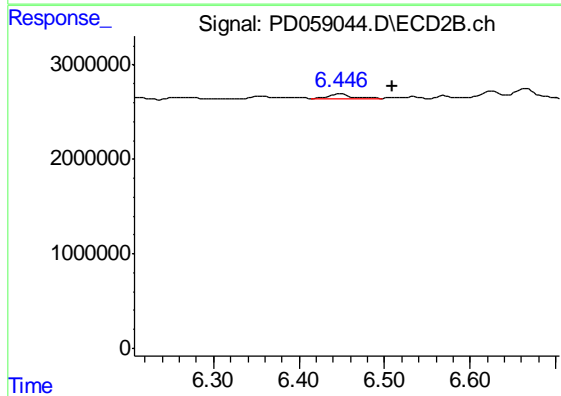
R.T.: 0.000 min
 Exp R.T. : 6.223 min
 Response: 0
 Conc: N.D.



#23 Toxaphene-2

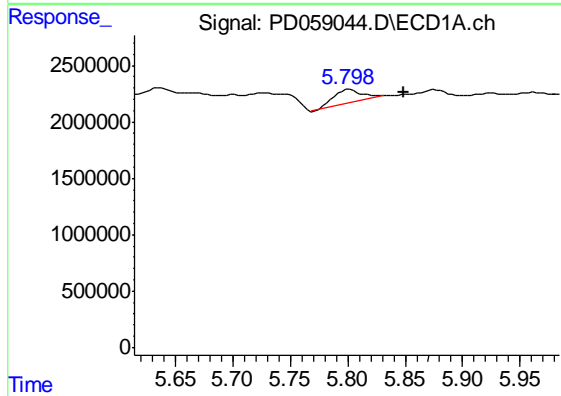
R.T.: 0.000 min
 Exp R.T. : 5.529 min
 Response: 0
 Conc: N.D.

Instrument :
 ECD_D
 ClientSampleId :
 DBFQ6



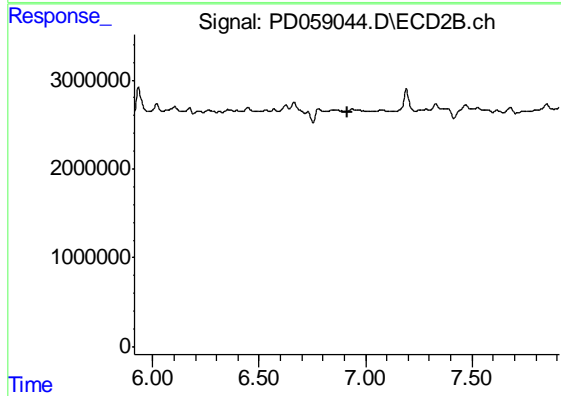
#23 Toxaphene-2

R.T.: 6.447 min
 Delta R.T.: -0.062 min
 Response: 766161
 Conc: 72.72 ng/ml



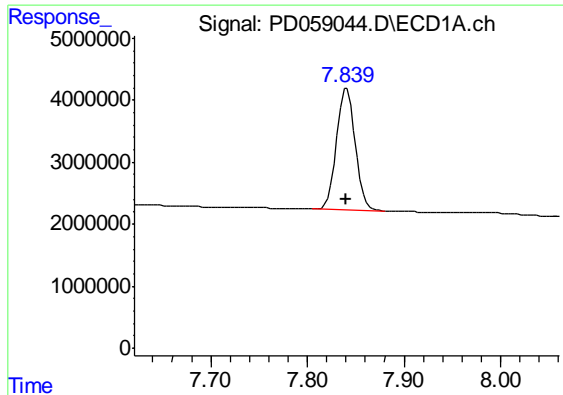
#24 Toxaphene-3

R.T.: 5.801 min
 Delta R.T.: -0.048 min
 Response: 2191653
 Conc: 398.47 ng/ml



#24 Toxaphene-3

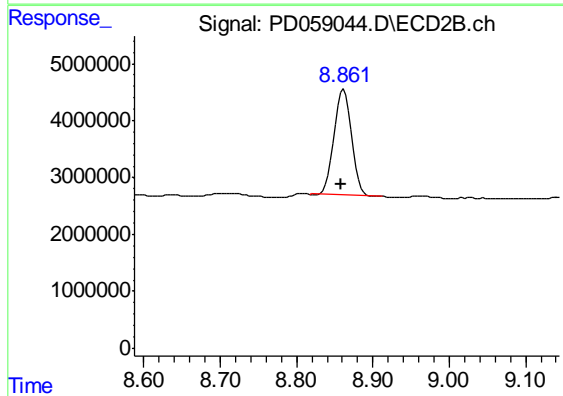
R.T.: 0.000 min
 Exp R.T. : 6.913 min
 Response: 0
 Conc: N.D.



#27 Decachlorobiphenyl

R.T.: 7.841 min
Delta R.T.: 0.000 min
Response: 26030290
Conc: 24.71 ng/ml

Instrument :
ECD_D
ClientSampleId :
DBFQ6



#27 Decachlorobiphenyl

R.T.: 8.862 min
Delta R.T.: 0.004 min
Response: 29422604
Conc: 21.45 ng/ml