

Data Path : Z:\pestpcbsrv\HPCHEM1\ECD_D\Data\PD081920\
 Data File : PD059056.D
 Signal(s) : Signal #1: ECD1A.ch Signal #2: ECD2B.ch
 Acq On : 19 Aug 2020 14:20
 Operator : DD\AJ
 Sample : L3613-19
 Misc :
 ALS Vial : 24 Sample Multiplier: 1

Instrument :
 ECD_D
 ClientSampled :
 DBFR6

Integration File signal 1: autoint1.e
 Integration File signal 2: autoint2.e
 Quant Time: Aug 20 02:01:50 2020
 Quant Method : Z:\pestpcbsrv\HPCHEM1\ECD_D\Method\PD080620CLP.M
 Quant Title : GC Extractables
 QLast Update : Thu Aug 06 11:29:05 2020
 Response via : Initial Calibration
 Integrator: ChemStation

Volume Inj. : 1 µl
 Signal #1 Phase : ZB-MR2 Signal #2 Phase: ZB-MR1
 Signal #1 Info : 30M x 0.32mm x0.2 Signal #2 Info : 30M x 0.32mm x 0.50µm

Compound	RT#1	RT#2	Resp#1	Resp#2	ng/ml	ng/ml

System Monitoring Compounds						
1) SA Tetrachlo...	3.207	3.866	12327312	18932160	12.747	13.073
27) SA Decachlor...	7.841	8.861	19068844	13677541	18.104	9.973 #
Target Compounds						
3) MA gamma-BHC...	3.905	0.000	2390666	0	1.720	N.D. #
5) MB Aldrin	4.413	5.328	1266525	948114	1.020	0.514 #
6) B beta-BHC	4.113f	4.715	565763	818658	0.961	0.941
8) B Heptachlo...	4.913f	5.776f	12204852	13655353	10.803	8.201
9) A Endosulfan I	5.201	6.062	-216306	2244630	N.D.	1.448
10) B trans-Chl...	0.000	5.934	0	20720843	N.D.	12.439
11) B cis-Chlor...	0.000	6.016	0	7838747	N.D.	4.656
12) B 4,4'-DDE	5.233f	6.164	765992	1741216	0.666	1.099 #
13) MA Dieldrin	5.398	6.353	14866796	1378569	12.238	0.824 #
15) B Endosulfa...	5.963	6.772	3001895	2710963	2.946	1.927 #
16) A 4,4'-DDD	0.000	6.658	0	2751638	N.D.	2.099
17) MA 4,4'-DDT	5.963f	0.000	3001895	0	3.338	N.D. #
19) B Endosulfa...	6.344	7.069	11442864	988463	11.181	0.688 #
20) A Methoxychlor	6.605	0.000	2763949	0	6.124	N.D. #
21) B Endrin ke...	6.740f	7.614f	4436392	1441976	3.965	0.991 #
22) Toxaphene-1	5.398	6.223	14866796	4585180	2336.828	540.726 #
23) Toxaphene-2	5.539	0.000	3045837	0	420.953	N.D. #
24) Toxaphene-3	5.874	0.000	448717	0	81.582	N.D. #
25) Toxaphene-4	5.963	0.000	3001895	0	161.350	N.D. #
26) Toxaphene-5	6.740	0.000	4436392	0	188.190	N.D. #

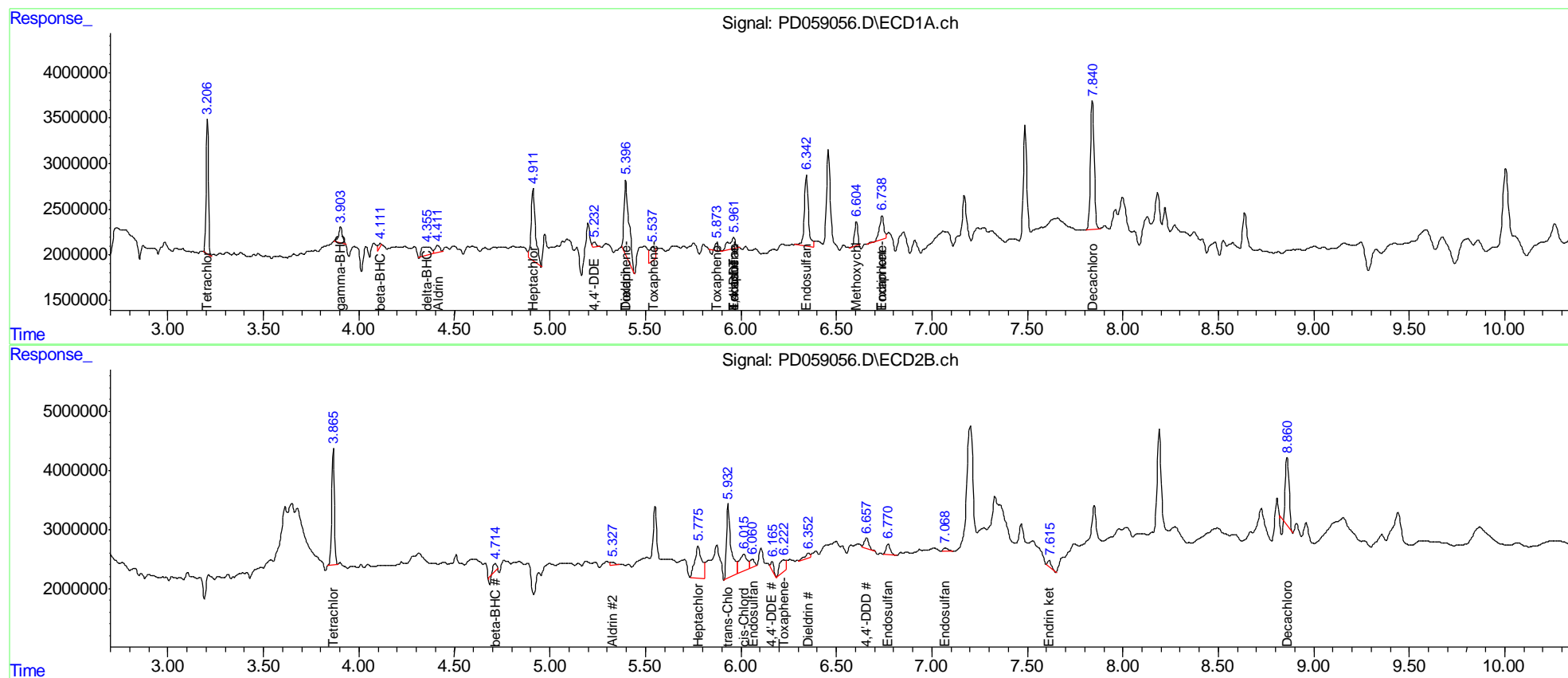
(f)=RT Delta > 1/2 Window (#)=Amounts differ by > 25% (m)=manual int.

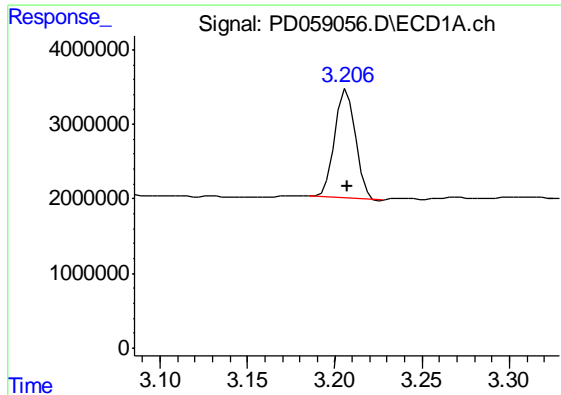
Data Path : Z:\pestpcbsrv\HPCHEM1\ECD_D\Data\PD081920\
 Data File : PD059056.D
 Signal(s) : Signal #1: ECD1A.ch Signal #2: ECD2B.ch
 Acq On : 19 Aug 2020 14:20
 Operator : DD\AJ
 Sample : L3613-19
 Misc :
 ALS Vial : 24 Sample Multiplier: 1

Instrument :
 ECD_D
 ClientSampleId :
 DBFR6

Integration File signal 1: autoint1.e
 Integration File signal 2: autoint2.e
 Quant Time: Aug 20 02:01:50 2020
 Quant Method : Z:\pestpcbsrv\HPCHEM1\ECD_D\Method\PD080620CLP.M
 Quant Title : GC Extractables
 QLast Update : Thu Aug 06 11:29:05 2020
 Response via : Initial Calibration
 Integrator: ChemStation

Volume Inj. : 1 µl
 Signal #1 Phase : ZB-MR2 Signal #2 Phase: ZB-MR1
 Signal #1 Info : 30M x 0.32mm x0.2 Signal #2 Info : 30M x 0.32mm x 0.50µm

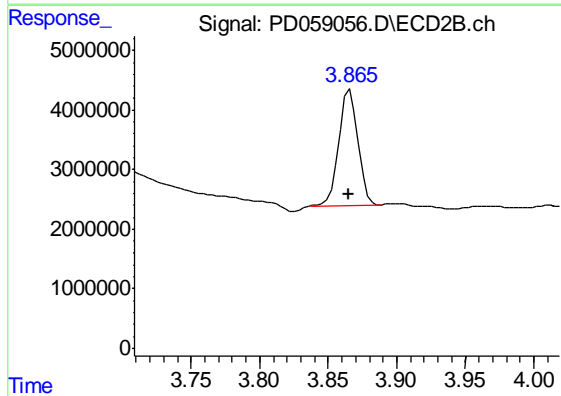




#1 Tetrachloro-m-xylene

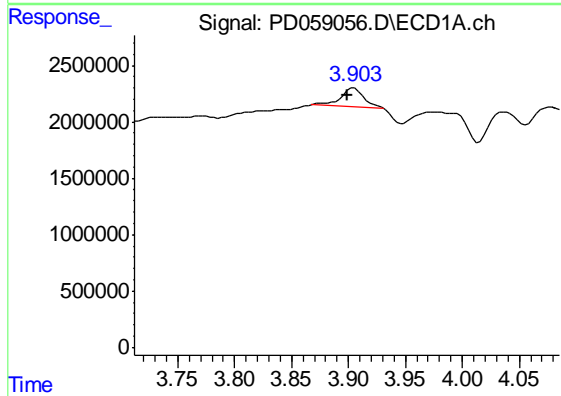
R.T.: 3.207 min
 Delta R.T.: 0.000 min
 Response: 12327312
 Conc: 12.75 ng/ml

Instrument :
 ECD_D
 ClientSampleID :
 DBFR6



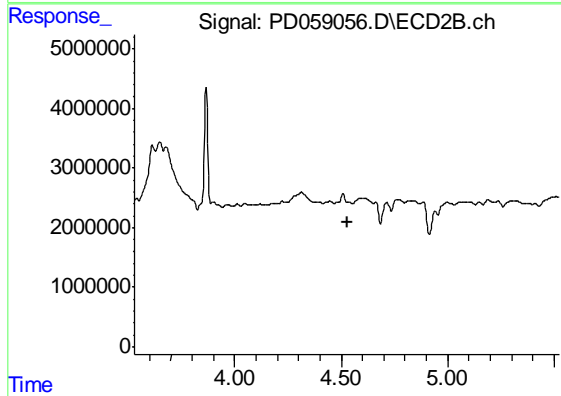
#1 Tetrachloro-m-xylene

R.T.: 3.866 min
 Delta R.T.: 0.001 min
 Response: 18932160
 Conc: 13.07 ng/ml



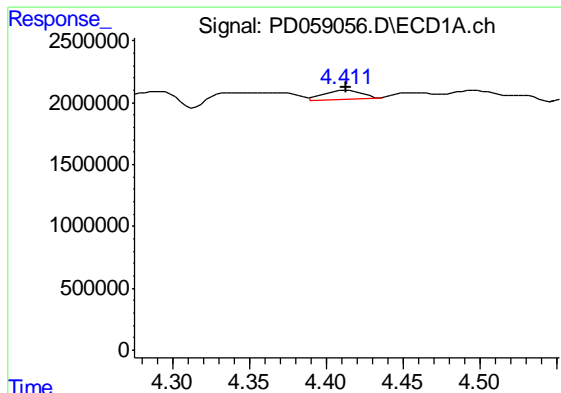
#3 gamma-BHC (Lindane)

R.T.: 3.905 min
 Delta R.T.: 0.006 min
 Response: 2390666
 Conc: 1.72 ng/ml



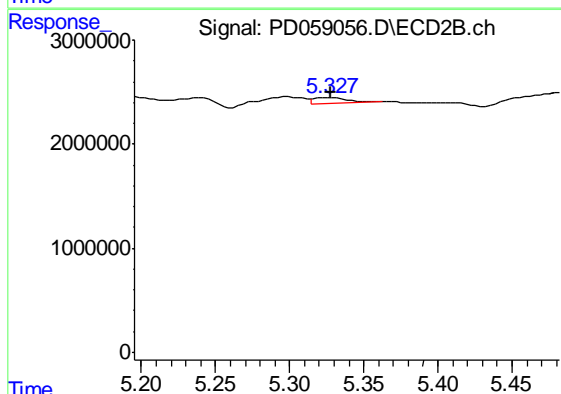
#3 gamma-BHC (Lindane)

R.T.: 0.000 min
 Exp R.T. : 4.528 min
 Response: 0
 Conc: N.D.

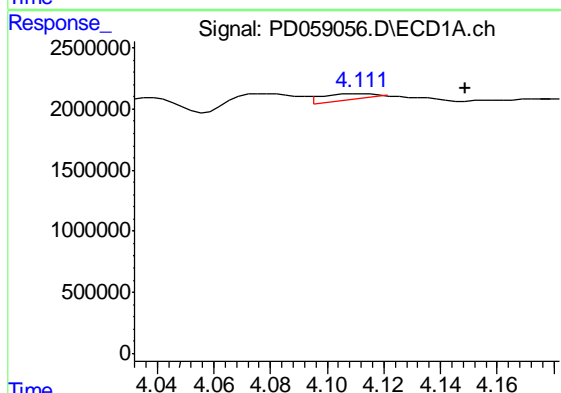


#5 Aldrin
 R.T.: 4.413 min
 Delta R.T.: 0.000 min
 Response: 1266525
 Conc: 1.02 ng/ml

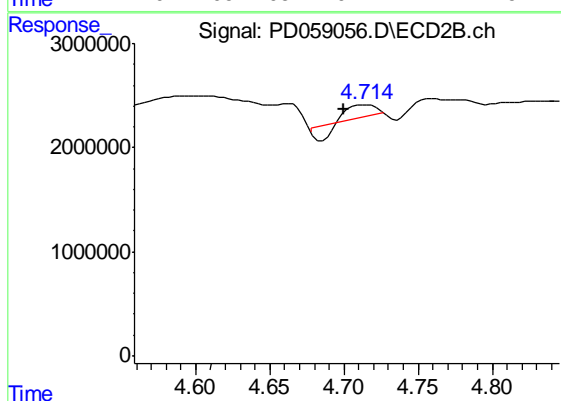
Instrument :
 ECD_D
 ClientSampleId :
 DBFR6



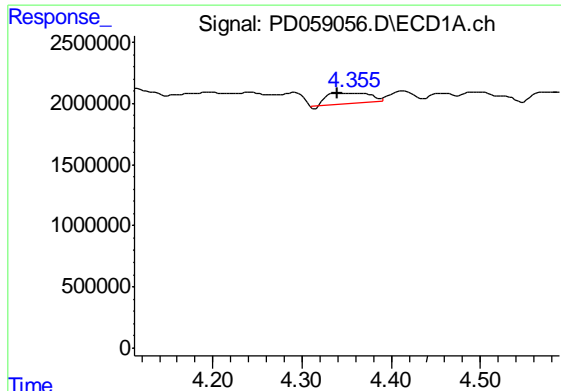
#5 Aldrin
 R.T.: 5.328 min
 Delta R.T.: 0.000 min
 Response: 948114
 Conc: 0.51 ng/ml



#6 beta-BHC
 R.T.: 4.113 min
 Delta R.T.: -0.036 min
 Response: 565763
 Conc: 0.96 ng/ml

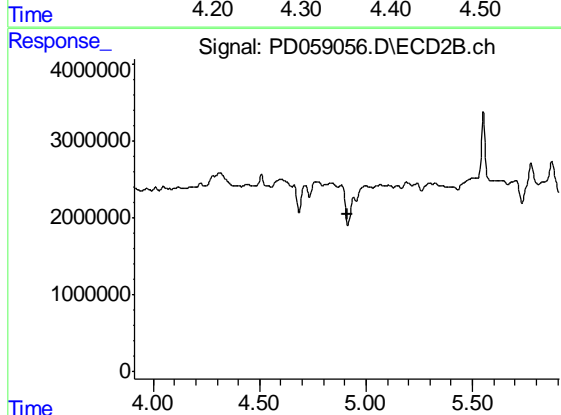


#6 beta-BHC
 R.T.: 4.715 min
 Delta R.T.: 0.015 min
 Response: 818658
 Conc: 0.94 ng/ml

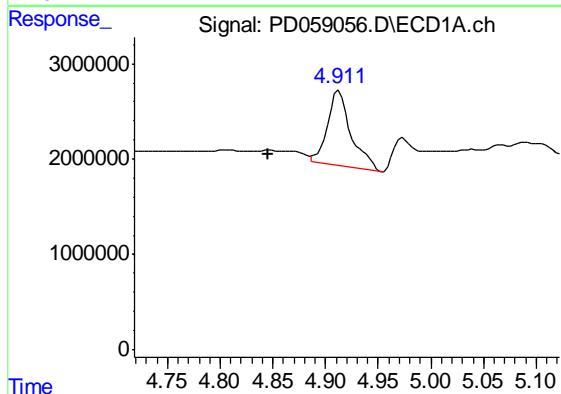


#7 delta-BHC
 R.T.: 4.358 min
 Delta R.T.: 0.019 min
 Response: 2893357
 Conc: 2.16 ng/ml

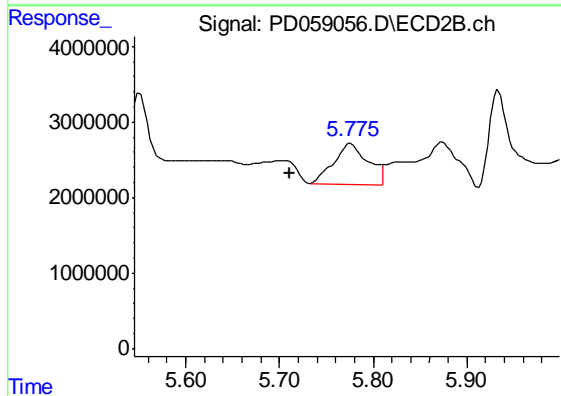
Instrument :
 ECD_D
 ClientSampled :
 DBFR6



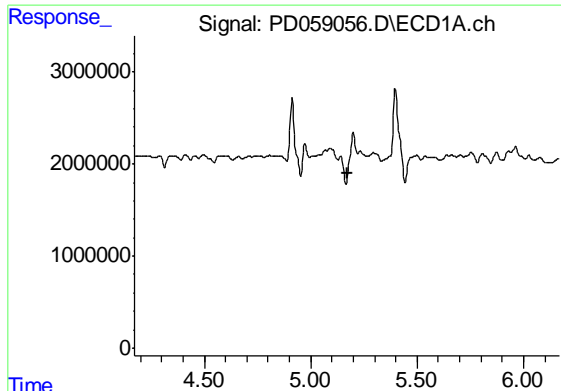
#7 delta-BHC
 R.T.: 4.942 min
 Delta R.T.: 0.031 min
 Response: -5469424
 Conc: N.D.



#8 Heptachlor epoxide
 R.T.: 4.913 min
 Delta R.T.: 0.067 min
 Response: 12204852
 Conc: 10.80 ng/ml



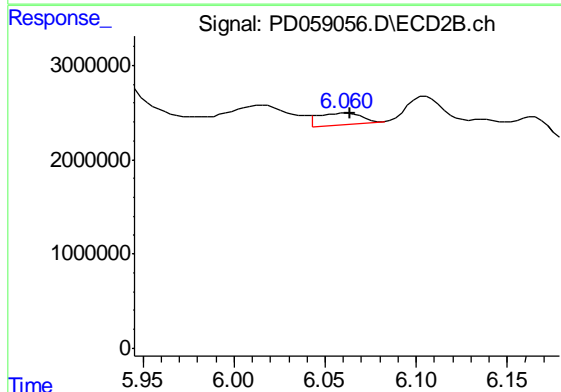
#8 Heptachlor epoxide
 R.T.: 5.776 min
 Delta R.T.: 0.065 min
 Response: 13655353
 Conc: 8.20 ng/ml



#9 Endosulfan I

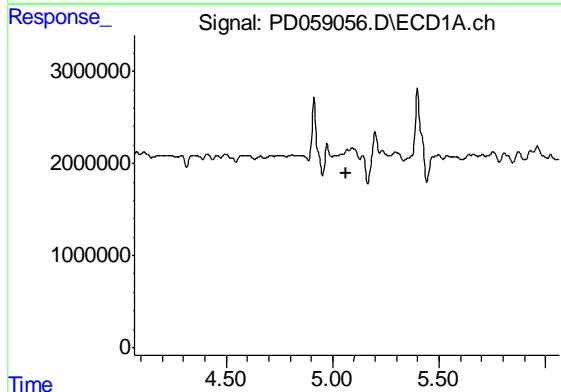
R.T.: 5.201 min
 Delta R.T.: 0.029 min
 Response: -216306
 Conc: N.D.

Instrument :
 ECD_D
 ClientSampled :
 DBFR6



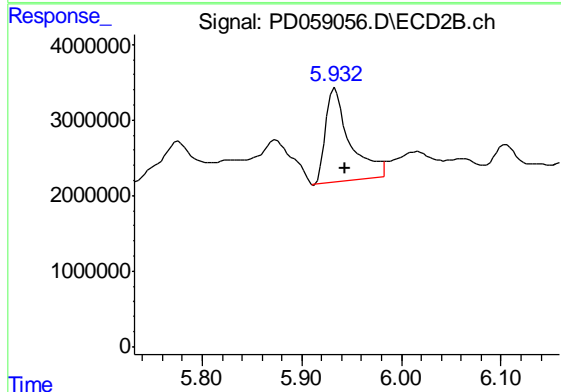
#9 Endosulfan I

R.T.: 6.062 min
 Delta R.T.: -0.002 min
 Response: 2244630
 Conc: 1.45 ng/ml



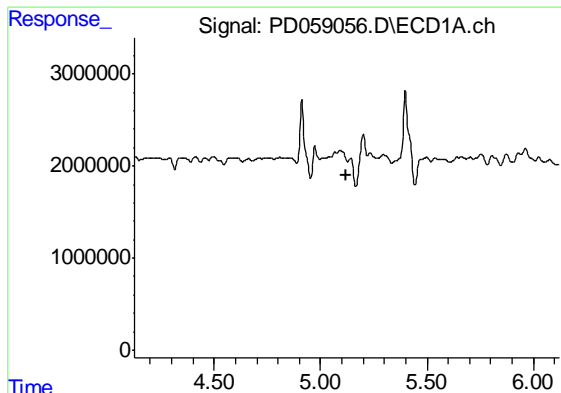
#10 trans-Chlordane

R.T.: 0.000 min
 Exp R.T. : 5.065 min
 Response: 0
 Conc: N.D.



#10 trans-Chlordane

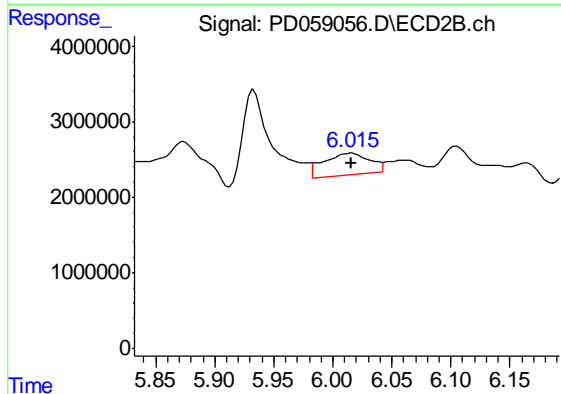
R.T.: 5.934 min
 Delta R.T.: -0.010 min
 Response: 20720843
 Conc: 12.44 ng/ml



#11 cis-Chlordane

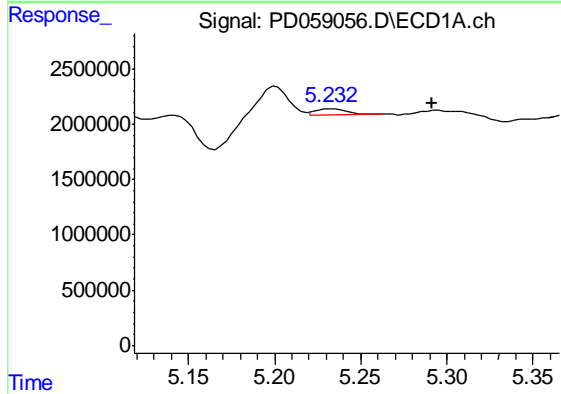
R.T.: 0.000 min
 Exp R.T. : 5.122 min
 Response: 0
 Conc: N.D.

Instrument :
 ECD_D
 ClientSampleId :
 DBFR6



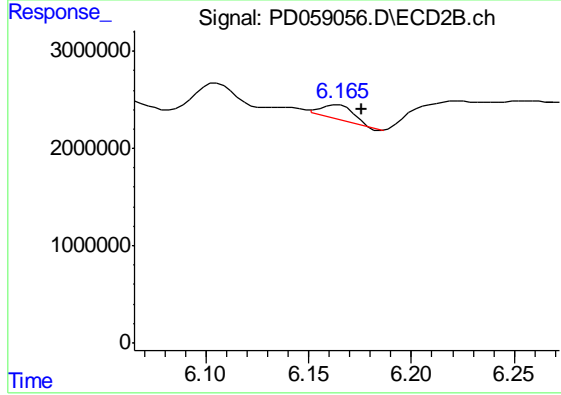
#11 cis-Chlordane

R.T.: 6.016 min
 Delta R.T.: 0.000 min
 Response: 7838747
 Conc: 4.66 ng/ml



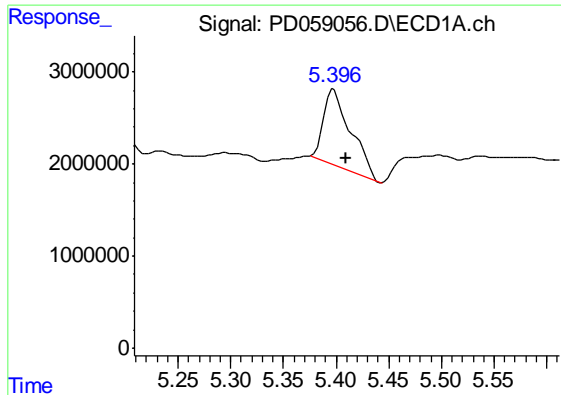
#12 4,4'-DDE

R.T.: 5.233 min
 Delta R.T.: -0.058 min
 Response: 765992
 Conc: 0.67 ng/ml



#12 4,4'-DDE

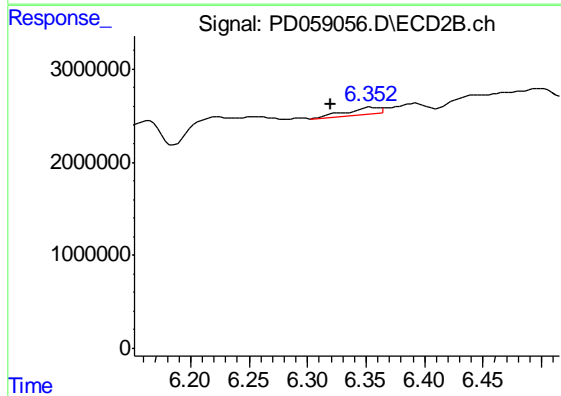
R.T.: 6.164 min
 Delta R.T.: -0.012 min
 Response: 1741216
 Conc: 1.10 ng/ml



#13 Dieldrin

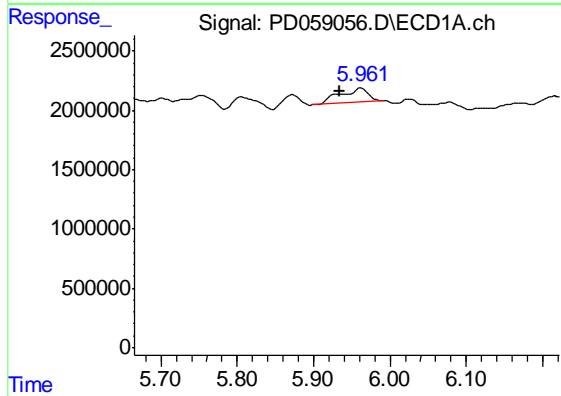
R.T.: 5.398 min
 Delta R.T.: -0.012 min
 Response: 14866796
 Conc: 12.24 ng/ml

Instrument :
 ECD_D
 ClientSampleId :
 DBFR6



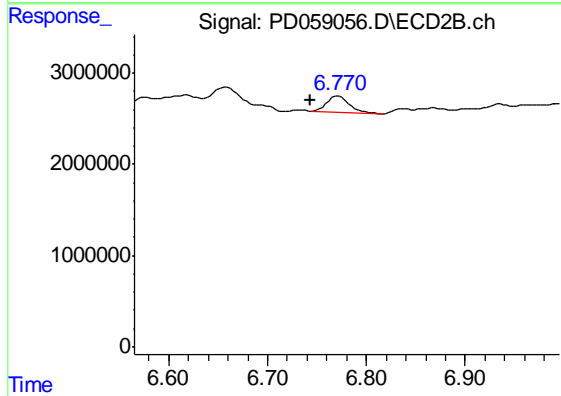
#13 Dieldrin

R.T.: 6.353 min
 Delta R.T.: 0.034 min
 Response: 1378569
 Conc: 0.82 ng/ml



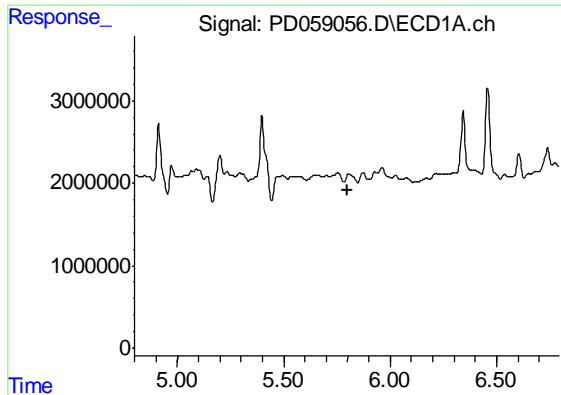
#15 Endosulfan II

R.T.: 5.963 min
 Delta R.T.: 0.029 min
 Response: 3001895
 Conc: 2.95 ng/ml



#15 Endosulfan II

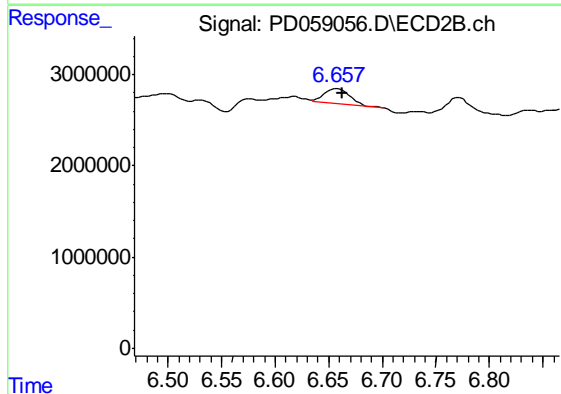
R.T.: 6.772 min
 Delta R.T.: 0.028 min
 Response: 2710963
 Conc: 1.93 ng/ml



#16 4,4'-DDD

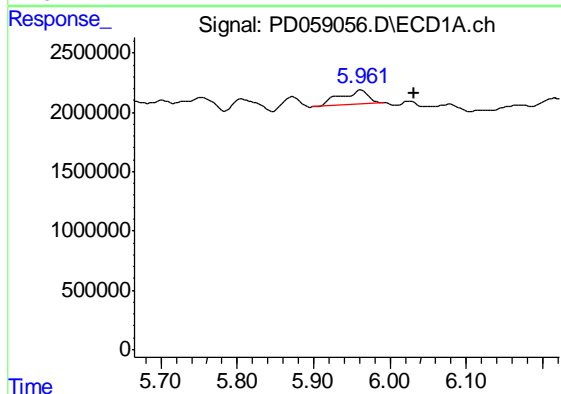
R.T.: 0.000 min
 Exp R.T. : 5.798 min
 Response: 0
 Conc: N.D.

Instrument :
 ECD_D
 ClientSampled :
 DBFR6



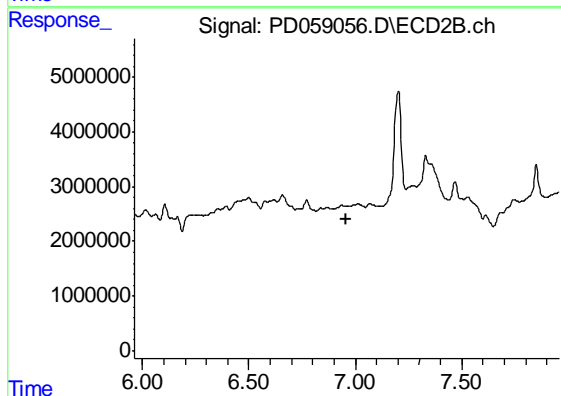
#16 4,4'-DDD

R.T.: 6.658 min
 Delta R.T.: -0.005 min
 Response: 2751638
 Conc: 2.10 ng/ml



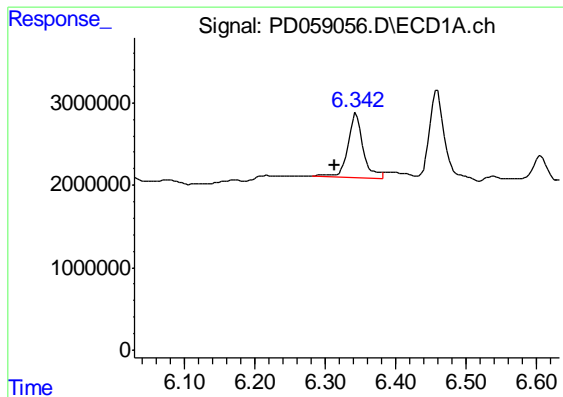
#17 4,4'-DDT

R.T.: 5.963 min
 Delta R.T.: -0.069 min
 Response: 3001895
 Conc: 3.34 ng/ml



#17 4,4'-DDT

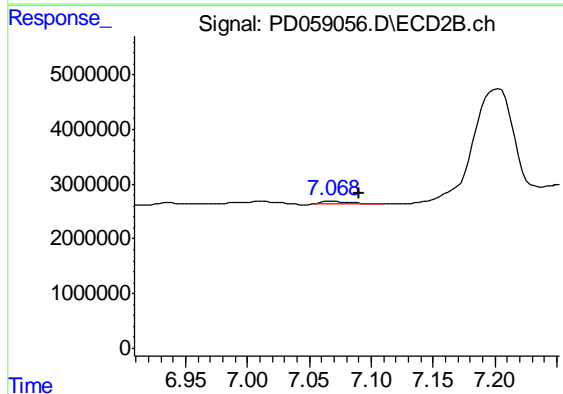
R.T.: 0.000 min
 Exp R.T. : 6.960 min
 Response: 0
 Conc: N.D.



#19 Endosulfan Sulfate

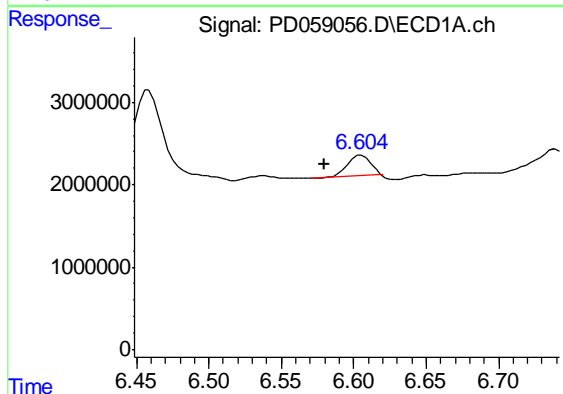
R.T.: 6.344 min
 Delta R.T.: 0.031 min
 Response: 11442864
 Conc: 11.18 ng/ml

Instrument :
 ECD_D
 ClientSampled :
 DBFR6



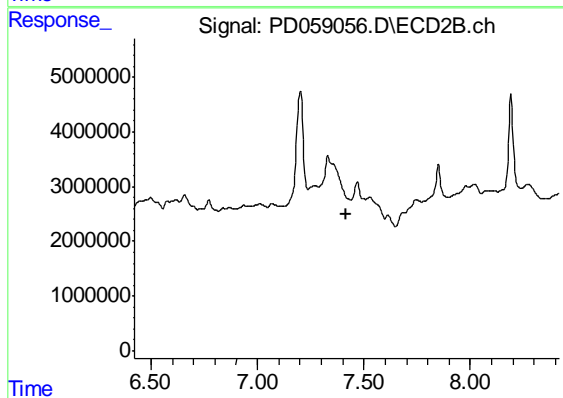
#19 Endosulfan Sulfate

R.T.: 7.069 min
 Delta R.T.: -0.021 min
 Response: 988463
 Conc: 0.69 ng/ml



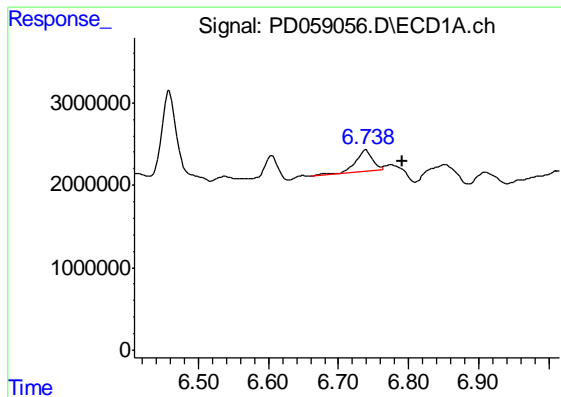
#20 Methoxychlor

R.T.: 6.605 min
 Delta R.T.: 0.026 min
 Response: 2763949
 Conc: 6.12 ng/ml



#20 Methoxychlor

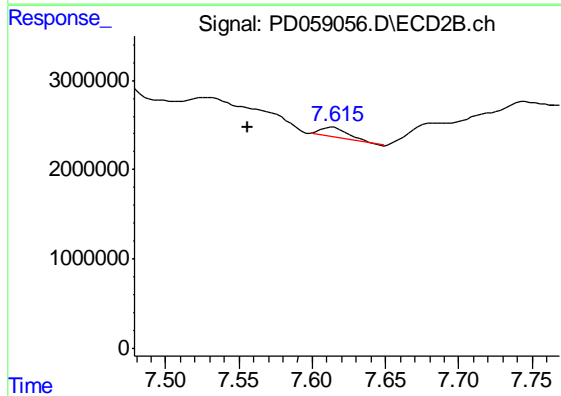
R.T.: 0.000 min
 Exp R.T. : 7.420 min
 Response: 0
 Conc: N.D.



#21 Endrin ketone

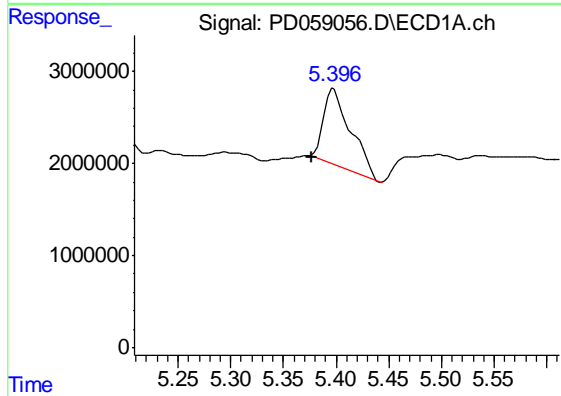
R.T.: 6.740 min
 Delta R.T.: -0.052 min
 Response: 4436392
 Conc: 3.96 ng/ml

Instrument :
 ECD_D
 ClientSampled :
 DBFR6



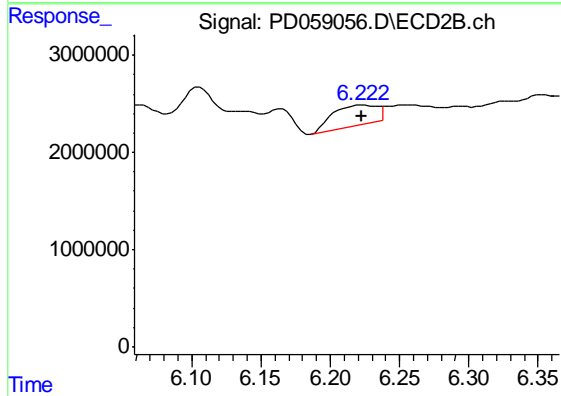
#21 Endrin ketone

R.T.: 7.614 min
 Delta R.T.: 0.058 min
 Response: 1441976
 Conc: 0.99 ng/ml



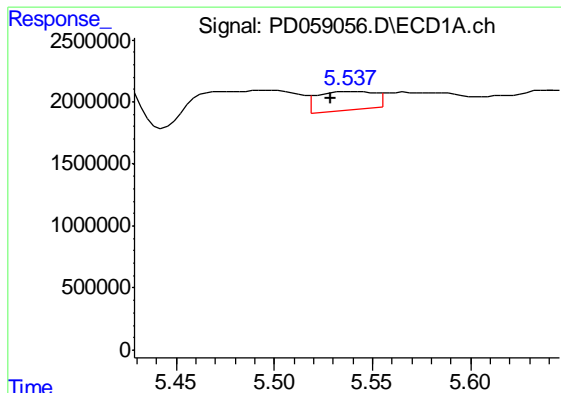
#22 Toxaphene-1

R.T.: 5.398 min
 Delta R.T.: 0.021 min
 Response: 14866796
 Conc: 2336.83 ng/ml



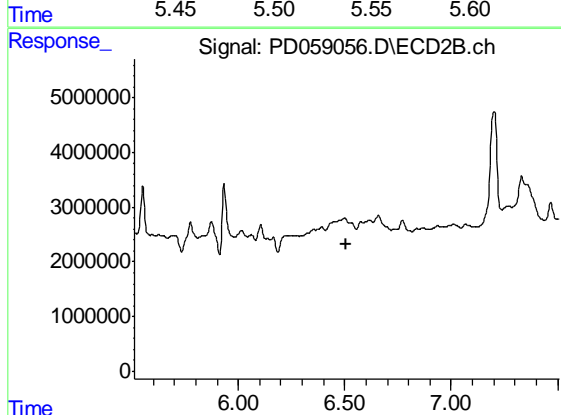
#22 Toxaphene-1

R.T.: 6.223 min
 Delta R.T.: 0.000 min
 Response: 4585180
 Conc: 540.73 ng/ml

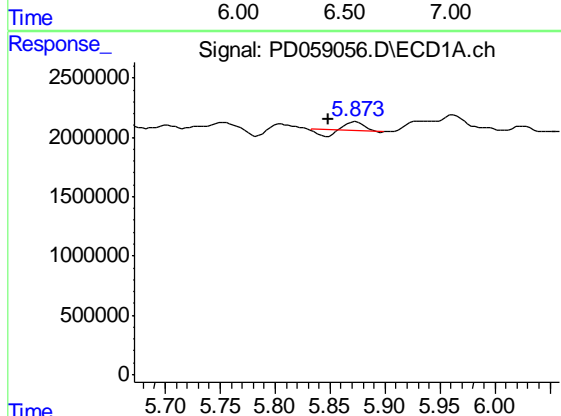


#23 Toxaphene-2
 R.T.: 5.539 min
 Delta R.T.: 0.009 min
 Response: 3045837
 Conc: 420.95 ng/ml

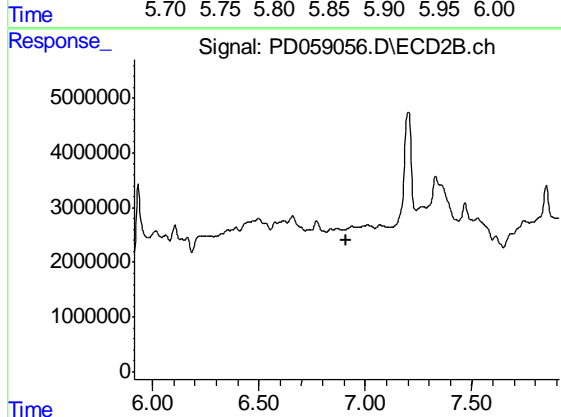
Instrument :
 ECD_D
 ClientSampleId :
 DBFR6



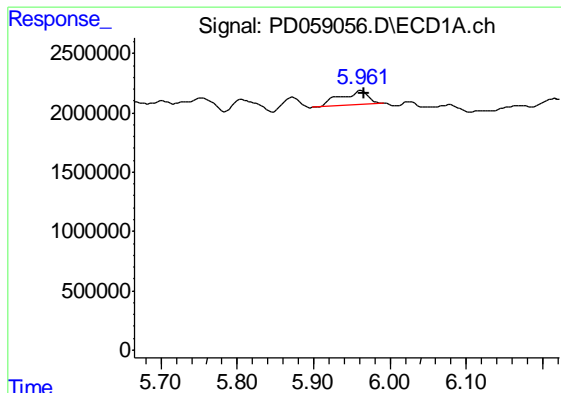
#23 Toxaphene-2
 R.T.: 0.000 min
 Exp R.T. : 6.509 min
 Response: 0
 Conc: N.D.



#24 Toxaphene-3
 R.T.: 5.874 min
 Delta R.T.: 0.026 min
 Response: 448717
 Conc: 81.58 ng/ml



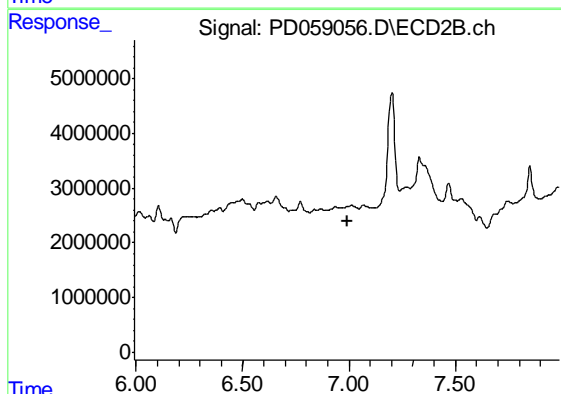
#24 Toxaphene-3
 R.T.: 0.000 min
 Exp R.T. : 6.913 min
 Response: 0
 Conc: N.D.



#25 Toxaphene-4

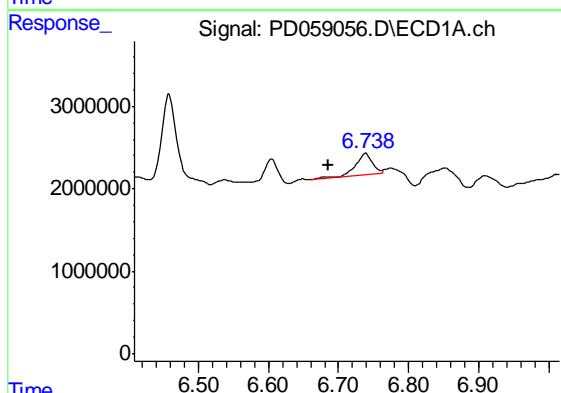
R.T.: 5.963 min
Delta R.T.: -0.004 min
Response: 3001895
Conc: 161.35 ng/ml

Instrument :
ECD_D
ClientSampleId :
DBFR6



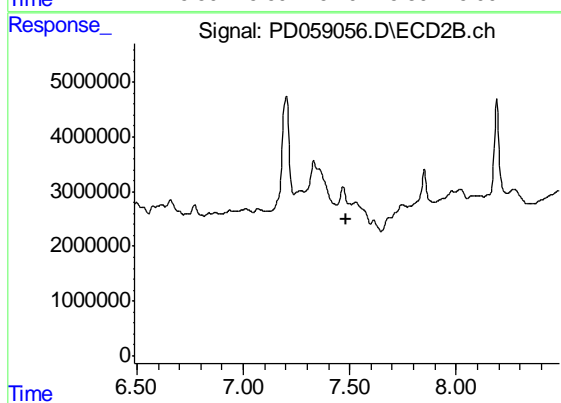
#25 Toxaphene-4

R.T.: 0.000 min
Exp R.T. : 6.991 min
Response: 0
Conc: N.D.



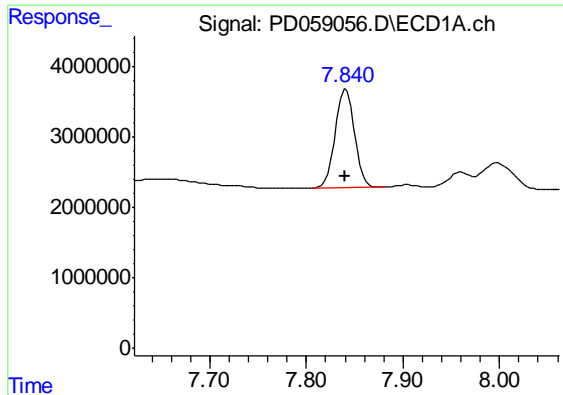
#26 Toxaphene-5

R.T.: 6.740 min
Delta R.T.: 0.054 min
Response: 4436392
Conc: 188.19 ng/ml



#26 Toxaphene-5

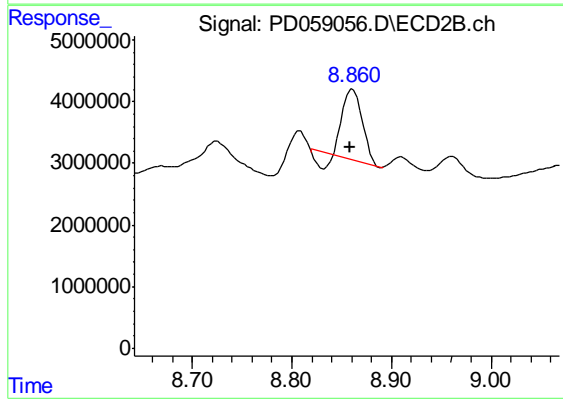
R.T.: 0.000 min
Exp R.T. : 7.486 min
Response: 0
Conc: N.D.



#27 Decachlorobiphenyl

R.T.: 7.841 min
Delta R.T.: 0.000 min
Response: 19068844
Conc: 18.10 ng/ml

Instrument :
ECD_D
ClientSampleId :
DBFR6



#27 Decachlorobiphenyl

R.T.: 8.861 min
Delta R.T.: 0.003 min
Response: 13677541
Conc: 9.97 ng/ml