

Data Path : Z:\pestpcbsrv\HPCHEM1\ECD_D\Data\PD081920\
 Data File : PD059050.D
 Signal(s) : Signal #1: ECD1A.ch Signal #2: ECD2B.ch
 Acq On : 19 Aug 2020 12:55
 Operator : DD\AJ
 Sample : L3613-13
 Misc :
 ALS Vial : 18 Sample Multiplier: 1

Instrument :
 ECD_D
ClientSampled :
 DBFR2

Manual Integrations
APPROVED
 Ankita
 8/21/2020 3:29:01 PM

Integration File signal 1: autoint1.e
 Integration File signal 2: autoint2.e
 Quant Time: Aug 21 02:10:01 2020
 Quant Method : Z:\pestpcbsrv\HPCHEM1\ECD_D\Method\PD080620CLP.M
 Quant Title : GC Extractables
 QLast Update : Thu Aug 06 11:29:05 2020
 Response via : Initial Calibration
 Integrator: ChemStation

Volume Inj. : 1 µl
 Signal #1 Phase : ZB-MR2 Signal #2 Phase: ZB-MR1
 Signal #1 Info : 30M x 0.32mm x0.2 Signal #2 Info : 30M x 0.32mm x 0.50µm

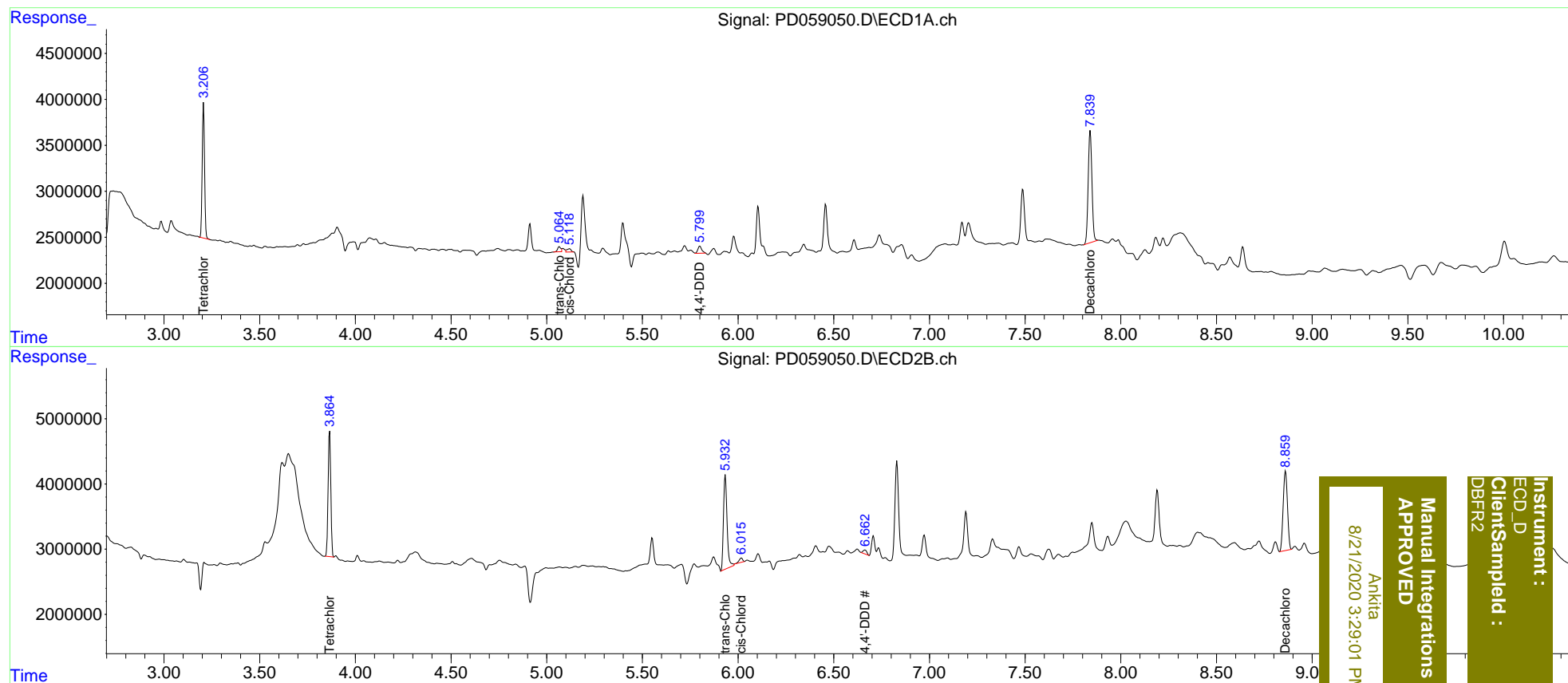
| Compound | RT#1 | RT#2 | Resp#1 | Resp#2 | ng/ml | ng/ml |
|-----------------------------|-------|-------|----------|----------|--------|----------|
| ----- | | | | | | |
| System Monitoring Compounds | | | | | | |
| 1) SA Tetrachlo... | 3.207 | 3.866 | 12450208 | 18747106 | 12.874 | 12.945 |
| 27) SA Decachlor... | 7.840 | 8.861 | 16649567 | 18938916 | 15.807 | 13.810 |
| Target Compounds | | | | | | |
| 10) B trans-Chl... | 5.064 | 5.933 | 627083 | 18645036 | 0.542m | 11.193 # |
| 11) B cis-Chlor... | 5.118 | 6.015 | 537602 | 865307 | 0.462m | 0.514m |
| 16) A 4,4'-DDD | 5.799 | 6.662 | 1104646 | 839700 | 1.171m | 0.641m# |
| ----- | | | | | | |

(f)=RT Delta > 1/2 Window (#)=Amounts differ by > 25% (m)=manual int.

Data Path : Z:\pestpcbsrv\HPCHEM1\ECD_D\Data\PD081920\
 Data File : PD059050.D
 Signal(s) : Signal #1: ECD1A.ch Signal #2: ECD2B.ch
 Acq On : 19 Aug 2020 12:55
 Operator : DD\AJ
 Sample : L3613-13
 Misc :
 ALS Vial : 18 Sample Multiplier: 1

Integration File signal 1: autoint1.e
 Integration File signal 2: autoint2.e
 Quant Time: Aug 21 02:10:01 2020
 Quant Method : Z:\pestpcbsrv\HPCHEM1\ECD_D\Method\PD080620CLP.M
 Quant Title : GC Extractables
 QLast Update : Thu Aug 06 11:29:05 2020
 Response via : Initial Calibration
 Integrator: ChemStation

Volume Inj. : 1 µl
 Signal #1 Phase : ZB-MR2 Signal #2 Phase: ZB-MR1
 Signal #1 Info : 30M x 0.32mm x0.2 Signal #2 Info : 30M x 0.32mm x 0.50µm



Instrument :
 ECD_D
 ClientSampleId :
 DBFR2

Manual Integrations
 APPROVED
 Ankitia
 8/21/2020 3:29:01 PM