

Data Path : Z:\pestpcbsrv\HPCHEM1\ECD_D\Data\PD081923\
 Data File : PD077238.D
 Signal(s) : Signal #1: ECD1A.ch Signal #2: ECD2B.ch
 Acq On : 17 Aug 2023 15:36
 Operator : AR\AJ
 Sample : PB154901BS
 Misc :
 ALS Vial : 5 Sample Multiplier: 1

Instrument :

ECD_D

ClientSampleId :

PB154901BS

Manual Integrations

APPROVED

Reviewed By :Abdul Mirza 08/18/2023
 Supervised By :Ankita Jodhani 08/18/2023

Integration File signal 1: autoint1.e
 Integration File signal 2: autoint2.e
 Quant Time: Aug 17 21:40:02 2023
 Quant Method : Z:\pestpcbsrv\HPCHEM1\ECD_D\Method\PD080323.M
 Quant Title : GC Extractables
 QLast Update : Thu Aug 03 14:17:41 2023
 Response via : Initial Calibration
 Integrator: ChemStation

Volume Inj. : 1 µl
 Signal #1 Phase : ZB-MR1 Signal #2 Phase: ZB-MR2
 Signal #1 Info : 30M x 0.32mm x0.5 Signal #2 Info : 30M x 0.32mm x 0.25µm

Compound	RT#1	RT#2	Resp#1	Resp#2	ng/ml	ng/ml

System Monitoring Compounds						
1) SA Tetrachlo...	3.551	2.761	41573925	23780913	17.568	17.459
28) SA Decachlor...	9.099	7.907	56673997	27448587	20.683	19.180
Target Compounds						
2) A alpha-BHC	4.009	3.263	33797840	16952397	8.802	8.764
3) MA gamma-BHC...	4.343	3.593	31331044	16461083	8.512	8.848
4) MA Heptachlor	4.934	3.933	33709223	17385435	9.348	9.570
5) MB Aldrin	5.277	4.214	32474920	17788074	8.787	9.607
6) B beta-BHC	4.540	3.892	14706713	7536377	9.773	9.879
7) B delta-BHC	4.788	4.121	34145923	16197279	9.788	9.103
8) B Heptachlo...	5.704	4.717	36720632	15393604	11.090	9.205
9) A Endosulfan I	6.092	5.086	29489204	14420039	9.703	9.244
10) B gamma-Chl...	5.962	4.967	31051843	15631442	9.541	9.423
11) B alpha-Chl...	6.041	5.032	31556112	15824230	9.623	9.476
12) B 4,4'-DDE	6.213	5.219	26771510	13018386	9.025	8.977m
13) MA Dieldrin	6.367	5.352	29963570	15070774	9.153	8.946
14) MA Endrin	6.598	5.628	25448624	13818953	9.158	9.444
15) B Endosulfa...	6.818	5.922	26141376	12686955	8.216	8.607
16) A 4,4'-DDD	6.731	5.776	22346681	10370208	9.499	9.325
17) MA 4,4'-DDT	7.048	6.027	22333937	9937897	9.185	8.940
18) B Endrin al...	6.948	6.103	20318106	10461961	9.301	9.190
19) B Endosulfa...	7.183	6.326	25934853	13131721	9.954	9.846
20) A Methoxychlor	7.523	6.604	12974876	5374675	9.157	8.989
21) B Endrin ke...	7.670	6.833	30467466	14401284	10.116	9.083
22) Mirex	8.145	7.014	24890656	12868583	10.913	9.939

(f)=RT Delta > 1/2 Window (#)=Amounts differ by > 25% (m)=manual int.

Data Path : Z:\pestpcbsrv\HPCHEM1\ECD_D\Data\PD081923\
 Data File : PD077238.D
 Signal(s) : Signal #1: ECD1A.ch Signal #2: ECD2B.ch
 Acq On : 17 Aug 2023 15:36
 Operator : AR\AJ
 Sample : PB154901BS
 Misc :
 ALS Vial : 5 Sample Multiplier: 1

Instrument :

ECD_D

Client Sample Id :

PB154901BS

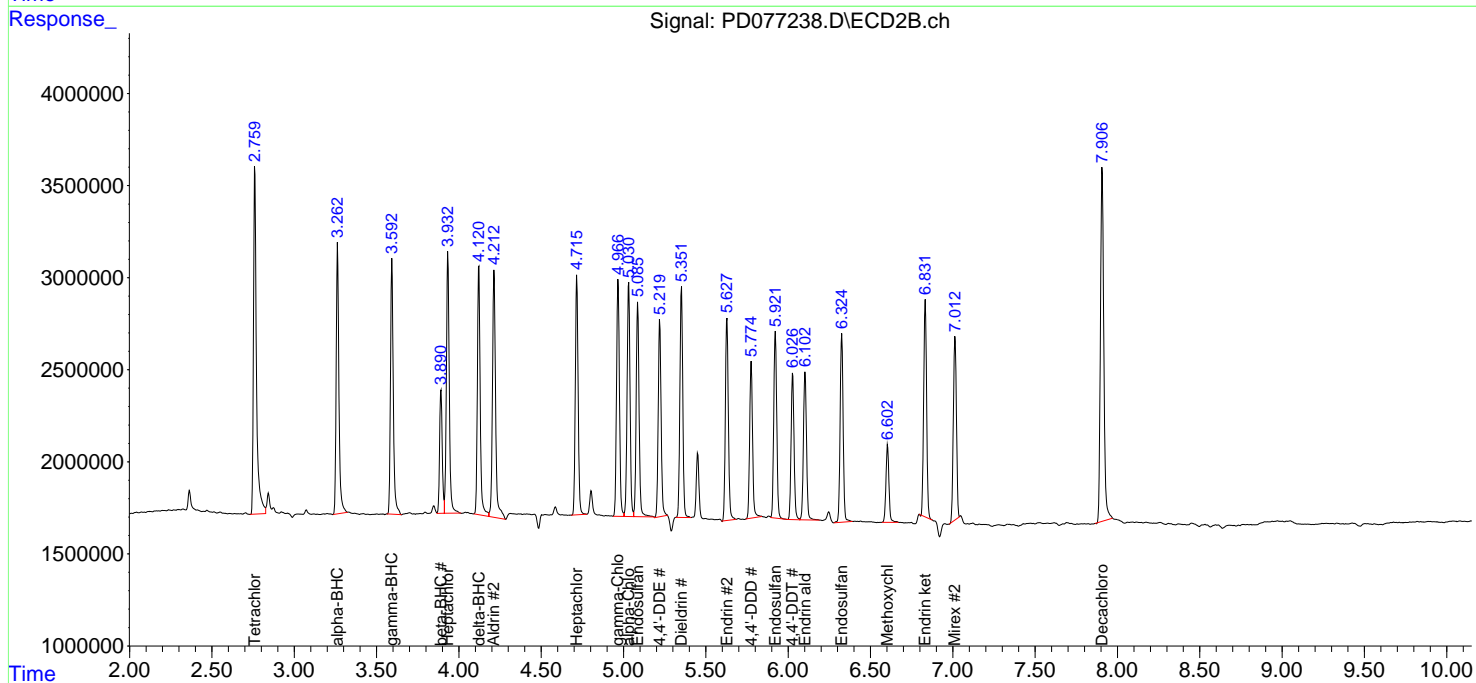
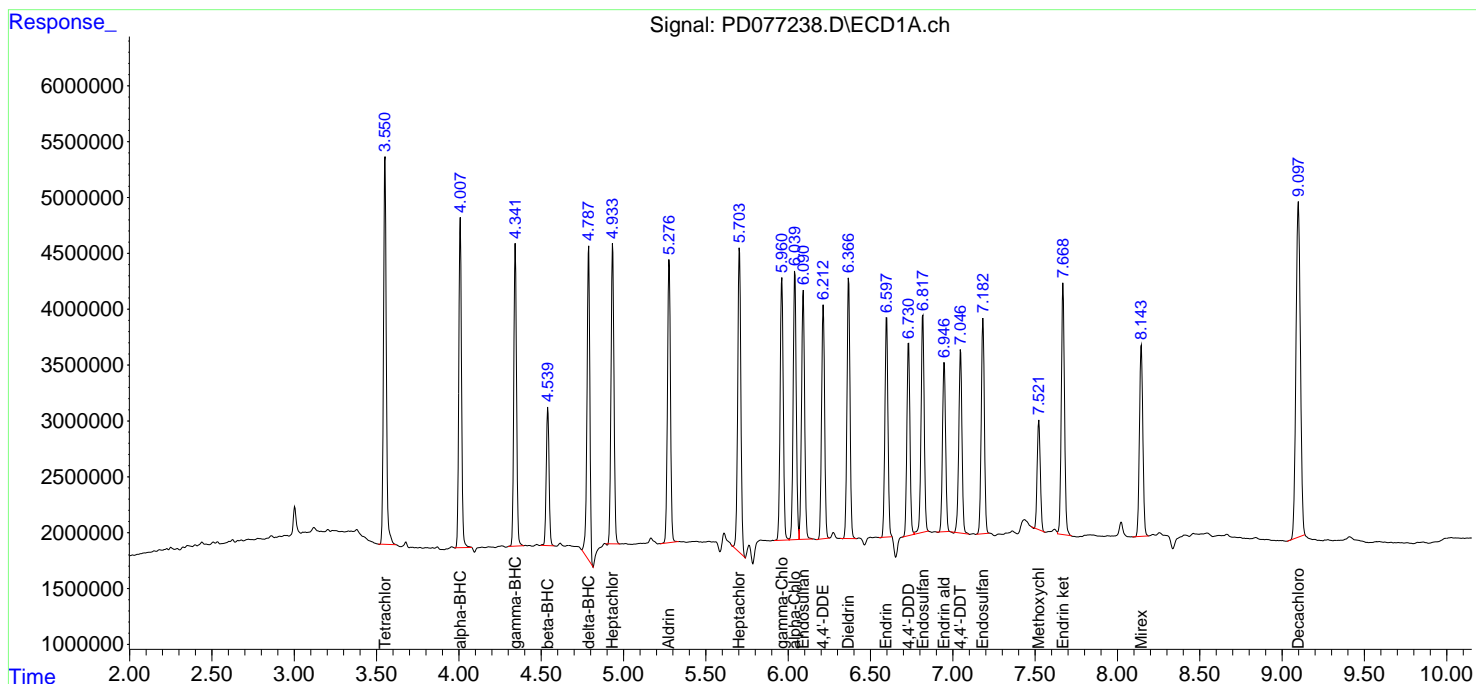
Manual Integrations

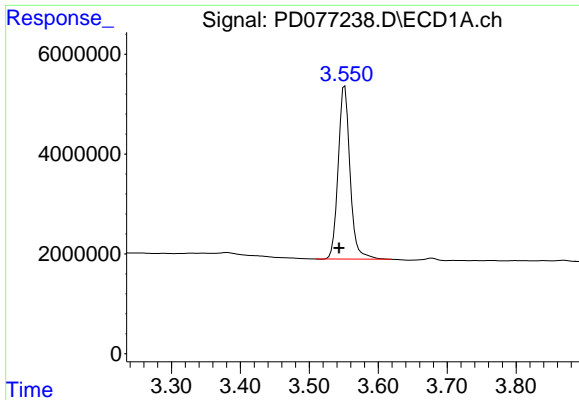
APPROVED

Reviewed By :Abdul Mirza 08/18/2023
 Supervised By :Ankita Jodhani 08/18/2023

Integration File signal 1: autoint1.e
 Integration File signal 2: autoint2.e
 Quant Time: Aug 17 21:40:02 2023
 Quant Method : Z:\pestpcbsrv\HPCHEM1\ECD_D\Method\PD080323.M
 Quant Title : GC Extractables
 QLast Update : Thu Aug 03 14:17:41 2023
 Response via : Initial Calibration
 Integrator: ChemStation

Volume Inj. : 1 µl
 Signal #1 Phase : ZB-MR1 Signal #2 Phase: ZB-MR2
 Signal #1 Info : 30M x 0.32mm x0.5 Signal #2 Info : 30M x 0.32mm x 0.25µm





#1 Tetrachloro-m-xylene

R.T.: 3.551 min
 Delta R.T.: 0.008 min
 Response: 41573925
 Conc: 17.57 ng/ml

Instrument :

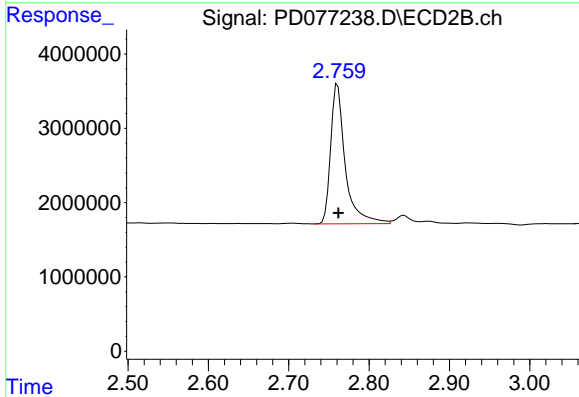
ECD_D

ClientSampleId :

PB154901BS

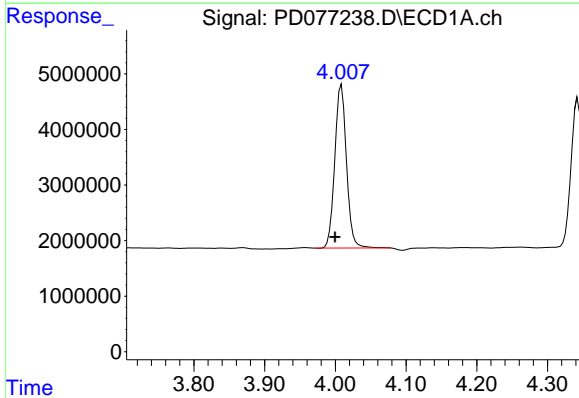
Manual Integrations
 APPROVED

Reviewed By :Abdul Mirza 08/18/2023
 Supervised By :Ankita Jodhani 08/18/2023



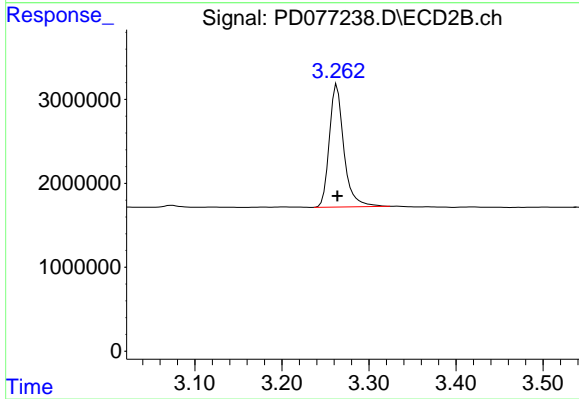
#1 Tetrachloro-m-xylene

R.T.: 2.761 min
 Delta R.T.: 0.000 min
 Response: 23780913
 Conc: 17.46 ng/ml



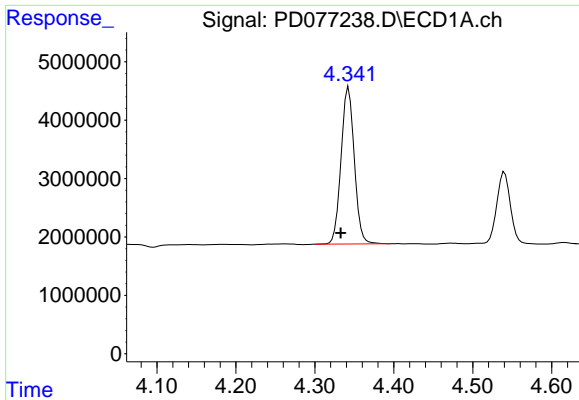
#2 alpha-BHC

R.T.: 4.009 min
 Delta R.T.: 0.009 min
 Response: 33797840
 Conc: 8.80 ng/ml



#2 alpha-BHC

R.T.: 3.263 min
 Delta R.T.: 0.000 min
 Response: 16952397
 Conc: 8.76 ng/ml

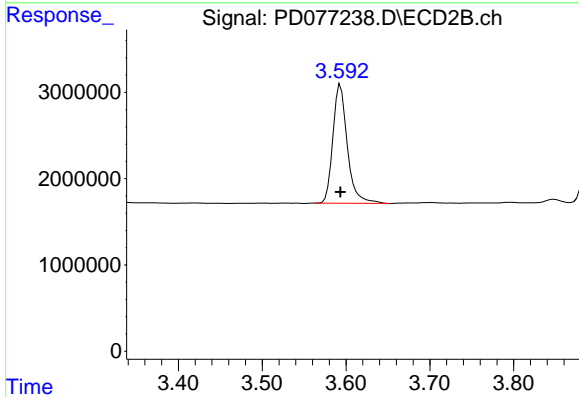


#3 gamma-BHC (Lindane)
 R.T.: 4.343 min
 Delta R.T.: 0.010 min
 Response: 31331044
 Conc: 8.51 ng/ml

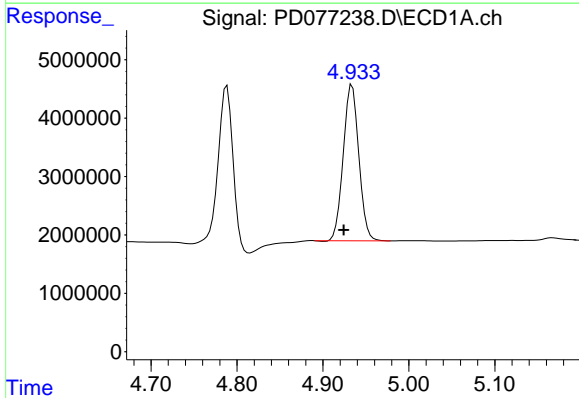
Instrument :
 ECD_D
 ClientSampleId :
 PB154901BS

Manual Integrations
 APPROVED

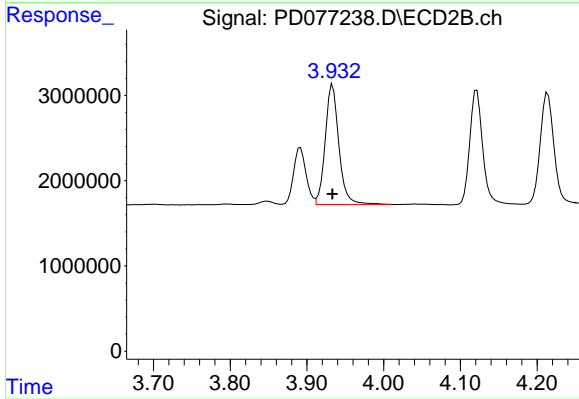
Reviewed By :Abdul Mirza 08/18/2023
 Supervised By :Ankita Jodhani 08/18/2023



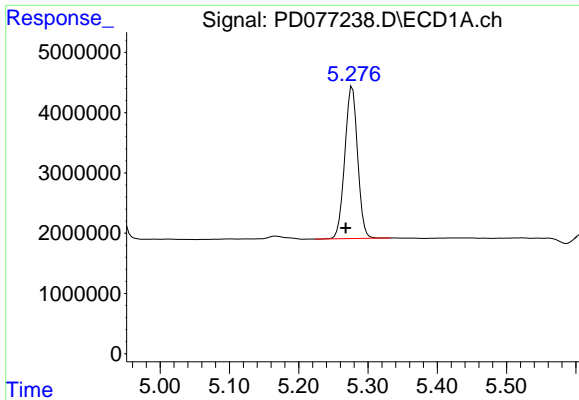
#3 gamma-BHC (Lindane)
 R.T.: 3.593 min
 Delta R.T.: 0.000 min
 Response: 16461083
 Conc: 8.85 ng/ml



#4 Heptachlor
 R.T.: 4.934 min
 Delta R.T.: 0.010 min
 Response: 33709223
 Conc: 9.35 ng/ml



#4 Heptachlor
 R.T.: 3.933 min
 Delta R.T.: 0.000 min
 Response: 17385435
 Conc: 9.57 ng/ml

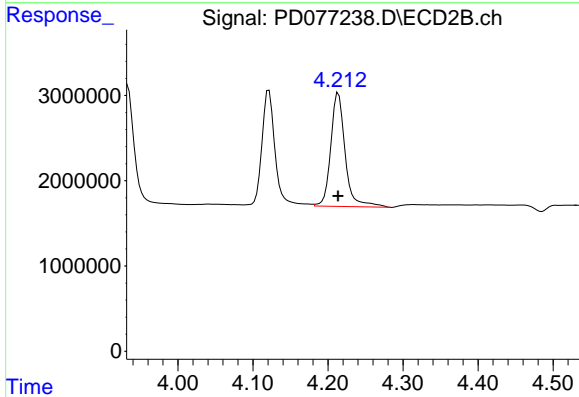


#5 Aldrin
 R.T.: 5.277 min
 Delta R.T.: 0.010 min
 Response: 32474920
 Conc: 8.79 ng/ml

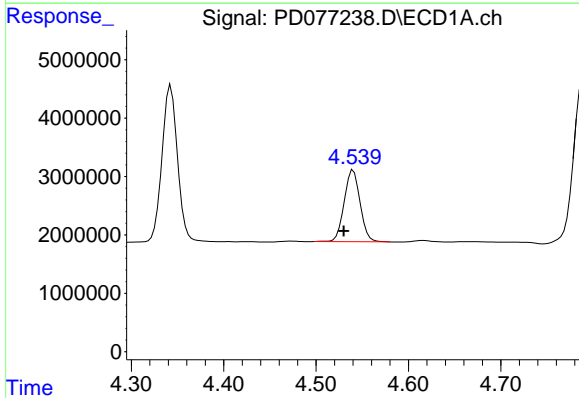
Instrument :
 ECD_D
 ClientSampleId :
 PB154901BS

Manual Integrations
 APPROVED

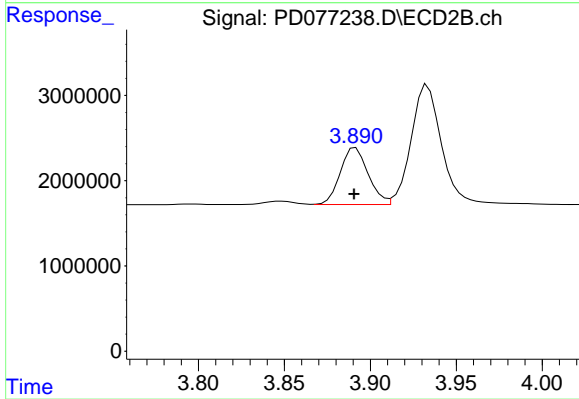
Reviewed By :Abdul Mirza 08/18/2023
 Supervised By :Ankita Jodhani 08/18/2023



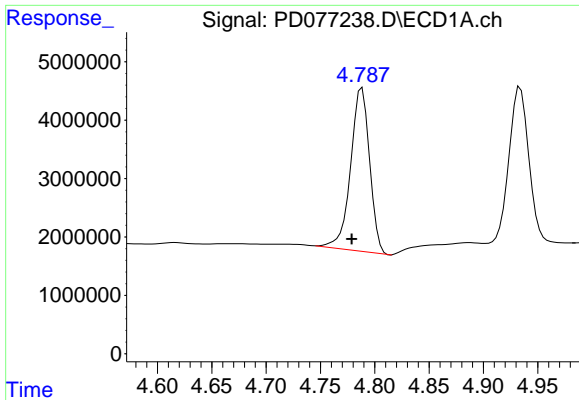
#5 Aldrin
 R.T.: 4.214 min
 Delta R.T.: 0.000 min
 Response: 17788074
 Conc: 9.61 ng/ml



#6 beta-BHC
 R.T.: 4.540 min
 Delta R.T.: 0.010 min
 Response: 14706713
 Conc: 9.77 ng/ml



#6 beta-BHC
 R.T.: 3.892 min
 Delta R.T.: 0.001 min
 Response: 7536377
 Conc: 9.88 ng/ml

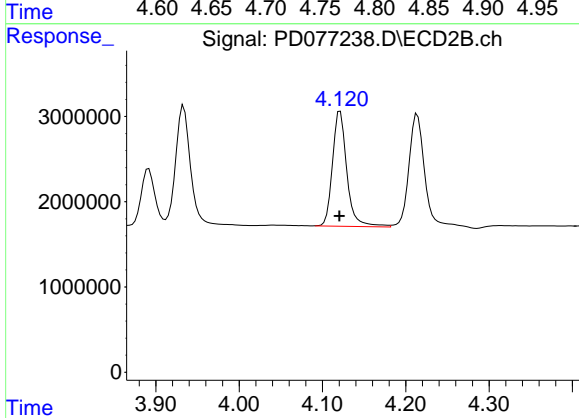


#7 delta-BHC
 R.T.: 4.788 min
 Delta R.T.: 0.010 min
 Response: 34145923
 Conc: 9.79 ng/ml

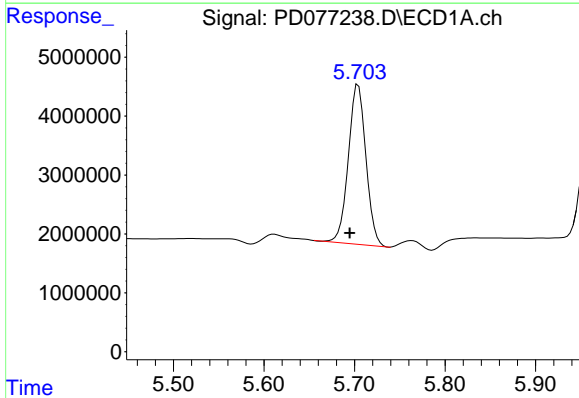
Instrument :
 ECD_D
 ClientSampleId :
 PB154901BS

Manual Integrations
 APPROVED

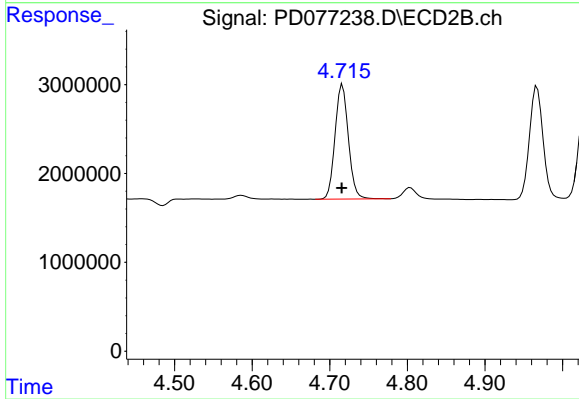
Reviewed By :Abdul Mirza 08/18/2023
 Supervised By :Ankita Jodhani 08/18/2023



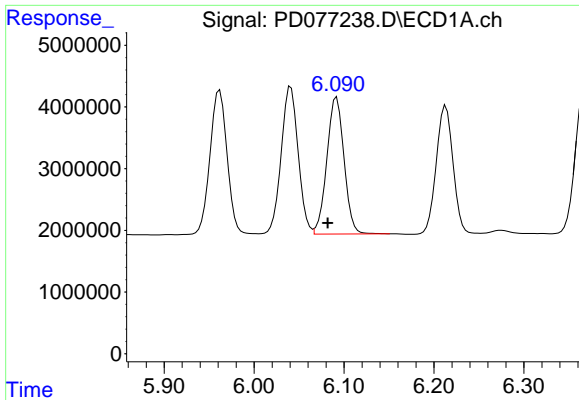
#7 delta-BHC
 R.T.: 4.121 min
 Delta R.T.: 0.000 min
 Response: 16197279
 Conc: 9.10 ng/ml



#8 Heptachlor epoxide
 R.T.: 5.704 min
 Delta R.T.: 0.009 min
 Response: 36720632
 Conc: 11.09 ng/ml



#8 Heptachlor epoxide
 R.T.: 4.717 min
 Delta R.T.: 0.000 min
 Response: 15393604
 Conc: 9.21 ng/ml



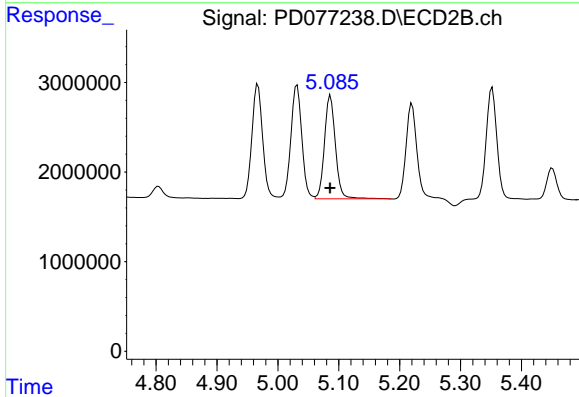
#9 Endosulfan I

R.T.: 6.092 min
 Delta R.T.: 0.010 min
 Response: 29489204
 Conc: 9.70 ng/ml

Instrument :
 ECD_D
 ClientSampleId :
 PB154901BS

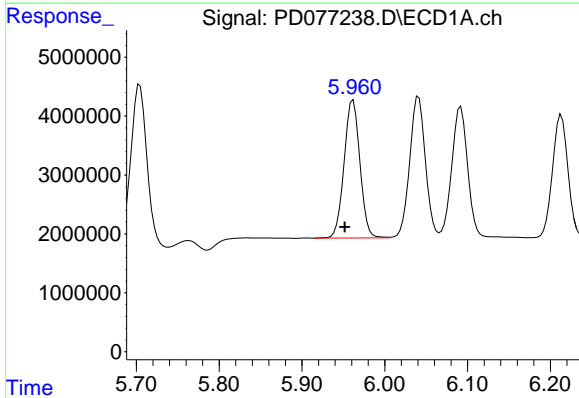
Manual Integrations
 APPROVED

Reviewed By :Abdul Mirza 08/18/2023
 Supervised By :Ankita Jodhani 08/18/2023



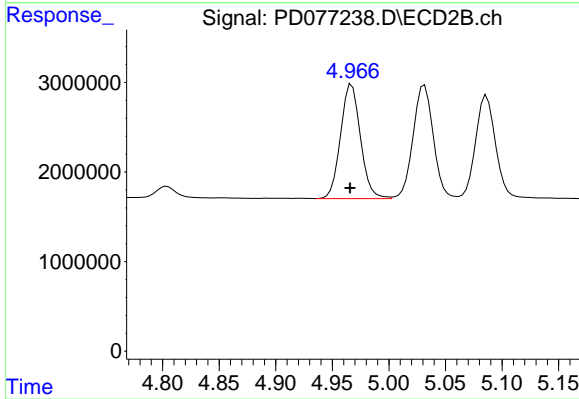
#9 Endosulfan I

R.T.: 5.086 min
 Delta R.T.: 0.000 min
 Response: 14420039
 Conc: 9.24 ng/ml



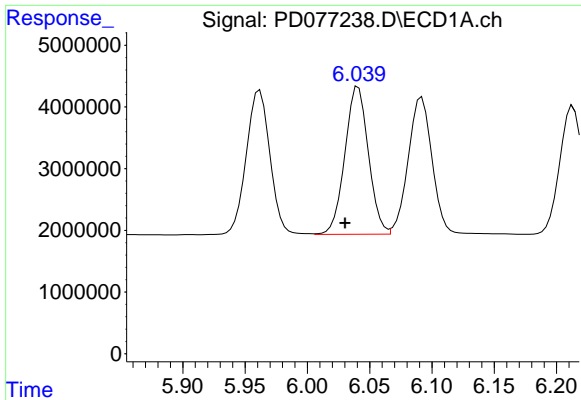
#10 gamma-Chlordane

R.T.: 5.962 min
 Delta R.T.: 0.010 min
 Response: 31051843
 Conc: 9.54 ng/ml



#10 gamma-Chlordane

R.T.: 4.967 min
 Delta R.T.: 0.001 min
 Response: 15631442
 Conc: 9.42 ng/ml



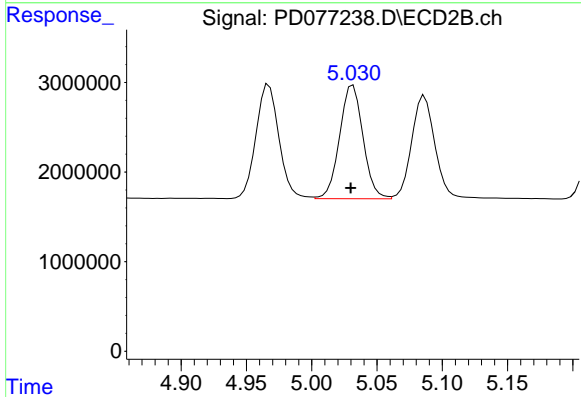
#11 alpha-Chlordane

R.T.: 6.041 min
 Delta R.T.: 0.011 min
 Response: 31556112
 Conc: 9.62 ng/ml

Instrument :
 ECD_D
 ClientSampleId :
 PB154901BS

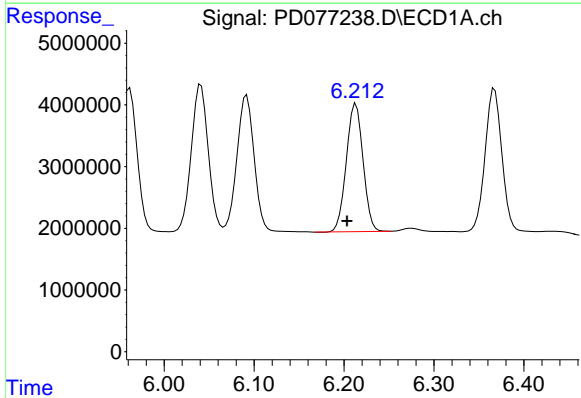
Manual Integrations
 APPROVED

Reviewed By :Abdul Mirza 08/18/2023
 Supervised By :Ankita Jodhani 08/18/2023



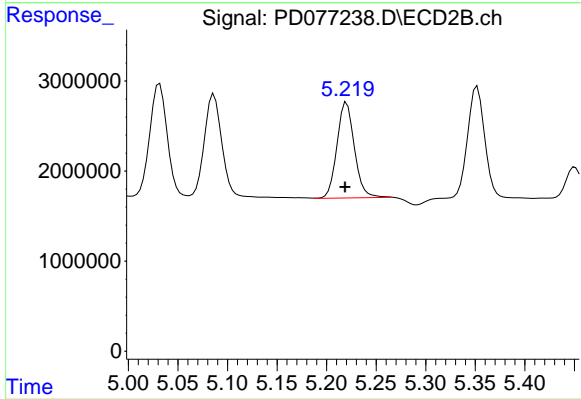
#11 alpha-Chlordane

R.T.: 5.032 min
 Delta R.T.: 0.002 min
 Response: 15824230
 Conc: 9.48 ng/ml



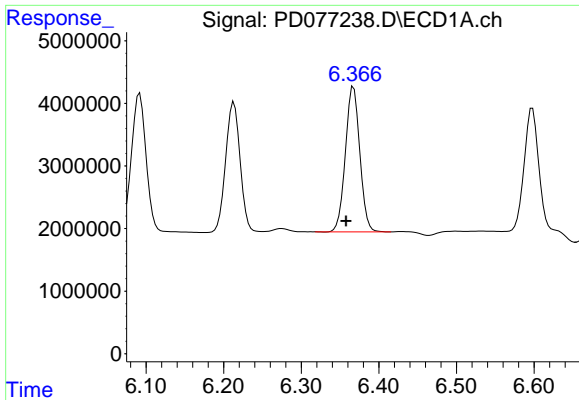
#12 4,4'-DDE

R.T.: 6.213 min
 Delta R.T.: 0.010 min
 Response: 26771510
 Conc: 9.02 ng/ml



#12 4,4'-DDE

R.T.: 5.219 min
 Delta R.T.: 0.000 min
 Response: 13018386
 Conc: 8.98 ng/ml m



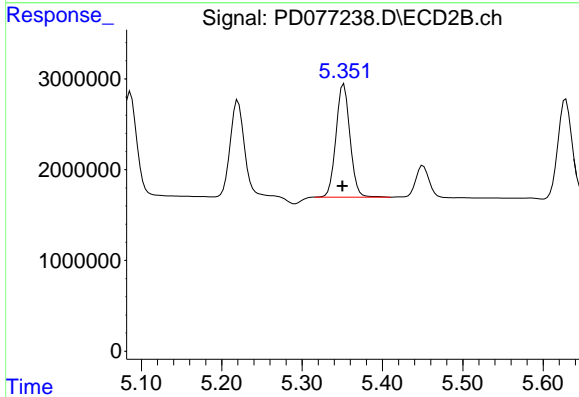
#13 Dieldrin

R.T.: 6.367 min
 Delta R.T.: 0.010 min
 Response: 29963570
 Conc: 9.15 ng/ml

Instrument :
 ECD_D
 ClientSampleId :
 PB154901BS

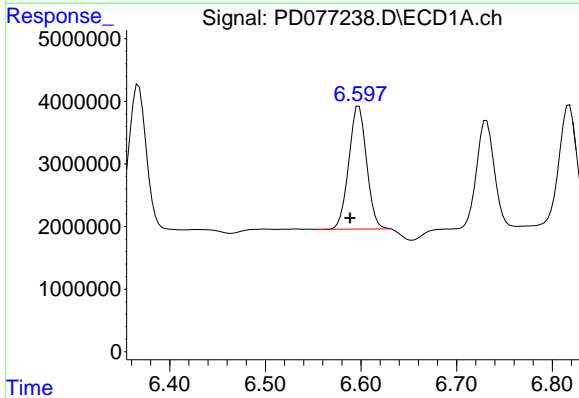
Manual Integrations
 APPROVED

Reviewed By :Abdul Mirza 08/18/2023
 Supervised By :Ankita Jodhani 08/18/2023



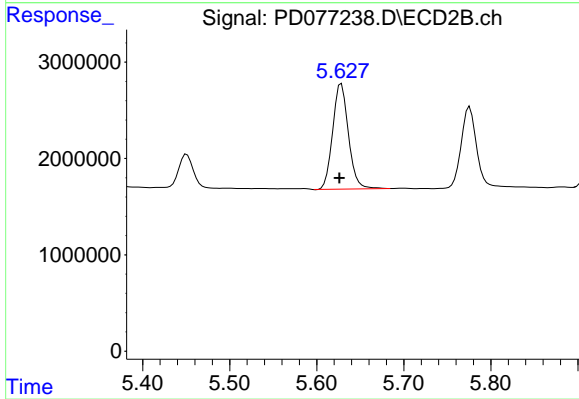
#13 Dieldrin

R.T.: 5.352 min
 Delta R.T.: 0.002 min
 Response: 15070774
 Conc: 8.95 ng/ml



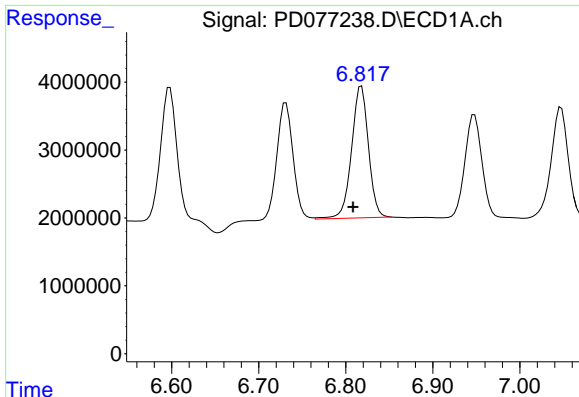
#14 Endrin

R.T.: 6.598 min
 Delta R.T.: 0.009 min
 Response: 25448624
 Conc: 9.16 ng/ml



#14 Endrin

R.T.: 5.628 min
 Delta R.T.: 0.002 min
 Response: 13818953
 Conc: 9.44 ng/ml



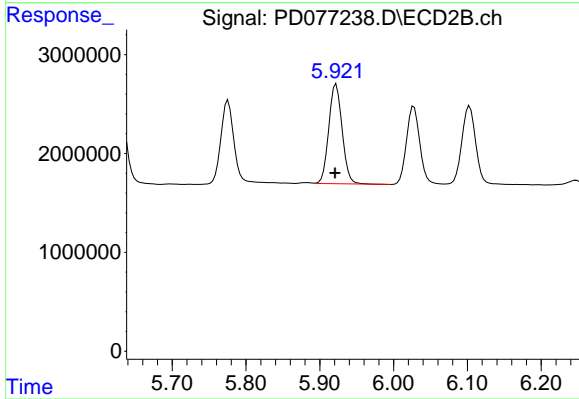
#15 Endosulfan II

R.T.: 6.818 min
 Delta R.T.: 0.009 min
 Response: 26141376
 Conc: 8.22 ng/ml

Instrument :
 ECD_D
 ClientSampleId :
 PB154901BS

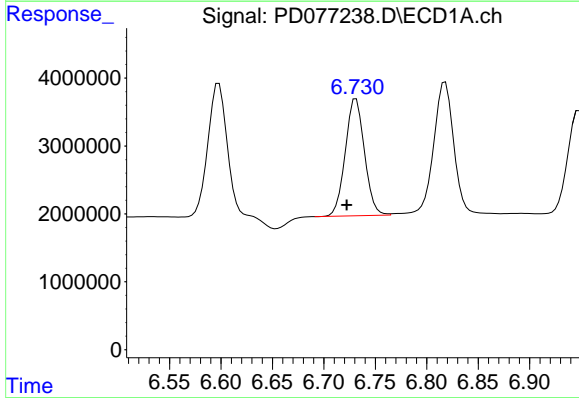
Manual Integrations
 APPROVED

Reviewed By :Abdul Mirza 08/18/2023
 Supervised By :Ankita Jodhani 08/18/2023



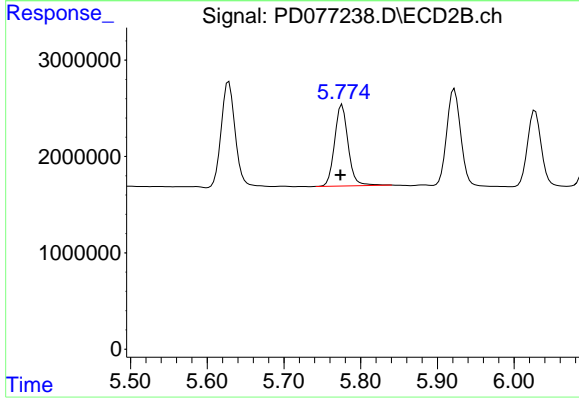
#15 Endosulfan II

R.T.: 5.922 min
 Delta R.T.: 0.002 min
 Response: 12686955
 Conc: 8.61 ng/ml



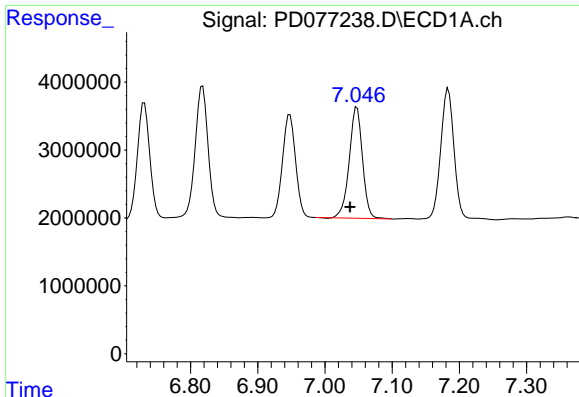
#16 4,4'-DDD

R.T.: 6.731 min
 Delta R.T.: 0.009 min
 Response: 22346681
 Conc: 9.50 ng/ml



#16 4,4'-DDD

R.T.: 5.776 min
 Delta R.T.: 0.002 min
 Response: 10370208
 Conc: 9.33 ng/ml



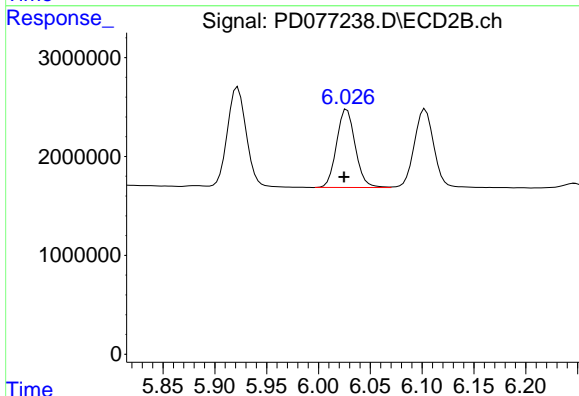
#17 4,4'-DDT

R.T.: 7.048 min
 Delta R.T.: 0.010 min
 Response: 22333937
 Conc: 9.18 ng/ml

Instrument :
 ECD_D
 ClientSampleId :
 PB154901BS

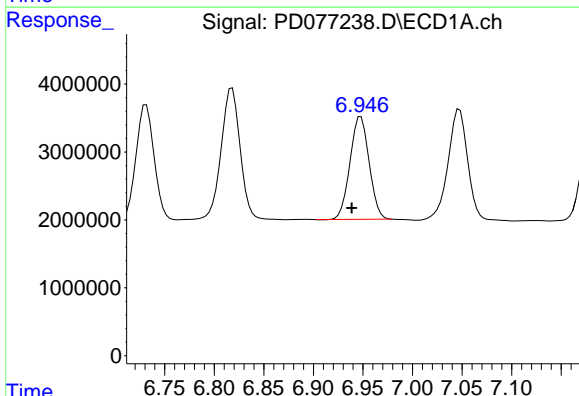
Manual Integrations
 APPROVED

Reviewed By :Abdul Mirza 08/18/2023
 Supervised By :Ankita Jodhani 08/18/2023



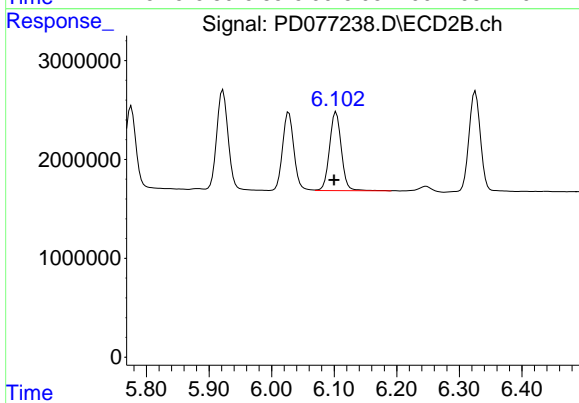
#17 4,4'-DDT

R.T.: 6.027 min
 Delta R.T.: 0.003 min
 Response: 9937897
 Conc: 8.94 ng/ml



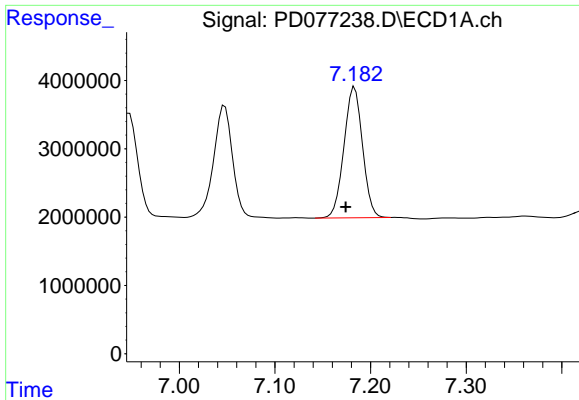
#18 Endrin aldehyde

R.T.: 6.948 min
 Delta R.T.: 0.009 min
 Response: 20318106
 Conc: 9.30 ng/ml



#18 Endrin aldehyde

R.T.: 6.103 min
 Delta R.T.: 0.003 min
 Response: 10461961
 Conc: 9.19 ng/ml

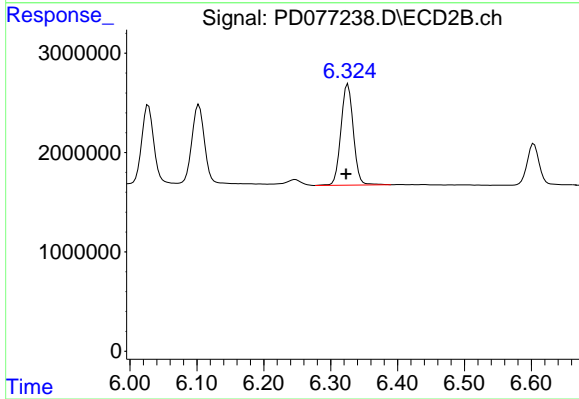


#19 Endosulfan Sulfate
 R.T.: 7.183 min
 Delta R.T.: 0.009 min
 Response: 25934853
 Conc: 9.95 ng/ml

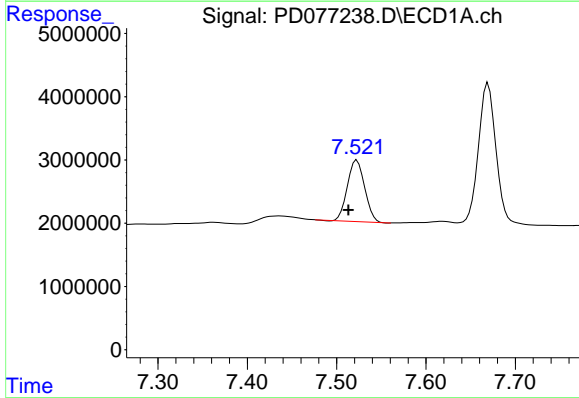
Instrument :
 ECD_D
 ClientSampleId :
 PB154901BS

Manual Integrations
 APPROVED

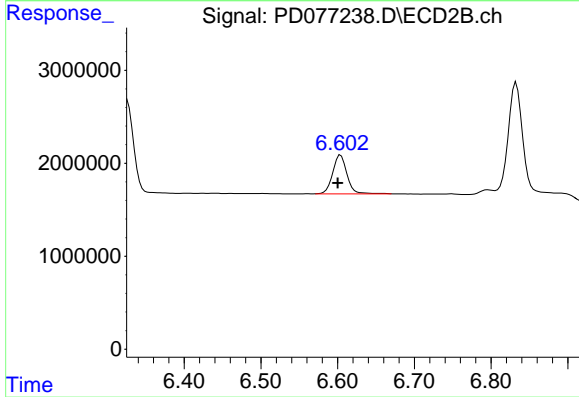
Reviewed By :Abdul Mirza 08/18/2023
 Supervised By :Ankita Jodhani 08/18/2023



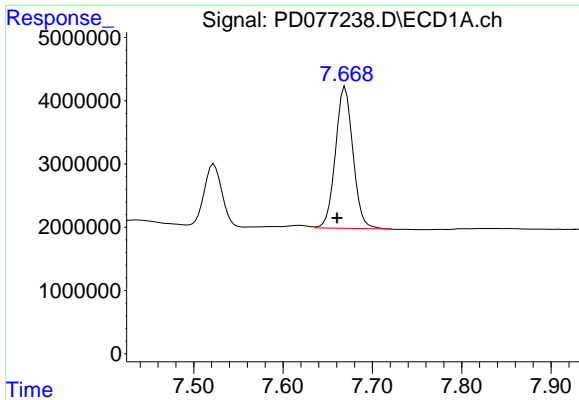
#19 Endosulfan Sulfate
 R.T.: 6.326 min
 Delta R.T.: 0.003 min
 Response: 13131721
 Conc: 9.85 ng/ml



#20 Methoxychlor
 R.T.: 7.523 min
 Delta R.T.: 0.009 min
 Response: 12974876
 Conc: 9.16 ng/ml



#20 Methoxychlor
 R.T.: 6.604 min
 Delta R.T.: 0.004 min
 Response: 5374675
 Conc: 8.99 ng/ml

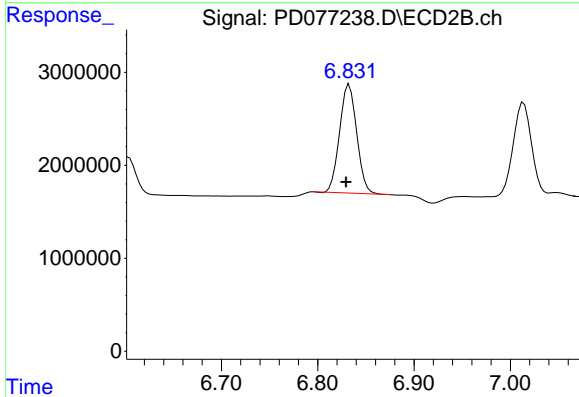


#21 Endrin ketone
 R.T.: 7.670 min
 Delta R.T.: 0.009 min
 Response: 30467466
 Conc: 10.12 ng/ml

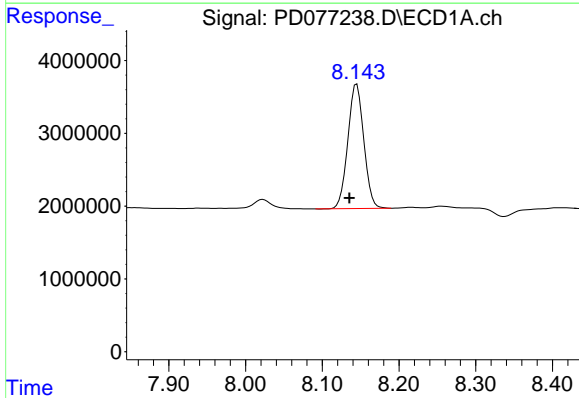
Instrument :
 ECD_D
 ClientSampleId :
 PB154901BS

Manual Integrations
 APPROVED

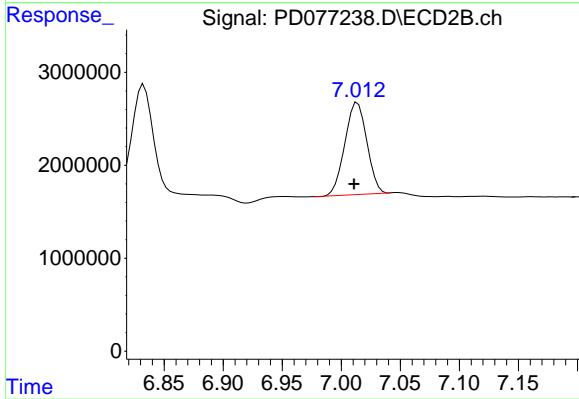
Reviewed By :Abdul Mirza 08/18/2023
 Supervised By :Ankita Jodhani 08/18/2023



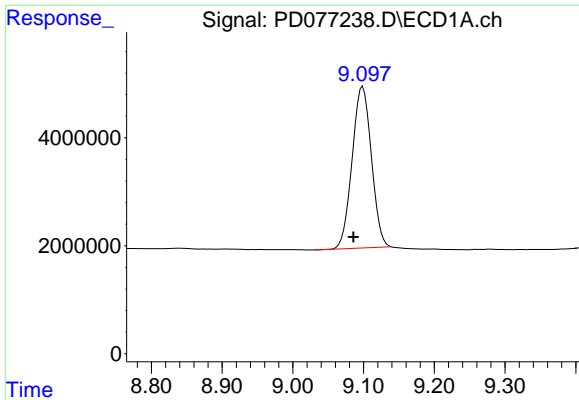
#21 Endrin ketone
 R.T.: 6.833 min
 Delta R.T.: 0.003 min
 Response: 14401284
 Conc: 9.08 ng/ml



#22 Mirex
 R.T.: 8.145 min
 Delta R.T.: 0.010 min
 Response: 24890656
 Conc: 10.91 ng/ml



#22 Mirex
 R.T.: 7.014 min
 Delta R.T.: 0.003 min
 Response: 12868583
 Conc: 9.94 ng/ml



#28 Decachlorobiphenyl

R.T.: 9.099 min
 Delta R.T.: 0.013 min
 Response: 56673997
 Conc: 20.68 ng/ml

Instrument :

ECD_D

ClientSampleId :

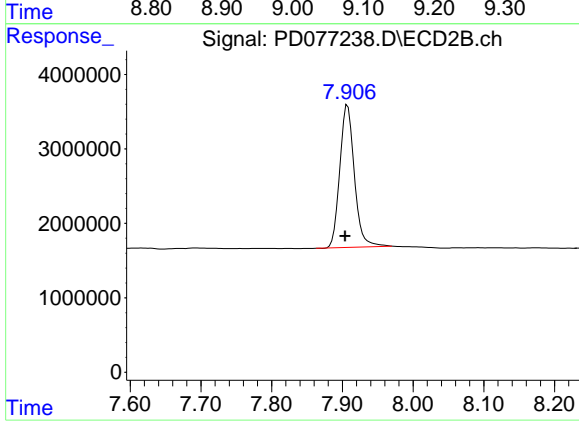
PB154901BS

Manual Integrations

APPROVED

Reviewed By :Abdul Mirza 08/18/2023

Supervised By :Ankita Jodhani 08/18/2023



#28 Decachlorobiphenyl

R.T.: 7.907 min
 Delta R.T.: 0.004 min
 Response: 27448587
 Conc: 19.18 ng/ml