

Data Path : Z:\pestpcbsrv\HPCHEM1\ECD_D\Data\PD082021\
 Data File : PD065067.D
 Signal(s) : Signal #1: ECD1A.ch Signal #2: ECD2B.ch
 Acq On : 19 Aug 2021 21:38
 Operator : AR\AJ
 Sample : PCHLORICC500
 Misc :
 ALS Vial : 12 Sample Multiplier: 1

Instrument :
 ECD_D
 ClientSampleId :
 PCHLORICC500

Integration File signal 1: autoint1.e
 Integration File signal 2: autoint2.e
 Quant Time: Aug 20 01:42:02 2021
 Quant Method : Z:\pestpcbsrv\HPCHEM1\ECD_D\Method\PD082021.M
 Quant Title : GC Extractables
 QLast Update : Fri Aug 20 01:41:14 2021
 Response via : Initial Calibration
 Integrator: ChemStation

Volume Inj. : 2 µl
 Signal #1 Phase : ZB-MR2 Signal #2 Phase: ZB-MR1
 Signal #1 Info : 30M x 0.32mm x0.2 Signal #2 Info : 30M x 0.32mm x 0.50µm

Compound	RT#1	RT#2	Resp#1	Resp#2	ng/ml	ng/ml

System Monitoring Compounds						
1) SA Tetrachlo...	3.496	4.013	60019688	394.9E6	50.000	50.000
28) SA Decachlor...	8.240	9.085	56433605	237.5E6	50.000	50.000
Target Compounds						
23) Chlordane-1	4.366	5.009	18180854	156.8E6	500.000	500.000
24) Chlordane-2	4.866	5.478	21097469	147.4E6	500.000	500.000
25) Chlordane-3	5.433	6.127	52672335	492.8E6	500.000	500.000
26) Chlordane-4	5.491	6.199	43961624	571.5E6	500.000	500.000
27) Chlordane-5	6.328	7.010	21538124	116.4E6	500.000	500.000

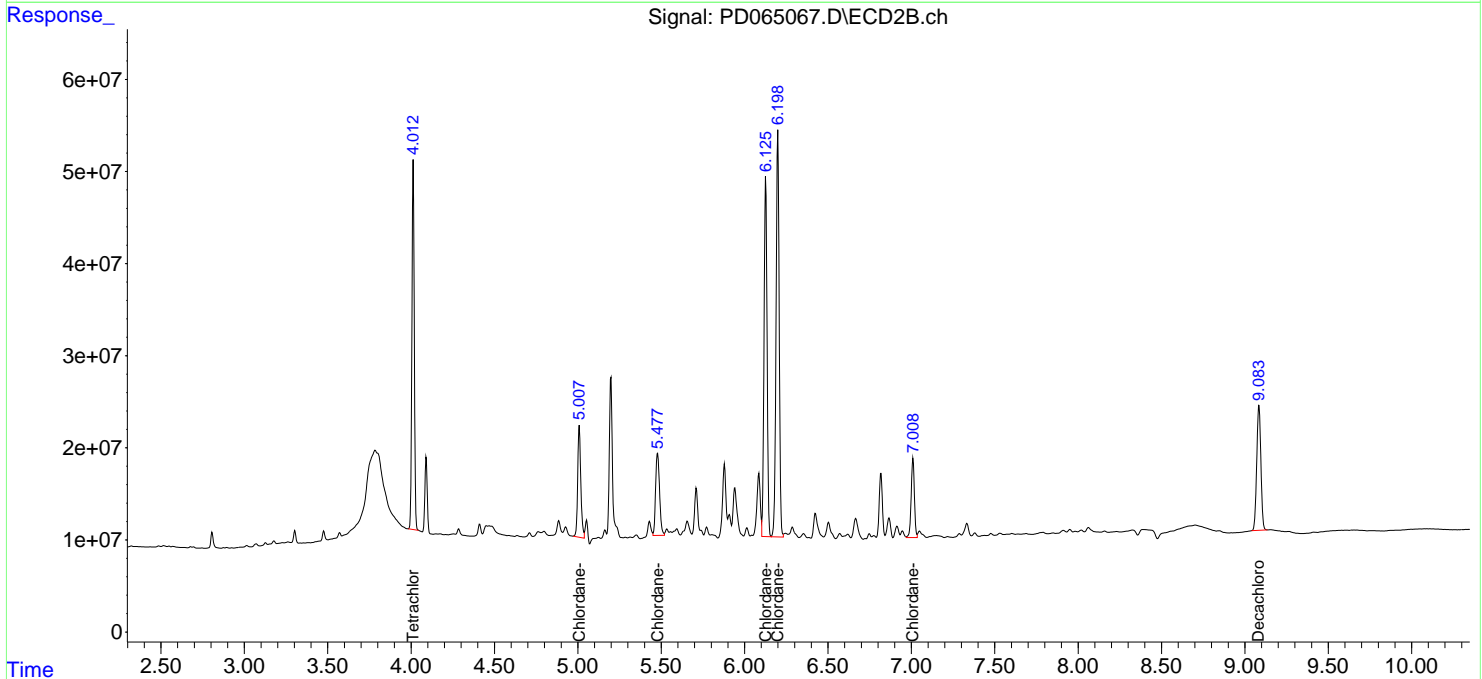
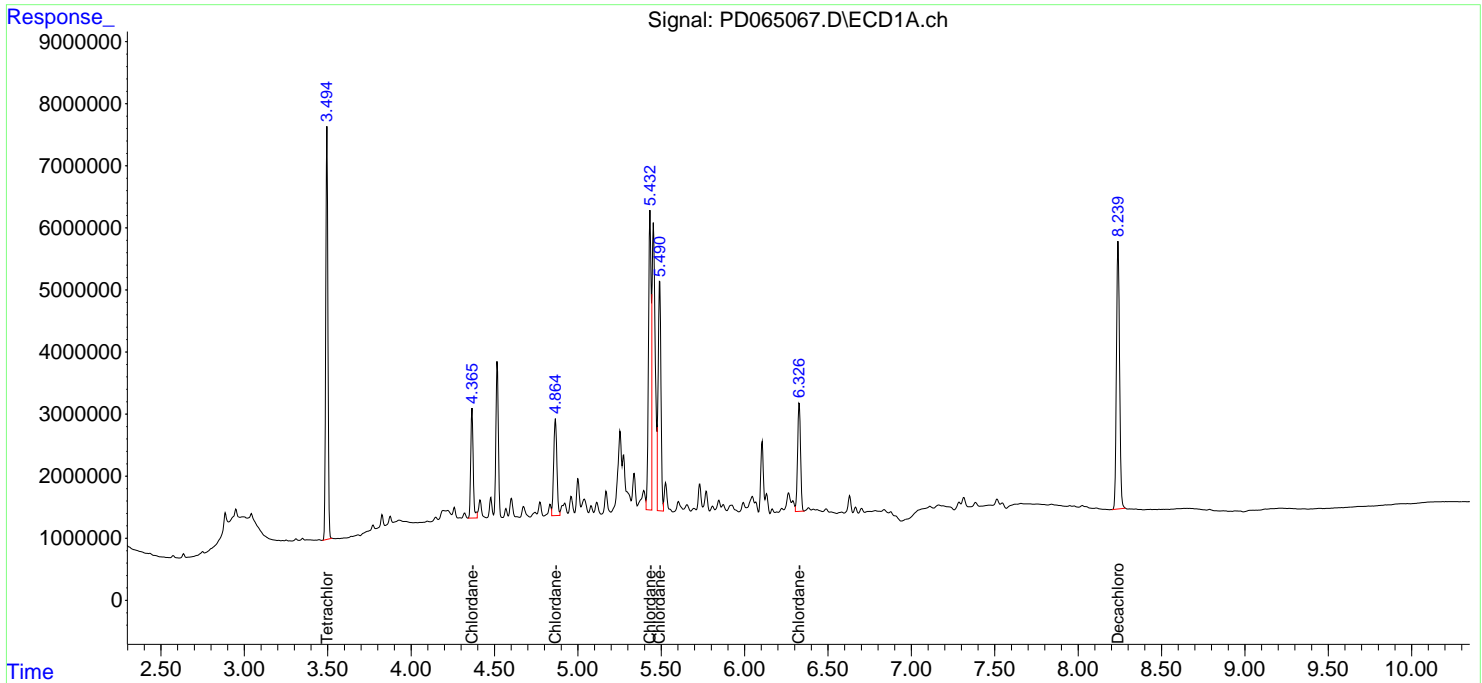
(f)=RT Delta > 1/2 Window (#)=Amounts differ by > 25% (m)=manual int.

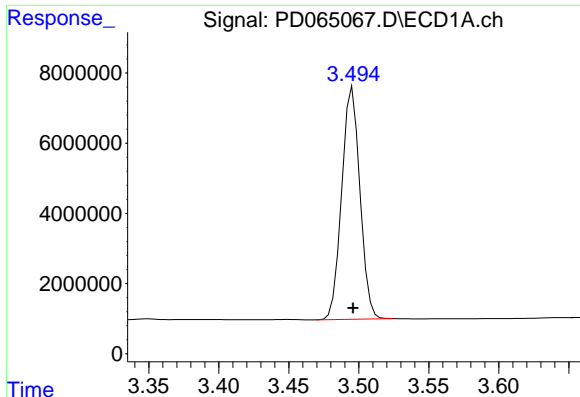
Data Path : Z:\pestpcbsrv\HPCHEM1\ECD_D\Data\PD082021\
 Data File : PD065067.D
 Signal(s) : Signal #1: ECD1A.ch Signal #2: ECD2B.ch
 Acq On : 19 Aug 2021 21:38
 Operator : AR\AJ
 Sample : PCHLORICC500
 Misc :
 ALS Vial : 12 Sample Multiplier: 1

Instrument :
 ECD_D
 ClientSampleID :
 PCHLORICC500

Integration File signal 1: autoint1.e
 Integration File signal 2: autoint2.e
 Quant Time: Aug 20 01:42:02 2021
 Quant Method : Z:\pestpcbsrv\HPCHEM1\ECD_D\Method\PD082021.M
 Quant Title : GC Extractables
 QLast Update : Fri Aug 20 01:41:14 2021
 Response via : Initial Calibration
 Integrator: ChemStation

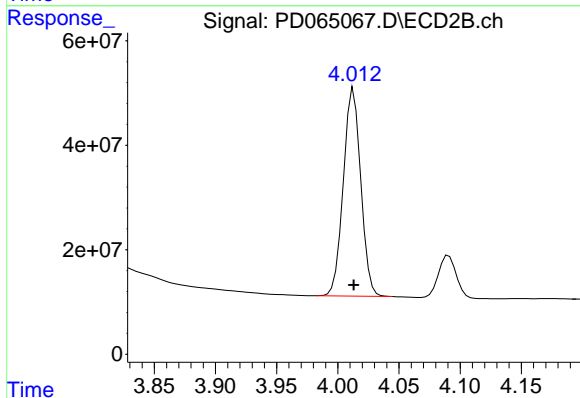
Volume Inj. : 2 µl
 Signal #1 Phase : ZB-MR2 Signal #2 Phase: ZB-MR1
 Signal #1 Info : 30M x 0.32mm x0.2 Signal #2 Info : 30M x 0.32mm x 0.50µm



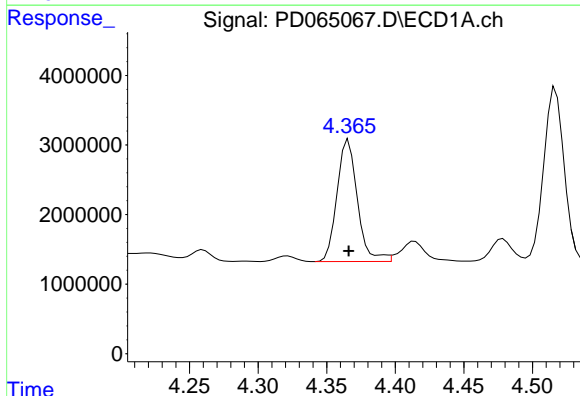


#1 Tetrachloro-m-xylene
 R.T.: 3.496 min
 Delta R.T.: 0.000 min
 Response: 60019688
 Conc: 50.00 ng/ml

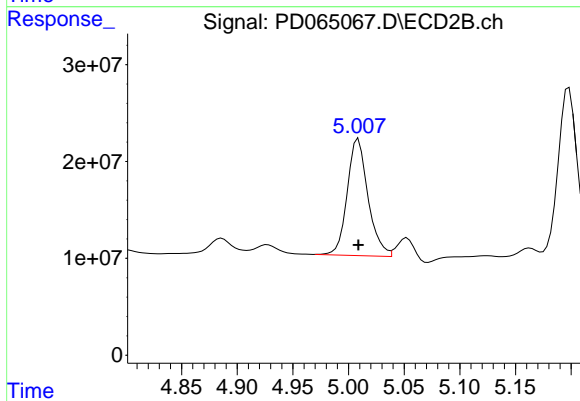
Instrument :
 ECD_D
 ClientSampleId :
 PCHLORICC500



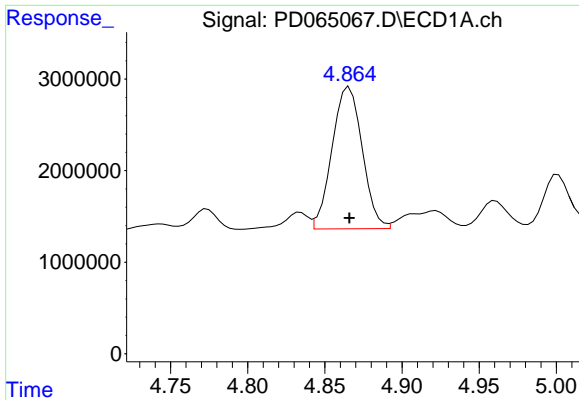
#1 Tetrachloro-m-xylene
 R.T.: 4.013 min
 Delta R.T.: 0.000 min
 Response: 394859284
 Conc: 50.00 ng/ml



#23 Chlordane-1
 R.T.: 4.366 min
 Delta R.T.: 0.000 min
 Response: 18180854
 Conc: 500.00 ng/ml

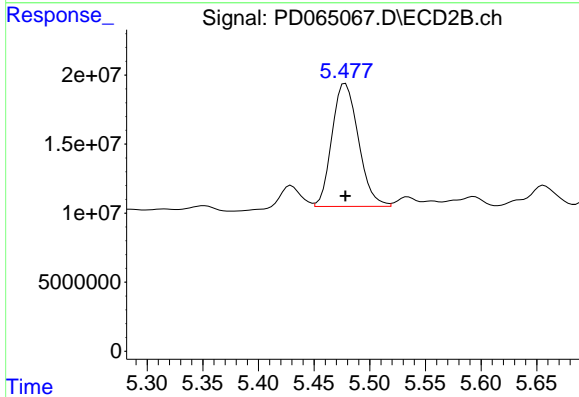


#23 Chlordane-1
 R.T.: 5.009 min
 Delta R.T.: 0.000 min
 Response: 156774816
 Conc: 500.00 ng/ml

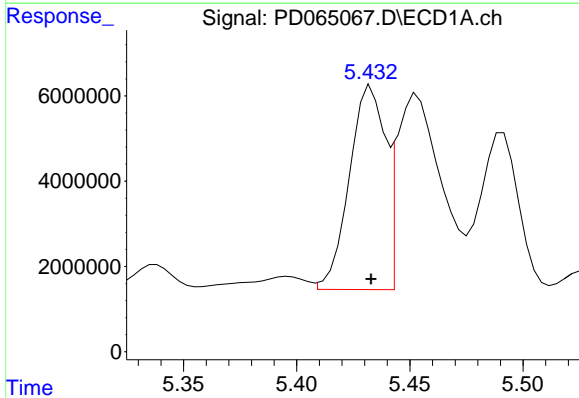


#24 Chlordane-2
 R.T.: 4.866 min
 Delta R.T.: 0.000 min
 Response: 21097469
 Conc: 500.00 ng/ml

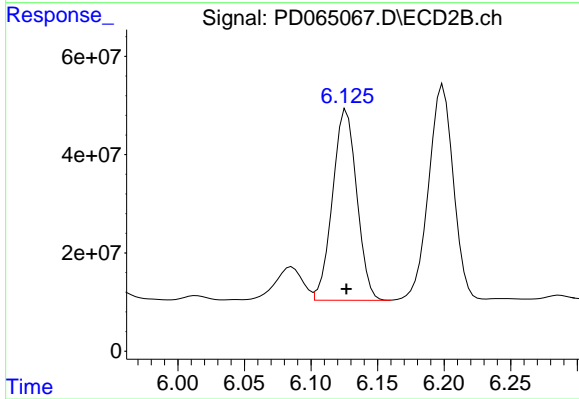
Instrument :
 ECD_D
ClientSampleId :
 PCHLORICC500



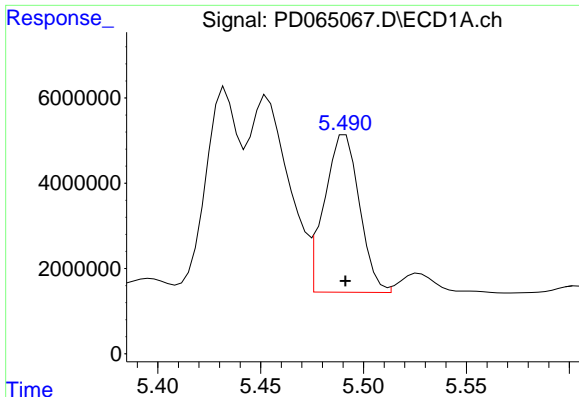
#24 Chlordane-2
 R.T.: 5.478 min
 Delta R.T.: 0.000 min
 Response: 147385147
 Conc: 500.00 ng/ml



#25 Chlordane-3
 R.T.: 5.433 min
 Delta R.T.: 0.000 min
 Response: 52672335
 Conc: 500.00 ng/ml



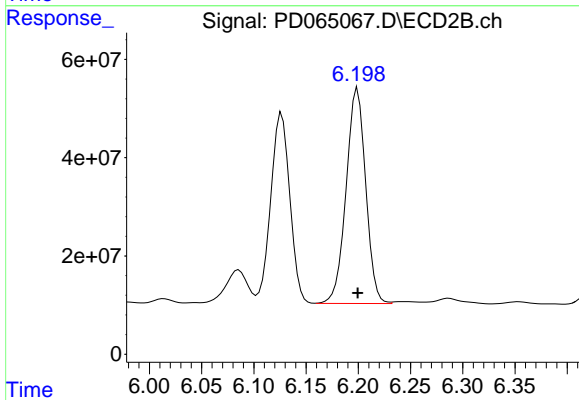
#25 Chlordane-3
 R.T.: 6.127 min
 Delta R.T.: 0.000 min
 Response: 492760867
 Conc: 500.00 ng/ml



#26 Chlordane-4

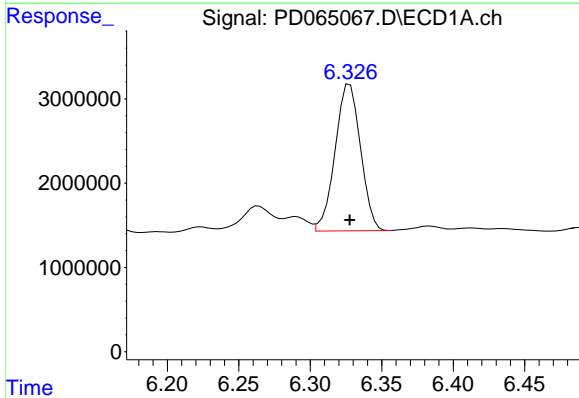
R.T.: 5.491 min
 Delta R.T.: 0.000 min
 Response: 43961624
 Conc: 500.00 ng/ml

Instrument :
 ECD_D
 ClientSampleId :
 PCHLORICC500



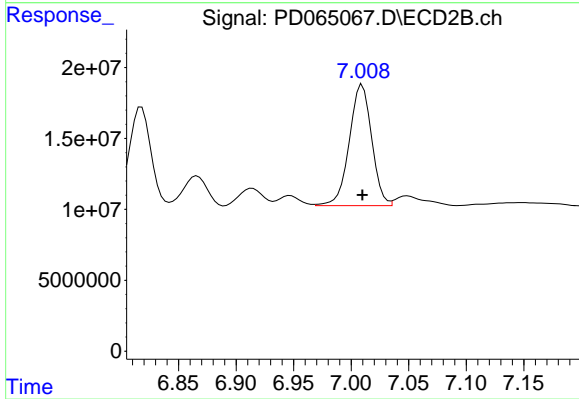
#26 Chlordane-4

R.T.: 6.199 min
 Delta R.T.: 0.000 min
 Response: 571452569
 Conc: 500.00 ng/ml



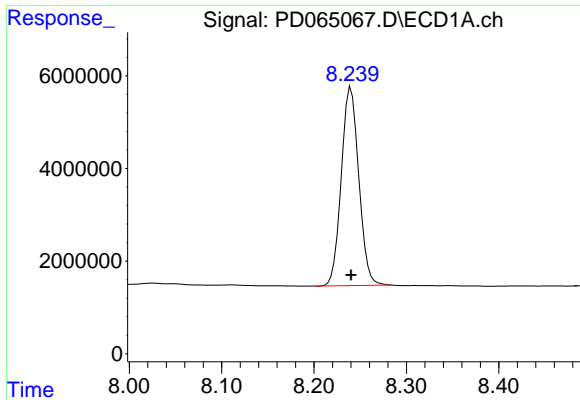
#27 Chlordane-5

R.T.: 6.328 min
 Delta R.T.: 0.000 min
 Response: 21538124
 Conc: 500.00 ng/ml



#27 Chlordane-5

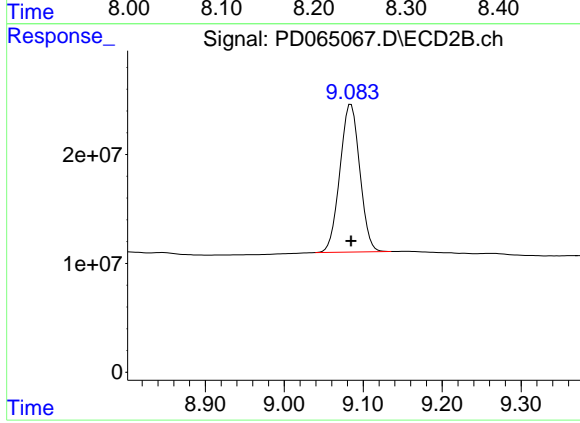
R.T.: 7.010 min
 Delta R.T.: 0.000 min
 Response: 116377493
 Conc: 500.00 ng/ml



#28 Decachlorobiphenyl

R.T.: 8.240 min
Delta R.T.: 0.000 min
Response: 56433605
Conc: 50.00 ng/ml

Instrument :
ECD_D
ClientSampleId :
PCHLORICC500



#28 Decachlorobiphenyl

R.T.: 9.085 min
Delta R.T.: 0.000 min
Response: 237503608
Conc: 50.00 ng/ml