

Data Path : Z:\pestpcbsrv\HPCHEM1\ECD_D\Data\PD082121\
 Data File : PD065098.D
 Signal(s) : Signal #1: ECD1A.ch Signal #2: ECD2B.ch
 Acq On : 20 Aug 2021 11:42
 Operator : AR\AJ
 Sample : PSTDCCC050
 Misc :
 ALS Vial : 4 Sample Multiplier: 1

Instrument :
 ECD_D
 ClientSampleId :

Integration File signal 1: autoint1.e
 Integration File signal 2: autoint2.e
 Quant Time: Aug 21 00:31:29 2021
 Quant Method : Z:\pestpcbsrv\HPCHEM1\ECD_D\Method\PD082021.M
 Quant Title : GC Extractables
 QLast Update : Fri Aug 20 02:25:41 2021
 Response via : Initial Calibration
 Integrator: ChemStation

Volume Inj. : 2 µl
 Signal #1 Phase : ZB-MR2 Signal #2 Phase: ZB-MR1
 Signal #1 Info : 30M x 0.32mm x0.2 Signal #2 Info : 30M x 0.32mm x 0.50µm

	Compound	RT#1	RT#2	Resp#1	Resp#2	ng/ml	ng/ml

System Monitoring Compounds							
1)	SA Tetrachlo...	3.496	4.013	49113946	373.7E6	47.781	47.186
28)	SA Decachlor...	8.240	9.083	59150988	235.2E6	52.205	49.690
Target Compounds							
2)	A alpha-BHC	3.935	4.407	69829025	547.0E6	48.791	47.084
3)	MA gamma-BHC...	4.219	4.694	65503009	500.4E6	47.744	47.236
4)	MA Heptachlor	4.517	5.198	62321226	472.5E6	47.848	47.128
5)	MB Aldrin	4.765	5.503	58914606	432.2E6	49.128	47.850
6)	B beta-BHC	4.466	4.870	31793770	226.4E6	49.188	50.346
7)	B delta-BHC	4.671	5.087	64882559	475.6E6	49.076	48.977
8)	Heptachlo...	5.207	5.892	55432974	379.1E6	48.780	50.821
9)	A Endosulfan I	5.545	6.250	52053191	344.3E6	48.798	48.885
10)	B gamma-Chl...	5.432	6.126	55372213	378.4E6	48.973	49.488
11)	B alpha-Chl...	5.491	6.198	54779366	362.6E6	48.925	48.707
12)	B 4,4'-DDE	5.653	6.356	52488262	349.0E6	49.802	48.600
13)	MA Dieldrin	5.788	6.509	55424326	352.1E6	49.386	48.519
14)	MA Endrin	6.046	6.728	51554549	287.2E6	49.128	46.668
15)	B Endosulfa...	6.318	6.941	50187464	287.8E6	50.194	49.081
16)	A 4,4'-DDD	6.168	6.851	47112288	292.7E6	49.813	49.776
17)	MA 4,4'-DDT	6.408	7.148	50114511	303.2E6	50.392	50.556
18)	B Endrin al...	6.487	7.066	40415144	232.1E6	48.840	49.757
19)	B Endosulfa...	6.699	7.288	52848871	285.6E6	49.768	49.801
20)	A Methoxychlor	6.954	7.607	30499809	153.3E6	51.745	50.675
21)	B Endrin ke...	7.192	7.761	64911889	324.2E6	50.916	49.889
22)	Mirex	7.378	8.210	50990123	223.4E6	50.004	50.182
23)	Chlordane-1	4.393f	0.000	2487254	0	65.675	N.D. #
24)	Chlordane-2	0.000	5.503f	0	432.2E6	N.D.	1381.703 #
25)	Chlordane-3	5.432	6.126	55372213	378.4E6	501.692	365.999 #
26)	Chlordane-4	5.491	6.198	54779366	362.6E6	596.701	301.586 #
27)	Chlordane-5	6.318	0.000	50187464	0	1115.555	N.D. #

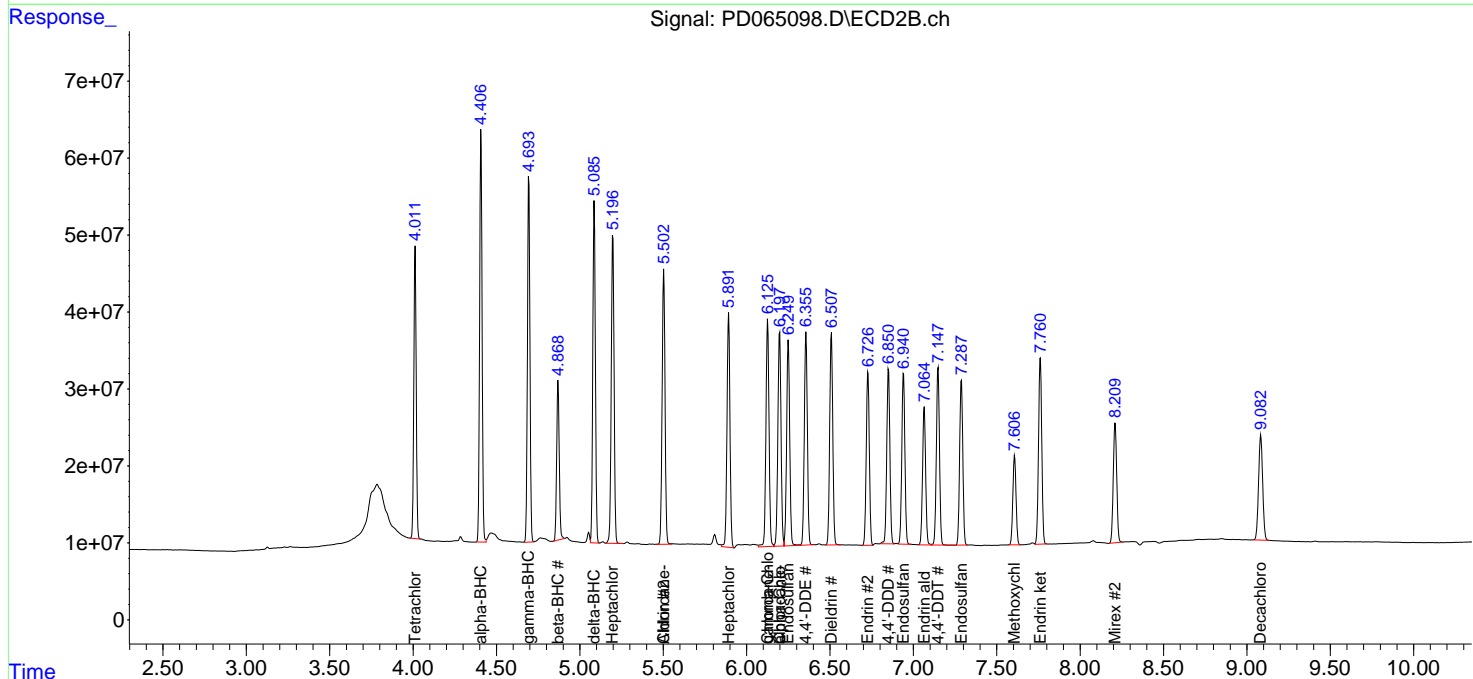
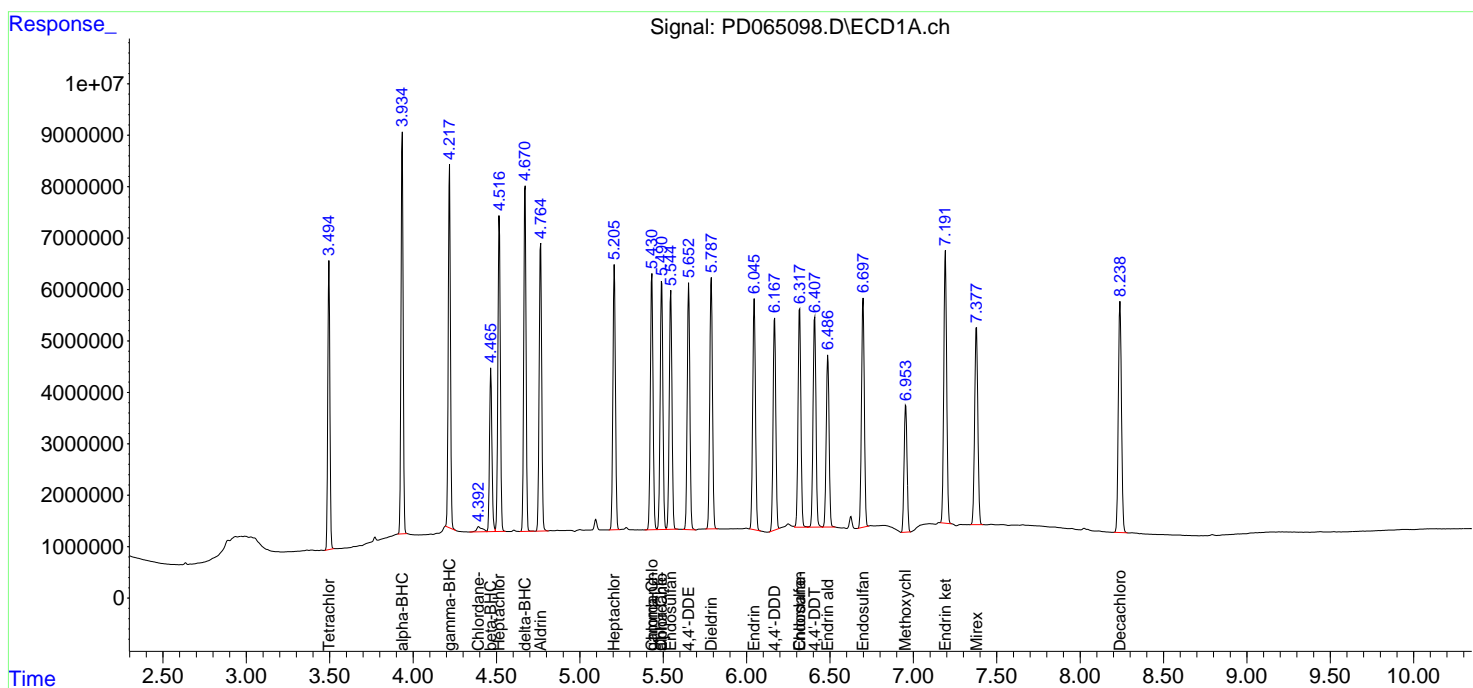
(f)=RT Delta > 1/2 Window (#)=Amounts differ by > 25% (m)=manual int.

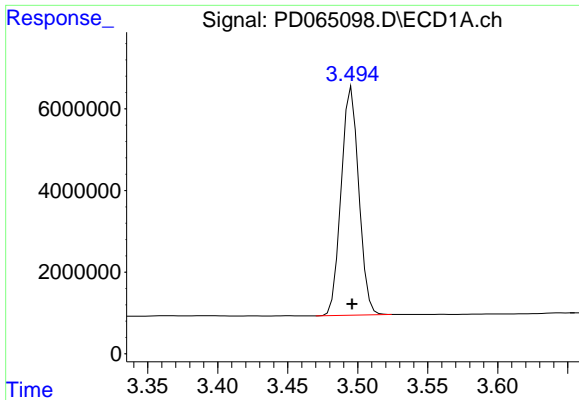
Data Path : Z:\pestpcbsrv\HPCHEM1\ECD_D\Data\PD082121\
 Data File : PD065098.D
 Signal(s) : Signal #1: ECD1A.ch Signal #2: ECD2B.ch
 Acq On : 20 Aug 2021 11:42
 Operator : AR\AJ
 Sample : PSTDCCC050
 Misc :
 ALS Vial : 4 Sample Multiplier: 1

Instrument :
 ECD_D
 ClientSampled :

Integration File signal 1: autoint1.e
 Integration File signal 2: autoint2.e
 Quant Time: Aug 21 00:31:29 2021
 Quant Method : Z:\pestpcbsrv\HPCHEM1\ECD_D\Method\PD082021.M
 Quant Title : GC Extractables
 QLast Update : Fri Aug 20 02:25:41 2021
 Response via : Initial Calibration
 Integrator: ChemStation

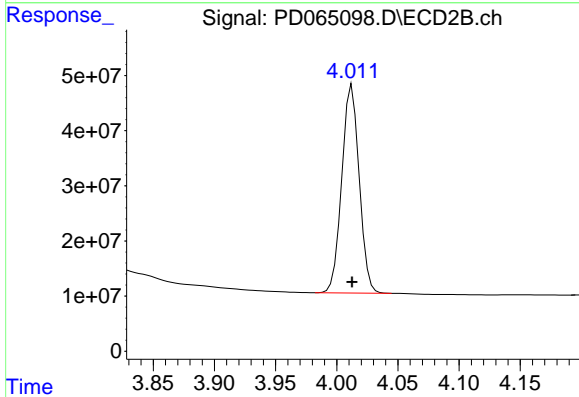
Volume Inj. : 2 µl
 Signal #1 Phase : ZB-MR2 Signal #2 Phase: ZB-MR1
 Signal #1 Info : 30M x 0.32mm x0.2 Signal #2 Info : 30M x 0.32mm x 0.50µm



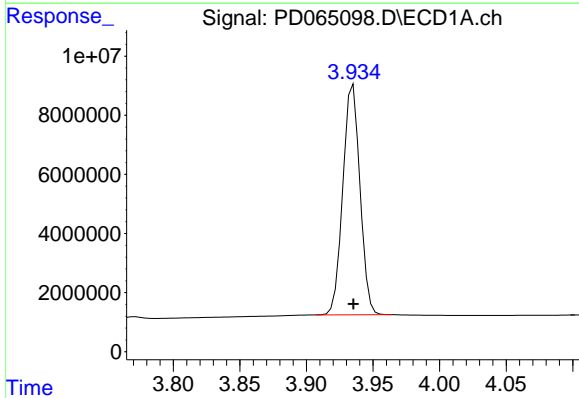


#1 Tetrachloro-m-xylene
 R.T.: 3.496 min
 Delta R.T.: 0.000 min
 Response: 49113946
 Conc: 47.78 ng/ml

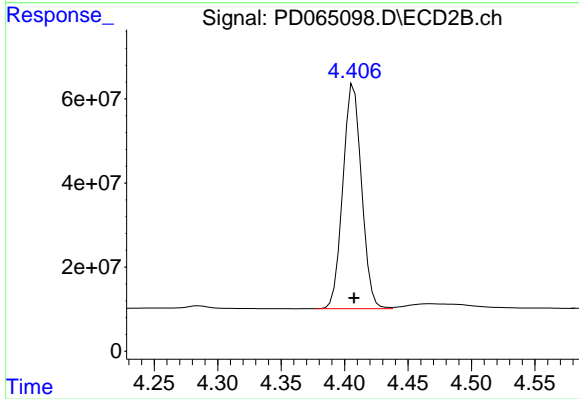
Instrument :
 ECD_D
 ClientSampled :



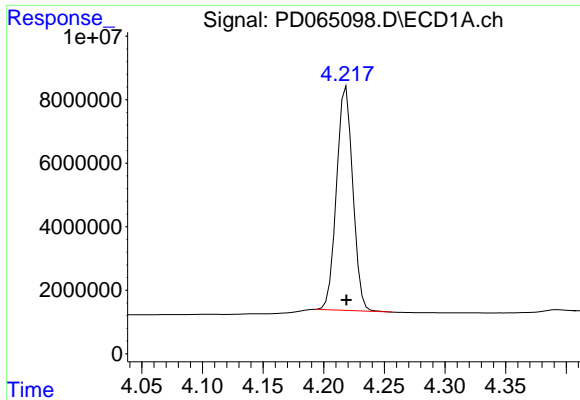
#1 Tetrachloro-m-xylene
 R.T.: 4.013 min
 Delta R.T.: 0.000 min
 Response: 373744028
 Conc: 47.19 ng/ml



#2 alpha-BHC
 R.T.: 3.935 min
 Delta R.T.: 0.000 min
 Response: 69829025
 Conc: 48.79 ng/ml

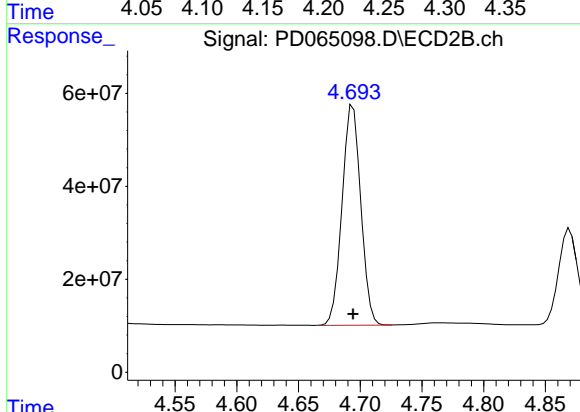


#2 alpha-BHC
 R.T.: 4.407 min
 Delta R.T.: 0.000 min
 Response: 546978963
 Conc: 47.08 ng/ml

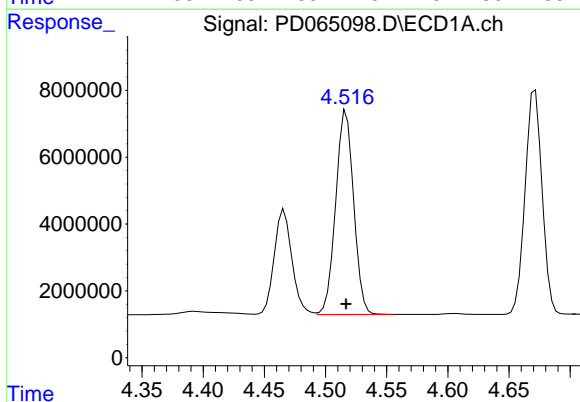


#3 gamma-BHC (Lindane)
 R.T.: 4.219 min
 Delta R.T.: 0.000 min
 Response: 65503009
 Conc: 47.74 ng/ml

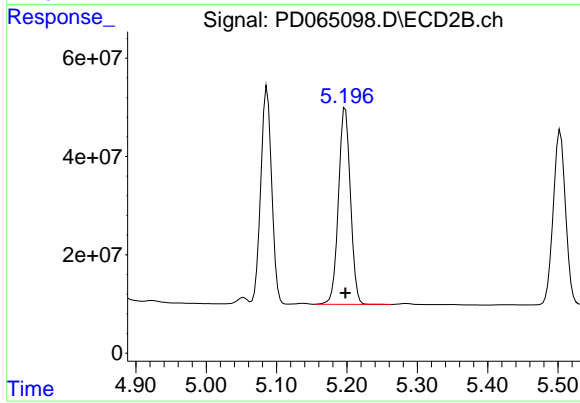
Instrument :
 ECD_D
 ClientSampled :



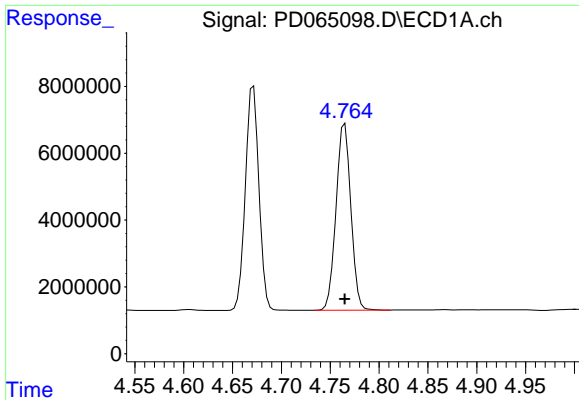
#3 gamma-BHC (Lindane)
 R.T.: 4.694 min
 Delta R.T.: 0.000 min
 Response: 500390690
 Conc: 47.24 ng/ml



#4 Heptachlor
 R.T.: 4.517 min
 Delta R.T.: 0.000 min
 Response: 62321226
 Conc: 47.85 ng/ml

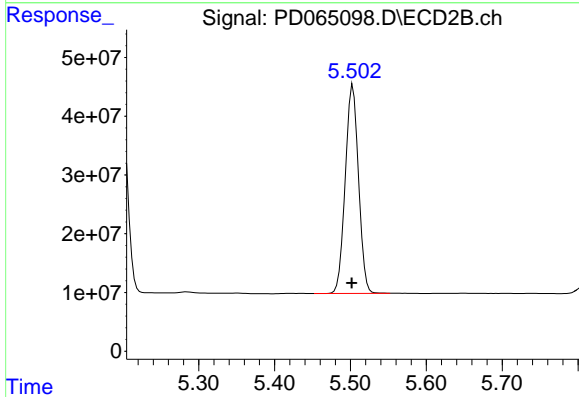


#4 Heptachlor
 R.T.: 5.198 min
 Delta R.T.: 0.000 min
 Response: 472507703
 Conc: 47.13 ng/ml

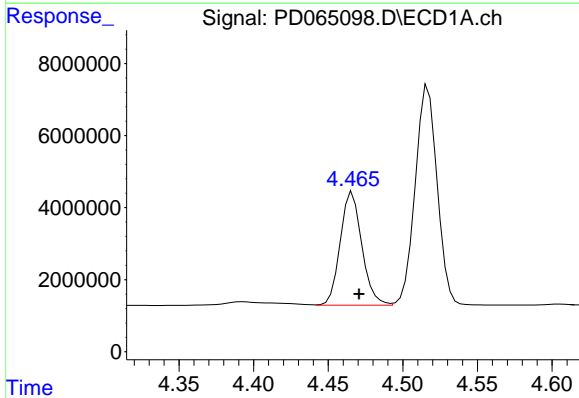


#5 Aldrin
 R.T.: 4.765 min
 Delta R.T.: 0.000 min
 Response: 58914606
 Conc: 49.13 ng/ml

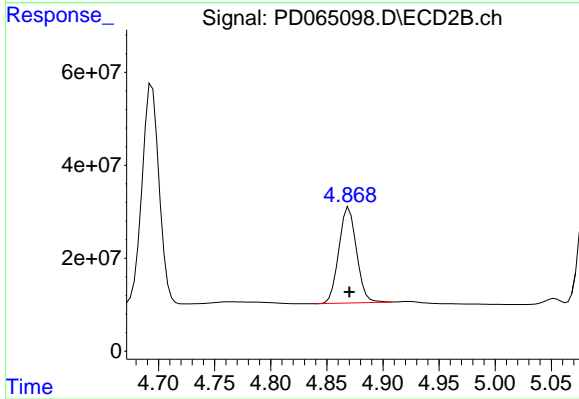
Instrument :
 ECD_D
 ClientSampled :



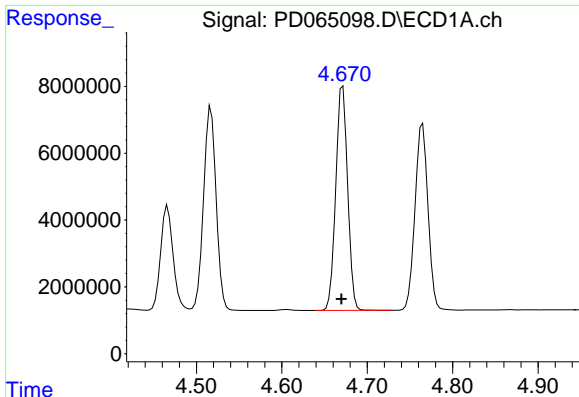
#5 Aldrin
 R.T.: 5.503 min
 Delta R.T.: 0.001 min
 Response: 432230369
 Conc: 47.85 ng/ml



#6 beta-BHC
 R.T.: 4.466 min
 Delta R.T.: -0.004 min
 Response: 31793770
 Conc: 49.19 ng/ml



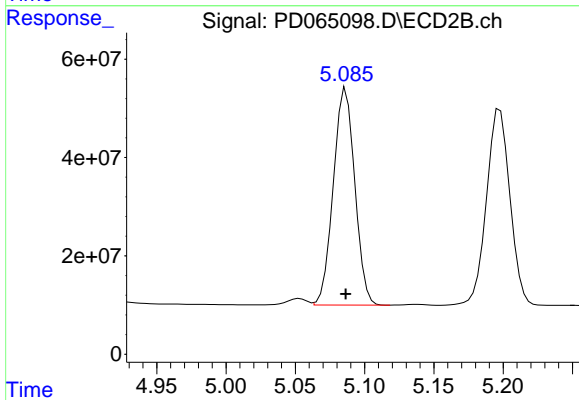
#6 beta-BHC
 R.T.: 4.870 min
 Delta R.T.: 0.000 min
 Response: 226427334
 Conc: 50.35 ng/ml



#7 delta-BHC

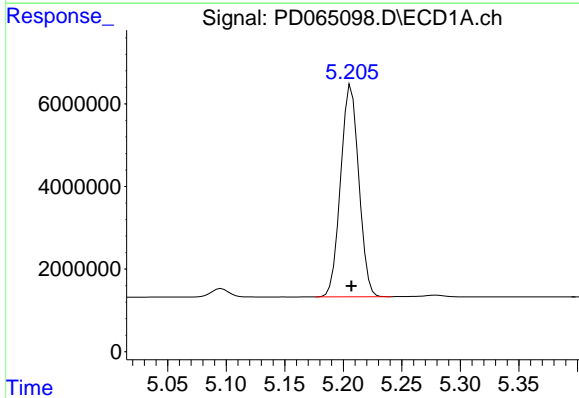
R.T.: 4.671 min
 Delta R.T.: 0.002 min
 Response: 64882559
 Conc: 49.08 ng/ml

Instrument :
 ECD_D
 ClientSampled :



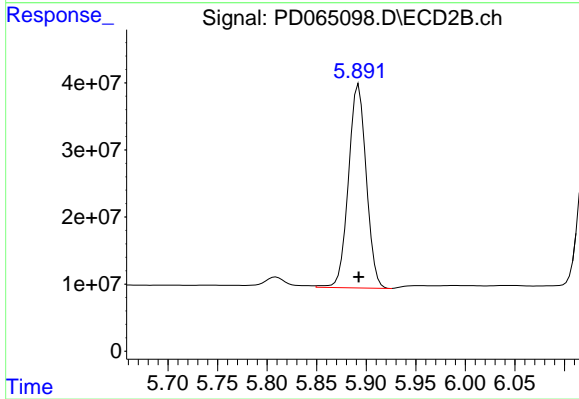
#7 delta-BHC

R.T.: 5.087 min
 Delta R.T.: 0.000 min
 Response: 475641138
 Conc: 48.98 ng/ml



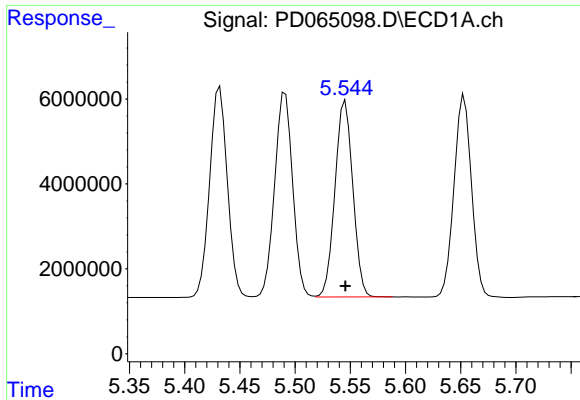
#8 Heptachlor epoxide

R.T.: 5.207 min
 Delta R.T.: 0.000 min
 Response: 55432974
 Conc: 48.78 ng/ml



#8 Heptachlor epoxide

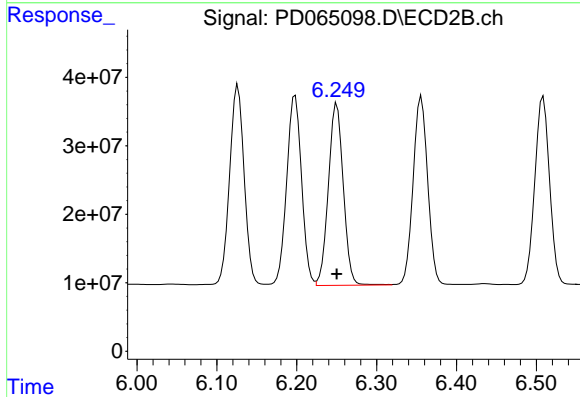
R.T.: 5.892 min
 Delta R.T.: 0.000 min
 Response: 379145113
 Conc: 50.82 ng/ml



#9 Endosulfan I

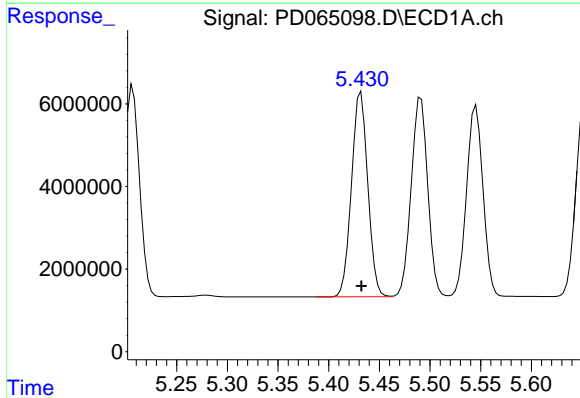
R.T.: 5.545 min
 Delta R.T.: 0.000 min
 Response: 52053191
 Conc: 48.80 ng/ml

Instrument :
 ECD_D
 ClientSampleId :



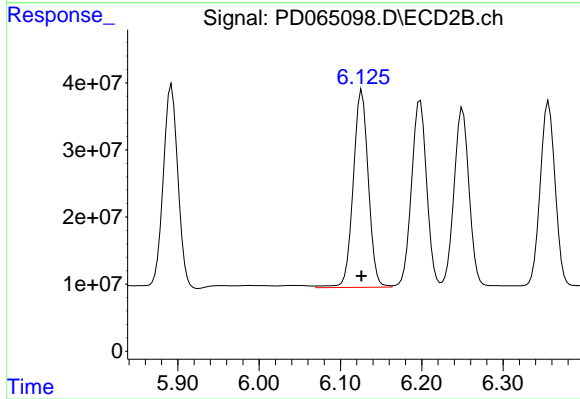
#9 Endosulfan I

R.T.: 6.250 min
 Delta R.T.: 0.000 min
 Response: 344279283
 Conc: 48.89 ng/ml



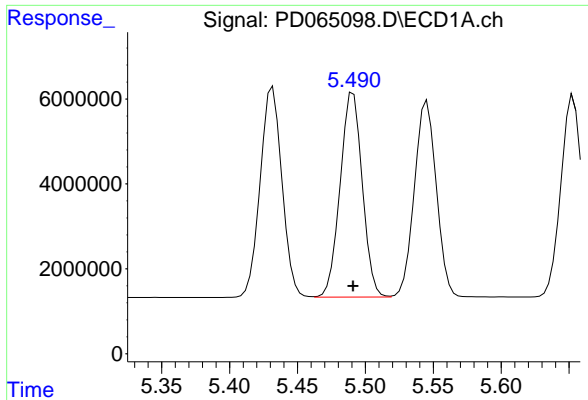
#10 gamma-Chlordane

R.T.: 5.432 min
 Delta R.T.: 0.000 min
 Response: 55372213
 Conc: 48.97 ng/ml



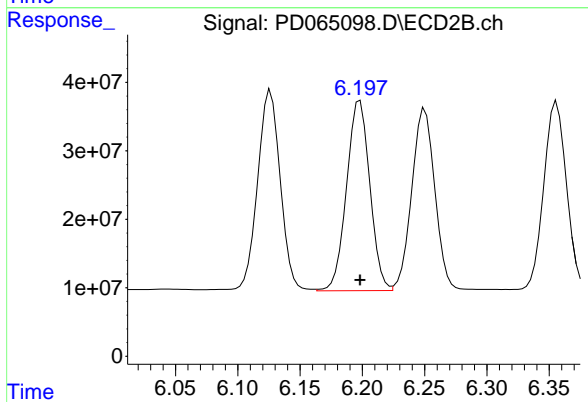
#10 gamma-Chlordane

R.T.: 6.126 min
 Delta R.T.: 0.000 min
 Response: 378389652
 Conc: 49.49 ng/ml

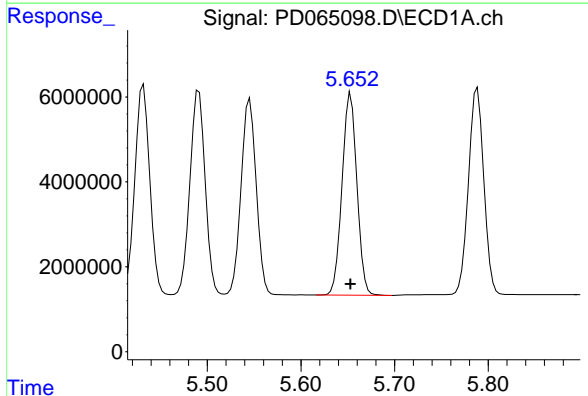


#11 alpha-Chlordane
R.T.: 5.491 min
Delta R.T.: 0.000 min
Response: 54779366
Conc: 48.93 ng/ml

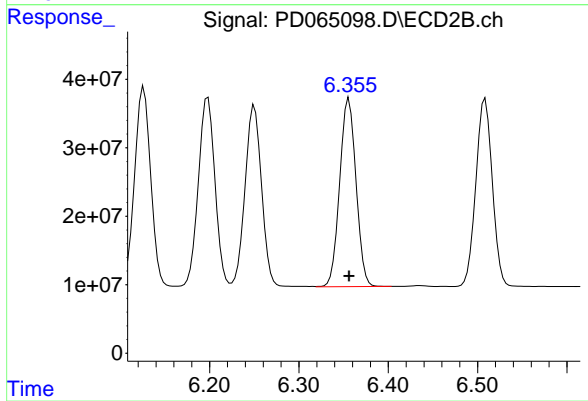
Instrument :
ECD_D
ClientSampleId :



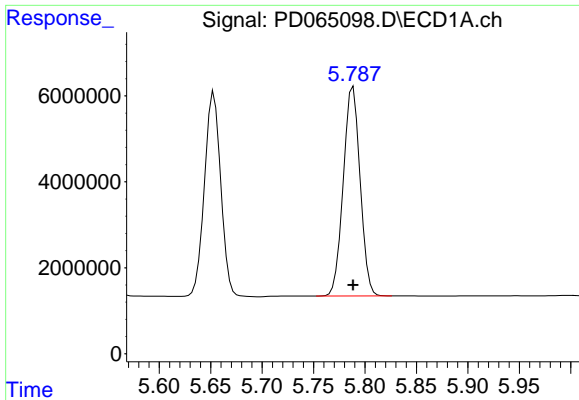
#11 alpha-Chlordane
R.T.: 6.198 min
Delta R.T.: 0.000 min
Response: 362602472
Conc: 48.71 ng/ml



#12 4,4'-DDE
R.T.: 5.653 min
Delta R.T.: 0.000 min
Response: 52488262
Conc: 49.80 ng/ml

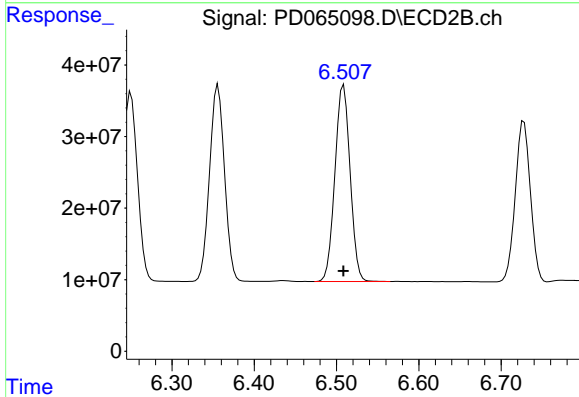


#12 4,4'-DDE
R.T.: 6.356 min
Delta R.T.: 0.000 min
Response: 348983621
Conc: 48.60 ng/ml

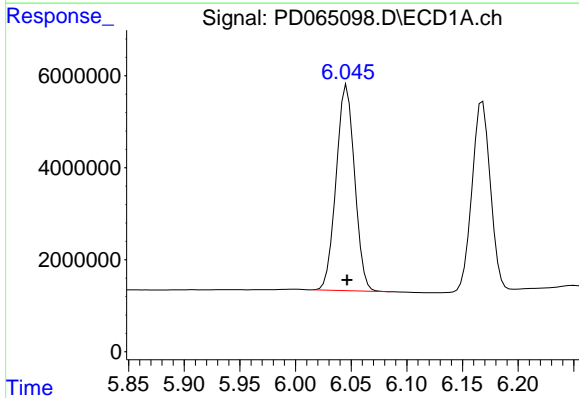


#13 Dieldrin
 R.T.: 5.788 min
 Delta R.T.: 0.000 min
 Response: 55424326
 Conc: 49.39 ng/ml

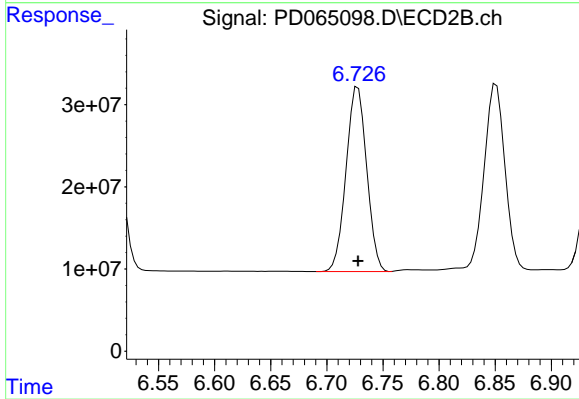
Instrument :
 ECD_D
 ClientSampleId :



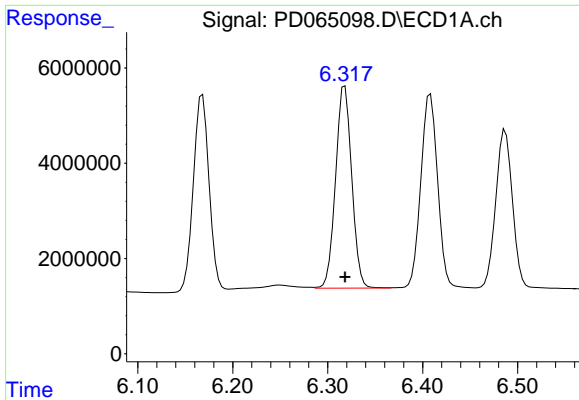
#13 Dieldrin
 R.T.: 6.509 min
 Delta R.T.: 0.000 min
 Response: 352063459
 Conc: 48.52 ng/ml



#14 Endrin
 R.T.: 6.046 min
 Delta R.T.: 0.000 min
 Response: 51554549
 Conc: 49.13 ng/ml

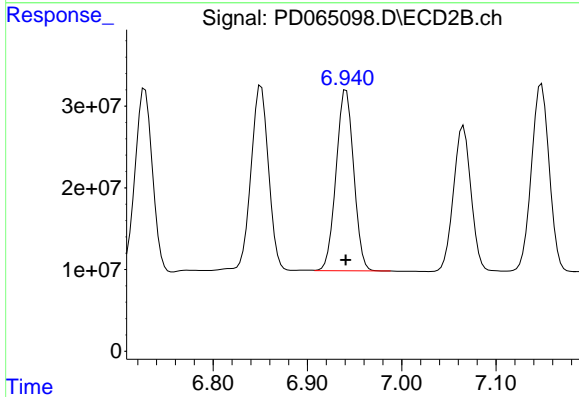


#14 Endrin
 R.T.: 6.728 min
 Delta R.T.: 0.000 min
 Response: 287233445
 Conc: 46.67 ng/ml

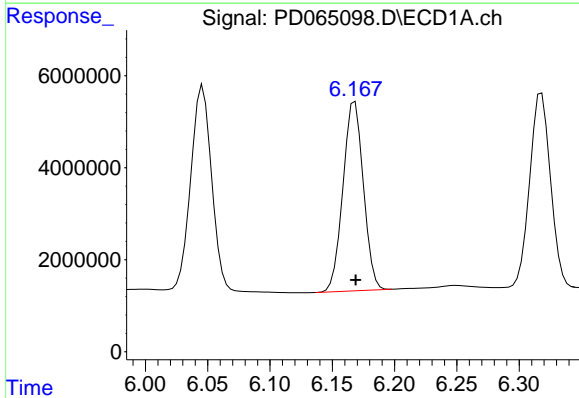


#15 Endosulfan II
 R.T.: 6.318 min
 Delta R.T.: 0.000 min
 Response: 50187464
 Conc: 50.19 ng/ml

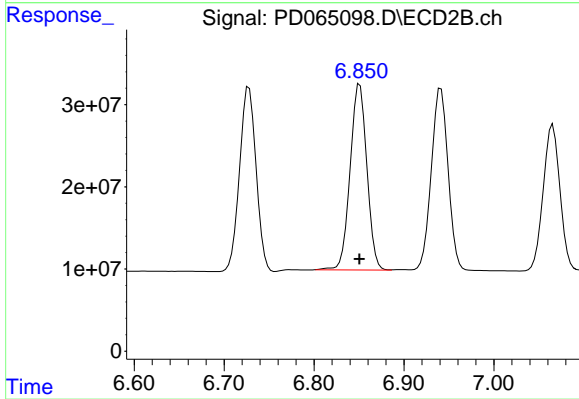
Instrument :
 ECD_D
 ClientSampled :



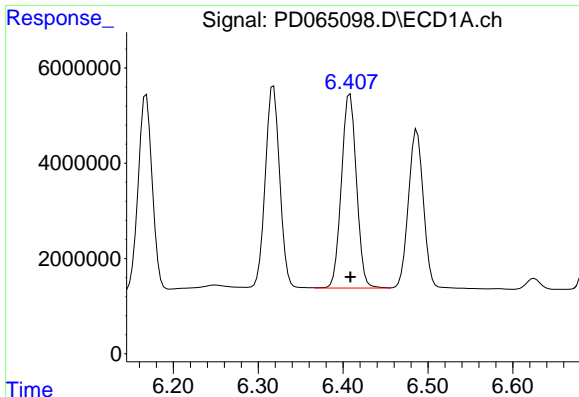
#15 Endosulfan II
 R.T.: 6.941 min
 Delta R.T.: 0.000 min
 Response: 287807914
 Conc: 49.08 ng/ml



#16 4,4'-DDD
 R.T.: 6.168 min
 Delta R.T.: 0.000 min
 Response: 47112288
 Conc: 49.81 ng/ml



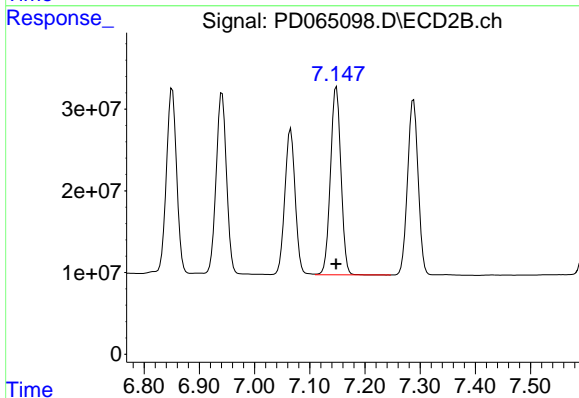
#16 4,4'-DDD
 R.T.: 6.851 min
 Delta R.T.: 0.000 min
 Response: 292704516
 Conc: 49.78 ng/ml



#17 4,4'-DDT

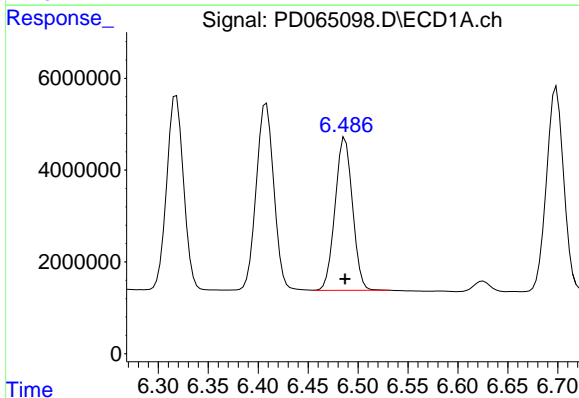
R.T.: 6.408 min
 Delta R.T.: 0.000 min
 Response: 50114511
 Conc: 50.39 ng/ml

Instrument :
 ECD_D
 ClientSampled :



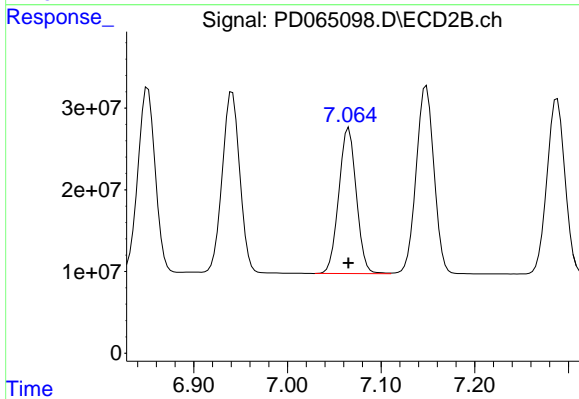
#17 4,4'-DDT

R.T.: 7.148 min
 Delta R.T.: 0.000 min
 Response: 303178785
 Conc: 50.56 ng/ml



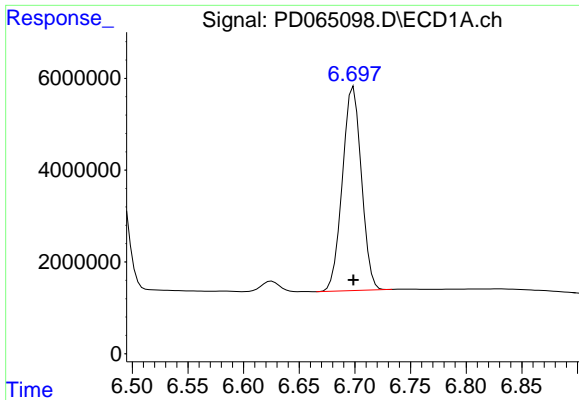
#18 Endrin aldehyde

R.T.: 6.487 min
 Delta R.T.: 0.000 min
 Response: 40415144
 Conc: 48.84 ng/ml



#18 Endrin aldehyde

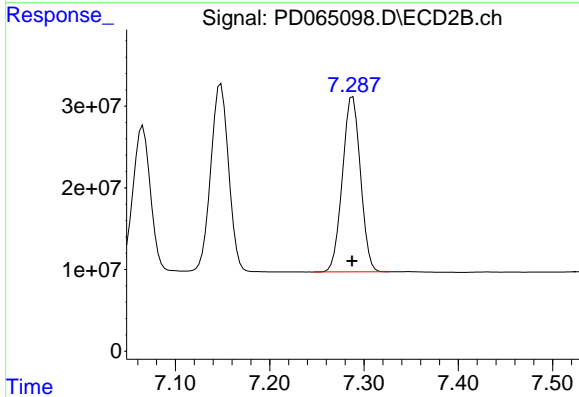
R.T.: 7.066 min
 Delta R.T.: 0.000 min
 Response: 232084711
 Conc: 49.76 ng/ml



#19 Endosulfan Sulfate

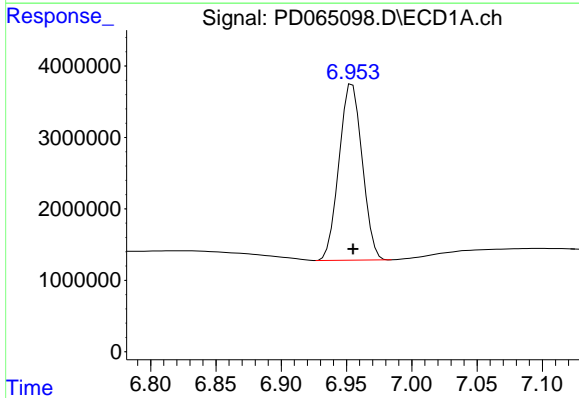
R.T.: 6.699 min
 Delta R.T.: 0.000 min
 Response: 52848871
 Conc: 49.77 ng/ml

Instrument :
 ECD_D
 ClientSampled :



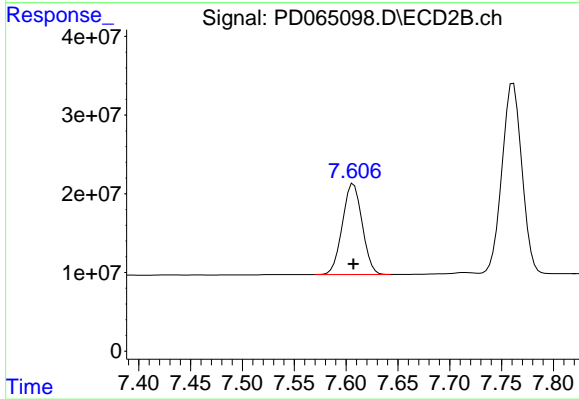
#19 Endosulfan Sulfate

R.T.: 7.288 min
 Delta R.T.: 0.000 min
 Response: 285589469
 Conc: 49.80 ng/ml



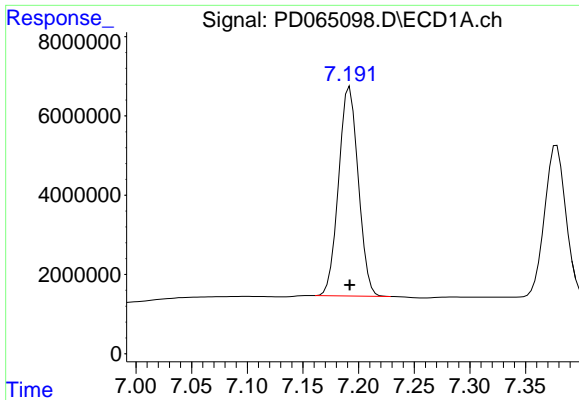
#20 Methoxychlor

R.T.: 6.954 min
 Delta R.T.: 0.000 min
 Response: 30499809
 Conc: 51.75 ng/ml



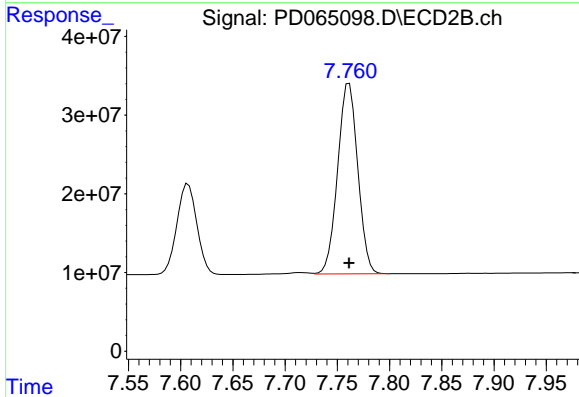
#20 Methoxychlor

R.T.: 7.607 min
 Delta R.T.: 0.000 min
 Response: 153347950
 Conc: 50.67 ng/ml

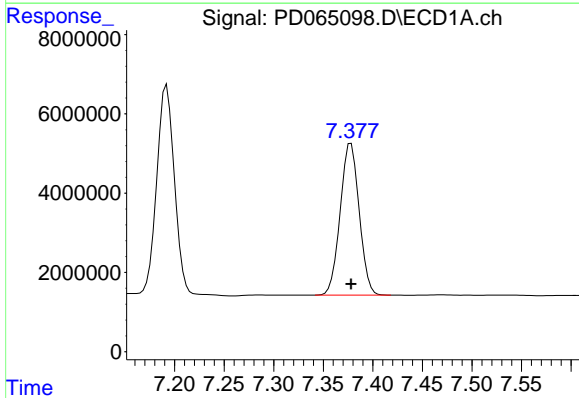


#21 Endrin ketone
R.T.: 7.192 min
Delta R.T.: 0.000 min
Response: 64911889
Conc: 50.92 ng/ml

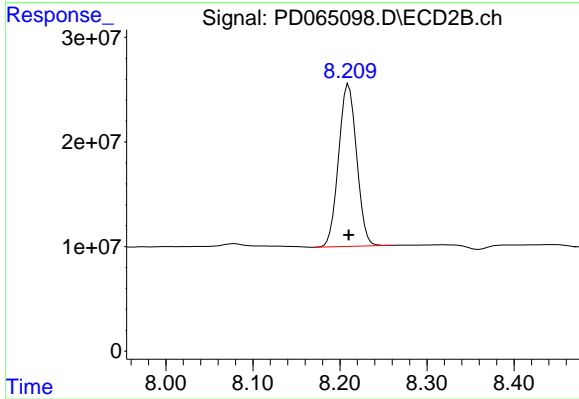
Instrument :
ECD_D
ClientSampleId :



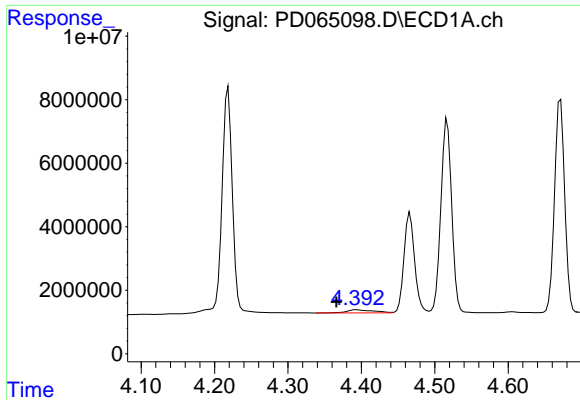
#21 Endrin ketone
R.T.: 7.761 min
Delta R.T.: 0.000 min
Response: 324217027
Conc: 49.89 ng/ml



#22 Mirex
R.T.: 7.378 min
Delta R.T.: 0.000 min
Response: 50990123
Conc: 50.00 ng/ml

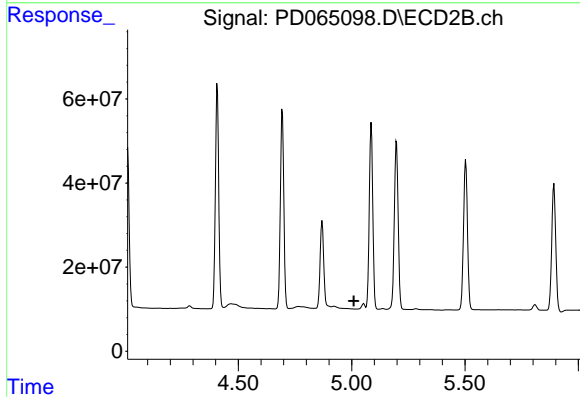


#22 Mirex
R.T.: 8.210 min
Delta R.T.: 0.000 min
Response: 223426316
Conc: 50.18 ng/ml

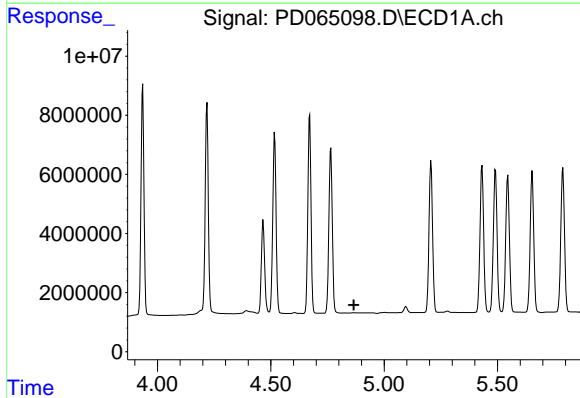


#23 Chlordane-1
 R.T.: 4.393 min
 Delta R.T.: 0.027 min
 Response: 2487254
 Conc: 65.68 ng/ml

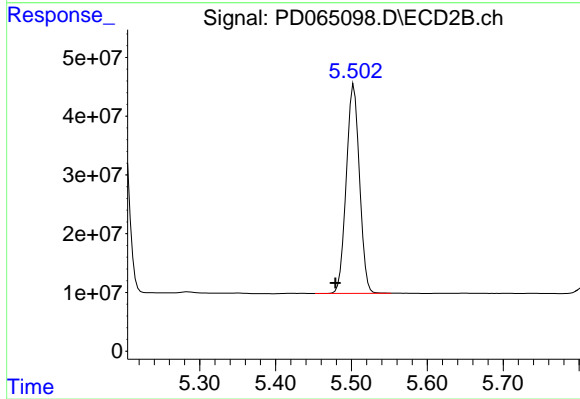
Instrument :
 ECD_D
 ClientSampled :



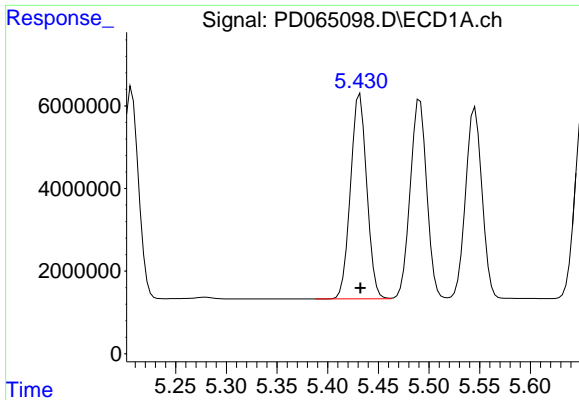
#23 Chlordane-1
 R.T.: 0.000 min
 Exp R.T. : 5.009 min
 Response: 0
 Conc: N.D.



#24 Chlordane-2
 R.T.: 0.000 min
 Exp R.T. : 4.866 min
 Response: 0
 Conc: N.D.

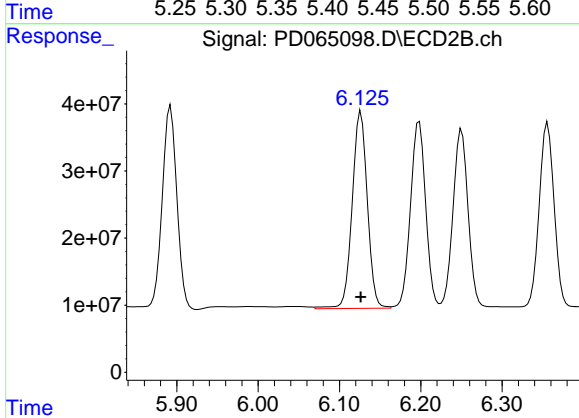


#24 Chlordane-2
 R.T.: 5.503 min
 Delta R.T.: 0.024 min
 Response: 432230369
 Conc: 1381.70 ng/ml

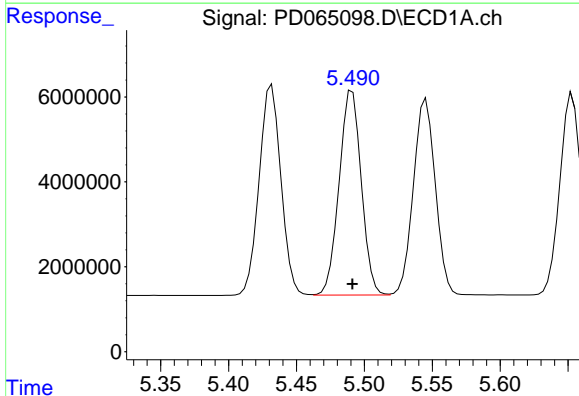


#25 Chlordane-3
 R.T.: 5.432 min
 Delta R.T.: 0.000 min
 Response: 55372213
 Conc: 501.69 ng/ml

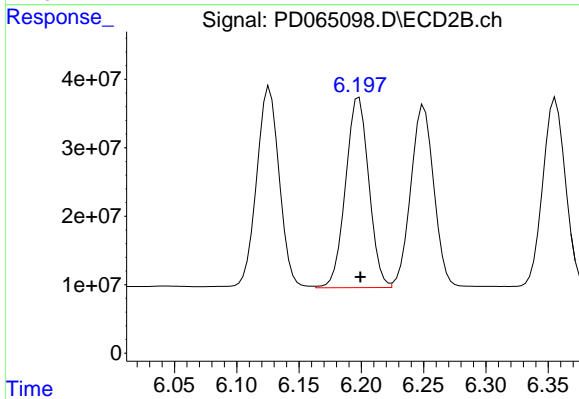
Instrument :
 ECD_D
 ClientSampled :



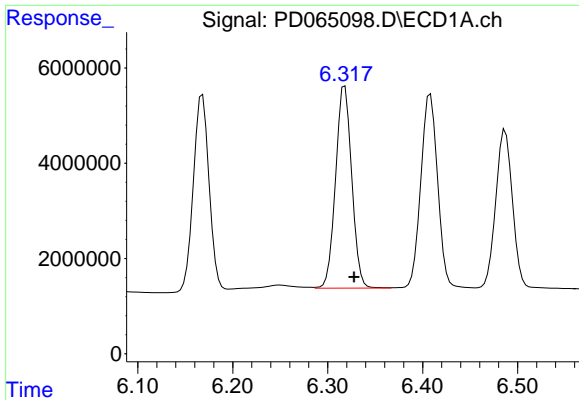
#25 Chlordane-3
 R.T.: 6.126 min
 Delta R.T.: 0.000 min
 Response: 378389652
 Conc: 366.00 ng/ml



#26 Chlordane-4
 R.T.: 5.491 min
 Delta R.T.: 0.000 min
 Response: 54779366
 Conc: 596.70 ng/ml

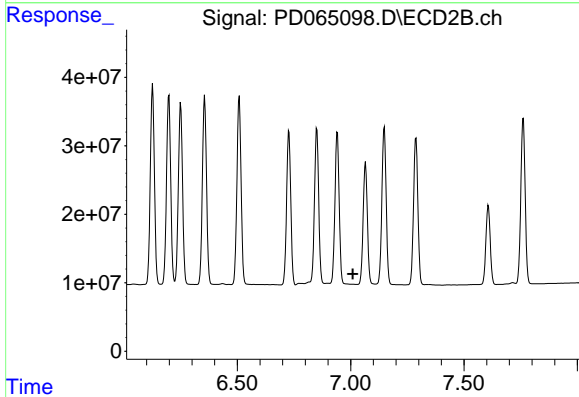


#26 Chlordane-4
 R.T.: 6.198 min
 Delta R.T.: -0.001 min
 Response: 362602472
 Conc: 301.59 ng/ml

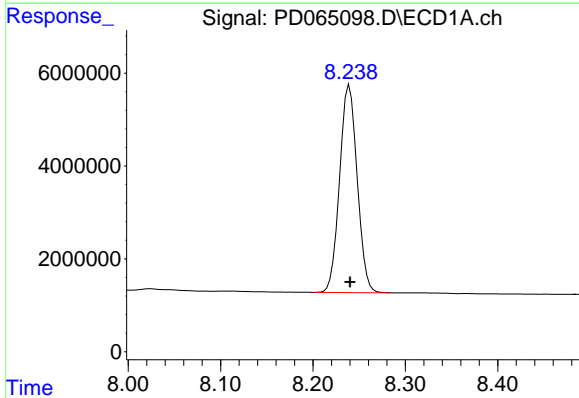


#27 Chlordane-5
 R.T.: 6.318 min
 Delta R.T.: -0.010 min
 Response: 50187464
 Conc: 1115.56 ng/ml

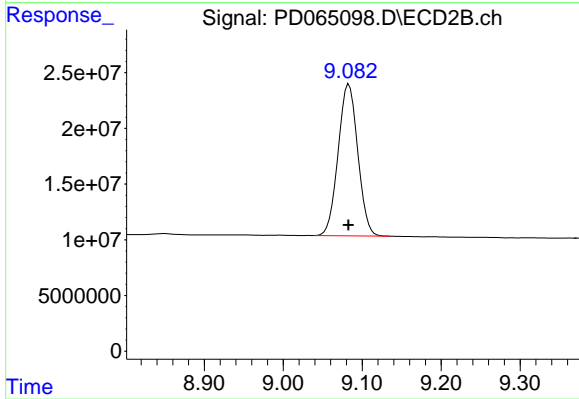
Instrument :
 ECD_D
 ClientSampled :



#27 Chlordane-5
 R.T.: 0.000 min
 Exp R.T. : 7.010 min
 Response: 0
 Conc: N.D.



#28 Decachlorobiphenyl
 R.T.: 8.240 min
 Delta R.T.: 0.000 min
 Response: 59150988
 Conc: 52.21 ng/ml



#28 Decachlorobiphenyl
 R.T.: 9.083 min
 Delta R.T.: 0.000 min
 Response: 235159176
 Conc: 49.69 ng/ml