

Data Path : Z:\pestpcbsrv\HPCHEM1\ECD_D\Data\PD082121\
 Data File : PD065116.D
 Signal(s) : Signal #1: ECD1A.ch Signal #2: ECD2B.ch
 Acq On : 20 Aug 2021 17:33
 Operator : AR\AJ
 Sample : M3435-07
 Misc :
 ALS Vial : 18 Sample Multiplier: 1

Instrument :
 ECD_D
 ClientSampleId :

Integration File signal 1: autoint1.e
 Integration File signal 2: autoint2.e
 Quant Time: Aug 21 00:35:33 2021
 Quant Method : Z:\pestpcbsrv\HPCHEM1\ECD_D\Method\PD082021.M
 Quant Title : GC Extractables
 QLast Update : Fri Aug 20 02:25:41 2021
 Response via : Initial Calibration
 Integrator: ChemStation

Volume Inj. : 2 µl
 Signal #1 Phase : ZB-MR2 Signal #2 Phase: ZB-MR1
 Signal #1 Info : 30M x 0.32mm x0.2 Signal #2 Info : 30M x 0.32mm x 0.50µm

	Compound	RT#1	RT#2	Resp#1	Resp#2	ng/ml	ng/ml

System Monitoring Compounds							
1)	SA Tetrachlo...	3.496	4.013	13594519	105.0E6	13.226	13.260
28)	SA Decachlor...	8.241	9.085	15337568	54655163	13.537	11.549
Target Compounds							
5)	MB Aldrin	0.000	5.477f	0	1154706	N.D.	0.128 #
7)	B delta-BHC	0.000	5.112f	0	2063872	N.D.	0.213 #
8)	B Heptachlo...	0.000	5.882	0	8833551	N.D.	1.184 #
9)	A Endosulfan I	0.000	6.235	0	3699876	N.D.	0.525 #
10)	B gamma-Chl...	5.451f	6.131	539653	13591883	0.477	1.778 #
11)	B alpha-Chl...	0.000	6.199	0	15741766	N.D.	2.115 #
12)	B 4,4'-DDE	5.653	6.357	878053	17629994	0.833	2.455 #
13)	MA Dieldrin	5.779	6.496	1284685	2583341	1.145	0.356 #
14)	MA Endrin	0.000	6.718	0	3123697	N.D.	0.508 #
15)	B Endosulfa...	0.000	6.918f	0	1966971	N.D.	0.335 #
16)	A 4,4'-DDD	0.000	6.852	0	10278075	N.D.	1.748 #
17)	MA 4,4'-DDT	6.405	7.149	2889615	5780511	2.906	0.964 #
18)	B Endrin al...	6.497	0.000	1045216	0	1.263	N.D. #
19)	B Endosulfa...	6.692	0.000	2046598	0	1.927	N.D. #
20)	A Methoxychlor	6.936f	0.000	4252018	0	7.214	N.D. #
21)	B Endrin ke...	7.211f	0.000	5239487	0	4.110	N.D. #
22)	Mirex	0.000	8.230f	0	5444056	N.D.	1.223 #
24)	Chlordane-2	0.000	5.477	0	1154706	N.D.	3.691 #
25)	Chlordane-3	5.451f	6.131	539653	13591883	4.889	13.147 #
26)	Chlordane-4	0.000	6.199	0	15741766	N.D.	13.093 #

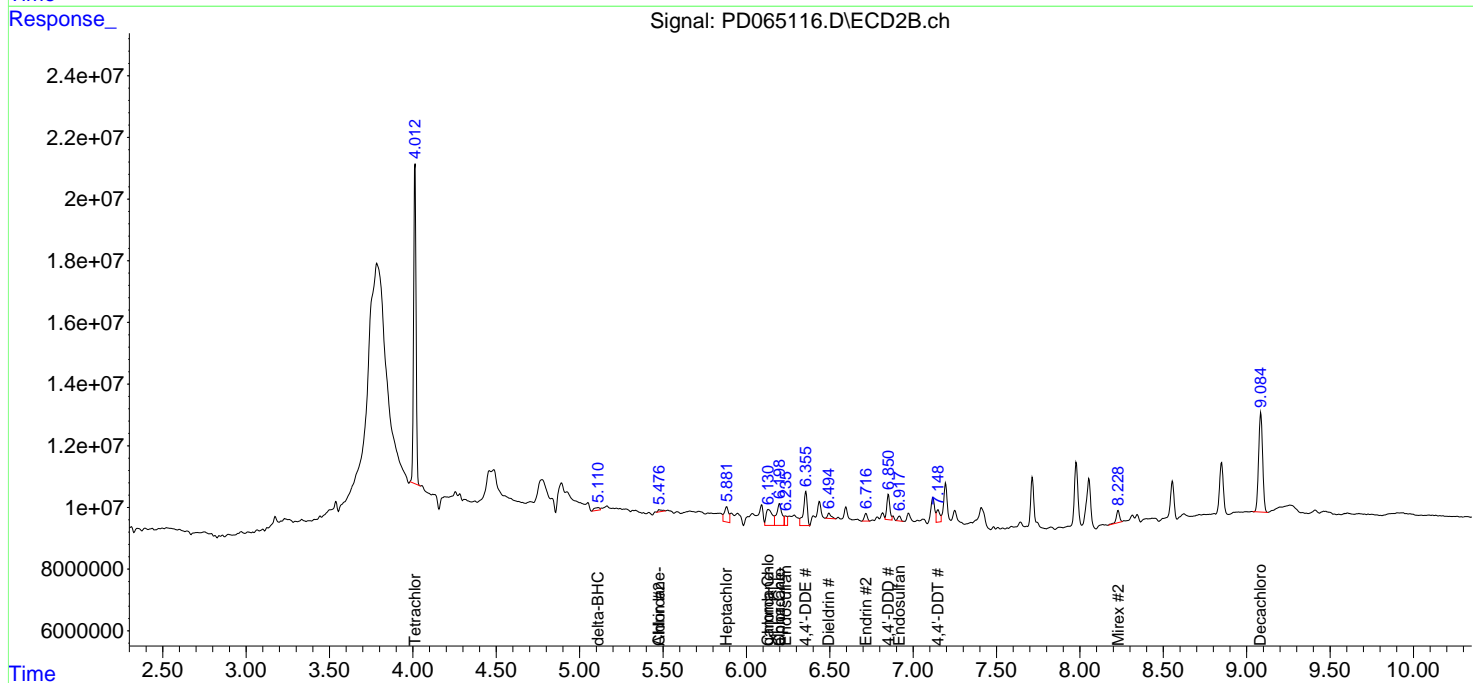
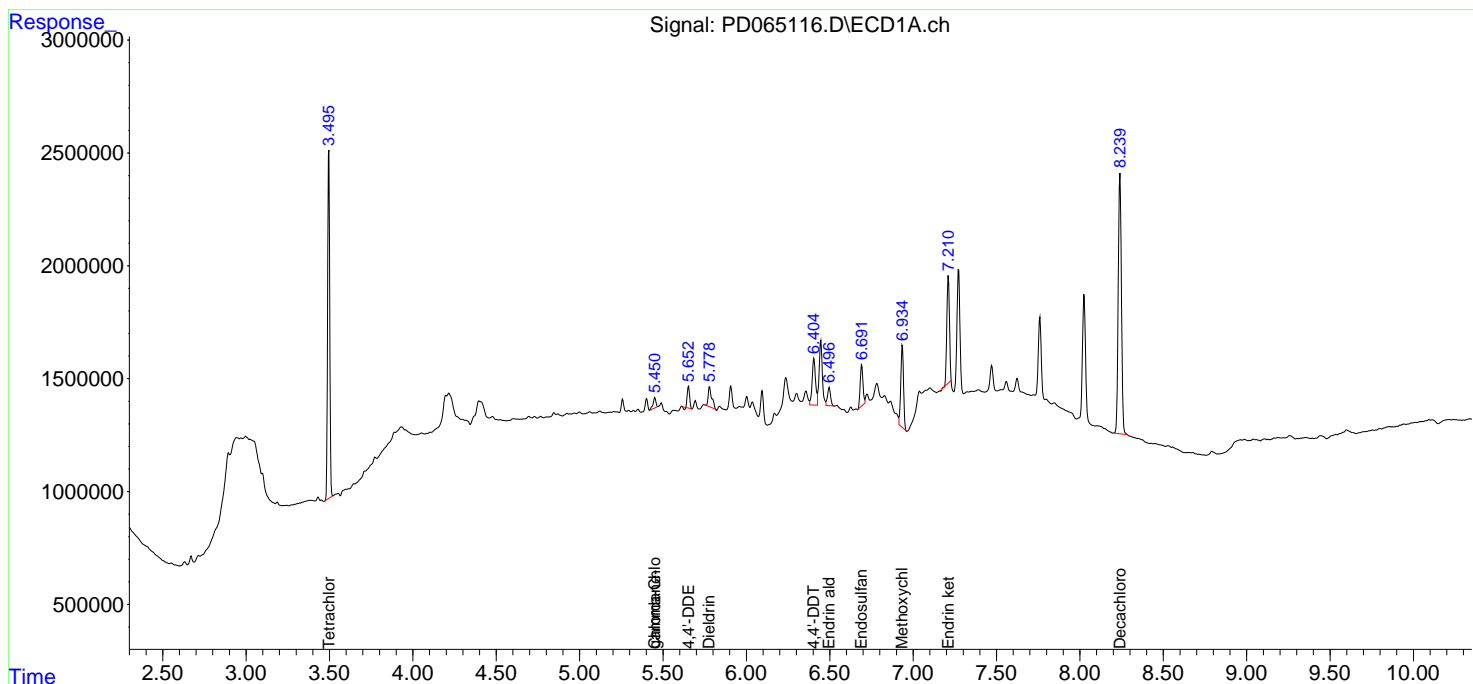
(f)=RT Delta > 1/2 Window (#)=Amounts differ by > 25% (m)=manual int.

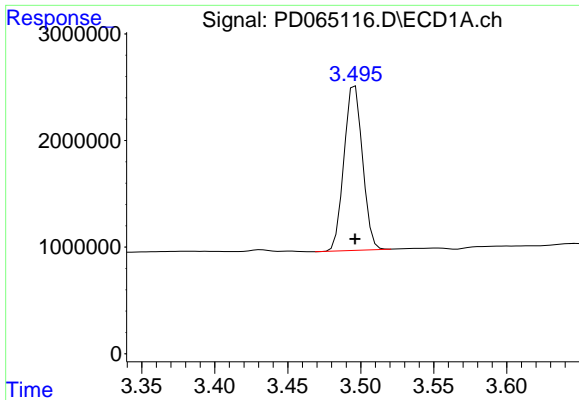
Data Path : Z:\pestpcbsrv\HPCHEM1\ECD_D\Data\PD082121\
 Data File : PD065116.D
 Signal(s) : Signal #1: ECD1A.ch Signal #2: ECD2B.ch
 Acq On : 20 Aug 2021 17:33
 Operator : AR\AJ
 Sample : M3435-07
 Misc :
 ALS Vial : 18 Sample Multiplier: 1

Instrument :
 ECD_D
 ClientSampled :

Integration File signal 1: autoint1.e
 Integration File signal 2: autoint2.e
 Quant Time: Aug 21 00:35:33 2021
 Quant Method : Z:\pestpcbsrv\HPCHEM1\ECD_D\Method\PD082021.M
 Quant Title : GC Extractables
 QLast Update : Fri Aug 20 02:25:41 2021
 Response via : Initial Calibration
 Integrator: ChemStation

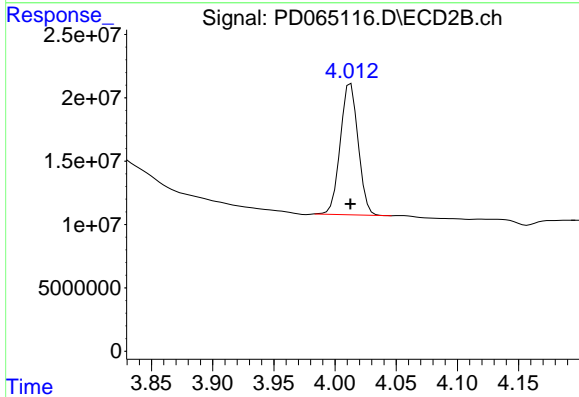
Volume Inj. : 2 µl
 Signal #1 Phase : ZB-MR2 Signal #2 Phase: ZB-MR1
 Signal #1 Info : 30M x 0.32mm x0.2 Signal #2 Info : 30M x 0.32mm x 0.50µm



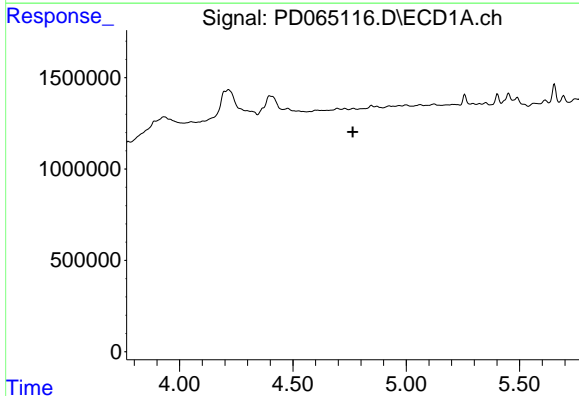


#1 Tetrachloro-m-xylene
 R.T.: 3.496 min
 Delta R.T.: 0.000 min
 Response: 13594519
 Conc: 13.23 ng/ml

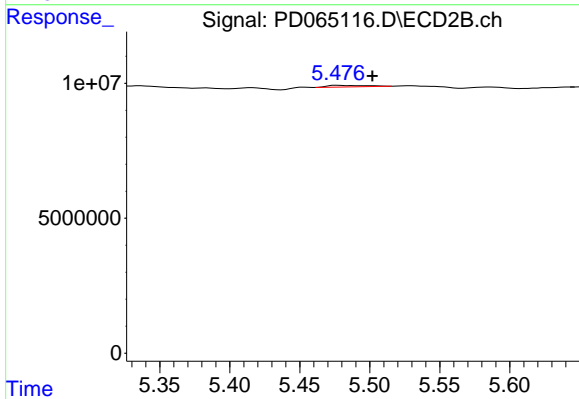
Instrument :
 ECD_D
 ClientSampleId :



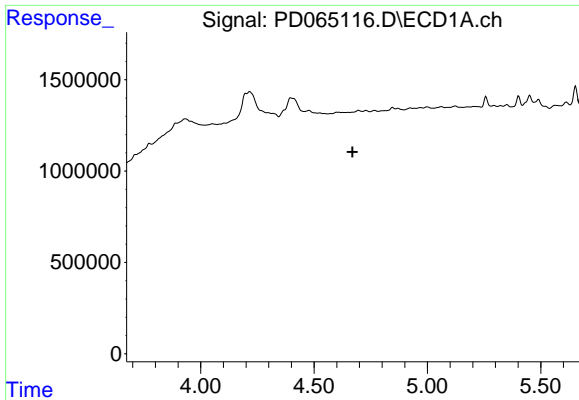
#1 Tetrachloro-m-xylene
 R.T.: 4.013 min
 Delta R.T.: 0.000 min
 Response: 105030613
 Conc: 13.26 ng/ml



#5 Aldrin
 R.T.: 0.000 min
 Exp R.T. : 4.765 min
 Response: 0
 Conc: N.D.



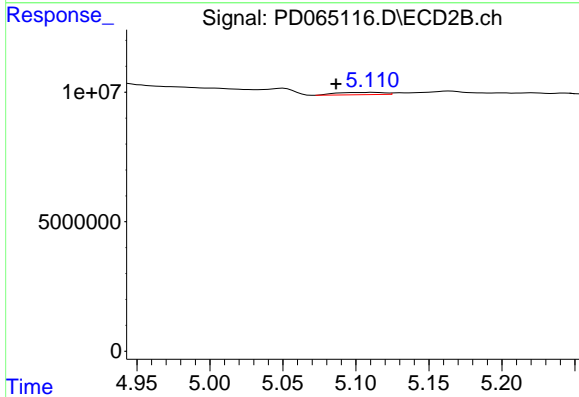
#5 Aldrin
 R.T.: 5.477 min
 Delta R.T.: -0.025 min
 Response: 1154706
 Conc: 0.13 ng/ml



#7 delta-BHC

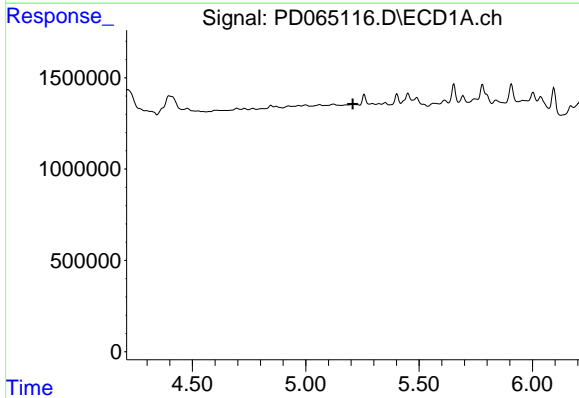
R.T.: 0.000 min
 Exp R.T. : 4.670 min
 Response: 0
 Conc: N.D.

Instrument :
 ECD_D
 ClientSampleId :



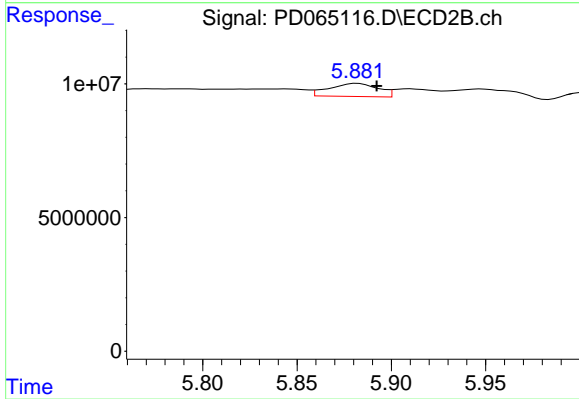
#7 delta-BHC

R.T.: 5.112 min
 Delta R.T.: 0.025 min
 Response: 2063872
 Conc: 0.21 ng/ml



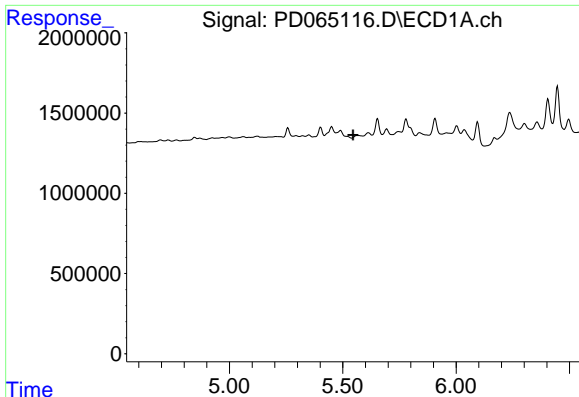
#8 Heptachlor epoxide

R.T.: 0.000 min
 Exp R.T. : 5.207 min
 Response: 0
 Conc: N.D.



#8 Heptachlor epoxide

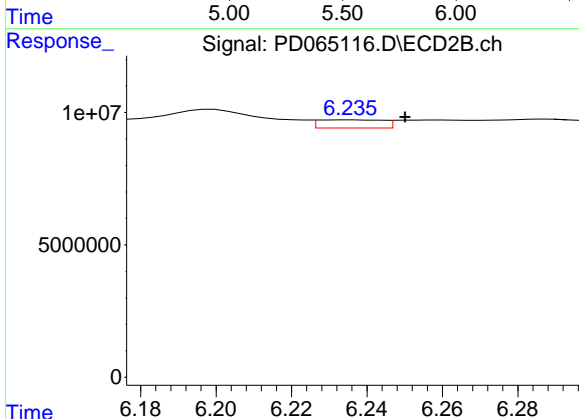
R.T.: 5.882 min
 Delta R.T.: -0.010 min
 Response: 8833551
 Conc: 1.18 ng/ml



#9 Endosulfan I

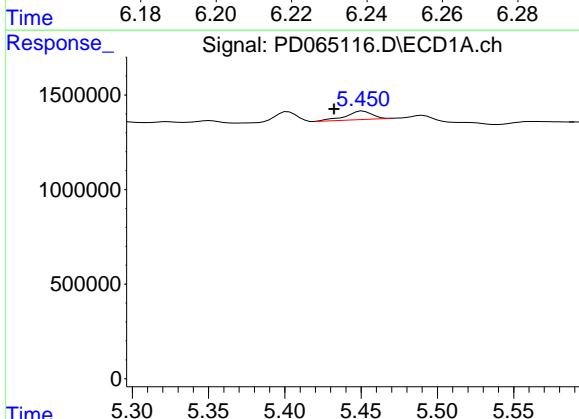
R.T.: 0.000 min
 Exp R.T.: 5.546 min
 Response: 0
 Conc: N.D.

Instrument :
 ECD_D
 ClientSampleId :



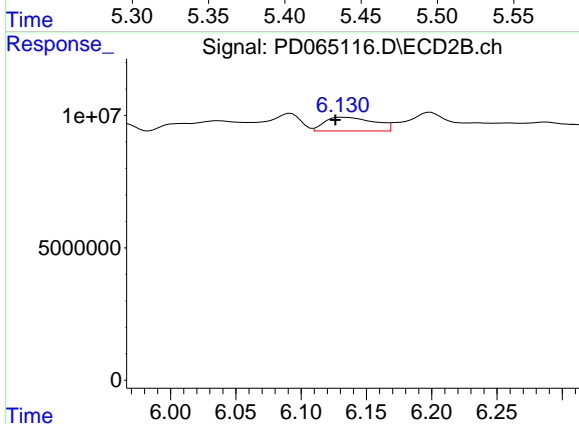
#9 Endosulfan I

R.T.: 6.235 min
 Delta R.T.: -0.015 min
 Response: 3699876
 Conc: 0.53 ng/ml



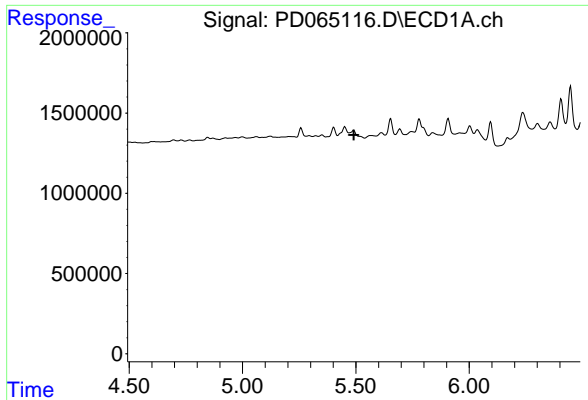
#10 gamma-Chlordane

R.T.: 5.451 min
 Delta R.T.: 0.019 min
 Response: 539653
 Conc: 0.48 ng/ml



#10 gamma-Chlordane

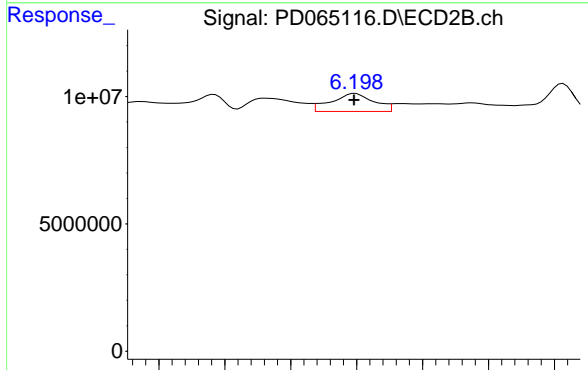
R.T.: 6.131 min
 Delta R.T.: 0.005 min
 Response: 13591883
 Conc: 1.78 ng/ml



#11 alpha-Chlordane

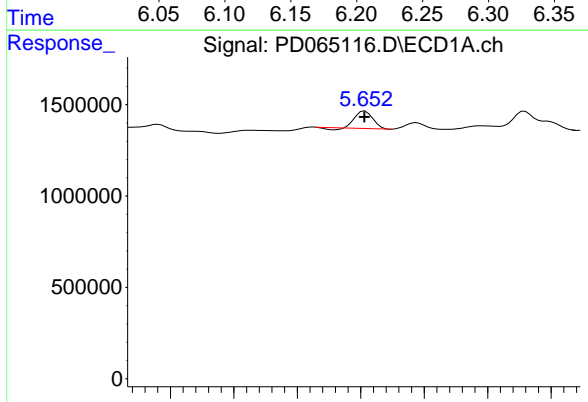
R.T.: 0.000 min
 Exp R.T.: 5.491 min
 Response: 0
 Conc: N.D.

Instrument :
 ECD_D
 ClientSampleId :



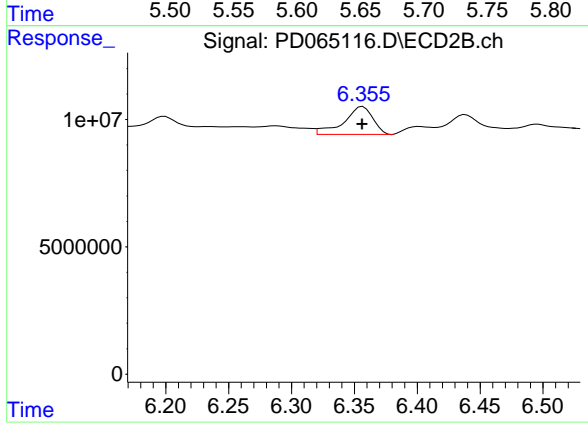
#11 alpha-Chlordane

R.T.: 6.199 min
 Delta R.T.: 0.000 min
 Response: 15741766
 Conc: 2.11 ng/ml



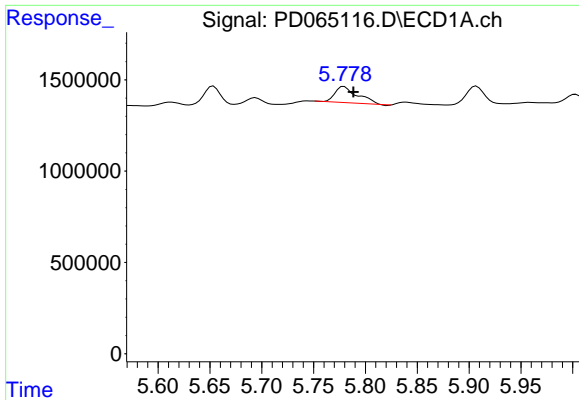
#12 4,4'-DDE

R.T.: 5.653 min
 Delta R.T.: 0.000 min
 Response: 878053
 Conc: 0.83 ng/ml



#12 4,4'-DDE

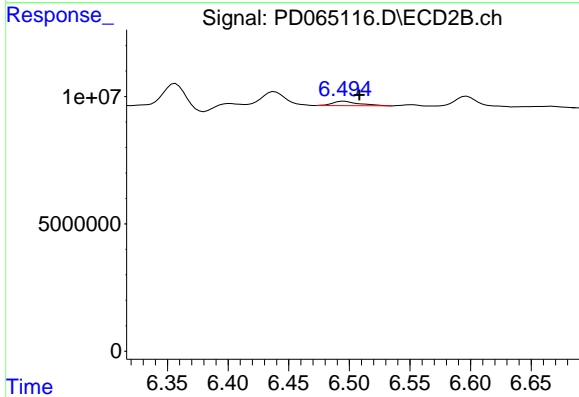
R.T.: 6.357 min
 Delta R.T.: 0.000 min
 Response: 17629994
 Conc: 2.46 ng/ml



#13 Dieldrin

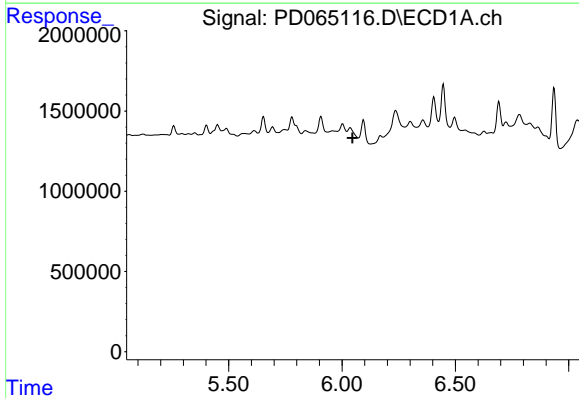
R.T.: 5.779 min
 Delta R.T.: -0.009 min
 Response: 1284685
 Conc: 1.14 ng/ml

Instrument :
 ECD_D
 ClientSampled :



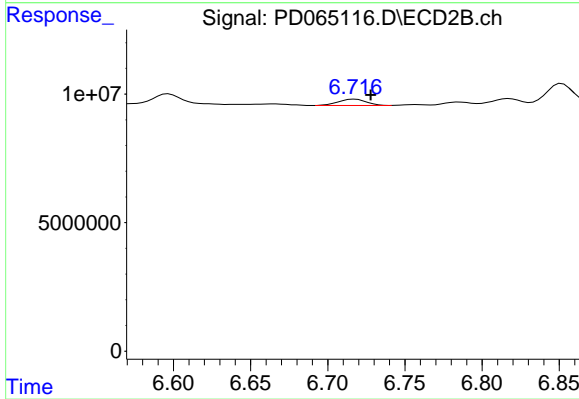
#13 Dieldrin

R.T.: 6.496 min
 Delta R.T.: -0.013 min
 Response: 2583341
 Conc: 0.36 ng/ml



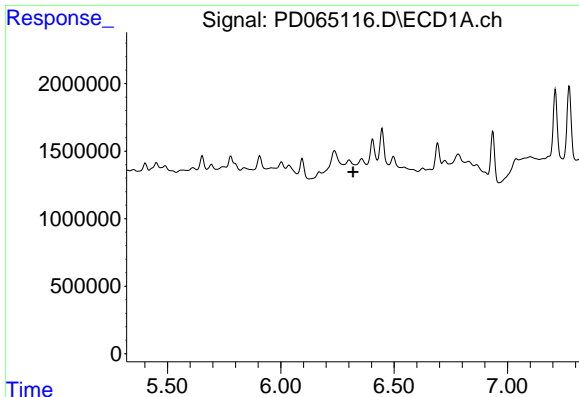
#14 Endrin

R.T.: 0.000 min
 Exp R.T. : 6.046 min
 Response: 0
 Conc: N.D.



#14 Endrin

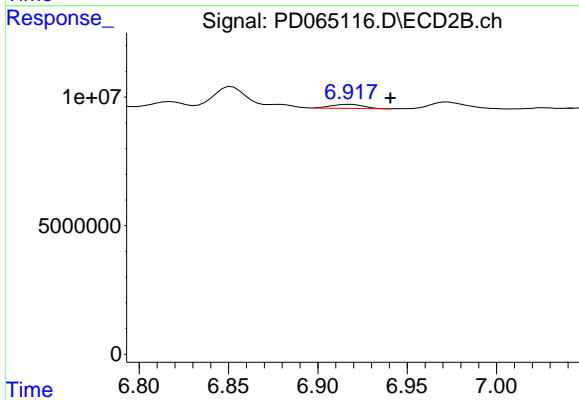
R.T.: 6.718 min
 Delta R.T.: -0.010 min
 Response: 3123697
 Conc: 0.51 ng/ml



#15 Endosulfan II

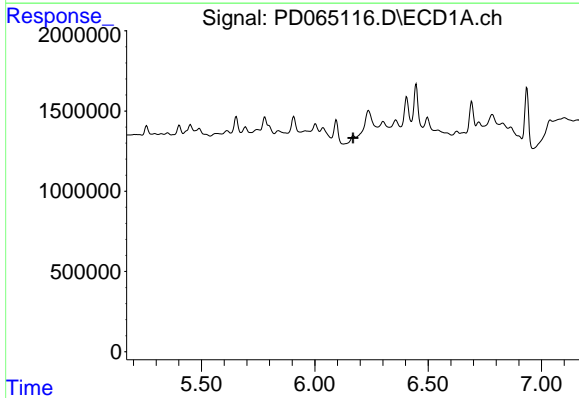
R.T.: 0.000 min
 Exp R.T. : 6.319 min
 Response: 0
 Conc: N.D.

Instrument :
 ECD_D
 ClientSampleId :



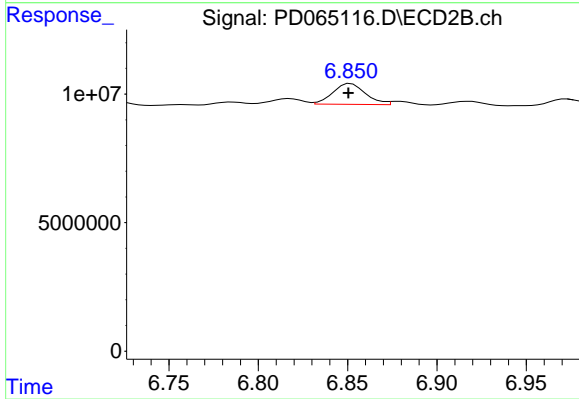
#15 Endosulfan II

R.T.: 6.918 min
 Delta R.T.: -0.022 min
 Response: 1966971
 Conc: 0.34 ng/ml



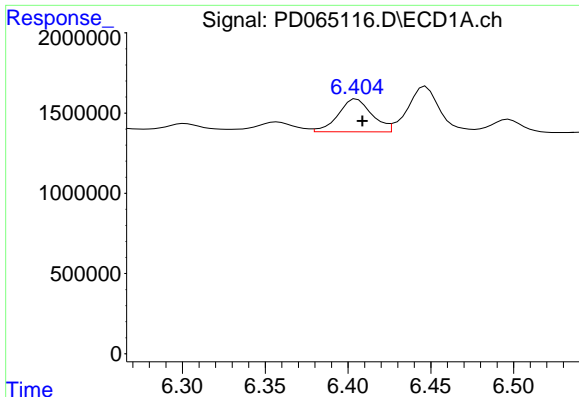
#16 4,4'-DDD

R.T.: 0.000 min
 Exp R.T. : 6.169 min
 Response: 0
 Conc: N.D.



#16 4,4'-DDD

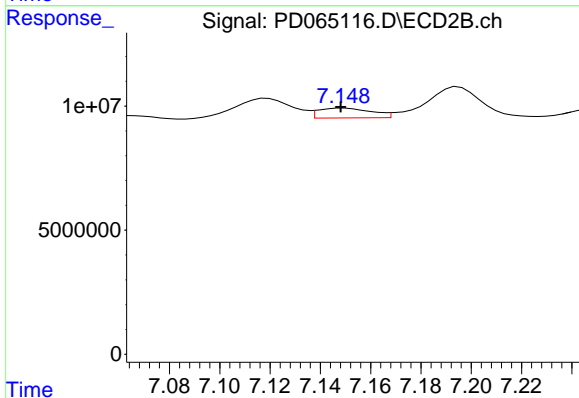
R.T.: 6.852 min
 Delta R.T.: 0.001 min
 Response: 10278075
 Conc: 1.75 ng/ml



#17 4,4'-DDT

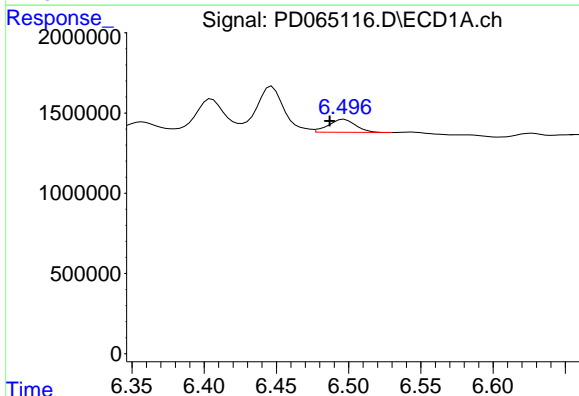
R.T.: 6.405 min
 Delta R.T.: -0.003 min
 Response: 2889615
 Conc: 2.91 ng/ml

Instrument :
 ECD_D
 ClientSampleId :



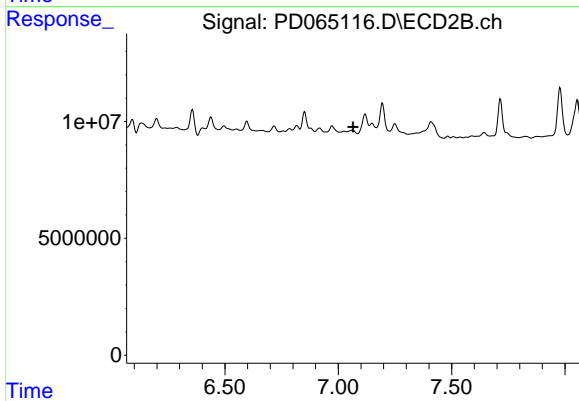
#17 4,4'-DDT

R.T.: 7.149 min
 Delta R.T.: 0.001 min
 Response: 5780511
 Conc: 0.96 ng/ml



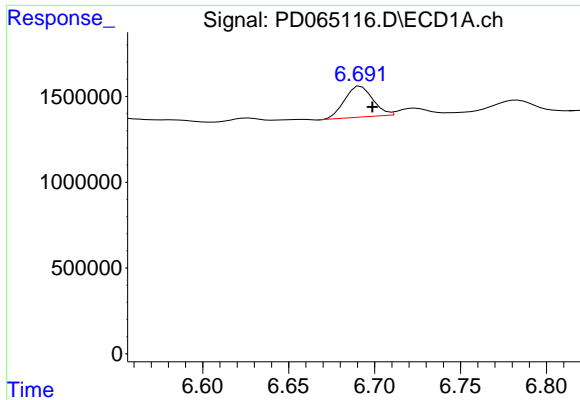
#18 Endrin aldehyde

R.T.: 6.497 min
 Delta R.T.: 0.010 min
 Response: 1045216
 Conc: 1.26 ng/ml



#18 Endrin aldehyde

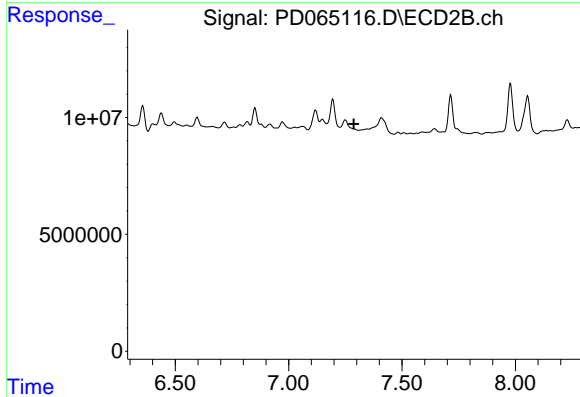
R.T.: 0.000 min
 Exp R.T. : 7.065 min
 Response: 0
 Conc: N.D.



#19 Endosulfan Sulfate

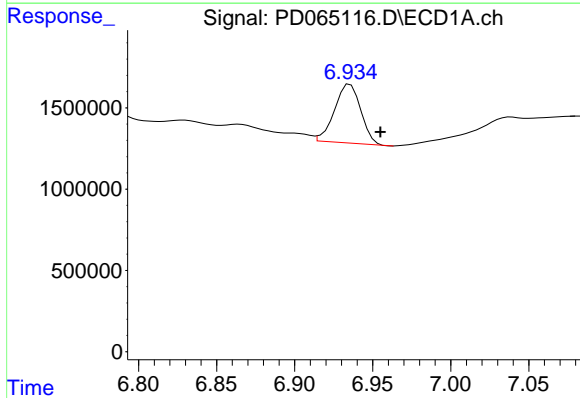
R.T.: 6.692 min
 Delta R.T.: -0.007 min
 Response: 2046598
 Conc: 1.93 ng/ml

Instrument :
 ECD_D
 ClientSampleId :



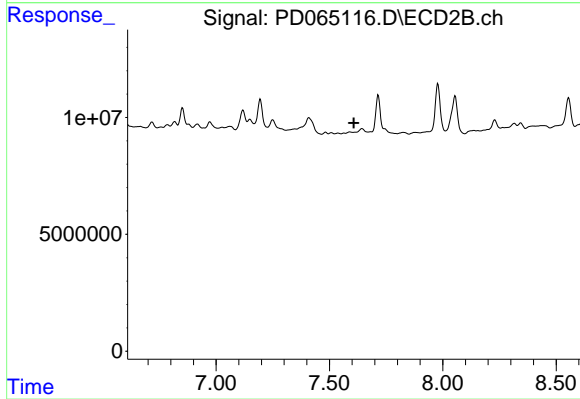
#19 Endosulfan Sulfate

R.T.: 0.000 min
 Exp R.T. : 7.287 min
 Response: 0
 Conc: N.D.



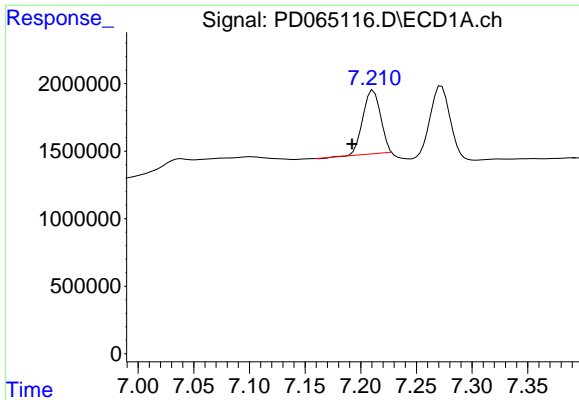
#20 Methoxychlor

R.T.: 6.936 min
 Delta R.T.: -0.019 min
 Response: 4252018
 Conc: 7.21 ng/ml



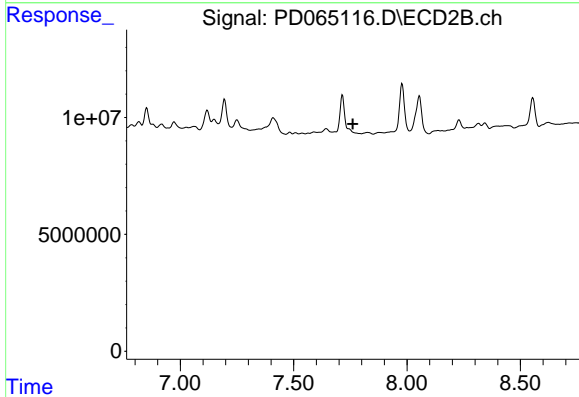
#20 Methoxychlor

R.T.: 0.000 min
 Exp R.T. : 7.607 min
 Response: 0
 Conc: N.D.

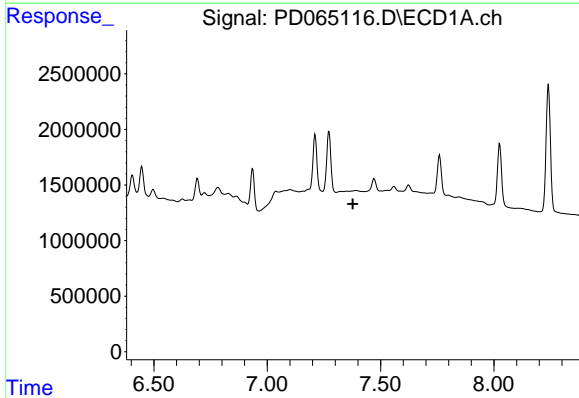


#21 Endrin ketone
 R.T.: 7.211 min
 Delta R.T.: 0.019 min
 Response: 5239487
 Conc: 4.11 ng/ml

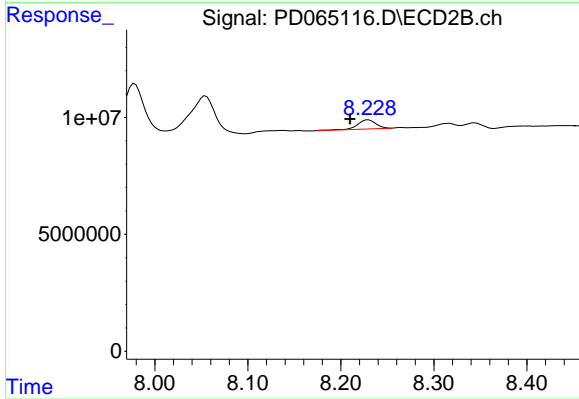
Instrument :
 ECD_D
 ClientSampled :



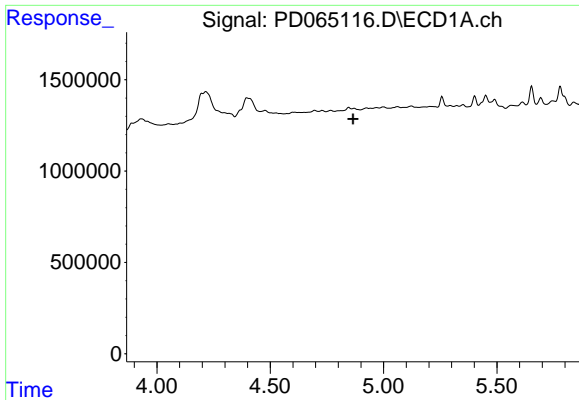
#21 Endrin ketone
 R.T.: 0.000 min
 Exp R.T. : 7.761 min
 Response: 0
 Conc: N.D.



#22 Mirex
 R.T.: 0.000 min
 Exp R.T. : 7.378 min
 Response: 0
 Conc: N.D.



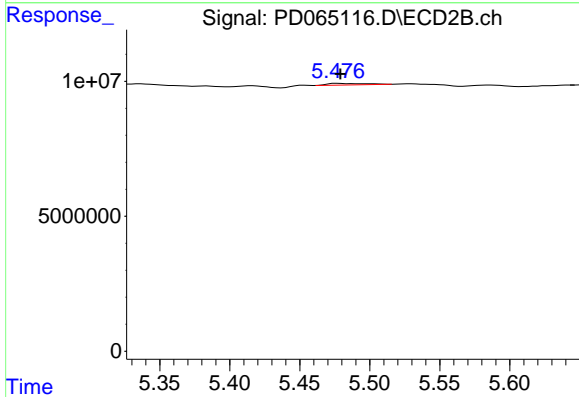
#22 Mirex
 R.T.: 8.230 min
 Delta R.T.: 0.020 min
 Response: 5444056
 Conc: 1.22 ng/ml



#24 Chlordane-2

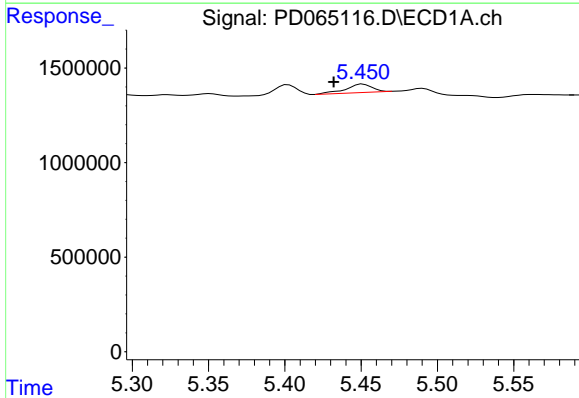
R.T.: 0.000 min
 Exp R.T.: 4.866 min
 Response: 0
 Conc: N.D.

Instrument :
 ECD_D
 ClientSampled :



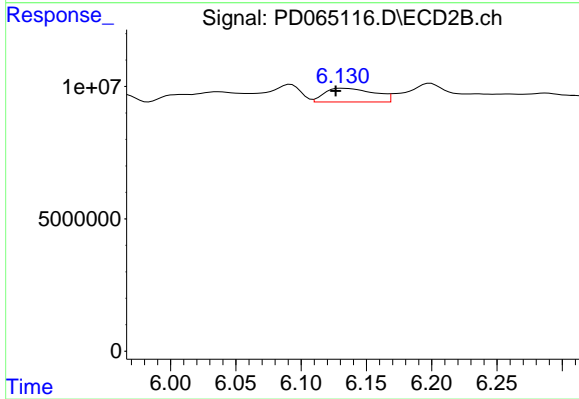
#24 Chlordane-2

R.T.: 5.477 min
 Delta R.T.: -0.002 min
 Response: 1154706
 Conc: 3.69 ng/ml



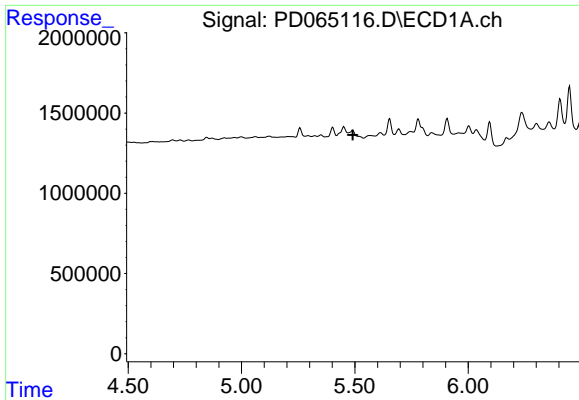
#25 Chlordane-3

R.T.: 5.451 min
 Delta R.T.: 0.019 min
 Response: 539653
 Conc: 4.89 ng/ml



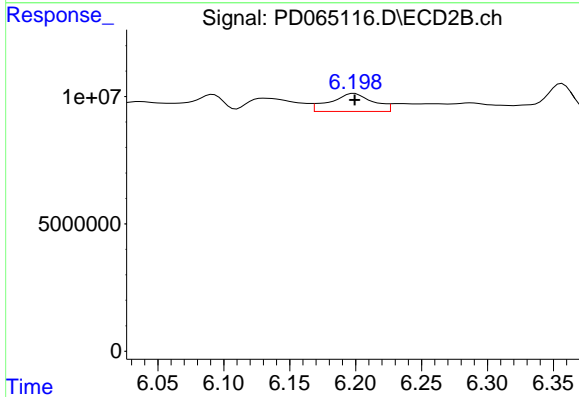
#25 Chlordane-3

R.T.: 6.131 min
 Delta R.T.: 0.005 min
 Response: 13591883
 Conc: 13.15 ng/ml

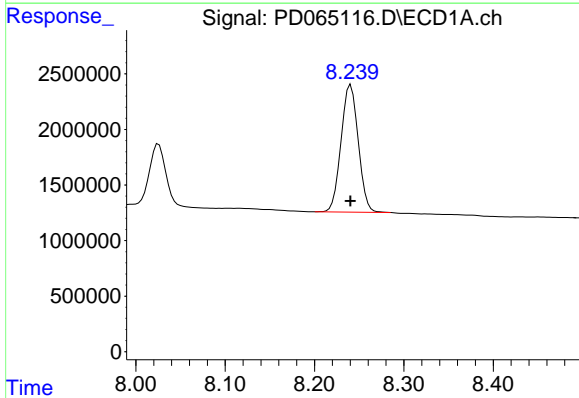


#26 Chlordane-4
 R.T.: 0.000 min
 Exp R.T.: 5.491 min
 Response: 0
 Conc: N.D.

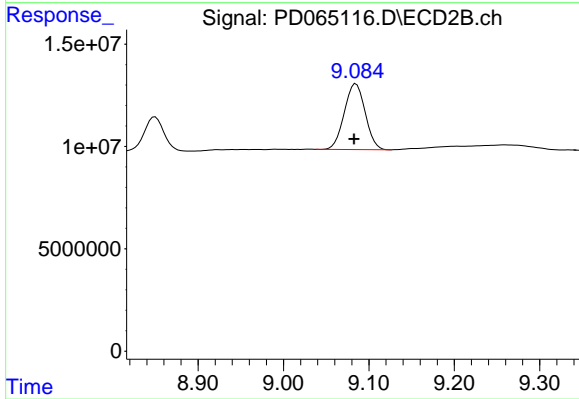
Instrument :
 ECD_D
 ClientSampled :



#26 Chlordane-4
 R.T.: 6.199 min
 Delta R.T.: 0.000 min
 Response: 15741766
 Conc: 13.09 ng/ml



#28 Decachlorobiphenyl
 R.T.: 8.241 min
 Delta R.T.: 0.000 min
 Response: 15337568
 Conc: 13.54 ng/ml



#28 Decachlorobiphenyl
 R.T.: 9.085 min
 Delta R.T.: 0.002 min
 Response: 54655163
 Conc: 11.55 ng/ml