

Data Path : Z:\pestpcbsrv\HPCHEM1\ECD_D\Data\PD082121\
 Data File : PD065131.D
 Signal(s) : Signal #1: ECD1A.ch Signal #2: ECD2B.ch
 Acq On : 20 Aug 2021 21:00
 Operator : AR\AJ
 Sample : M3435-29
 Misc :
 ALS Vial : 29 Sample Multiplier: 1

Instrument :
 ECD_D
 ClientSampleId :
 SWCS-22-0003

Integration File signal 1: autoint1.e
 Integration File signal 2: autoint2.e
 Quant Time: Aug 21 00:39:33 2021
 Quant Method : Z:\pestpcbsrv\HPCHEM1\ECD_D\Method\PD082021.M
 Quant Title : GC Extractables
 QLast Update : Fri Aug 20 02:25:41 2021
 Response via : Initial Calibration
 Integrator: ChemStation

Volume Inj. : 2 µl
 Signal #1 Phase : ZB-MR2 Signal #2 Phase: ZB-MR1
 Signal #1 Info : 30M x 0.32mm x0.2 Signal #2 Info : 30M x 0.32mm x 0.50µm

Compound	RT#1	RT#2	Resp#1	Resp#2	ng/ml	ng/ml

System Monitoring Compounds						
1) SA Tetrachlo...	3.495	4.012	7454469	57030399	7.252	7.200
28) SA Decachlor...	8.240	9.082	4054073	13412039	3.578	2.834
Target Compounds						
5) MB Aldrin	0.000	5.479f	0	832990	N.D.	0.092 #
7) B delta-BHC	0.000	5.109f	0	1290553	N.D.	0.133 #
10) B gamma-Chl...	0.000	6.126	0	5315828	N.D.	0.695 #
11) B alpha-Chl...	0.000	6.198	0	8088179	N.D.	1.086 #
12) B 4,4'-DDE	0.000	6.354	0	3890892	N.D.	0.542 #
17) MA 4,4'-DDT	0.000	7.119f	0	2106443	N.D.	0.351 #
20) A Methoxychlor	0.000	7.610	0	1806320	N.D.	0.597 #
24) Chlordane-2	0.000	5.479	0	832990	N.D.	2.663 #
25) Chlordane-3	0.000	6.126	0	5315828	N.D.	5.142 #
26) Chlordane-4	0.000	6.198	0	8088179	N.D.	6.727 #

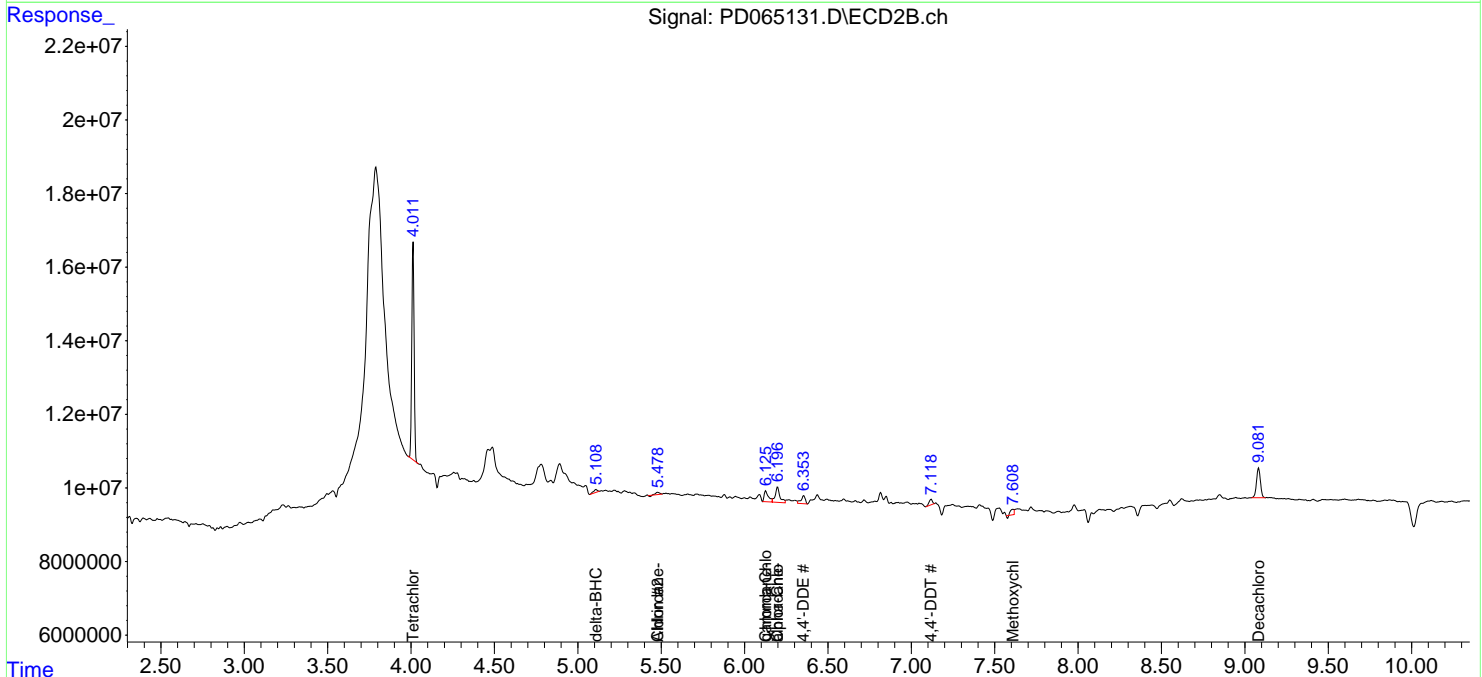
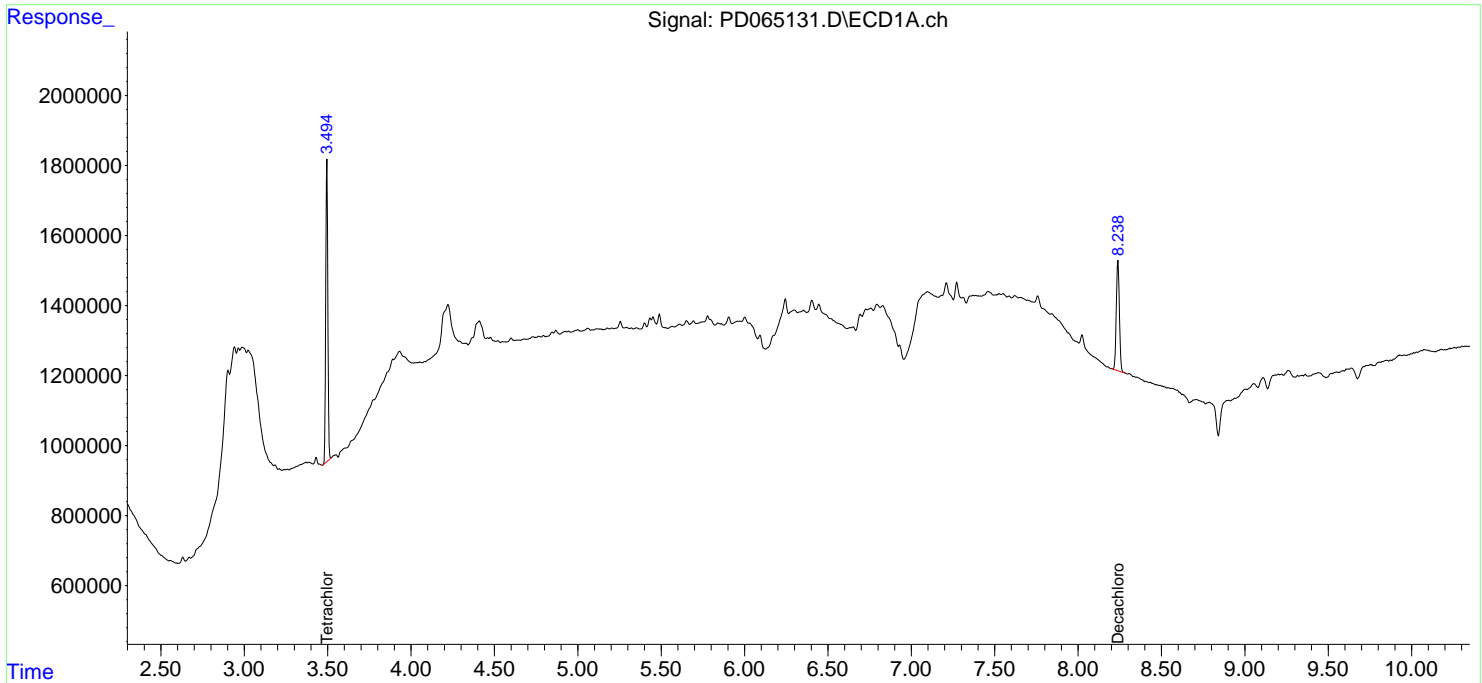
(f)=RT Delta > 1/2 Window (#)=Amounts differ by > 25% (m)=manual int.

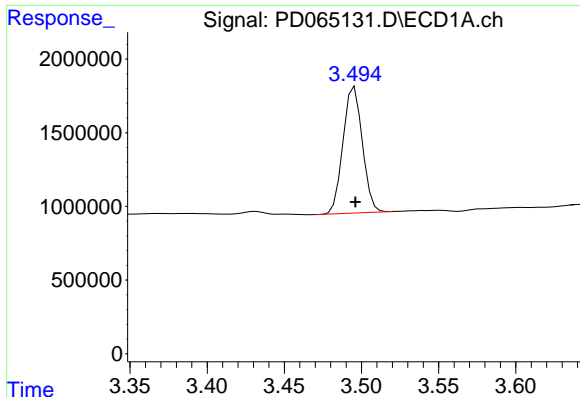
Data Path : Z:\pestpcbsrv\HPCHEM1\ECD_D\Data\PD082121\
 Data File : PD065131.D
 Signal(s) : Signal #1: ECD1A.ch Signal #2: ECD2B.ch
 Acq On : 20 Aug 2021 21:00
 Operator : AR\AJ
 Sample : M3435-29
 Misc :
 ALS Vial : 29 Sample Multiplier: 1

Instrument :
 ECD_D
Client Sampled :
 SWCS-22-0003

Integration File signal 1: autoint1.e
 Integration File signal 2: autoint2.e
 Quant Time: Aug 21 00:39:33 2021
 Quant Method : Z:\pestpcbsrv\HPCHEM1\ECD_D\Method\PD082021.M
 Quant Title : GC Extractables
 QLast Update : Fri Aug 20 02:25:41 2021
 Response via : Initial Calibration
 Integrator: ChemStation

Volume Inj. : 2 µl
 Signal #1 Phase : ZB-MR2 Signal #2 Phase: ZB-MR1
 Signal #1 Info : 30M x 0.32mm x0.2 Signal #2 Info : 30M x 0.32mm x 0.50µm

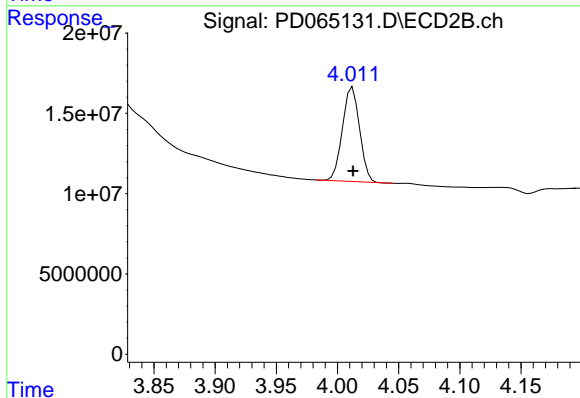




#1 Tetrachloro-m-xylene

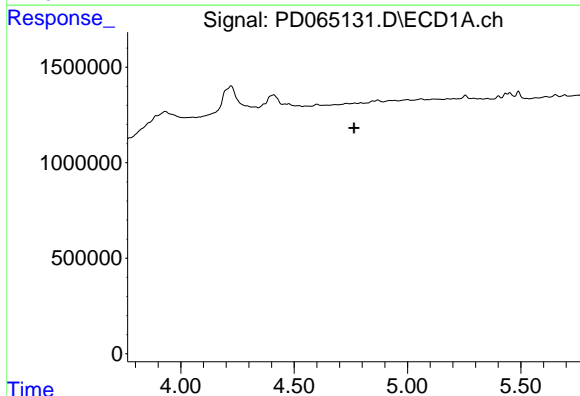
R.T.: 3.495 min
 Delta R.T.: 0.000 min
 Response: 7454469
 Conc: 7.25 ng/ml

Instrument :
 ECD_D
 ClientSampleId :
 SWCS-22-0003



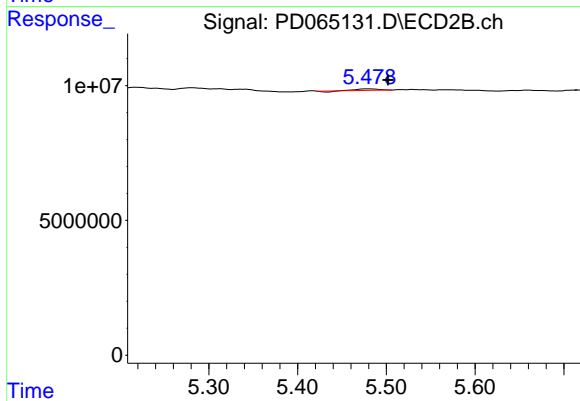
#1 Tetrachloro-m-xylene

R.T.: 4.012 min
 Delta R.T.: 0.000 min
 Response: 57030399
 Conc: 7.20 ng/ml



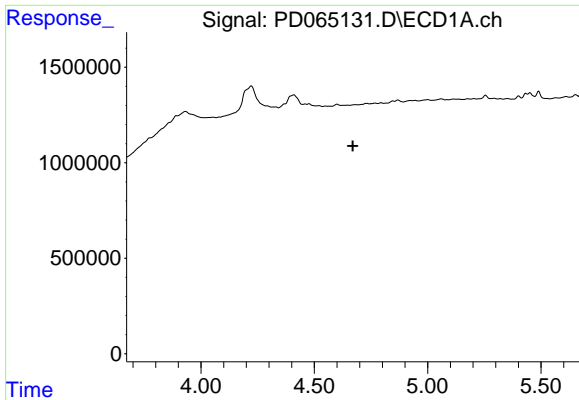
#5 Aldrin

R.T.: 0.000 min
 Exp R.T. : 4.765 min
 Response: 0
 Conc: N.D.



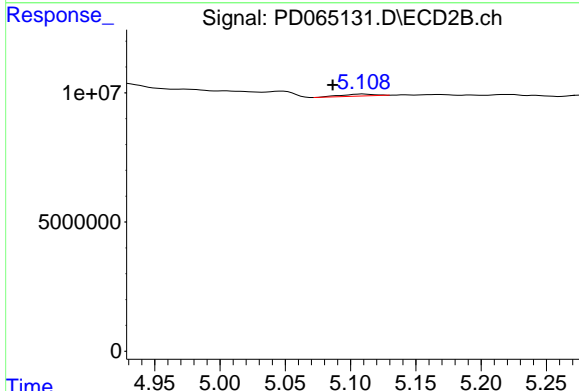
#5 Aldrin

R.T.: 5.479 min
 Delta R.T.: -0.023 min
 Response: 832990
 Conc: 0.09 ng/ml

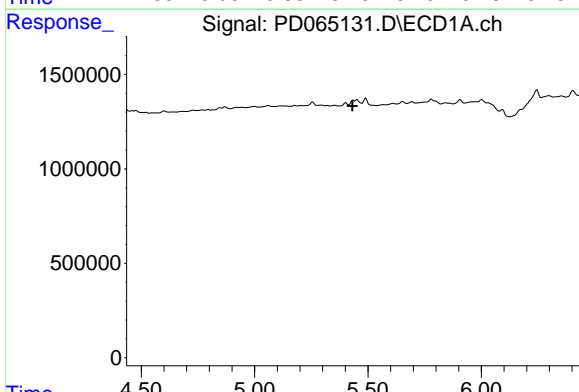


#7 delta-BHC
 R.T.: 0.000 min
 Exp R.T.: 4.670 min
 Response: 0
 Conc: N.D.

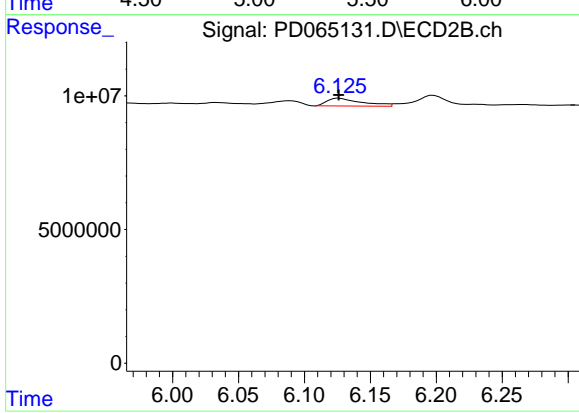
Instrument :
 ECD_D
 ClientSampleId :
 SWCS-22-0003



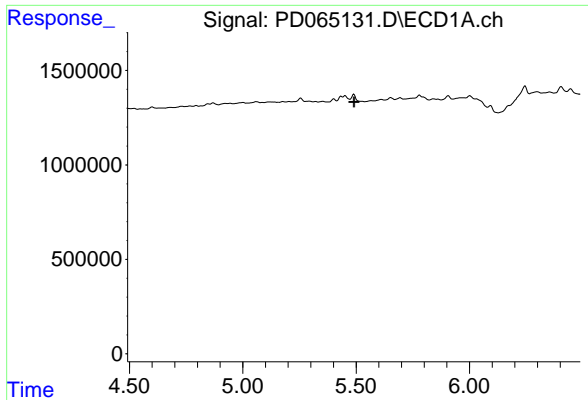
#7 delta-BHC
 R.T.: 5.109 min
 Delta R.T.: 0.023 min
 Response: 1290553
 Conc: 0.13 ng/ml



#10 gamma-Chlordane
 R.T.: 0.000 min
 Exp R.T.: 5.432 min
 Response: 0
 Conc: N.D.



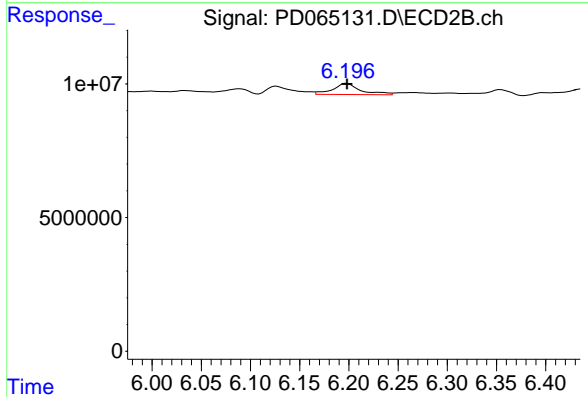
#10 gamma-Chlordane
 R.T.: 6.126 min
 Delta R.T.: 0.000 min
 Response: 5315828
 Conc: 0.70 ng/ml



#11 alpha-Chlordane

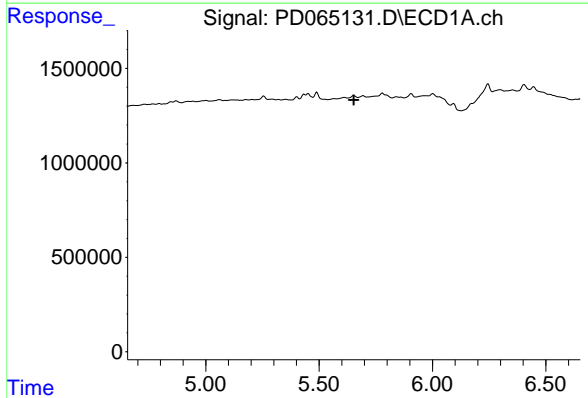
R.T.: 0.000 min
 Exp R.T. : 5.491 min
 Response: 0
 Conc: N.D.

Instrument :
 ECD_D
 ClientSampleId :
 SWCS-22-0003



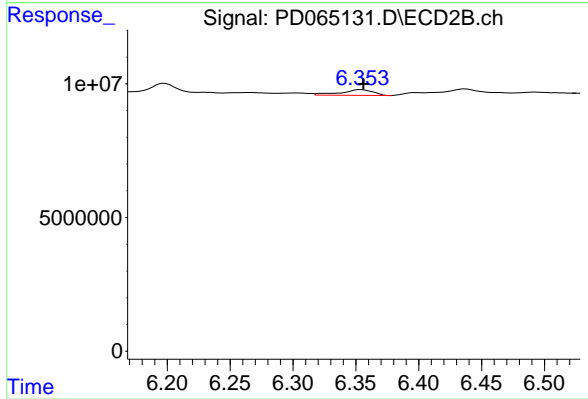
#11 alpha-Chlordane

R.T.: 6.198 min
 Delta R.T.: 0.000 min
 Response: 8088179
 Conc: 1.09 ng/ml



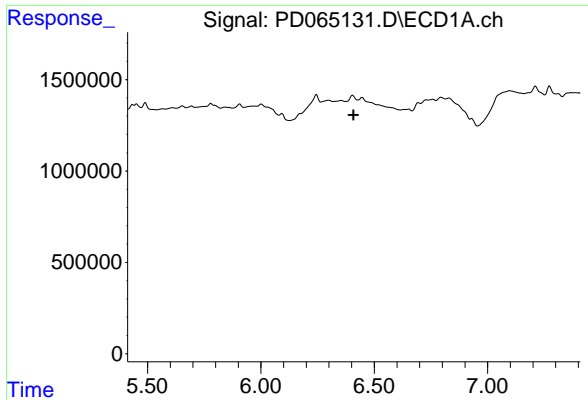
#12 4,4'-DDE

R.T.: 0.000 min
 Exp R.T. : 5.653 min
 Response: 0
 Conc: N.D.



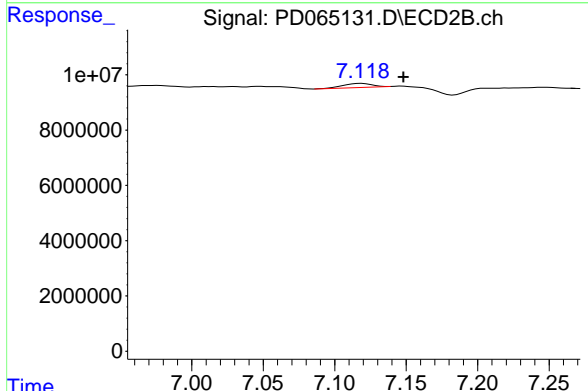
#12 4,4'-DDE

R.T.: 6.354 min
 Delta R.T.: -0.002 min
 Response: 3890892
 Conc: 0.54 ng/ml

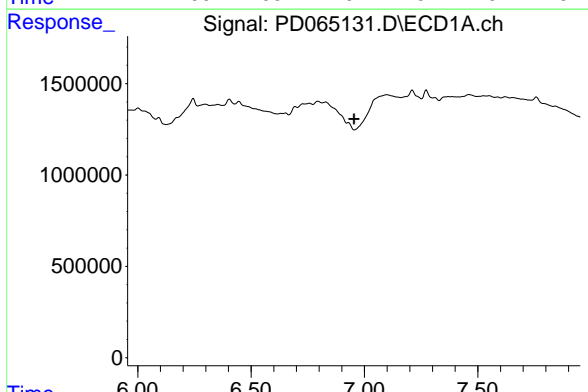


#17 4,4'-DDT
 R.T.: 0.000 min
 Exp R.T.: 6.409 min
 Response: 0
 Conc: N.D.

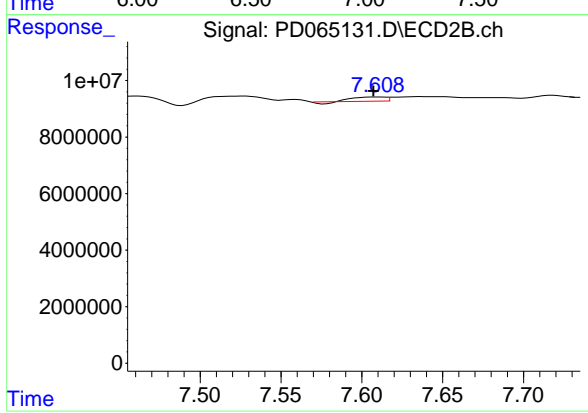
Instrument :
 ECD_D
 ClientSampleId :
 SWCS-22-0003



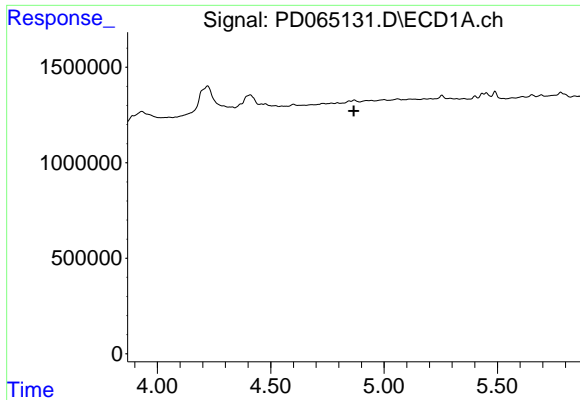
#17 4,4'-DDT
 R.T.: 7.119 min
 Delta R.T.: -0.029 min
 Response: 2106443
 Conc: 0.35 ng/ml



#20 Methoxychlor
 R.T.: 0.000 min
 Exp R.T.: 6.955 min
 Response: 0
 Conc: N.D.

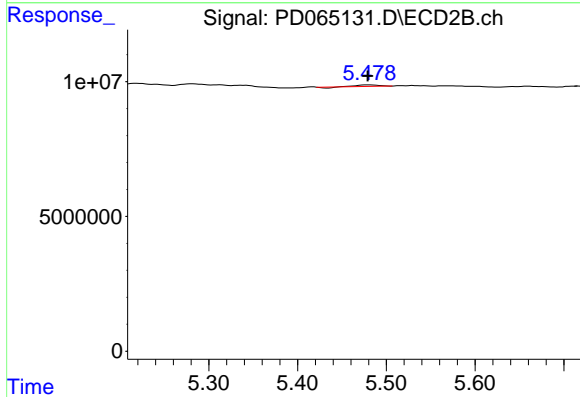


#20 Methoxychlor
 R.T.: 7.610 min
 Delta R.T.: 0.002 min
 Response: 1806320
 Conc: 0.60 ng/ml

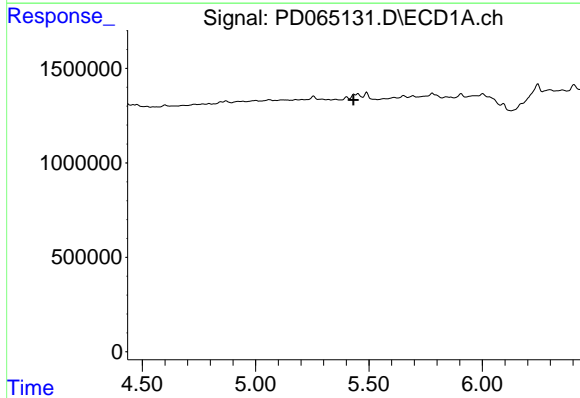


#24 Chlordane-2
 R.T.: 0.000 min
 Exp R.T.: 4.866 min
 Response: 0
 Conc: N.D.

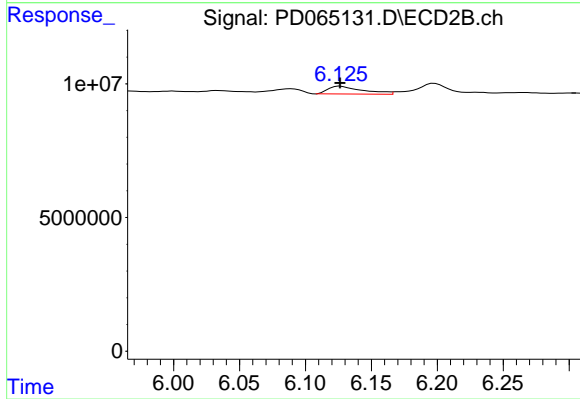
Instrument :
 ECD_D
 ClientSampleId :
 SWCS-22-0003



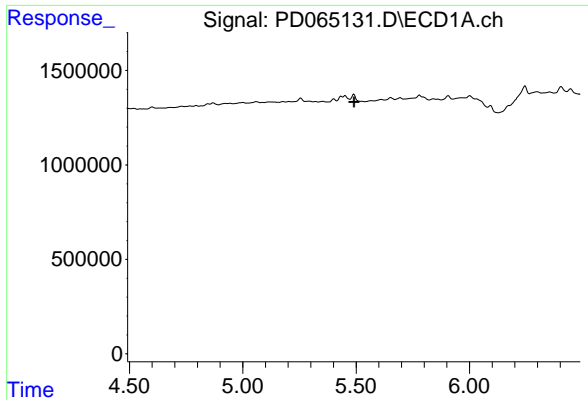
#24 Chlordane-2
 R.T.: 5.479 min
 Delta R.T.: 0.000 min
 Response: 832990
 Conc: 2.66 ng/ml



#25 Chlordane-3
 R.T.: 0.000 min
 Exp R.T.: 5.432 min
 Response: 0
 Conc: N.D.

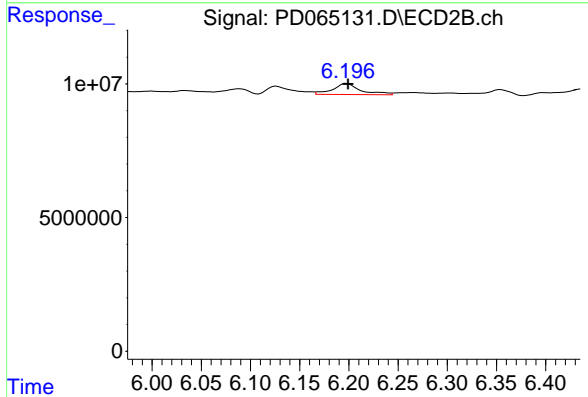


#25 Chlordane-3
 R.T.: 6.126 min
 Delta R.T.: 0.000 min
 Response: 5315828
 Conc: 5.14 ng/ml

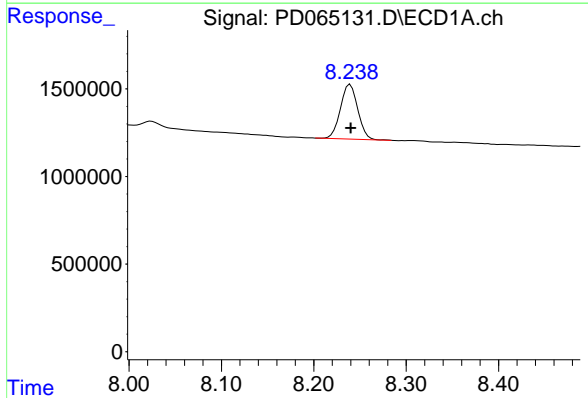


#26 Chlordane-4
 R.T.: 0.000 min
 Exp R.T.: 5.491 min
 Response: 0
 Conc: N.D.

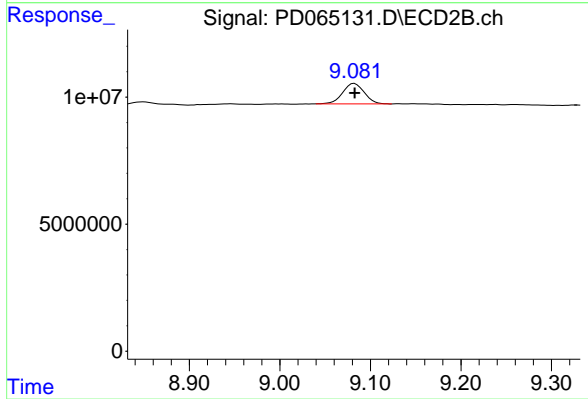
Instrument :
 ECD_D
ClientSampleId :
 SWCS-22-0003



#26 Chlordane-4
 R.T.: 6.198 min
 Delta R.T.: -0.001 min
 Response: 8088179
 Conc: 6.73 ng/ml



#28 Decachlorobiphenyl
 R.T.: 8.240 min
 Delta R.T.: 0.000 min
 Response: 4054073
 Conc: 3.58 ng/ml



#28 Decachlorobiphenyl
 R.T.: 9.082 min
 Delta R.T.: 0.000 min
 Response: 13412039
 Conc: 2.83 ng/ml