

Data Path : Z:\pestpcbsrv\HPCHEM1\ECD_D\Data\PD082121\
 Data File : PD065142.D
 Signal(s) : Signal #1: ECD1A.ch Signal #2: ECD2B.ch
 Acq On : 20 Aug 2021 23:59
 Operator : AR\AJ
 Sample : M3434-07MSD
 Misc :
 ALS Vial : 37 Sample Multiplier: 1

Instrument :
 ECD_D
 ClientSampled :

Integration File signal 1: autoint1.e
 Integration File signal 2: autoint2.e
 Quant Time: Aug 21 03:51:50 2021
 Quant Method : Z:\pestpcbsrv\HPCHEM1\ECD_D\Method\PD082021.M
 Quant Title : GC Extractables
 QLast Update : Fri Aug 20 02:25:41 2021
 Response via : Initial Calibration
 Integrator: ChemStation

Volume Inj. : 2 µl
 Signal #1 Phase : ZB-MR2 Signal #2 Phase: ZB-MR1
 Signal #1 Info : 30M x 0.32mm x0.2 Signal #2 Info : 30M x 0.32mm x 0.50µm

Compound	RT#1	RT#2	Resp#1	Resp#2	ng/ml	ng/ml

System Monitoring Compounds						
1) SA Tetrachlo...	3.495	4.013	20016565	176.3E6	19.473	22.255
28) SA Decachlor...	8.239	9.083	22420431	87116830	19.788	18.408
Target Compounds						
2) A alpha-BHC	3.935	4.407	63332762	491.8E6	44.252	42.338
3) MA gamma-BHC...	4.218	4.694	60379352	465.7E6	44.010	43.959
4) MA Heptachlor	4.517	5.198	58963017	464.4E6	45.270	46.318
5) MB Aldrin	4.765	5.503	55023627	405.6E6	45.883	44.898
6) B beta-BHC	4.466	4.869	29615843	215.7E6	45.037	47.759
7) B delta-BHC	4.671	5.086	31656414	246.5E6	23.944	25.384
8) B Heptachlo...	5.207	5.892	53102722	350.4E6	46.730	46.972
9) A Endosulfan I	5.545	6.250	50367571	326.9E6	47.218	46.421
10) B gamma-Chl...	5.431	6.125	53568891	352.3E6	47.378	46.073
11) B alpha-Chl...	5.490	6.198	52494759	341.6E6	46.885	45.880
12) B 4,4'-DDE	5.653	6.356	51176626	339.5E6	48.558	47.279
13) MA Dieldrin	5.788	6.508	54864368	345.9E6	48.887	47.667
14) MA Endrin	6.046	6.727	49486606	289.3E6	47.157	46.996
15) B Endosulfa...	6.318	6.940	49380292	288.3E6	49.387	49.164
16) A 4,4'-DDD	6.168	6.850	44708661	282.2E6	47.271	47.982
17) MA 4,4'-DDT	6.408	7.147	46596743	277.9E6	46.855	46.333
18) B Endrin al...	6.486	7.064	43513661	252.7E6	52.585	54.171
19) B Endosulfa...	6.698	7.287	47655161	260.5E6	44.877	45.423
20) A Methoxychlor	6.954	7.606	28327082	149.3E6	48.059	49.333
21) B Endrin ke...	7.192	7.760	63405551	325.6E6	49.735	50.109
22) Mirex	7.377	8.209	48352147	219.9E6	47.417	49.392
23) Chlordane-1	4.394f	0.000	1699506	0	44.875	N.D. #
24) Chlordane-2	0.000	5.503f	0	405.6E6	N.D.	1296.460 #
25) Chlordane-3	5.431	6.125	53568891	352.3E6	485.353	340.740 #
26) Chlordane-4	5.490	6.198	52494759	341.6E6	571.815	284.081 #
27) Chlordane-5	6.318	0.000	49380292	0	1097.614	N.D. #

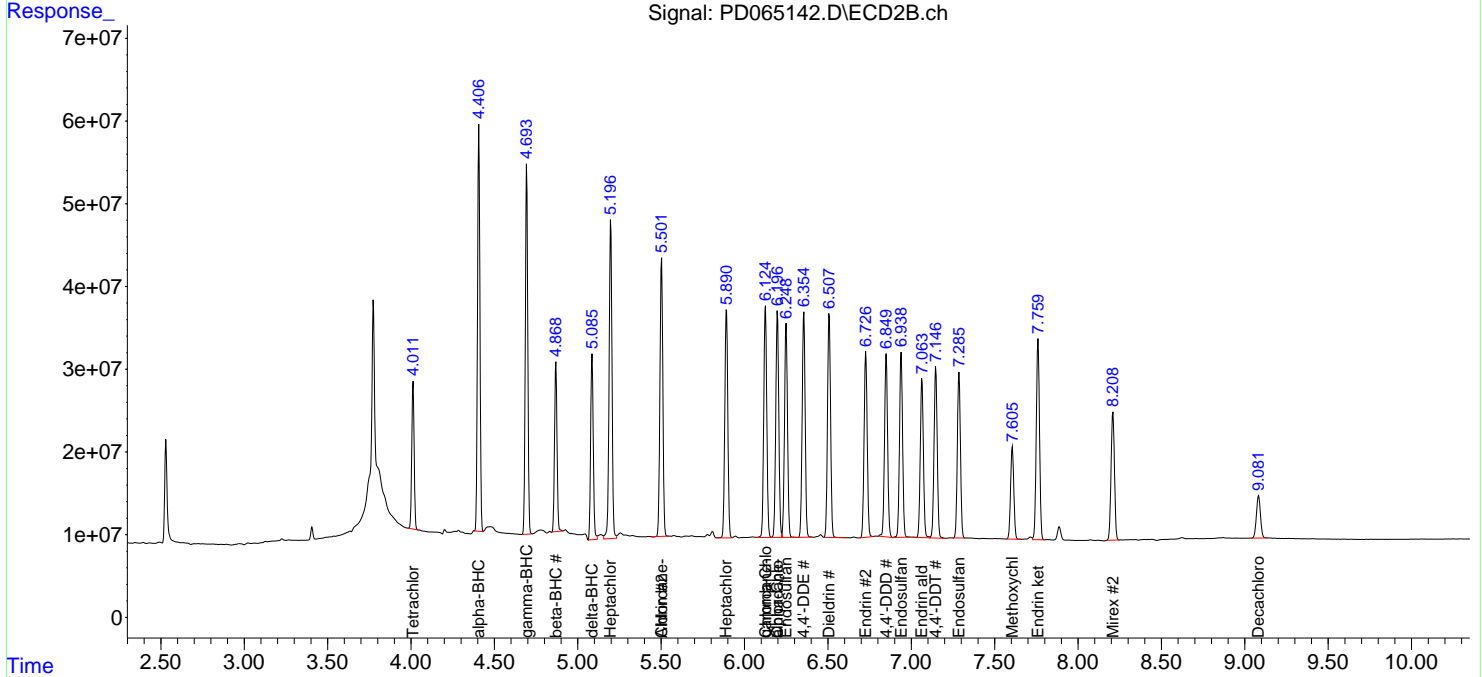
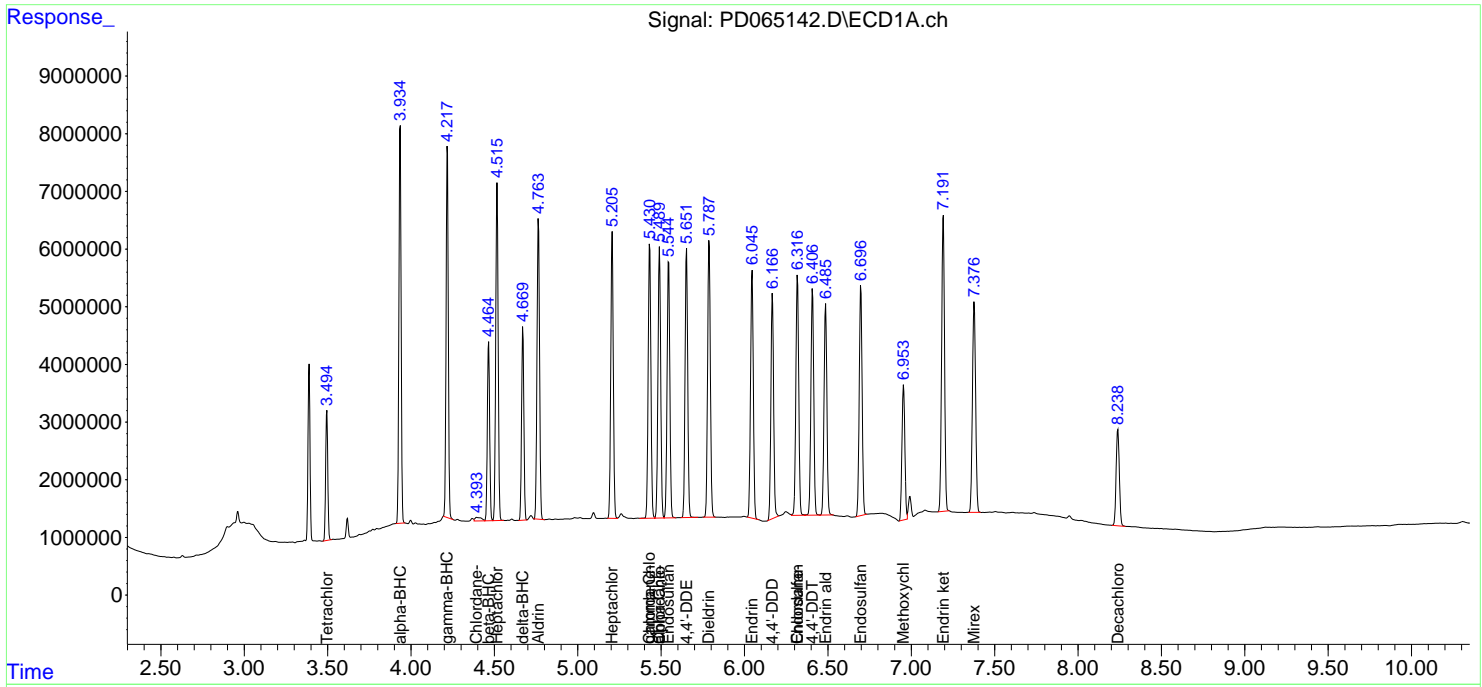
(f)=RT Delta > 1/2 Window (#)=Amounts differ by > 25% (m)=manual int.

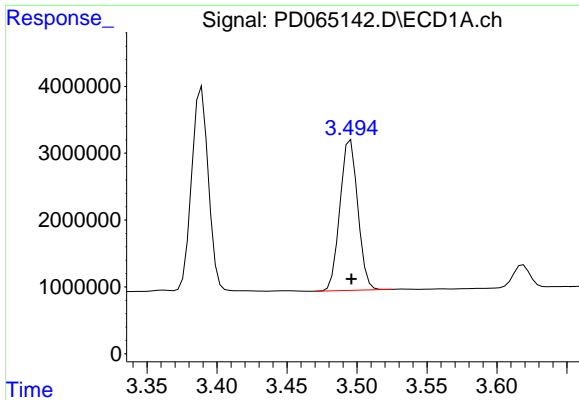
Data Path : Z:\pestpcbsrv\HPCHEM1\ECD_D\Data\PD082121\
 Data File : PD065142.D
 Signal(s) : Signal #1: ECD1A.ch Signal #2: ECD2B.ch
 Acq On : 20 Aug 2021 23:59
 Operator : AR\AJ
 Sample : M3434-07MSD
 Misc :
 ALS Vial : 37 Sample Multiplier: 1

Instrument :
 ECD_D
 ClientSampled :

Integration File signal 1: autoint1.e
 Integration File signal 2: autoint2.e
 Quant Time: Aug 21 03:51:50 2021
 Quant Method : Z:\pestpcbsrv\HPCHEM1\ECD_D\Method\PD082021.M
 Quant Title : GC Extractables
 QLast Update : Fri Aug 20 02:25:41 2021
 Response via : Initial Calibration
 Integrator: ChemStation

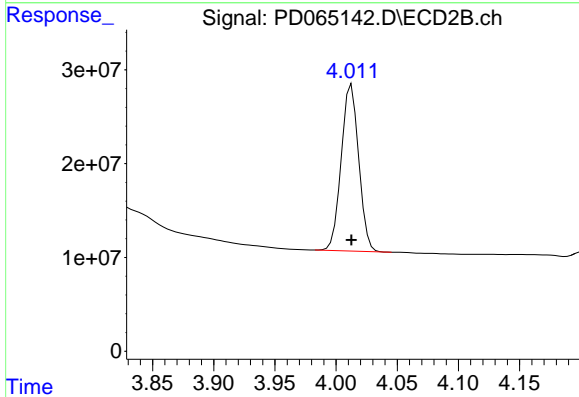
Volume Inj. : 2 µl
 Signal #1 Phase : ZB-MR2 Signal #2 Phase: ZB-MR1
 Signal #1 Info : 30M x 0.32mm x0.2 Signal #2 Info : 30M x 0.32mm x 0.50µm



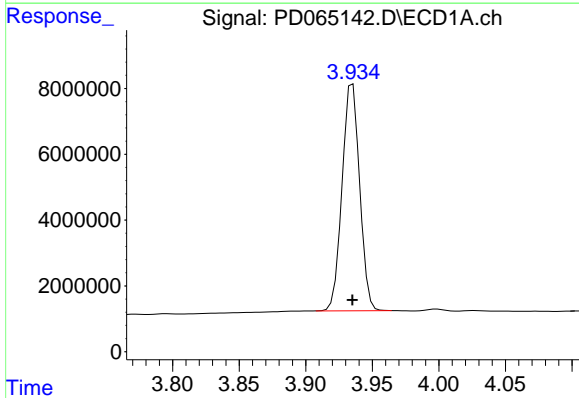


#1 Tetrachloro-m-xylene
R.T.: 3.495 min
Delta R.T.: 0.000 min
Response: 20016565
Conc: 19.47 ng/ml

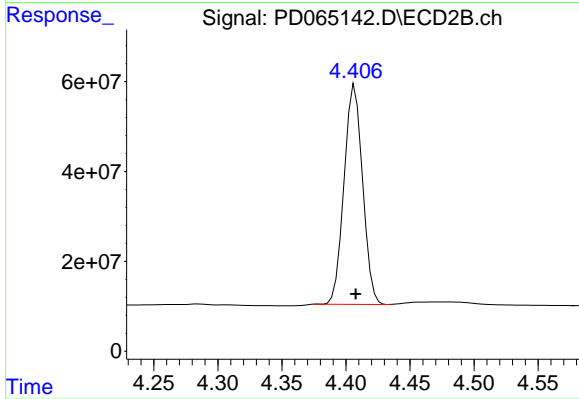
Instrument :
ECD_D
ClientSampled :



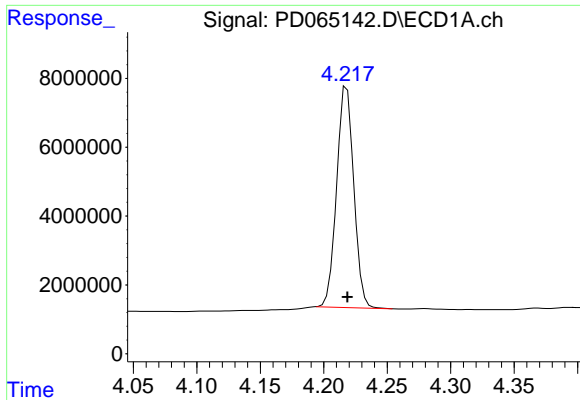
#1 Tetrachloro-m-xylene
R.T.: 4.013 min
Delta R.T.: 0.000 min
Response: 176276583
Conc: 22.26 ng/ml



#2 alpha-BHC
R.T.: 3.935 min
Delta R.T.: 0.000 min
Response: 63332762
Conc: 44.25 ng/ml

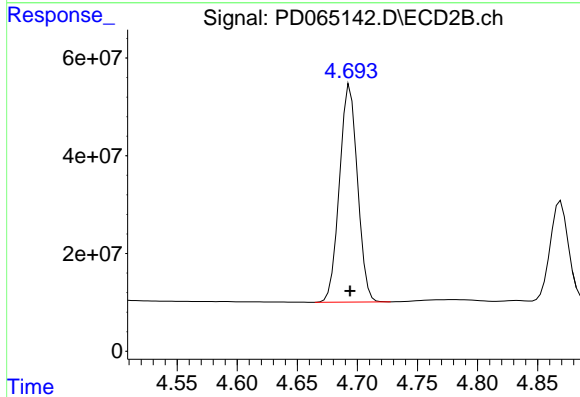


#2 alpha-BHC
R.T.: 4.407 min
Delta R.T.: 0.000 min
Response: 491844325
Conc: 42.34 ng/ml

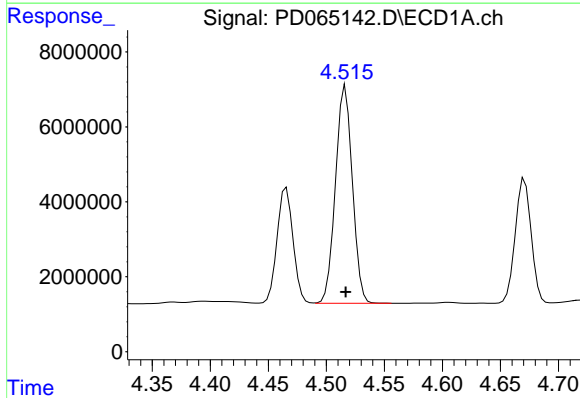


#3 gamma-BHC (Lindane)
 R.T.: 4.218 min
 Delta R.T.: 0.000 min
 Response: 60379352
 Conc: 44.01 ng/ml

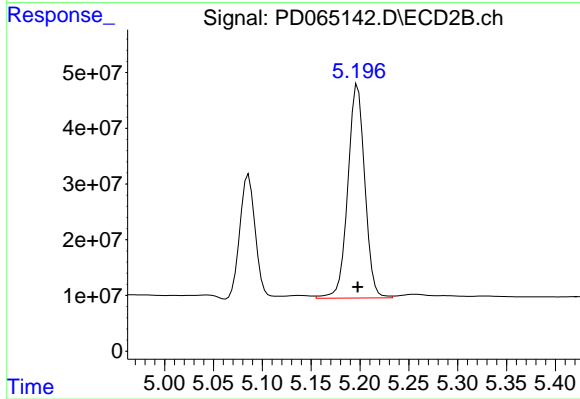
Instrument :
 ECD_D
 ClientSampled :



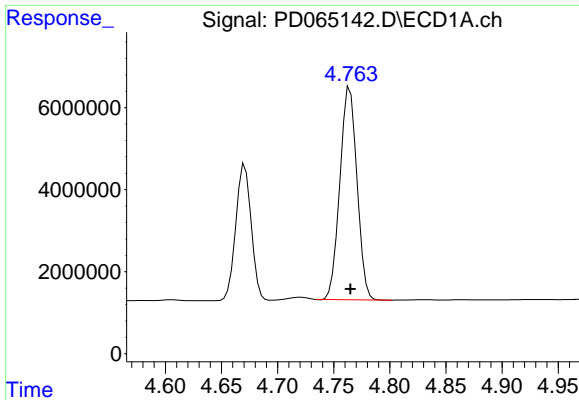
#3 gamma-BHC (Lindane)
 R.T.: 4.694 min
 Delta R.T.: 0.000 min
 Response: 465676358
 Conc: 43.96 ng/ml



#4 Heptachlor
 R.T.: 4.517 min
 Delta R.T.: 0.000 min
 Response: 58963017
 Conc: 45.27 ng/ml

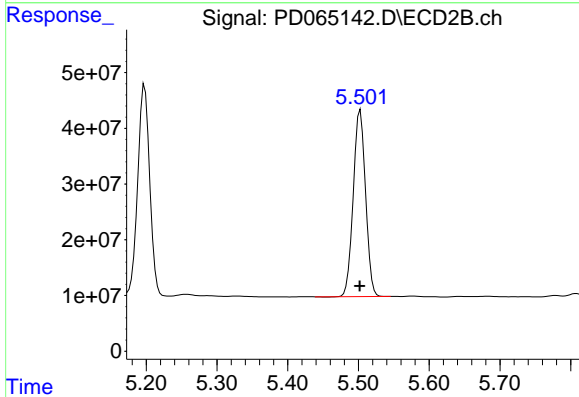


#4 Heptachlor
 R.T.: 5.198 min
 Delta R.T.: 0.000 min
 Response: 464387210
 Conc: 46.32 ng/ml

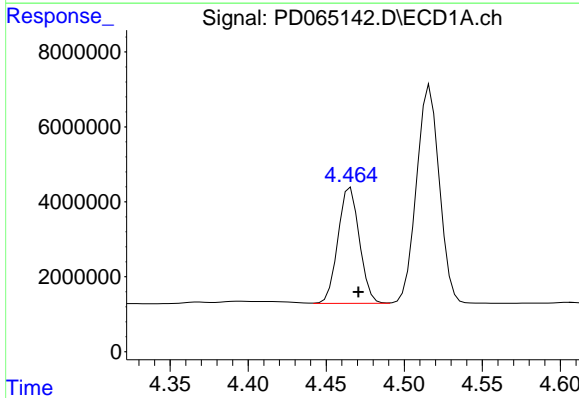


#5 Aldrin
 R.T.: 4.765 min
 Delta R.T.: 0.000 min
 Response: 55023627
 Conc: 45.88 ng/ml

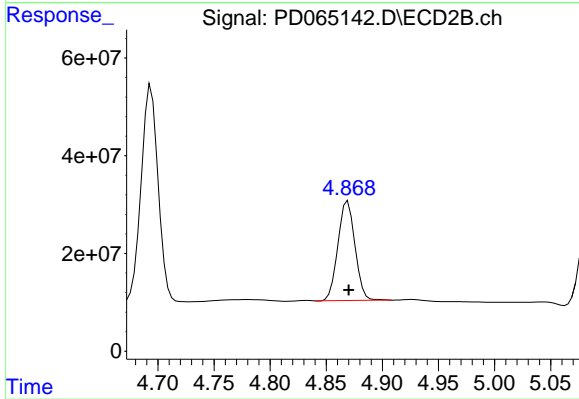
Instrument :
 ECD_D
 ClientSampled :



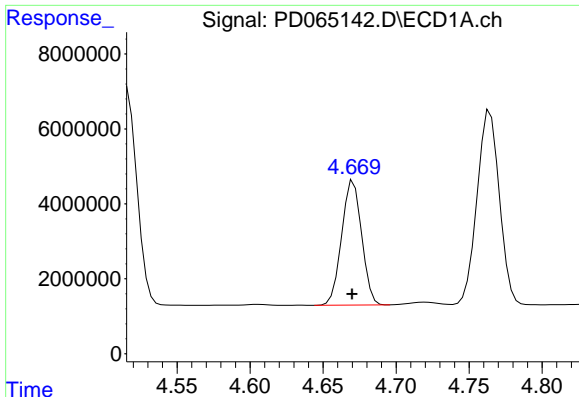
#5 Aldrin
 R.T.: 5.503 min
 Delta R.T.: 0.000 min
 Response: 405564389
 Conc: 44.90 ng/ml



#6 beta-BHC
 R.T.: 4.466 min
 Delta R.T.: -0.005 min
 Response: 29615843
 Conc: 45.04 ng/ml



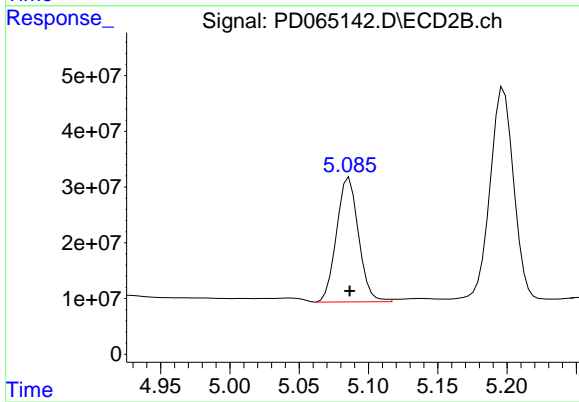
#6 beta-BHC
 R.T.: 4.869 min
 Delta R.T.: 0.000 min
 Response: 215651022
 Conc: 47.76 ng/ml



#7 delta-BHC

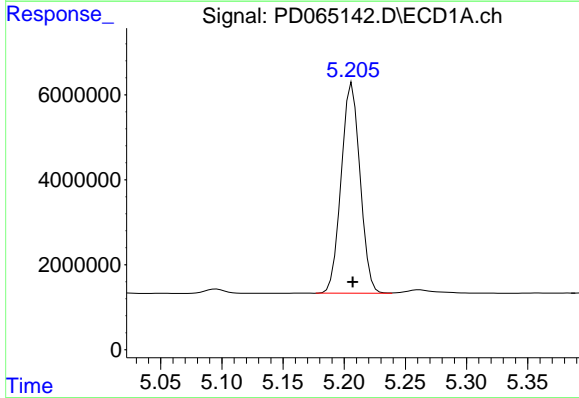
R.T.: 4.671 min
 Delta R.T.: 0.001 min
 Response: 31656414
 Conc: 23.94 ng/ml

Instrument :
 ECD_D
 ClientSampled :



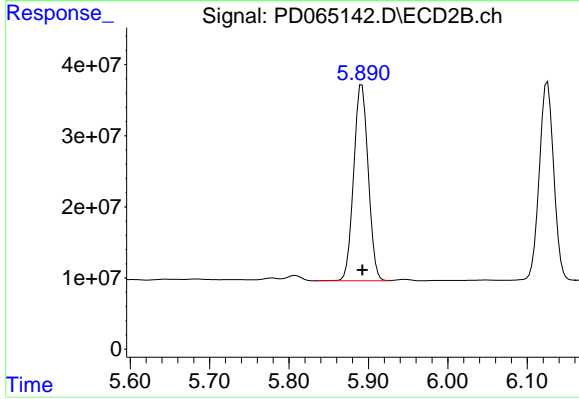
#7 delta-BHC

R.T.: 5.086 min
 Delta R.T.: 0.000 min
 Response: 246519783
 Conc: 25.38 ng/ml



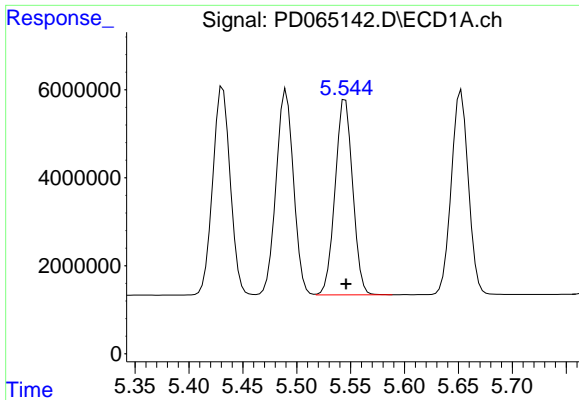
#8 Heptachlor epoxide

R.T.: 5.207 min
 Delta R.T.: 0.000 min
 Response: 53102722
 Conc: 46.73 ng/ml



#8 Heptachlor epoxide

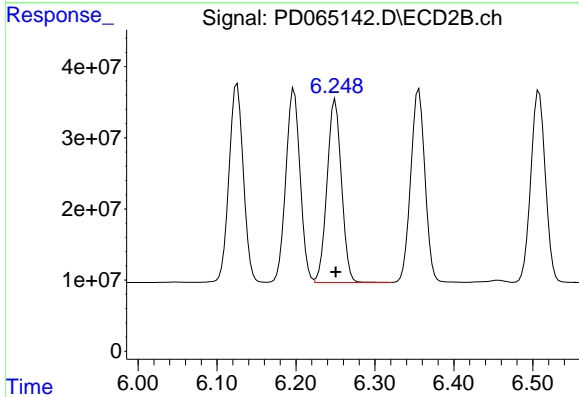
R.T.: 5.892 min
 Delta R.T.: 0.000 min
 Response: 350428507
 Conc: 46.97 ng/ml



#9 Endosulfan I

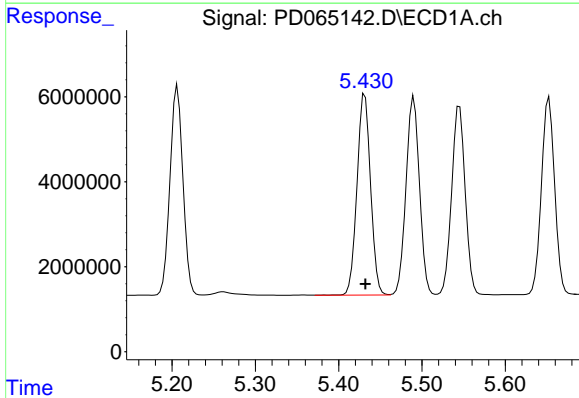
R.T.: 5.545 min
 Delta R.T.: 0.000 min
 Response: 50367571
 Conc: 47.22 ng/ml

Instrument :
 ECD_D
 ClientSampled :



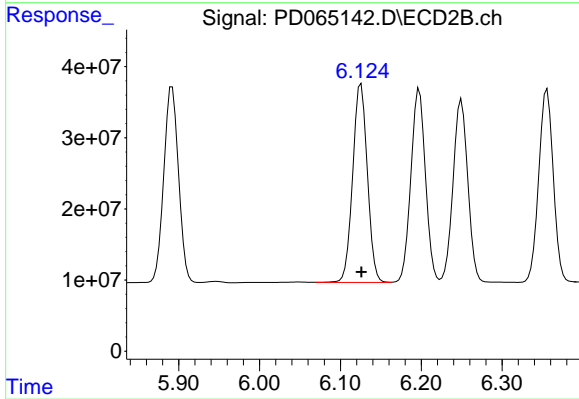
#9 Endosulfan I

R.T.: 6.250 min
 Delta R.T.: 0.000 min
 Response: 326923464
 Conc: 46.42 ng/ml



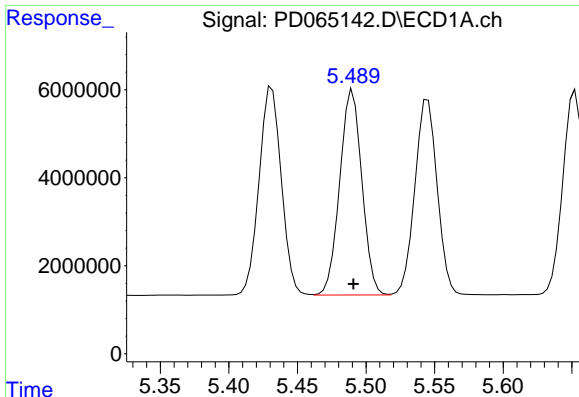
#10 gamma-Chlordane

R.T.: 5.431 min
 Delta R.T.: 0.000 min
 Response: 53568891
 Conc: 47.38 ng/ml



#10 gamma-Chlordane

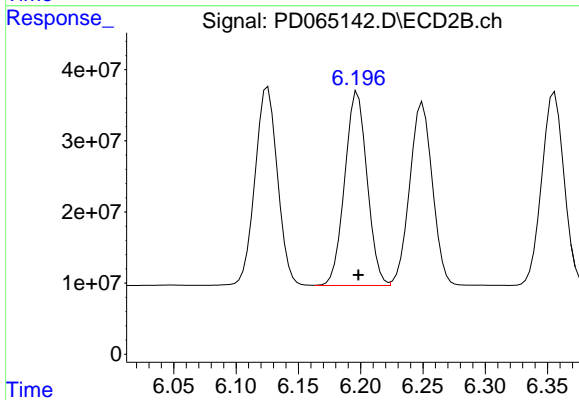
R.T.: 6.125 min
 Delta R.T.: 0.000 min
 Response: 352275160
 Conc: 46.07 ng/ml



#11 alpha-Chlordane

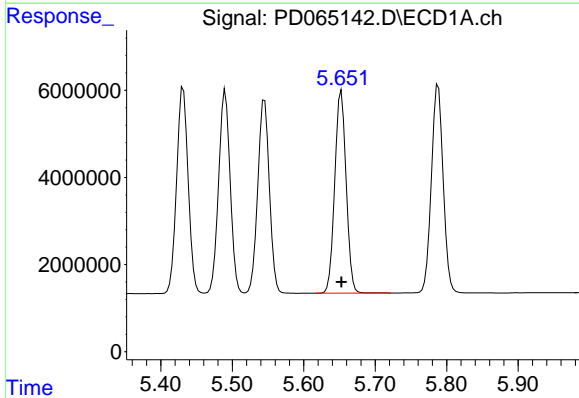
R.T.: 5.490 min
 Delta R.T.: 0.000 min
 Response: 52494759
 Conc: 46.88 ng/ml

Instrument :
 ECD_D
 ClientSampled :



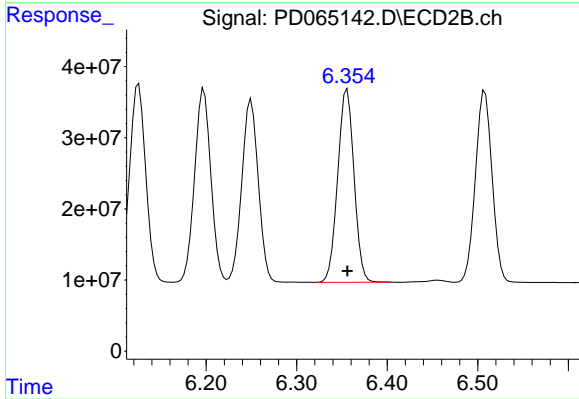
#11 alpha-Chlordane

R.T.: 6.198 min
 Delta R.T.: 0.000 min
 Response: 341555931
 Conc: 45.88 ng/ml



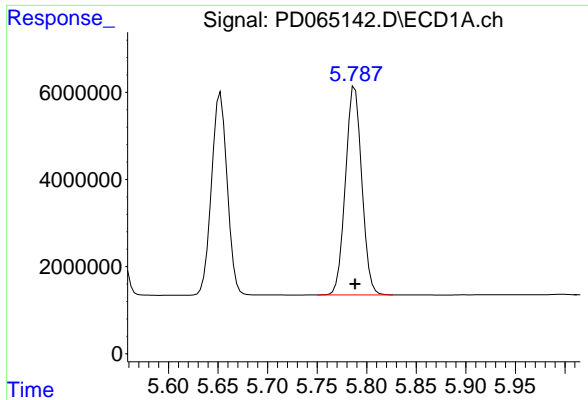
#12 4,4'-DDE

R.T.: 5.653 min
 Delta R.T.: 0.000 min
 Response: 51176626
 Conc: 48.56 ng/ml



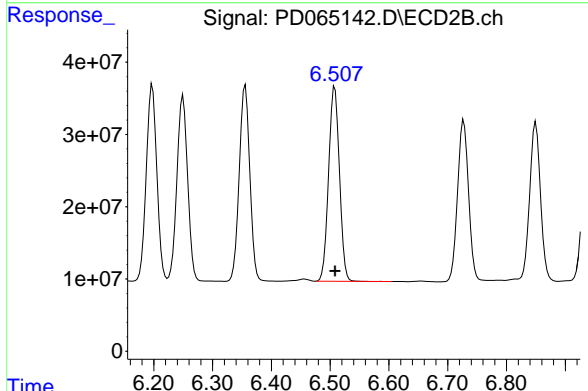
#12 4,4'-DDE

R.T.: 6.356 min
 Delta R.T.: 0.000 min
 Response: 339499217
 Conc: 47.28 ng/ml

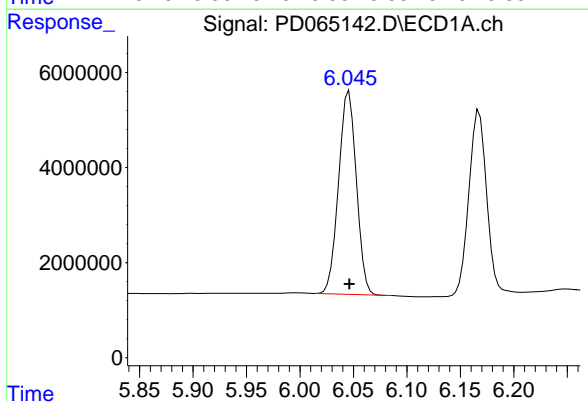


#13 Dieldrin
 R.T.: 5.788 min
 Delta R.T.: 0.000 min
 Response: 54864368
 Conc: 48.89 ng/ml

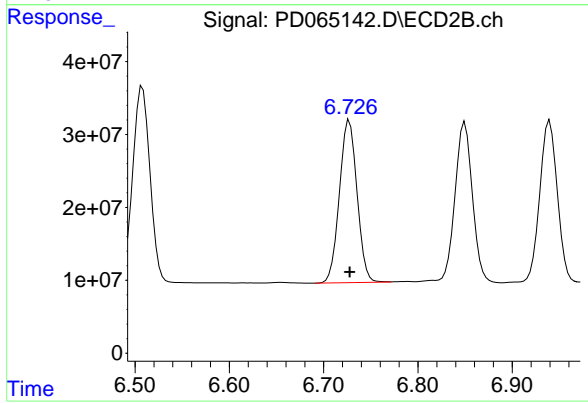
Instrument :
 ECD_D
 ClientSampled :



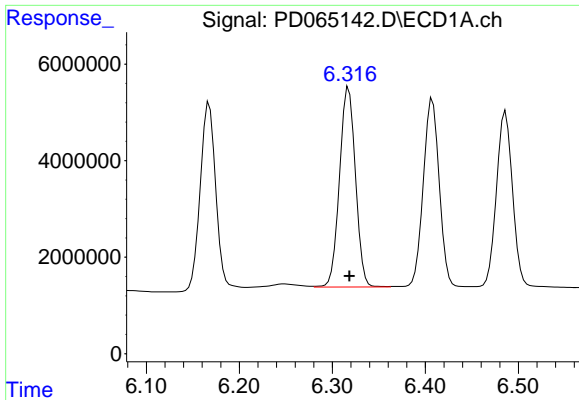
#13 Dieldrin
 R.T.: 6.508 min
 Delta R.T.: 0.000 min
 Response: 345881510
 Conc: 47.67 ng/ml



#14 Endrin
 R.T.: 6.046 min
 Delta R.T.: 0.000 min
 Response: 49486606
 Conc: 47.16 ng/ml



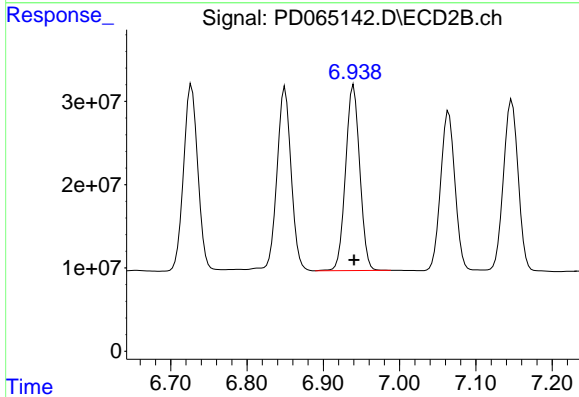
#14 Endrin
 R.T.: 6.727 min
 Delta R.T.: 0.000 min
 Response: 289252104
 Conc: 47.00 ng/ml



#15 Endosulfan II

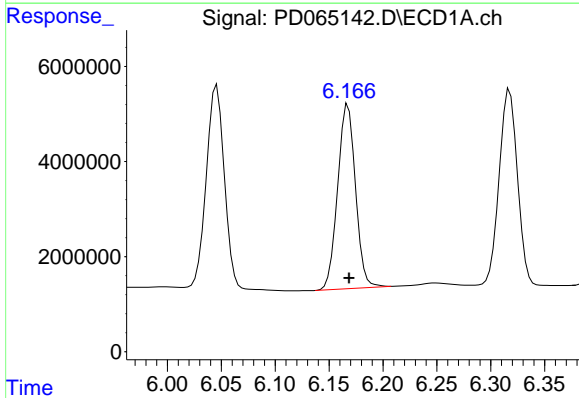
R.T.: 6.318 min
 Delta R.T.: 0.000 min
 Response: 49380292
 Conc: 49.39 ng/ml

Instrument :
 ECD_D
 ClientSampled :



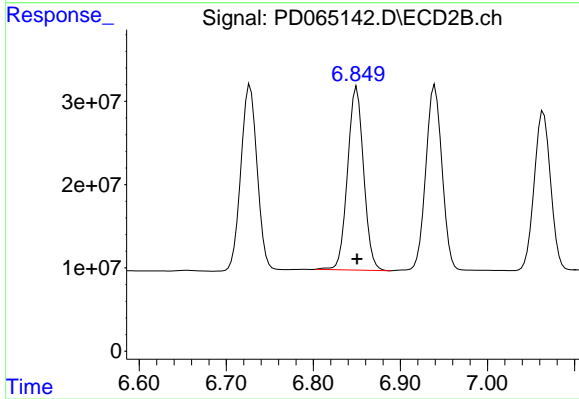
#15 Endosulfan II

R.T.: 6.940 min
 Delta R.T.: 0.000 min
 Response: 288294554
 Conc: 49.16 ng/ml



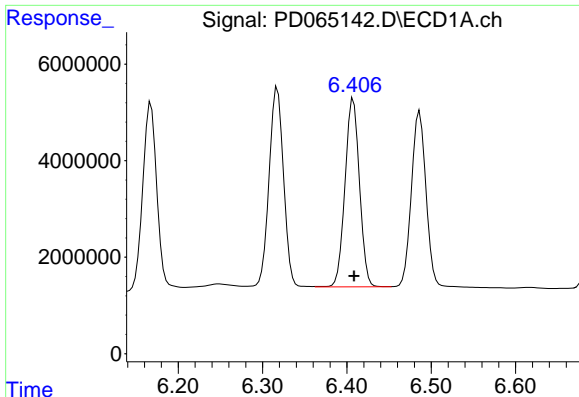
#16 4,4'-DDD

R.T.: 6.168 min
 Delta R.T.: -0.001 min
 Response: 44708661
 Conc: 47.27 ng/ml



#16 4,4'-DDD

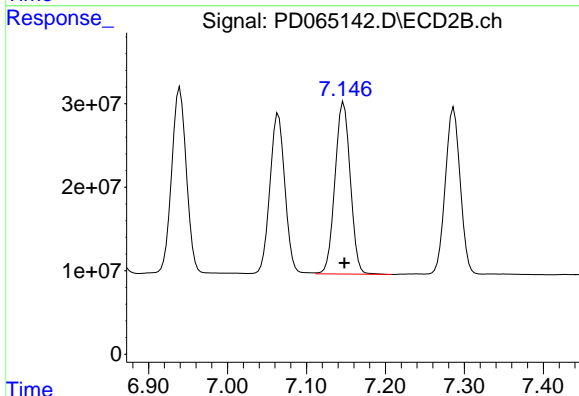
R.T.: 6.850 min
 Delta R.T.: 0.000 min
 Response: 282154562
 Conc: 47.98 ng/ml



#17 4,4'-DDT

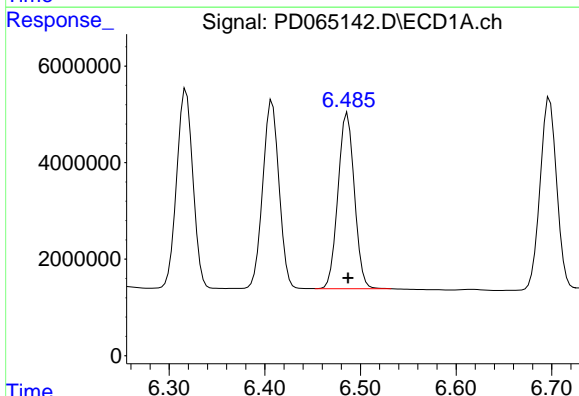
R.T.: 6.408 min
 Delta R.T.: -0.001 min
 Response: 46596743
 Conc: 46.85 ng/ml

Instrument :
 ECD_D
 ClientSampled :



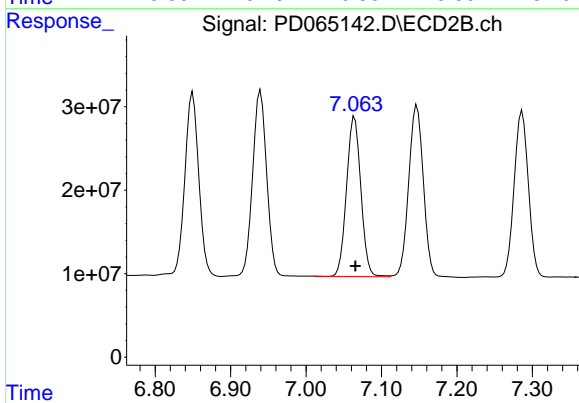
#17 4,4'-DDT

R.T.: 7.147 min
 Delta R.T.: -0.001 min
 Response: 277855401
 Conc: 46.33 ng/ml



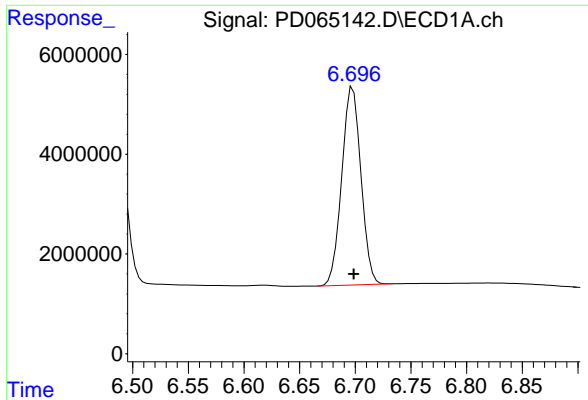
#18 Endrin aldehyde

R.T.: 6.486 min
 Delta R.T.: 0.000 min
 Response: 43513661
 Conc: 52.58 ng/ml



#18 Endrin aldehyde

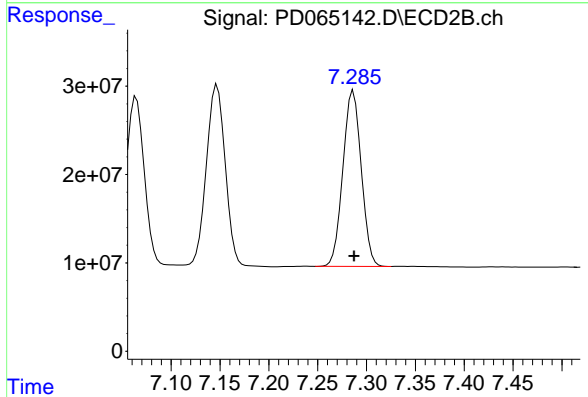
R.T.: 7.064 min
 Delta R.T.: 0.000 min
 Response: 252673656
 Conc: 54.17 ng/ml



#19 Endosulfan Sulfate

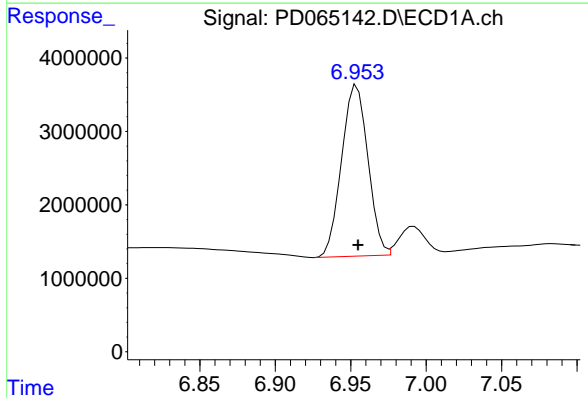
R.T.: 6.698 min
 Delta R.T.: 0.000 min
 Response: 47655161
 Conc: 44.88 ng/ml

Instrument :
 ECD_D
 ClientSampled :



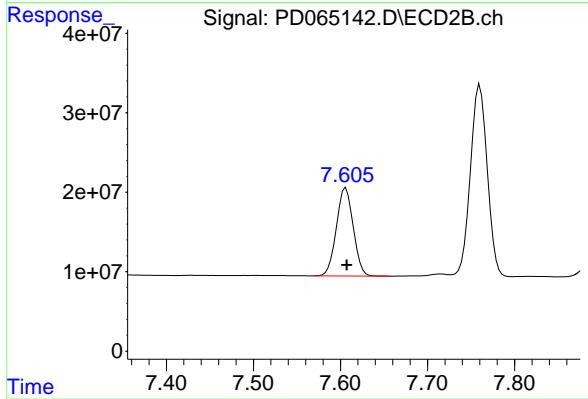
#19 Endosulfan Sulfate

R.T.: 7.287 min
 Delta R.T.: 0.000 min
 Response: 260480939
 Conc: 45.42 ng/ml



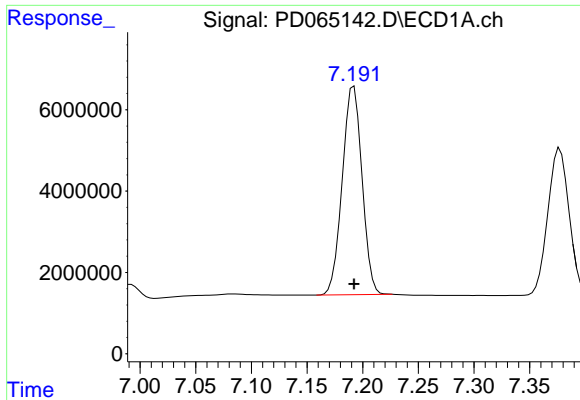
#20 Methoxychlor

R.T.: 6.954 min
 Delta R.T.: 0.000 min
 Response: 28327082
 Conc: 48.06 ng/ml



#20 Methoxychlor

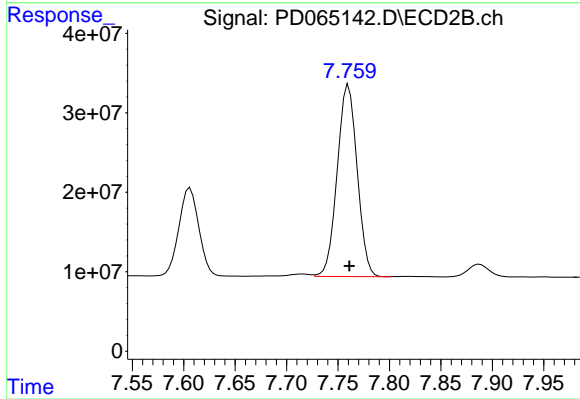
R.T.: 7.606 min
 Delta R.T.: -0.001 min
 Response: 149287817
 Conc: 49.33 ng/ml



#21 Endrin ketone

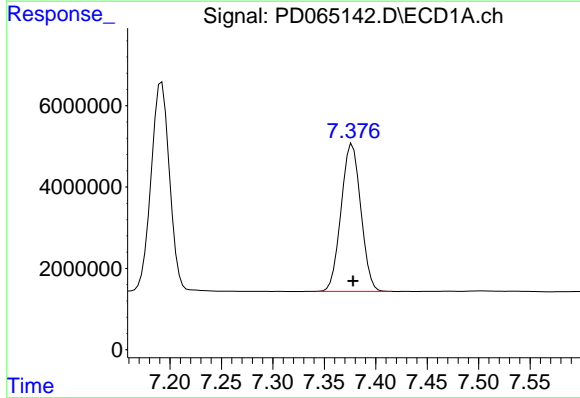
R.T.: 7.192 min
 Delta R.T.: 0.000 min
 Response: 63405551
 Conc: 49.73 ng/ml

Instrument :
 ECD_D
 ClientSampled :



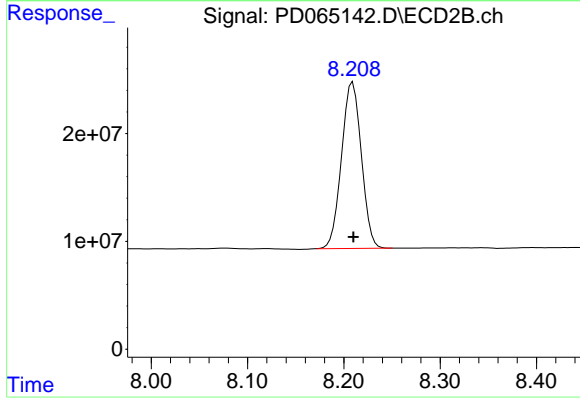
#21 Endrin ketone

R.T.: 7.760 min
 Delta R.T.: 0.000 min
 Response: 325643780
 Conc: 50.11 ng/ml



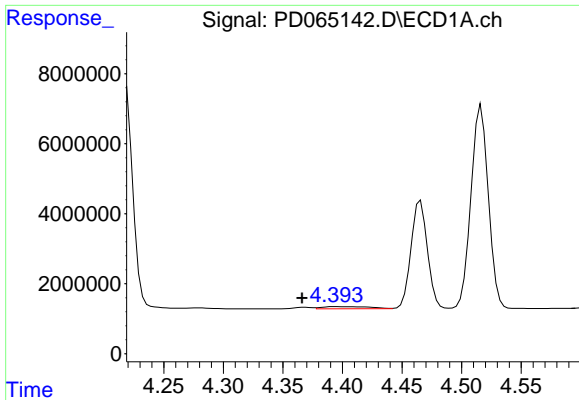
#22 Mirex

R.T.: 7.377 min
 Delta R.T.: 0.000 min
 Response: 48352147
 Conc: 47.42 ng/ml



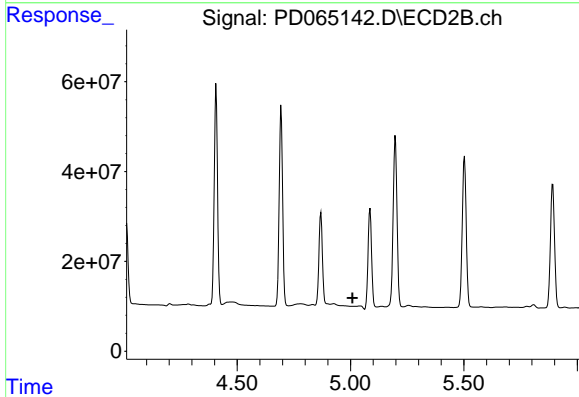
#22 Mirex

R.T.: 8.209 min
 Delta R.T.: 0.000 min
 Response: 219908698
 Conc: 49.39 ng/ml

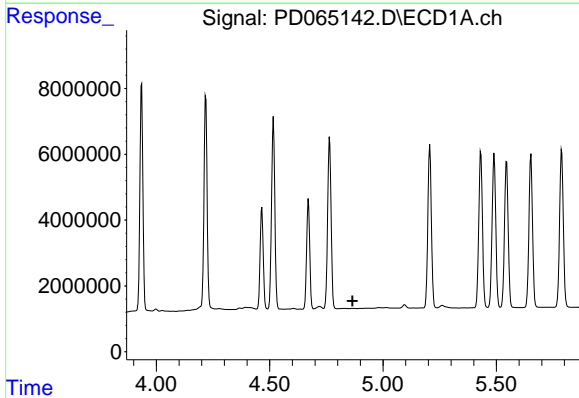


#23 Chlordane-1
 R.T.: 4.394 min
 Delta R.T.: 0.028 min
 Response: 1699506
 Conc: 44.88 ng/ml

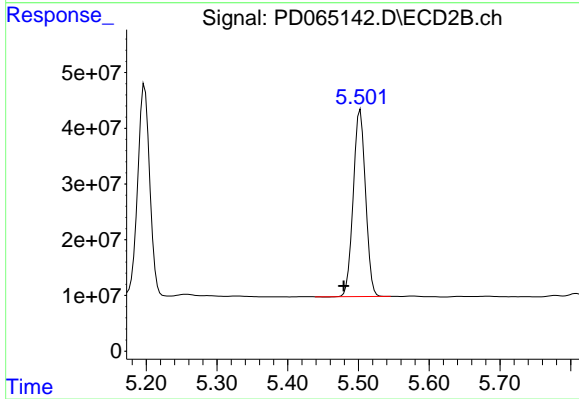
Instrument :
 ECD_D
 ClientSampled :



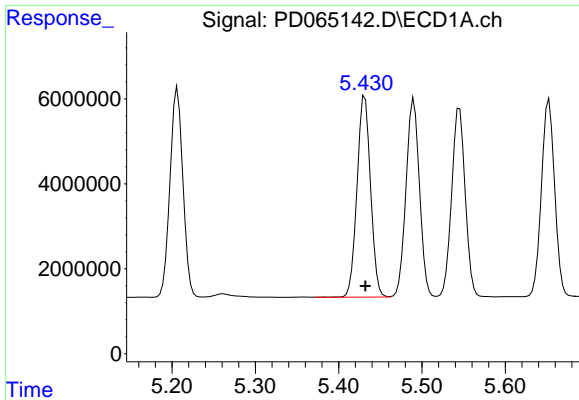
#23 Chlordane-1
 R.T.: 0.000 min
 Exp R.T. : 5.009 min
 Response: 0
 Conc: N.D.



#24 Chlordane-2
 R.T.: 0.000 min
 Exp R.T. : 4.866 min
 Response: 0
 Conc: N.D.

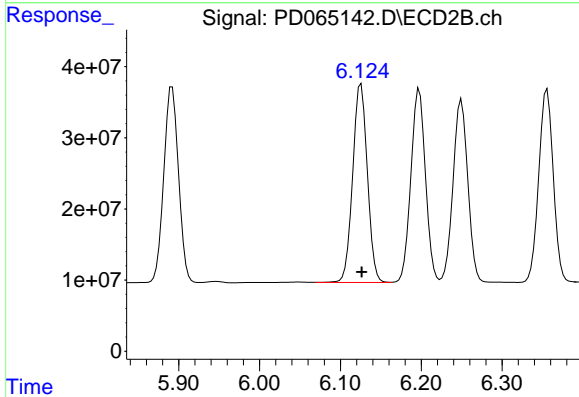


#24 Chlordane-2
 R.T.: 5.503 min
 Delta R.T.: 0.024 min
 Response: 405564389
 Conc: 1296.46 ng/ml

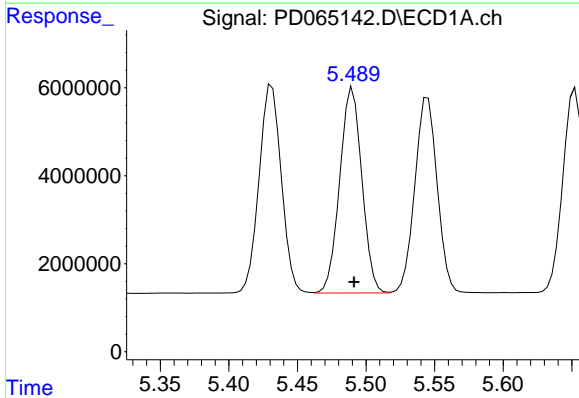


#25 Chlordane-3
 R.T.: 5.431 min
 Delta R.T.: 0.000 min
 Response: 53568891
 Conc: 485.35 ng/ml

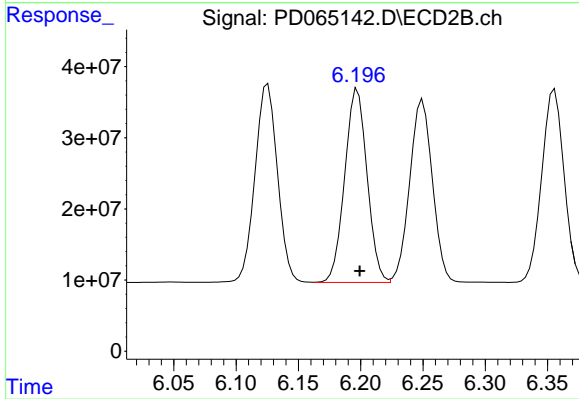
Instrument :
 ECD_D
 ClientSampled :



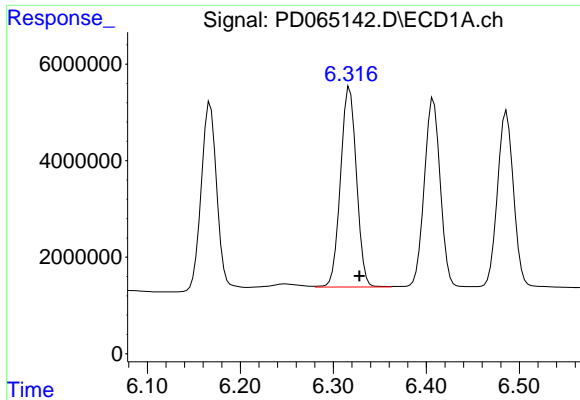
#25 Chlordane-3
 R.T.: 6.125 min
 Delta R.T.: 0.000 min
 Response: 352275160
 Conc: 340.74 ng/ml



#26 Chlordane-4
 R.T.: 5.490 min
 Delta R.T.: 0.000 min
 Response: 52494759
 Conc: 571.82 ng/ml

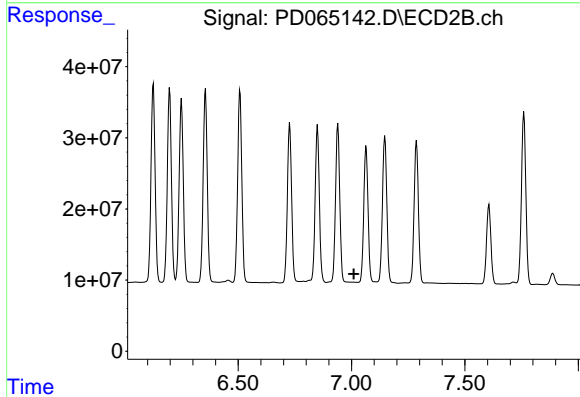


#26 Chlordane-4
 R.T.: 6.198 min
 Delta R.T.: -0.002 min
 Response: 341555931
 Conc: 284.08 ng/ml

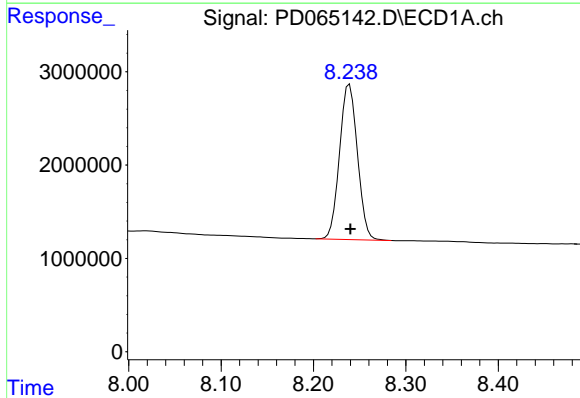


#27 Chlordane-5
 R.T.: 6.318 min
 Delta R.T.: -0.010 min
 Response: 49380292
 Conc: 1097.61 ng/ml

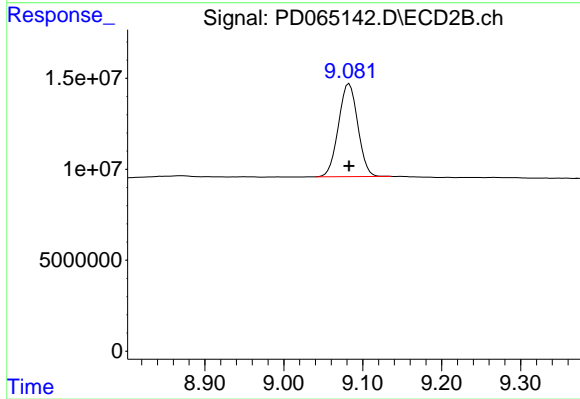
Instrument :
 ECD_D
 ClientSampled :



#27 Chlordane-5
 R.T.: 0.000 min
 Exp R.T. : 7.010 min
 Response: 0
 Conc: N.D.



#28 Decachlorobiphenyl
 R.T.: 8.239 min
 Delta R.T.: -0.001 min
 Response: 22420431
 Conc: 19.79 ng/ml



#28 Decachlorobiphenyl
 R.T.: 9.083 min
 Delta R.T.: 0.000 min
 Response: 87116830
 Conc: 18.41 ng/ml