

Data Path : Z:\pestpcbsrv\HPCHEM1\ECD\_D\Data\PD082121\  
 Data File : PD065154.D  
 Signal(s) : Signal #1: ECD1A.ch Signal #2: ECD2B.ch  
 Acq On : 21 Aug 2021 03:12  
 Operator : AR\AJ  
 Sample : M3434-29  
 Misc :  
 ALS Vial : 45 Sample Multiplier: 1

Instrument :  
 ECD\_D  
 ClientSampleId :

Integration File signal 1: autoint1.e  
 Integration File signal 2: autoint2.e  
 Quant Time: Aug 21 05:36:05 2021  
 Quant Method : Z:\pestpcbsrv\HPCHEM1\ECD\_D\Method\PD082021.M  
 Quant Title : GC Extractables  
 QLast Update : Fri Aug 20 02:25:41 2021  
 Response via : Initial Calibration  
 Integrator: ChemStation

Volume Inj. : 2 µl  
 Signal #1 Phase : ZB-MR2 Signal #2 Phase: ZB-MR1  
 Signal #1 Info : 30M x 0.32mm x0.2 Signal #2 Info : 30M x 0.32mm x 0.50µm

	Compound	RT#1	RT#2	Resp#1	Resp#2	ng/ml	ng/ml
-----							
System Monitoring Compounds							
1)	SA Tetrachlo...	3.495	4.013	16890534	131.7E6	16.432	16.623
28)	SA Decachlor...	8.240	9.083	11132161	46452559	9.825	9.816
Target Compounds							
3)	MA gamma-BHC...	4.225	4.679f	1983430	8619359	1.446	0.814 #
4)	MA Heptachlor	0.000	5.219f	0	13675542	N.D.	1.364 #
5)	MB Aldrin	0.000	5.528f	0	2395914	N.D.	0.265 #
7)	B delta-BHC	0.000	5.114f	0	23986758	N.D.	2.470 #
8)	B Heptachlo...	0.000	5.880	0	20647181	N.D.	2.768 #
9)	A Endosulfan I	5.571f	0.000	2680712	0	2.513	N.D. #
10)	B gamma-Chl...	5.432	6.124	1323417	49341227	1.170	6.453 #
11)	B alpha-Chl...	5.488	6.198	2919805	25115329	2.608	3.374 #
12)	B 4,4'-DDE	0.000	6.356	0	27800008	N.D.	3.871 #
13)	MA Dieldrin	5.784	0.000	6176545	0	5.504	N.D. #
14)	MA Endrin	6.041	6.718	953656	4065119	0.909	0.660 #
15)	B Endosulfa...	6.319	6.931	985043	3758085	0.985	0.641 #
16)	A 4,4'-DDD	6.169	6.850	3118589	38869273	3.297	6.610 #
17)	MA 4,4'-DDT	6.405	7.147	4522448	13115374	4.547	2.187 #
18)	B Endrin al...	0.000	7.060	0	5267511	N.D.	1.129 #
19)	B Endosulfa...	6.693	0.000	341945	0	0.322	N.D. #
20)	A Methoxychlor	6.933f	0.000	1125335	0	1.909	N.D. #
21)	B Endrin ke...	7.212f	0.000	747572	0	0.586	N.D. #
22)	Mirex	0.000	8.226f	0	3821220	N.D.	0.858 #
23)	Chlordane-1	4.367	0.000	963146	0	25.432	N.D. #
24)	Chlordane-2	4.867	5.474	1607053	7066065	36.822	22.588 #
25)	Chlordane-3	5.432	6.124	1323417	49341227	11.991	47.726 #
26)	Chlordane-4	5.488	6.198	2919805	25115329	31.805	20.889 #
27)	Chlordane-5	6.319	7.028f	985043	2201189	21.895	9.284 #

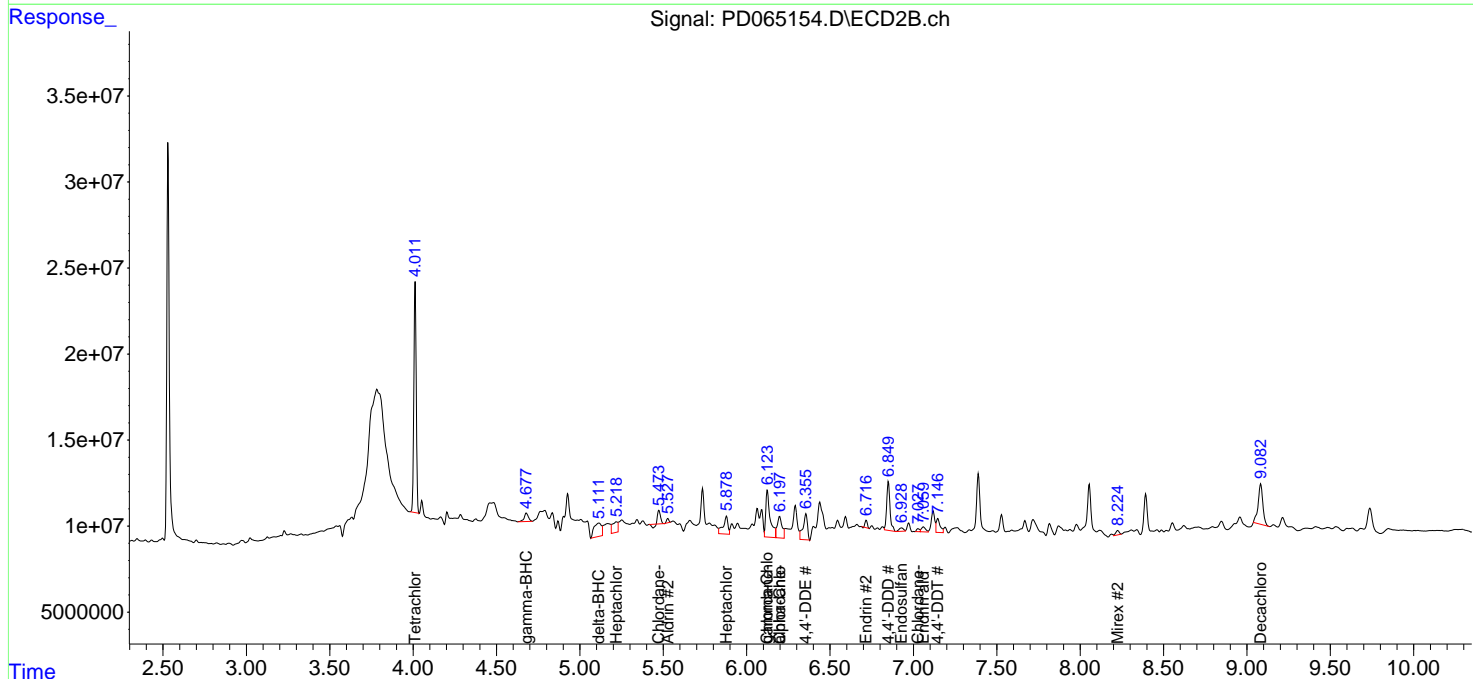
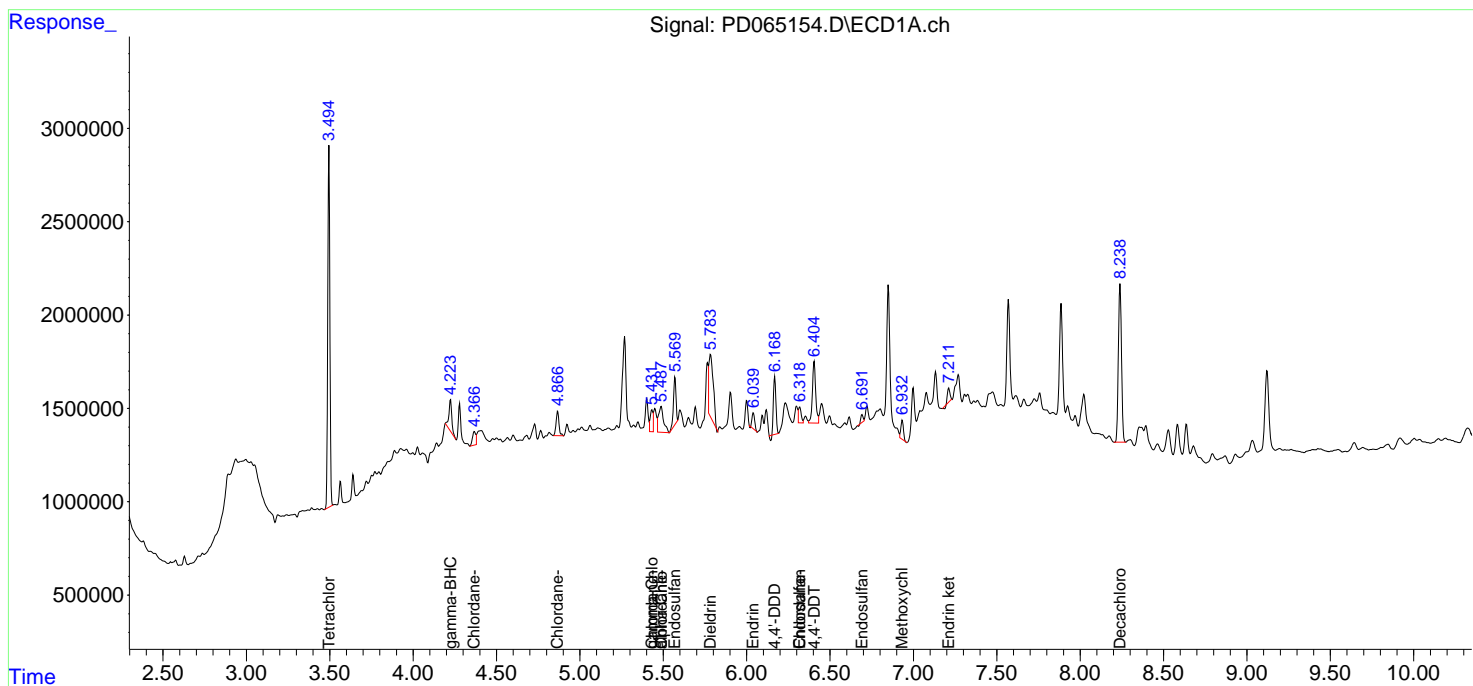
(f)=RT Delta > 1/2 Window (#)=Amounts differ by > 25% (m)=manual int.

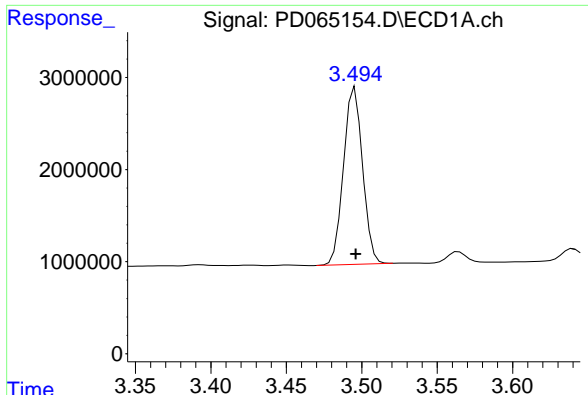
Data Path : Z:\pestpcbsrv\HPCHEM1\ECD\_D\Data\PD082121\  
 Data File : PD065154.D  
 Signal(s) : Signal #1: ECD1A.ch Signal #2: ECD2B.ch  
 Acq On : 21 Aug 2021 03:12  
 Operator : AR\AJ  
 Sample : M3434-29  
 Misc :  
 ALS Vial : 45 Sample Multiplier: 1

Instrument :  
 ECD\_D  
 ClientSampled :

Integration File signal 1: autoint1.e  
 Integration File signal 2: autoint2.e  
 Quant Time: Aug 21 05:36:05 2021  
 Quant Method : Z:\pestpcbsrv\HPCHEM1\ECD\_D\Method\PD082021.M  
 Quant Title : GC Extractables  
 QLast Update : Fri Aug 20 02:25:41 2021  
 Response via : Initial Calibration  
 Integrator: ChemStation

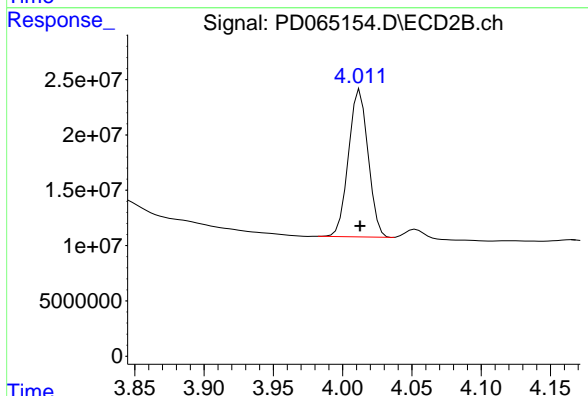
Volume Inj. : 2 µl  
 Signal #1 Phase : ZB-MR2 Signal #2 Phase: ZB-MR1  
 Signal #1 Info : 30M x 0.32mm x0.2 Signal #2 Info : 30M x 0.32mm x 0.50µm



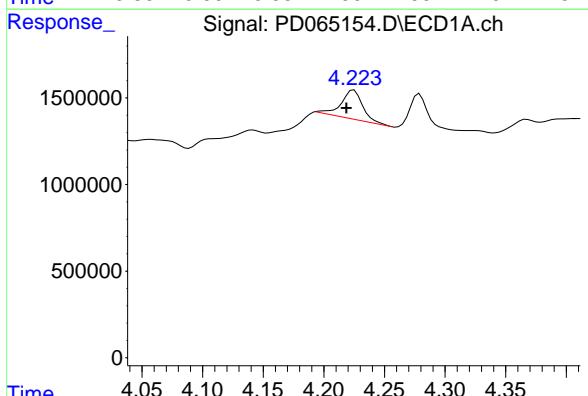


#1 Tetrachloro-m-xylene  
 R.T.: 3.495 min  
 Delta R.T.: 0.000 min  
 Response: 16890534  
 Conc: 16.43 ng/ml

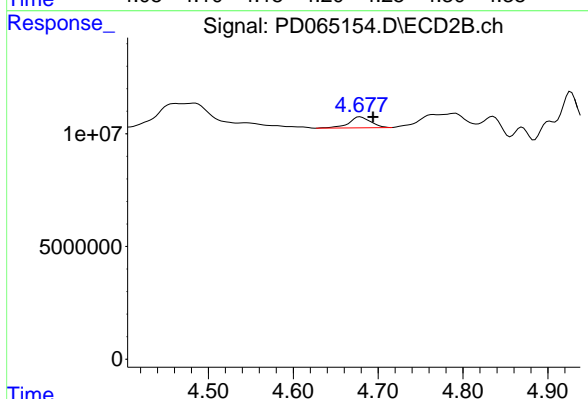
Instrument :  
 ECD\_D  
 ClientSampled :



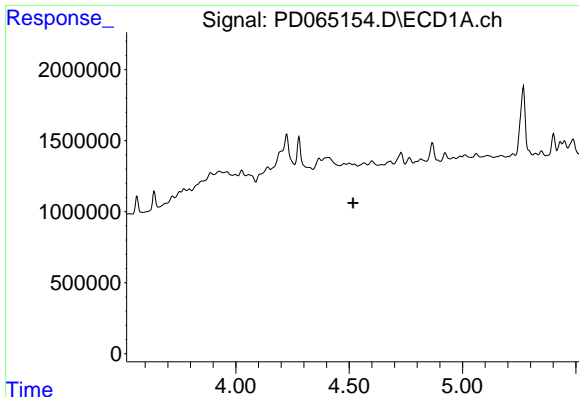
#1 Tetrachloro-m-xylene  
 R.T.: 4.013 min  
 Delta R.T.: 0.000 min  
 Response: 131662924  
 Conc: 16.62 ng/ml



#3 gamma-BHC (Lindane)  
 R.T.: 4.225 min  
 Delta R.T.: 0.006 min  
 Response: 1983430  
 Conc: 1.45 ng/ml



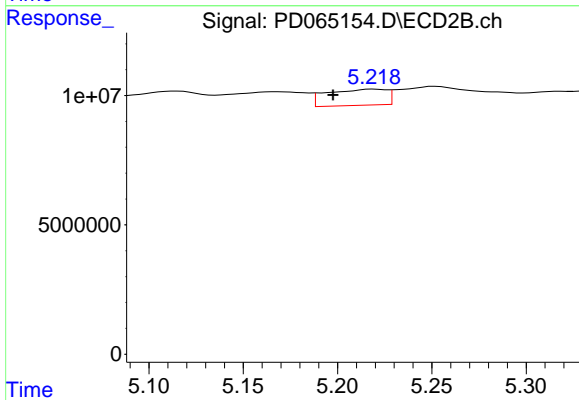
#3 gamma-BHC (Lindane)  
 R.T.: 4.679 min  
 Delta R.T.: -0.015 min  
 Response: 8619359  
 Conc: 0.81 ng/ml



#4 Heptachlor

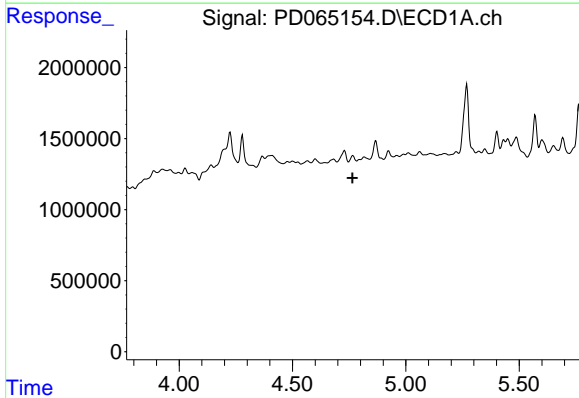
R.T.: 0.000 min  
 Exp R.T. : 4.517 min  
 Response: 0  
 Conc: N.D.

Instrument :  
 ECD\_D  
 ClientSampleId :



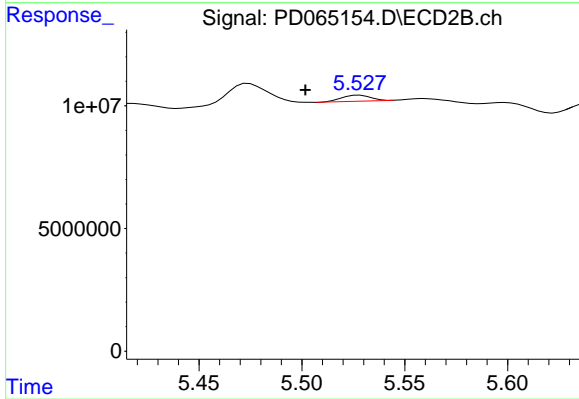
#4 Heptachlor

R.T.: 5.219 min  
 Delta R.T.: 0.022 min  
 Response: 13675542  
 Conc: 1.36 ng/ml



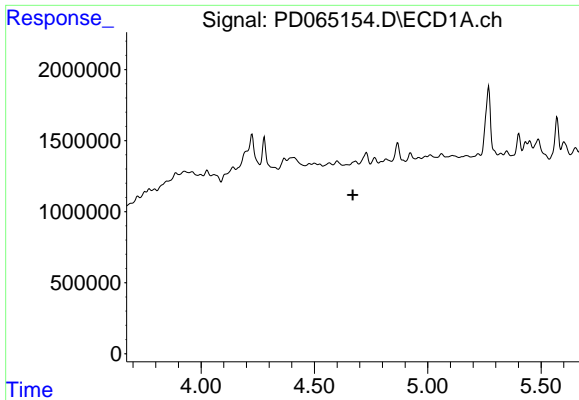
#5 Aldrin

R.T.: 0.000 min  
 Exp R.T. : 4.765 min  
 Response: 0  
 Conc: N.D.



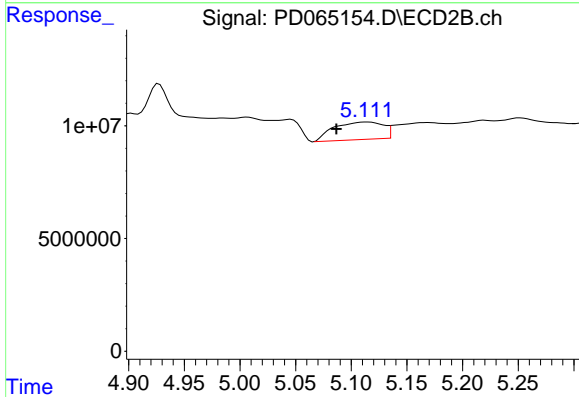
#5 Aldrin

R.T.: 5.528 min  
 Delta R.T.: 0.026 min  
 Response: 2395914  
 Conc: 0.27 ng/ml

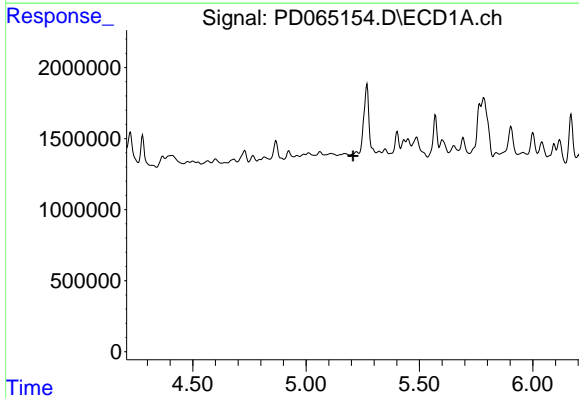


#7 delta-BHC  
 R.T.: 0.000 min  
 Exp R.T.: 4.670 min  
 Response: 0  
 Conc: N.D.

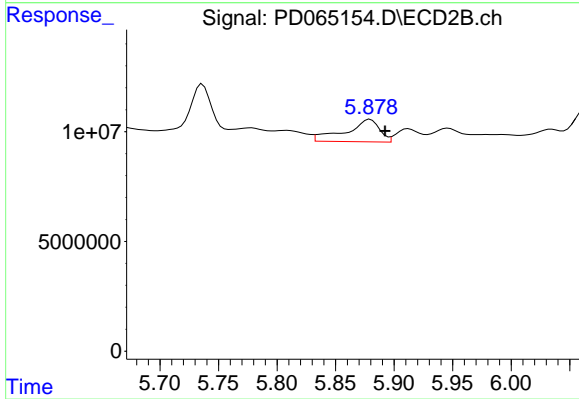
Instrument :  
 ECD\_D  
 ClientSampleId :



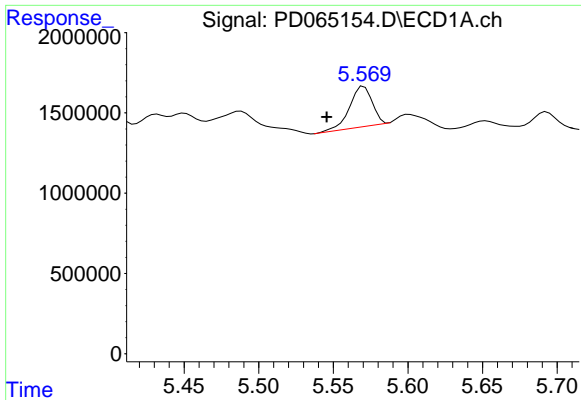
#7 delta-BHC  
 R.T.: 5.114 min  
 Delta R.T.: 0.027 min  
 Response: 23986758  
 Conc: 2.47 ng/ml



#8 Heptachlor epoxide  
 R.T.: 0.000 min  
 Exp R.T.: 5.207 min  
 Response: 0  
 Conc: N.D.

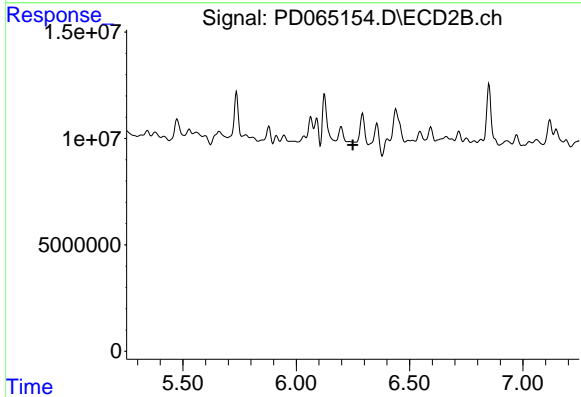


#8 Heptachlor epoxide  
 R.T.: 5.880 min  
 Delta R.T.: -0.013 min  
 Response: 20647181  
 Conc: 2.77 ng/ml

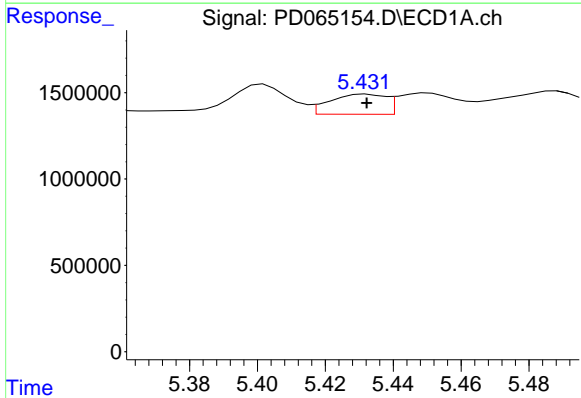


#9 Endosulfan I  
 R.T.: 5.571 min  
 Delta R.T.: 0.025 min  
 Response: 2680712  
 Conc: 2.51 ng/ml

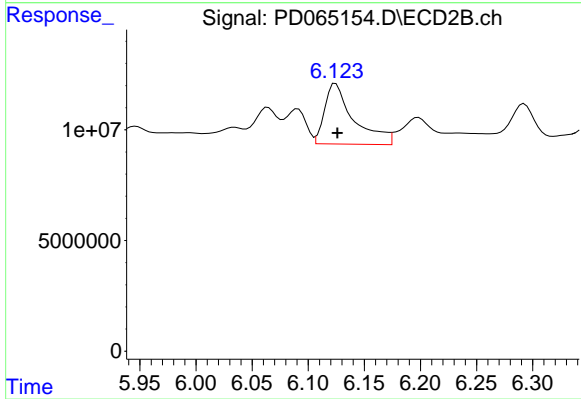
Instrument :  
 ECD\_D  
 ClientSampleId :



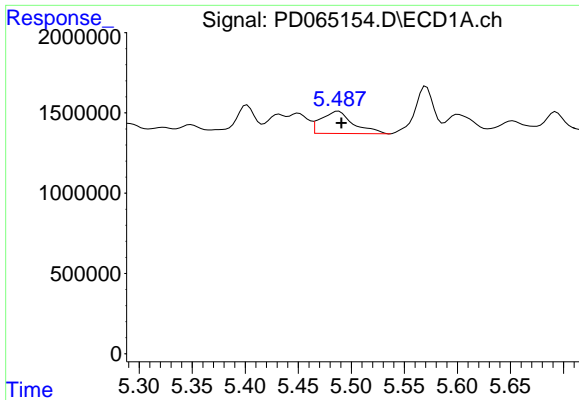
#9 Endosulfan I  
 R.T.: 0.000 min  
 Exp R.T. : 6.250 min  
 Response: 0  
 Conc: N.D.



#10 gamma-Chlordane  
 R.T.: 5.432 min  
 Delta R.T.: 0.000 min  
 Response: 1323417  
 Conc: 1.17 ng/ml



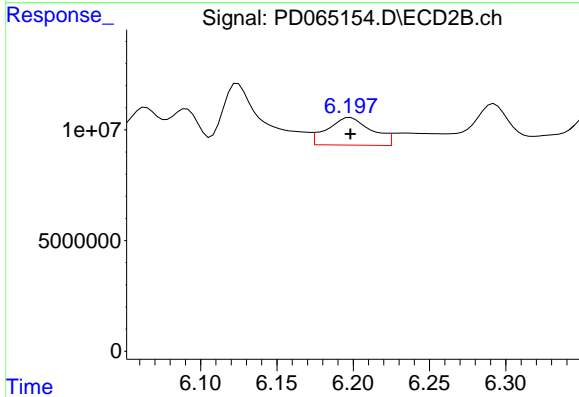
#10 gamma-Chlordane  
 R.T.: 6.124 min  
 Delta R.T.: -0.002 min  
 Response: 49341227  
 Conc: 6.45 ng/ml



#11 alpha-Chlordane

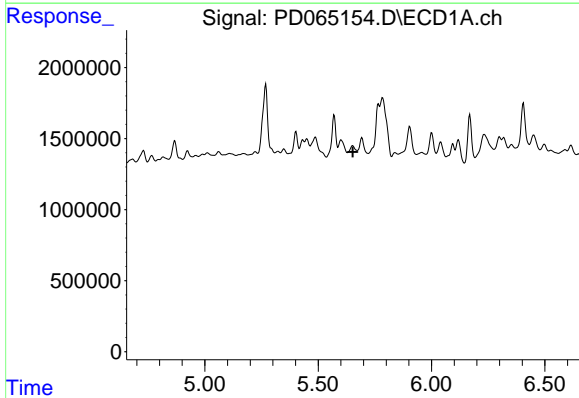
R.T.: 5.488 min  
 Delta R.T.: -0.003 min  
 Response: 2919805  
 Conc: 2.61 ng/ml

Instrument :  
 ECD\_D  
 ClientSampleId :



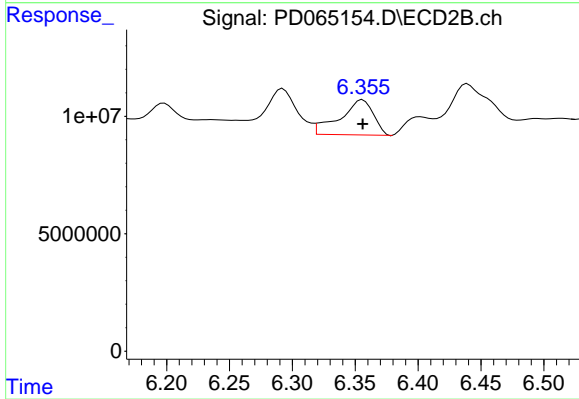
#11 alpha-Chlordane

R.T.: 6.198 min  
 Delta R.T.: 0.000 min  
 Response: 25115329  
 Conc: 3.37 ng/ml



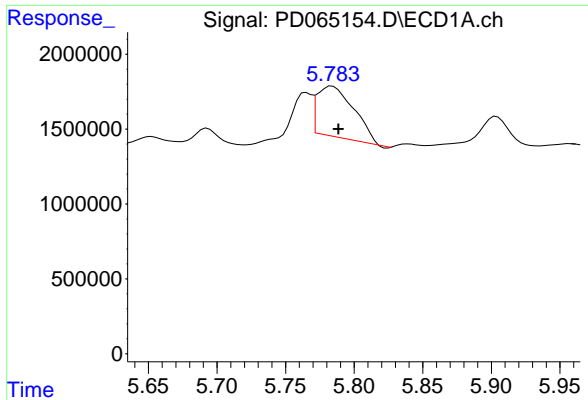
#12 4,4'-DDE

R.T.: 0.000 min  
 Exp R.T. : 5.653 min  
 Response: 0  
 Conc: N.D.



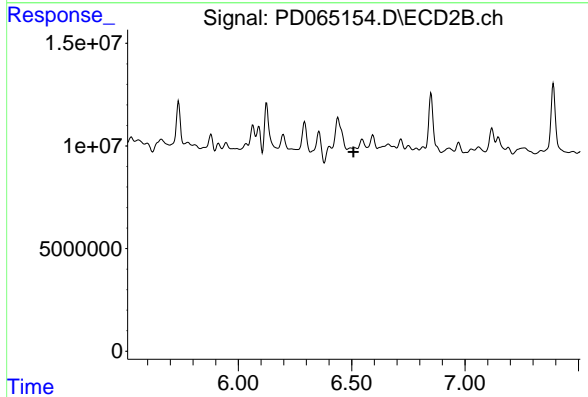
#12 4,4'-DDE

R.T.: 6.356 min  
 Delta R.T.: 0.000 min  
 Response: 27800008  
 Conc: 3.87 ng/ml

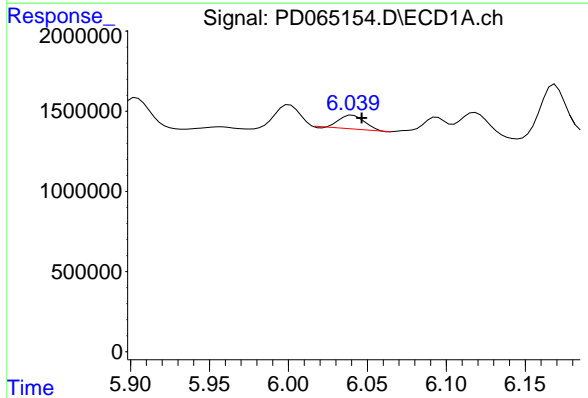


#13 Dieldrin  
 R.T.: 5.784 min  
 Delta R.T.: -0.004 min  
 Response: 6176545  
 Conc: 5.50 ng/ml

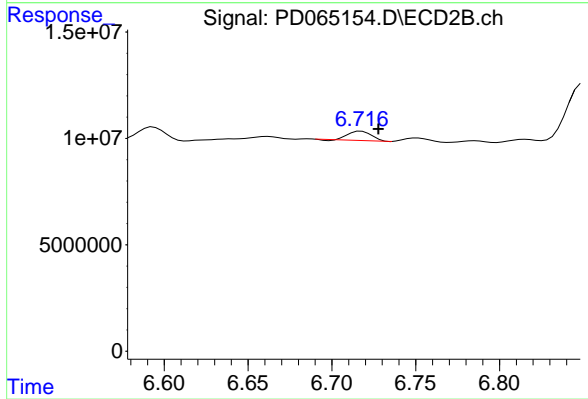
Instrument :  
 ECD\_D  
 ClientSampled :



#13 Dieldrin  
 R.T.: 0.000 min  
 Exp R.T. : 6.508 min  
 Response: 0  
 Conc: N.D.

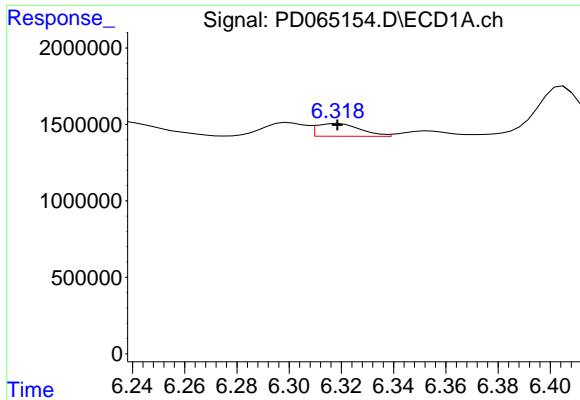


#14 Endrin  
 R.T.: 6.041 min  
 Delta R.T.: -0.006 min  
 Response: 953656  
 Conc: 0.91 ng/ml



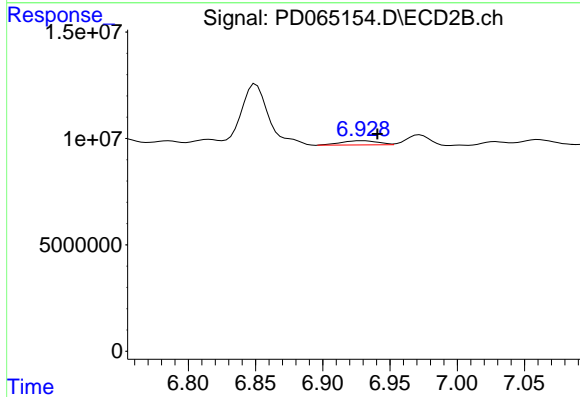
#14 Endrin  
 R.T.: 6.718 min  
 Delta R.T.: -0.010 min  
 Response: 4065119  
 Conc: 0.66 ng/ml



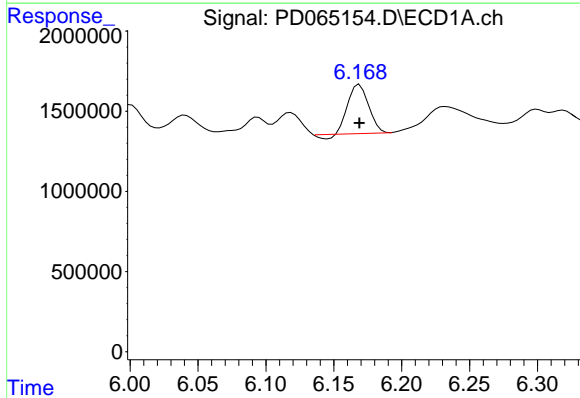


#15 Endosulfan II  
 R.T.: 6.319 min  
 Delta R.T.: 0.000 min  
 Response: 985043  
 Conc: 0.99 ng/ml

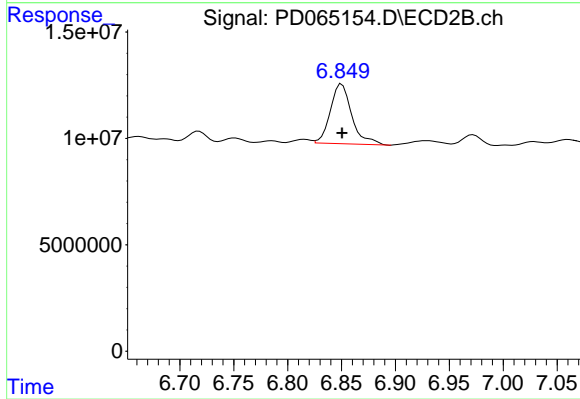
Instrument :  
 ECD\_D  
 ClientSampleId :



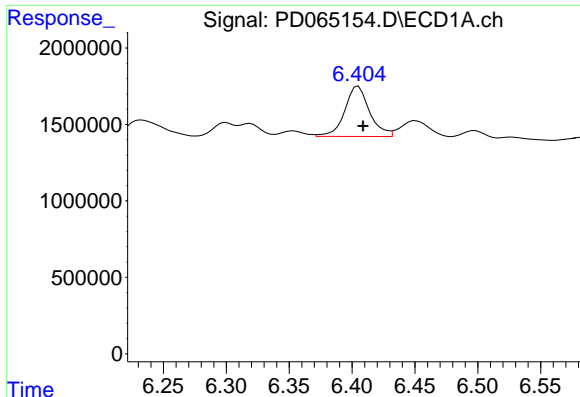
#15 Endosulfan II  
 R.T.: 6.931 min  
 Delta R.T.: -0.010 min  
 Response: 3758085  
 Conc: 0.64 ng/ml



#16 4,4'-DDD  
 R.T.: 6.169 min  
 Delta R.T.: 0.000 min  
 Response: 3118589  
 Conc: 3.30 ng/ml



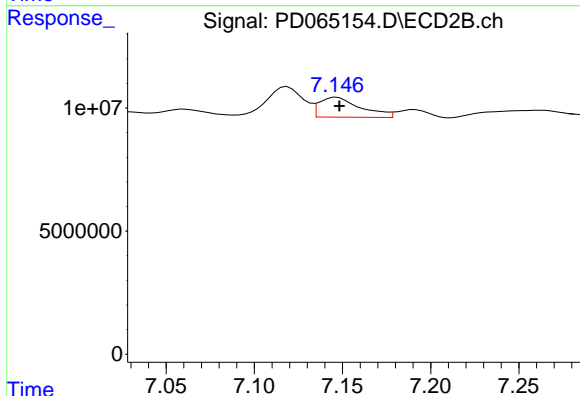
#16 4,4'-DDD  
 R.T.: 6.850 min  
 Delta R.T.: 0.000 min  
 Response: 38869273  
 Conc: 6.61 ng/ml



#17 4,4'-DDT

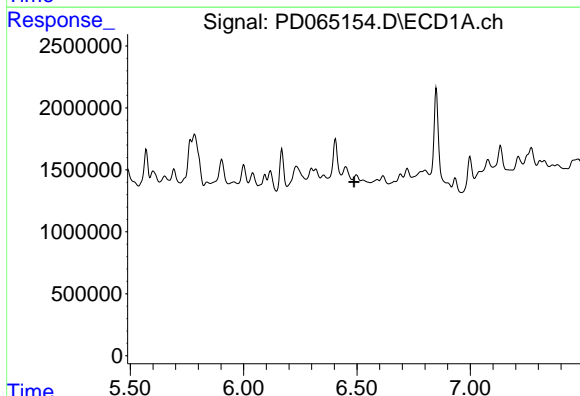
R.T.: 6.405 min  
 Delta R.T.: -0.004 min  
 Response: 4522448  
 Conc: 4.55 ng/ml

Instrument :  
 ECD\_D  
 ClientSampled :



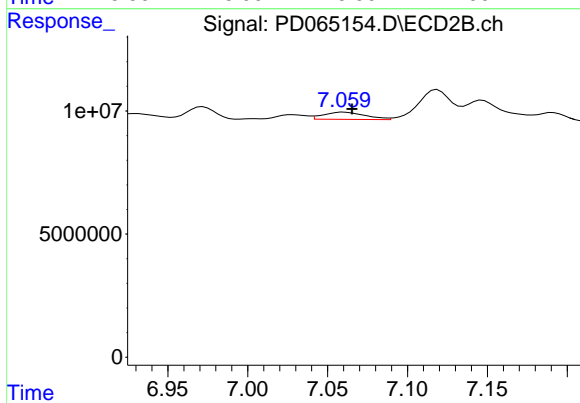
#17 4,4'-DDT

R.T.: 7.147 min  
 Delta R.T.: -0.001 min  
 Response: 13115374  
 Conc: 2.19 ng/ml



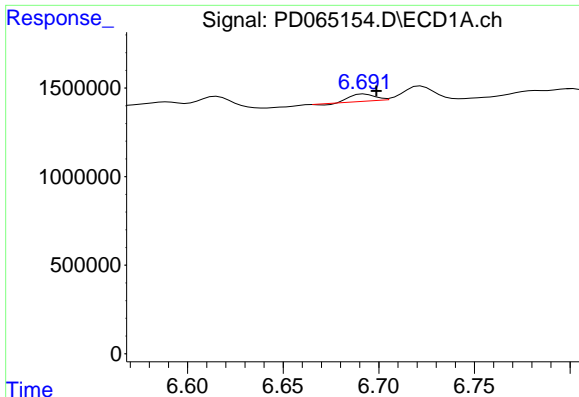
#18 Endrin aldehyde

R.T.: 0.000 min  
 Exp R.T. : 6.487 min  
 Response: 0  
 Conc: N.D.



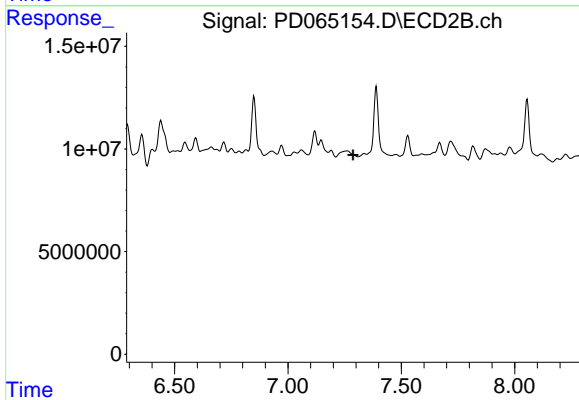
#18 Endrin aldehyde

R.T.: 7.060 min  
 Delta R.T.: -0.005 min  
 Response: 5267511  
 Conc: 1.13 ng/ml

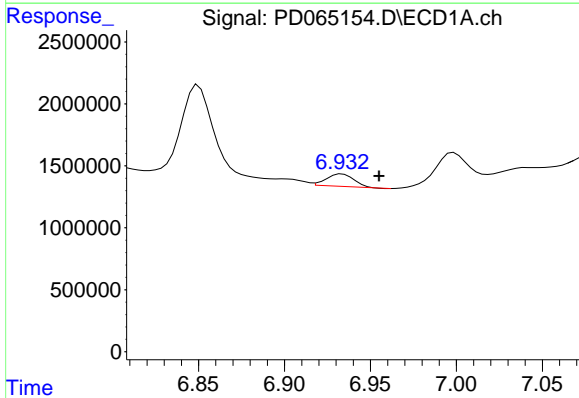


#19 Endosulfan Sulfate  
 R.T.: 6.693 min  
 Delta R.T.: -0.006 min  
 Response: 341945  
 Conc: 0.32 ng/ml

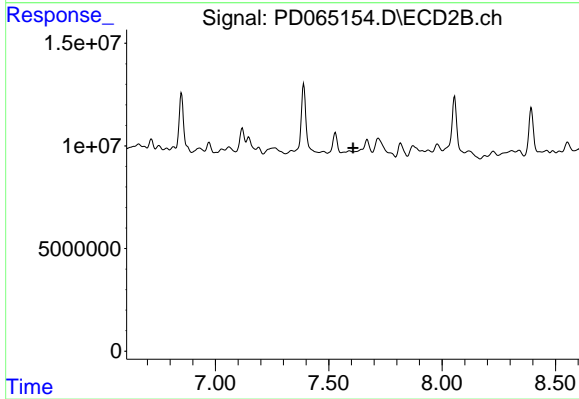
Instrument :  
 ECD\_D  
 ClientSampleId :



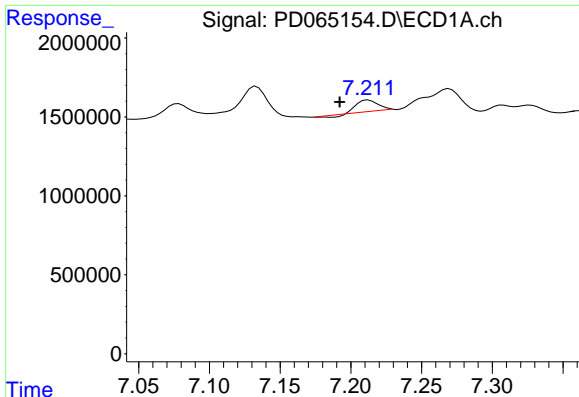
#19 Endosulfan Sulfate  
 R.T.: 0.000 min  
 Exp R.T. : 7.287 min  
 Response: 0  
 Conc: N.D.



#20 Methoxychlor  
 R.T.: 6.933 min  
 Delta R.T.: -0.021 min  
 Response: 1125335  
 Conc: 1.91 ng/ml



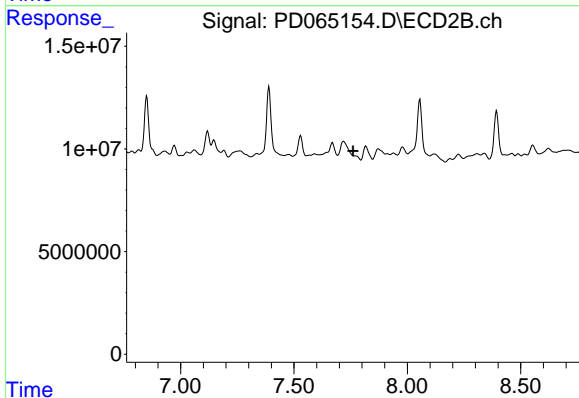
#20 Methoxychlor  
 R.T.: 0.000 min  
 Exp R.T. : 7.607 min  
 Response: 0  
 Conc: N.D.



#21 Endrin ketone

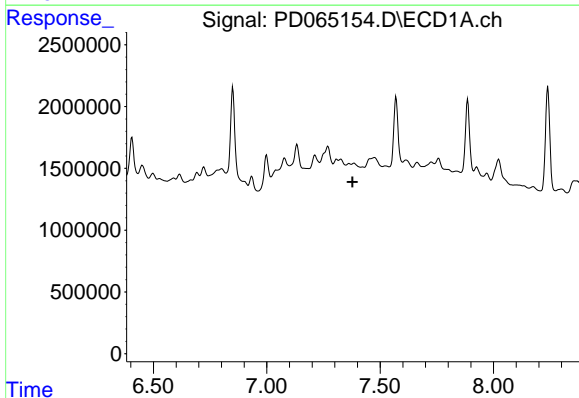
R.T.: 7.212 min  
 Delta R.T.: 0.020 min  
 Response: 747572  
 Conc: 0.59 ng/ml

Instrument :  
 ECD\_D  
 ClientSampled :



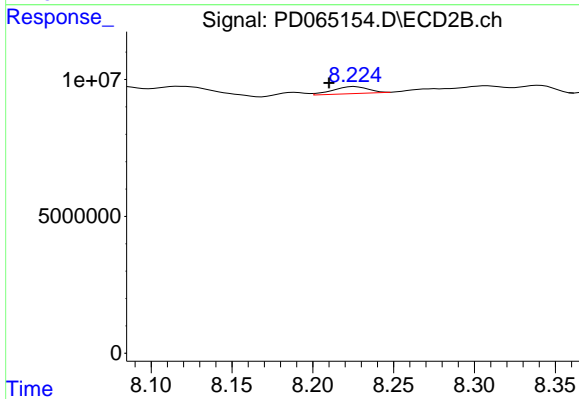
#21 Endrin ketone

R.T.: 0.000 min  
 Exp R.T. : 7.761 min  
 Response: 0  
 Conc: N.D.



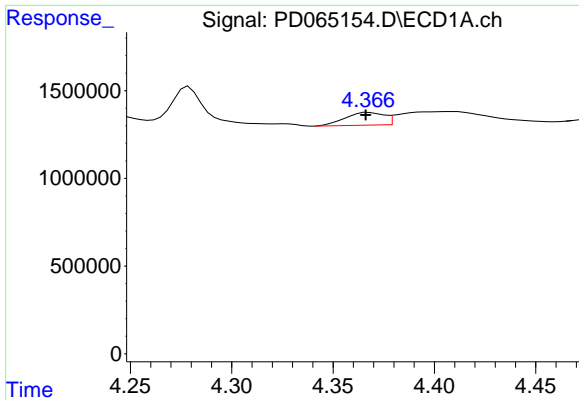
#22 Mirex

R.T.: 0.000 min  
 Exp R.T. : 7.378 min  
 Response: 0  
 Conc: N.D.



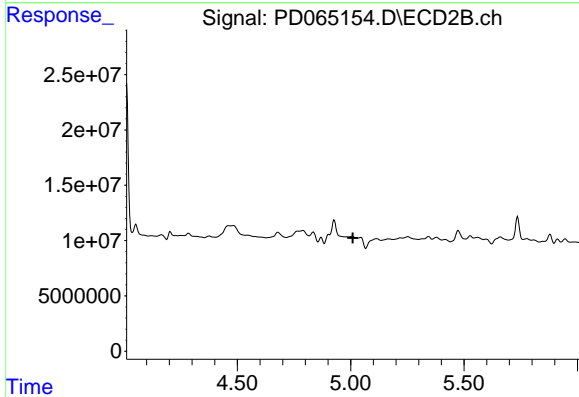
#22 Mirex

R.T.: 8.226 min  
 Delta R.T.: 0.016 min  
 Response: 3821220  
 Conc: 0.86 ng/ml

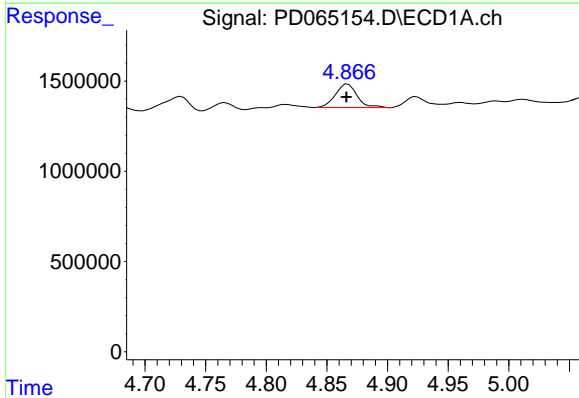


#23 Chlordane-1  
 R.T.: 4.367 min  
 Delta R.T.: 0.001 min  
 Response: 963146  
 Conc: 25.43 ng/ml

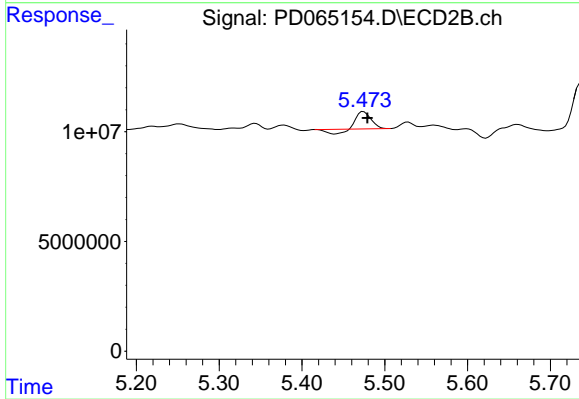
Instrument :  
 ECD\_D  
 ClientSampled :



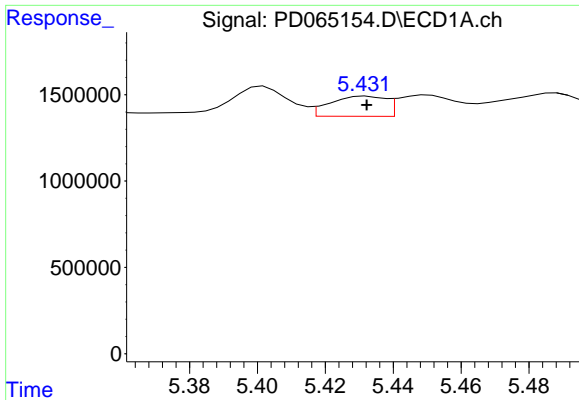
#23 Chlordane-1  
 R.T.: 0.000 min  
 Exp R.T. : 5.009 min  
 Response: 0  
 Conc: N.D.



#24 Chlordane-2  
 R.T.: 4.867 min  
 Delta R.T.: 0.001 min  
 Response: 1607053  
 Conc: 36.82 ng/ml

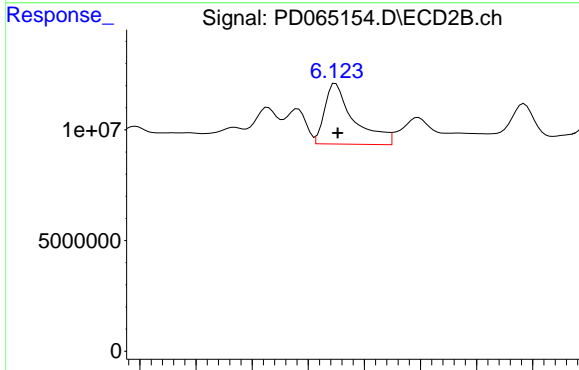


#24 Chlordane-2  
 R.T.: 5.474 min  
 Delta R.T.: -0.005 min  
 Response: 7066065  
 Conc: 22.59 ng/ml

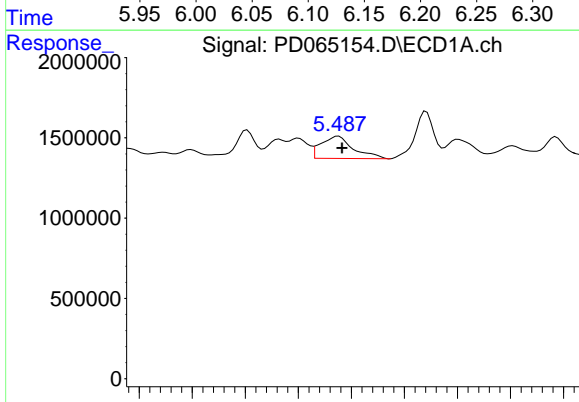


#25 Chlordane-3  
 R.T.: 5.432 min  
 Delta R.T.: 0.000 min  
 Response: 1323417  
 Conc: 11.99 ng/ml

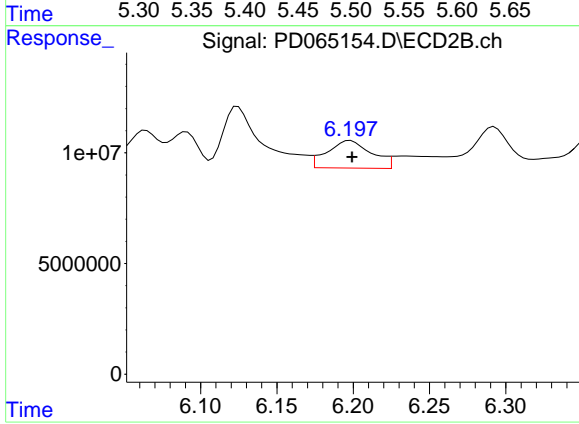
Instrument :  
 ECD\_D  
 ClientSampleId :



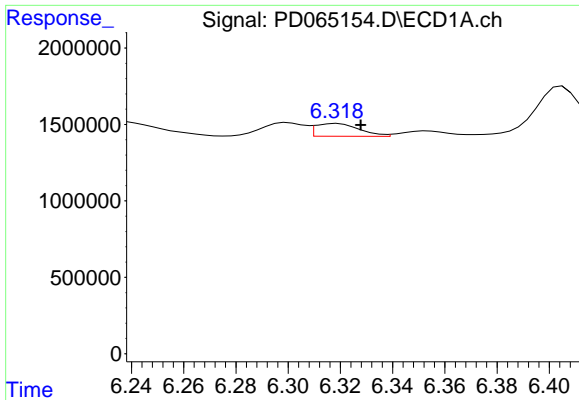
#25 Chlordane-3  
 R.T.: 6.124 min  
 Delta R.T.: -0.002 min  
 Response: 49341227  
 Conc: 47.73 ng/ml



#26 Chlordane-4  
 R.T.: 5.488 min  
 Delta R.T.: -0.003 min  
 Response: 2919805  
 Conc: 31.80 ng/ml

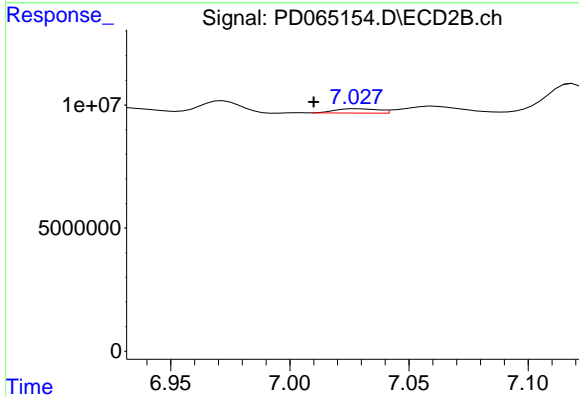


#26 Chlordane-4  
 R.T.: 6.198 min  
 Delta R.T.: -0.001 min  
 Response: 25115329  
 Conc: 20.89 ng/ml

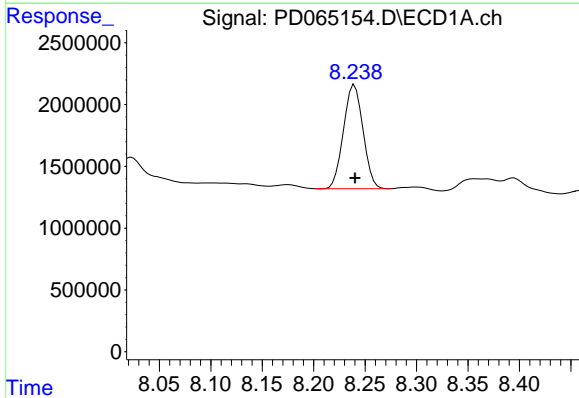


#27 Chlordane-5  
 R.T.: 6.319 min  
 Delta R.T.: -0.009 min  
 Response: 985043  
 Conc: 21.90 ng/ml

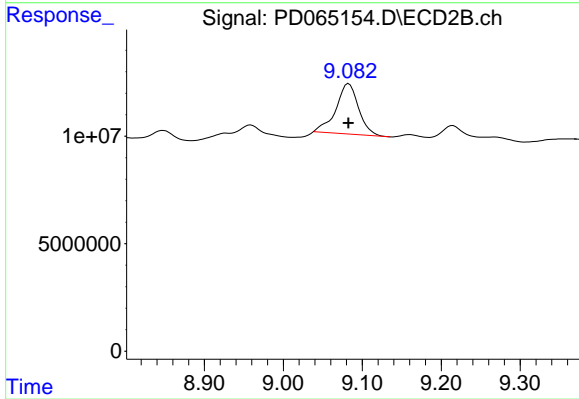
Instrument :  
 ECD\_D  
 ClientSampled :



#27 Chlordane-5  
 R.T.: 7.028 min  
 Delta R.T.: 0.018 min  
 Response: 2201189  
 Conc: 9.28 ng/ml



#28 Decachlorobiphenyl  
 R.T.: 8.240 min  
 Delta R.T.: 0.000 min  
 Response: 11132161  
 Conc: 9.83 ng/ml



#28 Decachlorobiphenyl  
 R.T.: 9.083 min  
 Delta R.T.: 0.000 min  
 Response: 46452559  
 Conc: 9.82 ng/ml