

Data Path : Z:\pestpcbsrv\HPCHEM1\ECD_D\Data\PD082121\
 Data File : PD065182.D
 Signal(s) : Signal #1: ECD1A.ch Signal #2: ECD2B.ch
 Acq On : 21 Aug 2021 12:13
 Operator : AR\AJ
 Sample : PB138591BS
 Misc :
 ALS Vial : 64 Sample Multiplier: 1

Instrument :
 ECD_D
 ClientSampleId :
 PB138591BS

Integration File signal 1: autoint1.e
 Integration File signal 2: autoint2.e
 Quant Time: Aug 23 01:51:50 2021
 Quant Method : Z:\pestpcbsrv\HPCHEM1\ECD_D\Method\PD082021.M
 Quant Title : GC Extractables
 QLast Update : Fri Aug 20 02:25:41 2021
 Response via : Initial Calibration
 Integrator: ChemStation

Volume Inj. : 2 µl
 Signal #1 Phase : ZB-MR2 Signal #2 Phase: ZB-MR1
 Signal #1 Info : 30M x 0.32mm x0.2 Signal #2 Info : 30M x 0.32mm x 0.50µm

	Compound	RT#1	RT#2	Resp#1	Resp#2	ng/ml	ng/ml

System Monitoring Compounds							
1)	SA Tetrachlo...	3.497	4.013	18498660	146.6E6	17.997	18.505
28)	SA Decachlor...	8.242	9.085	24472125	93126963	21.599	19.678
Target Compounds							
2)	A alpha-BHC	3.937	4.408	66794220	534.1E6	46.671	45.976
3)	MA gamma-BHC...	4.220	4.694	63867672	476.6E6	46.552	44.986
4)	MA Heptachlor	4.519	5.198	58874464	452.4E6	45.202	45.118
5)	MB Aldrin	4.767	5.503	54679750	397.7E6	45.597	44.026
6)	B beta-BHC	4.468	4.870	30479160	227.7E6	46.682	50.657
7)	B delta-BHC	4.673	5.087	61178897	436.4E6	46.275	44.933
8)	B Heptachlo...	5.209	5.893	53745795	340.4E6	47.296	45.630
9)	A Endosulfan I	5.548	6.251	50986347	326.5E6	47.798	46.357
10)	B gamma-Chl...	5.434	6.127	53884648	345.5E6	47.657	45.183
11)	B alpha-Chl...	5.493	6.198	52997047	340.5E6	47.333	45.735
12)	B 4,4'-DDE	5.655	6.357	51582070	337.1E6	48.942	46.952
13)	MA Dieldrin	5.790	6.509	55897542	346.6E6	49.808	47.761
14)	MA Endrin	6.048	6.728	51274562	290.0E6	48.861	47.113
15)	B Endosulfa...	6.320	6.941	51484440	296.4E6	51.491	50.544
16)	A 4,4'-DDD	6.170	6.850	45773782	285.2E6	48.397	48.492
17)	MA 4,4'-DDT	6.410	7.148	49725950	283.7E6	50.001	47.301
18)	B Endrin al...	6.489	7.065	44055022	245.7E6	53.239	52.673
19)	B Endosulfa...	6.700	7.288	53299894	282.6E6	50.193	49.286
20)	A Methoxychlor	6.956	7.608	30458447	168.2E6	51.675	55.599
21)	B Endrin ke...	7.194	7.762	66189034	327.9E6	51.918	50.458
22)	Mirex	7.380	8.211	50570504	223.2E6	49.593	50.121
23)	Chlordane-1	4.368	0.000	1134785	0	29.964	N.D. #
24)	Chlordane-2	0.000	5.503f	0	397.7E6	N.D.	1271.285 #
25)	Chlordane-3	5.434	6.127	53884648	345.5E6	488.214	334.160 #
26)	Chlordane-4	5.493	6.198	52997047	340.5E6	577.286	283.186 #
27)	Chlordane-5	6.320	0.000	51484440	0	1144.384	N.D. #

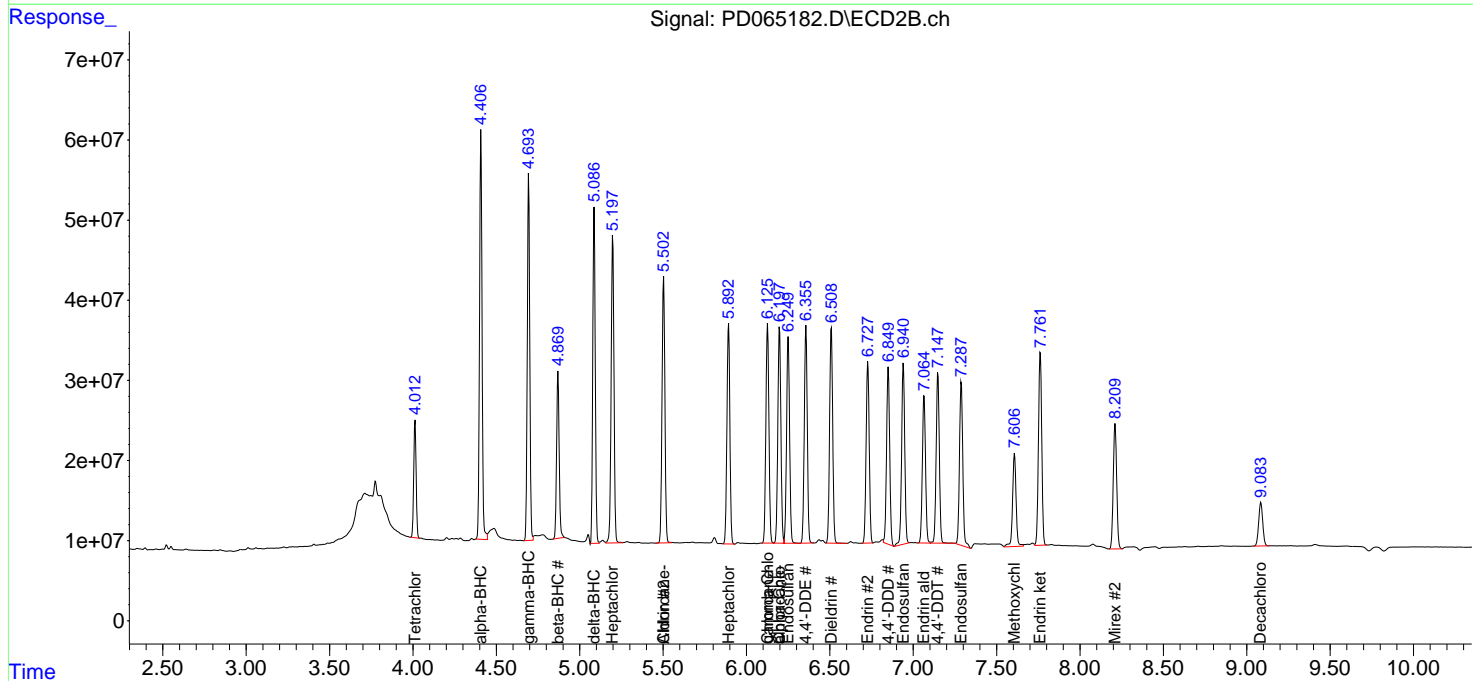
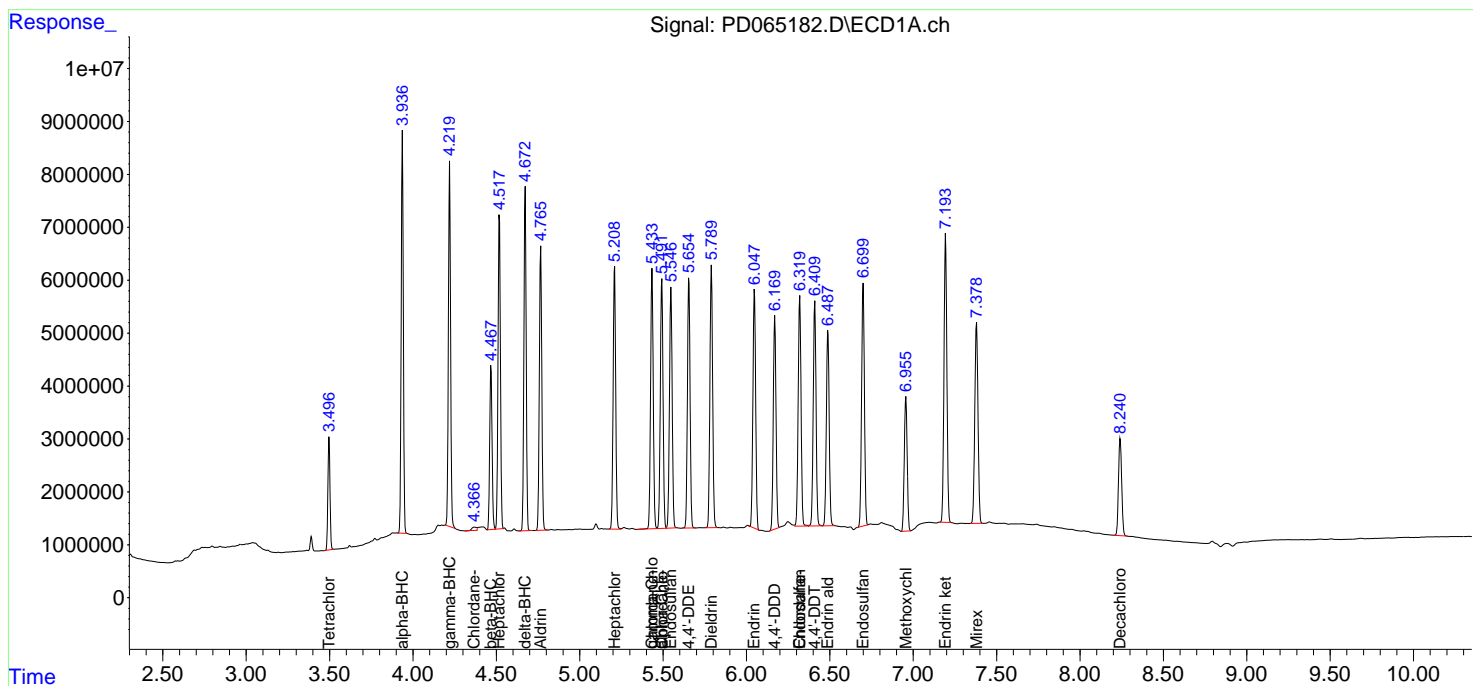
(f)=RT Delta > 1/2 Window (#)=Amounts differ by > 25% (m)=manual int.

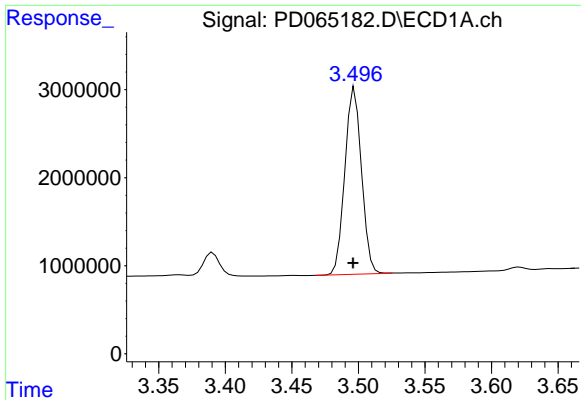
Data Path : Z:\pestpcbsrv\HPCHEM1\ECD_D\Data\PD082121\
 Data File : PD065182.D
 Signal(s) : Signal #1: ECD1A.ch Signal #2: ECD2B.ch
 Acq On : 21 Aug 2021 12:13
 Operator : AR\AJ
 Sample : PB138591BS
 Misc :
 ALS Vial : 64 Sample Multiplier: 1

Instrument :
 ECD_D
 ClientSampled :
 PB138591BS

Integration File signal 1: autoint1.e
 Integration File signal 2: autoint2.e
 Quant Time: Aug 23 01:51:50 2021
 Quant Method : Z:\pestpcbsrv\HPCHEM1\ECD_D\Method\PD082021.M
 Quant Title : GC Extractables
 QLast Update : Fri Aug 20 02:25:41 2021
 Response via : Initial Calibration
 Integrator: ChemStation

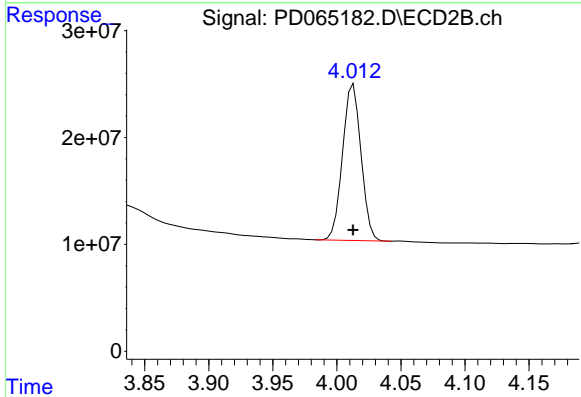
Volume Inj. : 2 µl
 Signal #1 Phase : ZB-MR2 Signal #2 Phase: ZB-MR1
 Signal #1 Info : 30M x 0.32mm x0.2 Signal #2 Info : 30M x 0.32mm x 0.50µm



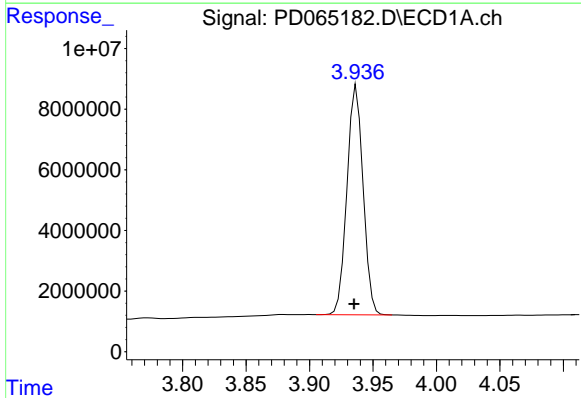


#1 Tetrachloro-m-xylene
 R.T.: 3.497 min
 Delta R.T.: 0.001 min
 Response: 18498660
 Conc: 18.00 ng/ml

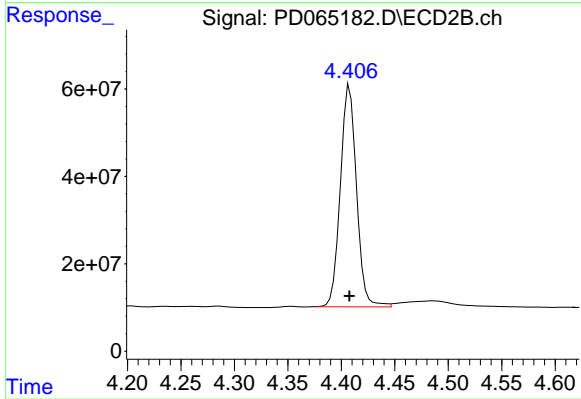
Instrument :
 ECD_D
 ClientSampleId :
 PB138591BS



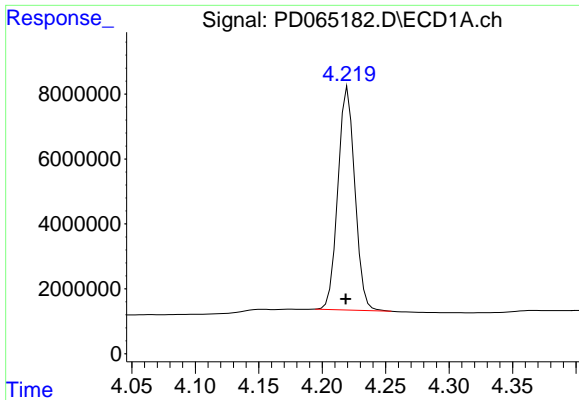
#1 Tetrachloro-m-xylene
 R.T.: 4.013 min
 Delta R.T.: 0.000 min
 Response: 146573862
 Conc: 18.51 ng/ml



#2 alpha-BHC
 R.T.: 3.937 min
 Delta R.T.: 0.002 min
 Response: 66794220
 Conc: 46.67 ng/ml

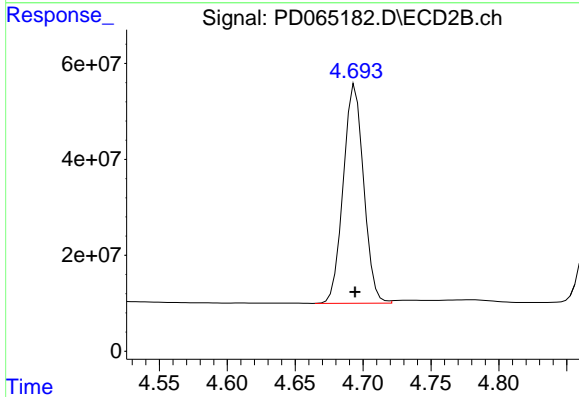


#2 alpha-BHC
 R.T.: 4.408 min
 Delta R.T.: 0.000 min
 Response: 534101215
 Conc: 45.98 ng/ml

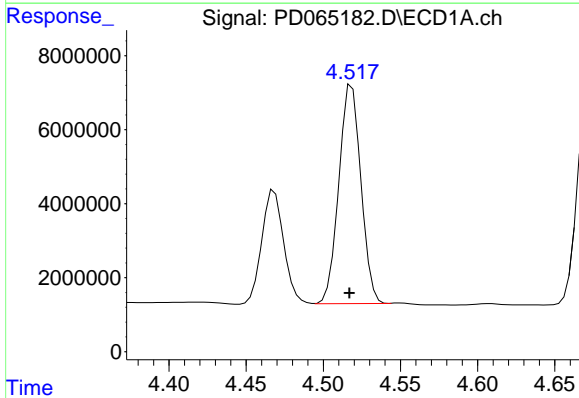


#3 gamma-BHC (Lindane)
 R.T.: 4.220 min
 Delta R.T.: 0.002 min
 Response: 63867672
 Conc: 46.55 ng/ml

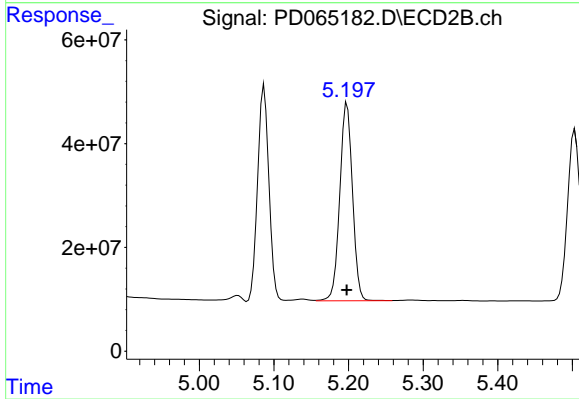
Instrument :
 ECD_D
 ClientSampleId :
 PB138591BS



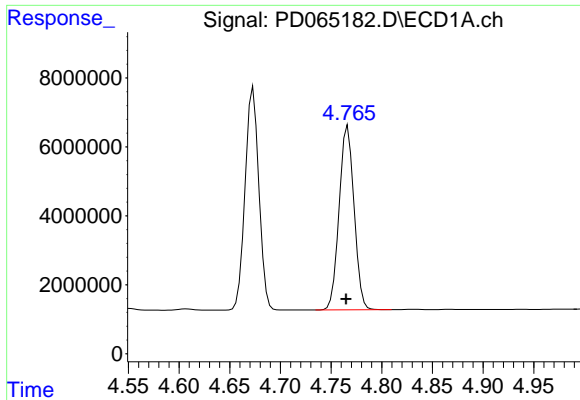
#3 gamma-BHC (Lindane)
 R.T.: 4.694 min
 Delta R.T.: 0.000 min
 Response: 476550879
 Conc: 44.99 ng/ml



#4 Heptachlor
 R.T.: 4.519 min
 Delta R.T.: 0.002 min
 Response: 58874464
 Conc: 45.20 ng/ml

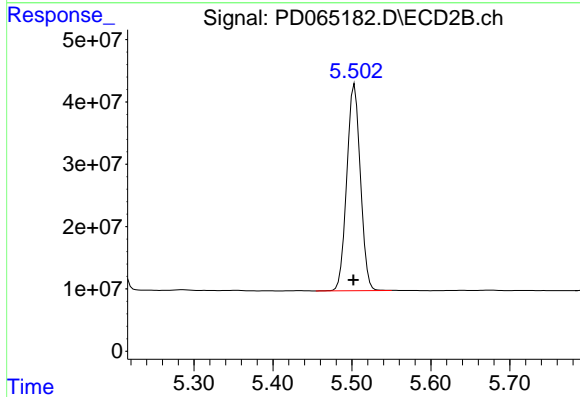


#4 Heptachlor
 R.T.: 5.198 min
 Delta R.T.: 0.000 min
 Response: 452356668
 Conc: 45.12 ng/ml

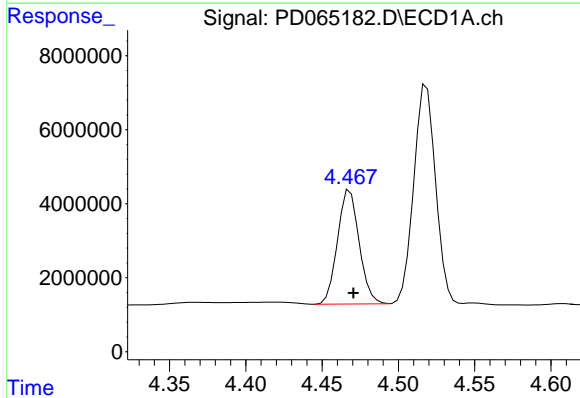


#5 Aldrin
 R.T.: 4.767 min
 Delta R.T.: 0.002 min
 Response: 54679750
 Conc: 45.60 ng/ml

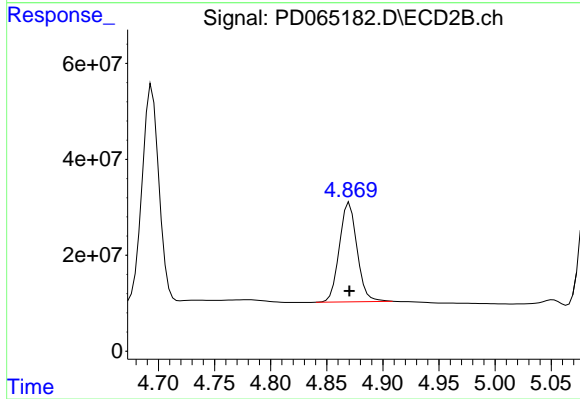
Instrument :
 ECD_D
 ClientSampled :
 PB138591BS



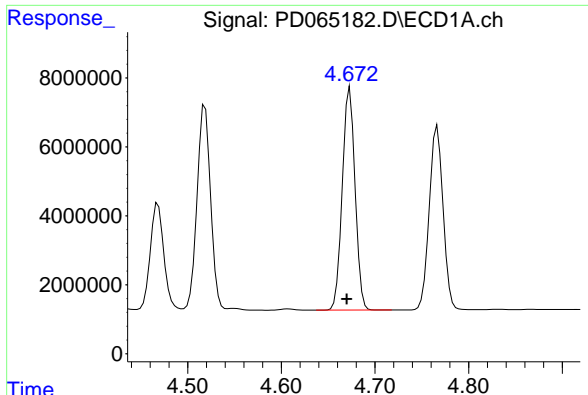
#5 Aldrin
 R.T.: 5.503 min
 Delta R.T.: 0.002 min
 Response: 397688816
 Conc: 44.03 ng/ml



#6 beta-BHC
 R.T.: 4.468 min
 Delta R.T.: -0.002 min
 Response: 30479160
 Conc: 46.68 ng/ml



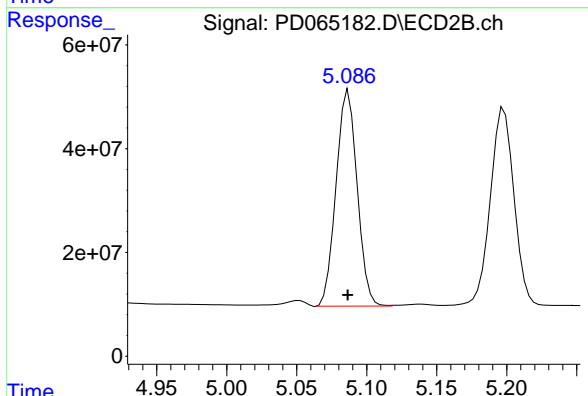
#6 beta-BHC
 R.T.: 4.870 min
 Delta R.T.: 0.000 min
 Response: 227723985
 Conc: 50.66 ng/ml



#7 delta-BHC

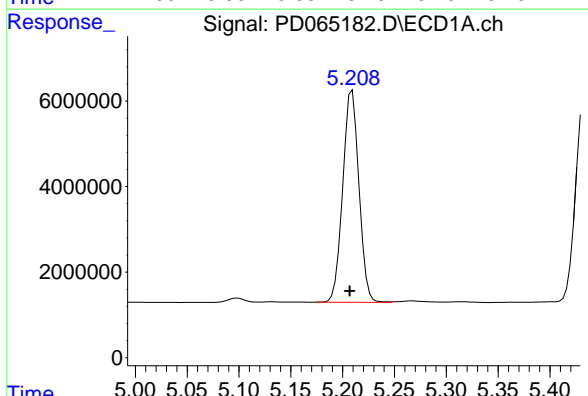
R.T.: 4.673 min
 Delta R.T.: 0.003 min
 Response: 61178897
 Conc: 46.27 ng/ml

Instrument :
 ECD_D
 ClientSampleId :
 PB138591BS



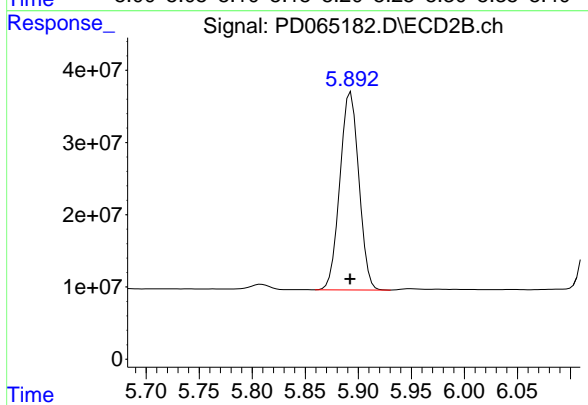
#7 delta-BHC

R.T.: 5.087 min
 Delta R.T.: 0.000 min
 Response: 436368929
 Conc: 44.93 ng/ml



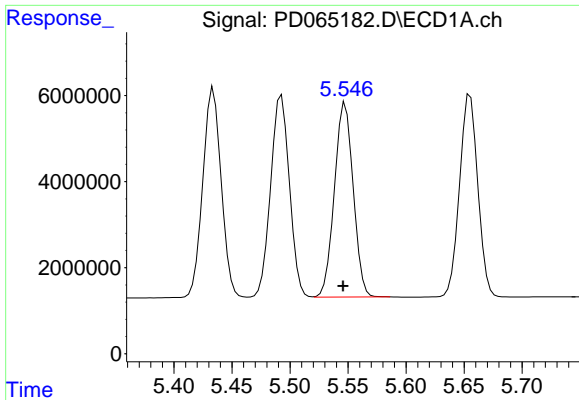
#8 Heptachlor epoxide

R.T.: 5.209 min
 Delta R.T.: 0.002 min
 Response: 53745795
 Conc: 47.30 ng/ml



#8 Heptachlor epoxide

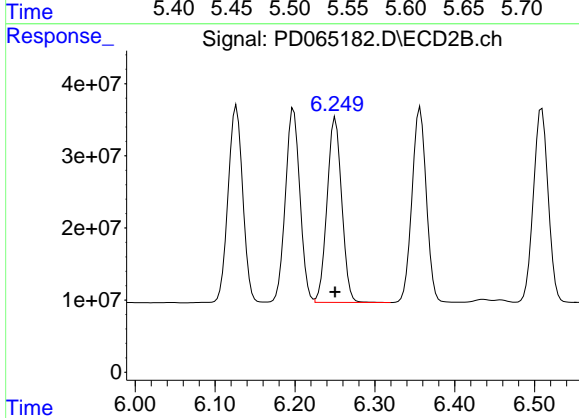
R.T.: 5.893 min
 Delta R.T.: 0.000 min
 Response: 340421758
 Conc: 45.63 ng/ml



#9 Endosulfan I

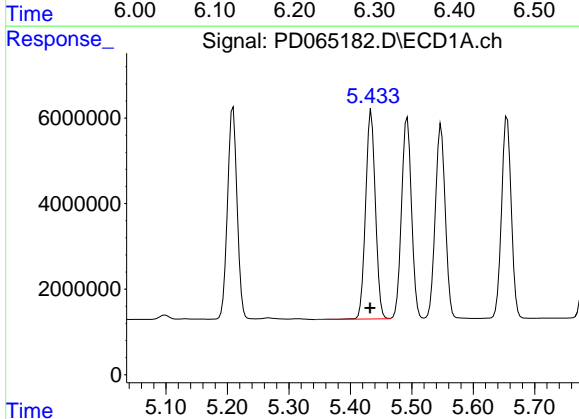
R.T.: 5.548 min
 Delta R.T.: 0.002 min
 Response: 50986347
 Conc: 47.80 ng/ml

Instrument :
 ECD_D
 ClientSampleId :
 PB138591BS



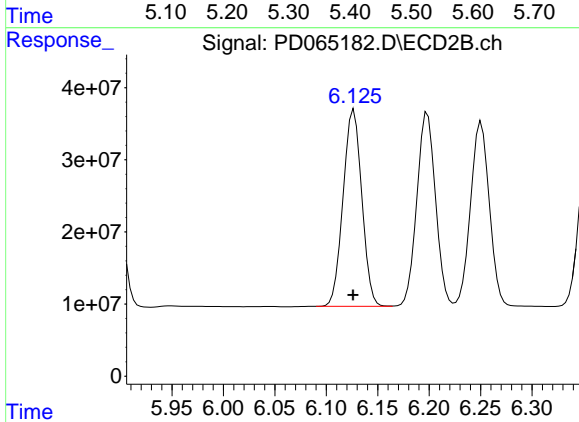
#9 Endosulfan I

R.T.: 6.251 min
 Delta R.T.: 0.000 min
 Response: 326472853
 Conc: 46.36 ng/ml



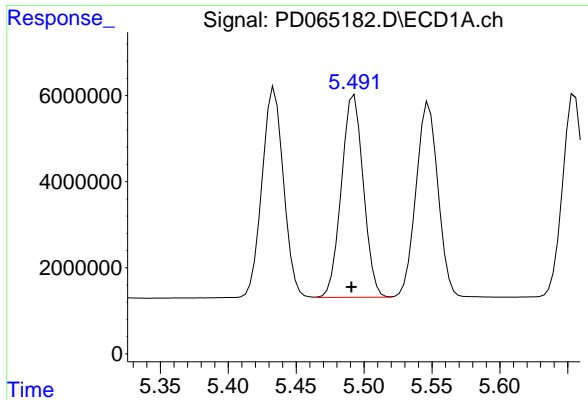
#10 gamma-Chlordane

R.T.: 5.434 min
 Delta R.T.: 0.002 min
 Response: 53884648
 Conc: 47.66 ng/ml



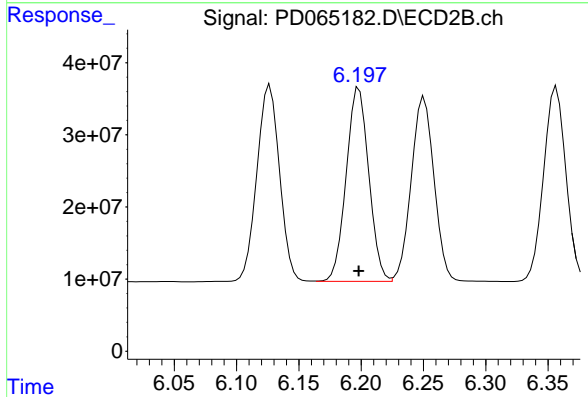
#10 gamma-Chlordane

R.T.: 6.127 min
 Delta R.T.: 0.000 min
 Response: 345472684
 Conc: 45.18 ng/ml

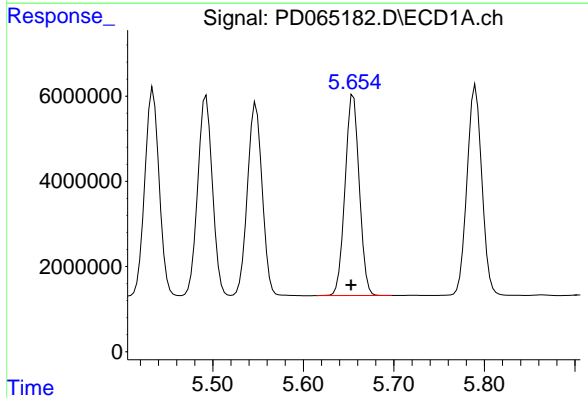


#11 alpha-Chlordane
 R.T.: 5.493 min
 Delta R.T.: 0.002 min
 Response: 52997047
 Conc: 47.33 ng/ml

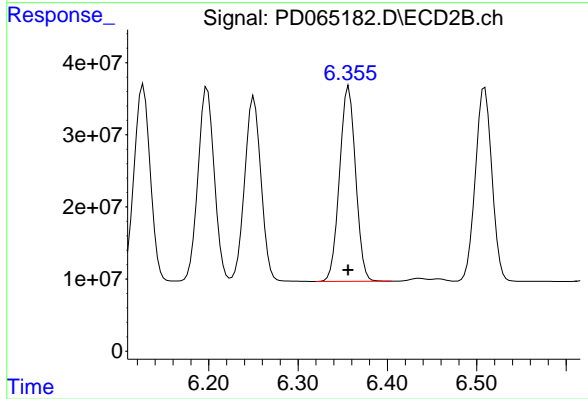
Instrument :
 ECD_D
 ClientSampleID :
 PB138591BS



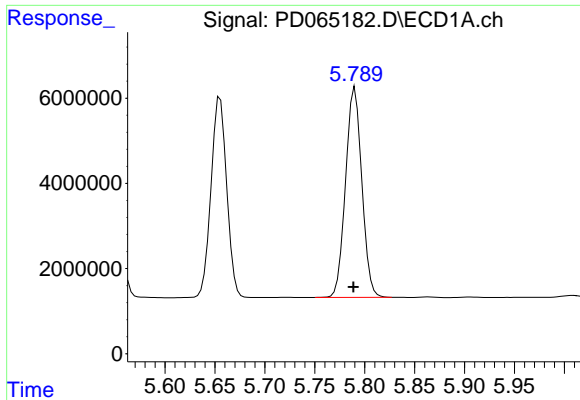
#11 alpha-Chlordane
 R.T.: 6.198 min
 Delta R.T.: 0.000 min
 Response: 340480339
 Conc: 45.74 ng/ml



#12 4,4'-DDE
 R.T.: 5.655 min
 Delta R.T.: 0.002 min
 Response: 51582070
 Conc: 48.94 ng/ml



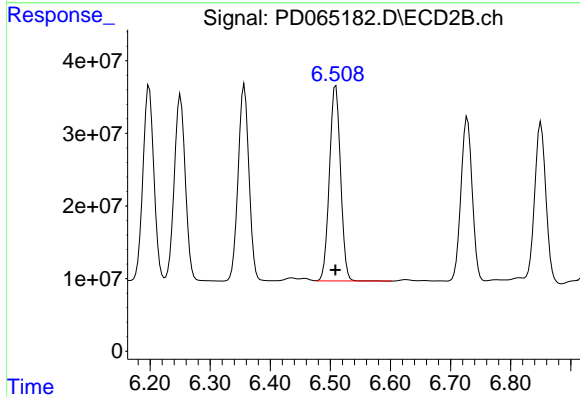
#12 4,4'-DDE
 R.T.: 6.357 min
 Delta R.T.: 0.000 min
 Response: 337148389
 Conc: 46.95 ng/ml



#13 Dieldrin

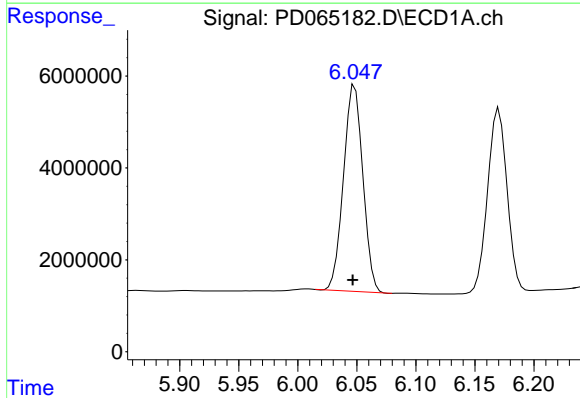
R.T.: 5.790 min
 Delta R.T.: 0.002 min
 Response: 55897542
 Conc: 49.81 ng/ml

Instrument :
 ECD_D
 ClientSampleId :
 PB138591BS



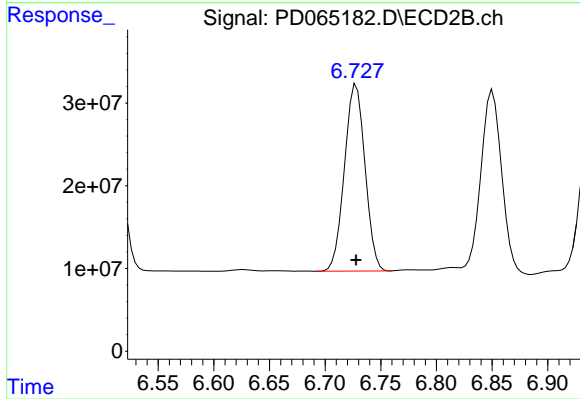
#13 Dieldrin

R.T.: 6.509 min
 Delta R.T.: 0.000 min
 Response: 346560038
 Conc: 47.76 ng/ml



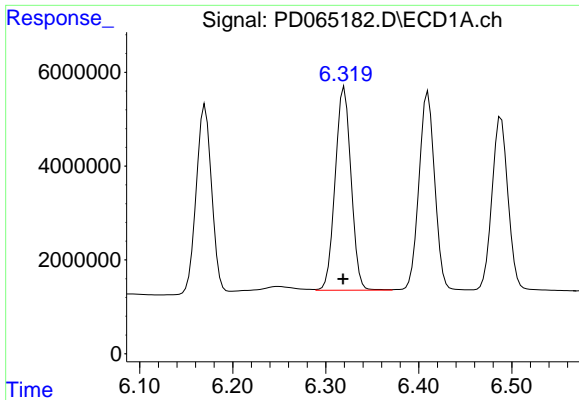
#14 Endrin

R.T.: 6.048 min
 Delta R.T.: 0.002 min
 Response: 51274562
 Conc: 48.86 ng/ml



#14 Endrin

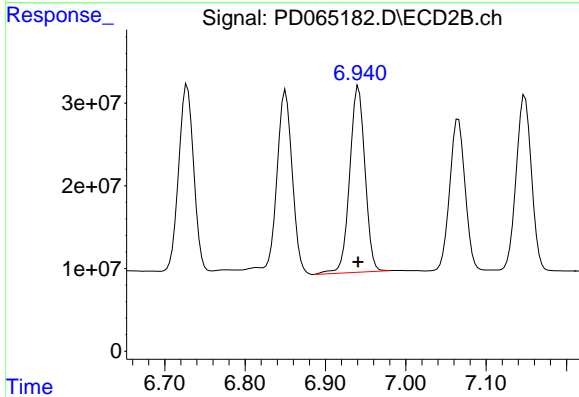
R.T.: 6.728 min
 Delta R.T.: 0.000 min
 Response: 289974588
 Conc: 47.11 ng/ml



#15 Endosulfan II

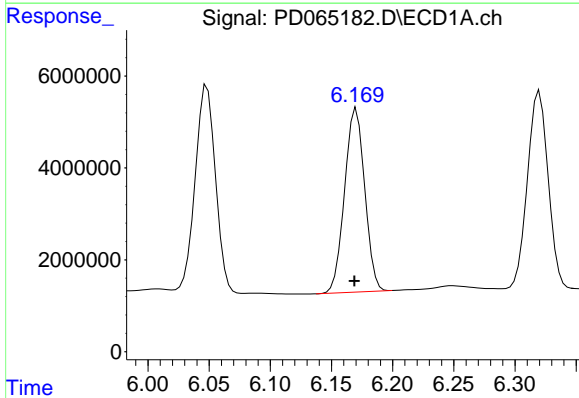
R.T.: 6.320 min
 Delta R.T.: 0.002 min
 Response: 51484440
 Conc: 51.49 ng/ml

Instrument :
 ECD_D
 ClientSampleId :
 PB138591BS



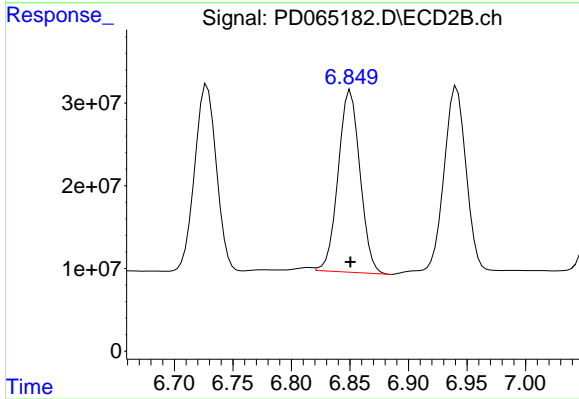
#15 Endosulfan II

R.T.: 6.941 min
 Delta R.T.: 0.000 min
 Response: 296385829
 Conc: 50.54 ng/ml



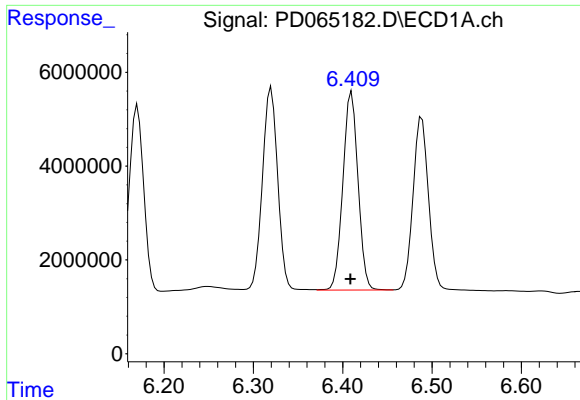
#16 4,4'-DDD

R.T.: 6.170 min
 Delta R.T.: 0.002 min
 Response: 45773782
 Conc: 48.40 ng/ml



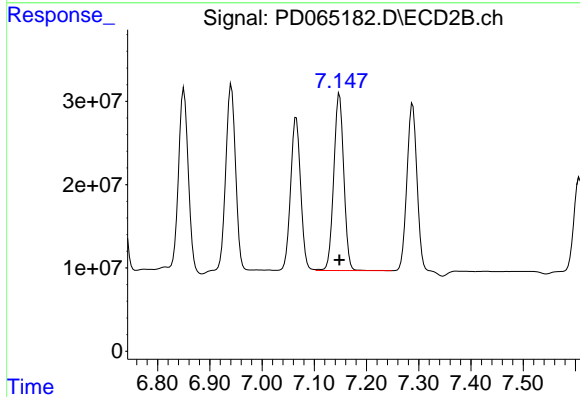
#16 4,4'-DDD

R.T.: 6.850 min
 Delta R.T.: 0.000 min
 Response: 285153044
 Conc: 48.49 ng/ml

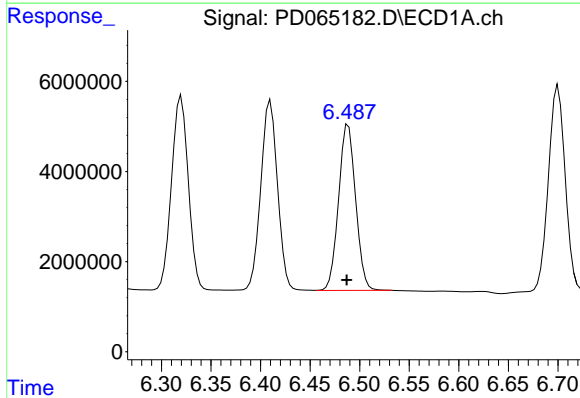


#17 4,4'-DDT
 R.T.: 6.410 min
 Delta R.T.: 0.001 min
 Response: 49725950
 Conc: 50.00 ng/ml

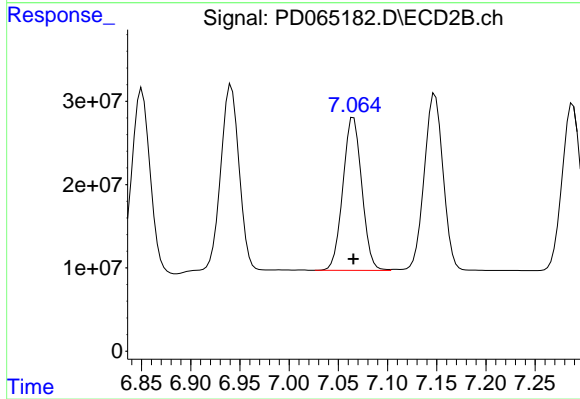
Instrument :
 ECD_D
 ClientSampleID :
 PB138591BS



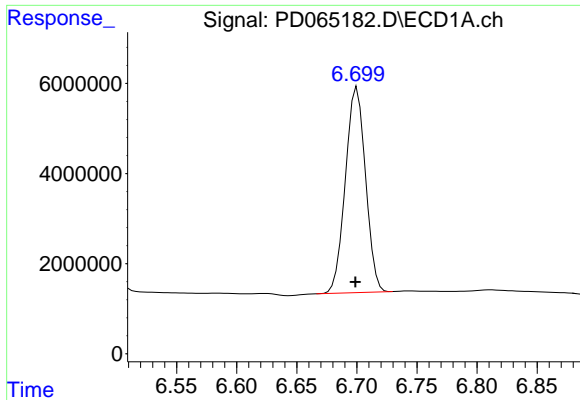
#17 4,4'-DDT
 R.T.: 7.148 min
 Delta R.T.: 0.000 min
 Response: 283658204
 Conc: 47.30 ng/ml



#18 Endrin aldehyde
 R.T.: 6.489 min
 Delta R.T.: 0.002 min
 Response: 44055022
 Conc: 53.24 ng/ml



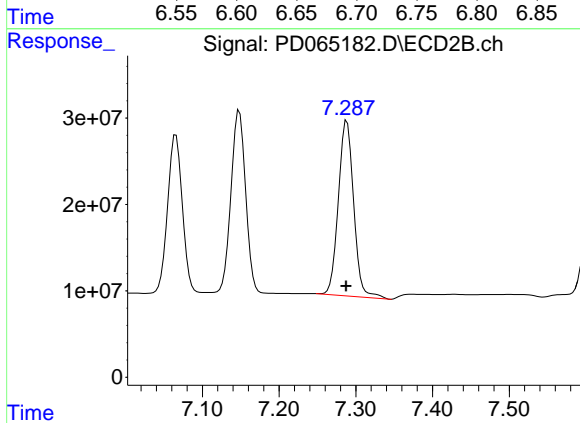
#18 Endrin aldehyde
 R.T.: 7.065 min
 Delta R.T.: 0.000 min
 Response: 245685541
 Conc: 52.67 ng/ml



#19 Endosulfan Sulfate

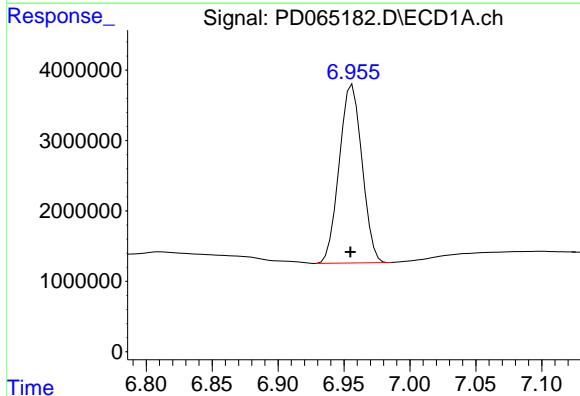
R.T.: 6.700 min
 Delta R.T.: 0.001 min
 Response: 53299894
 Conc: 50.19 ng/ml

Instrument :
 ECD_D
 ClientSampleId :
 PB138591BS



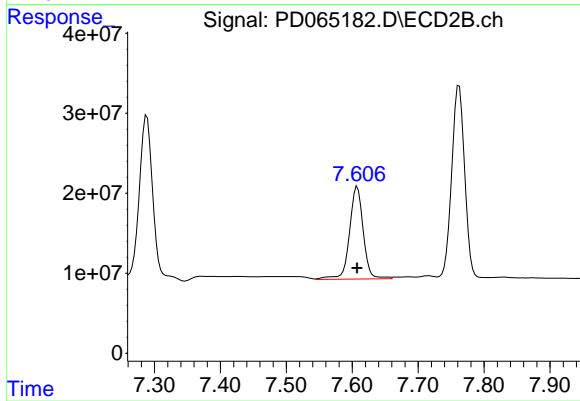
#19 Endosulfan Sulfate

R.T.: 7.288 min
 Delta R.T.: 0.000 min
 Response: 282634368
 Conc: 49.29 ng/ml



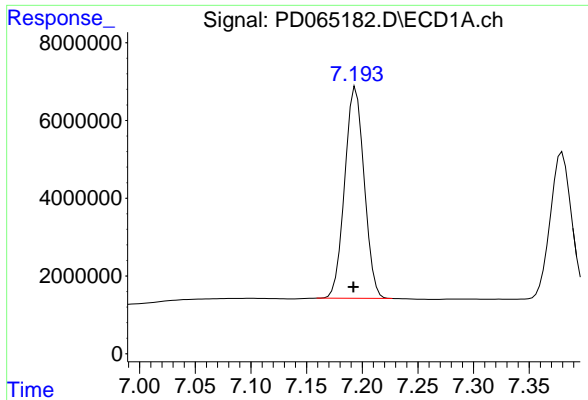
#20 Methoxychlor

R.T.: 6.956 min
 Delta R.T.: 0.001 min
 Response: 30458447
 Conc: 51.68 ng/ml



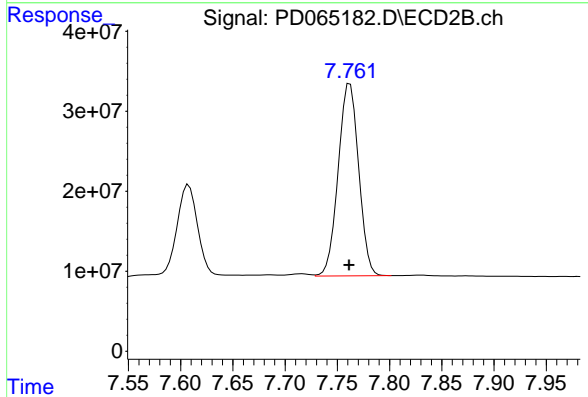
#20 Methoxychlor

R.T.: 7.608 min
 Delta R.T.: 0.000 min
 Response: 168247566
 Conc: 55.60 ng/ml

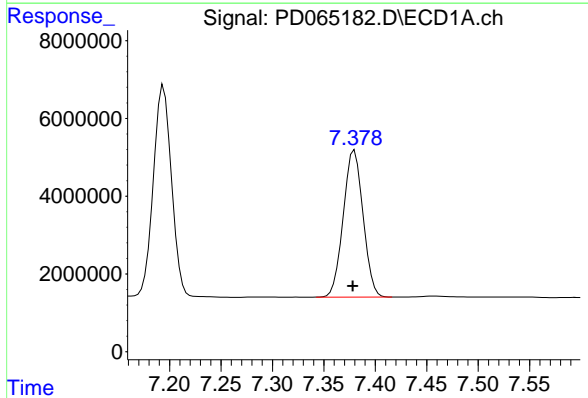


#21 Endrin ketone
 R.T.: 7.194 min
 Delta R.T.: 0.002 min
 Response: 66189034
 Conc: 51.92 ng/ml

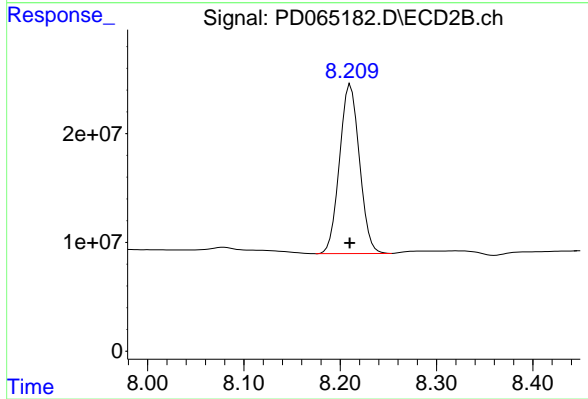
Instrument :
 ECD_D
 ClientSampleId :
 PB138591BS



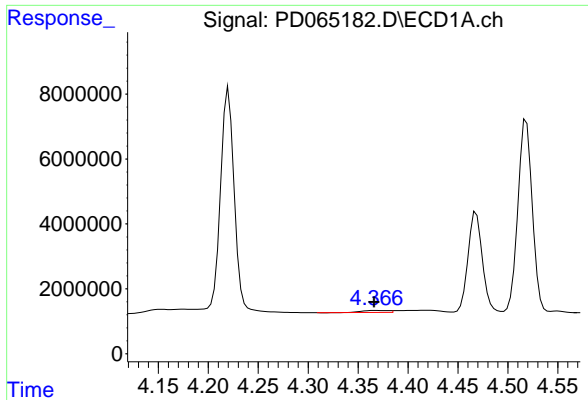
#21 Endrin ketone
 R.T.: 7.762 min
 Delta R.T.: 0.000 min
 Response: 327909966
 Conc: 50.46 ng/ml



#22 Mirex
 R.T.: 7.380 min
 Delta R.T.: 0.002 min
 Response: 50570504
 Conc: 49.59 ng/ml



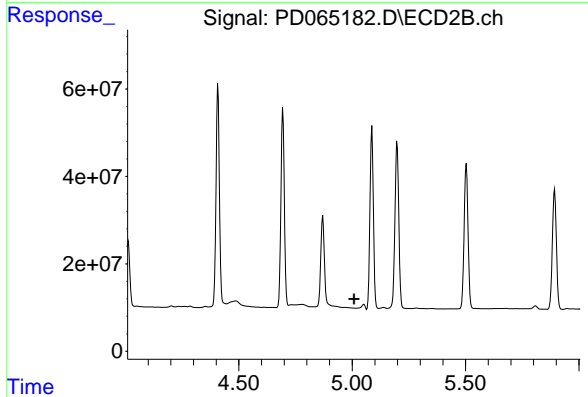
#22 Mirex
 R.T.: 8.211 min
 Delta R.T.: 0.000 min
 Response: 223154010
 Conc: 50.12 ng/ml



#23 Chlordane-1

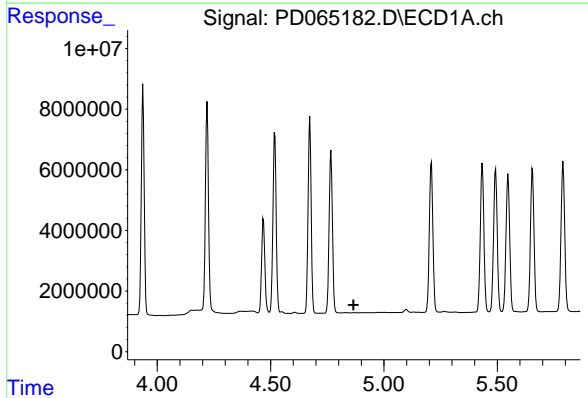
R.T.: 4.368 min
 Delta R.T.: 0.002 min
 Response: 1134785
 Conc: 29.96 ng/ml

Instrument :
 ECD_D
 ClientSampled :
 PB138591BS



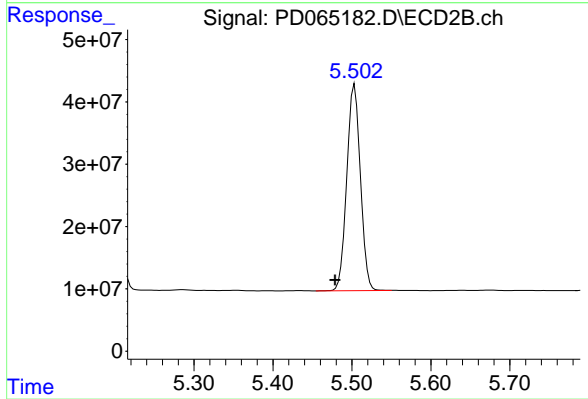
#23 Chlordane-1

R.T.: 0.000 min
 Exp R.T. : 5.009 min
 Response: 0
 Conc: N.D.



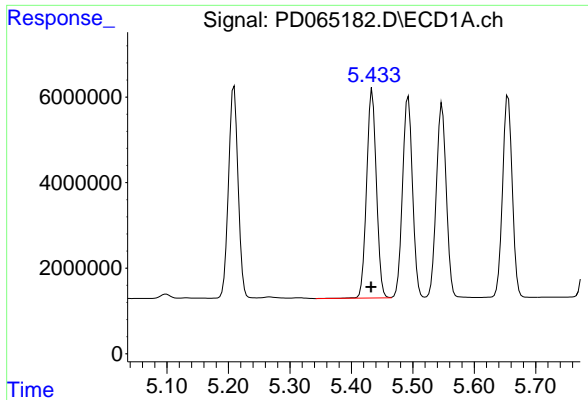
#24 Chlordane-2

R.T.: 0.000 min
 Exp R.T. : 4.866 min
 Response: 0
 Conc: N.D.



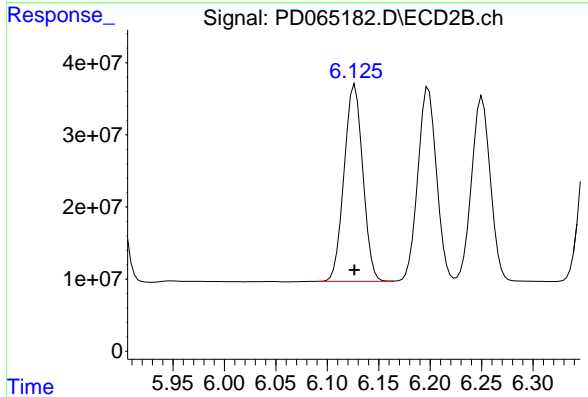
#24 Chlordane-2

R.T.: 5.503 min
 Delta R.T.: 0.024 min
 Response: 397688816
 Conc: 1271.28 ng/ml

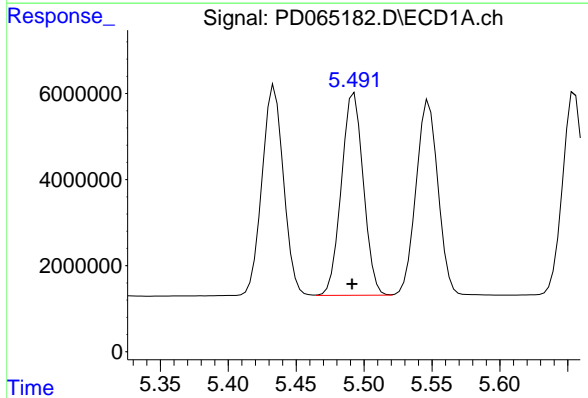


#25 Chlordane-3
 R.T.: 5.434 min
 Delta R.T.: 0.002 min
 Response: 53884648
 Conc: 488.21 ng/ml

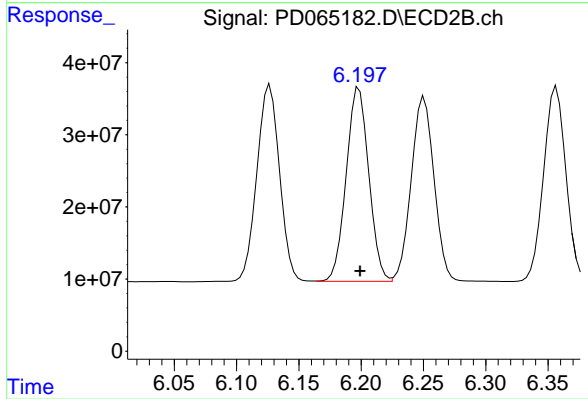
Instrument :
 ECD_D
 ClientSampled :
 PB138591BS



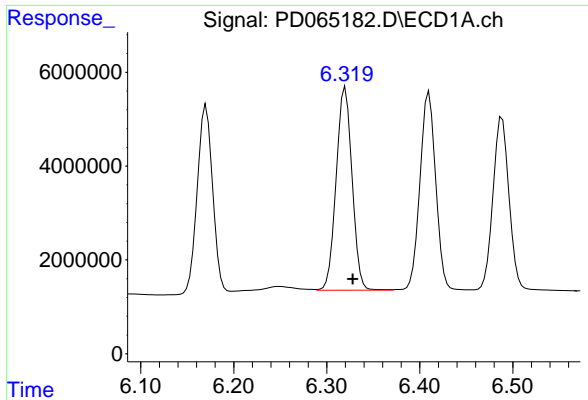
#25 Chlordane-3
 R.T.: 6.127 min
 Delta R.T.: 0.000 min
 Response: 345472684
 Conc: 334.16 ng/ml



#26 Chlordane-4
 R.T.: 5.493 min
 Delta R.T.: 0.002 min
 Response: 52997047
 Conc: 577.29 ng/ml

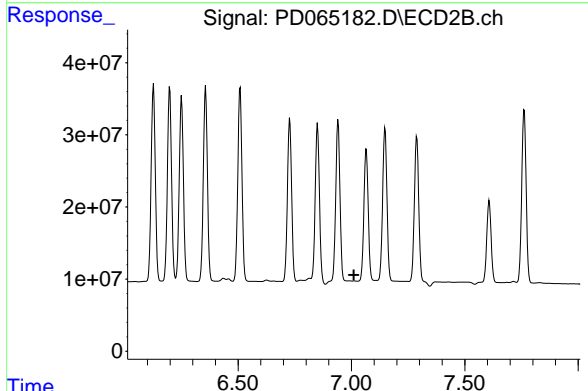


#26 Chlordane-4
 R.T.: 6.198 min
 Delta R.T.: 0.000 min
 Response: 340480339
 Conc: 283.19 ng/ml

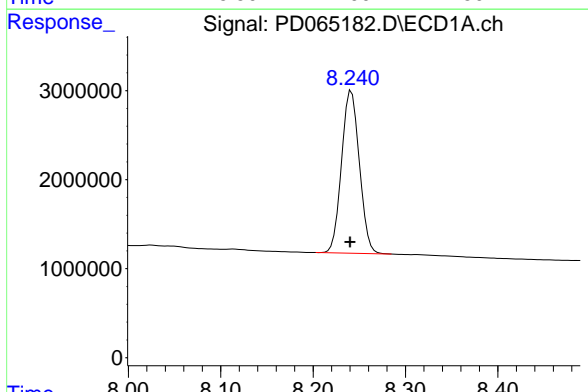


#27 Chlordane-5
 R.T.: 6.320 min
 Delta R.T.: -0.008 min
 Response: 51484440
 Conc: 1144.38 ng/ml

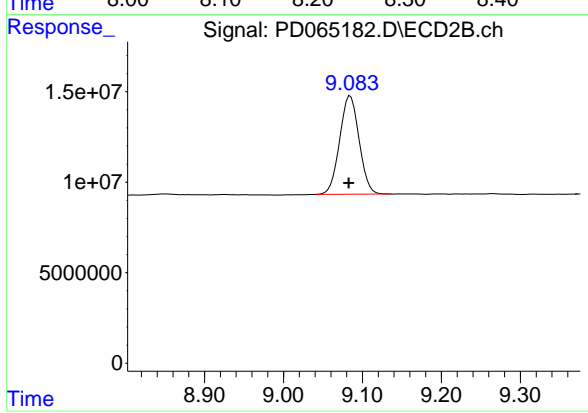
Instrument :
 ECD_D
ClientSampled :
 PB138591BS



#27 Chlordane-5
 R.T.: 0.000 min
 Exp R.T. : 7.010 min
 Response: 0
 Conc: N.D.



#28 Decachlorobiphenyl
 R.T.: 8.242 min
 Delta R.T.: 0.001 min
 Response: 24472125
 Conc: 21.60 ng/ml



#28 Decachlorobiphenyl
 R.T.: 9.085 min
 Delta R.T.: 0.002 min
 Response: 93126963
 Conc: 19.68 ng/ml