

Data Path : Z:\pestpcbsrv\HPCHEM1\ECD_D\Data\PD082622\
 Data File : PD071694.D
 Signal(s) : Signal #1: ECD1A.ch Signal #2: ECD2B.ch
 Acq On : 26 Aug 2022 23:43
 Operator : AR\AJ
 Sample : INDA310
 Misc :
 ALS Vial : 13 Sample Multiplier: 1

Instrument :
 ECD_D
 ClientSampleId :
 INDA3147

Integration File signal 1: autoint1.e
 Integration File signal 2: autoint2.e
 Quant Time: Aug 27 07:27:10 2022
 Quant Method : Z:\pestpcbsrv\HPCHEM1\ECD_D\Method\PD082622CLP.M
 Quant Title : GC Extractables
 QLast Update : Sat Aug 27 07:11:22 2022
 Response via : Initial Calibration
 Integrator: ChemStation

Volume Inj. : 1 µl
 Signal #1 Phase : ZB-MR2 Signal #2 Phase: ZB-MR1
 Signal #1 Info : 30M x 0.32mm x0.2 Signal #2 Info : 30M x 0.32mm x 0.50µm

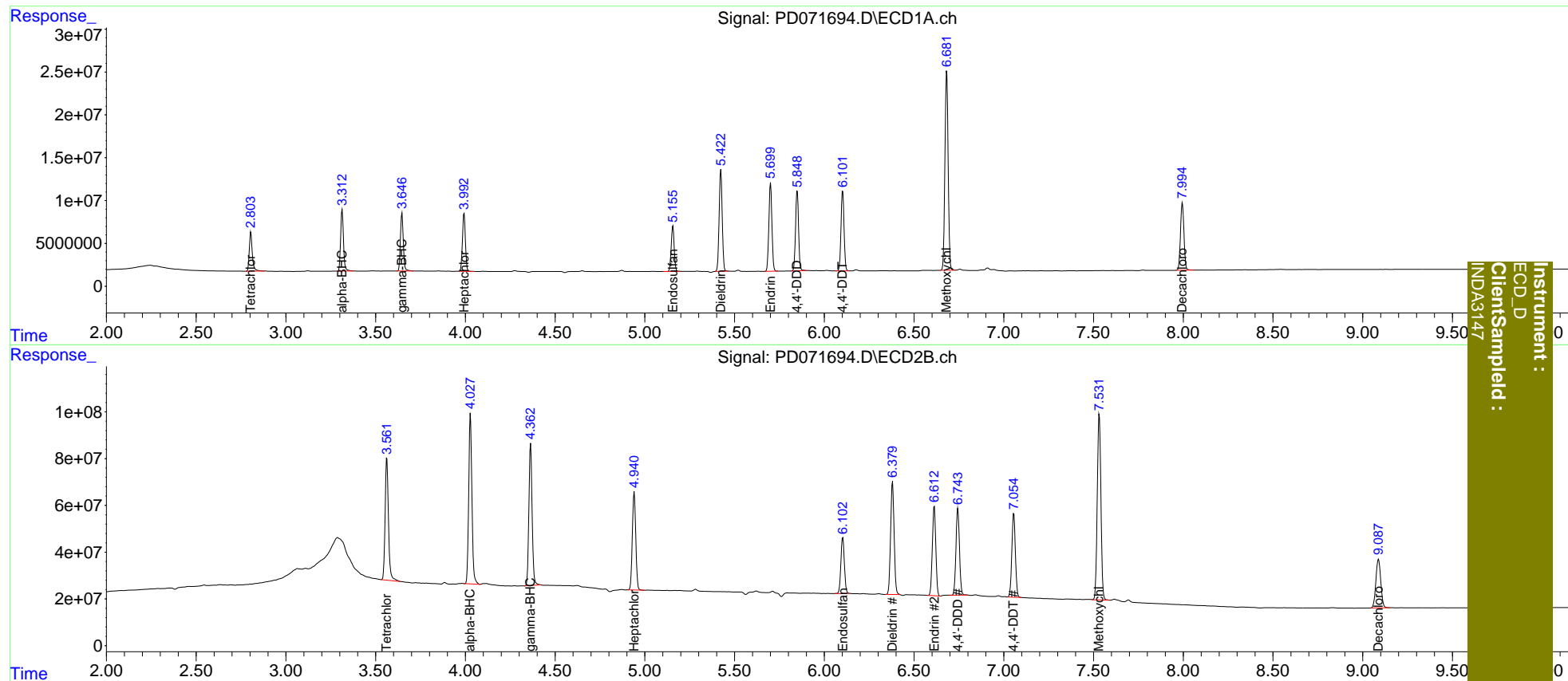
| | Compound | RT#1 | RT#2 | Resp#1 | Resp#2 | ng/ml | ng/ml |
|-----------------------------|-----------------|-------|-------|----------|----------|---------|---------|
| ----- | | | | | | | |
| System Monitoring Compounds | | | | | | | |
| 1) | SA Tetrachlo... | 2.805 | 3.563 | 52999103 | 681.4E6 | 20.322 | 20.796 |
| 27) | SA Decachlor... | 7.995 | 9.088 | 106.3E6 | 392.5E6 | 40.499 | 41.055 |
| Target Compounds | | | | | | | |
| 2) | A alpha-BHC | 3.313 | 4.028 | 78325382 | 907.3E6 | 20.307 | 20.563 |
| 3) | MA gamma-BHC... | 3.647 | 4.364 | 74646118 | 759.3E6 | 20.219 | 20.416 |
| 4) | MA Heptachlor | 3.993 | 4.941 | 77099593 | 552.7E6 | 20.257 | 20.470 |
| 9) | A Endosulfan I | 5.156 | 6.103 | 61318404 | 321.0E6 | 19.456 | 20.436 |
| 13) | MA Dieldrin | 5.424 | 6.380 | 141.0E6 | 656.1E6 | 40.721 | 40.993 |
| 14) | MA Endrin | 5.701 | 6.613 | 121.9E6 | 513.0E6 | 40.689 | 38.987 |
| 16) | A 4,4'-DDD | 5.849 | 6.744 | 108.6E6 | 503.3E6 | 41.247 | 41.132 |
| 17) | MA 4,4'-DDT | 6.103 | 7.056 | 109.7E6 | 490.4E6 | 40.314 | 40.646 |
| 20) | A Methoxychlor | 6.682 | 7.532 | 290.4E6 | 1119.4E6 | 202.173 | 204.018 |
| ----- | | | | | | | |

(f)=RT Delta > 1/2 Window (#)=Amounts differ by > 25% (m)=manual int.

Data Path : Z:\pestpcbsrv\HPCHEM1\ECD_D\Data\PD082622\
 Data File : PD071694.D
 Signal(s) : Signal #1: ECD1A.ch Signal #2: ECD2B.ch
 Acq On : 26 Aug 2022 23:43
 Operator : AR\AJ
 Sample : INDA310
 Misc :
 ALS Vial : 13 Sample Multiplier: 1

Integration File signal 1: autoint1.e
 Integration File signal 2: autoint2.e
 Quant Time: Aug 27 07:27:10 2022
 Quant Method : Z:\pestpcbsrv\HPCHEM1\ECD_D\Method\PD082622CLP.M
 Quant Title : GC Extractables
 QLast Update : Sat Aug 27 07:11:22 2022
 Response via : Initial Calibration
 Integrator: ChemStation

Volume Inj. : 1 µl
 Signal #1 Phase : ZB-MR2 Signal #2 Phase: ZB-MR1
 Signal #1 Info : 30M x 0.32mm x0.2 Signal #2 Info : 30M x 0.32mm x 0.50µm



Instrument :
 ECD_D
 ClientSampleID :
 INDA3147