

Data Path : Z:\pestpcbsrv\HPCHEM1\ECD_D\Data\PD082724\
 Data File : PD084730.D
 Signal(s) : Signal #1: ECD1A.ch Signal #2: ECD2B.ch
 Acq On : 24 Aug 2024 00:50
 Operator : AR\AJ
 Sample : P3673-22MSD
 Misc :
 ALS Vial : 48 Sample Multiplier: 1

Instrument :
 ECD_D
 ClientSampleId :
 DCXZ4MSD

Integration File signal 1: autoint1.e
 Integration File signal 2: autoint2.e
 Quant Time: Aug 27 05:45:07 2024
 Quant Method : Z:\pestpcbsrv\HPCHEM1\ECD_D\Method\PD082524CLP.M
 Quant Title : GC Extractables
 QLast Update : Tue Aug 27 02:47:48 2024
 Response via : Initial Calibration
 Integrator: ChemStation

Volume Inj. : 1 µl
 Signal #1 Phase : ZB-MR2 Signal #2 Phase: ZB-MR2
 Signal #1 Info : 30M x 0.32mm x0.5 Signal #2 Info : 30M x 0.32mm x 0.25µm

	Compound	RT#1	RT#2	Resp#1	Resp#2	ng/ml	ng/ml

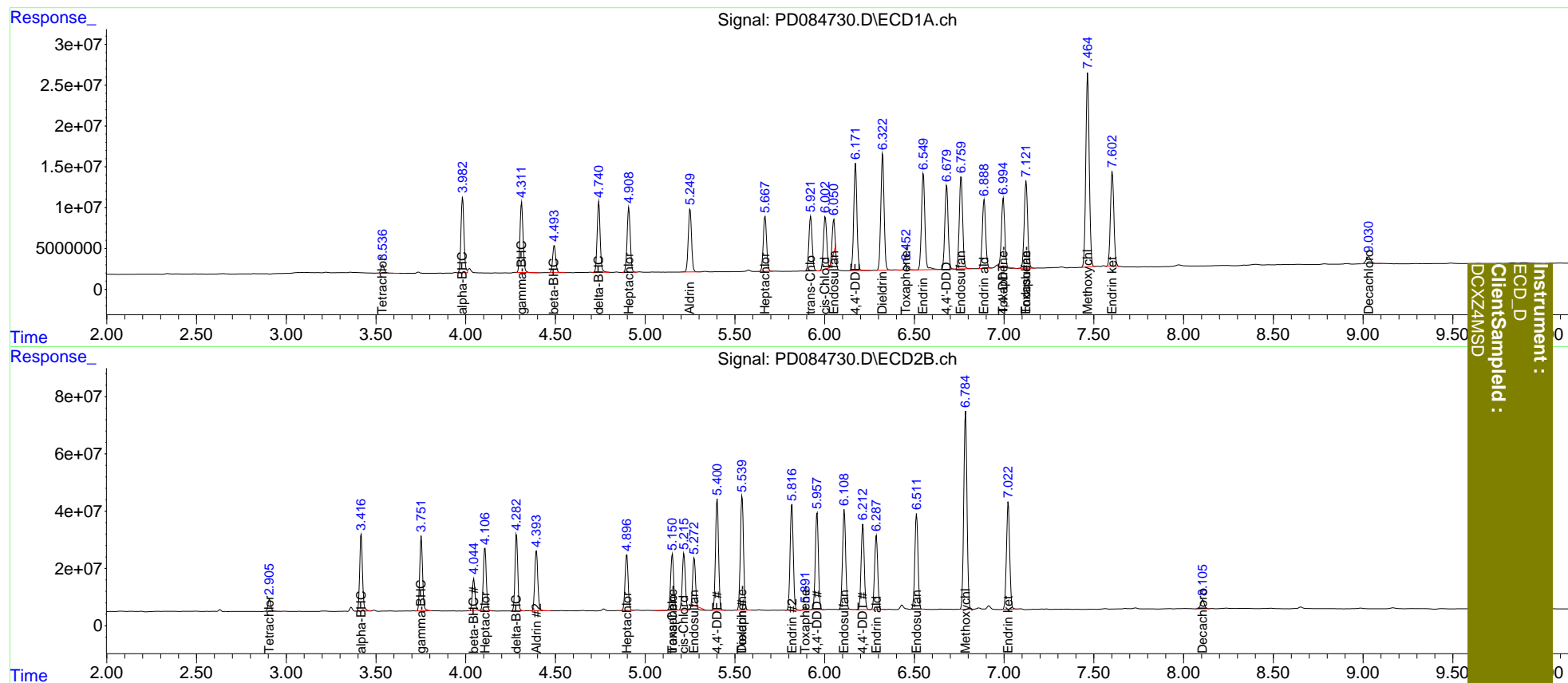
System Monitoring Compounds							
1)	SA Tetrachlo...	3.537	2.907	13099878	47783443	12.952	13.503
27)	SA Decachlor...	9.031	8.107	15741043	44045224	12.053	12.667
Target Compounds							
2)	A alpha-BHC	3.983	3.418	105.5E6	293.1E6	62.025	57.798
3)	MA gamma-BHC...	4.312	3.753	101.3E6	280.3E6	62.640	57.837
4)	MA Heptachlor	4.909	4.108	97758445	248.1E6	63.537	58.283
5)	MB Aldrin	5.250	4.394	96933229	248.6E6	60.608	55.977
6)	B beta-BHC	4.494	4.045	40002510	116.8E6	55.072	53.876
7)	B delta-BHC	4.742	4.284	100.8E6	284.4E6	61.442	57.289
8)	Heptachlo...	5.668	4.898	85712574	231.1E6	57.469	54.574
9)	A Endosulfan I	6.051	5.274	39203001	158.5E6	28.495	41.359 #
10)	B trans-Chl...	5.922	5.152	84624531	230.4E6	60.001	56.023
11)	B cis-Chlor...	6.004	5.216	80127286	232.4E6	54.193	55.388
12)	B 4,4'-DDE	6.172	5.402	162.2E6	456.3E6	130.039	116.335
13)	MA Dieldrin	6.324	5.540	180.3E6	484.6E6	122.241	112.808
14)	MA Endrin	6.550	5.818	156.1E6	451.2E6	138.335	121.862
15)	B Endosulfa...	6.761	6.110	147.8E6	423.6E6	112.004	114.258
16)	A 4,4'-DDD	6.680	5.958	132.0E6	402.2E6	133.729	118.506
17)	MA 4,4'-DDT	6.996	6.213	103.1E6	359.8E6	115.220	112.477
18)	B Endrin al...	6.889	6.288	109.4E6	315.5E6	121.099	110.501
19)	B Endosulfa...	7.123	6.513	141.0E6	407.5E6	122.373	114.087
20)	A Methoxychlor	7.466	6.785	317.3E6	870.7E6	609.072	526.316
21)	B Endrin ke...	7.603	7.023	153.8E6	469.9E6	125.820	106.725
22)	Toxaphene-1	0.000	5.152	0	230.4E6	N.D.	9088.710
23)	Toxaphene-2	6.454f	5.540f	8282459	484.6E6	563.112	19607.665 #
24)	Toxaphene-3	6.996f	5.893	103.1E6	12212754	3010.263	517.569 #
25)	Toxaphene-4	7.123	0.000	141.0E6	0	5478.724	N.D. #

(f)=RT Delta > 1/2 Window (#)=Amounts differ by > 25% (m)=manual int.

Data Path : Z:\pestpcbsrv\HPCHEM1\ECD_D\Data\PD082724\
 Data File : PD084730.D
 Signal(s) : Signal #1: ECD1A.ch Signal #2: ECD2B.ch
 Acq On : 24 Aug 2024 00:50
 Operator : AR\AJ
 Sample : P3673-22MSD
 Misc :
 ALS Vial : 48 Sample Multiplier: 1

Integration File signal 1: autoint1.e
 Integration File signal 2: autoint2.e
 Quant Time: Aug 27 05:45:07 2024
 Quant Method : Z:\pestpcbsrv\HPCHEM1\ECD_D\Method\PD082524CLP.M
 Quant Title : GC Extractables
 QLast Update : Tue Aug 27 02:47:48 2024
 Response via : Initial Calibration
 Integrator: ChemStation

Volume Inj. : 1 µl
 Signal #1 Phase : ZB-MR1 Signal #2 Phase: ZB-MR2
 Signal #1 Info : 30M x 0.32mm x0.5 Signal #2 Info : 30M x 0.32mm x 0.25µm



The printer must be in Portrait mode.

Instrument :
ECD_D
ClientSampled :
DCXZ4MSD